



US005341036A

# United States Patent [19]

[11] Patent Number: **5,341,036**

Wheeler et al.

[45] Date of Patent: **Aug. 23, 1994**

## [54] TWO HAND OPERATED MACHINE CONTROL STATION USING CAPACITIVE PROXIMITY SWITCHES

[75] Inventors: **Keith D. Wheeler; Stanley H. Edwards, Jr.**, both of Raleigh, N.C.

[73] Assignee: **Square D Company**, Palatine, Ill.

[21] Appl. No.: **805,422**

[22] Filed: **Dec. 11, 1991**

[51] Int. Cl.<sup>5</sup> ..... **H01H 9/26**

[52] U.S. Cl. .... **307/328; 361/179; 361/189; 340/573; 192/131 R; 192/129 A**

[58] Field of Search ..... **307/116-118, 307/308, 326, 328, 140, 141.4; 361/179-181, 189, 280; 200/600, 61.85; 340/551, 552, 561, 568, 573; 328/5, 7, 1; 192/129 R-132 R**

### [56] References Cited

#### U.S. PATENT DOCUMENTS

3,089,985	5/1963	Camfield et al.	361/189
3,560,800	2/1971	Weidenfeld	361/189
3,764,819	10/1973	Muller	307/116
3,895,269	7/1975	Geremia	361/189
4,031,408	6/1977	Holz	307/116
4,074,602	2/1978	Brower	361/189 X
4,412,268	10/1983	Dassow	361/181
4,767,940	8/1988	Tuttle	307/116
5,168,173	12/1992	Windsor	307/139
5,212,621	5/1993	Panter	361/181

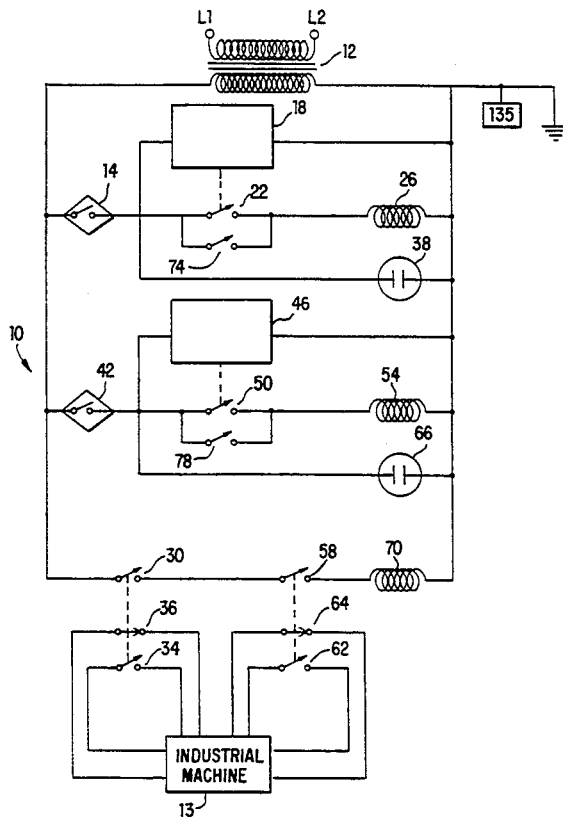
Assistant Examiner—Fritz M. Fleming  
Attorney, Agent, or Firm—Larry I. Golden; D. Russell Stacey; Larry T. ShROUT

### [57] ABSTRACT

A machine operator control station circuit which uses capacitive proximity switches to replicate the function of mechanical switches used in prior art control stations. A monitoring circuit for monitoring the "on" state of the capacitive proximity switches used in a two hand industrial machine control station is disclosed. The circuit also reduces the chance of unintended operation of the machine being controlled as a result of emitted or conducted radio frequency interference which might be detected by the capacitive proximity switches. An isolation transformer provides an isolated power supply for the monitoring circuit. The monitoring circuit includes a first capacitive proximity switch for detecting the presence of one of the machine operator's hands, and a second capacitive proximity switch for detecting the presence of the other of the machine operator's hands. Each proximity switch has a monitoring circuit for monitoring the length of time the proximity switch remains in the activated or "on" state. The monitoring circuits of the first and second proximity switches are connected together such that both switches must be activated within a set time window in order to activate the machine control circuit.

Primary Examiner—A. D. Pellinen

10 Claims, 6 Drawing Sheets



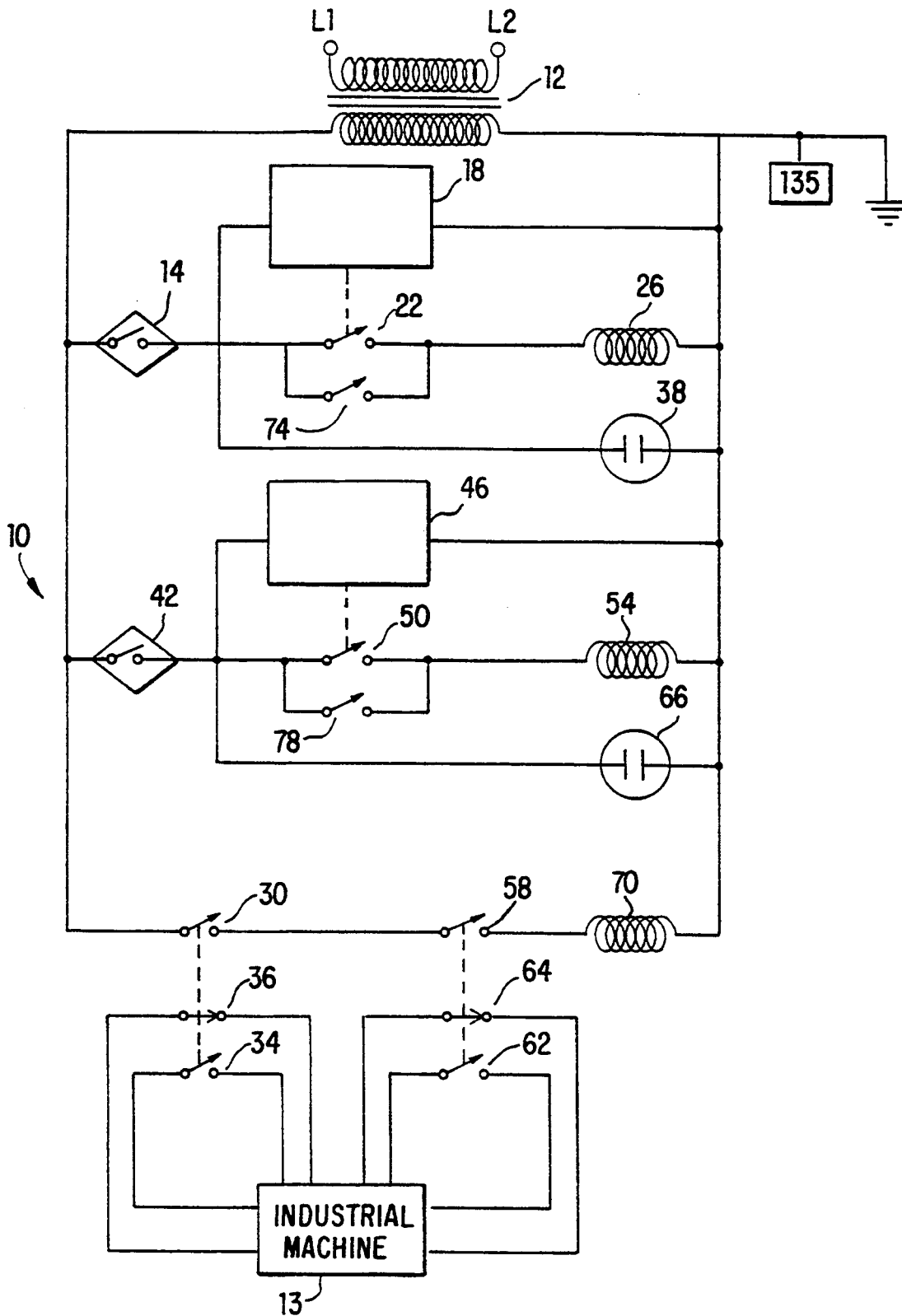


FIG. 1

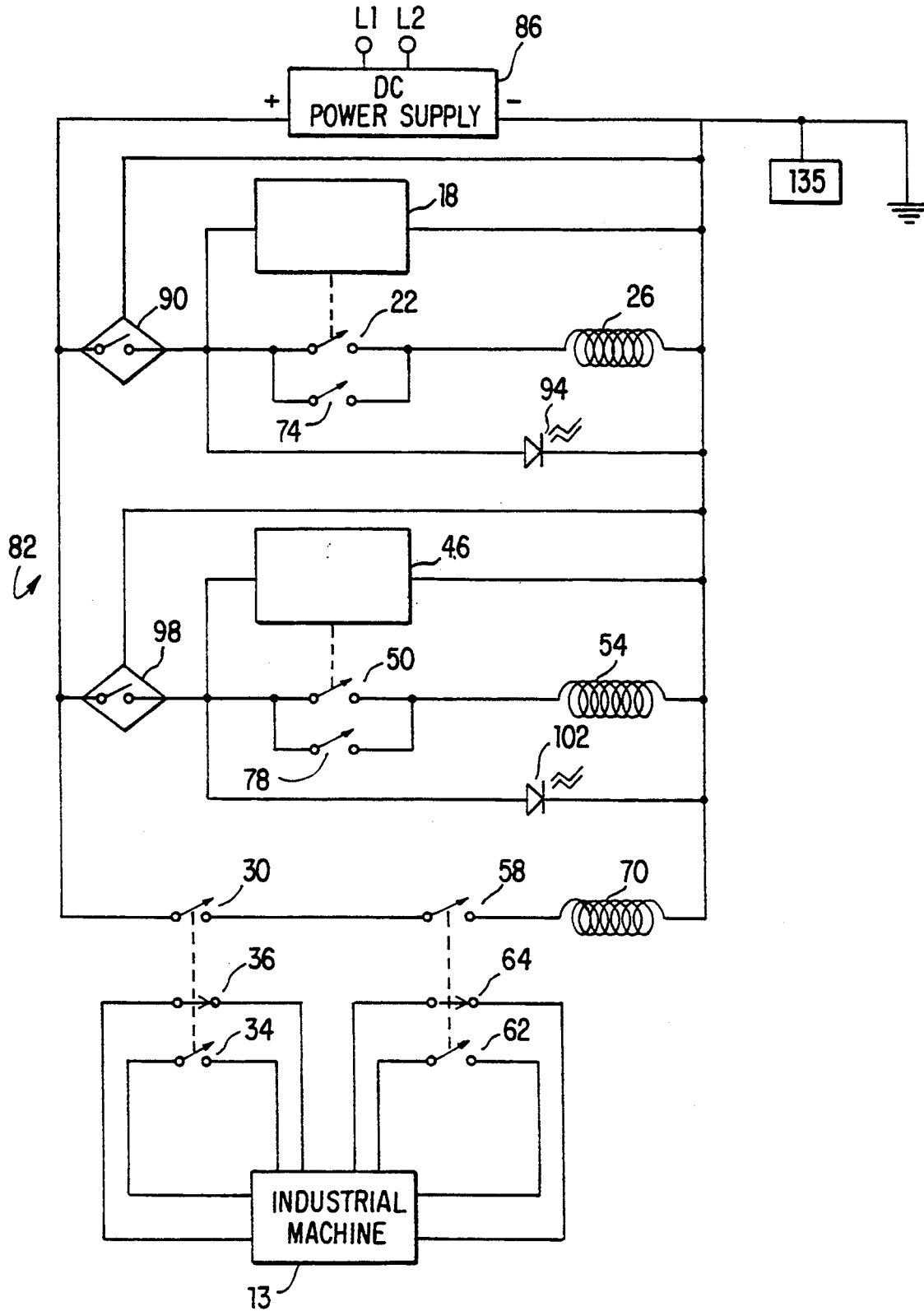


FIG. 2

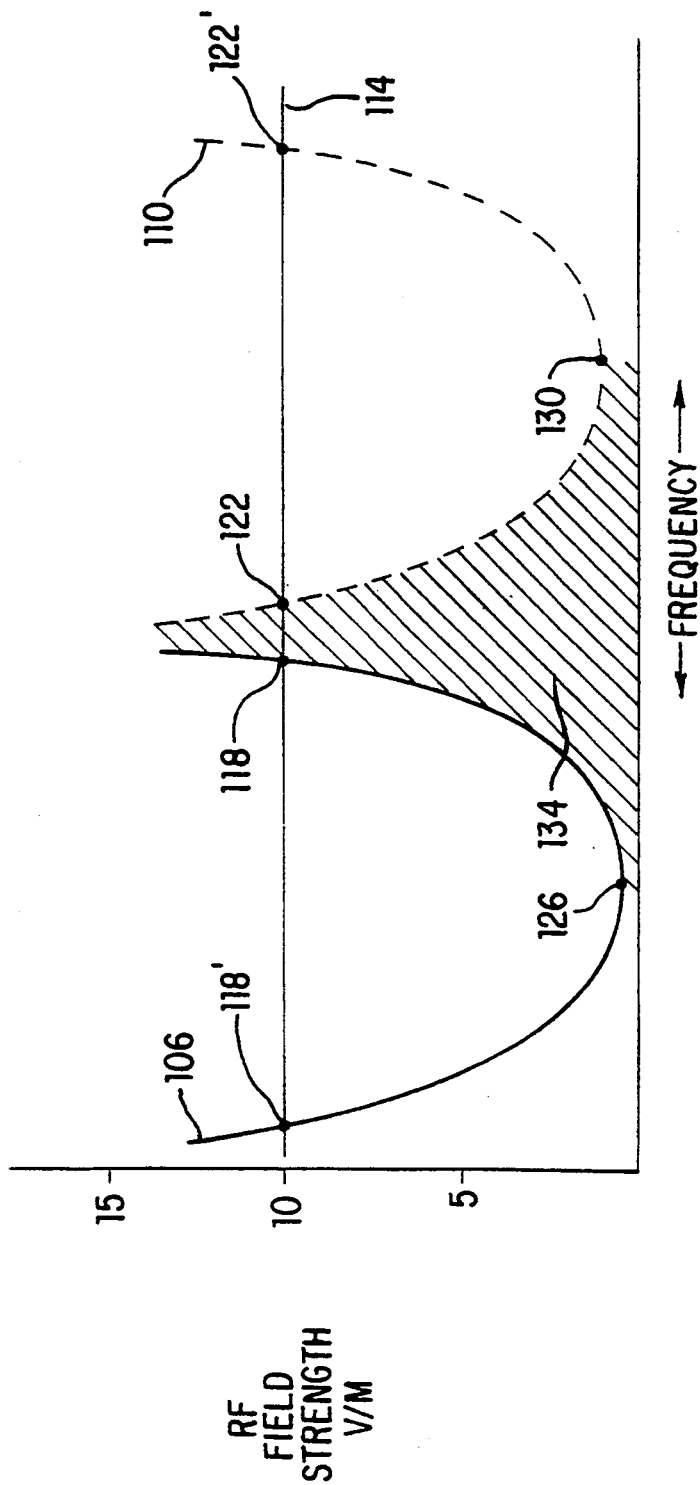


FIG. 3

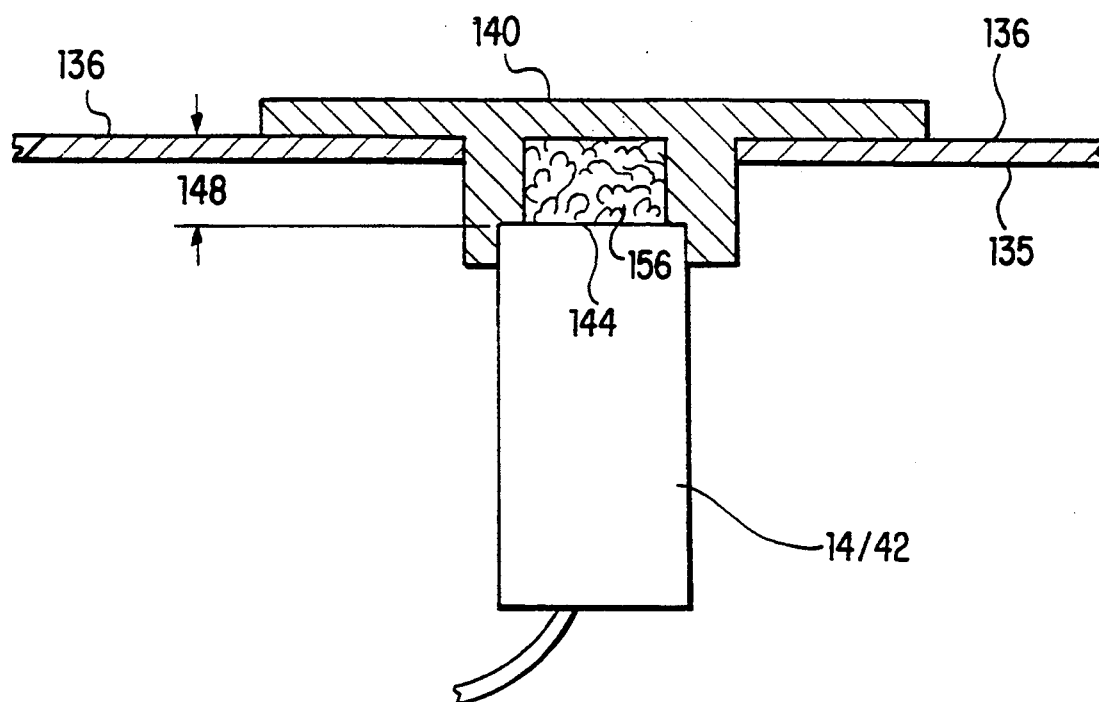


FIG. 4

# Explore Litigation Insights

Docket Alarm provides insights to develop a more informed litigation strategy and the peace of mind of knowing you're on top of things.

## Real-Time Litigation Alerts



Keep your litigation team up-to-date with **real-time alerts** and advanced team management tools built for the enterprise, all while greatly reducing PACER spend.

Our comprehensive service means we can handle Federal, State, and Administrative courts across the country.

## Advanced Docket Research



With over 230 million records, Docket Alarm's cloud-native docket research platform finds what other services can't. Coverage includes Federal, State, plus PTAB, TTAB, ITC and NLRB decisions, all in one place.

Identify arguments that have been successful in the past with full text, pinpoint searching. Link to case law cited within any court document via Fastcase.

## Analytics At Your Fingertips



Learn what happened the last time a particular judge, opposing counsel or company faced cases similar to yours.

Advanced out-of-the-box PTAB and TTAB analytics are always at your fingertips.

## API

Docket Alarm offers a powerful API (application programming interface) to developers that want to integrate case filings into their apps.

## LAW FIRMS

Build custom dashboards for your attorneys and clients with live data direct from the court.

Automate many repetitive legal tasks like conflict checks, document management, and marketing.

## FINANCIAL INSTITUTIONS

Litigation and bankruptcy checks for companies and debtors.

## E-DISCOVERY AND LEGAL VENDORS

Sync your system to PACER to automate legal marketing.