

(12) **United States Patent**
Brill et al.

(10) **Patent No.:** **US 6,628,835 B1**
(45) **Date of Patent:** **Sep. 30, 2003**

(54) **METHOD AND SYSTEM FOR DEFINING AND RECOGNIZING COMPLEX EVENTS IN A VIDEO SEQUENCE**

5,828,809 A * 10/1998 Chang et al. 386/69
5,969,755 A * 10/1999 Courtney 348/143
6,107,918 A * 8/2000 Klein et al. 340/511
6,295,367 B1 * 9/2001 Crabtree et al. 382/103

(75) Inventors: **Frank Z. Brill**, Plano, TX (US);
Thomas J. Olson, Plano, TX (US)

* cited by examiner

(73) Assignee: **Texas Instruments Incorporated**,
Dallas, TX (US)

Primary Examiner—Mehrdad Dastouri

(74) *Attorney, Agent, or Firm*—Robert D. Marshall, Jr.; W. James Brady, III; Frederick J. Telecky, Jr.

(*) Notice: Subject to any disclaimer, the term of this patent is extended or adjusted under 35 U.S.C. 154(b) by 0 days.

(57) **ABSTRACT**

Given a system which detects simple events, one can define a complex event by constructing a list of sub-events. In order to recognize a complex event, the system keeps a record of the sub-events that have occurred thus far and the objects involved in these sub-events. Whenever the first sub-event in a complex event's sequence is recognized, an activation for that complex event is created. The activation contains an indication of the identity of the object involved in the event. The activation also includes an index initialized to one. If a newly detected event matches the next sub-event in any of the currently open complex events, the index for that complex event is incremented. If the index reaches the total number of sub-events in that complex event, the complete complex event is recognized. Thus any desired alarm is generated. Since the complex event that was just recognized may also be a sub-event of another complex event, the activation lists are consulted again to see if the indices of any other complex event activations can be advanced.

(21) Appl. No.: **09/379,986**

(22) Filed: **Aug. 24, 1999**

Related U.S. Application Data

(60) Provisional application No. 60/098,475, filed on Aug. 31, 1998.

(51) **Int. Cl.**⁷ **G06K 9/68**; G06K 9/00; H04N 7/18

(52) **U.S. Cl.** **382/226**; 382/103; 348/155

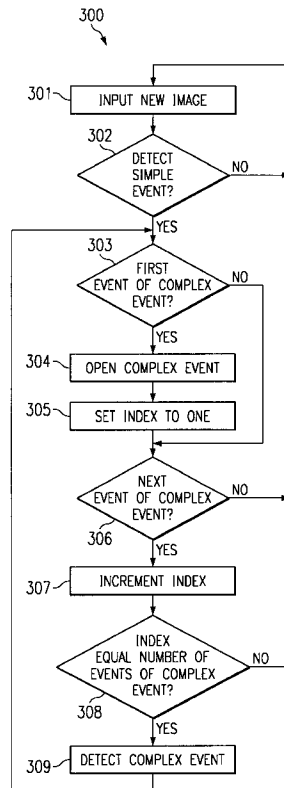
(58) **Field of Search** 382/218, 219, 382/224, 225, 226, 103; 348/142, 143, 152, 153, 154, 155; 386/69; 340/511

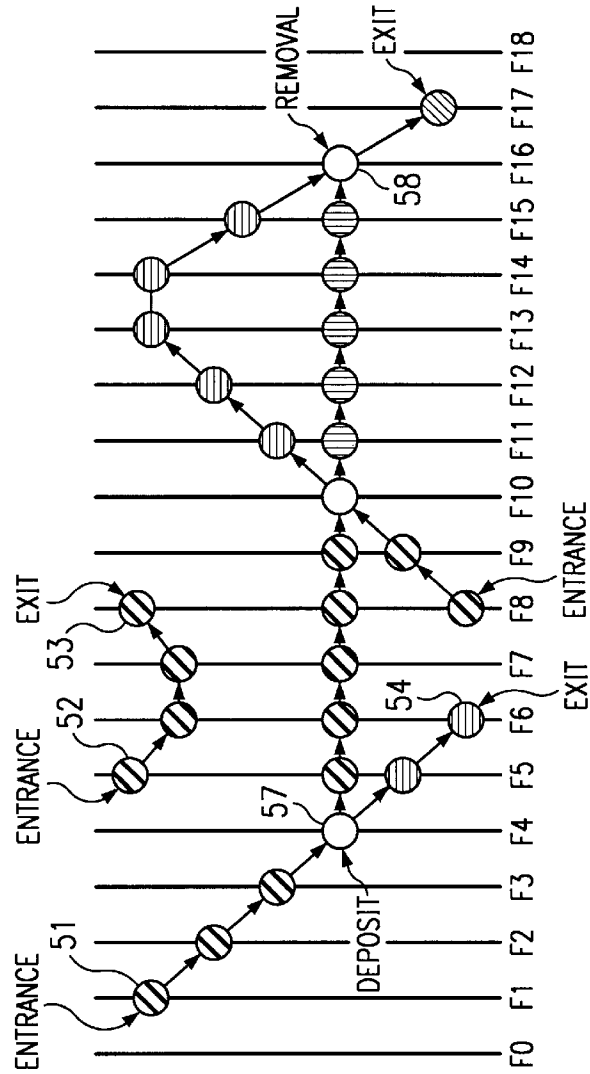
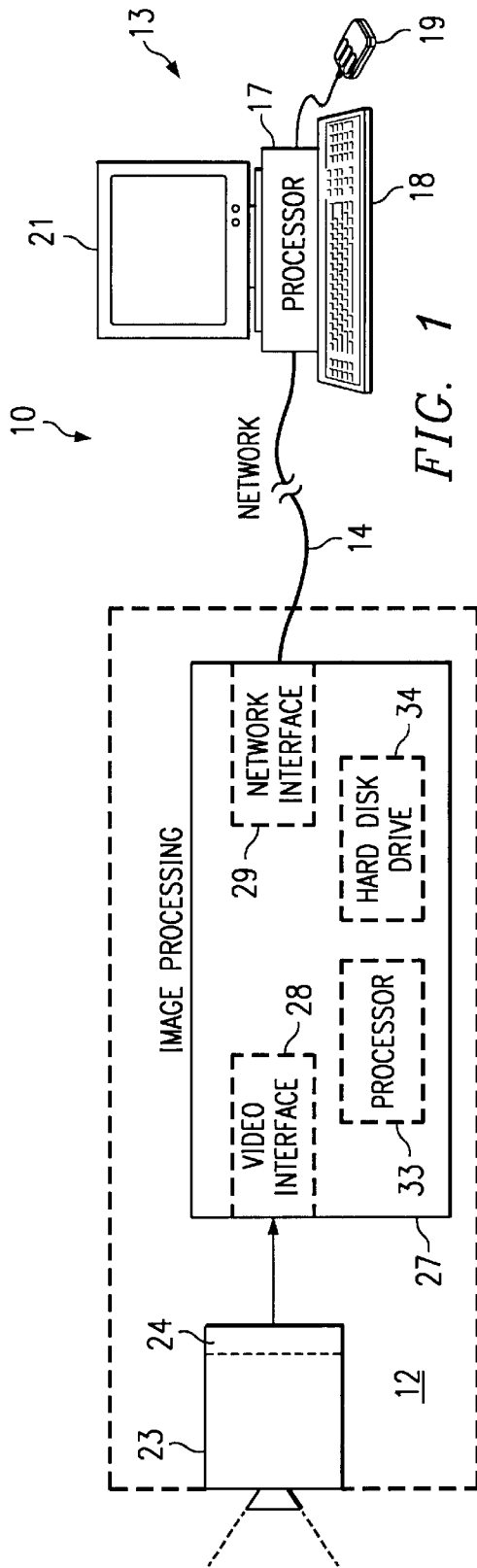
(56) **References Cited**

U.S. PATENT DOCUMENTS

5,666,157 A * 9/1997 Aviv 348/152

6 Claims, 4 Drawing Sheets





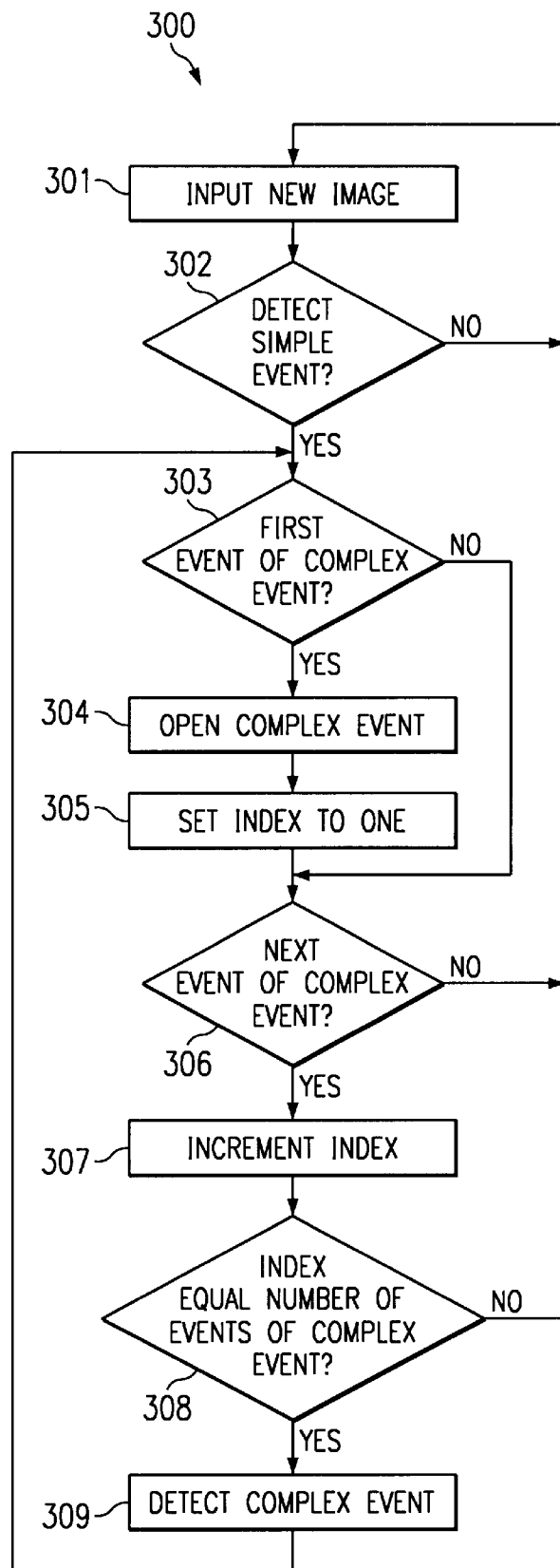


FIG. 3

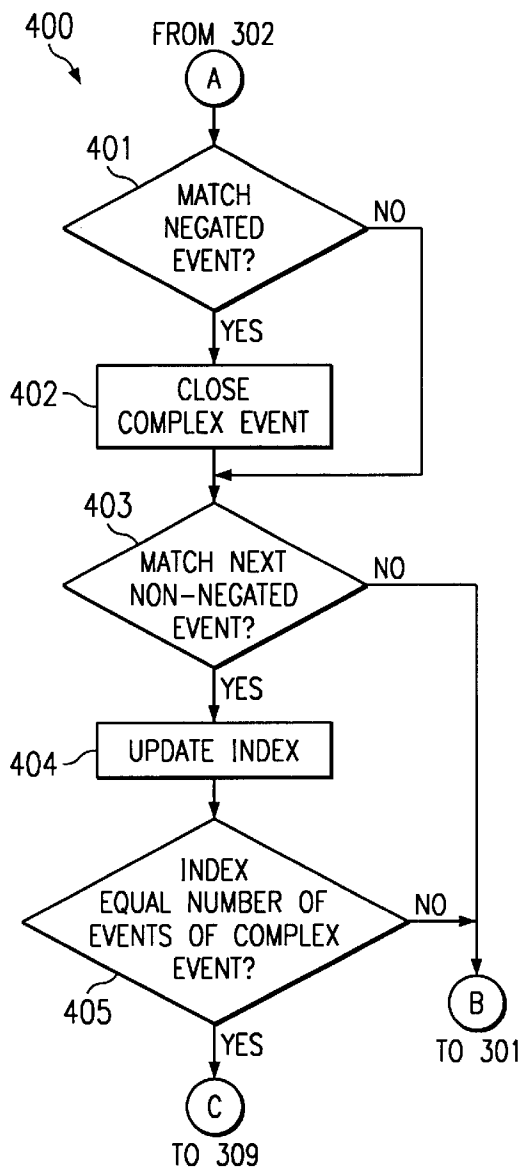


FIG. 4

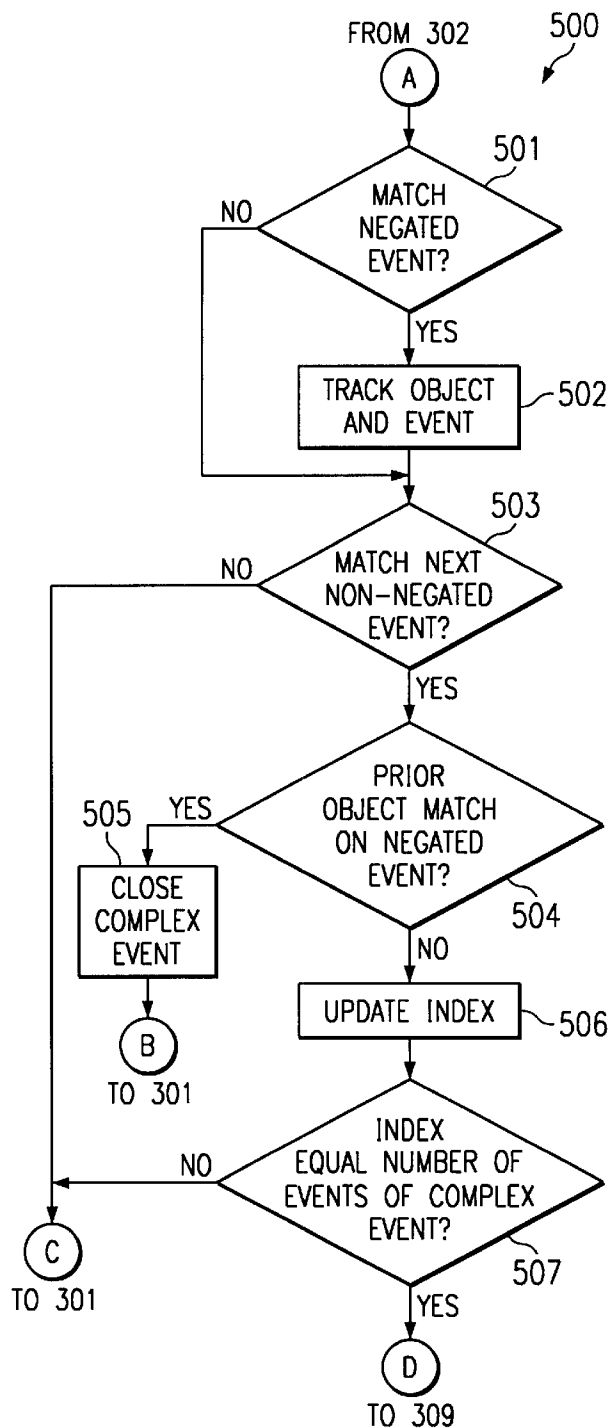


FIG. 5

Name :

Events: enter exit loiter alone leave deposit remove
 move rest incar outcar lightsout lightson

Objects: person box briefcase notebook car object unknown

Days of week: Monday Tuesday Wednesday Thursday
 Friday Saturday Sunday

Time of day: from 12:00 am until 12:00 am

Regions: PC_area outside_the_door phone_area

Duration:

Actions: beep log flash plot voice popup

FIG. 6

Name :

Actions: beep log flash plot voice popup

FIG. 7

Explore Litigation Insights

Docket Alarm provides insights to develop a more informed litigation strategy and the peace of mind of knowing you're on top of things.

Real-Time Litigation Alerts



Keep your litigation team up-to-date with **real-time alerts** and advanced team management tools built for the enterprise, all while greatly reducing PACER spend.

Our comprehensive service means we can handle Federal, State, and Administrative courts across the country.

Advanced Docket Research



With over 230 million records, Docket Alarm's cloud-native docket research platform finds what other services can't. Coverage includes Federal, State, plus PTAB, TTAB, ITC and NLRB decisions, all in one place.

Identify arguments that have been successful in the past with full text, pinpoint searching. Link to case law cited within any court document via Fastcase.

Analytics At Your Fingertips



Learn what happened the last time a particular judge, opposing counsel or company faced cases similar to yours.

Advanced out-of-the-box PTAB and TTAB analytics are always at your fingertips.

API

Docket Alarm offers a powerful API (application programming interface) to developers that want to integrate case filings into their apps.

LAW FIRMS

Build custom dashboards for your attorneys and clients with live data direct from the court.

Automate many repetitive legal tasks like conflict checks, document management, and marketing.

FINANCIAL INSTITUTIONS

Litigation and bankruptcy checks for companies and debtors.

E-DISCOVERY AND LEGAL VENDORS

Sync your system to PACER to automate legal marketing.