



US006799318B1

(12) **United States Patent**  
Davison et al.

(10) **Patent No.:** US 6,799,318 B1  
(45) **Date of Patent:** Sep. 28, 2004

(54) **METHOD HAVING MULTIPLE INTERFACES WITH DISTINGUISHED FUNCTIONS AND COMMANDS FOR PROVIDING SERVICES TO A DEVICE THROUGH A TRANSPORT**

6,591,295 B1 \* 7/2003 Diamond et al. .... 709/217

**OTHER PUBLICATIONS**

Artisoft, "Using NodeRunner/SI with NDIS," 1993, 8 pages.  
Moore, "Windows, Wireless Architecture", 71 pages.  
Ray et al., "Bluetooth Stack in Windows", 30 pages.  
*Specification of the Bluetooth System*, v1.0B, Dec. 1, 1999.  
Riku Mettala et al., *Bluetooth Protocol Architecture* (White Paper), v1.0, Nokia Mobile Phones, Sep. 29, 1999.  
Brent Miller et al., *Mapping Salutation Architecture APIs to Bluetooth Service Discovery Layer* (White Paper), v1.0, IBM Corporation, Jul. 1, 1999.  
IEEE Standard, 802.11, *Part 11: Wireless LAN Medium Access Control (MAC) and Physical Layer (PHY) Specifications*, 1<sup>st</sup> Ed. 1999, and Supplements 802.11a-1999 and 802.11b-1999.  
Bob O'Hara and Al Petrick, *IEEE 802.11 Handbook A Designer's Companion*, Dec. 1999.  
Pat Megowan et al., *IrDA Object Exchange Protocol*, v1.2, Counterpoint Systems Foundry, Inc. Microsoft Corporation, Mar. 18, 1999.

(75) Inventors: **Eric Davison**, Seattle, WA (US);  
**Stanley W. Adermann**, Sammamish, WA (US)

(73) Assignee: **Microsoft Corporation**, Redmond, WA (US)

(\* ) Notice: Subject to any disclaimer, the term of this patent is extended or adjusted under 35 U.S.C. 154(b) by 669 days.

(21) Appl. No.: **09/587,753**

(22) Filed: **Jun. 5, 2000**

**Related U.S. Application Data**

(63) Continuation-in-part of application No. 09/552,320, filed on Apr. 24, 2000, now abandoned.

(51) **Int. Cl.**<sup>7</sup> ..... **G06F 3/00**

(52) **U.S. Cl.** ..... **719/328**

(58) **Field of Search** ..... 709/228, 230,  
709/250, 302; 719/328; 717/108

(56) **References Cited**

**U.S. PATENT DOCUMENTS**

|              |   |         |                      |           |
|--------------|---|---------|----------------------|-----------|
| 5,136,716 A  | * | 8/1992  | Harvey et al. ....   | 709/228   |
| 5,386,568 A  | * | 1/1995  | Wold et al. ....     | 717/162   |
| 5,425,028 A  | * | 6/1995  | Britton et al. ....  | 370/389   |
| 5,548,723 A  | * | 8/1996  | Pettus ....          | 709/228   |
| 5,572,724 A  | * | 11/1996 | Watanabe et al. .... | 707/200   |
| 5,612,898 A  |   | 3/1997  | Huckins              |           |
| 5,706,437 A  | * | 1/1998  | Kirchner et al. .... | 709/203   |
| 5,710,908 A  | * | 1/1998  | Man ....             | 709/230   |
| 5,758,186 A  |   | 5/1998  | Hamilton et al.      |           |
| 5,987,517 A  | * | 11/1999 | Firth et al. ....    | 709/230   |
| 6,023,698 A  | * | 2/2000  | Lavey et al. ....    | 707/10    |
| 6,032,198 A  | * | 2/2000  | Fujii et al. ....    | 719/328   |
| 6,247,020 B1 | * | 6/2001  | Minard ....          | 707/104.1 |
| 6,351,776 B1 | * | 2/2002  | O'Brien et al. ....  | 709/245   |
| 6,408,342 B1 | * | 6/2002  | Moore et al. ....    | 709/330   |
| 6,434,617 B1 | * | 8/2002  | Clough et al. ....   | 709/227   |

\* cited by examiner

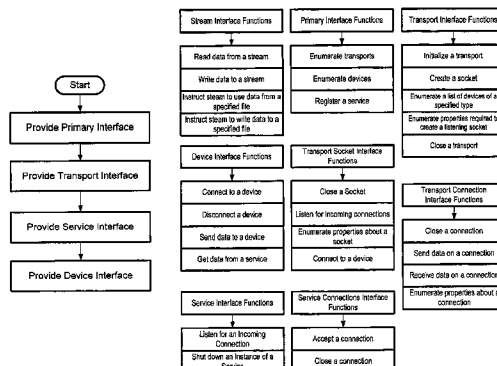
*Primary Examiner*—Krisa Lim

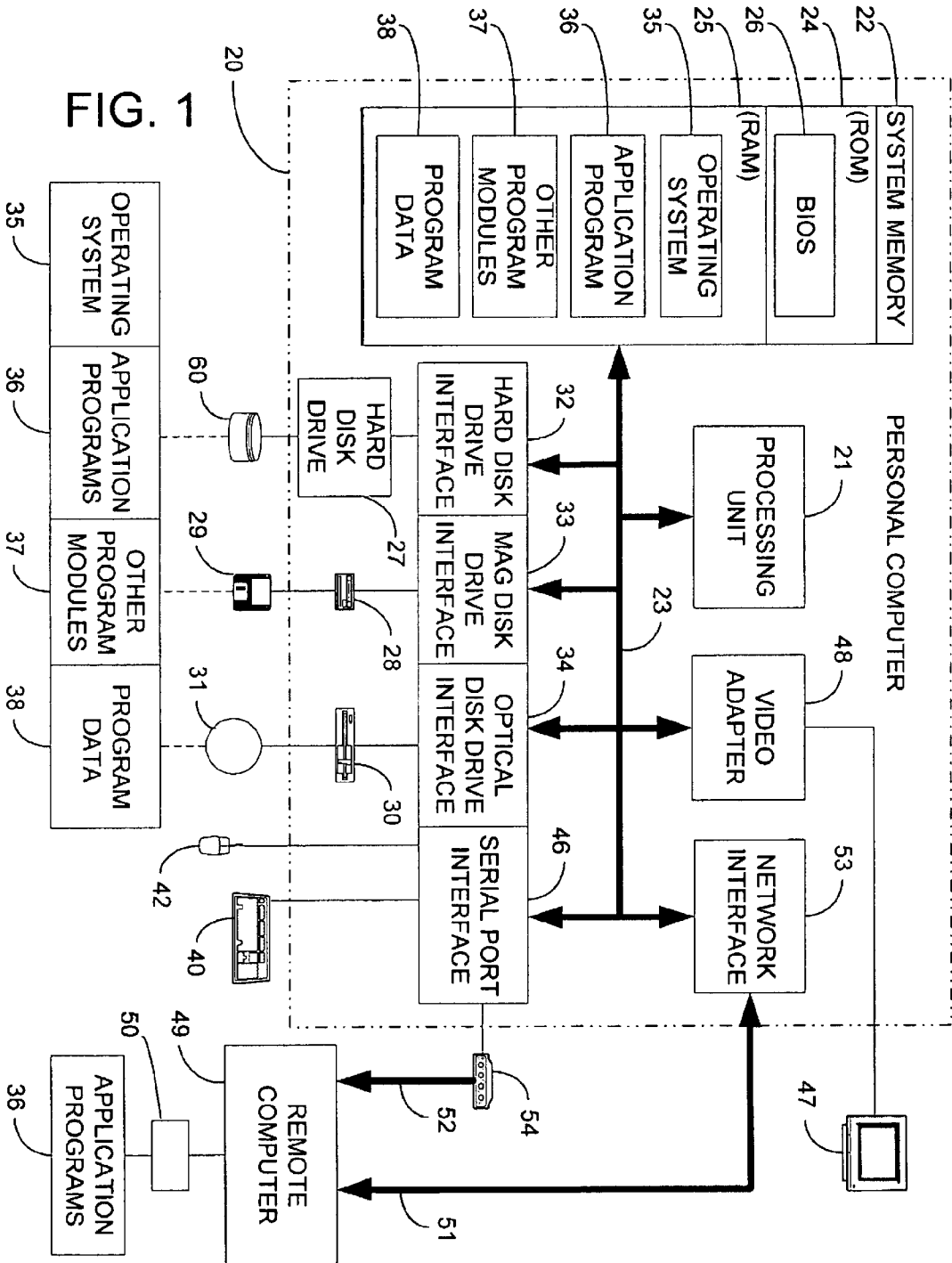
(74) *Attorney, Agent, or Firm*—Leydig, Voit & Mayer, Ltd.

(57) **ABSTRACT**

A protocol independent implementation of the OBEX specification that allows OBEX applications to communicate without having to know transport specific details is presented. OBEX services reside on top of an OBEX layer and the layer communicates with the transports with an interface that is independent of the transport protocol and other interfaces are provided when connections are created. OBEX applications use the protocol independent interface to communicate with OBEX services and other applications and to transfer data via the transports. A primary interface is provided that has commands to enumerate transports and to enumerate devices. Other interfaces include a transport interface for communicating with a transport, a service interface for determining when an incoming connection arrives, and a device interface for communicating with the at least one device.

**15 Claims, 7 Drawing Sheets**





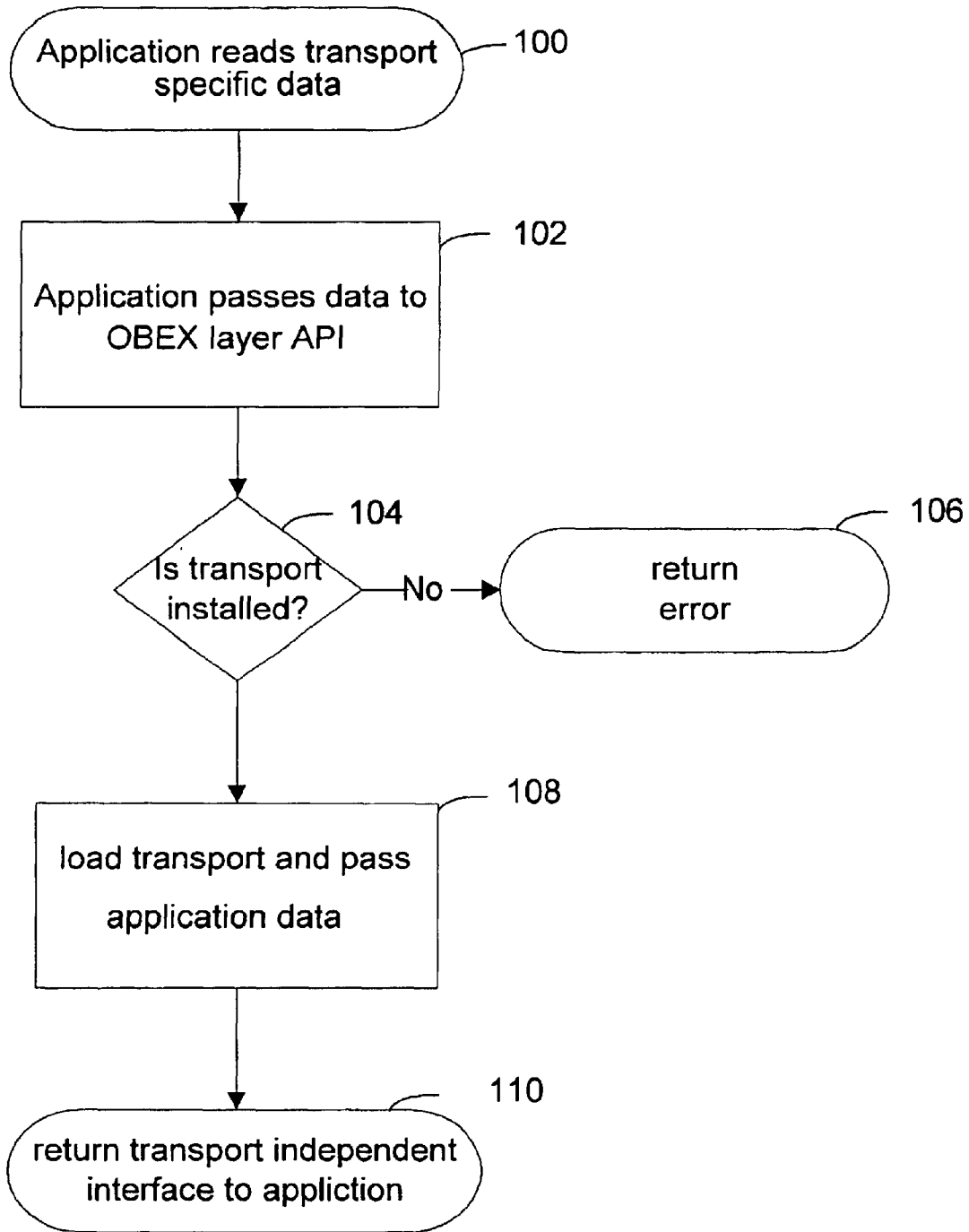


FIG. 2

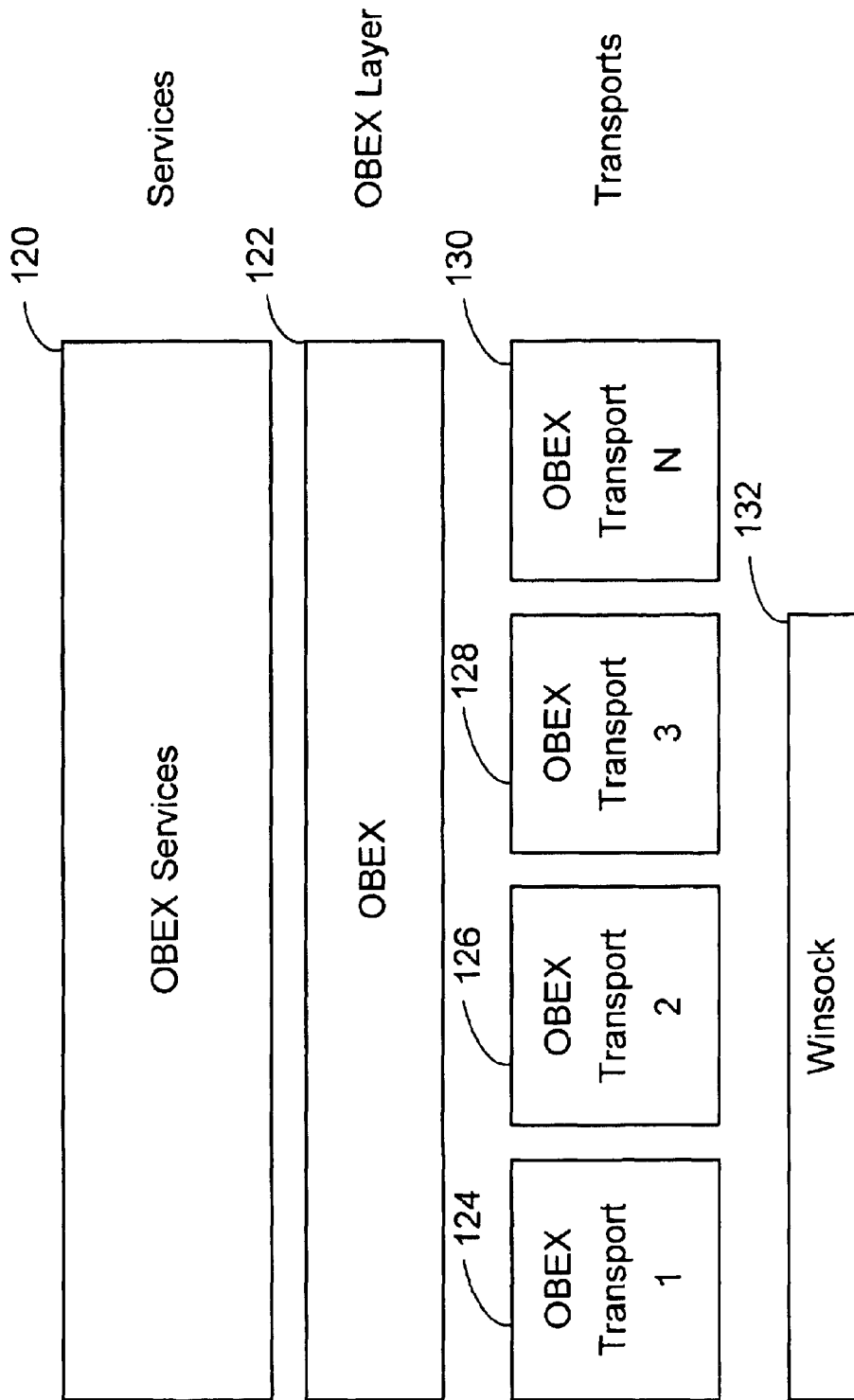


FIG. 3

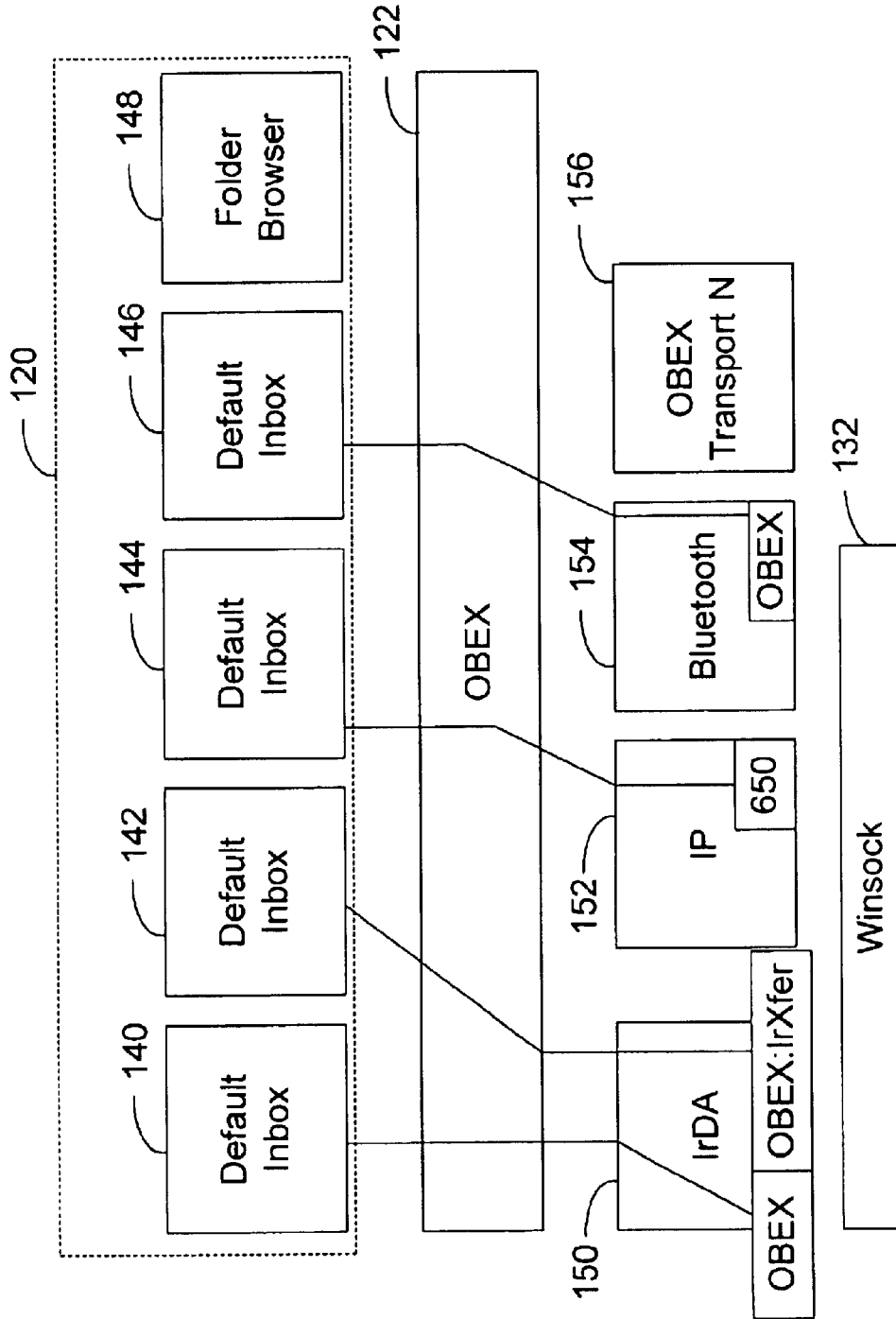


FIG. 4

# Explore Litigation Insights

Docket Alarm provides insights to develop a more informed litigation strategy and the peace of mind of knowing you're on top of things.

## Real-Time Litigation Alerts



Keep your litigation team up-to-date with **real-time alerts** and advanced team management tools built for the enterprise, all while greatly reducing PACER spend.

Our comprehensive service means we can handle Federal, State, and Administrative courts across the country.

## Advanced Docket Research



With over 230 million records, Docket Alarm's cloud-native docket research platform finds what other services can't. Coverage includes Federal, State, plus PTAB, TTAB, ITC and NLRB decisions, all in one place.

Identify arguments that have been successful in the past with full text, pinpoint searching. Link to case law cited within any court document via Fastcase.

## Analytics At Your Fingertips



Learn what happened the last time a particular judge, opposing counsel or company faced cases similar to yours.

Advanced out-of-the-box PTAB and TTAB analytics are always at your fingertips.

## API

Docket Alarm offers a powerful API (application programming interface) to developers that want to integrate case filings into their apps.

## LAW FIRMS

Build custom dashboards for your attorneys and clients with live data direct from the court.

Automate many repetitive legal tasks like conflict checks, document management, and marketing.

## FINANCIAL INSTITUTIONS

Litigation and bankruptcy checks for companies and debtors.

## E-DISCOVERY AND LEGAL VENDORS

Sync your system to PACER to automate legal marketing.