



US006560642B1

(12) **United States Patent**
Nurmann

(10) **Patent No.:** **US 6,560,642 B1**
(45) **Date of Patent:** **May 6, 2003**

(54) **METHOD OF ESTABLISHING AN INTERNET PROTOCOL NETWORK UTILIZING IP GATEWAY THAT FUNCTIONS AS EITHER OR BOTH DHCP CLIENT AND DHCP SERVER**

(75) Inventor: **Jens Nurmann, Aachen (DE)**

(73) Assignee: **ELSA AG, Aachen (DE)**

(*) Notice: Subject to any disclaimer, the term of this patent is extended or adjusted under 35 U.S.C. 154(b) by 0 days.

(21) Appl. No.: **09/425,863**

(22) Filed: **Oct. 23, 1999**

(30) **Foreign Application Priority Data**

Oct. 26, 1998 (DE) 198 49 170

(51) **Int. Cl.**⁷ **G06F 15/177**

(52) **U.S. Cl.** **709/220; 709/221; 709/222; 709/223; 709/224; 709/225**

(58) **Field of Search** **709/220 225**

(56) **References Cited**

U.S. PATENT DOCUMENTS

5,557,748 A	9/1996	Norris	395/200.1
5,875,306 A *	2/1999	Bereiter	709/220
6,058,421 A *	5/2000	Fijolek et al.	709/225
6,070,187 A *	5/2000	Subramaniam et al.	709/220
6,115,545 A *	9/2000	Mellquist	709/220
6,185,678 B1 *	2/2001	Arbaugh et al.	713/2
6,230,194 B1 *	5/2001	Frailong et al.	709/220

* cited by examiner

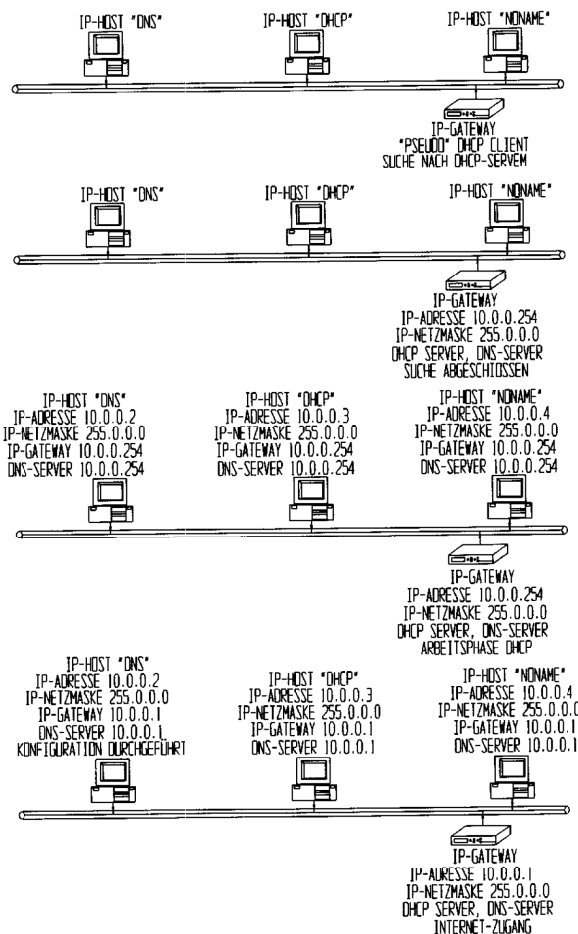
Primary Examiner—Nabil El-Hady

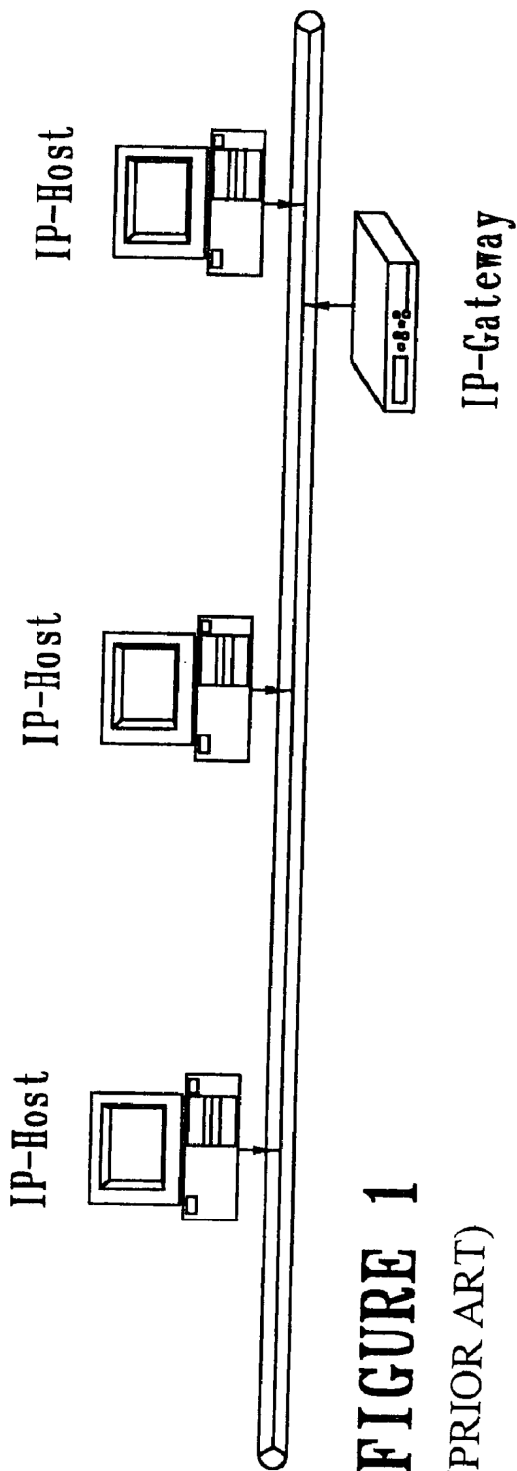
(74) *Attorney, Agent, or Firm*—Christopher Whewell

(57) **ABSTRACT**

This invention relates to a method of establishing an Internet Protocol network with several IP hosts and with an IP gateway for connecting the IP network to the Internet. The invention provides a method which no longer requires the knowledge of address mechanisms of the Internet protocol previously necessary for a successful establishment and thus prevents disturbances of errors during the establishment of an Internet Protocol network.

12 Claims, 4 Drawing Sheets





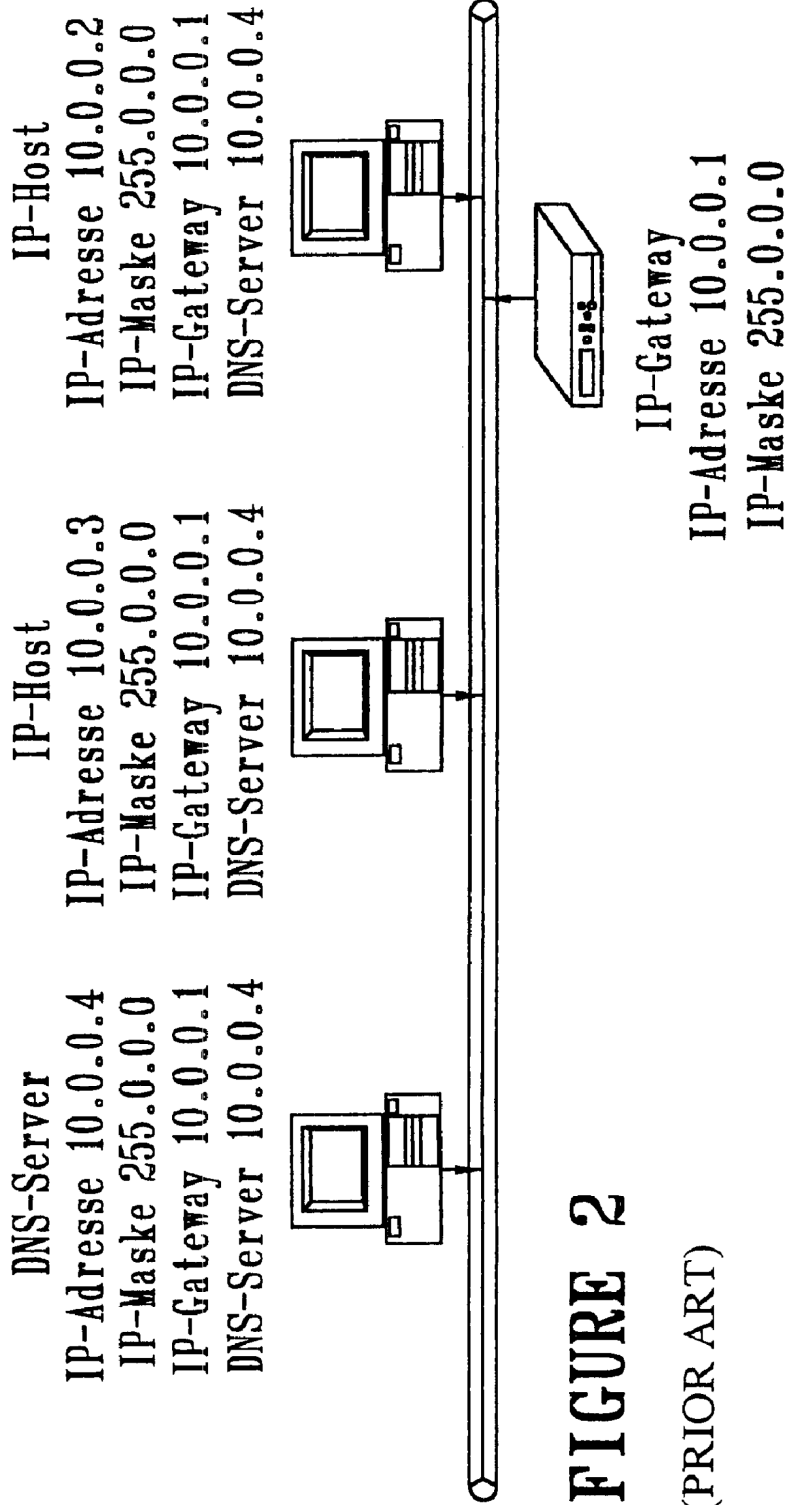


FIGURE 2

(PRIOR ART)

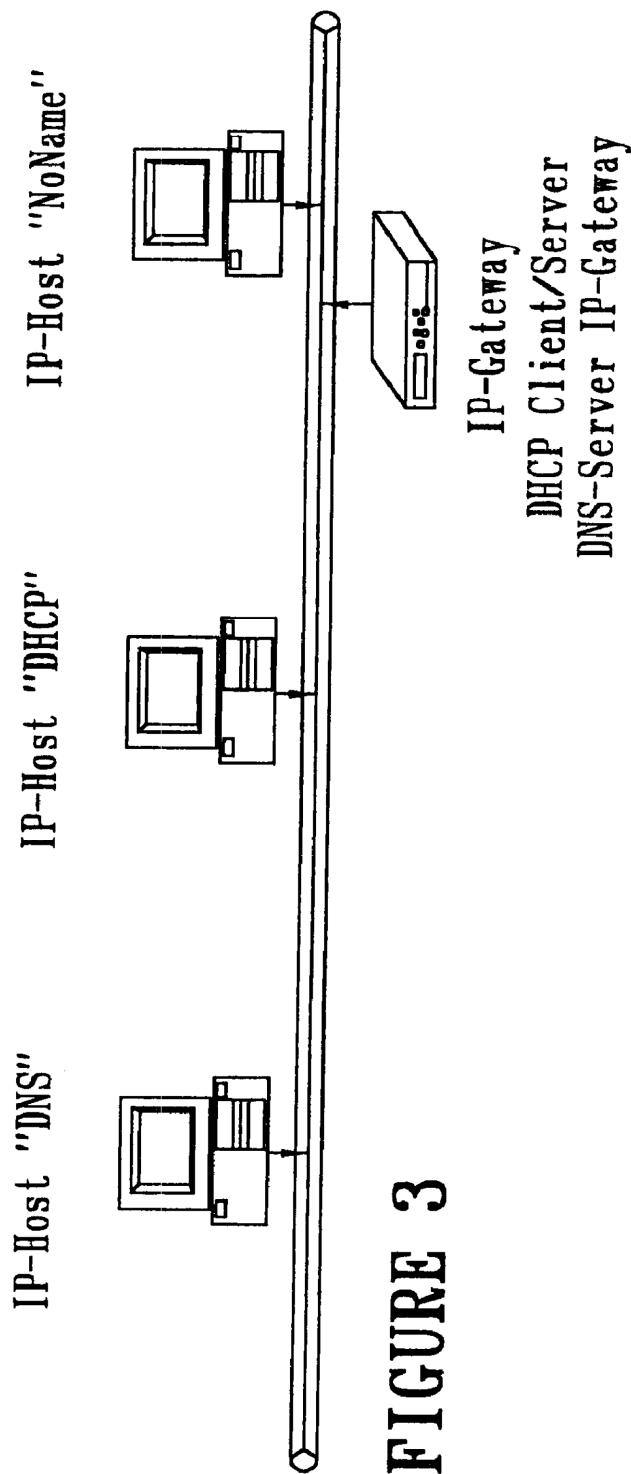


FIGURE 3

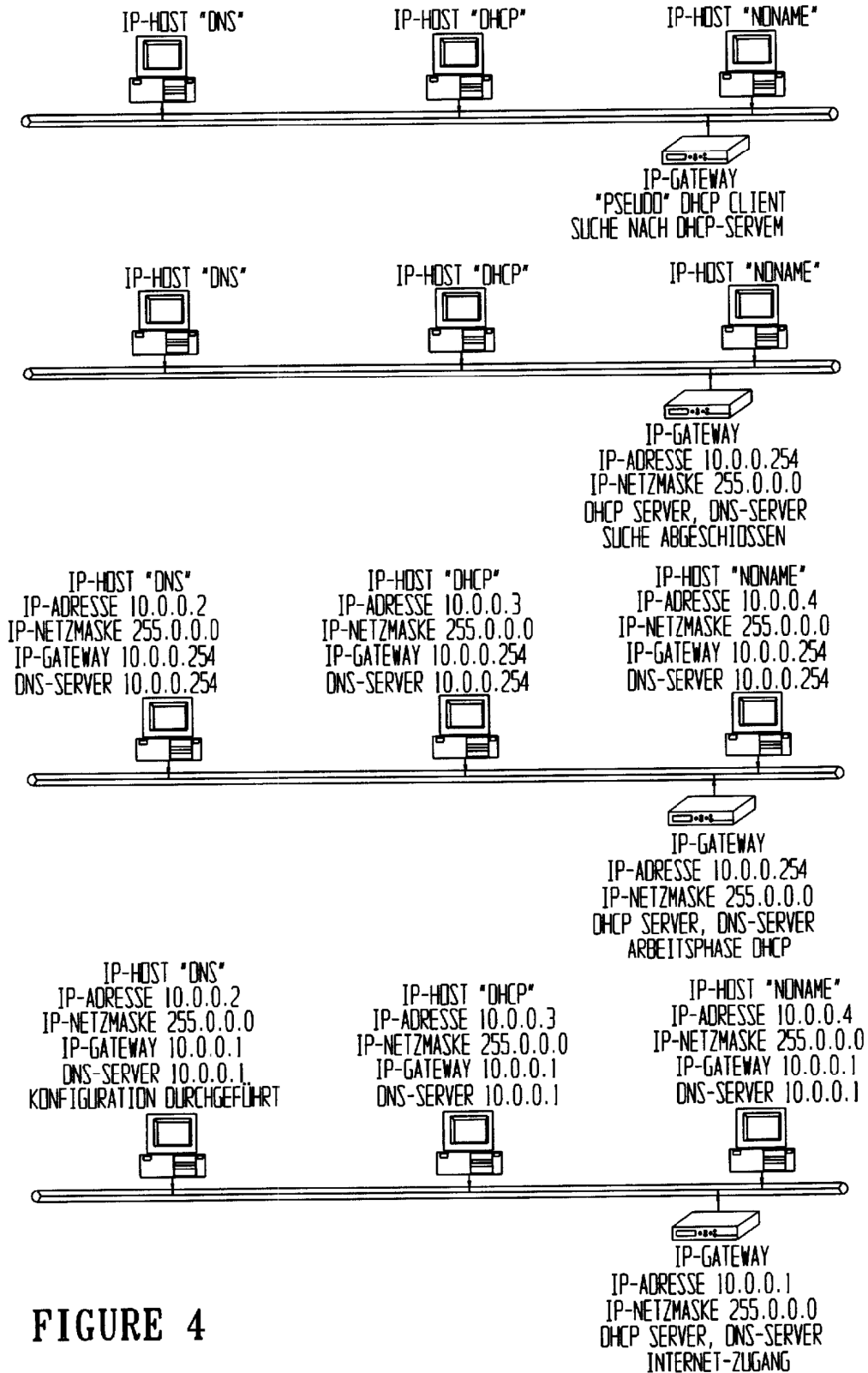


FIGURE 4

Explore Litigation Insights

Docket Alarm provides insights to develop a more informed litigation strategy and the peace of mind of knowing you're on top of things.

Real-Time Litigation Alerts



Keep your litigation team up-to-date with **real-time alerts** and advanced team management tools built for the enterprise, all while greatly reducing PACER spend.

Our comprehensive service means we can handle Federal, State, and Administrative courts across the country.

Advanced Docket Research



With over 230 million records, Docket Alarm's cloud-native docket research platform finds what other services can't. Coverage includes Federal, State, plus PTAB, TTAB, ITC and NLRB decisions, all in one place.

Identify arguments that have been successful in the past with full text, pinpoint searching. Link to case law cited within any court document via Fastcase.

Analytics At Your Fingertips



Learn what happened the last time a particular judge, opposing counsel or company faced cases similar to yours.

Advanced out-of-the-box PTAB and TTAB analytics are always at your fingertips.

API

Docket Alarm offers a powerful API (application programming interface) to developers that want to integrate case filings into their apps.

LAW FIRMS

Build custom dashboards for your attorneys and clients with live data direct from the court.

Automate many repetitive legal tasks like conflict checks, document management, and marketing.

FINANCIAL INSTITUTIONS

Litigation and bankruptcy checks for companies and debtors.

E-DISCOVERY AND LEGAL VENDORS

Sync your system to PACER to automate legal marketing.