



US007204123B2

(12) **United States Patent**
McMahan et al.

(10) **Patent No.:** **US 7,204,123 B2**
(45) **Date of Patent:** **Apr. 17, 2007**

(54) **ACCURACY ENHANCEMENT OF A SENSOR DURING AN ANOMALOUS EVENT**

(75) Inventors: **Lisa E. McMahan**, Tampa, FL (US);
Joseph G. Protola, Clearwater, FL (US);
Bruce Wayne Castleman, Pinellas Park, FL (US)

(73) Assignee: **Honeywell International Inc.**,
Morristown, NJ (US)

(*) Notice: Subject to any disclaimer, the term of this patent is extended or adjusted under 35 U.S.C. 154(b) by 94 days.

(21) Appl. No.: **10/842,063**

(22) Filed: **May 10, 2004**

(65) **Prior Publication Data**

US 2005/0210952 A1 Sep. 29, 2005

Related U.S. Application Data

(60) Provisional application No. 60/557,109, filed on Mar. 26, 2004.

(51) **Int. Cl.**
G01P 21/00 (2006.01)

(52) **U.S. Cl.** **73/1.37**

(58) **Field of Classification Search** 73/1.37-1.39;
324/602; 702/141

See application file for complete search history.

(56) **References Cited**

U.S. PATENT DOCUMENTS

4,385,699 A * 5/1983 Ashina 209/538

4,488,189 A *	12/1984	Axmear et al.	360/78.04
4,606,316 A *	8/1986	Komurasaki	123/406.16
4,712,427 A *	12/1987	Peters	73/514.29
5,175,438 A *	12/1992	Ikeda	250/574
5,371,718 A *	12/1994	Ikeda et al.	367/91
5,479,161 A *	12/1995	Keyes et al.	340/870.04
5,621,776 A *	4/1997	Gaubatz	376/242

FOREIGN PATENT DOCUMENTS

JP 63046961 A * 2/1988

OTHER PUBLICATIONS

Honeywell, Accelerex RBA500 Accelerometer, Jan. 2001, Publisher: Honeywell International Inc. (2 pgs.).

* cited by examiner

Primary Examiner—Hezron Williams

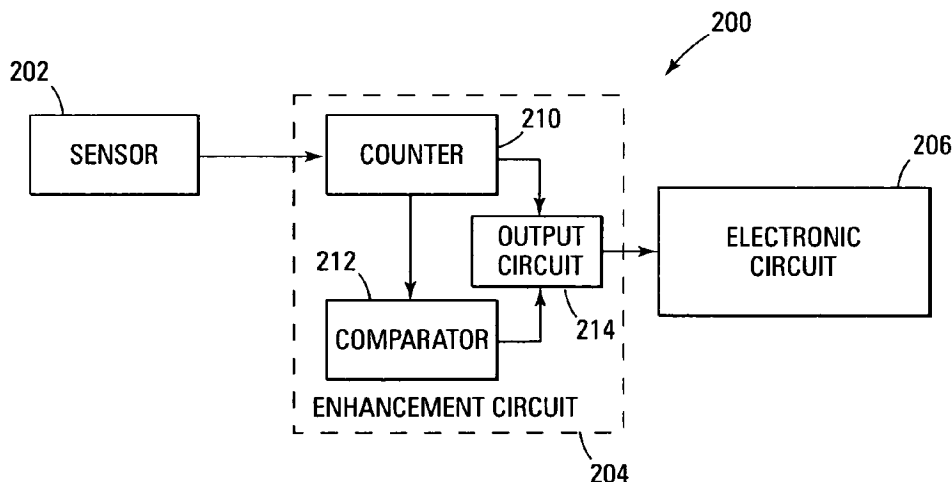
Assistant Examiner—Tamiko Bellamy

(74) *Attorney, Agent, or Firm*—Fogg & Powers LLC

(57) **ABSTRACT**

A method for enhancing the accuracy of a sensor is provided. The method includes determining a measure of the output of the sensor, determining whether the measure falls outside of an acceptable range for the output of the sensor, and, when the measure falls outside the acceptable range, modifying the measure of the output such that the measure falls within the acceptable range for the sensor.

22 Claims, 6 Drawing Sheets



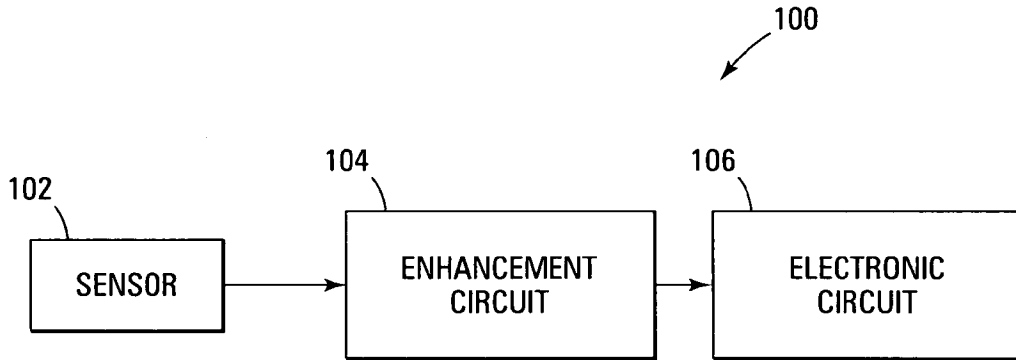


Fig. 1

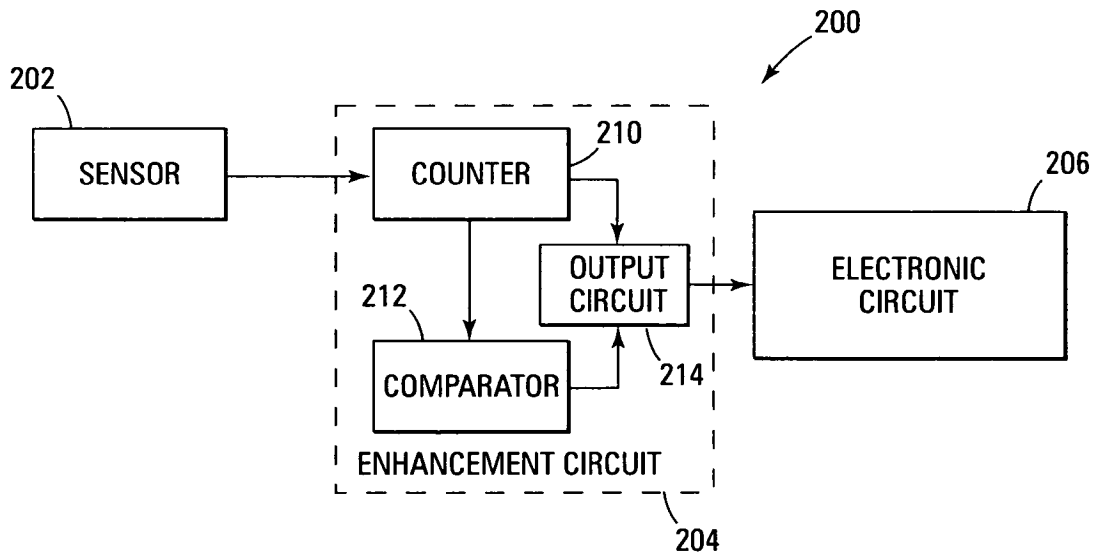


Fig. 2

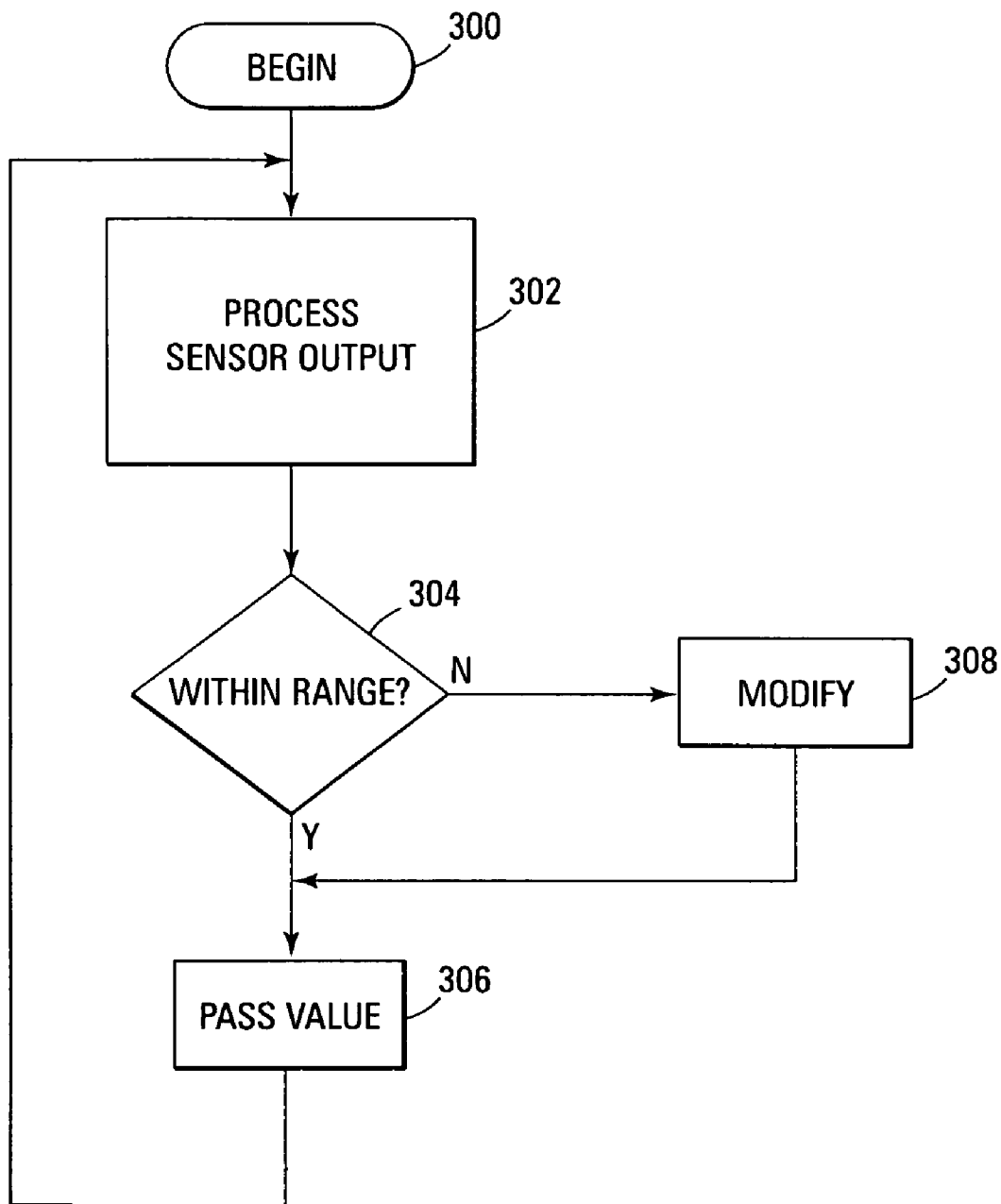


Fig. 3

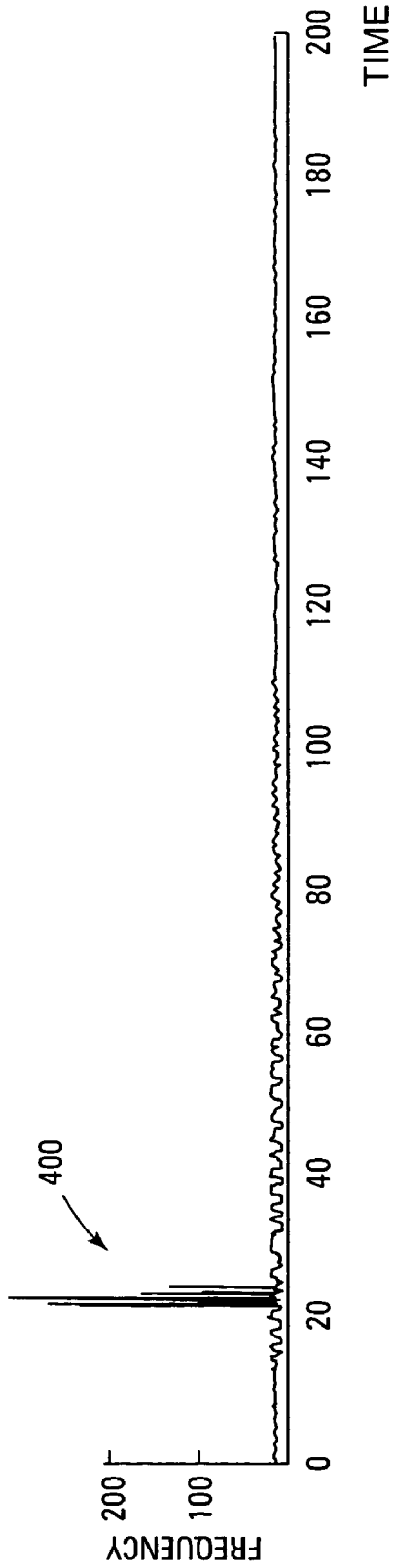


Fig. 4

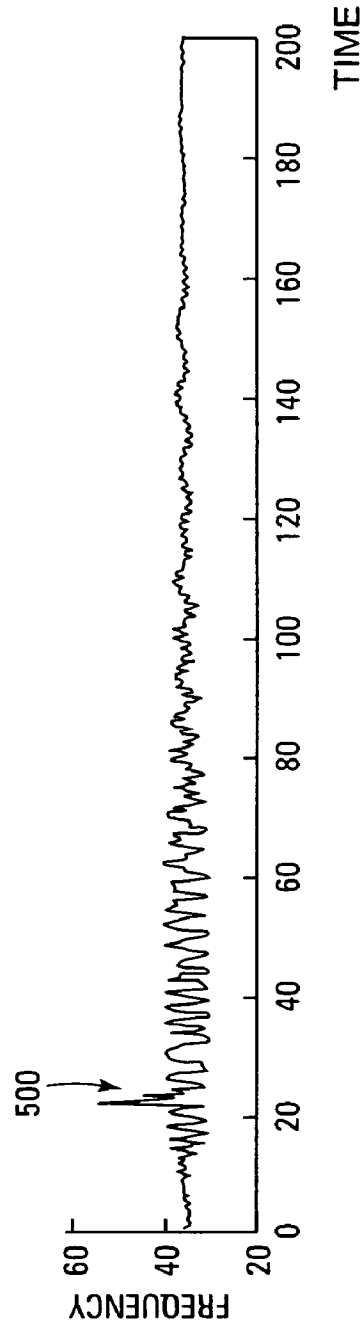


Fig. 5

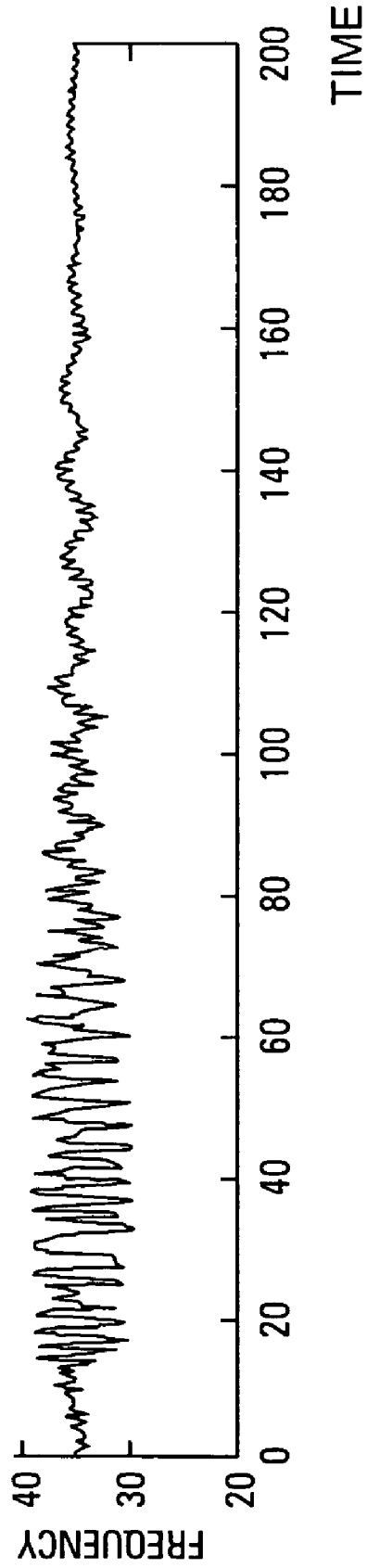


Fig. 6

Explore Litigation Insights

Docket Alarm provides insights to develop a more informed litigation strategy and the peace of mind of knowing you're on top of things.

Real-Time Litigation Alerts



Keep your litigation team up-to-date with **real-time alerts** and advanced team management tools built for the enterprise, all while greatly reducing PACER spend.

Our comprehensive service means we can handle Federal, State, and Administrative courts across the country.

Advanced Docket Research



With over 230 million records, Docket Alarm's cloud-native docket research platform finds what other services can't. Coverage includes Federal, State, plus PTAB, TTAB, ITC and NLRB decisions, all in one place.

Identify arguments that have been successful in the past with full text, pinpoint searching. Link to case law cited within any court document via Fastcase.

Analytics At Your Fingertips



Learn what happened the last time a particular judge, opposing counsel or company faced cases similar to yours.

Advanced out-of-the-box PTAB and TTAB analytics are always at your fingertips.

API

Docket Alarm offers a powerful API (application programming interface) to developers that want to integrate case filings into their apps.

LAW FIRMS

Build custom dashboards for your attorneys and clients with live data direct from the court.

Automate many repetitive legal tasks like conflict checks, document management, and marketing.

FINANCIAL INSTITUTIONS

Litigation and bankruptcy checks for companies and debtors.

E-DISCOVERY AND LEGAL VENDORS

Sync your system to PACER to automate legal marketing.