



US006721569B1

(12) **United States Patent**
Hashem et al.

(10) **Patent No.:** **US 6,721,569 B1**
(45) **Date of Patent:** **Apr. 13, 2004**

(54) **DYNAMIC SUB-CARRIER ASSIGNMENT IN OFDM SYSTEMS**

6,347,071 B1 * 2/2002 Cupo et al. 370/203
6,545,997 B1 * 4/2003 Bohnke et al. 370/347
6,584,092 B1 * 6/2003 Sudo 370/344

(75) Inventors: **Bassam M. Hashem, Nepean (CA); David G. Steer, Nepean (CA); Shalini S. Periyalwar, Ottawa (CA)**

FOREIGN PATENT DOCUMENTS

EP 1033853 A2 * 9/2000 H04L/27/26

(73) Assignee: **Nortel Networks Limited, St. Laurent (CA)**

OTHER PUBLICATIONS

Jack H. Winters, "Smart Antennas for Wireless Systems", IEEE Personal Communications, pp. 23-27, Feb. 1998.
Agrogyaswami J. Paulraj, et al. "Space-Time Modems for Wireless Personal Communication", IEEE Personal Communications, pp. 36-47, Feb. 1998.

(*) Notice: Subject to any disclaimer, the term of this patent is extended or adjusted under 35 U.S.C. 154(b) by 419 days.

* cited by examiner

(21) Appl. No.: **09/672,704**

Primary Examiner—Cong Van Tran

(22) Filed: **Sep. 29, 2000**

(51) **Int. Cl.**⁷ **H04Q 7/20**

(57) **ABSTRACT**

(52) **U.S. Cl.** **455/450; 455/509; 455/414.1; 455/464; 370/203; 370/208**

A method and apparatus are provided for selecting and signaling the identity of sub-carriers to be used for transmission of data in a radio communication system, and for using other sub-carriers. A remote unit determines which sub-carriers are acceptable for use in data transmission by comparing the signal to interference ratio of each sub-carrier with a threshold. A base station transmits data over the acceptable sub-carriers at the optimum Link Mode or Link Modes. The base station may use some of the unacceptable sub-carriers for transmission of low sensitivity data at the optimum Link Mode, and may use some of the unacceptable sub-carriers for transmission of data at a lower Link Mode. The transmission power any unused unacceptable sub-carriers can be diverted to other sub-carriers.

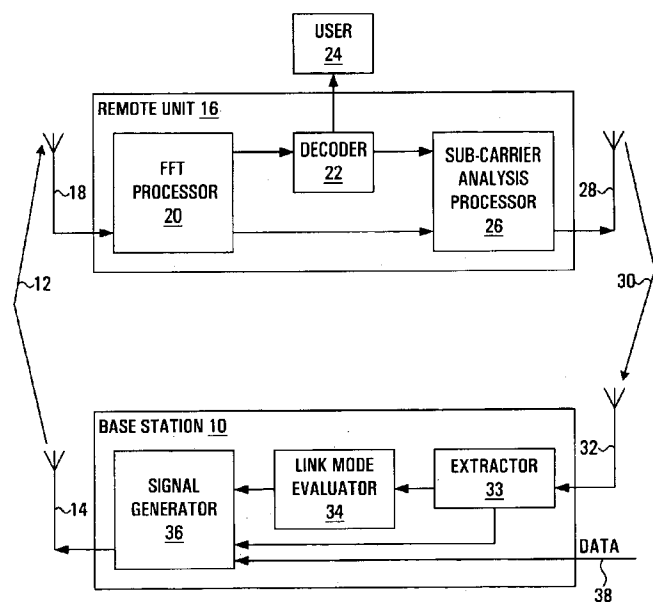
(58) **Field of Search** 455/450, 455, 455/464, 509, 511, 515, 154.1, 166.2, 185.1, 130, 135, 277.2, 403, 408, 407, 414.1; 370/343, 344, 330, 341, 342, 208, 203, 480; 375/260, 349

(56) **References Cited**

U.S. PATENT DOCUMENTS

5,726,978 A * 3/1998 Frodigh et al. 370/252
5,748,677 A * 5/1998 Kumar 375/285
5,867,478 A * 2/1999 Baum et al. 370/203
5,889,759 A * 3/1999 McGibney 370/207
6,243,424 B1 * 6/2001 Kroeger et al. 375/265
6,298,035 B1 * 10/2001 Heiskala 370/206

23 Claims, 6 Drawing Sheets



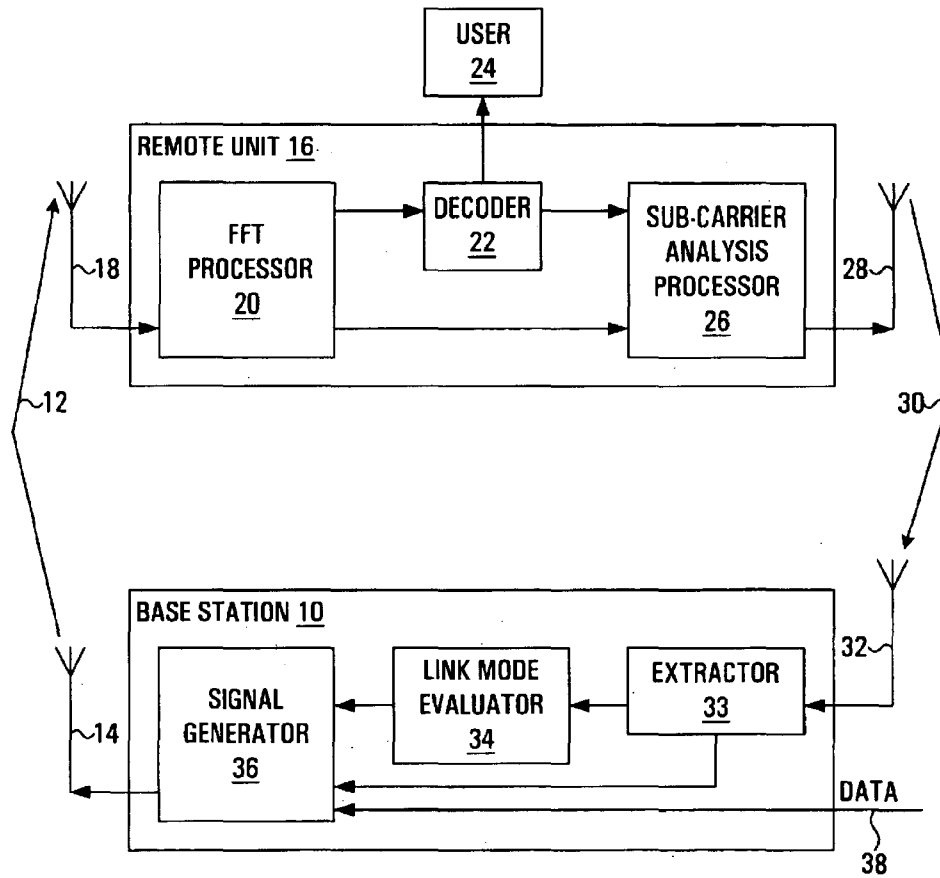


FIG. 1

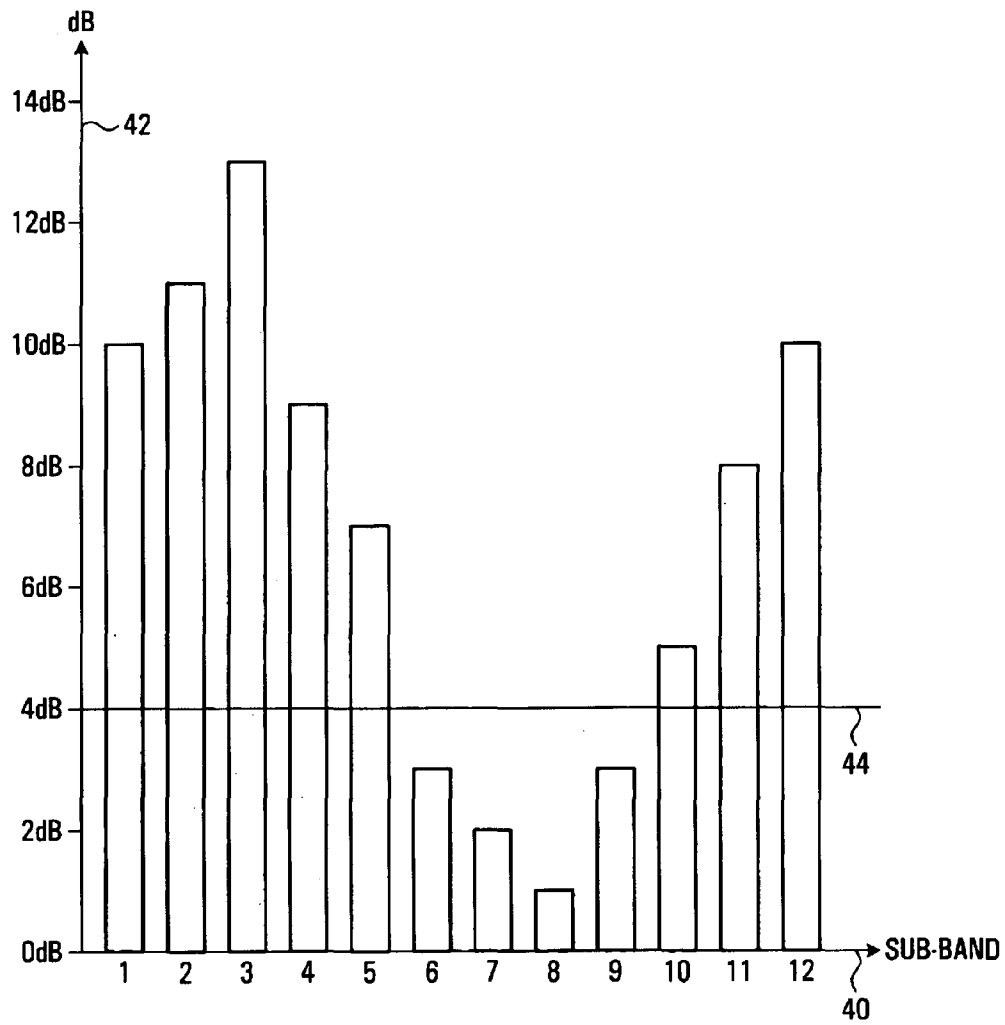


FIG. 2

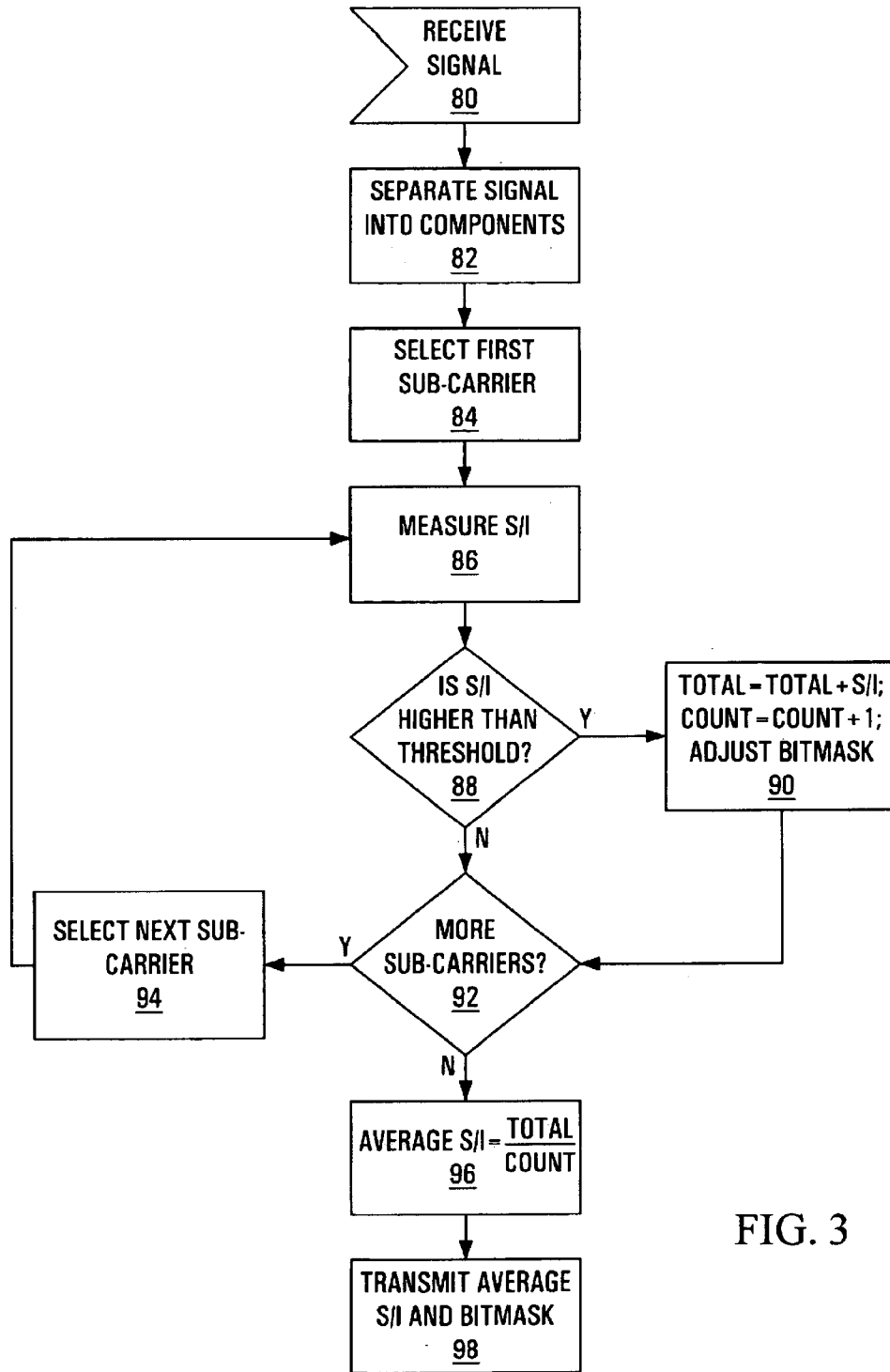


FIG. 3

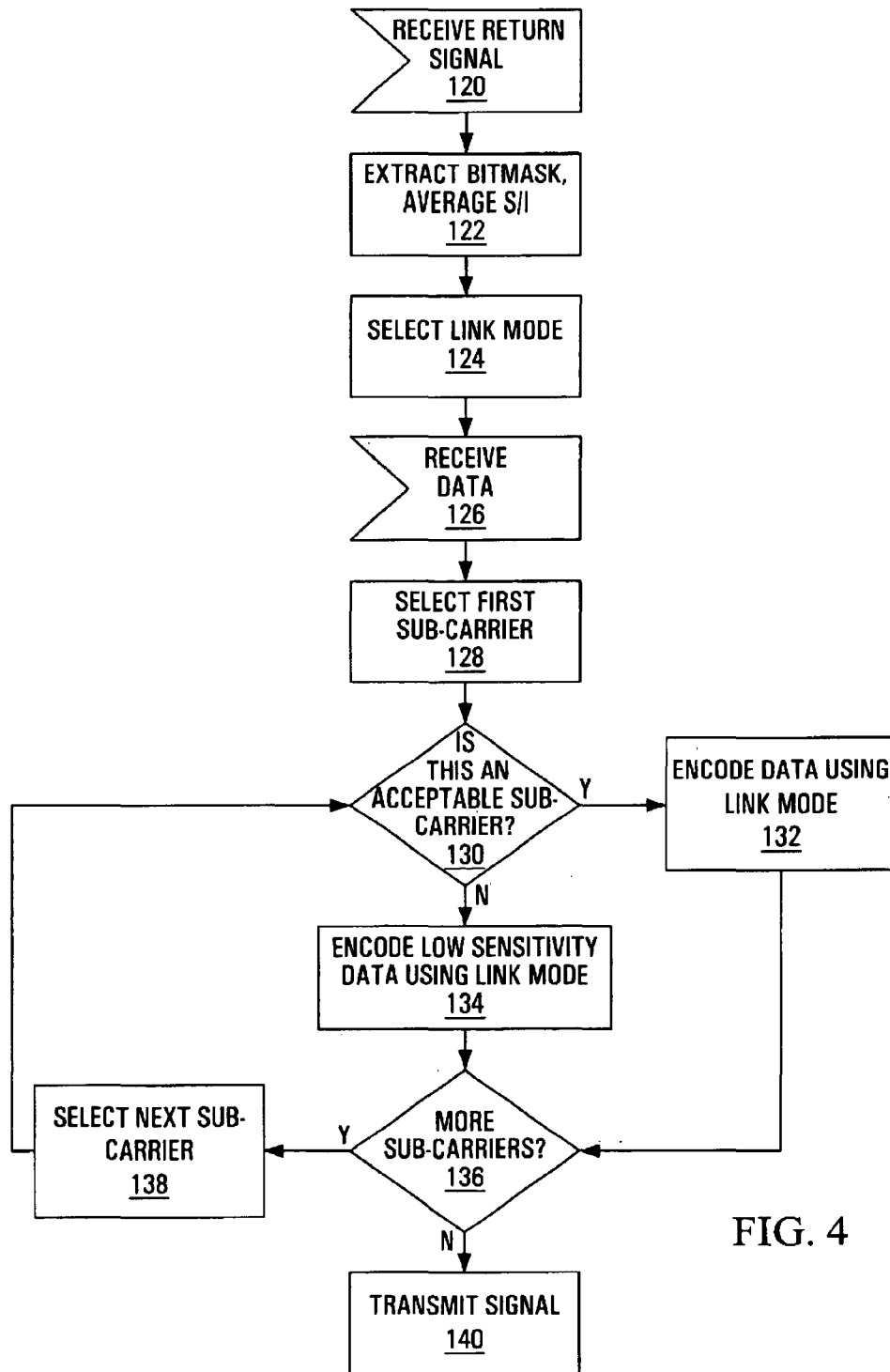


FIG. 4

Explore Litigation Insights

Docket Alarm provides insights to develop a more informed litigation strategy and the peace of mind of knowing you're on top of things.

Real-Time Litigation Alerts



Keep your litigation team up-to-date with **real-time alerts** and advanced team management tools built for the enterprise, all while greatly reducing PACER spend.

Our comprehensive service means we can handle Federal, State, and Administrative courts across the country.

Advanced Docket Research



With over 230 million records, Docket Alarm's cloud-native docket research platform finds what other services can't. Coverage includes Federal, State, plus PTAB, TTAB, ITC and NLRB decisions, all in one place.

Identify arguments that have been successful in the past with full text, pinpoint searching. Link to case law cited within any court document via Fastcase.

Analytics At Your Fingertips



Learn what happened the last time a particular judge, opposing counsel or company faced cases similar to yours.

Advanced out-of-the-box PTAB and TTAB analytics are always at your fingertips.

API

Docket Alarm offers a powerful API (application programming interface) to developers that want to integrate case filings into their apps.

LAW FIRMS

Build custom dashboards for your attorneys and clients with live data direct from the court.

Automate many repetitive legal tasks like conflict checks, document management, and marketing.

FINANCIAL INSTITUTIONS

Litigation and bankruptcy checks for companies and debtors.

E-DISCOVERY AND LEGAL VENDORS

Sync your system to PACER to automate legal marketing.