



US005155689A

United States Patent [19]

[11] Patent Number: **5,155,689**

Wortham

[45] Date of Patent: **Oct. 13, 1992**

[54] **VEHICLE LOCATING AND COMMUNICATING METHOD AND APPARATUS**

4,993,062	2/1991	Dula et al.	379/200
4,998,291	3/1991	Marui et al.	379/58
5,058,201	10/1991	Ishii et al.	455/33

[75] Inventor: **Larry C. Wortham**, Garland, Tex.

FOREIGN PATENT DOCUMENTS

[73] Assignee: **By-Word Technologies, Inc.**, Dallas, Tex.

3516357	11/1986	Fed. Rep. of Germany	.
0161941	9/1984	Japan	.
017553	7/1988	Japan	.
021923	8/1988	Japan	.
022622	6/1989	Japan	.

[21] Appl. No.: **642,436**

[22] Filed: **Jan. 17, 1991**

[51] Int. Cl.⁵ **G01S 3/02**

[52] U.S. Cl. **364/460; 340/990; 340/995; 364/449**

[58] Field of Search **364/448, 449, 460; 340/990-995; 342/450, 451, 457, 463; 379/58, 59, 200, 60; 455/67, 92, 99, 33**

OTHER PUBLICATIONS

Gary D. Ott; Vehicle Location in Cellular Mobile Radio System; Feb. 1977; IEEE vol. VT-26, No. 1, pp. 43-46.

Primary Examiner—Parshotam S. Lall
Assistant Examiner—Michael Zanelli
Attorney, Agent, or Firm—Harold E. Meier

[56] References Cited

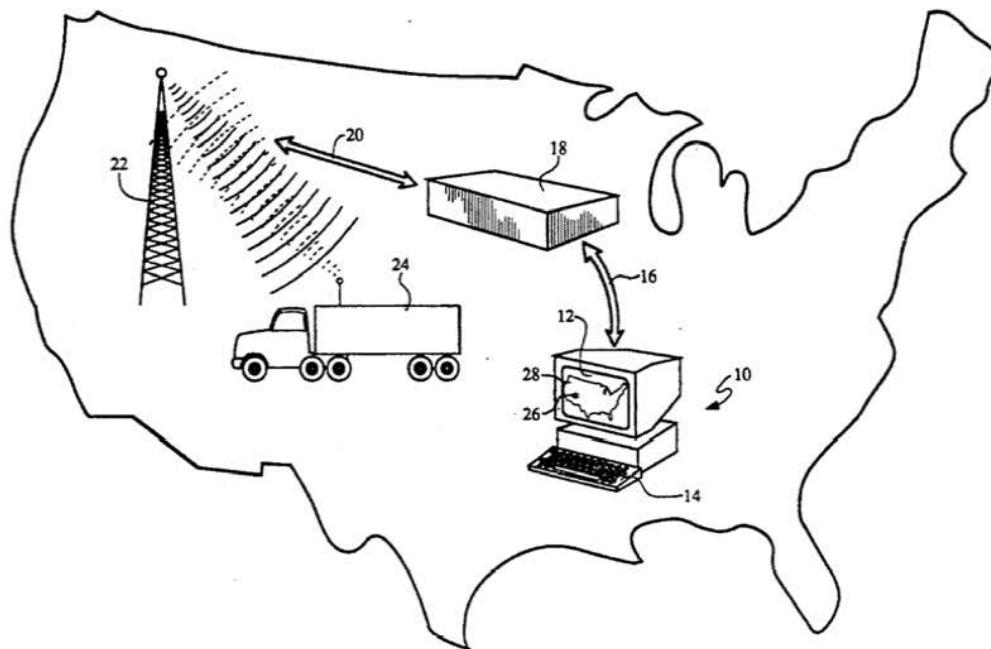
U.S. PATENT DOCUMENTS

3,906,166	9/1975	Cooper et al.	379/60
4,644,351	2/1987	Zabarsky et al.	379/57
4,654,879	3/1987	Goldman et al.	455/33
4,670,905	6/1987	Sandvos et al.	379/60
4,737,978	4/1988	Burke et al.	379/60
4,775,999	10/1988	Williams	379/59
4,797,948	1/1989	Milliorn et al.	379/58
4,804,937	2/1989	Barbiaux et al.	364/424.01
4,819,174	4/1989	Furuno et al.	364/449
4,876,738	10/1989	Selby	379/60
4,884,208	11/1989	Marinelli et al.	364/460
4,891,650	1/1990	Sheffer	342/457
4,897,642	1/1990	DiLullo et al.	364/424.01
4,905,270	2/1990	Ono	379/58
4,914,686	4/1990	Hager, III et al.	379/58
4,945,570	7/1990	Gerson et al.	379/58
4,963,865	10/1990	Ichikawa et al.	364/449

[57] ABSTRACT

A method and apparatus for locating and communicating with vehicles is provided, including at least one mobile cellular unit connected to at least one microprocessor and installed within a vehicle. The microprocessor interrogates the mobile cellular unit to obtain location information from an overhead message stream transmitted from cellular telephone transmitter sites. The location is displayed on a display located in the vehicle or the microprocessor periodically instructs the mobile cellular unit to initiate a call to a host controller and, upon receipt of transmitting instructions from the host controller, transmits the location information for display on a screen connected to the host controller.

31 Claims, 6 Drawing Sheets



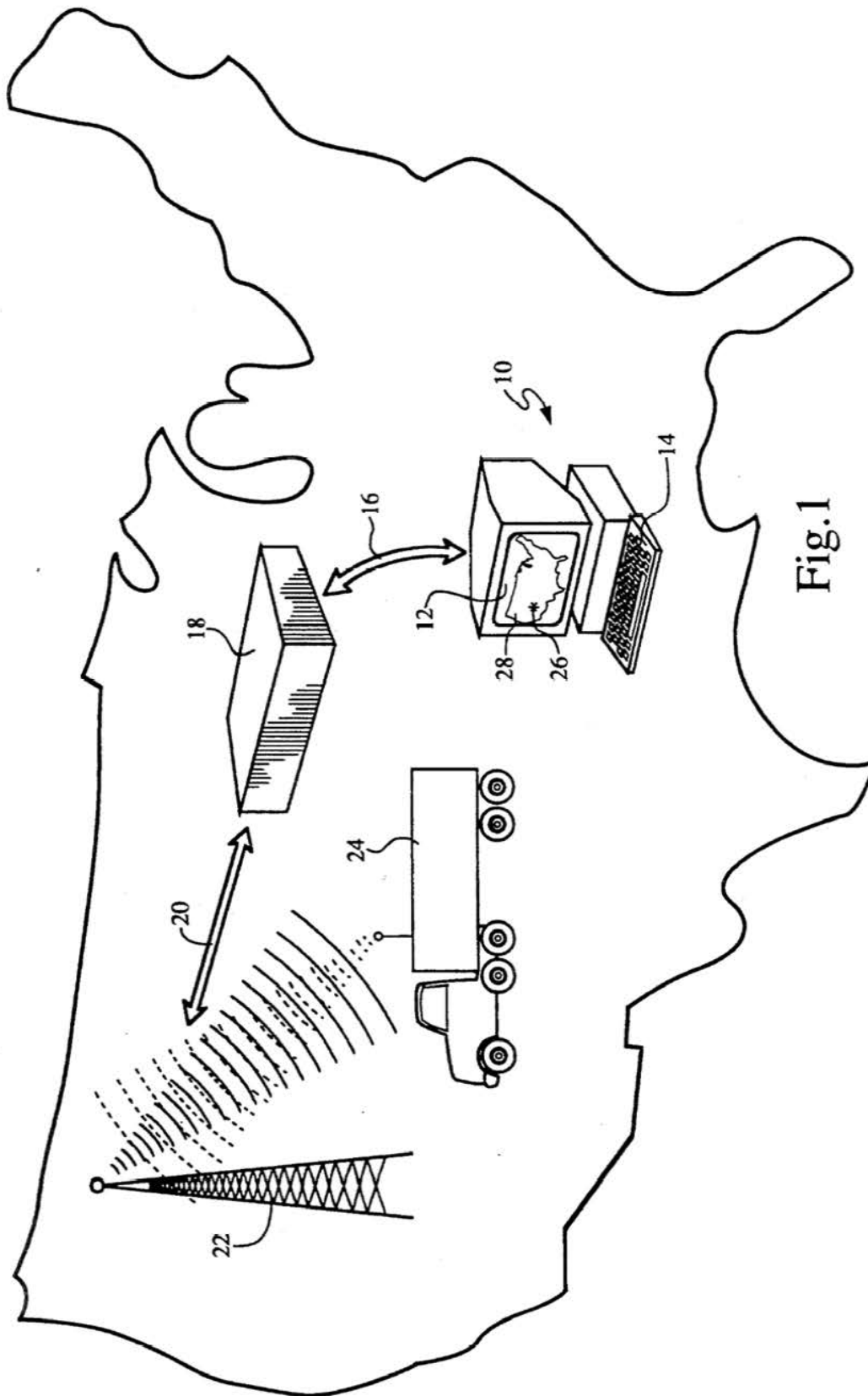
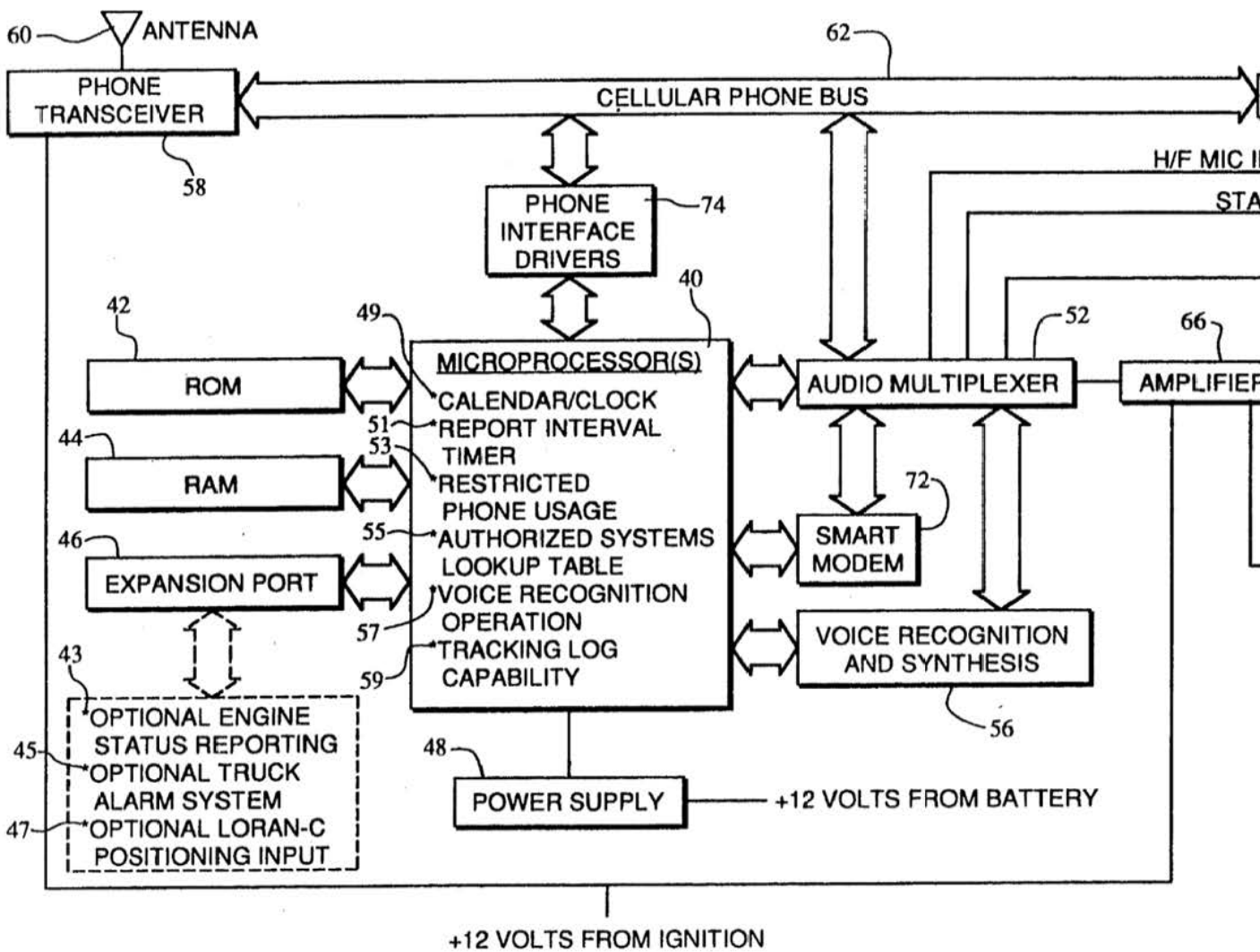


Fig. 1



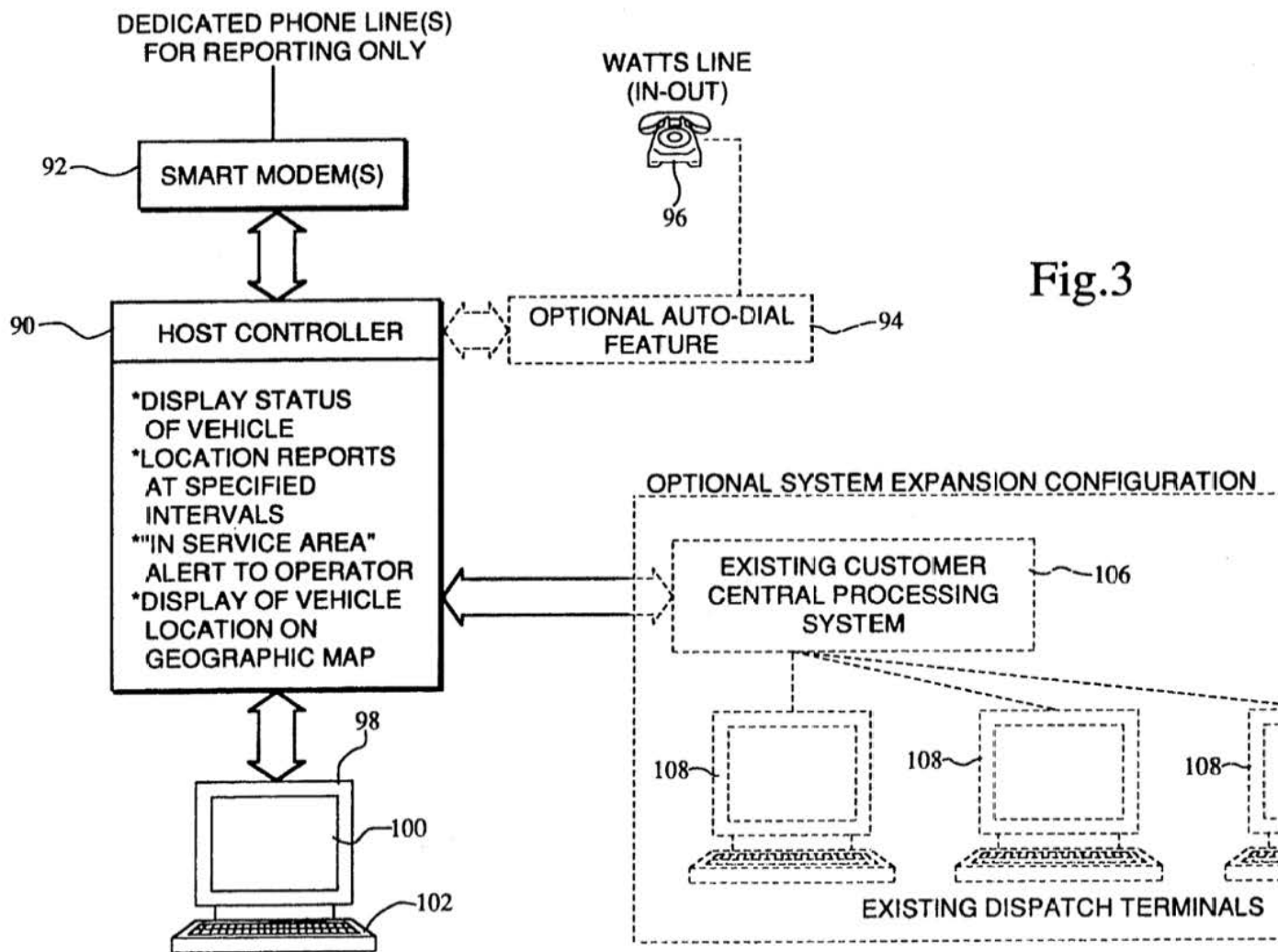


Fig.3

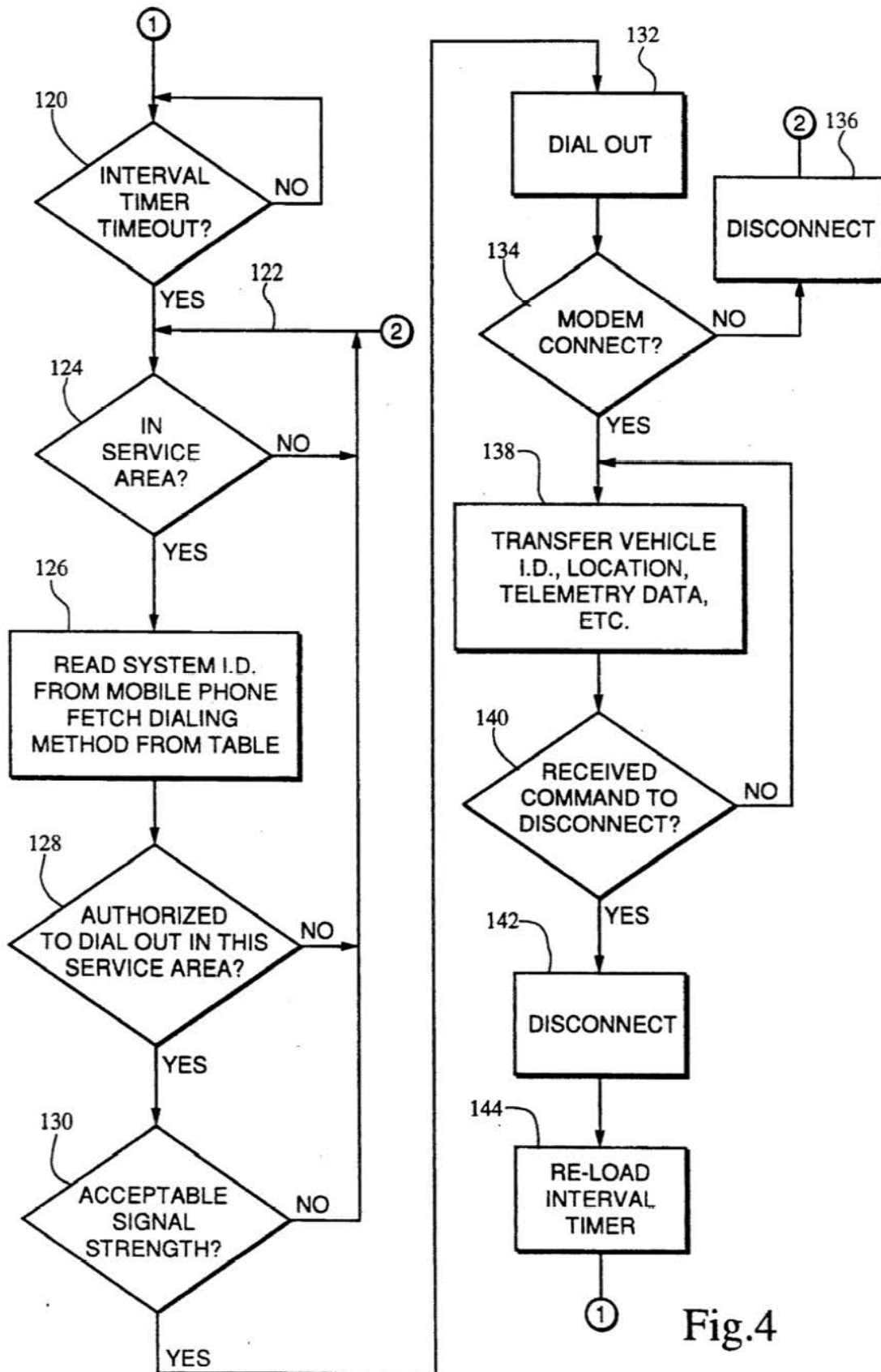


Fig.4

Explore Litigation Insights

Docket Alarm provides insights to develop a more informed litigation strategy and the peace of mind of knowing you're on top of things.

Real-Time Litigation Alerts



Keep your litigation team up-to-date with **real-time alerts** and advanced team management tools built for the enterprise, all while greatly reducing PACER spend.

Our comprehensive service means we can handle Federal, State, and Administrative courts across the country.

Advanced Docket Research



With over 230 million records, Docket Alarm's cloud-native docket research platform finds what other services can't. Coverage includes Federal, State, plus PTAB, TTAB, ITC and NLRB decisions, all in one place.

Identify arguments that have been successful in the past with full text, pinpoint searching. Link to case law cited within any court document via Fastcase.

Analytics At Your Fingertips



Learn what happened the last time a particular judge, opposing counsel or company faced cases similar to yours.

Advanced out-of-the-box PTAB and TTAB analytics are always at your fingertips.

API

Docket Alarm offers a powerful API (application programming interface) to developers that want to integrate case filings into their apps.

LAW FIRMS

Build custom dashboards for your attorneys and clients with live data direct from the court.

Automate many repetitive legal tasks like conflict checks, document management, and marketing.

FINANCIAL INSTITUTIONS

Litigation and bankruptcy checks for companies and debtors.

E-DISCOVERY AND LEGAL VENDORS

Sync your system to PACER to automate legal marketing.