

- [54] SWITCHING VOLTAGE REGULATOR CIRCUIT
- [75] Inventor: Carl T. Nelson, San Jose, Calif.
- [73] Assignee: Linear Technology Corporation, Milpitas, Calif.
- [21] Appl. No.: 82,989
- [22] Filed: Aug. 3, 1987

OTHER PUBLICATIONS

Data sheet, "Switching Dc-to-DC Microconverters—LSH 6300 Series", date unknown.
 Data sheet, Unitrod UC 1846 Current Mode PWM Controller integrated circuit, 12/83.
 Documents relating to the Linear Technology Corporation LT-1070 integrated circuit.

Primary Examiner—Patrick R. Salce
 Assistant Examiner—Kristine Peckman
 Attorney, Agent, or Firm—Laurence S. Rogers

Related U.S. Application Data

[63] Continuation of Ser. No. 932,158, Nov. 18, 1986, abandoned.

- [51] Int. Cl.⁴ G05F 1/563
- [52] U.S. Cl. 323/285; 323/299; 363/21
- [58] Field of Search 363/20, 21, 97, 131; 323/282, 284, 285, 299, 267

[57] ABSTRACT

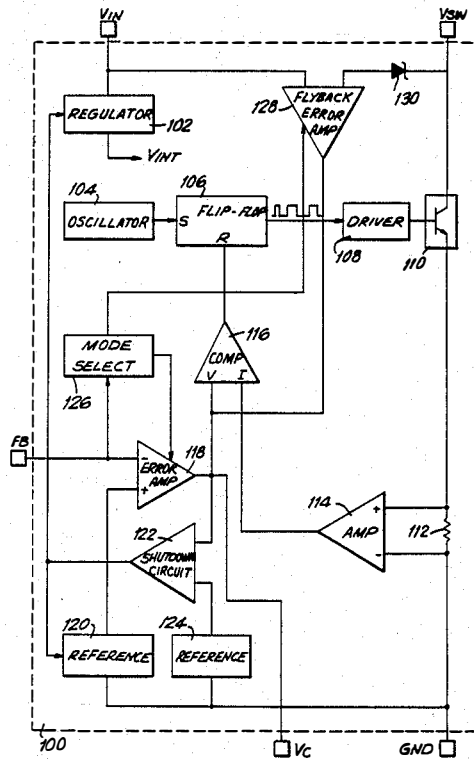
An integrated circuit for use in implementing a switching voltage regulator, the integrated circuit including a power switching transistor, driver circuitry and control circuitry, which is operable in a normal feedback mode or an isolated flyback mode. The integrated circuit includes shutdown circuitry for placing the regulator in a micro-power sleep mode, and can be packaged in a five-pin conventional power transistor package. The terminals of the integrated circuit regulator perform multiple functions. A compensation terminal is used for frequency compensation, current limiting, soft-start operation and shutdown. A feedback terminal is used as a feedback input when the integrated circuit is in feedback mode, and as a logic pin to program the regulator for isolated flyback operation. The feedback terminal is also used to trim the flyback reference voltage.

[56] References Cited

U.S. PATENT DOCUMENTS

4,146,832	3/1979	McConnell	323/285
4,209,826	6/1980	Priegnitz	363/21
4,253,137	2/1981	Rao	363/21
4,425,612	1/1984	Bahler et al.	363/21
4,641,229	2/1987	Easter	363/21
4,652,808	3/1987	Mostyn et al.	323/299 X

81 Claims, 8 Drawing Sheets



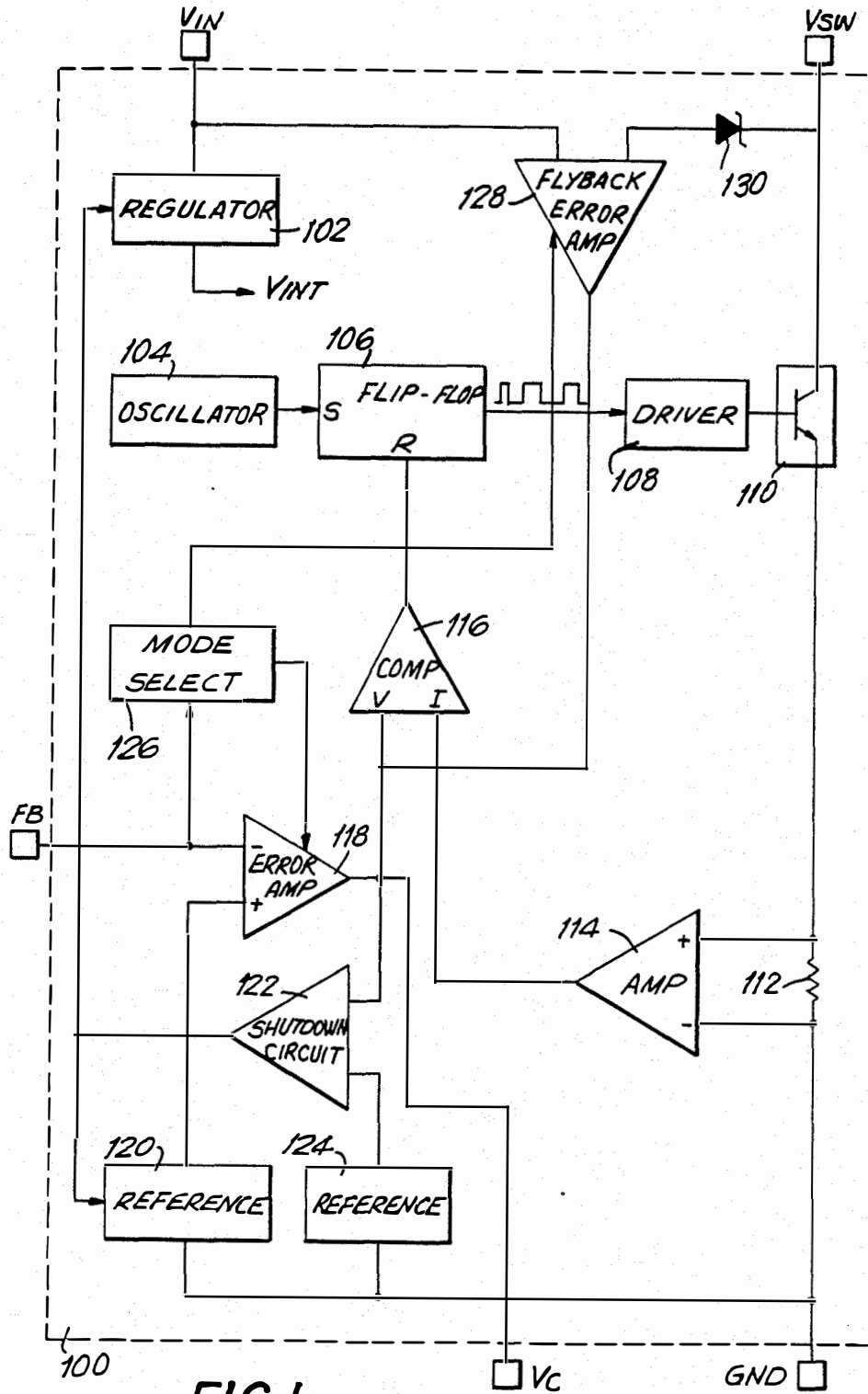
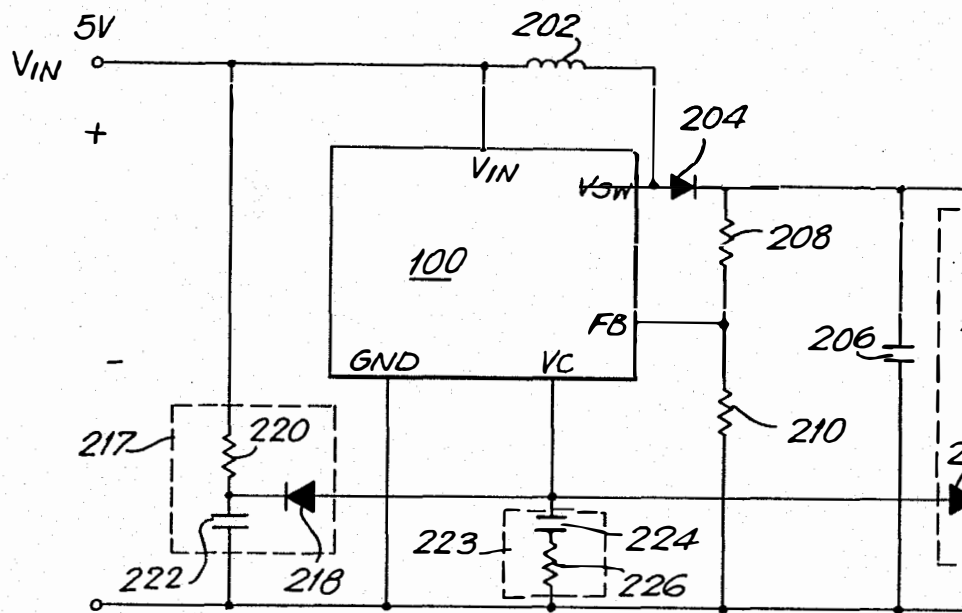
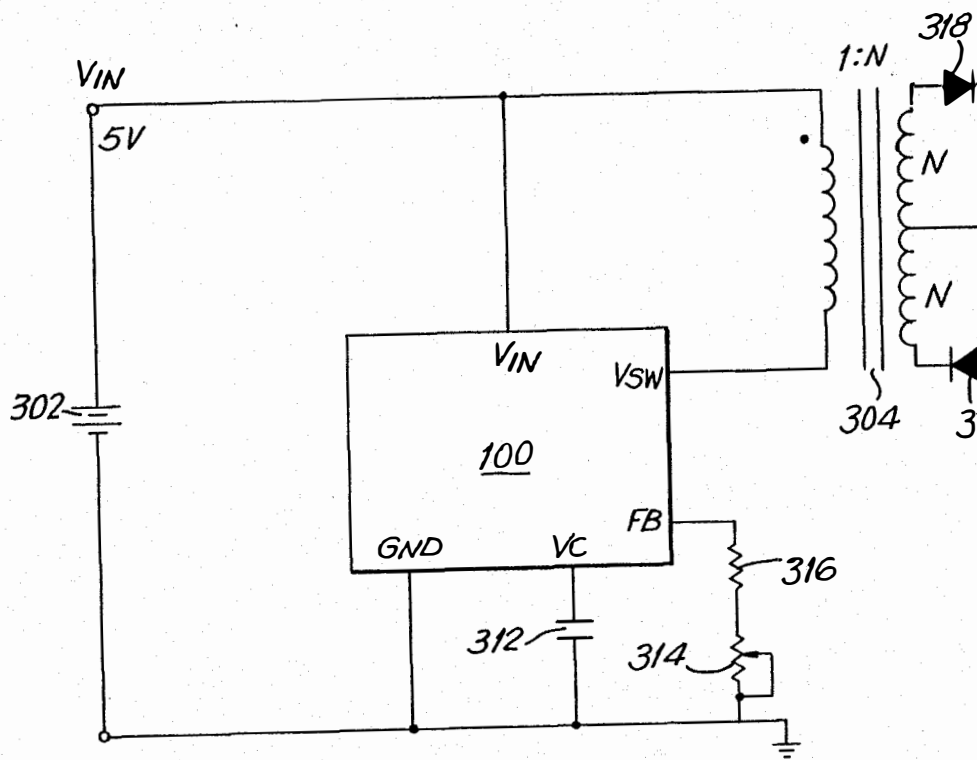
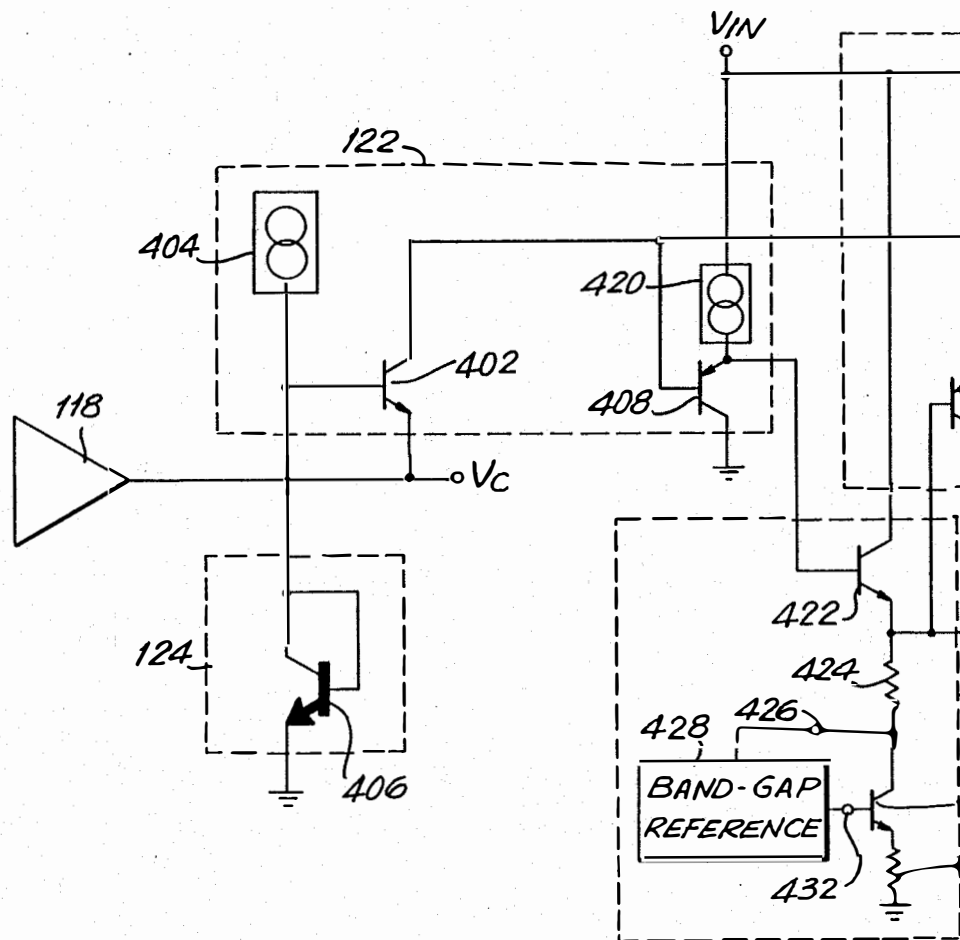


FIG. 1







Explore Litigation Insights

Docket Alarm provides insights to develop a more informed litigation strategy and the peace of mind of knowing you're on top of things.

Real-Time Litigation Alerts



Keep your litigation team up-to-date with **real-time alerts** and advanced team management tools built for the enterprise, all while greatly reducing PACER spend.

Our comprehensive service means we can handle Federal, State, and Administrative courts across the country.

Advanced Docket Research



With over 230 million records, Docket Alarm's cloud-native docket research platform finds what other services can't. Coverage includes Federal, State, plus PTAB, TTAB, ITC and NLRB decisions, all in one place.

Identify arguments that have been successful in the past with full text, pinpoint searching. Link to case law cited within any court document via Fastcase.

Analytics At Your Fingertips



Learn what happened the last time a particular judge, opposing counsel or company faced cases similar to yours.

Advanced out-of-the-box PTAB and TTAB analytics are always at your fingertips.

API

Docket Alarm offers a powerful API (application programming interface) to developers that want to integrate case filings into their apps.

LAW FIRMS

Build custom dashboards for your attorneys and clients with live data direct from the court.

Automate many repetitive legal tasks like conflict checks, document management, and marketing.

FINANCIAL INSTITUTIONS

Litigation and bankruptcy checks for companies and debtors.

E-DISCOVERY AND LEGAL VENDORS

Sync your system to PACER to automate legal marketing.