

OPEN FORUM

A paradigm shift in myelodysplastic syndromes

A Raza¹, S Mundle¹, V Shetty¹, S Alvi¹, H Chopra¹, L Span¹, A Parcharidou², S Dar¹, P Venugopal¹, R Borok³, S Gezer¹, J Showel¹, J Loew³, E Robin⁴, S Rifkin⁵, D Alston⁶, B Hernandez⁶, R Shah⁷, H Kaizer¹, S Gregory¹ and H Preisler¹

¹Rush Cancer Institute, Rush-Presbyterian-St Luke's Medical Center, Chicago, IL, USA; ²2nd Department of Internal Medicine, University of Athens, Hospital Evangelismos, Athens, Greece; ³Department of Pathology, Rush-Presbyterian-St Luke's Medical Center, Chicago, IL; ⁴Ingall's Memorial Hospital, Harvey, IL, ⁵Northwest Community Hospital, Arlington Heights, IL, ⁶LaPorte Cancer Treatment Center, LaPorte, IN, and ⁷Lake Forest Hospital, Deerfield, IL, USA

A poorly defined transforming event(s) affects the pluripotential bone marrow (BM) stem cell in myelodysplastic syndromes (MDS), conferring a growth advantage upon it which leads eventually to monoclonal hematopoiesis. The progeny of this transformed ancestor undergo recognizable albeit dysplastic maturation. We propose that this picture is further complicated by a variety of cytokines, tumor necrosis factor alpha (TNF- α), transforming growth factor beta (TGF- β) and interleukin 1 β (IL-1 β) which exert a dual effect on the diseased cells. The immature CD34⁺ cells are stimulated to proliferate, while their later differentiated daughters are induced to undergo apoptosis accounting for the clinical syndrome of pancytopenia despite hypercellular BMs. Studies directed at measuring the rates of proliferation and apoptosis as well as the levels of TNF- α , TGF- β and IL-1 β confirm this hypothesis and are presented in greater detail. A novel approach towards MDS therapy emerges as a result of this paradigm shift based upon the premise that anti-cytokine therapy would prevent excessive intramedullary apoptosis and result in improved cytopenias as well as cause a slowing down of the diseased precursor cell proliferation resulting in resumption of polyclonal hematopoiesis. Because a number of cytokines function through common lipid second messengers, interruption of this pathway should theoretically cause disruption in the signalling of a cascade of cytokines.
Keywords: myelodysplastic syndromes (MDS); tumor necrosis factor alpha (TNF- α); transforming growth factor beta (TGF- β); interleukin 1 β (IL-1 β); apoptosis

Introduction

The myelodysplastic syndromes (MDS) are indolent clonal disorders which predominate in the elderly and which clearly involve a diseased pluripotential hematopoietic stem cell since monoclonality of at least the non-lymphoid cells is the rule.¹⁻⁵ The clinical presentation poses an apparent paradox in that the majority of patients have variable cytopenias despite hypercellular marrows. Approximately 30% patients evolve into acute leukemia which is commonly of the myeloid variety, although lymphoid transformation has also been clearly, albeit rarely, demonstrated in these patients.⁶⁻¹⁰ Abnormalities of chromosomes 5 and 7 are rather common followed by those affecting chromosomes 8, 20 and 17.¹¹⁻¹⁴ The only treatment option for the majority of MDS patients continues to be supportive care since various therapeutic approaches ranging from the use of vitamins and growth factors to intensive chemotherapy have failed to benefit a substantial number of patients.¹⁵⁻¹⁷ Given this depressing clinical scenario, efforts have been focused at understanding the biology of MDS better

with the hope of developing objective and rational treatment approaches assigned to reverse the lesion(s). Our own studies combined with those of others over the last 10 years have allowed us to develop a new model for the pathogenesis of MDS which we believe constitutes a paradigm shift in these disorders. The purpose of this article is to summarize these studies and present the new paradigm.

MDS is a stem cell disease

Highly sophisticated biochemical and molecular studies have repeatedly demonstrated that the bone marrow in MDS patients is monoclonal.¹⁸⁻²³ This monoclonality should not be confused with the monoclonality of malignancy. For example, *de novo* standard risk primary acute myeloid leukemia (AML) is a monoclonal disease, but here the clonality refers to only the leukemic cells or blasts, while the residual hematopoietic cells are usually not clonal.²⁴ In MDS on the other hand, the BM consists of cells belonging to erythroid, myeloid and megakaryocytic lineages (as well as probably the B lymphocytes) at all stages of differentiation (albeit dysplastic) but all of which are the descendants of one single diseased parent stem cell. In other words, the transforming event in the stem cell conferred upon it a growth advantage so that the entire 'feeder' compartment of pluripotential cells was overwhelmed by the progeny of the transformed cell (see Figure 1). In this sense, MDS is closer to the chronic phase of chronic myeloid leukemia (CML) where the (normally) differentiated

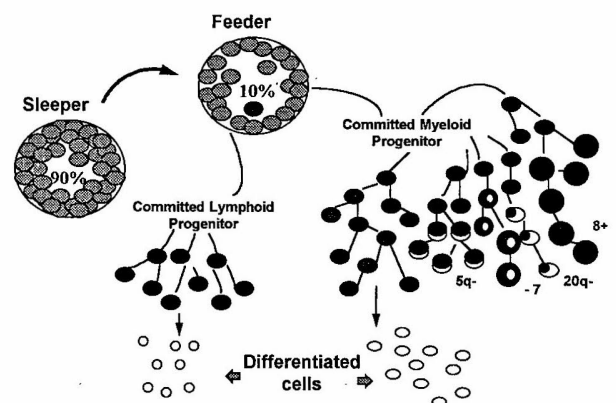


Figure 1 Killman's model of normal hematopoiesis has been utilized to describe the paradigm shift in myelodysplastic syndromes. Note that the 'initial event(s)' in MDS affects a stem cell in the 'feeder' compartment while commonly encountered cytogenetic abnormalities affecting chromosome 5, 7, 8 etc are later evolutionary events.

Correspondence: A Raza, Leukemia Program, Rush-Presbyterian-St Luke's Medical Center, 2242 West Harrison Street, Suite 108, Chicago, Illinois 60612, USA

Received 22 April 1996; accepted 17 June 1996

erythroid, myeloid and megakaryocytic cells are all marked by the pathognomonic Philadelphia (Ph⁺) chromosome.²⁵ In CML, the initial 'event' appears to be the Ph⁺ translocation since the BM resumes a polyclonal nature upon disappearance of this cytogenetic abnormality in response to interferon therapy.²⁵ In MDS on the other hand, cytogenetic abnormalities such as those affecting chromosomes 5 or 7 appear to be epiphenomena or secondary events since they often involve a proportion of cells in a marrow which is otherwise monoclonal.^{11,26} In MDS therefore, the first consequence of the transforming event is monoclonality and cytogenetic abnormalities represent disease evolution while in CML, the Ph⁺ translocation may be the 'transforming event' since there is no evidence of monoclonal hematopoiesis upon eradication of the Ph⁺ chromosome. The model of normal hematopoiesis proposed by Killman²⁷ is particularly relevant in this setting (Figure 1).

Nature of the transforming event is obscure and ambiguous in MDS

Since there are certain cytogenetic abnormalities which occur in MDS with a regular frequency, it is not unreasonable to look for genic abnormalities associated with the most commonly involved areas of the affected chromosomes. In MDS, the interstitial deletion involving 5q31.1 with its associated loss of the IRF-1 gene is one such abnormality.²⁶ The 5q31.1 deletion is present in 30% MDS patients and 50% AML patients who developed leukemia secondary to a preceding myelodysplasia.²⁸ Located at this site is the transcription enhancer/tumor suppressor IRF-1 gene²⁹ which can also be functionally inactive due to accelerated 'exon skipping' despite the presence of a normal gene.³⁰ It is also possible that exaggerated exon skipping in the allele containing the normal IRF-1 superimposed upon the deleted IRF-1 allele accounts for the evolution of MDS to AML. Conversely, over-expression of IRF-2 can suppress the effects of IRF-1.³¹ The problem with implicating the IRF-1 in the 'transforming event' is that this deletion was detected in only 20–80% of the hematopoietic cells in MDS patients correlating with the percentage of blasts²⁷ rather than the 100% of the cells expected on the basis of the monoclonal nature of the disease. In other words, a genetic abnormality which only affects a proportion of the MDS cells instead of all the monoclonal cells by definition cannot be a candidate for the transforming event.

Inappropriate expression of another gene, the esotropic virus integration site 1 gene (Evi-1) associated with retrovirally induced myeloid leukemias in mice³² has also been associated with AML and MDS in humans.³³ Aberrant expression of Evi-1 conferred a non-responsiveness in murine BM progenitor cells to the effects of erythropoietin, an observation particularly relevant to MDS since the erythroid cells appear to be universally most diseased in these disorders. Because abnormalities of Evi-1 are not found in all MDS patients, once again it is difficult to consider this gene as being somehow involved in the initial 'transforming event'. Other molecular lesions which have been described include mutations of *ras*,³⁴ *fms*,³⁵ *p53*³⁶ as well as deregulation of other as yet unidentified tumor suppressor genes.³⁷

In summary therefore, MDS are clearly stem cell disorders although the nature of the initial event is unknown. Given that these complex syndromes are highly heterogeneous in their clinical presentations, it is likely that the initial event(s) will parallel this heterogeneity being different from one group of

MDS patients to another, if not varying amongst individuals. Whatever the initial event is in MDS, its consequences are very well appreciated. The affected cell develops a growth advantage over its neighbors eventually leading to monoclonal hematopoiesis. Once the entire BM is descending from a single parent cell, the likelihood of additional mutations accumulating in one of its daughters is very great. Further, the evolved and additionally mutated cell will have a greater chance of survival and future proliferation in a monoclonal setting as compared to a polyclonal one because all the surrounding sister cells share in the same 'initial event' and thus are not very different from it. The expansion (and perhaps further mutations) of one such clone is probably responsible for the eventual evolution to acute leukemia. The key consequence of the stem cell defect in MDS then is monoclonality which predisposes these patients to frank malignancy. In fact, the definition of pre-leukemia should perhaps be rendered more objective by restricting the term to individuals in whom monoclonality (in the absence of a substantial number of blasts) can be documented.

What causes the clinical syndrome of MDS?

The apparent paradox of variable cytopenias in the presence of generally cellular marrows in these patients could be accounted for by increased proliferation of hematopoietic cells being cancelled by an equally increased rate of intramedullary apoptosis. Thus, despite frantic activity in the marrow compartment, the peripheral blood would remain devoid of functional hematopoietic cells. In fact, our own studies directed at measuring the *in vivo* rates of proliferation and programmed cell death have demonstrated the above hypothesis to be quite true. By infusing MDS patients with thymidine analogues iodo- and/or bromodeoxyuridine (IUdR, BrdU) as previously described,^{38,39} we found that the total cell cycle time (T_c) in 120 MDS patients was a median of 35 h while the labeling index (LI) was 26.1%. Figure 2 shows a double-labeled slide in an MDS patient where large numbers of cells can be seen synthesizing DNA. Thus, MDS are clearly actively proliferative disorders with no dearth of S-phase cells in their bone marrows. Unfortunately, the rapid proliferation is countered by rapid and excessive cell death.

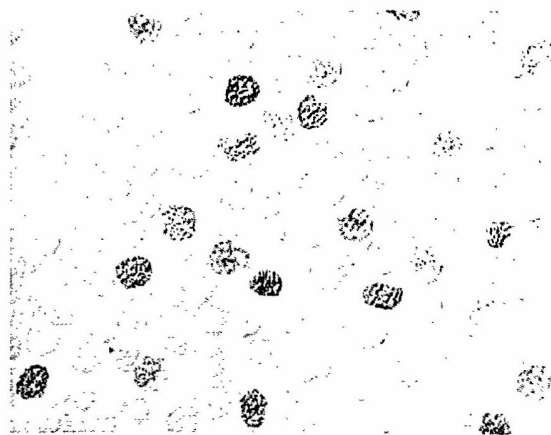


Figure 2 Double labeling for the two thymidine analogues iododeoxyuridine (IUdR) (brown) and bromodeoxyuridine (BrdU) (blue) depicting the cells synthesizing DNA in the bone marrow biopsy of an MDS patient. Original magnification $\times 400$.



OPEN FORUM

A paradigm shift in myelodysplastic syndromes

A Raza¹, S Mundle¹, V Shetty¹, S Alvi¹, H Chopra¹, L Span¹, A Parcharidou², S Dar¹, P Venugopal¹, R Borok³, S Gezer¹, J Showel¹, J Loew³, E Robin⁴, S Rifkin⁵, D Alston⁶, B Hernandez⁶, R Shah⁷, H Kaizer¹, S Gregory¹ and H Preisler¹

¹Rush Cancer Institute, Rush-Presbyterian-St Luke's Medical Center, Chicago, IL, USA; ²2nd Department of Internal Medicine, University of Athens, Hospital Evangelismos, Athens, Greece; ³Department of Pathology, Rush-Presbyterian-St Luke's Medical Center, Chicago, IL; ⁴Ingall's Memorial Hospital, Harvey, IL; ⁵Northwest Community Hospital, Arlington Heights, IL; ⁶LaPorte Cancer Treatment Center, LaPorte, IN, and ⁷Lake Forest Hospital, Deerfield, IL, USA

A poorly defined transforming event(s) affects the pluripotential bone marrow (BM) stem cell in myelodysplastic syndromes (MDS), conferring a growth advantage upon it which leads eventually to monoclonal hematopoiesis. The progeny of this transformed ancestor undergo recognizable albeit dysplastic maturation. We propose that this picture is further complicated by a variety of cytokines, tumor necrosis factor alpha (TNF- α), transforming growth factor beta (TGF- β) and interleukin 1 β (IL-1 β) which exert a dual effect on the diseased cells. The immature CD34⁺ cells are stimulated to proliferate, while their later differentiated daughters are induced to undergo apoptosis accounting for the clinical syndrome of pancytopenia despite hypercellular BMs. Studies directed at measuring the rates of proliferation and apoptosis as well as the levels of TNF- α , TGF- β and IL-1 β confirm this hypothesis and are presented in greater detail. A novel approach towards MDS therapy emerges as a result of this paradigm shift based upon the premise that anti-cytokine therapy would prevent excessive intramedullary apoptosis and result in improved cytopenias as well as cause a slowing down of the diseased precursor cell proliferation resulting in resumption of polyclonal hematopoiesis. Because a number of cytokines function through common lipid second messengers, interruption of this pathway should theoretically cause disruption in the signalling of a cascade of cytokines.

Keywords: myelodysplastic syndromes (MDS); tumor necrosis factor alpha (TNF- α); transforming growth factor beta (TGF- β); interleukin 1 β (IL-1 β); apoptosis

Introduction

The myelodysplastic syndromes (MDS) are indolent clonal disorders which predominate in the elderly and which clearly involve a diseased pluripotential hematopoietic stem cell since monoclonality of at least the non-lymphoid cells is the rule.¹⁻⁵ The clinical presentation poses an apparent paradox in that the majority of patients have variable cytopenias despite hypercellular marrows. Approximately 30% patients evolve into acute leukemia which is commonly of the myeloid variety, although lymphoid transformation has also been clearly, albeit rarely, demonstrated in these patients.⁶⁻¹⁰ Abnormalities of chromosomes 5 and 7 are rather common followed by those affecting chromosomes 8, 20 and 17.¹¹⁻¹⁴ The only treatment option for the majority of MDS patients continues to be supportive care since various therapeutic approaches ranging from the use of vitamins and growth factors to intensive chemotherapy have failed to benefit a substantial number of patients.¹⁵⁻¹⁷ Given this depressing clinical scenario, efforts have been focused at understanding the biology of MDS better

with the hope of developing objective and rational treatment approaches assigned to reverse the lesion(s). Our own studies combined with those of others over the last 10 years have allowed us to develop a new model for the pathogenesis of MDS which we believe constitutes a paradigm shift in these disorders. The purpose of this article is to summarize these studies and present the new paradigm.

MDS is a stem cell disease

Highly sophisticated biochemical and molecular studies have repeatedly demonstrated that the bone marrow in MDS patients is monoclonal.¹⁸⁻²³ This monoclonality should not be confused with the monoclonality of malignancy. For example, *de novo* standard risk primary acute myeloid leukemia (AML) is a monoclonal disease, but here the clonality refers to only the leukemic cells or blasts, while the residual hematopoietic cells are usually not clonal.²⁴ In MDS on the other hand, the BM consists of cells belonging to erythroid, myeloid and megakaryocytic lineages (as well as probably the B lymphocytes) at all stages of differentiation (albeit dysplastic) but all of which are the descendants of one single diseased parent stem cell. In other words, the transforming event in the stem cell conferred upon it a growth advantage so that the entire 'feeder' compartment of pluripotential cells was overwhelmed by the progeny of the transformed cell (see Figure 1). In this sense, MDS is closer to the chronic phase of chronic myeloid leukemia (CML) where the (normally) differentiated

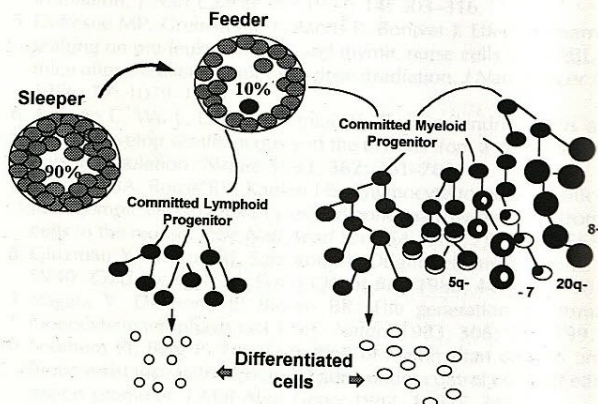


Figure 1 Killman's model of normal hematopoiesis has been utilized to describe the paradigm shift in myelodysplastic syndromes. Note that the 'initial event(s)' in MDS affects a stem cell in the 'feeder' compartment while commonly encountered cytogenetic abnormalities affecting chromosome 5, 7, 8 etc are later evolutionary events.

Correspondence: A Raza, Leukemia Program, Rush-Presbyterian-St Luke's Medical Center, 2242 West Harrison Street, Suite 108, Chicago, Illinois 60612, USA

Received 22 April 1996; accepted 17 June 1996

erythroid, myeloid and megakaryocytic cells are all marked by the pathognomonic Philadelphia (Ph') chromosome.²⁵ In CML, the initial 'event' appears to be the Ph' translocation since the BM resumes a polyclonal nature upon disappearance of this cytogenetic abnormality in response to interferon therapy.²⁵ In MDS on the other hand, cytogenetic abnormalities such as those affecting chromosomes 5 or 7 appear to be epiphenomena or secondary events since they often involve a proportion of cells in a marrow which is otherwise monoclonal.^{11,26} In MDS therefore, the first consequence of the transforming event is monoclonality and cytogenetic abnormalities represent disease evolution while in CML, the Ph' translocation may be the 'transforming event' since there is no evidence of monoclonal hematopoiesis upon eradication of the Ph' chromosome. The model of normal hematopoiesis proposed by Killman²⁷ is particularly relevant in this setting (Figure 1).

Nature of the transforming event is obscure and ambiguous in MDS

Since there are certain cytogenetic abnormalities which occur in MDS with a regular frequency, it is not unreasonable to look for genetic abnormalities associated with the most commonly involved areas of the affected chromosomes. In MDS, the interstitial deletion involving 5q31.1 with its associated loss of the IRF-1 gene is one such abnormality.²⁶ The 5q31.1 deletion is present in 30% MDS patients and 50% AML patients who developed leukemia secondary to a preceding myelodysplasia.²⁸ Located at this site is the transcription enhancer/tumor suppressor IRF-1 gene²⁹ which can also be functionally inactive due to accelerated 'exon skipping' despite the presence of a normal gene.³⁰ It is also possible that exaggerated exon skipping in the allele containing the normal IRF-1 superimposed upon the deleted IRF-1 allele accounts for the evolution of MDS to AML. Conversely, over-expression of IRF-2 can suppress the effects of IRF-1.³¹ The problem with implicating the IRF-1 in the 'transforming event' is that this deletion was detected in only 20–80% of the hematopoietic cells in MDS patients correlating with the percentage of blasts²⁷ rather than the 100% of the cells expected on the basis of the monoclonal nature of the disease. In other words, a genetic abnormality which only affects a proportion of the MDS cells instead of all the monoclonal cells by definition cannot be a candidate for the transforming event.

Inappropriate expression of another gene, the esotropic virus integration site 1 gene (Evi-1) associated with retrovirally induced myeloid leukemias in mice³² has also been associated with AML and MDS in humans.³³ Aberrant expression of Evi-1 conferred a non-responsiveness in murine BM progenitor cells to the effects of erythropoietin, an observation particularly relevant to MDS since the erythroid cells appear to be universally most diseased in these disorders. Because abnormalities of Evi-1 are not found in all MDS patients, once again it is difficult to consider this gene as being somehow involved in the initial 'transforming event'. Other molecular lesions which have been described include mutations of *ras*,³⁴ *fms*,³⁵ *p53*³⁶ as well as deregulation of other as yet unidentified tumor suppressor genes.³⁷

In summary therefore, MDS are clearly stem cell disorders although the nature of the initial event is unknown. Given that these complex syndromes are highly heterogeneous in their clinical presentations, it is likely that the initial event(s) will parallel this heterogeneity being different from one group of

MDS patients to another, if not varying amongst individuals. Whatever the initial event is in MDS, its consequences are very well appreciated. The affected cell develops a growth advantage over its neighbors eventually leading to monoclonal hematopoiesis. Once the entire BM is descending from a single parent cell, the likelihood of additional mutations accumulating in one of its daughters is very great. Further, the evolved and additionally mutated cell will have a greater chance of survival and future proliferation in a monoclonal setting as compared to a polyclonal one because all the surrounding sister cells share in the same 'initial event' and thus are not very different from it. The expansion (and perhaps further mutations) of one such clone is probably responsible for the eventual evolution to acute leukemia. The key consequence of the stem cell defect in MDS then is monoclonality which predisposes these patients to frank malignancy. In fact, the definition of pre-leukemia should perhaps be rendered more objective by restricting the term to individuals in whom monoclonality (in the absence of a substantial number of blasts) can be documented.

What causes the clinical syndrome of MDS?

The apparent paradox of variable cytopenias in the presence of generally cellular marrows in these patients could be accounted for by increased proliferation of hematopoietic cells being cancelled by an equally increased rate of intramedullary apoptosis. Thus, despite frantic activity in the marrow compartment, the peripheral blood would remain devoid of functional hematopoietic cells. In fact, our own studies directed at measuring the *in vivo* rates of proliferation and programmed cell death have demonstrated the above hypothesis to be quite true. By infusing MDS patients with thymidine analogues iodo- and/or bromodeoxyuridine (IUdR, BrdU) as previously described,^{38,39} we found that the total cell cycle time (Tc) in 120 MDS patients was a median of 35 h while the labeling index (LI) was 26.1%. Figure 2 shows a double-labeled slide in an MDS patient where large numbers of cells can be seen synthesizing DNA. Thus, MDS are clearly actively proliferative disorders with no dearth of S-phase cells in their bone marrows. Unfortunately, the rapid proliferation is countered by rapid and excessive cell death.

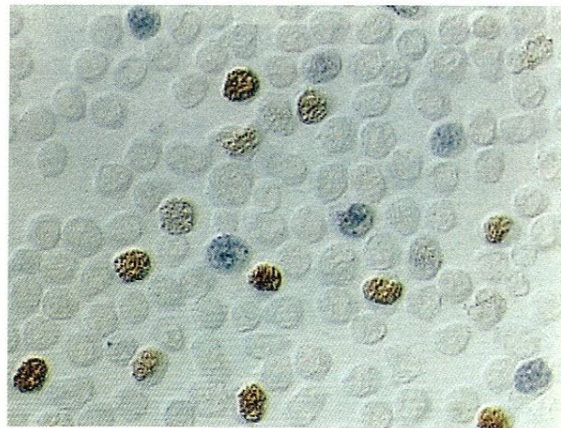


Figure 2 Double labeling for the two thymidine analogues iodo-deoxyuridine (IUdR) (brown) and bromodeoxyuridine (BrdU) (blue) depicting the cells synthesizing DNA in the bone marrow biopsy of an MDS patient. Original magnification $\times 400$.

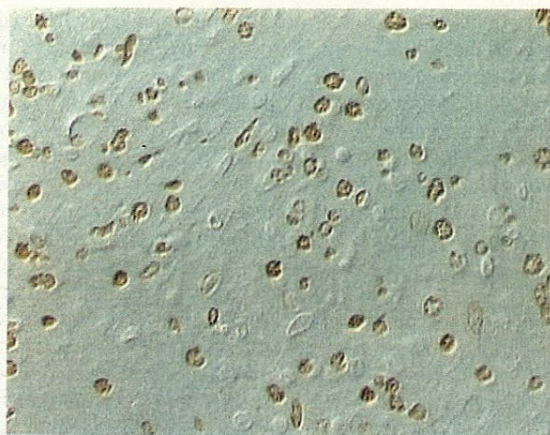


Figure 3 *In situ* end labeling (ISEL) of fragmented DNA in MDS bone marrow biopsy showing high percentage of cells undergoing apoptosis. Original magnification $\times 400$.

Apoptosis in the BM biopsies of MDS patients was measured using the technique of *in situ* end labeling (ISEL) of fragmented DNA⁴⁰⁻⁴⁴ and found to be very high as compared to normal or AML marrows.^{43,44} Among 102 MDS patients studied by ISEL, approximately half showed 30-50% cells undergoing apoptosis in their biopsies. Figure 3 shows a typical MDS BM biopsy. Double-labeling for proliferation (IUdR/BrdU) and apoptosis (ISEL) simultaneously showed large numbers of S-phase cells to be apoptotic (Figure 4) raising the question of 'antonymous' death in MDS.⁴⁵ Thus, while the BM in MDS patients is packed with proliferating cells, they are also in the process of concomitantly committing suicide. This may account for the paradox of pancytopenia despite hypercellularity of the marrow.

Could dual-acting cytokines be responsible for the excessive cell-birth and cell-death in MDS bone marrows?

A variety of cytokines such as tumor necrosis factor alpha (TNF- α), transforming growth factor beta (TGF- β) and interleukin 1 beta (IL-1 β) along with IL-1 β converting enzyme (ICE) can have dual effects of stimulating proliferation and inducing

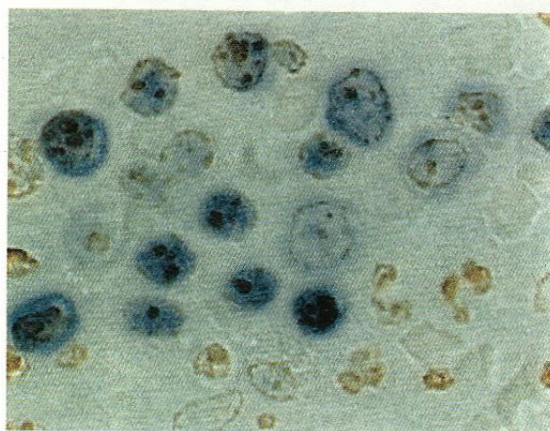


Figure 4 Simultaneous presence of cell birth (brown) and cell death (blue) demonstrating the phenomena of antonymy in MDS bone marrow biopsy. Original magnification $\times 1000$.

apoptosis in hematopoietic cells.⁴⁶⁻⁴⁸ It is conceivable that one or more of these cytokines are causing the stimulation of early CD34⁺ progenitor cells in the BM while inducing apoptosis in their maturing progeny. Indeed, we have demonstrated higher than expected levels of all three cytokines in MDS patients.⁴⁹ What is the source of these cytokines? Either they are being produced by the transformed cells themselves as a mode of autostimulation or they are being secreted by the 'normal' monocytes/macrophages in the body's attempt to contain the expanding monoclonal population of transformed cells. Whatever the source, their effect is detrimental at two levels since they end up stimulating the offending premature CD34⁺ blasts while destroying the maturing CD34⁻ cells.

A paradigm shift

Figure 5 presents the new paradigm. A poorly defined initial event(s) leads to unrestrained growth of the abnormal cell eventually overwhelming the entire BM as demonstrated by studies of 'monoclonality'. Presence of cytokines whose source also remains unexplained at the moment, confounds the picture further by stimulating the early precursors and destroying the later forms most likely accounting for the clinical syndrome of pancytopenia and hypercellular bone marrows. The commonly encountered cytogenetic abnormalities probably represent later evolutionary events since these are not usually present in every BM cell. When MDS patients evolve to AML, there are distinct additional events, ie loss of differentiation in the leukemic clone and therefore loss of apoptosis. Implicit in the above is of course the loss of cytokine-induced effects and therefore an assumption of more autonomous growth by the leukemic clone. Treatment outcome of such secondary AML patients is distinctly inferior to primary AML probably because the cell involved is decidedly more primitive in the former (belonging to the 'feeder' pool) as compared with the latter (belonging to the 'committed' myeloid progenitor).

Novel therapies resulting from the new paradigm

By the time MDS patients present to their physicians with the full-blown clinical syndrome, several additional abnormalities have probably already followed the initial transforming event. Attempts to reverse each of the genic events may be some

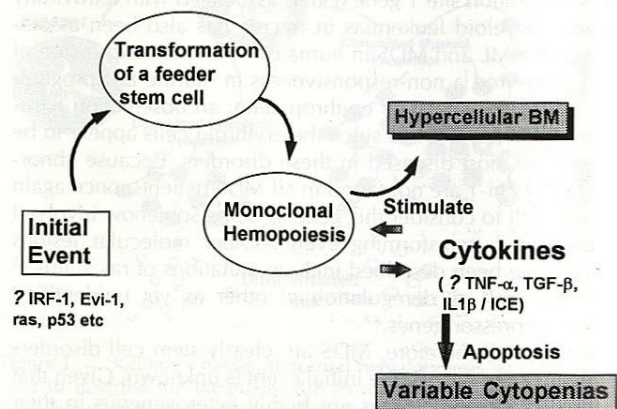


Figure 5 The new paradigm for MDS.

way in the future. The clinical symptoms however may be a result of the confounding actions of cytokines and therefore one could attempt to neutralize some of these effects with the expectation of clinical benefit. In the past, this approach of biotherapy in MDS has been restricted to the use of 'viability factors' such as interleukin-3 (IL-3), granulocyte colony-stimulating factor (G-CSF) or granulocyte-macrophage CSF (GM-CSF) and erythropoietin or their combinations. These trials have resulted in selective and variable benefits in a number of MDS patients.⁵⁰⁻⁵² Unfortunately, the responses have been mostly transient and often the side-effects preclude prolonged trials.⁵⁰⁻⁵² Chemotherapeutic trials have been equally toxic and unimpressive and could only be attempted in patients with excess blasts.¹⁵ Combinations of growth factors and chemotherapy have been tried with similar results.⁵³ Obviously, these approaches may be refined further in the future when newer agents such as thrombopoietin and chemotherapies such as topotecan are introduced into clinical trials in MDS patients. We propose a novel approach to MDS therapy based on the new paradigm. Why not try anticytokine therapy which would neutralize the noxious cytokines thereby producing a dual effect of ameliorating cytopenias (by suppressing apoptosis) and decrease the proliferation of the transformed clone leading to resumption of polyclonality? What are the candidate agents in this area?

First, a cascade of cytokines including TNF- α , TGF- β and IL-1 β act via the phosphatidic acid (PA) \rightarrow diacylglycerol (DAG) lipid signalling pathway.⁵⁴⁻⁵⁹ Interruption of this second messenger system by drugs such as pentoxifylline⁵⁷ and ciprofloxacin⁵⁸ or lisophylline⁵⁹ could be tried. Second, specific inhibition of individual cytokines could be attempted by use of soluble TNF- α receptor or IL-1 β receptor antagonists given to patients *in vivo*. Finally, a combined 'multi-modality' approach using viability factors and chemotherapy alternating with the anticytokine approach may be a far more valuable strategy than using any one of the above alone. The idea is that a whole new area of clinical trials has been opened up by the construction of this new paradigm. Further therapeutic advances will occur only if we do not throw the baby out with the bath water and make sure that parallel detailed biological studies are conducted with the trial of every new agent(s) in order to define the reasons for response and non-response.

Acknowledgements

The authors would like to thank Ms Sandra Howery and Ms Lakshmi Venugopal for expert secretarial and administrative assistance. This work was supported by NCI grants CA60085 and CA60086.

References

- 1 Bennett JM, Catovsky D, Flandrin DMT, Galton GDAG, Gralnick HR, Sultan C. Proposal for the classification of the myelodysplastic syndromes. *Br J Haematol* 1982; **51**: 189-199.
- 2 Resegotti L. The nature and natural history of myelodysplasia. *Haematologica* 1993; **5**: 191-204.
- 3 Verhoef GEG, Pittaluga S, Wolf-Peters CDe, Boogaerts MA. FAB classification of myelodysplastic syndromes: merits and controversies. *Ann Hematol* 1995; **71**: 3-11.
- 4 Weimar IS, Bourhis J-H, Gast GCD, Gerristen WR. Clonality in myelodysplastic syndromes. *Leuk Lymphoma* 1993; **13**: 215-221.
- 5 Raskind WH, Tirumali N, Jacobson R, Singer J, Fialkow PJ. Evidence for a multistep pathogenesis of a myelodysplastic syndrome. *Blood* 1984; **63**: 1318-1323.

- 6 Preisler HD, Early A, Raza A, Vlahides G, Marinello MJ, Browman G, Vlahides G, Marinello MJ, Stein AM. Therapy of secondary acute non-lymphocytic leukemia with cytarabine. *New Engl J Med* 1983; **308**: 21-23.
- 7 Raza A, Preisler HD, Li YQ, Larson R, Goldberg J, Browman G, Bennett J, Grunwald H, Vogler R, Kukla C. Biological characteristics of newly diagnosed poor prognosis acute myelogenous leukemia. *Am J Hematol* 1993; **42**: 359-366.
- 8 Barton JC, Conrad ME, Parmley RT. Acute lymphoblastic leukemia in idiopathic refractory sideroblastic anemia: evidence for a common lymphoid and myeloid progenitor cell. *Am J Hematol* 1980; **9**: 109-115.
- 9 Nagler A, Brenner B, Tatarsky I. Secondary refractory anemia with excess of blasts in transformation terminating as acute lymphoblastic leukemia. *Acta Hematol* 1986; **76**: 164-165.
- 10 Bonati A, Delia D, Staricich R. Progression of a myelodysplastic syndrome to pre-B acute lymphoblastic leukemia with unusual phenotype. *Br J Haematol* 1986; **64**: 487-491.
- 11 Dewald GW, Davis MP, Pierre RV, O'Fallon JR, Hoagland HC. Clinical characteristics and prognosis of 50 patients with a myeloproliferative syndrome and deletion of part of the long arm of chromosome 5. *Blood* 1985; **66**: 189-197.
- 12 Heim S. Cytogenetic findings in primary and secondary MDS. *Leukemia Res* 1992; **16**: 43-46.
- 13 Michalova K, Musilova J, Zemanova Z, Czechoslovak MDS Cooperative Group. Consecutive chromosomal studies in patients with myelodysplastic syndrome. *Ann Genet* 1991; **34**: 212-218.
- 14 Wattel E, Lai JL, Hebbar M, Preudhomme C, Grahek D, Morel P, Bauters F, Fenaux P. *De novo* myelodysplastic syndrome (MDS) with deletion of the long arm of chromosome 20: a subtype of MDS with distinct hematological and prognostic features? *Leukemia Res* 1993; **17**: 921-926.
- 15 Estey EH, Kantarjian HM, Keating M. Idarubicin plus continuous infusion high-dose cytarabine as treatment for patients with acute myelogenous leukemia or myelodysplastic syndrome. *Semin Oncol* 1993; **20**: 1-5.
- 16 Kizaki M, Koeffler HP. Differentiation-inducing agents in the treatment of myelodysplastic syndromes. *Semin Oncol* 1992; **19**: 95-105.
- 17 Greenberg PL. Treatment of myelodysplastic syndromes with hemopoietic growth factors. *Semin Oncol* 1992; **19**: 106-114.
- 18 Tefferi A, Thibodeau SN, Solberg LA Jr. Clonal studies in the myelodysplastic syndrome using X-linked restriction fragment length polymorphisms. *Blood* 1990; **75**: 1770-1773.
- 19 Abrahamson G, Boulwood J, Madden J, Kelly S, Oscier DG, Rack K, Buckle VJ, Wainscoat JS. Clonality of cell populations in refractory anemia using combined approach of gene loss and X-linked restriction fragment length polymorphism-methylation analyses. *Br J Haematol* 1991; **79**: 550-555.
- 20 Okada M, Okamoto T, Kanamaru A, Kaishita E. Clonal analysis in MDS (refractory anemia) by FISH and X-chromosome inactivation pattern using PCR. *Proc Am Soc Hematol* 1995; **86**: 799a (Abstr. 3183).
- 21 Delforge M, Duppen VV, Demuyneck H, Verhoef GEG, Vandenberghe P, Zachee P, Boogaerts MA. Clonality study of hematopoietic marrow progenitors and mature blood cells in female patients with myelodysplastic syndromes. *Proc Am Soc Hematol* 1995; **86**: 335a (Abstr. 1328).
- 22 Prchal JT, Throckmorton DW, Carroll III AJ, Fuson EW, Gams RA, Prchal JF. A common progenitor for human myeloid and lymphoid cells. *Nature* 1978; **274**: 590-591.
- 23 Janssen JWG, Buschle M, Layton M, Drexler HG, Lyons J, van den Berghe H, Heimpel H, Kubanek B, Kleihauer E, Mufti GJ, Bartram CR. Clonal analysis of myelodysplastic syndromes: evidence of multipotent stem cell origin. *Blood* 1989; **73**: 248-254.
- 24 Gale RE, Wheadon H, Goldstone AH, Burnett AK, Linch DC. Frequency of clonal remission in acute myeloid leukaemia. *Lancet* 1993; **341**: 138-142.
- 25 Claxton D, Deisseroth A, Talpaz M, Reading C, Kantarjian H, Trujillo J, Stass S, Gooch G, Spitzer G. Polyclonal hematopoiesis in interferon-induced cytogenetic remissions of chronic myelogenous leukemia. *Blood* 1992; **79**: 997-1002.
- 26 Willman CL, Sever CE, Pallavicini MG, Harada H, Tanaka N, Slovak ML, Yamamoto H, Harada K, Meeker TC, List AF, Taniguchi T. Deletion of IRF-1 mapping to chromosome 5q31.1 in human

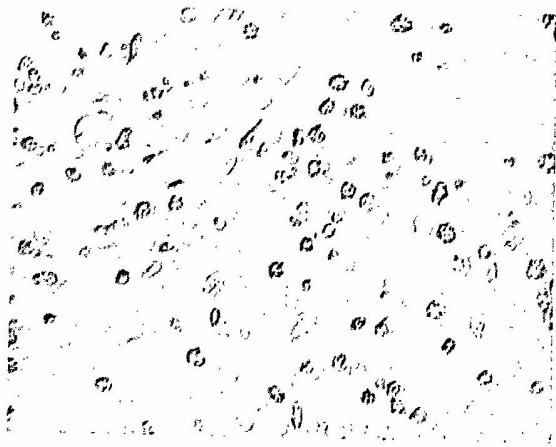


Figure 3 *In situ* end labeling (ISEL) of fragmented DNA in MDS bone marrow biopsy showing high percentage of cells undergoing apoptosis. Original magnification $\times 400$.

Apoptosis in the BM biopsies of MDS patients was measured using the technique of *in situ* end labeling (ISEL) of fragmented DNA⁴⁰⁻⁴⁴ and found to be very high as compared to normal or AML marrows.^{43,44} Among 102 MDS patients studied by ISEL, approximately half showed 30-50% cells undergoing apoptosis in their biopsies. Figure 3 shows a typical MDS BM biopsy. Double-labeling for proliferation (IUdR/BrdU) and apoptosis (ISEL) simultaneously showed large numbers of S-phase cells to be apoptotic (Figure 4) raising the question of 'antonymous' death in MDS.⁴⁵ Thus, while the BM in MDS patients is packed with proliferating cells, they are also in the process of concomitantly committing suicide. This may account for the paradox of pancytopenia despite hypercellularity of the marrow.

Could dual-acting cytokines be responsible for the excessive cell-birth and cell-death in MDS bone marrows?

A variety of cytokines such as tumor necrosis factor alpha (TNF- α), transforming growth factor beta (TGF- β) and interleukin 1 beta (IL-1 β) along with IL-1 β converting enzyme (ICE) can have dual effects of stimulating proliferation and inducing

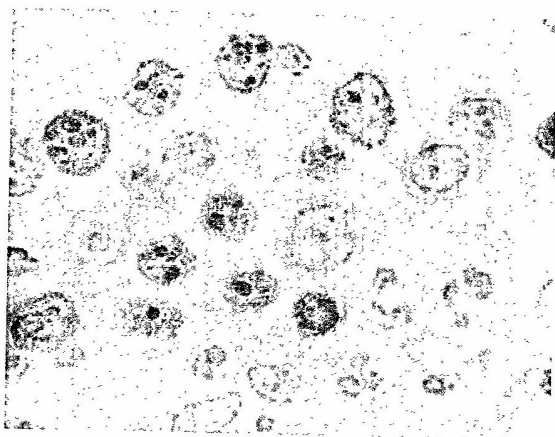


Figure 4 Simultaneous presence of cell birth (brown) and cell death (blue) demonstrating the phenomena of antonymy in MDS bone marrow biopsy. Original magnification $\times 1000$.

apoptosis in hematopoietic cells.⁴⁶⁻⁴⁸ It is conceivable that one or more of these cytokines are causing the stimulation of early CD34⁺ progenitor cells in the BM while inducing apoptosis in their maturing progeny. Indeed, we have demonstrated higher than expected levels of all three cytokines in MDS patients.⁴⁹ What is the source of these cytokines? Either they are being produced by the transformed cells themselves as a mode of autostimulation or they are being secreted by the 'normal' monocytes/macrophages in the body's attempt to contain the expanding monoclonal population of transformed cells. Whatever the source, their effect is detrimental at two levels since they end up stimulating the offending premature CD34⁺ blasts while destroying the maturing CD34⁻ cells.

A paradigm shift

Figure 5 presents the new paradigm. A poorly defined initial event(s) leads to unrestrained growth of the abnormal cell eventually overwhelming the entire BM as demonstrated by studies of 'monoclonality'. Presence of cytokines whose source also remains unexplained at the moment, confounds the picture further by stimulating the early precursors and destroying the later forms most likely accounting for the clinical syndrome of pancytopenia and hypercellular bone marrows. The commonly encountered cytogenetic abnormalities probably represent later evolutionary events since these are not usually present in every BM cell. When MDS patients evolve to AML, there are distinct additional events, ie loss of differentiation in the leukemic clone and therefore loss of apoptosis. Implicit in the above is of course the loss of cytokine-induced effects and therefore an assumption of more autonomous growth by the leukemic clone. Treatment outcome of such secondary AML patients is distinctly inferior to primary AML probably because the cell involved is decidedly more primitive in the former (belonging to the 'feeder' pool) as compared with the latter (belonging to the 'committed' myeloid progenitor).

Novel therapies resulting from the new paradigm

By the time MDS patients present to their physicians with the full-blown clinical syndrome, several additional abnormalities have probably already followed the initial transforming event. Attempts to reverse each of the genic events may be some

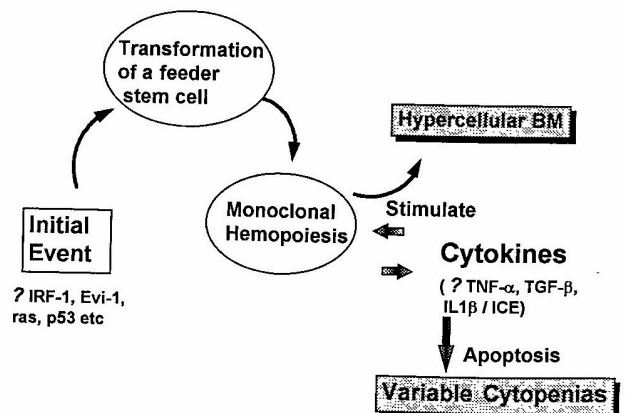


Figure 5 The new paradigm for MDS.

way in the future. The clinical symptoms however may be a result of the confounding actions of cytokines and therefore one could attempt to neutralize some of these effects with the expectation of clinical benefit. In the past, this approach of biotherapy in MDS has been restricted to the use of 'viability factors' such as interleukin-3 (IL-3), granulocyte colony-stimulating factor (G-CSF) or granulocyte-macrophage CSF (GM-CSF) and erythropoietin or their combinations. These trials have resulted in selective and variable benefits in a number of MDS patients.⁵⁰⁻⁵² Unfortunately, the responses have been mostly transient and often the side-effects preclude prolonged trials.⁵⁰⁻⁵² Chemotherapeutic trials have been equally toxic and unimpressive and could only be attempted in patients with excess blasts.¹⁵ Combinations of growth factors and chemotherapy have been tried with similar results.⁵³ Obviously, these approaches may be refined further in the future when newer agents such as thrombopoietin and chemotherapies such as topotecan are introduced into clinical trials in MDS patients. We propose a novel approach to MDS therapy based on the new paradigm. Why not try anticytokine therapy which would neutralize the noxious cytokines thereby producing a dual effect of ameliorating cytopenias (by suppressing apoptosis) and decrease the proliferation of the transformed clone leading to resumption of polyclonality? What are the candidate agents in this area?

First, a cascade of cytokines including TNF- α , TGF- β and IL-1 β act via the phosphatidic acid (PA) \rightarrow diacylglycerol (DAG) lipid signalling pathway.⁵⁴⁻⁵⁹ Interruption of this second messenger system by drugs such as pentoxifylline⁵⁷ and ciprofloxacin⁵⁸ or lisophylline⁵⁹ could be tried. Second, specific inhibition of individual cytokines could be attempted by use of soluble TNF- α receptor or IL-1 β receptor antagonists given to patients *in vivo*. Finally, a combined 'multi-modality' approach using viability factors and chemotherapy alternating with the anticytokine approach may be a far more valuable strategy than using any one of the above alone. The idea is that a whole new area of clinical trials has been opened up by the construction of this new paradigm. Further therapeutic advances will occur only if we do not throw the baby out with the bath water and make sure that parallel detailed biological studies are conducted with the trial of every new agent(s) in order to define the reasons for response and non-response.

Acknowledgements

The authors would like to thank Ms Sandra Howery and Ms Lakshmi Venugopal for expert secretarial and administrative assistance. This work was supported by NCI grants CA60085 and CA60086.

References

- Bennett JM, Catovsky D, Flandrin DMT, Galton GDAG, Gralnick HR, Sultan C. Proposal for the classification of the myelodysplastic syndromes. *Br J Haematol* 1982; **51**: 189-199.
- Resegotti L. The nature and natural history of myelodysplasia. *Haematologica* 1993; **5**: 191-204.
- Verhoef GEG, Pittaluga S, Wolf-Peeters CDe, Boogaerts MA. FAB classification of myelodysplastic syndromes: merits and controversies. *Ann Hematol* 1995; **71**: 3-11.
- Weimar IS, Bourhis J-H, Gast GCD, Gerristen WR. Clonality in myelodysplastic syndromes. *Leuk Lymphoma* 1993; **13**: 215-221.
- Raskind WH, Tirumali N, Jacobson R, Singer J, Fialkow PJ. Evidence for a multistep pathogenesis of a myelodysplastic syndrome. *Blood* 1984; **63**: 1318-1323.

- Preisler HD, Early A, Raza A, Vlahides G, Marinello MJ, Browman G, Vlahides G, Marinello MJ, Stein AM. Therapy of secondary acute non-lymphocytic leukemia with cytarabine. *New Engl J Med* 1983; **308**: 21-23.
- Raza A, Preisler HD, Li YQ, Larson R, Goldberg J, Browman G, Bennett J, Grunwald H, Vogler R, Kukla C. Biological characteristics of newly diagnosed poor prognosis acute myelogenous leukemia. *Am J Hematol* 1993; **42**: 359-366.
- Barton JC, Conrad ME, Parmley RT. Acute lymphoblastic leukemia in idiopathic refractory sideroblastic anemia: evidence for a common lymphoid and myeloid progenitor cell. *Am J Hematol* 1980; **9**: 109-115.
- Nagler A, Brenner B, Tatarsky I. Secondary refractory anemia with excess of blasts in transformation terminating as acute lymphoblastic leukemia. *Acta Hematol* 1986; **76**: 164-165.
- Bonati A, Delia D, Starcich R. Progression of a myelodysplastic syndrome to pre-B acute lymphoblastic leukemia with unusual phenotype. *Br J Haematol* 1986; **64**: 487-491.
- Dewald GW, Davis MP, Pierre RV, O'Fallon JR, Hoagland HC. Clinical characteristics and prognosis of 50 patients with a myeloproliferative syndrome and deletion of part of the long arm of chromosome 5. *Blood* 1985; **66**: 189-197.
- Heim S. Cytogenetic findings in primary and secondary MDS. *Leukemia Res* 1992; **16**: 43-46.
- Michalova K, Musilova J, Zemanova Z, Czechoslovak MDS Cooperative Group. Consecutive chromosomal studies in patients with myelodysplastic syndrome. *Ann Genet* 1991; **34**: 212-218.
- Wattel E, Lai JL, Hebban M, Preudhomme C, Grahek D, Morel P, Batters F, Fenaux P. *De novo* myelodysplastic syndrome (MDS) with deletion of the long arm of chromosome 20: a subtype of MDS with distinct hematological and prognostic features? *Leukemia Res* 1993; **17**: 921-926.
- Estey EH, Kantarjian HM, Keating M. Idarubicin plus continuous infusion high-dose cytarabine as treatment for patients with acute myelogenous leukemia or myelodysplastic syndrome. *Semin Oncol* 1993; **20**: 1-5.
- Kizaki M, Koeffler HP. Differentiation-inducing agents in the treatment of myelodysplastic syndromes. *Semin Oncol* 1992; **19**: 95-105.
- Greenberg PL. Treatment of myelodysplastic syndromes with hemopoietic growth factors. *Semin Oncol* 1992; **19**: 106-114.
- Tefferi A, Thibodeau SN, Solberg LA Jr. Clonal studies in the myelodysplastic syndrome using X-linked restriction fragment length polymorphisms. *Blood* 1990; **75**: 1770-1773.
- Abrahamson G, Boulwood J, Madden J, Kelly S, Oscier DG, Rack K, Buckle VJ, Wainscoat JS. Clonality of cell populations in refractory anemia using combined approach of gene loss and X-linked restriction fragment length polymorphism-methylation analyses. *Br J Haematol* 1991; **79**: 550-555.
- Okada M, Okamoto T, Kanamaru A, Kaishita E. Clonal analysis in MDS (refractory anemia) by FISH and X-chromosome inactivation pattern using PCR. *Proc Am Soc Hematol* 1995; **86**: 799a (Abstr. 3183).
- Delforge M, Duppen VV, Demuyne H, Verhoef GEG, Vandenberghe P, Zachee P, Boogaerts MA. Clonality study of hematopoietic marrow progenitors and mature blood cells in female patients with myelodysplastic syndromes. *Proc Am Soc Hematol* 1995; **86**: 335a (Abstr. 1328).
- Prchal JT, Throckmorton DW, Carroll III AJ, Fuson EW, Gams RA, Prchal JF. A common progenitor for human myeloid and lymphoid cells. *Nature* 1978; **274**: 590-591.
- Janssen JWG, Buschle M, Layton M, Drexler HG, Lyons J, van den Berghe H, Heimpel H, Kubanek B, Kleihauer E, Mufti GJ, Bartram CR. Clonal analysis of myelodysplastic syndromes: evidence of multipotent stem cell origin. *Blood* 1989; **73**: 248-254.
- Gale RE, Wheadon H, Goldstone AH, Burnett AK, Linch DC. Frequency of clonal remission in acute myeloid leukaemia. *Lancet* 1993; **341**: 138-142.
- Claxton D, Deisseroth A, Talpaz M, Reading C, Kantarjian H, Trujillo J, Stass S, Gooch G, Spitzer G. Polyclonal hematopoiesis in interferon-induced cytogenetic remissions of chronic myelogenous leukemia. *Blood* 1992; **79**: 997-1002.
- Willman CL, Sever CE, Pallavicini MG, Harada H, Tanaka N, Slovak ML, Yamamoto H, Harada K, Meeker TC, List AF, Taniguchi T. Deletion of IRF-1 mapping to chromosome 5q31.1 in human

- leukemia and preleukemic myelodysplasia. *Science* 1993; **259**: 968-971.
- 27 Killman SA. Acute leukemia: the kinetics of leukemic blast cells in man. An analytical review. *Semin Hematol* 1968; **1**: 38-102.
- 28 Hogge DE. Cytogenetics and oncogenes in leukemia. *Curr Opin Oncol* 1994; **6**: 3-13.
- 29 Boulwood J, Fidler C, Lewis S, McCarthy A, Sheridan H, Kelly S, Oscier D, Buckle VJ, Wainscoat JS. Allelic loss of IRF-1 in myelodysplasia and acute myeloid leukemia: retention of IRF-1 on the 5q- chromosome in some patients with 5q- syndrome. *Blood* 1993; **82**: 2611-2616.
- 30 Harada H, Kondo T, Ogawa S, Tamura T, Kitagawa M, Tanaka N, Lamphier MS, Hirai H, Taniguchi T. Accelerated exon skipping of IRF-1 mRNA in human myelodysplasia, leukemia: a possible mechanism of tumor suppressor inactivation. *Oncogene* 1994; **9**: 3313-3320.
- 31 Harada H, Kitagawa N, Tanaka N, Yamamoto H, Harada K, Ishihara M, Taniguchi T. Anti-oncogenic and oncogenic potentials of interferon regulatory factors-1 and 2. *Science* 1993; **259**: 971-974.
- 32 Mucenski ML, Taylor BA, Ihle JN, Hartley JW, Morse HC III, Jenkins NA, Copeland NG. Identification of a common ecotropic viral integration site Evi-1 in the DNA of AKXD murine tumors. *Mol Cell Biol* 1988; **8**: 301-308.
- 33 Morishita K, Parganas E, William CL, Whittaker MH, Drabkin H, Oval J, Taetle R, Valentine MB, Ihle JN. Activation of Evi-1 gene expression in human acute myelogenous leukemias by translocations spanning 300-400 kilobases on chromosome band 3q26. *Proc Natl Acad Sci USA* 1992; **89**: 3937-3941.
- 34 Jacobs A. Gene mutations in myelodysplasia. *Leukemia Res* 1992; **16**: 47-50.
- 35 Ridge SA, Worwood M, Oscier D, Jacobs A, Padua RA. Fms mutations in myelodysplastic, leukemic and normal subjects. *Proc Natl Acad Sci USA* 1990; **87**: 1377-1380.
- 36 Mori N, Hidai H, Yokota J, Okada M, Motoji T, Oshimi K, Mizoguchi H. Mutations of the p53 gene in myelodysplastic syndrome and overt leukemia. *Leukemia Res* 1995; **19**: 869-875.
- 37 Sheridan BL, Rels MD. Oncogene involvement in myelodysplasia and acute myeloid leukemia. *Tumor Biol* 1990; **1** (Suppl. 1): 44-58.
- 38 Raza A, Yousuf N, Bokhari SAJ, Mehdi A, Masterson M, Lampkin B, Yanik G, Mazewski C, Khan S, Preisler HD. Contribution of *in vivo* proliferation/differentiation studies towards the development of a combined functional and morphologic system of classification of neoplastic disease. *Cancer* 1992; **69**: 1557-1566 (Suppl.).
- 39 Raza A, Bokhari J, Yousuf N, Mehdi A, Mazewski C, Khan S, Baker V, Lampkin B. Cell cycle kinetic studies in human cancers: development of three DNA-specific labels in three decades. *Arch Pathol Lab Med* 1991; **115**: 873-879.
- 40 Mundle S, Iftikhar A, Shetty V, Dameron S, Wright-Quinones V, Marcus B, Loew J, Gregory S, Raza A. Novel *in situ* double-labeling for simultaneous detection of proliferation and apoptosis. *J Histochem Cytochem* 1994; **42**: 1533-1537.
- 41 Mundle S, Iftikhar A, Shetty V, Alvi S, Dameron S, Gregory S, Marcus B, Khan S, Raza A. *In situ* end labeling of DNA to detect apoptotic cell death in a variety of human tumors. *Cell Death Diff* 1994; **1**: 117-122.
- 42 Alvi S, Borok R, Mundle S, Gao X-Z, Shetty V, Hines C, Robin E, Rifkin S, Klein M, Alston D, Hernandez B, Hsu W-T, Gezer S, Gregory S, Raza A. Detection of high molecular weight DNA as evidence of apoptosis in myelodysplasia. *Proc Am Soc Hematol* 1995; **86**: 334 (Abstr. 1324).
- 43 Raza A, Mundle S, Iftikhar A, Gregory S, Marcus B, Khan Z, Alvi S, Shetty V, Dameron S, Wright V, Adler S, Loew J, Shott S, Ali N, Preisler H. Simultaneous assessment of cell kinetics and programmed cell death in bone marrow biopsies of myelodysplastics reveals extensive apoptosis as the probable basis for ineffective hematopoiesis. *Am J Hematol* 1995; **48**: 143-154.
- 44 Raza A, Gezer S, Mundle S, Gao X-Z, Alvi S, Borok R, Rifkin S, Iftikhar A, Shetty V, Parcharido A, Loew J, Marcus B, Khan Z, Chaney C, Showel J, Gregory S, Preisler H. Apoptosis in bone marrow biopsy samples involving stromal and hematopoietic cells in 50 patients with myelodysplastic syndromes. *Blood* 1995; **86**: 268-276.
- 45 Hibner U, Coutinho A. Signal antagonism: a mechanism for apoptosis induction. *Cell Death Diff* 1994; **1**: 33-37.
- 46 Verhoef GEG, De Schouwer P, Ceuppens J, Van Damme J, Goossens W, Boogaerts MA. Measurement of serum cytokine levels in patients with myelodysplastic syndromes. *Leukemia* 1992; **6**: 1268-1272.
- 47 Keller JR, Jacobsen SEW, Dubois CM, Hestdal K, Ruscetti FW. Transforming growth factor- β : a bidirectional regulator of hematopoietic cell growth. *Int J Cell Clon* 1992; **10**: 2-11.
- 48 Mundle S, Alvi S, Dong L-M, Gezer S, Venugopal P, Hines C, Gregory S, Robin E, Rifkin S, Klein M, Alston D, Hernandez B, Hsu W-T, Shetty V, Raza A. Interleukin-1 β converting enzyme-like protease may be involved in the intramedullary apoptotic death in the marrows of patients with myelodysplasia. *Proc Am Soc Hematol* 1995; 334a (Abstr. 1323).
- 49 Shetty V, Dar S, Span L, Alvi S, Venugopal P, Gezer S, Borok R, Mundle S, Chopra H, Hines C, Jassak P, Gregory SA, Robin E, Rifkin S, Alston D, Hernandez B, Shah R, Raza A. Contribution of macrophages and a variety of cytokines in the pathogenesis of myelodysplastic syndromes (MDS). *Proc Am Soc Clin Oncol* 1996; **15**: 424 Abstr. 1308.
- 50 Zeigler ZR, Jones D, Rosenfeld CS, Shaddock RK. Recombinant human erythropoietin (rHuEPO) for treatment of myelodysplastic syndrome. *Stem Cells* 1993; **11**: 49-55.
- 51 Ganser A, Hoelzer D. Treatment of myelodysplastic syndromes with hematopoietic growth factors. *Hematol/Oncol Clin N Am* 1992; **6**: 633-653.
- 52 Negrin RS, Stein R, Vardiman J, Doherty K, Cornwell J, Krantz S, Greenberg PL. Treatment of the anemia of myelodysplastic syndromes using recombinant human granulocyte colony-stimulating factor in combination with erythropoietin. *Blood* 1993; **82**: 737-743.
- 53 Gerhartz HH, Marcus R, Delmer A, Zwierzina H, de Witte T, Jacobs A, Visiani G, Fiere D, Sonneveld P, Labar B, Hoffbrand AV, Fenaux P, Hayat M, Thyss A, Debucher L, Coiffier B, Sizoo W, Willemze R, Ribeiro M, Suci S, Solbu G, Stern Z, Zittoun R, for the EORTC Leukaemia Group. Treatment of myelodysplastic syndromes (MDS) and high leukaemic risk with low-dose cytosine arabinoside (LD-AraC) plus granulocyte-macrophage colony-stimulating factor (rhGM-CSF). *Infection* 1992; **20**: S116-S123.
- 54 Bursten S, Weeks R, West J, Le T, Wilson T, Porubek D, Bianco JA, Singer JW, Rice GC. A potential role for phosphatidic acid in mediating the inflammatory responses of TNF- α and IL-1. *Circ Shock* 1994; **44**: 14-29.
- 55 Abraham E, Burstein S, Shemkar R, Allbee J, Tuder R, Woodson P, Guidot DM, Rice GC, Singer JW, Repine JE. Phosphatidic acid signalling mediates lung cytokine expression and lung inflammatory injury after hemorrhage in mice. *J Exp Med* 1995; **181**: 569-575.
- 56 Clark E, Rice GC, Weeks RS, Jenkins N, Nelson R, Bianco JA, Singer JW. Lisophylline inhibits TGF- β release and enhances tri-lineage hematopoietic recovery after 5-FU treatment in mice. *Cancer Res* 1996; **56**: 105-112.
- 57 Ward A, Clossold SP. Pentoxifylline: a review of its pharmacodynamic and pharmacokinetic properties and therapeutic efficacy. *Drugs* 1987; **34**: 50-97.
- 58 Thompson JA, Bianco JA, Benyunes MC, Neubauer MA, Slattery JT, Fefer A. Phase Ib trial of pentoxifylline and ciprofloxacin in patients treated with interleukin-2 and lymphokine-activated killer cell therapy for metastatic renal cell carcinoma. *Cancer Res* 1994; **54**: 3436-3441.
- 59 Rice GC, Rosen JW, Weeks R, Michnik J, Bianco JA, Singer JW. CT-1501R selectively inhibits induced inflammatory monokines in human whole blood *ex vivo*. *Shock* 1994; **1**: 254-266.

Volume 10, Number 10
October 1996

LEUKEMIA

Normal and Malignant Hemopoiesis

OCT 16 1996

LIB SCIENCES LIBRARIES

Official Journal of the

Leukaemia Research Fund, UK


STOCKTON

Published on behalf of the Sven-Aage Killmann Leukemia Foundation

LEUKEMIA

October 1996

CONTENTS

Volume 10, Number 10

THERAPY AND THERAPEUTICAL INTERVENTIONS

Clinical and laboratory studies of 2-chlorodeoxyadenosine ± cytosine arabinoside for relapsed or refractory acute myelogenous leukemia in adults 1563
SM Kornblau, V Gandhi, HM Andreeff, M Beran, HM Kantarjian, CA Koller, S O'Brien, W Plunkett & E Estey

The use of lipid formulations of amphotericin B for systemic fungal infections 1570
ACAP Leenders & S de Marie

MOLECULAR BIOLOGY

A novel pre-B acute lymphoblastic leukemia cell line with chromosomal translocation between p16^{INK4A}/p15^{INK4B} tumor suppressor and immunoglobulin heavy chain genes: TGFβ/IL-7 inhibitory signaling mechanism 1576
M Urashima, Y Hoshi, Y Sugimoto, C Kaihara, M Matsuzaki, D Chauhan, A Ogata, G Teoh, JA DeCaprio & KC Anderson

Expression of type III receptor tyrosine kinases FLT3 and KIT and responses to their ligands by acute myeloid leukemia blasts 1584
A Stacchini, L Fubini, A Severino, F Sanavio, M Aglietta & W Piacibello

SENSITIVITY AND RESISTANCE TO THERAPY

Sensitivity to dexamethasone and absence of bcl-2 protein in Burkitt's lymphoma cell line (Black93) derived from a patient with acute tumor lysis syndrome: comparative study with other BL and non-BL lines 1592
A Tani, E Tatsumi, F Nakamura, S Kumagai, Y Kosaka, K Sano, H Nakamura, R Amakawa & H Ohno

ADHESION AND STROMAL STUDIES

Interactions between endogeneous lectins and fucosylated oligosaccharides in megakaryocyte-dependent fibroblast growth of the normal bone marrow 1604
B Schmitz, J Thiele, F Otto, S Theile-Ochel, T Heedt, U Zensen, SE Baldus, C Wickenhauser & R Fischer

BONE MARROW TRANSPLANTATION

Splenectomy for poor graft function after allogeneic bone marrow transplantation in patients with chronic myeloid leukemia 1615
C Richard, I Romón, M Perez-Encinas, J Baro, MJ Rabuñal, F Mazon, M Garcia de Polavieja, M Briz, M Ortin, A Iriando, G Hermida, E Conde, JL Bello & A Zubizarreta

P53b STUDIES

Retroviral transduction of hematopoietic progenitor cells with mutant p53 promotes survival and proliferation, modifies differentiation potential and inhibits apoptosis 1619
Y Shounan, A Dolnikov, KL MacKenzie, M Miller, YY Chan & G Symonds

ANIMAL MODELS

Elevated *pim-1* and *c-myc* proto-oncogene induction in B lymphocytes from BLV-infected cows with persistent B lymphocytosis 1629
DM Stone, LK Norton, NS Magnuson & WC Davis

Dendritic cells prevent radiation-induced thymic lymphoma 1639

EF Potworowski, F Gagnon, C Beauchemin & Y St Pierre

OPEN FORUM

A paradigm shift in myelodysplastic syndromes 1648
A Raza, S Mundle, V Shetty, S Alvi, H Chopra, L Span, A Parcharidou, S Dar, P Venugopal, R Borok, S Gezer, J Showel, J Loew, E Robin, S Rifkin, D Alston, B Hernandez, R Shah, H Kaizer, S Gregory & H Preisler

CORRESPONDENCE

CASE REPORTS

Clinical aspects of expression of inversion 16 chromosomal fusion transcript *CBFB/MYH11* in acute myelogenous leukemia subtype M1 with abnormal bone marrow eosinophilia 1653
BP Monahan, JT Rector, PP Liu, JD Cotelingam & W Dahut

Cytogenetic and molecular characterization of a variant translocation associated with acute promyelocytic leukemia and involving chromosomes 11, 15 and 17 1655

L Casula, N Archidiacono, M Grazia Pau, M Addis, R Mura, R Galanello, P Biddau, A Cao & A Nucaro

Variant t(1;15;17)(q23;q22;q23) in a case of acute promyelocytic leukemia 1658

P Galieni, G Marotta, F Vessicelli, D Diverio, F Minoletti, A Bucalossi, F Lo Coco & F Lauria

WORKSHOP REPORT

Synopsis of the International Workshop on 'Risk Factors for Adult Leukaemias and Lymphomas', Heidelberg, Germany, 15-16 January 1996 1662
M Blettner, F Alexander, T Mason, S Preston-Martin & B Schlehofer

MEETING REPORT

International conference on chronic myelocytic leukemia: biology and treatment organised by the Scientific Committee of The Israel Society of Hematology, Jerusalem, Israël, 28-31 January 1996
GM Janković & MD Čolović

1667

Association of Epstein-Barr virus with human immunodeficiency virus-negative T cell lymphomas in Japan, *in situ* hybridization, polymerase chain reaction and immunohistochemical studies
Y Hirose, Y Masaki, S Shimizu, Y Ogawa, S Takeshita, M Fukutoku, S Sugai & T Takiguchi

1670

LETTERS TO THE EDITOR

HLA and Hodgkin's disease
MT Dorak, KI Mills, CH Poynton & AK Burnett

1671

ERRATUM

1670

Leptomeningeal myelomatosis in well-controlled multiple myeloma

1672

K Hirata, T Takahashi, K Tanaka, I Shinzato, A Matsushita, T Ishikawa, K Nagai, S Saiwai & T Miyamoto



The contents page of this journal is now available on the Internet before publication at: <http://www.stockton-press.co.uk>



Leukemia is published on behalf of the Sven-Aage Killmann Leukemia Foundation by Stockton Press, a division of Macmillan Press Ltd.

Scope *Leukemia* aims to provide a vehicle for all disciplines which directly or indirectly contribute to our understanding and treatment of leukemia, lymphoma and allied diseases. Studies on normal hemopoiesis are as important as those on leukemia because of their comparative relevance.

This journal is covered by Current Contents, Excerpta Medica, Current Advances in Cell and Developmental Biology and Current Advances in Genetics and Molecular Biology.

The contents page of this journal is now available on the Internet before publication at: <http://www.stockton-press.co.uk>

Editorial Manuscripts (plus two copies) and all editorial correspondence should be sent to the Editor.

C Nicole Muller-Bérat Killmann, MD, Editor in Chief
Leukemia, Hôpital St Louis, 1, Avenue Claude Vellefaux, 75475 Paris Cedex 10, France
Tel: +33 42 49 40 84
Fax: +33 42 49 40 85

Advertisements Enquiries concerning advertisements should be addressed to: Michael Rowley, Hasler House, High Street, Great Dunmow, Essex CM6 1AP, UK. Tel: +44 (0) 1371 874613. Fax: +44 (0) 1371 872273.

Publisher All business correspondence, copyright, supplement enquiries and reprint requests should be addressed to *Leukemia*, Stockton Press, Houndmills, Basingstoke, Hampshire RG21 6XS, UK. Tel: +44 (0) 1256 29242. Fax: +44 (0) 1256 810526.
Publisher: Jayne Marks
Production Controller: Jane Torr
Supplement Editor: Matthew Smith
Supplement Production Controller: Simone Larché

Subscriptions – EU/Rest of World Subscription price per annum (one volume, twelve issues); EU £475, rest of the world £475 (surface), £570 (airmail) or equivalent in any other currency. Personal subscriptions to be accompanied by a personal cheque or credit card details can be obtained for £199. Orders must be accompanied by remittance. Cheques should be made payable to *Macmillan Magazines* and sent to: The Subscription Department, Macmillan Press Ltd, Houndmills, Basingstoke, Hampshire RG21 2XS, UK. Where appropriate, subscribers may make payments into UK Post Office Giro Account No. 519 2455. Full details must accompany the payment. Subscribers from EU territories should add sales tax at the local rate.

Subscriptions – USA USA subscribers call toll free 1-800-221 2123 or send check/money order/credit card details to: Stockton Press, 345 Park Avenue South, 10th floor, New York, NY 10010-1707. Tel: +1 212 689 9200. Fax: +1 212 689 9711. USA annual subscription rates: (institutional/corporate): \$755 (surface), \$905 (airmail). Individual making personal payment: \$310. Individual rate available only by payment with personal check or credit card. Corporate/institutional checks or credit cards may not be used as payment for individual rate. Prices are set in UK Sterling. Dollar prices are converted to UK Sterling at the current exchange rate. Accordingly, your credit card charge may be slightly more than the dollar rate shown. To obtain the exact dollar rate shown above, please remit by check. All prices are subject to change without notice.

Reprints of any article in this journal are available from Stockton Press, Houndmills, Basingstoke, Hampshire RG21 6XS, UK. Tel: +44 (0) 1256 29242. Fax: +44 (0) 1256 810526.

Leukemia (ISSN 0887-6924) is published monthly by Macmillan Press Ltd, c/o Mercury Airfreight International Ltd, 2323 Randolph Avenue, Avenel, NJ 07001, USA. Subscription price for institutions is \$905 per annum. 2nd class postage is paid at Rahway NJ. Postmaster: send address corrections to Macmillan Press Ltd, c/o Mercury Airfreight International Ltd, 2323 Randolph Avenue, Avenel, NJ 07001

Copyright © 1996 Stockton Press
ISSN 0887-6924

All rights of reproduction are reserved in respect of all papers, articles, illustrations, etc, published in this journal in all countries of the world.

All material published in this journal is protected by copyright, which covers exclusive rights to reproduce and distribute the material. No material published in this journal may be reproduced or stored on microfilm or in electronic, optical or magnetic form without the written authorization of the Publisher.

Authorization to photocopy items for internal or personal use of specific clients, is granted by Stockton Press, for libraries and other users registered with the Copyright Clearance Center (CCC) Transaction Reporting Service, provided that the base fee of \$12.00 per copy is paid directly to CCC, 21 Congress St, Salem, MA 01970, USA 0887-6924/96 \$12.00 + \$0.00

Apart from any fair dealing for the purposes of research or private study, or criticism or review, as permitted under the Copyright, Designs and Patent Act 1988, this publication may be reproduced, stored or transmitted, in any form or by any means, only with the prior permission in writing of the publishers, or in the case of reprographic reproduction, in accordance with the terms of licences issued by the Copyright Licensing Agency.

Whilst every effort is made by the publishers and editorial board to see that no inaccurate or misleading data, opinion or statement appears in this Journal, they wish to make it clear that the data and opinions appearing in the articles and advertisements herein are the responsibility of the contributor or advertiser concerned. Accordingly, the publishers and The Foundation, the editorial committee and their respective employees, offices and agents accept no liability whatsoever for the consequences of any such inaccurate or misleading data, opinion or statement. Whilst every effort is made to ensure that drug doses and other quantities are presented accurately, readers are advised that new methods and techniques involving drug usage, and described within this Journal, should only be followed in conjunction with the drug manufacturer's own published literature.

Typeset by Photo-graphics, Honiton, Devon

Printed on acid-free paper, effective with Volume 8, Issue 1, 1994

Printed and bound in Great Britain by Latimer Trend & Company Ltd, Plymouth