



US006757729B1

(12) **United States Patent**
Devarakonda et al.

(10) **Patent No.:** **US 6,757,729 B1**
(45) **Date of Patent:** ***Jun. 29, 2004**

(54) **VIRTUAL ENVIRONMENT MANAGER FOR NETWORK COMPUTERS**

(75) Inventors: **Murthy Devarakonda**, Briarcliff Manor, NY (US); **Ajay Mohindra**, Yorktown Heights, NY (US); **Deborra Jean Zukowski**, Yorktown Heights, NY (US)

(73) Assignee: **International Business Machines Corporation**, Armonk, NY (US)

(*) Notice: This patent issued on a continued prosecution application filed under 37 CFR 1.53(d), and is subject to the twenty year patent term provisions of 35 U.S.C. 154(a)(2).

Subject to any disclaimer, the term of this patent is extended or adjusted under 35 U.S.C. 154(b) by 0 days.

(21) Appl. No.: **08/722,434**

(22) Filed: **Oct. 7, 1996**

(51) **Int. Cl.**⁷ **G06F 15/173**; G06F 15/16; G06F 9/00

(52) **U.S. Cl.** **709/226**; 709/229; 718/104

(58) **Field of Search** 395/200.02, 200.06, 395/200.09, 200.2, 694, 680, 682, 683; 718/100, 104; 719/330, 310, 315; 709/200-226, 229

(56) **References Cited**

U.S. PATENT DOCUMENTS

| | | | | | |
|-----------|---|---|---------|-----------------|----------|
| 5,187,787 | A | * | 2/1993 | Skeen et al. | 709/314 |
| 5,261,044 | A | * | 11/1993 | Dev et al. | 345/855 |
| 5,287,507 | A | * | 2/1994 | Hamilton et al. | 719/315 |
| 5,341,477 | A | * | 8/1994 | Pitkin et al. | 709/226 |
| 5,408,619 | A | * | 4/1995 | Oran | 707/10 |
| 5,426,421 | A | * | 6/1995 | Gray | 340/3.32 |
| 5,442,791 | A | * | 8/1995 | Wrabetz et al. | 709/330 |

(List continued on next page.)

FOREIGN PATENT DOCUMENTS

| | | | |
|----|---------------|---------|-----------|
| EP | 0780778 | 12/1995 | |
| WO | 95 17064 A1 * | 6/1995 | 29/6 |
| WO | 9944124 A1 * | 9/1999 | G06F/9/46 |
| WO | 9944127 A1 * | 9/1999 | G06F/9/46 |
| WO | 9944134 A1 * | 9/1999 | G06F/9/46 |
| WO | 0077635 A1 * | 12/2000 | G06F/9/46 |
| WO | 0223927 A2 * | 3/2002 | H04Q/7/00 |

OTHER PUBLICATIONS

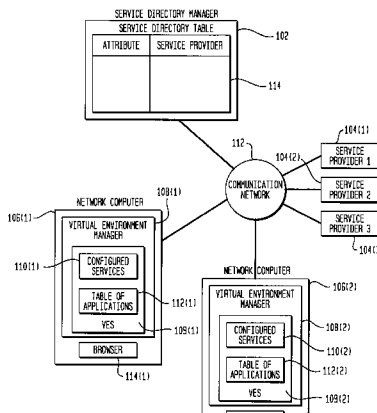
(Berstein) Bernstein, Philip A. "Middleware: A Model for Distributed System Services", pp. 86-98, Feb. 1996.*
 Zukowski et al. "Metis: A Thin-Client Application Framework" Jun. 1997, USENIX.*
 Waldo, Jim. "Object-oriented programming on the Network." ECOOP'99, 1999.*
 Wollrath, Ann. et al. "Simple Activation for Distributed Objects", USENIX, Conference on OO Technologies (COOTS), Jun. 1995.*
 Wollrath, Ann et al. "A Distributed Object Model for Java", USENIX, Conference on OO Technologies and Systems (COOTS), Jun. 1996.*
 Sun Microsystems. "The Java Language Environment, A White Paper", Oct. 1995.*
 Joint Submission, Interoperability Between Microsoft COM and OMG CORBA 2.0, Aug. 1994.*

Primary Examiner—Lewis A. Bullock, Jr.
(74) *Attorney, Agent, or Firm*—Gail H. Zarich; Anne Vachon Dougherty

(57) **ABSTRACT**

A system and method for a downloadable just-in-time middleware called VEM that provides access to network services, including system services such as printing and local storage, to applications that run on Network Computers. The VEM configures the default client services and stores information about these services. When an application executing on the Network Computer wishes to use one of the services, it communicates with its local VEM. The VEM returns a handle to the appropriate service to complete the service request.

17 Claims, 5 Drawing Sheets



U.S. PATENT DOCUMENTS

| | | | | | | | | | |
|-------------|---|---------|----------------------|---------|--------------|---|---------|------------------------|---------|
| 5,475,819 A | * | 12/1995 | Miller et al. | 709/203 | 6,012,100 A | * | 1/2000 | Frailong et al. | 709/250 |
| 5,483,652 A | | 1/1996 | Sudama et al. | 395/600 | 6,073,172 A | * | 6/2000 | Frailong et al. | 709/222 |
| 5,734,828 A | * | 3/1998 | Pendse et al. | 709/203 | 6,131,116 A | * | 10/2000 | Riggins et al. | 709/203 |
| 5,748,896 A | * | 5/1998 | Daly et al. | 709/223 | 6,144,960 A | * | 11/2000 | Okada et al. | 707/10 |
| 5,802,530 A | * | 9/1998 | Van Hoff | 345/835 | 6,185,611 B1 | * | 2/2001 | Waldo et al. | 709/221 |
| 5,826,000 A | * | 10/1998 | Hamilton | 714/4 | 6,266,774 B1 | * | 7/2001 | Sampath et al. | 713/201 |
| 5,838,906 A | * | 11/1998 | Doyle et al. | 709/202 | 6,449,642 B2 | * | 9/2002 | Bourke-Dunphy et al. . | 709/222 |
| 5,852,722 A | * | 12/1998 | Hamilton | 709/221 | 6,496,858 B1 | * | 12/2002 | Frailong et al. | 709/221 |
| 5,870,544 A | * | 2/1999 | Curtis | 709/229 | 6,560,656 B1 | * | 5/2003 | O'Sullivan et al. | 709/250 |
| 5,886,697 A | * | 3/1999 | Naughton et al. | 345/473 | 6,591,290 B1 | * | 7/2003 | Clarisse et al. | 709/205 |
| 6,009,464 A | * | 12/1999 | Hamilton et al. | 709/219 | 6,604,127 B2 | * | 8/2003 | Murphy et al. | 709/203 |

* cited by examiner

FIG. 1

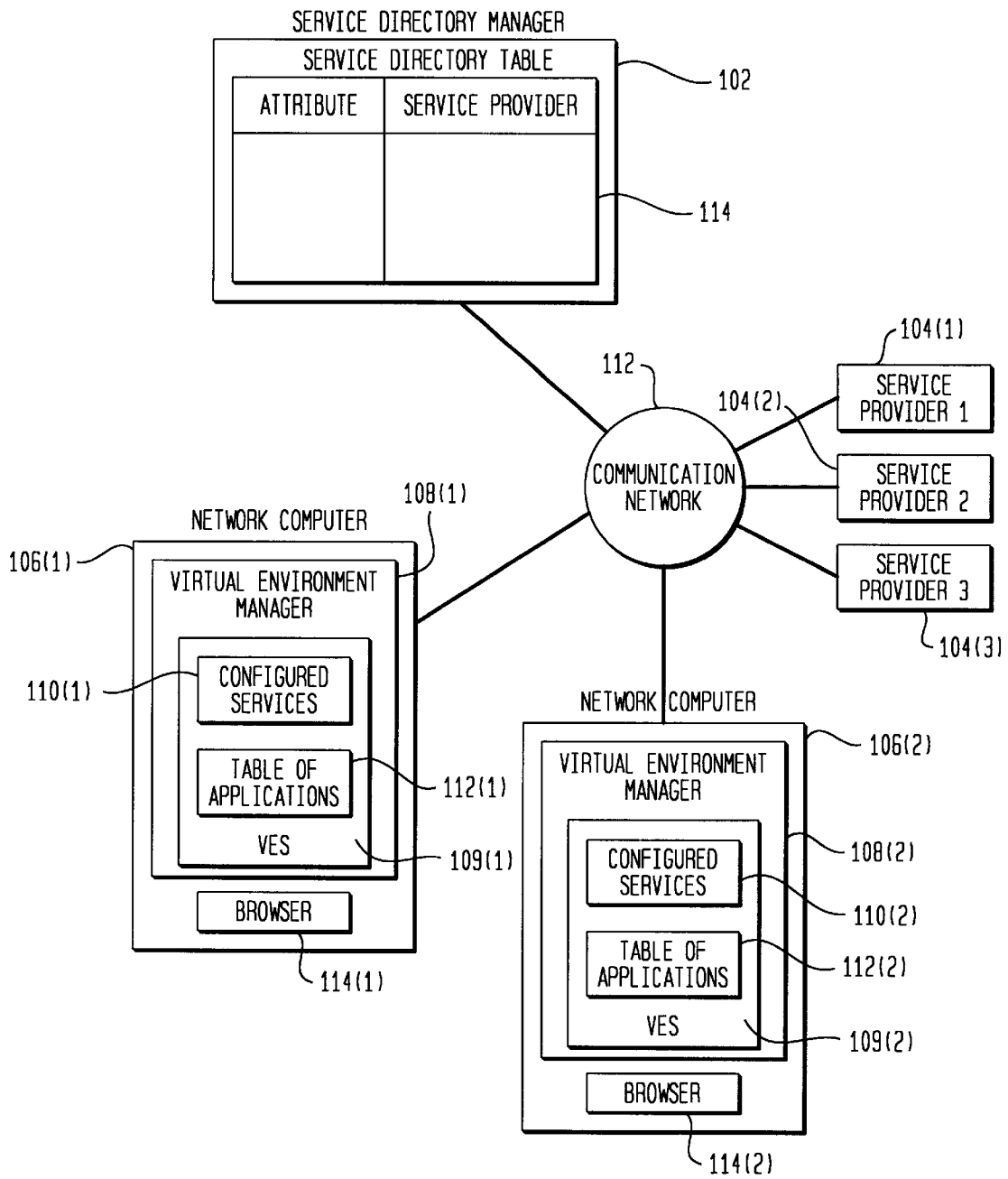


FIG. 2

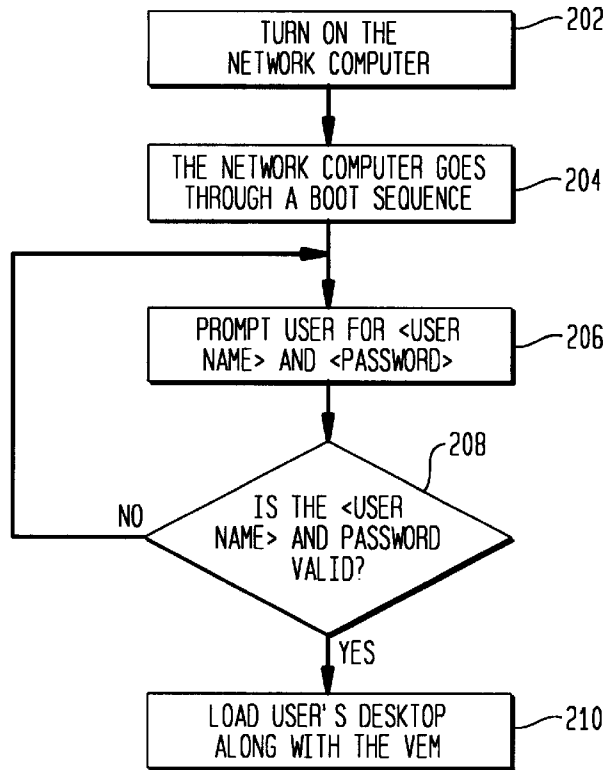


FIG. 3

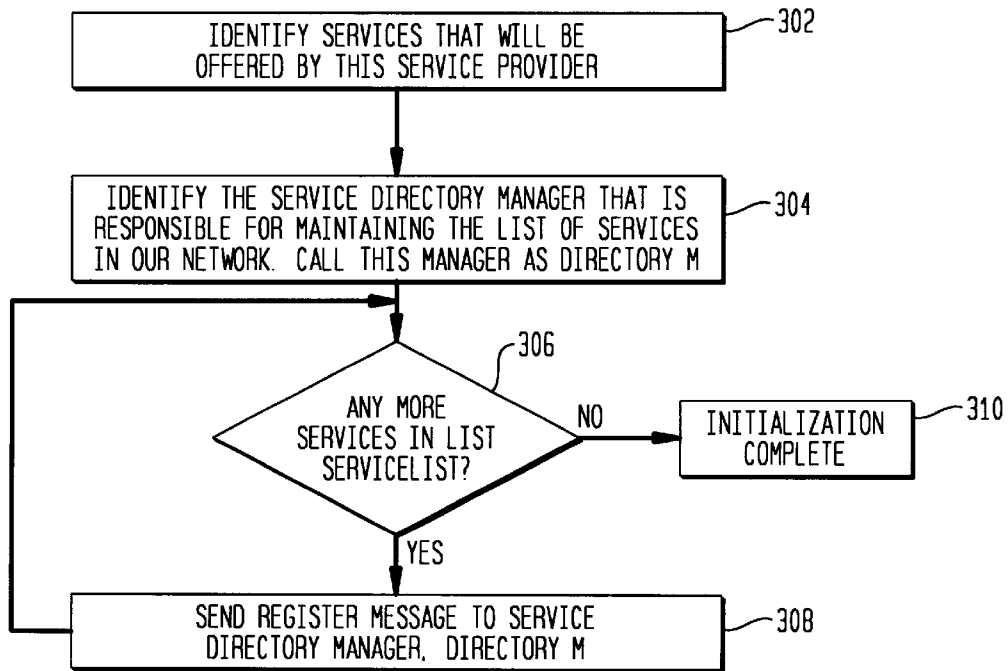
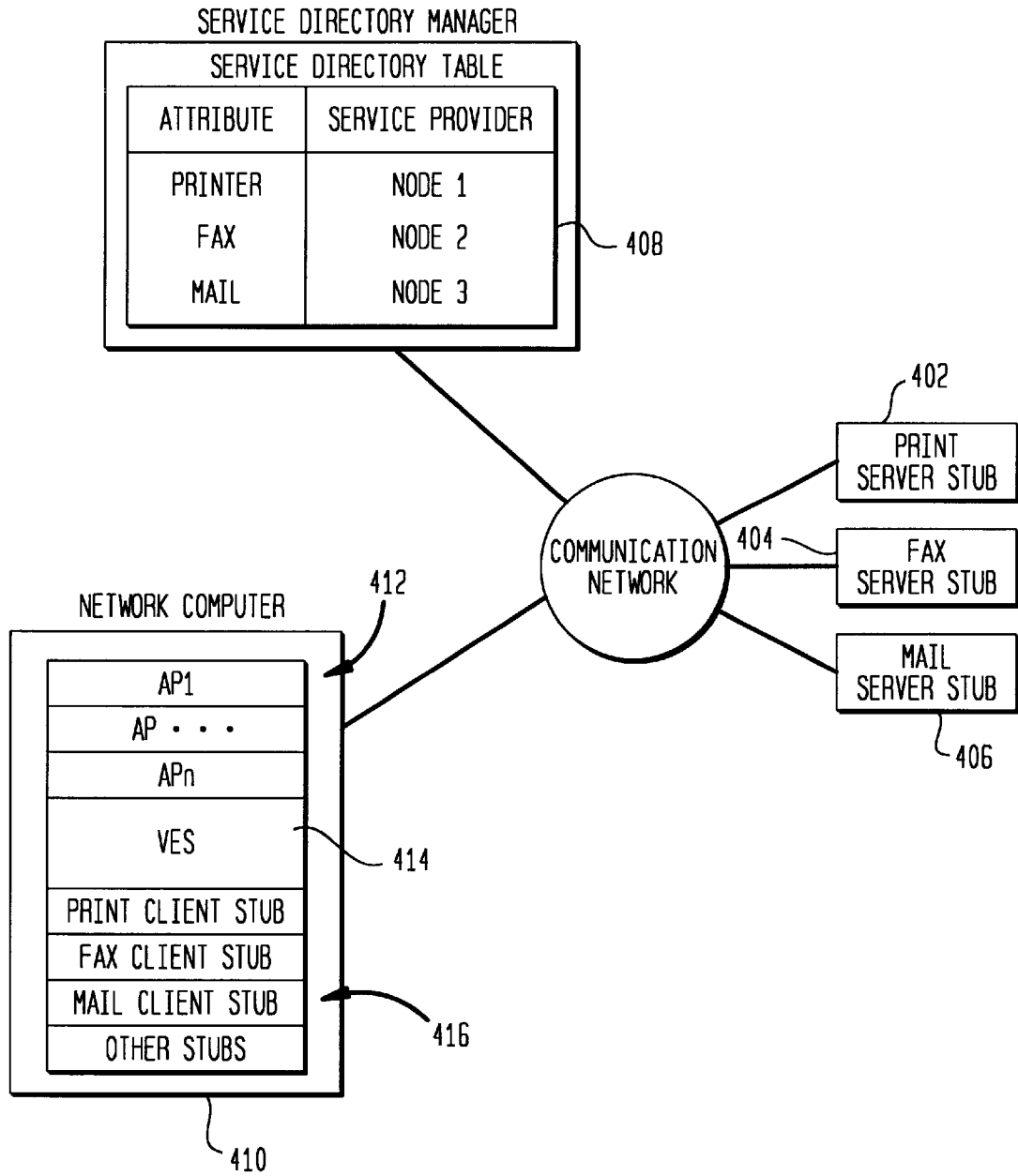


FIG. 4



Explore Litigation Insights

Docket Alarm provides insights to develop a more informed litigation strategy and the peace of mind of knowing you're on top of things.

Real-Time Litigation Alerts



Keep your litigation team up-to-date with **real-time alerts** and advanced team management tools built for the enterprise, all while greatly reducing PACER spend.

Our comprehensive service means we can handle Federal, State, and Administrative courts across the country.

Advanced Docket Research



With over 230 million records, Docket Alarm's cloud-native docket research platform finds what other services can't. Coverage includes Federal, State, plus PTAB, TTAB, ITC and NLRB decisions, all in one place.

Identify arguments that have been successful in the past with full text, pinpoint searching. Link to case law cited within any court document via Fastcase.

Analytics At Your Fingertips



Learn what happened the last time a particular judge, opposing counsel or company faced cases similar to yours.

Advanced out-of-the-box PTAB and TTAB analytics are always at your fingertips.

API

Docket Alarm offers a powerful API (application programming interface) to developers that want to integrate case filings into their apps.

LAW FIRMS

Build custom dashboards for your attorneys and clients with live data direct from the court.

Automate many repetitive legal tasks like conflict checks, document management, and marketing.

FINANCIAL INSTITUTIONS

Litigation and bankruptcy checks for companies and debtors.

E-DISCOVERY AND LEGAL VENDORS

Sync your system to PACER to automate legal marketing.