

(19) **United States**

(12) **Patent Application Publication** (10) **Pub. No.: US 2001/0014612 A1**

UESUGI

(43) **Pub. Date: Aug. 16, 2001**

(54) **TRANSMISSION POWER CONTROL METHOD AND TRANSMISSION/RECEPTION APPARATUS**

(30) **Foreign Application Priority Data**

Nov. 13, 1997 (JP) 9-329559

Publication Classification

(51) **Int. Cl.⁷ H04B 7/00**

(52) **U.S. Cl. 455/522; 370/342; 455/69**

(57) **ABSTRACT**

Slot quality detector 121 detects a reception level, and power controller 122 inversely corresponding to reception quality 122 outputs power control information indicative of increasing transmission power in the case where the detected reception level is higher than a threshold value and of decreasing the transmission power in the case where the detected quality is lower than the threshold value. Transmission power setter 108 performs the setting of transmission power corresponding to the power control information and provides a control to transmit by the set power. That allows improving of a battery saving and moderating of the specification of amplifiers in a transmission/reception apparatus, thereby resulting in decreased interference to signals of other users in the CDMA communication.

(75) **Inventor: MITSURU UESUGI, YOKOSUKA-SHI (JP)**

Correspondence Address:

**GREENBLUM & BERNSTEIN
1941 ROLAND CLARKE PLACE
RESTON, VA 20191**

(73) **Assignee: MATSUSHITA ELECTRIC INDUSTRIAL CO., LTD., OSAKA (JP)**

(*) **Notice:** This is a publication of a continued prosecution application (CPA) filed under 37 CFR 1.53(d).

(21) **Appl. No.: 09/185,507**

(22) **Filed: Nov. 4, 1998**

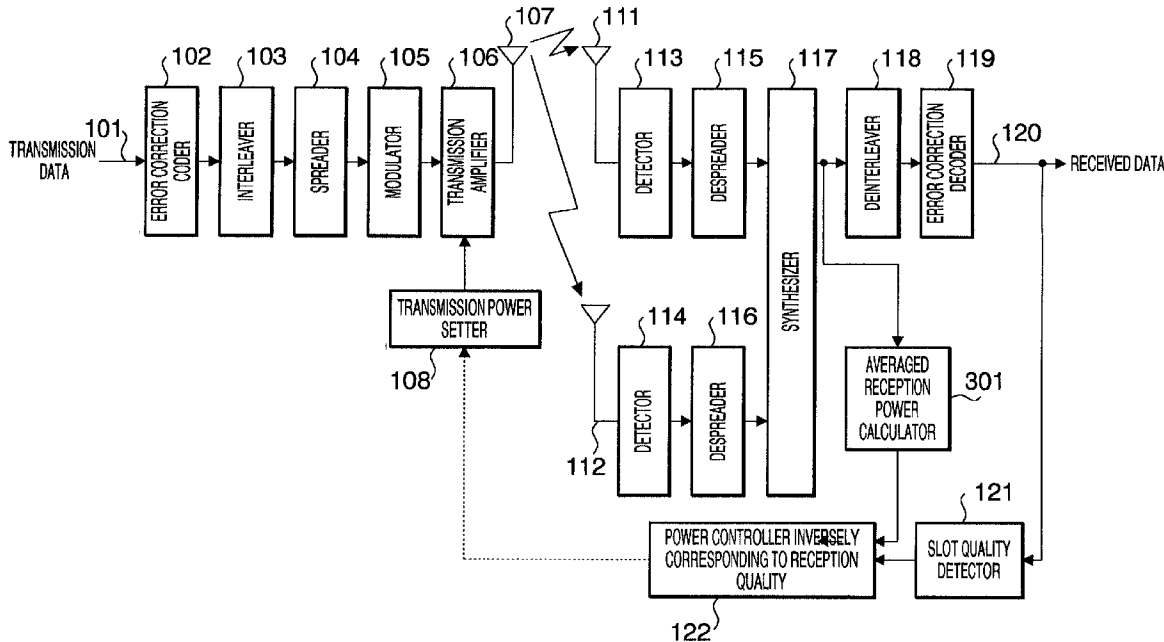


FIG. 1
PRIOR ART

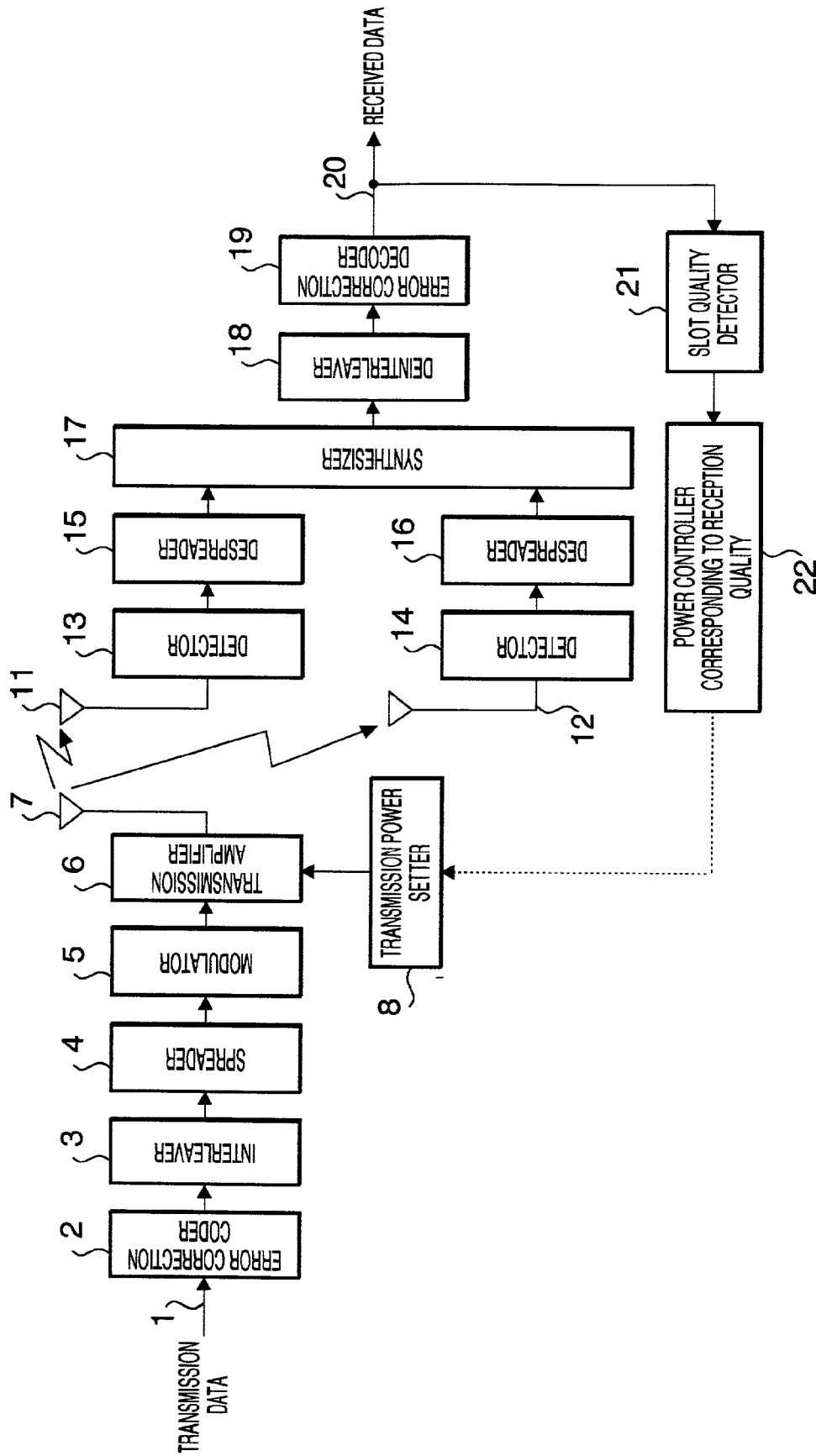


FIG. 2

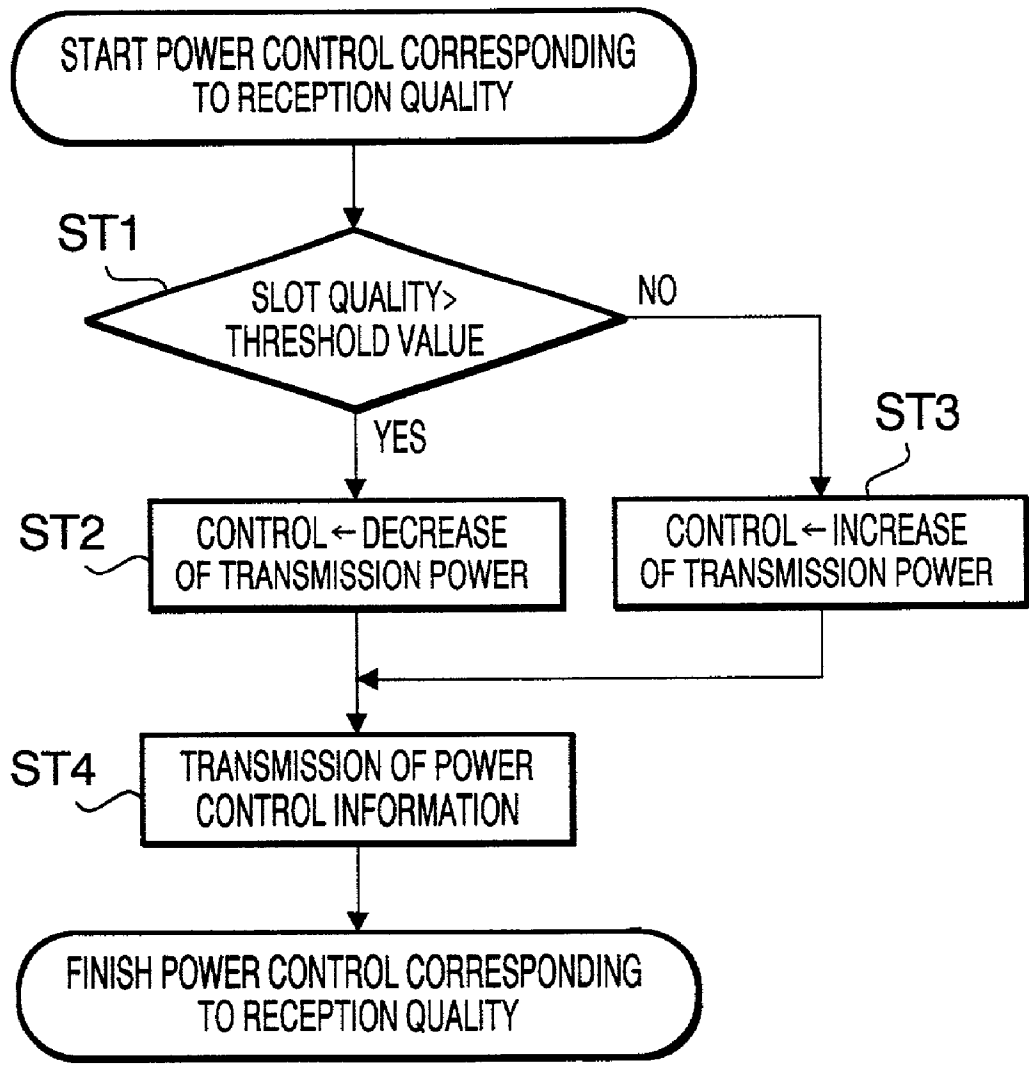


FIG. 3

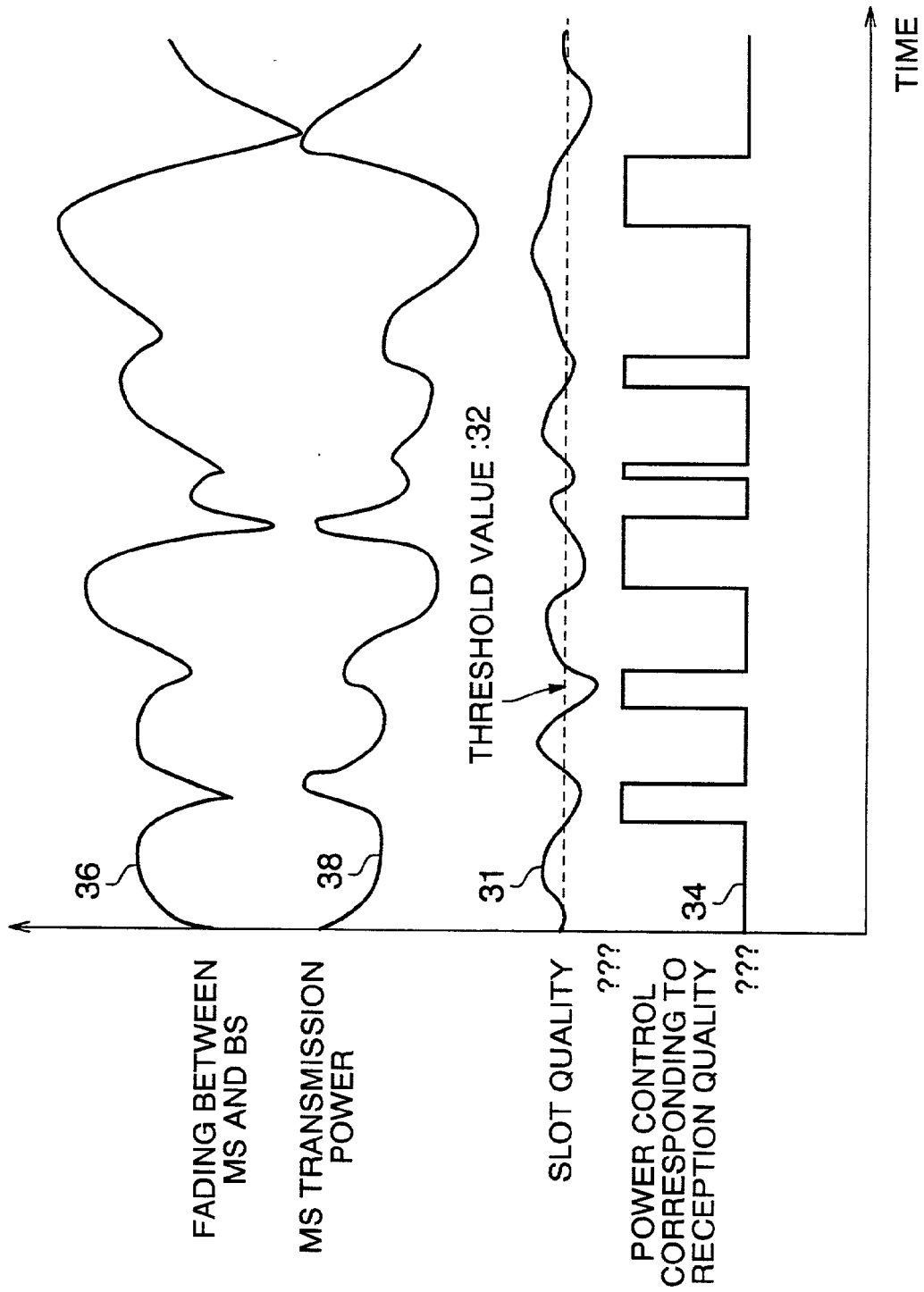
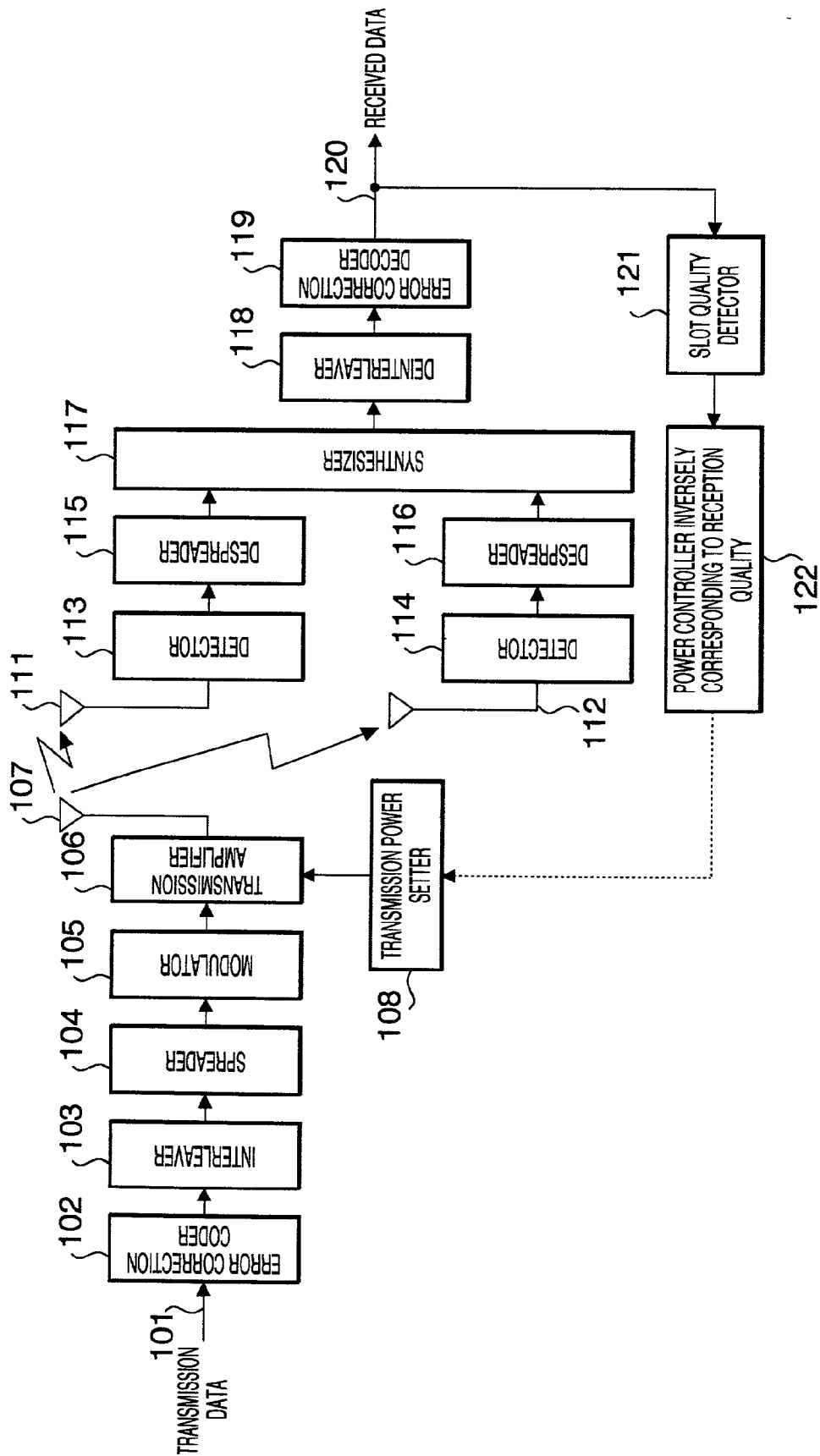


FIG. 4



Explore Litigation Insights

Docket Alarm provides insights to develop a more informed litigation strategy and the peace of mind of knowing you're on top of things.

Real-Time Litigation Alerts



Keep your litigation team up-to-date with **real-time alerts** and advanced team management tools built for the enterprise, all while greatly reducing PACER spend.

Our comprehensive service means we can handle Federal, State, and Administrative courts across the country.

Advanced Docket Research



With over 230 million records, Docket Alarm's cloud-native docket research platform finds what other services can't. Coverage includes Federal, State, plus PTAB, TTAB, ITC and NLRB decisions, all in one place.

Identify arguments that have been successful in the past with full text, pinpoint searching. Link to case law cited within any court document via Fastcase.

Analytics At Your Fingertips



Learn what happened the last time a particular judge, opposing counsel or company faced cases similar to yours.

Advanced out-of-the-box PTAB and TTAB analytics are always at your fingertips.

API

Docket Alarm offers a powerful API (application programming interface) to developers that want to integrate case filings into their apps.

LAW FIRMS

Build custom dashboards for your attorneys and clients with live data direct from the court.

Automate many repetitive legal tasks like conflict checks, document management, and marketing.

FINANCIAL INSTITUTIONS

Litigation and bankruptcy checks for companies and debtors.

E-DISCOVERY AND LEGAL VENDORS

Sync your system to PACER to automate legal marketing.