



US005189608A

United States Patent [19]

[11] Patent Number: **5,189,608**

Lyons et al.

[45] Date of Patent: * **Feb. 23, 1993**

[54] **METHOD AND APPARATUS FOR STORING AND GENERATING FINANCIAL INFORMATION EMPLOYING USER SPECIFIED INPUT AND OUTPUT FORMATS**

[75] Inventors: **Richard J. Lyons, West Hempstead; Kevin F. Nolan, Middle Village, both of N.Y.; Wah C. Chu, Fairfield, Conn.**

[73] Assignee: **IMRS Operations, Inc., Stamford, Conn.**

[*] Notice: The portion of the term of this patent subsequent to Jan. 29, 2008 has been disclaimed.

[21] Appl. No.: **480,701**

[22] Filed: **Feb. 15, 1990**

Related U.S. Application Data

[63] Continuation of Ser. No. 55,823, Jun. 1, 1987, Pat. No. 4,989,141.

[51] Int. Cl.⁵ **G06F 15/21**

[52] U.S. Cl. **364/408; 364/401**

[58] Field of Search **364/400, 401, 408; 11/11; 395/148**

[56] References Cited

U.S. PATENT DOCUMENTS

4,321,672 3/1982 Braun et al. 364/408

OTHER PUBLICATIONS

"Using Spreadsheets to Monitor Your Portfolio", Thomas A. Meyers PC Magazine, Apr. 1986.

Dow Jones Software, Product Brochure, Spreadsheet Analysis.

Teddi Converse, *Reflex In Business*, pp. 204-217 1988.

Doyle, William J., "Using SuperCal: The Next Generation" pp. 179, 292-315.

"Leading Edge: Nord Processing", pp. Appendix B.

"Using 1-2-3", pp. 182-193.

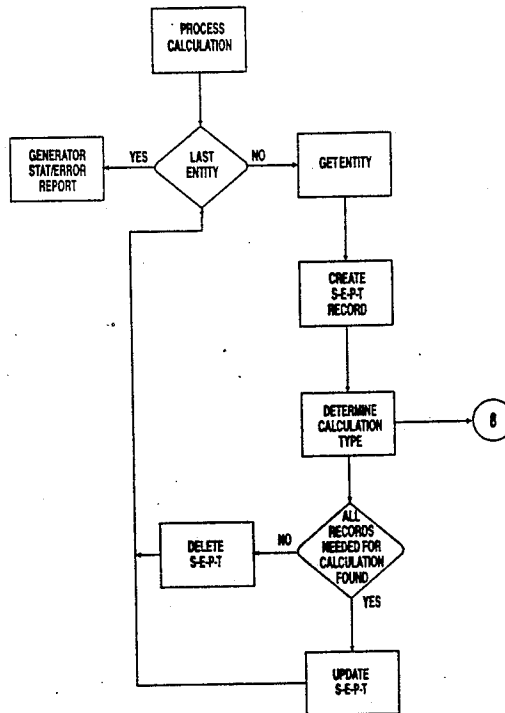
Primary Examiner—Gail O. Hayes

Attorney, Agent, or Firm—Pennie & Edmonds

[57] ABSTRACT

An advanced financial reporting and analysis software package is described. The package collects, organizes, manages and consolidates financial data and provides user defined capabilities for creating financial and corporate reports. Financial data is organized into four business classifications or dimensions: Schedule, Entity, Period and Type. Data is stored in the system in such a way that all data associated with a particular Schedule, Entity, Period and Type is identified by that particular SEPT value. To accommodate automatic data entry, a mapping means or template is provided that specifies for each different input spreadsheet the location of the first data cell in the spreadsheet and the size of the spreadsheet. Data is read from the data store by various report and spreadsheet generating functions which convert data associated with particular SEPT values to desired output formats.

9 Claims, 29 Drawing Sheets



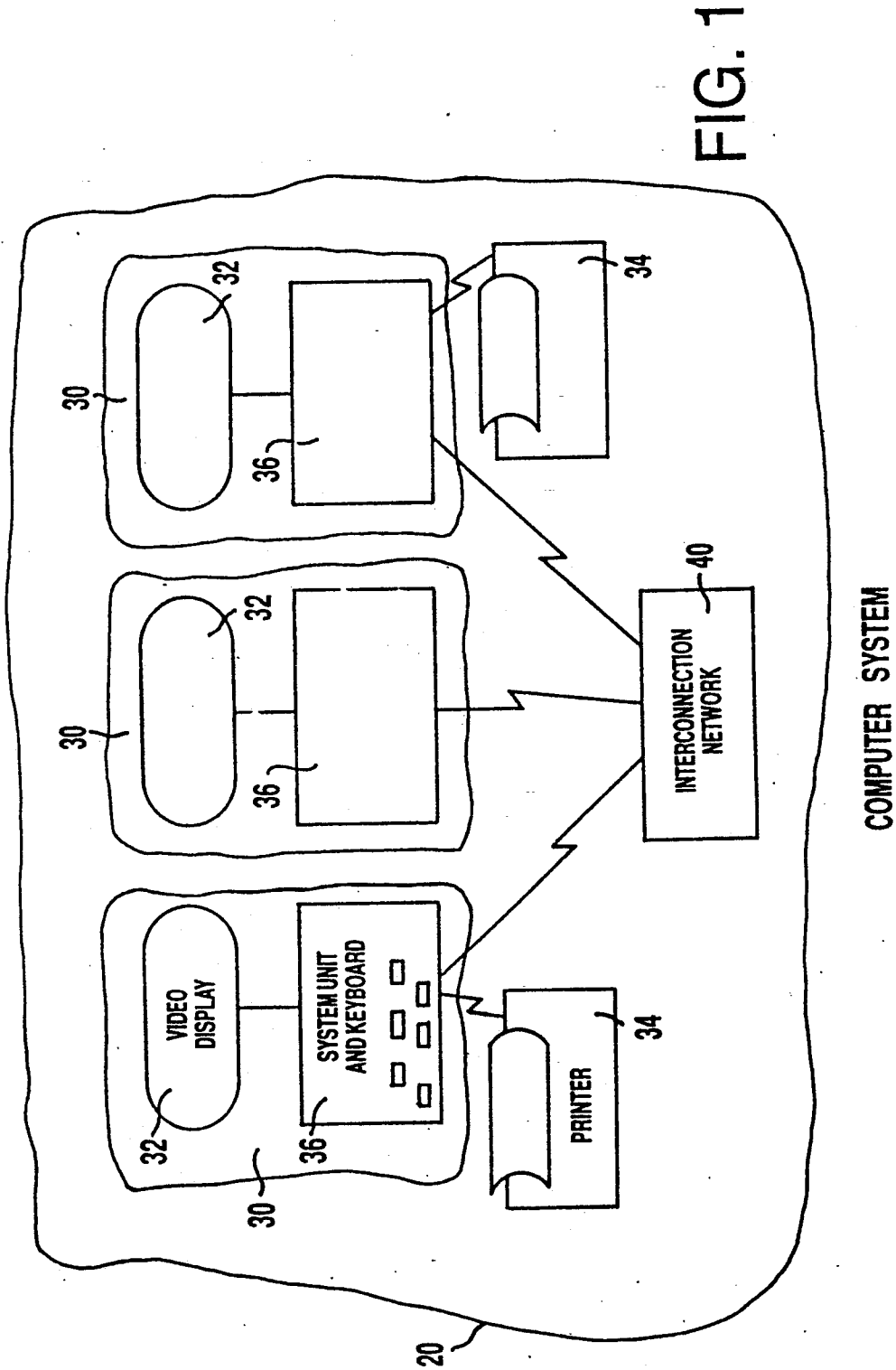


FIG. 1

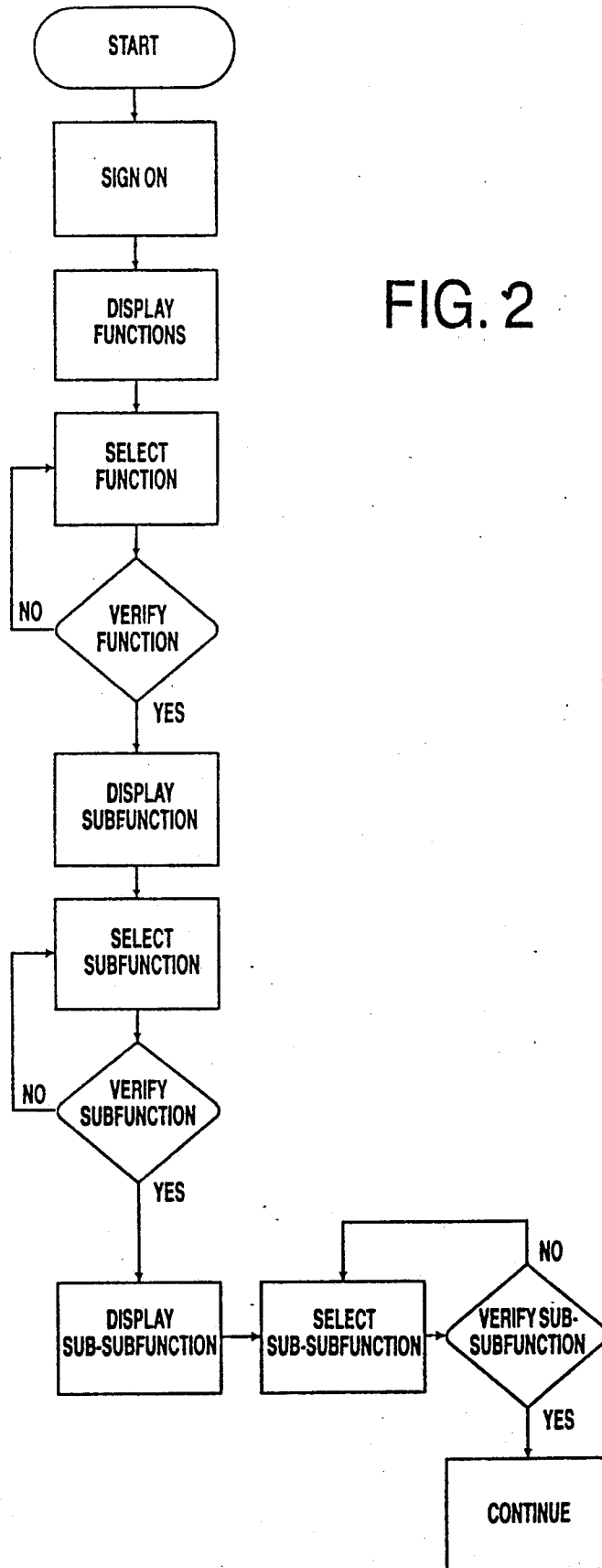
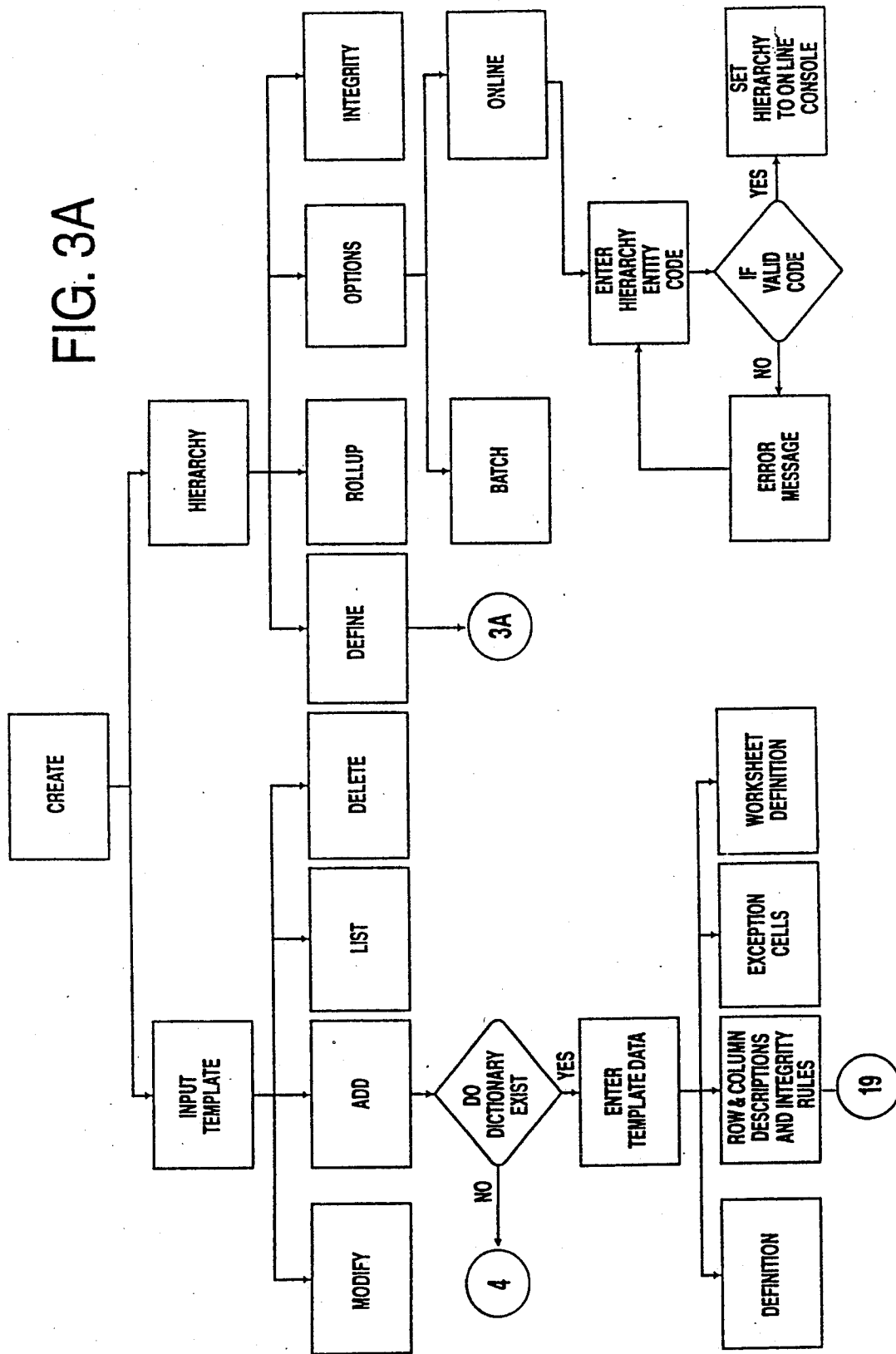


FIG. 3A



Explore Litigation Insights

Docket Alarm provides insights to develop a more informed litigation strategy and the peace of mind of knowing you're on top of things.

Real-Time Litigation Alerts



Keep your litigation team up-to-date with **real-time alerts** and advanced team management tools built for the enterprise, all while greatly reducing PACER spend.

Our comprehensive service means we can handle Federal, State, and Administrative courts across the country.

Advanced Docket Research



With over 230 million records, Docket Alarm's cloud-native docket research platform finds what other services can't. Coverage includes Federal, State, plus PTAB, TTAB, ITC and NLRB decisions, all in one place.

Identify arguments that have been successful in the past with full text, pinpoint searching. Link to case law cited within any court document via Fastcase.

Analytics At Your Fingertips



Learn what happened the last time a particular judge, opposing counsel or company faced cases similar to yours.

Advanced out-of-the-box PTAB and TTAB analytics are always at your fingertips.

API

Docket Alarm offers a powerful API (application programming interface) to developers that want to integrate case filings into their apps.

LAW FIRMS

Build custom dashboards for your attorneys and clients with live data direct from the court.

Automate many repetitive legal tasks like conflict checks, document management, and marketing.

FINANCIAL INSTITUTIONS

Litigation and bankruptcy checks for companies and debtors.

E-DISCOVERY AND LEGAL VENDORS

Sync your system to PACER to automate legal marketing.