



(19) **United States**

(12) **Patent Application Publication**
Zhao et al.

(10) **Pub. No.: US 2007/0140199 A1**
(43) **Pub. Date: Jun. 21, 2007**

(54) **POWER SAVING IN MULTI-PROCESSOR DEVICE**

(75) Inventors: **Wen Zhao**, Cupertino, CA (US); **David Kammer**, Seattle, WA (US); **Mark T. Davis**, Mill Valley, CA (US); **Arun G. Mathias**, Sunnyvale, CA (US); **Isabel Ge Mahe**, Los Altos, CA (US); **Bennett Chan**, Saratoga, CA (US); **Alex Yee Kit Ho**, Cupertino, CA (US)

Continuation-in-part of application No. 11/155,387, filed on Jun. 16, 2005, which is a continuation of application No. 10/083,044, filed on Feb. 25, 2002, now Pat. No. 6,943,667.

(60) Provisional application No. 60/455,178, filed on Mar. 16, 2003.

Publication Classification

(51) **Int. Cl.**
H04Q 7/24 (2006.01)
(52) **U.S. Cl.** **370/338**

Correspondence Address:
FOLEY & LARDNER LLP
777 EAST WISCONSIN AVENUE
MILWAUKEE, WI 53202-5306 (US)

(57) **ABSTRACT**

(73) Assignee: **Palm, Inc.**

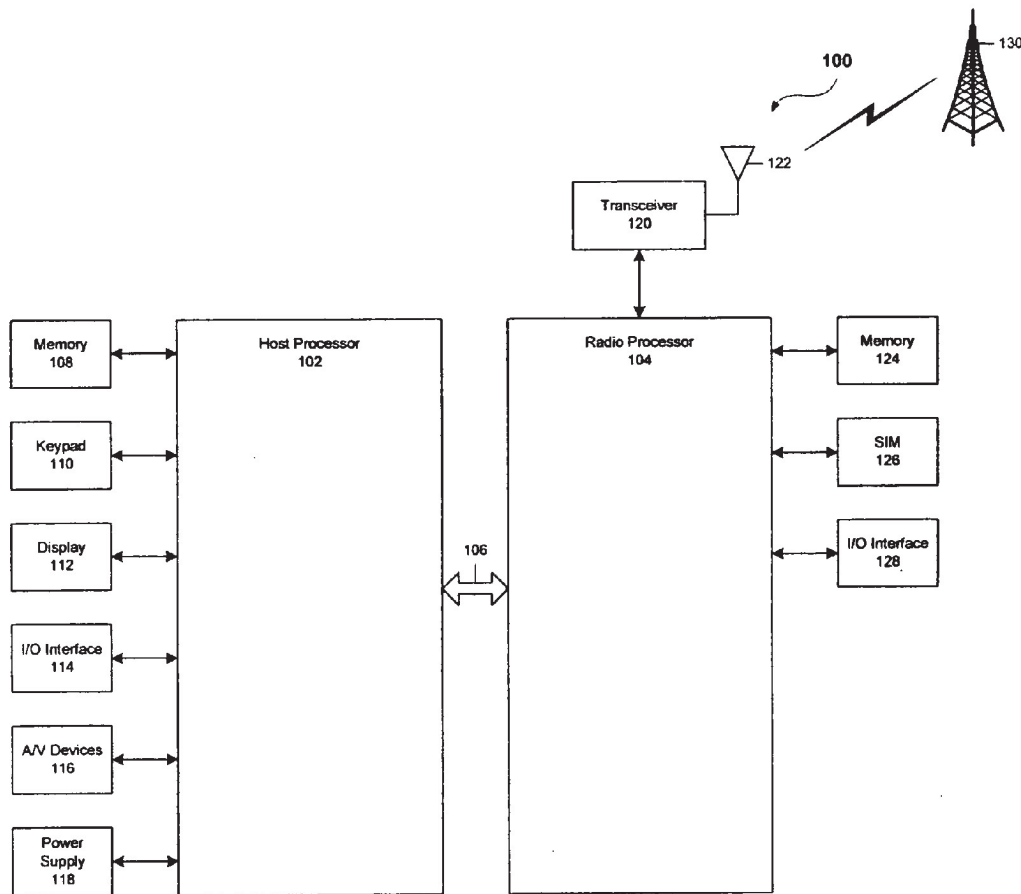
(21) Appl. No.: **11/634,366**

(22) Filed: **Dec. 5, 2006**

A mobile computing device comprises a first microprocessor having a sleep mode and a wake mode and a second microprocessor configured for wireless communication. A communication port is configured to communicate data from the second processor to the first processor, wherein the second processor is configured to provide a wake signal to the first microprocessor and the first microprocessor is configured to open the communication port in response to the wake signal and to receive data from the second microprocessor through the communication port.

Related U.S. Application Data

(63) Continuation-in-part of application No. 10/759,597, filed on Jan. 15, 2004.



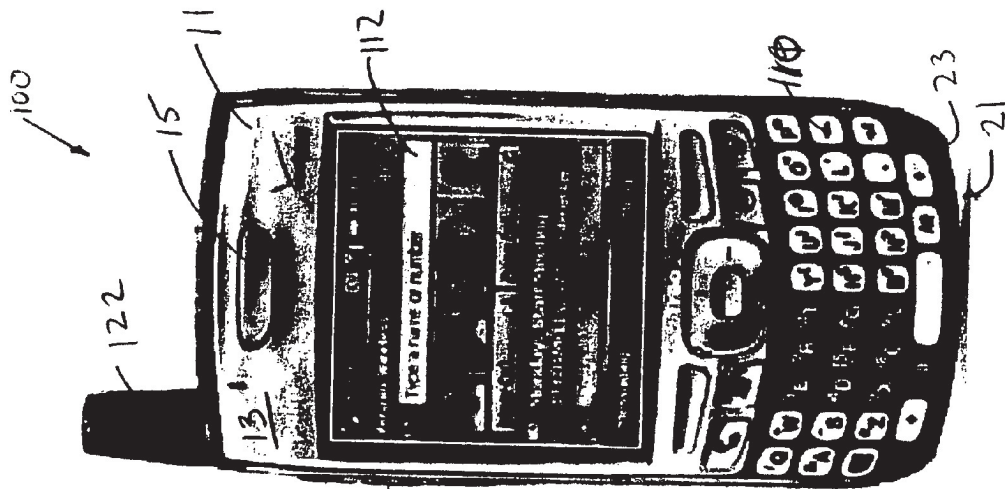


FIGURE 1

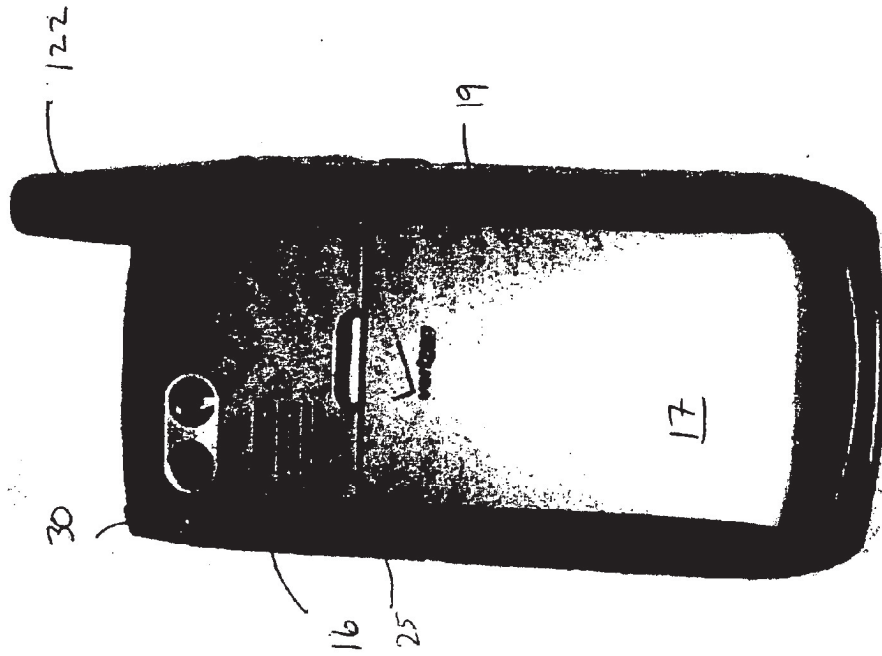


FIGURE 2

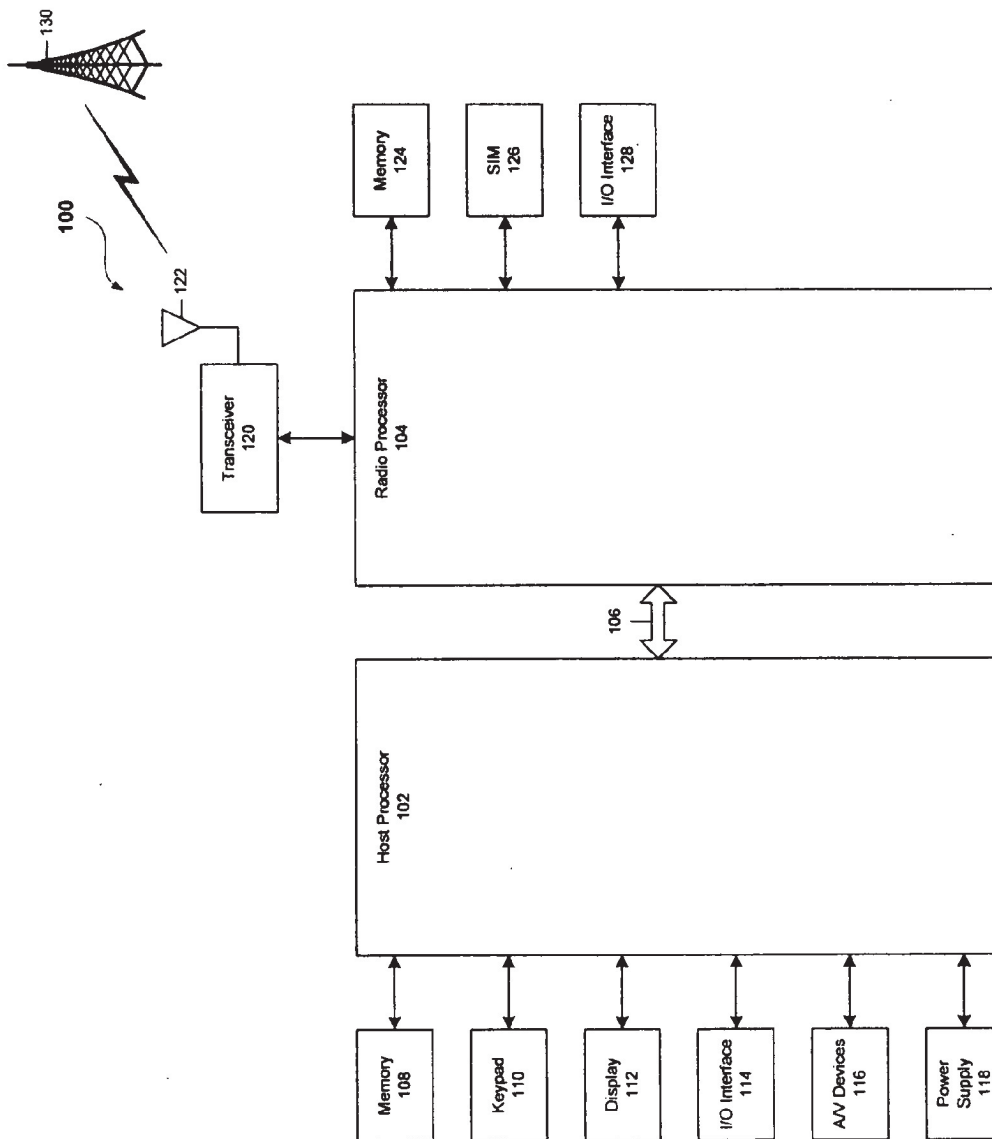


FIG. 3

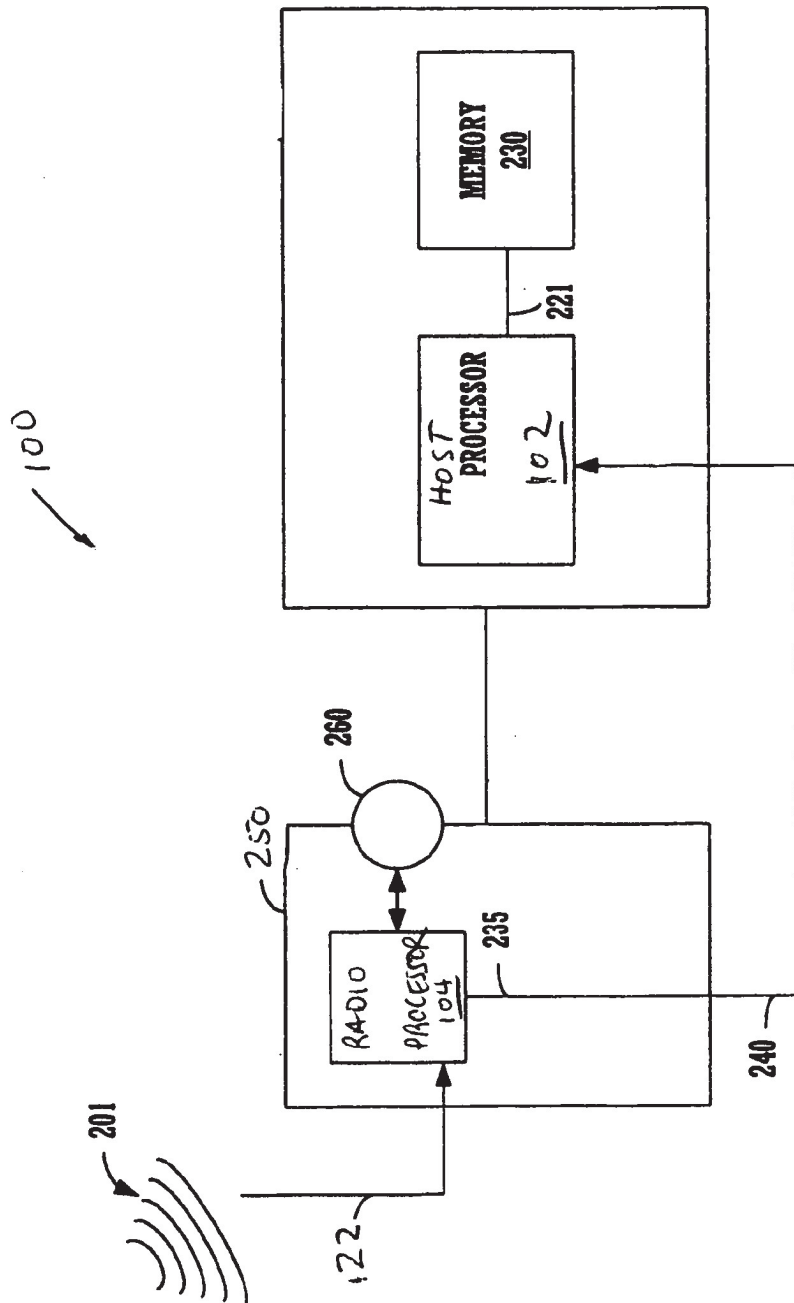


FIGURE 4

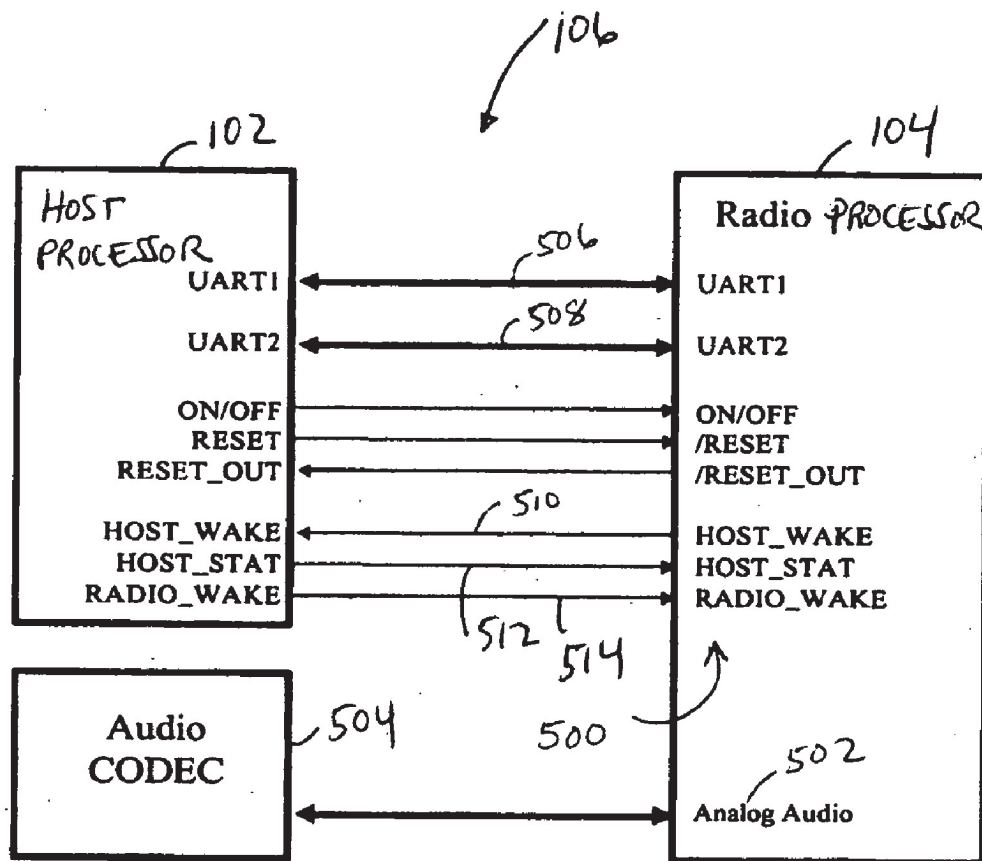


FIG. 5

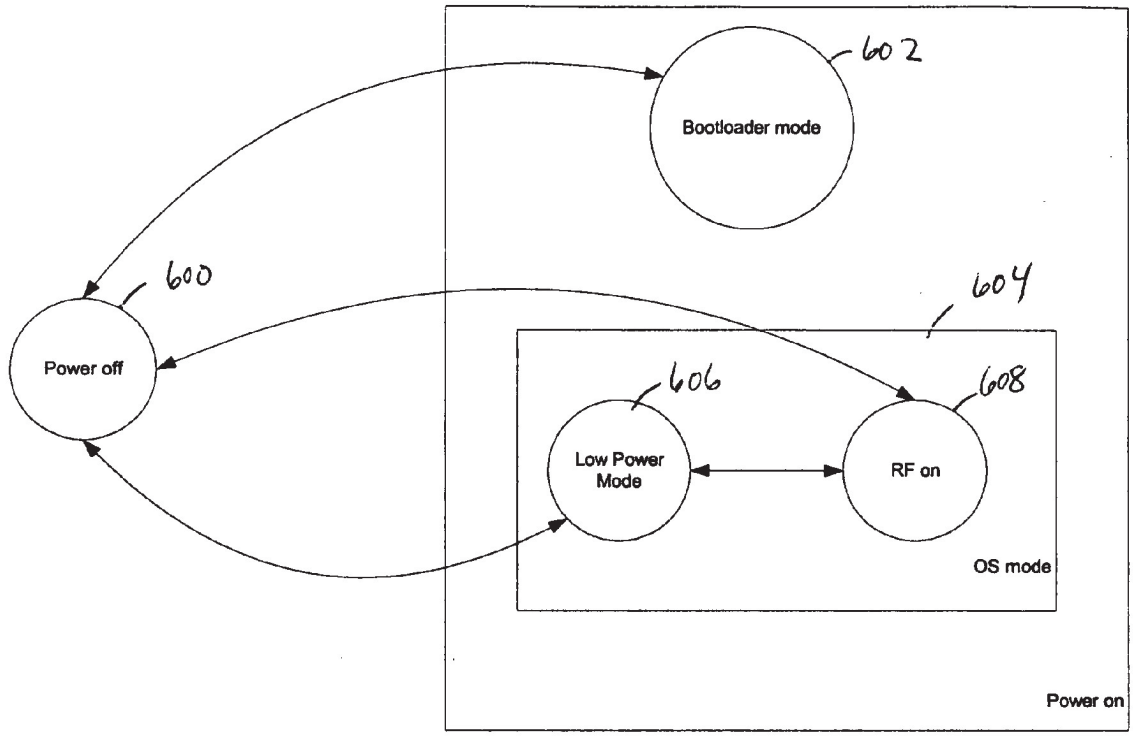


FIG. 6

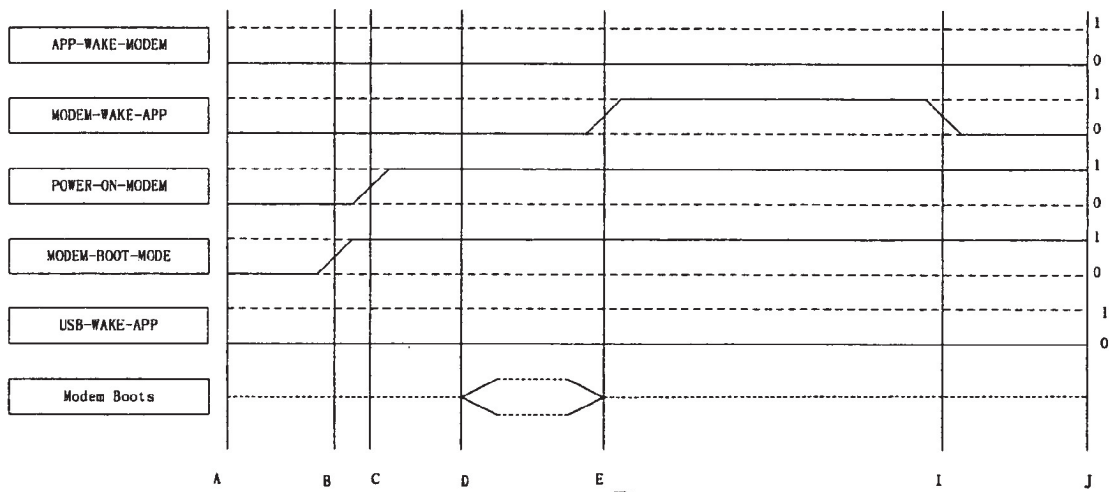


FIG. 7

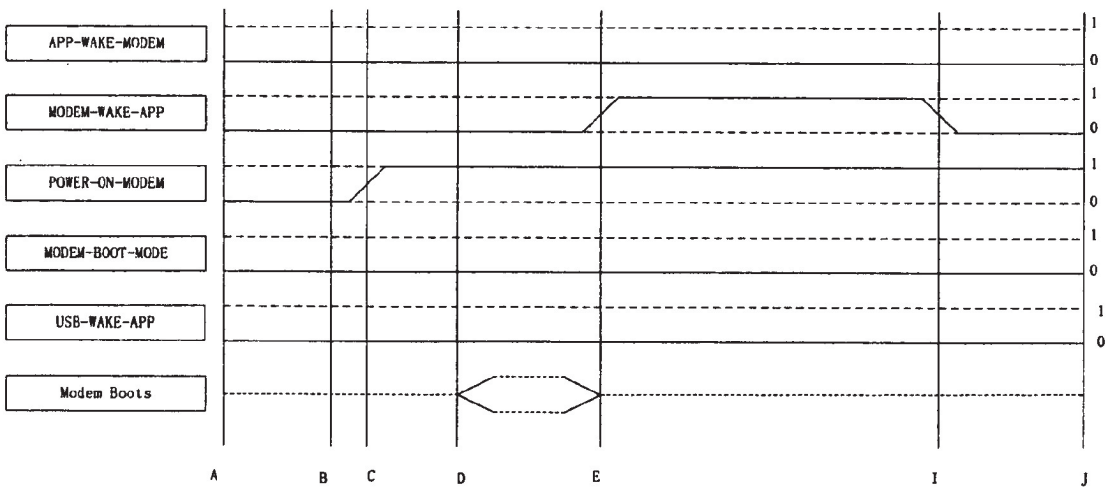


FIG. 8

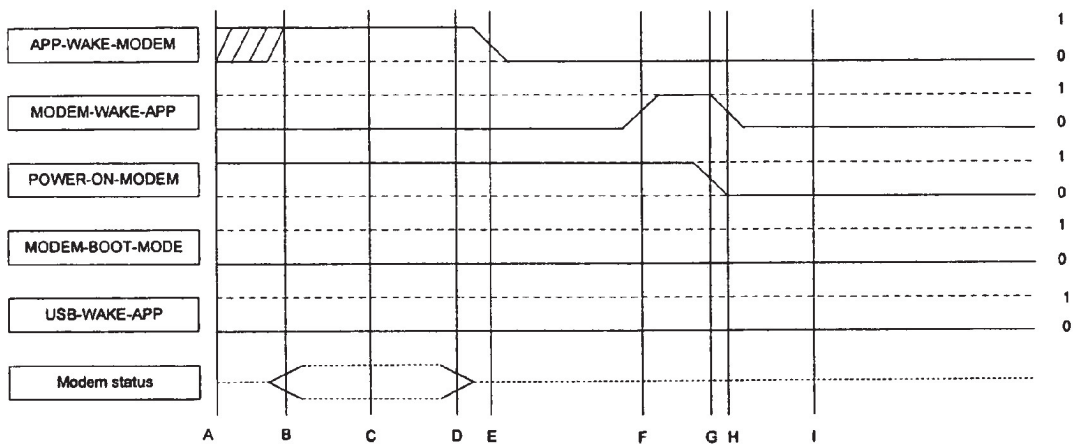


FIG. 9

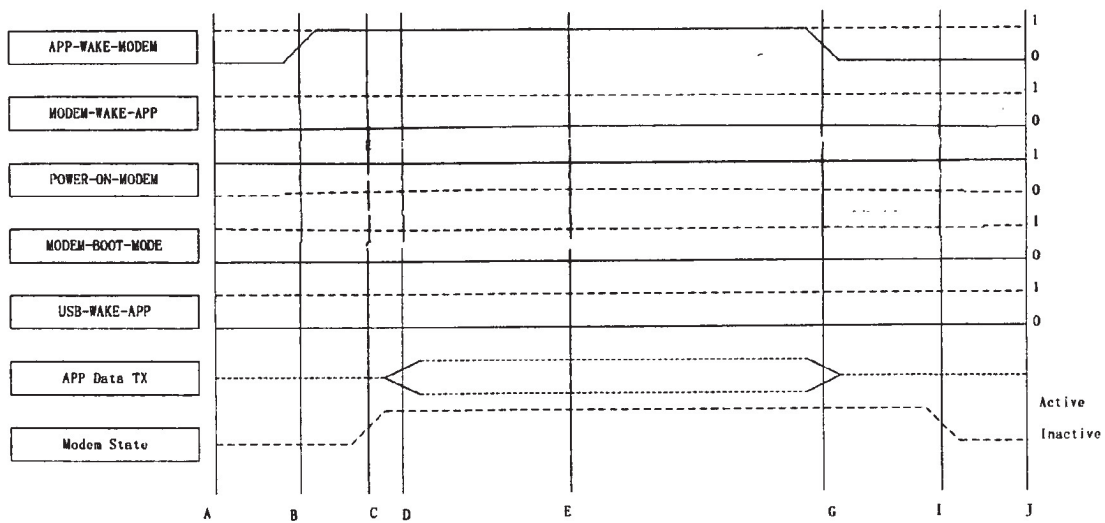


FIG. 10

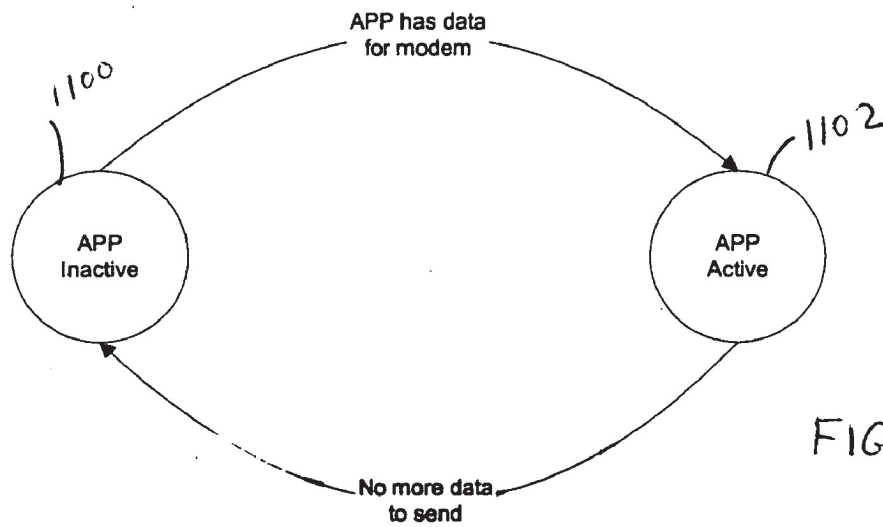


FIG. 11

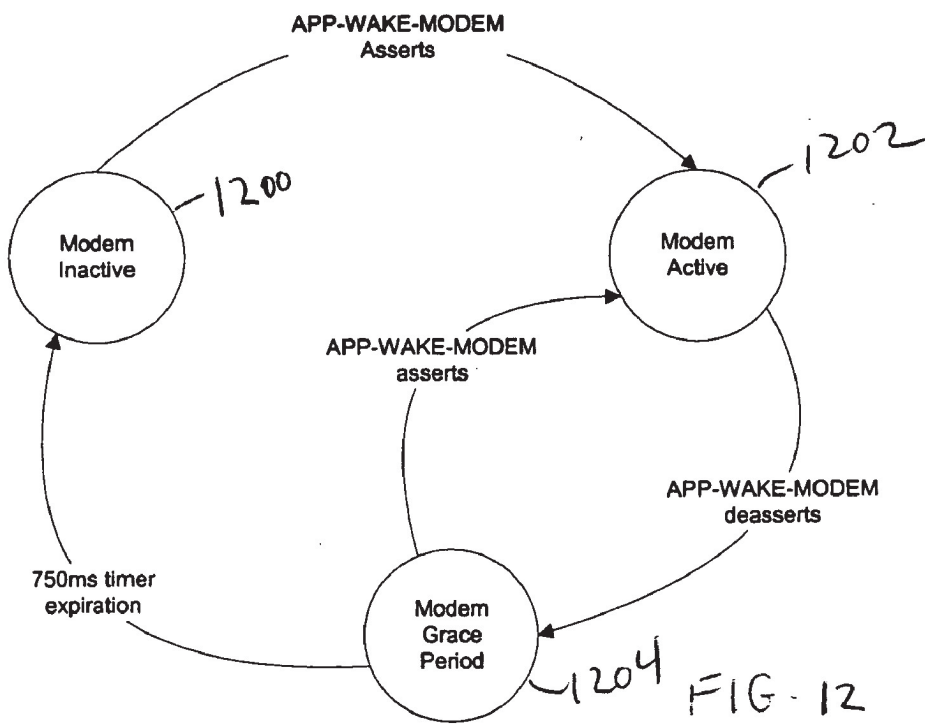


FIG. 12

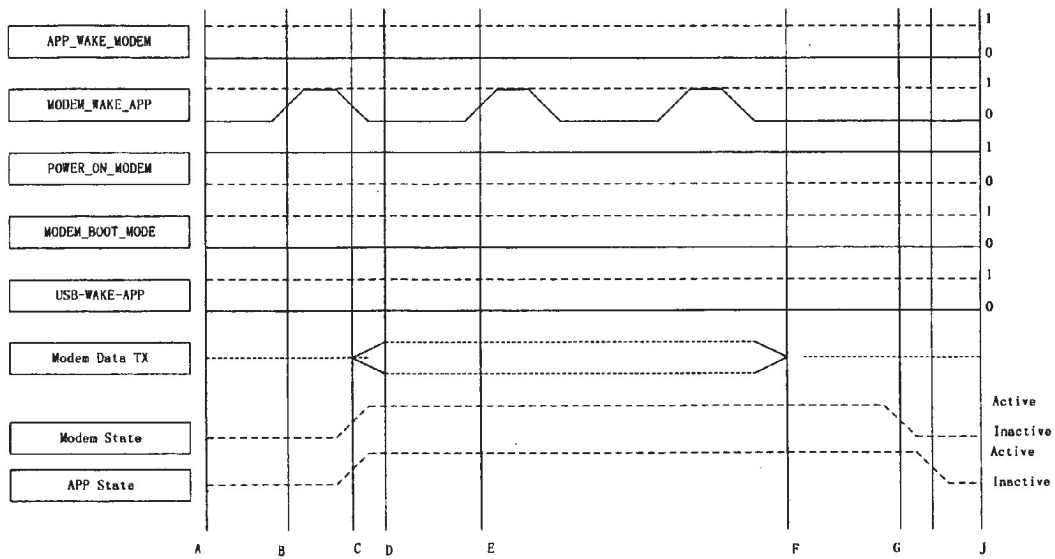


FIG. 13

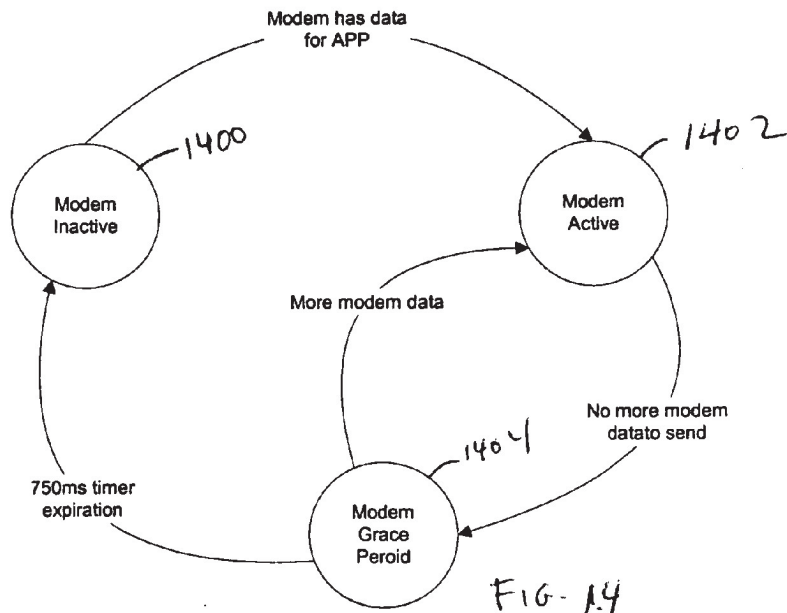
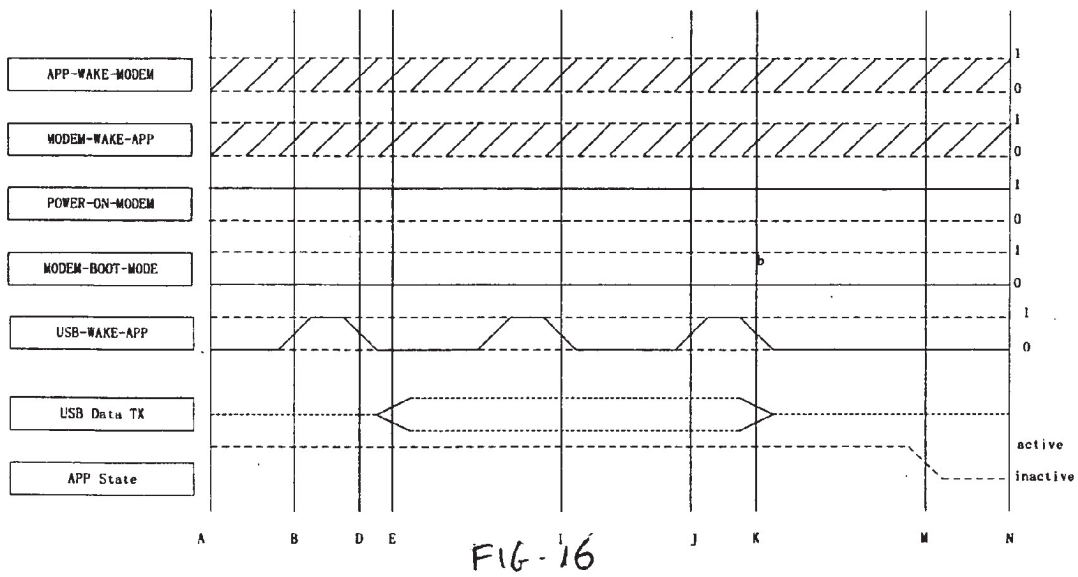
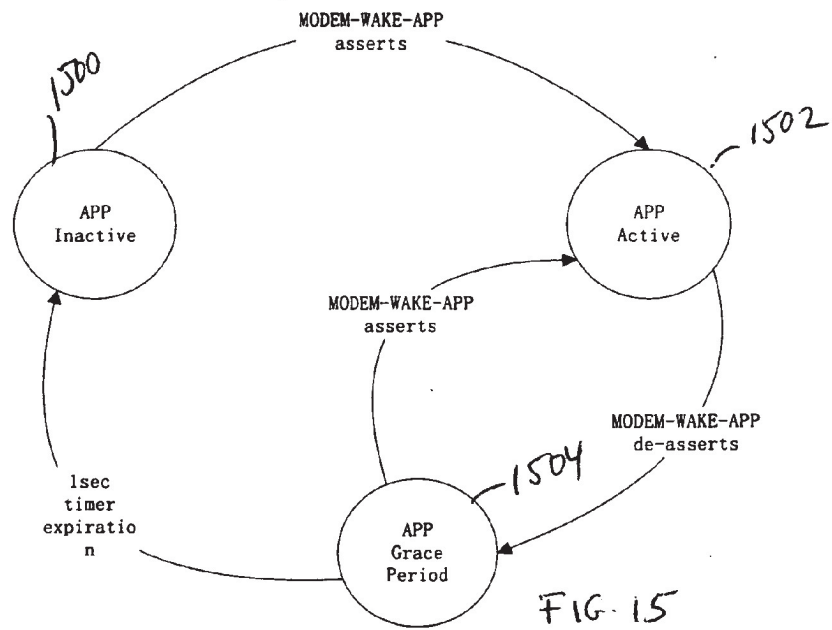


FIG. 14



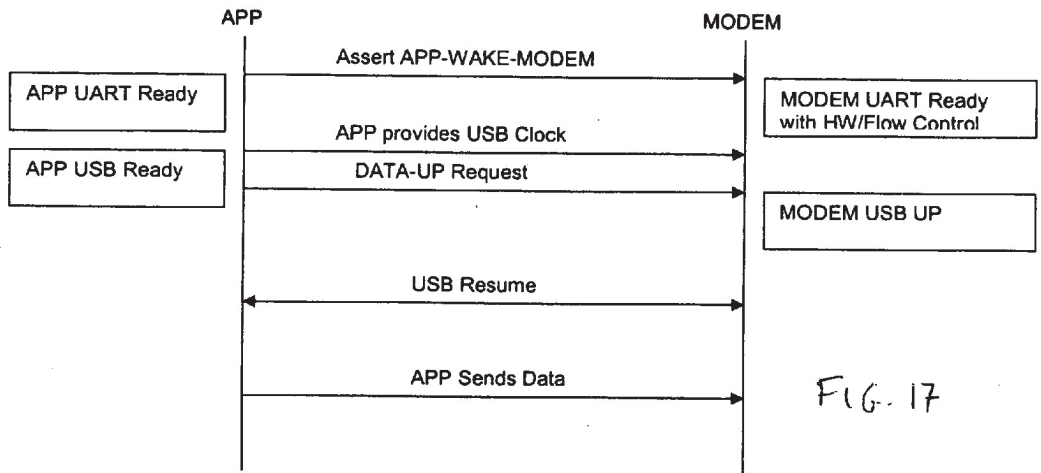


FIG. 17

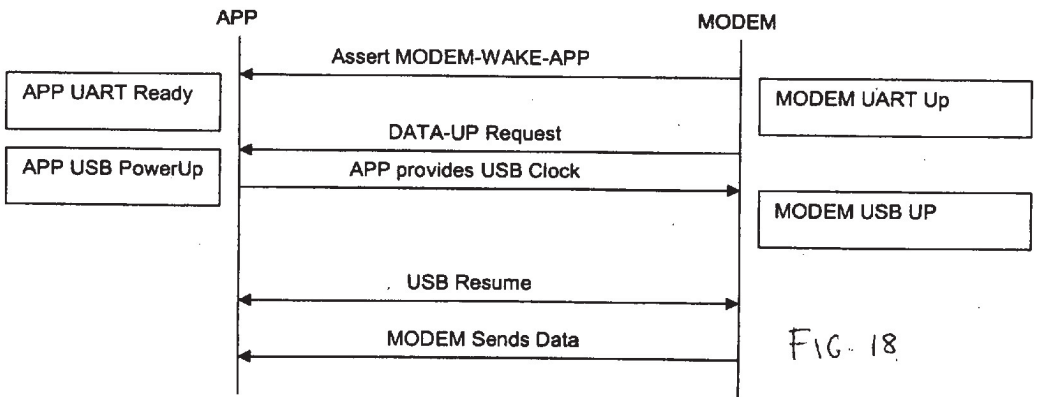


FIG. 18

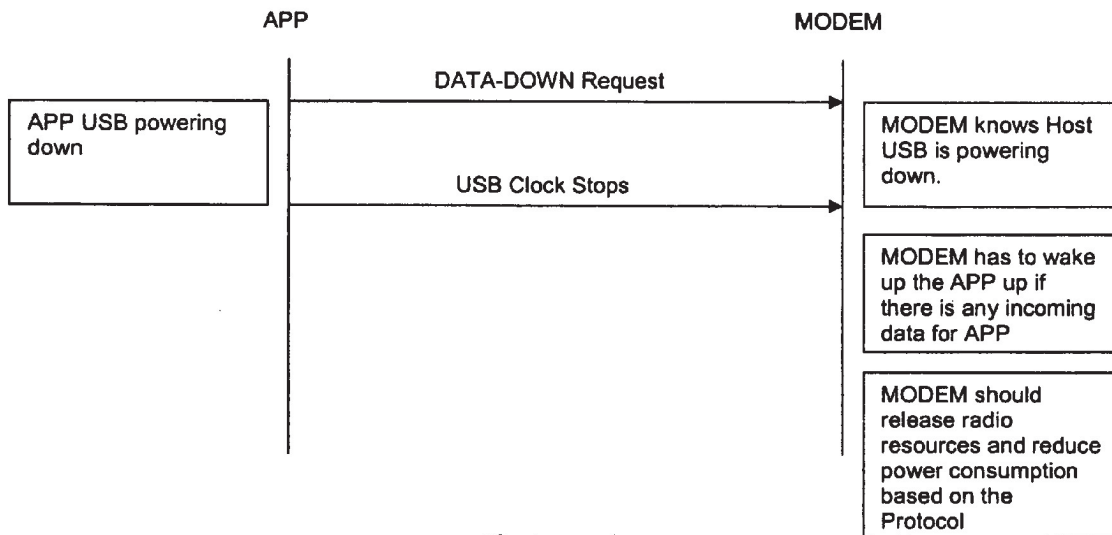


FIG. 19

POWER SAVING IN MULTI-PROCESSOR DEVICE

CROSS-REFERENCE TO RELATED PATENT APPLICATIONS

[0001] This application is a continuation-in-part of application Ser. No. 11/155,387 filed Jun. 16, 2005, which is a continuation of application Ser. No. 10/083,044 filed Feb. 25, 2002 and issued Sep. 13, 2005 as U.S. Pat. No. 6,943,667. This application is a continuation-in-part of application Ser. No. 10/759,597 filed Jan. 15, 2004, which claims the benefit of U.S. Provisional Application No. 60/455,178 filed Mar. 16, 2003.

BACKGROUND

[0002] Mobile computing devices are typically powered by batteries. Consumers who purchase mobile computing devices look for a device that can operate a long period of time without needing to recharge the battery. Therefore, there is a need to improve the power consumption of mobile computing devices.

[0003] Some mobile computing devices, such as smart phones, use two microprocessors: one for radio communication and one for running a variety of applications. Both microprocessors consume power, even though one microprocessor may be idle while the other microprocessor is running.

[0004] Accordingly, there is a need for improved systems and methods for reducing power consumption in a multi-processor mobile computing device. Further, there is a need for reducing power consumption in the communication of data between a plurality of processors in a multi-processor mobile computing device. Further still, there is a need for reducing power consumption in a mobile computing device operating over a wireless communication link having a server time-out feature.

[0005] The teachings herein extend to those embodiments which are within the scope of the appended claims, regardless of whether they accomplish one or more of the above-mentioned needs.

BRIEF DESCRIPTION OF THE DRAWINGS

[0006] FIG. 1 is a front view of a mobile computing device, according to an exemplary embodiment;

[0007] FIG. 2 is a back view of a mobile computing device, according to an exemplary embodiment;

[0008] FIG. 3 is a block diagram of the mobile computing device of FIGS. 1 and 2, according to an exemplary embodiment;

[0009] FIG. 4 is a block diagram illustrating a system and method for limiting power consumption, according to an exemplary embodiment;

[0010] FIG. 5 is a schematic diagram illustrating communication lines between a plurality of processors, according to an exemplary embodiment;

[0011] FIG. 6 is a state diagram illustrating modem states and state transitions, according to an exemplary embodiment;

[0012] FIG. 7 is a signaling diagram illustrating a power on to bootloader mode, according to an exemplary embodiment;

[0013] FIG. 8 is a signaling diagram illustrating a power on to operating system mode, according to an exemplary embodiment;

[0014] FIG. 9 is a signaling diagram illustrating a power off mode, according to an exemplary embodiment;

[0015] FIG. 10 is a signaling diagram illustrating a host processor initiates communication mode, according to an exemplary embodiment;

[0016] FIG. 11 is a state diagram illustrating a host processor wakes radio processor data flow from the host processor side, according to an exemplary embodiment;

[0017] FIG. 12 is a state diagram illustrating a host processor wakes radio processor data flow from the radio processor side, according to an exemplary embodiment;

[0018] FIG. 13 is a signaling diagram illustrating a radio processor initiates communication mode, according to an exemplary embodiment;

[0019] FIG. 14 is a state diagram illustrating a radio processor wakes host processor data flow from the radio processor side, according to an exemplary embodiment;

[0020] FIG. 15 is a state diagram illustrating a radio processor wakes host processor data flow from the host processor side, according to an exemplary embodiment;

[0021] FIG. 16 is a signaling diagram illustrating a universal serial bus controller wakeup mode, according to an exemplary embodiment;

[0022] FIG. 17 is a flow diagram illustrating a universal serial bus controller wakeup mode, according to an exemplary embodiment;

[0023] FIG. 18 is a flow diagram illustrating a universal serial bus controller wakeup mode, according to an exemplary embodiment; and

[0024] FIG. 19 is a flow diagram illustrating a universal serial bus controller sleep mode, according to an exemplary embodiment.

DETAILED DESCRIPTION OF THE EXEMPLARY EMBODIMENTS

[0025] Application Ser. No. 11/155,387 filed Jun. 16, 2005, application Ser. No. 10/083,044 filed Feb. 25, 2002 and issued Sep. 13, 2005 as U.S. Pat. No. 6,943,667, application Ser. No. 10/759,597 filed Jan. 15, 2004, U.S. Provisional application No. 60/455,178 filed Mar. 16, 2003, and application Ser. No. 11/469,374 filed Aug. 31, 2006 are all incorporated by reference herein in their entirety.

[0026] Referring first to FIG. 1, a mobile computing device 100 is shown. Device 100 is a smart phone, which is a combination mobile telephone and handheld computer having personal digital assistant functionality. The teachings herein can be applied to other mobile computing devices (e.g., a laptop computer) or other electronic devices (e.g., a desktop personal computer, home or car audio system, etc.). Personal digital assistant functionality can comprise one or more of personal information management, database func-

tions, word processing, spreadsheets, voice memo recording, etc. and is configured to synchronize personal information from one or more applications with a computer (e.g., desktop, laptop, server, etc.). Device **100** is further configured to receive and operate additional applications provided to device **100** after manufacture, e.g., via wired or wireless download, SecureDigital card, etc.

[0027] Earpiece speaker **15** may be a speaker configured to provide audio output with a volume suitable for a user placing earpiece speaker **15** against or near the ear. Loudspeaker **16** is an electro-acoustic transducer that converts electrical signals into sounds loud enough to be heard at a distance. Loudspeaker **16** can be used for a speakerphone functionality. Device **100** comprises a housing **11** having a front side **13** and a back side **17** (FIG. 2). In alternative embodiments, display **112**, user input device **110**, earpiece speaker **15** and loudspeaker **16** may each be positioned anywhere on front side **13**, back side **17** or the edges therebetween.

[0028] Mobile computing device **100** may provide voice communications functionality in accordance with different types of cellular radiotelephone systems. Examples of cellular radiotelephone systems may include Code Division Multiple Access (CDMA) cellular radiotelephone communication systems, Global System for Mobile Communications (GSM) cellular radiotelephone systems, etc.

[0029] In addition to voice communications functionality, the mobile computing device **100** may be arranged to provide data communications functionality in accordance with different types of cellular radiotelephone systems. Examples of cellular radiotelephone systems offering data communications services may include GSM with General Packet Radio Service (GPRS) systems (GSM/GPRS), CDMA/1xRTT systems, Enhanced Data Rates for Global Evolution (EDGE) systems, Evolution Data Only or Evolution Data Optimized (EV-DO) systems, etc.

[0030] The mobile computing device **100** may be arranged to provide voice and/or data communications functionality in accordance with different types of wireless network systems. Examples of wireless network systems may include a wireless local area network (WLAN) system, wireless metropolitan area network (WMAN) system, wireless wide area network (WWAN) system, and so forth. Examples of suitable wireless network systems offering data communication services may include the Institute of Electrical and Electronics Engineers (IEEE) 802.xx series of protocols, such as the IEEE 802.11a/b/g/n series of standard protocols and variants (also referred to as "WiFi"), the IEEE 802.16 series of standard protocols and variants (also referred to as "WiMAX"), the IEEE 802.20 series of standard protocols and variants, and so forth.

[0031] The mobile computing device **100** may be arranged to perform data communications in accordance with different types of shorter range wireless systems, such as a wireless personal area network (PAN) system. One example of a suitable wireless PAN system offering data communication services may include a Bluetooth system operating in accordance with the Bluetooth Special Interest Group (SIG) series of protocols, including Bluetooth Specification versions v1.0, v1.1, v1.2, v2.0, v2.0 with Enhanced Data Rate (EDR), as well as one or more Bluetooth Profiles, and so forth.

[0032] As shown in the embodiment of FIG. 3, mobile computing device **100** may comprise a dual processor architecture including a host processor **102** and a radio processor **104** (e.g., a base band processor). The host processor **102** and the radio processor **104** may be arranged to communicate with each other using interfaces **106** such as one or more universal serial bus (USB) interfaces, micro-USB interfaces, universal asynchronous receiver-transmitter (UART) interfaces, general purpose input/output (GPIO) interfaces, control/status lines, control/data lines, shared memory, and so forth.

[0033] The host processor **102** may be responsible for executing various software programs such as application programs and system programs to provide computing and processing operations for the mobile computing device **100**. The radio processor **104** may be responsible for performing various voice and data communications operations for the mobile computing device **100** such as transmitting and receiving voice and data information over one or more wireless communications channels. Although embodiments of the dual processor architecture may be described as comprising the host processor **102** and the radio processor **104** for purposes of illustration, it is worthy to note that the dual processor architecture of the mobile computing device **100** may comprise additional processors, may be implemented as a dual- or multi-core chip with both host processor **102** and radio processor **104** on a single chip, etc.

[0034] In various embodiments, the host processor **102** may be implemented as a host central processing unit (CPU) using any suitable processor or logic device, such as a general purpose processor. The host processor **102** may comprise, or be implemented as, a chip multiprocessor (CMP), dedicated processor, embedded processor, media processor, input/output (I/O) processor, co-processor, a field programmable gate array (FPGA), a programmable logic device (PLD), or other processing device in alternative embodiments. In an exemplary embodiment, host processor **102** is an OMAP2, such as an OMAP2431 processor, manufactured by Texas Instruments, Inc.

[0035] The host processor **102** may be arranged to provide processing or computing resources to the mobile computing device **100**. For example, the host processor **102** may be responsible for executing various software programs such as application programs and system programs to provide computing and processing operations for the mobile computing device **100**. Examples of application programs may include, for example, a telephone application, voicemail application, e-mail application, instant message (IM) application, short message service (SMS) application, multimedia message service (MMS) application, web browser application, personal information manager (PIM) application, contact management application, calendar application, scheduling application, task management application, word processing application, spreadsheet application, database application, video player application, audio player application, multimedia player application, digital camera application, video camera application, media management application, a gaming application, and so forth. The application software may provide a graphical user interface (GUI) to communicate information between the mobile computing device **100** and a user.

[0036] System programs assist in the running of a computer system. System programs may be directly responsible

for controlling, integrating, and managing the individual hardware components of the computer system. Examples of system programs may include, for example, an operating system (OS), device drivers, programming tools, utility programs, software libraries, an application programming interface (API), graphical user interface (GUI), and so forth. The mobile computing device **100** may utilize any suitable OS in accordance with the described embodiments such as a Palm OS®, Palm OS® Cobalt, Microsoft® Windows OS, Microsoft Windows® CE, Microsoft Pocket PC, Microsoft Mobile, Symbian OS™, Embedix OS, Linux, Binary Runtime Environment for Wireless (BREW) OS, JavaOS, a Wireless Application Protocol (WAP) OS, and so forth.

[0037] The mobile computing device **100** may comprise a memory **108** coupled to the host processor **102**. In various embodiments, the memory **108** may be arranged to store one or more software programs to be executed by the host processor **102**. The memory **108** may be implemented using any machine-readable or computer-readable media capable of storing data such as volatile memory or non-volatile memory, removable or non-removable memory, erasable or non-erasable memory, writeable or re-writeable memory, and so forth. Examples of machine-readable storage media may include, without limitation, random-access memory (RAM), dynamic RAM (DRAM), Double-Data-Rate DRAM (DDRAM), synchronous DRAM (SDRAM), static RAM (SRAM), read-only memory (ROM), programmable ROM (PROM), erasable programmable ROM (EPROM), electrically erasable programmable ROM (EEPROM), flash memory (e.g., NOR or NAND flash memory), or any other type of media suitable for storing information.

[0038] Although the memory **108** may be shown as being separate from the host processor **102** for purposes of illustration, in various embodiments some portion or the entire memory **108** may be included on the same integrated circuit as the host processor **102**. Alternatively, some portion or the entire memory **108** may be disposed on an integrated circuit or other medium (e.g., hard disk drive) external to the integrated circuit of host processor **102**. In various embodiments, the mobile computing device **100** may comprise an expansion slot to support a multimedia and/or memory card, for example.

[0039] The mobile computing device **100** may comprise a user input device **110** coupled to the host processor **102**. User input device **110** may comprise, for example, a QWERTY key layout and an integrated number dial pad. The mobile computing device **100** also may comprise various keys, buttons, keypad, alphanumeric keypad, and switches such as, for example, input keys, preset and programmable hot keys, left and right action buttons, a navigation button such as a multidirectional navigation button, phone/send and power/end buttons, preset and programmable shortcut buttons, a volume rocker switch, a ringer on/off switch having a vibrate mode, and so forth.

[0040] The host processor **102** may be coupled to a display **112**. The display **112** may comprise any suitable visual interface for displaying content to a user of the mobile computing device **100**. For example, the display **112** may be implemented by a liquid crystal display (LCD) such as a touch-sensitive color (e.g., 16-bit color) thin-film transistor (TFT) LCD screen. In some embodiments, the touch-sensitive LCD may be used with a stylus and/or a handwriting recognizer program.

[0041] The mobile computing device **100** may comprise an input/output (I/O) interface **114** coupled to the host processor **102**. The I/O interface **114** may comprise one or more I/O devices such as a serial connection port, an infrared port, integrated Bluetooth® wireless capability, and/or integrated 802.11x (WiFi) wireless capability, to enable wired (e.g., USB cable) and/or wireless connection to a local computer system, such as a local personal computer (PC). In various implementations, mobile computing device **100** may be arranged to transfer and/or synchronize information with the local computer system.

[0042] The host processor **102** may be coupled to various audio/video (A/V) devices **116** that support A/V capability of the mobile computing device **100**. Examples of A/V devices **116** may include, for example, a microphone, one or more speakers, an audio port to connect an audio headset, an audio coder/decoder (codec), an audio player, a digital camera, a video camera, a video codec, a video player, and so forth.

[0043] The host processor **102** may be coupled to a power supply **118** arranged to supply and manage power to the elements of the mobile computing device **100**. In various embodiments, the power supply **118** may be implemented by a rechargeable battery, such as a removable and rechargeable lithium ion battery to provide direct current (DC) power, and/or an alternating current (AC) adapter to draw power from a standard AC main power supply.

[0044] As mentioned above, the radio processor **104** may perform voice and/or data communication operations for the mobile computing device **100**. For example, the radio processor **104** may be arranged to communicate voice information and/or data information over one or more assigned frequency bands of a wireless communication channel. In various embodiments, the radio processor **104** may be implemented as a communications processor using any suitable processor or logic device, such as a modem processor or baseband processor. Although some embodiments may be described with the radio processor **104** implemented as a modem processor or baseband processor by way of example, it may be appreciated that the embodiments are not limited in this context. For example, the radio processor **104** may comprise, or be implemented as, a digital signal processor (DSP), media access control (MAC) processor, or any other type of communications processor in accordance with the described embodiments. Radio processor **104** may be any of a plurality of modems manufactured by Qualcomm, Inc.

[0045] In various embodiments, the radio processor **104** may perform analog and/or digital baseband operations for the mobile computing device **100**. For example, the radio processor **104** may perform digital-to-analog conversion (DAC), analog-to-digital conversion (ADC), modulation, demodulation, encoding, decoding, encryption, decryption, and so forth.

[0046] The mobile computing device **100** may comprise a transceiver module **120** coupled to the radio processor **104**. The transceiver module **120** may comprise one or more transceivers arranged to communicate using different types of protocols, communication ranges, operating power requirements, RF sub-bands, information types (e.g., voice or data), use scenarios, applications, and so forth. In various embodiments, the transceiver module **120** may comprise one

or more transceivers arranged to support voice communication for a cellular radiotelephone system such as a GSM, UMTS, and/or CDMA system. The transceiver module **120** also may comprise one or more transceivers arranged to perform data communications in accordance with one or more wireless communications protocols such as WWAN protocols (e.g., GSM/GPRS protocols, CDMA/1xRTT protocols, EDGE protocols, EV-DO protocols, EV-DV protocols, HSDPA protocols, etc.), WLAN protocols (e.g., IEEE 802.11a/b/g/n, IEEE 802.16, IEEE 802.20, etc.), PAN protocols, Infrared protocols, Bluetooth protocols, EMI protocols including passive or active RFID protocols, and so forth.

[0047] The transceiver module **120** may be implemented using one or more chips as desired for a given implementation. Although the transceiver module **120** may be shown as being separate from and external to the radio processor **104** for purposes of illustration, it is worthy to note that in various embodiments some portion or the entire transceiver module **120** may be included on the same integrated circuit as the radio processor **104**. The embodiments are not limited in this context.

[0048] The mobile computing device **100** may comprise an antenna system **122** for transmitting and/or receiving electrical signals. As shown, the antenna system **122** may be coupled to the radio processor **104** through the transceiver module **120**. The antenna system **122** may comprise or be implemented as one or more internal antennas and/or external antennas.

[0049] The mobile computing device **100** may comprise a memory **124** coupled to the radio processor **104**. The memory **124** may be implemented using one or more types of machine-readable or computer-readable media capable of storing data such as volatile memory or non-volatile memory, removable or non-removable memory, erasable or non-erasable memory, writeable or re-writable memory, and so forth. The memory **124** may comprise, for example, flash memory and secure digital (SD) RAM. Although the memory **124** may be shown as being separate from and external to the radio processor **104** for purposes of illustration, it is worthy to note that in various embodiments some portion or the entire memory **124** may be included on the same integrated circuit as the radio processor **104**.

[0050] The mobile computing device **100** may comprise a subscriber identity module (SIM) **126** coupled to the radio processor **104**. The SIM **126** may comprise, for example, a removable or non-removable smart card arranged to encrypt voice and data transmissions and to store user-specific data for allowing a voice or data communications network to identify and authenticate the user. The SIM **126** also may store data such as personal settings specific to the user.

[0051] The mobile computing device **100** may comprise an I/O interface **128** coupled to the radio processor **104**. The I/O interface **128** may comprise one or more I/O devices to enable wired (e.g., serial, cable, etc.) and/or wireless (e.g., WiFi, short range, etc.) communication between the mobile computing device **100** and one or more external computer systems.

[0052] Referring now to FIG. 4, an exemplary system and method for limiting power consumption will be described. In some embodiments herein, the process of limiting power

consumption may be referred to as a “handshaking” feature, in which at least one of host processor **102** and radio processor **104** is configured to control the other from a wake to sleep or sleep to wake state. Handshaking may refer to the ability of two or more processors to sleep independent of each other, and may be provided in any of a number of embodiments, some of which will be described herein. It is advantageous to allow each processor to move to a sleep state when it has no tasks, even though the other processor is still processing tasks. Each processor is provided with the ability to wake the other when communication between the two is needed (e.g., via UART, USB or shared memory).

[0053] Host processor **102** can be placed in a sleep mode or a wake mode. In a sleep mode, host processor **102** is capable of performing certain activities such as keeping memory refreshed or periodically waking up; however, during the sleep mode host processor **102** does not perform to its full capability. Maintaining a microprocessor in a sleep mode is generally desired for energy conservation.

[0054] Radio circuit **250** comprises antenna **122**, radio processor **104**, and a communication port **260** (e.g., serial port, universal serial bus, universal asynchronous receiver transmitter, etc.). In one embodiment, radio circuit **250** may monitor wireless traffic received over antenna **122** while host microprocessor **102** is in the sleep mode. Radio circuit **250** continuously scans a set of defined frequencies (e.g., page scan in Bluetooth standard) for an in-bound signal.

[0055] A remote device (e.g., a transmitting electronic device, not shown) transmits a signal to mobile computing device **100**. The transmitted signal may be an out of band signal requesting a connection. Radio circuit **250** scanning for in-bound signals detects signal **201** transmitted by the transmitting electronic device.

[0056] The signal transmitted by the transmitting electronic device requests a connection and may not contain user data. Antenna **122** coupled to radio processor **104** receives signal **201** (e.g., incoming connection request) and transmits an interaction to radio processor **104**, where radio processor **104**, having a certain processing capability, determines if the signal is a connection attempt. Radio processor **104** coupled to communication port **260**, determines: a) if communication port **260** is closed; and b) if signal **201** is transmitted by a trusted device.

[0057] In case communication port **260** is closed and signal **201** is from a trusted device, radio processor **104** toggles an outside line **235**, which is coupled to an interrupt mechanism (not shown), causing the generation of an interrupt signal. Generation of the interrupt signal may be done in accordance with an extension of the communication protocol (e.g., Bluetooth specification) which allows radio circuit **250** to select a line coupled to the interrupt mechanism and toggle the line if communication port **260** is closed. Accordingly, when communication port **260** is closed, the outside line is toggled and the interrupt mechanism generates an interrupt signal. The interrupt signal is then transmitted to host processor **102** via interrupt line **240** causing host processor **102** to wake up to its full operational capability. An interrupt vector including different communication protocols (e.g., Bluetooth, IR, etc.) resides in the operating system (not shown) of host processor **102**. Host processor **102**, responding to the interrupt signal, sends a command to its operating system to invoke an appropriate

communication protocol (e.g., Bluetooth, IR, etc.). Accordingly, a communication protocol is invoked and causes communication port 260 to open and receive data signal 201.

[0058] If the port 260 was already open when the message was received, the interrupt signal is still generated to wake the host processor 102. Once awakened, it receives the message from the open port.

[0059] The interrupt signal wakes the host processor 102, which opens the communication port 260, and data information is received. Advantageously, the communication port can be shut down when not in use thereby saving power.

[0060] Referring now to FIG. 5, another exemplary system and method for limiting power consumption will be described. FIG. 5 is a schematic diagram illustrating communication lines between a plurality of processors, according to an exemplary embodiment. As can be seen, a plurality of digital serial ports and control signals 500 of radio processor 104 are coupled to host processor 102. Analog audio signals 502 are coupled to audio CODEC 504 for routing to microphones, speakers, or host processor 102. In one exemplary embodiment, UART1506 may be used for multiplexed control and data. UART2508 may be used for debug information during development. In an alternative embodiment, UART1506 may be used for command and diagnostics information and UART2508 may be used for data calls.

[0061] In the system of FIG. 5, a plurality of signals are used to control power management functions between host processor 102 and radio processor 104.

[0062] RESET/ON-OFF (ON/OFF, RADIO_RESET~, RESET_OUT~)

[0063] ON/OFF—This active high input signal turns radio processor 104 on and off. A high level on this pin will turn on radio processor 104 and boot host processor 102. A low level on this pin will force radio processor 104 off immediately, rather than into a graceful shutdown. The graceful shutdown will be accomplished via a software command before the ON/OFF pin is driven low.

[0064] RADIO_RESET~—The active low input pin is the master reset for radio processor 104. This pin will need to be driven low and then high in order to accomplish a full radio reset.

[0065] RESET_OUT~—This signal is an output from a CDMA radio processor 104, and indicates that CDMA radio processor 104 is in RESET and requires initialization.

[0066] HANDSHAKE (HOST_WAKE, RADIO_WAKE, HOST_STATUS)

[0067] HOST_WAKE 510—Radio processor 104 drives this active high signal to host processor 102 when it wants to wake up host processor 102 to send a message. In addition, when host processor 102 wakes up radio processor 104, this signal is used to acknowledge the RADIO_WAKE signal from host processor 102. This signal should remain high as long as messages are pending from radio processor 104 or as long as host processor 102 has requested radio processor 104 to be turned on.

[0068] RADIO_WAKE 514—Host processor 102 drives this active high signal to radio processor 104 when it wants to wake up radio processor 104 to send a message. In addition, when radio processor 104 wakes up host processor 102, this signal is used to acknowledge the HOST_WAKE signal from radio processor 104. This signal should remain high as long as messages are pending from host processor 102 or as long as radio processor 104 has requested host processor 102 to be turned on.

[0069] HOST_STATUS 512—This signal is used to inform radio processor 104 of the sleep status of host processor 102. When this signal is low, host processor 102 is asleep, and radio processor 104 should not send low-priority messages. When the signal is high, host processor 102 is awake, and radio processor 104 is free to send message of any priority to host processor 102.

[0070] POWER SUPPLY (VCC_RADIO, VCC_BB, VBATT, GROUND)

[0071] VCC_RADIO—This signal is provided by radio processor 104 and is connected to the I/O voltage of the baseband IC. It will be used by the Duo board to determine when the baseband chip has been powered up and to supply voltage to any interface circuitry, if required.

[0072] VCC_BB—This is a power input to radio processor 104 to be used to derive the various baseband voltages. Rather than use a higher voltage VBATT, this input is a lower voltage (3.2 V typically) to allow for better power efficiency.

[0073] VBATT—This is main battery voltage of the system, ranging from approximately 3.4 to 4.2 volts.

[0074] GROUND—This is the main ground connection in the system. 4 pins are used for power return, and 2 are used for signal ground.

[0075] Handshaking functions can be provided in any of a variety of methods. Exemplary methods are set forth below:

[0076] Power On—GSM

[0077] 1. User powers on device 10.

[0078] 2. VDDS_OUT is asserted. Host processor 102 cannot assert MODULE_WAKE until VDSS_OUT is high, in this exemplary embodiment.

[0079] 3. Radio processor 104 will come out of reset about 5 ms after VDDS_OUT is high. Radio processor 104 will then drive HOST_WAKE after initialization is complete and it sees MODULE_WAKE.

[0080] 4. Radio processor 104 sends message to host processor 102 (1st message sent by the modem) to indicate that radio processor 104 is powered up.

[0081] Power On—CDMA

[0082] 1. User powers on the module.

[0083] 2. VDDS_OUT is asserted. Host processor 102 cannot assert MODULE_WAKE until VDDS_OUT is high, in this exemplary embodiment.

[0084] 3. Radio processor 104 will come out of reset about 5 ms after VDDS_OUT is high. Radio processor

104 will then drive HOST_WAKE after initialization is complete and it sees MODULE_WAKE.

[0085] 4. Host processor **102** sends Enable_Autonomous_Messaging message to radio processor **104** (1st message sent by host processor **102**). This message enables radio processor **104** to send autonomous messages to host processor **102**, and also acts as a soft handshake to signal to radio processor **104** that host acknowledges that modem is powered up.

[0086] 5. Radio processor **104** de-asserts ~RESET_OUT after receiving the message.

[0087] Power Off

[0088] 1. User powers down the module.

[0089] 2. CPU sends graceful deregistration commands to radio processor **104** and waits for confirmation response.

[0090] 3. CPU de-asserts ON/OFF which immediately shuts off power to radio processor **104**.

[0091] Host Sleep/Wake Status

[0092] The CDMA radio processor **104** needs to know host's sleep mode status to suppress low priority messages (GSM radio module does not). This is important to conserve host's power by shutting down the UARTs. When host goes to sleep, it will de-assert the HOST_STATUS signal, which will result in an interrupt to radio processor **104**. Modem will suppress all low priority control messages until this signal is asserted.

[0093] Host Sends Data to Modem

[0094] 1. Host asserts MODULE_WAKE interrupt to signal to radio processor **104** that it wishes to initiate data transfer. Host UART is already enabled at this point.

[0095] 2. Modem woke up if it was in sleep mode. TCXO, UART1 and UART2 are enabled. Modem is ready to receive data. It asserts HOST_WAKE interrupt to signal to host processor **102** that it's ready to receive data.

[0096] 3. Message transfer occurs. Multiple messages can be exchanged.

[0097] 4. After the message has terminated, there is a short hysteresis period to prevent unnecessary toggling of either of the handshake signals.

[0098] 5. Host de-asserts MODULE_WAKE interrupt since it has finished all the message transfer at this point. Modem however can still send messages to host processor **102**. Modem will NOT sleep until MODULE_WAKE is de-asserted so host processor **102** de-asserts MODULE_WAKE when it is finished with its transmission.

[0099] 6. Modem de-asserts HOST_WAKE interrupt if it also does not have any other messages to send. Note: The initiator (host in this case) does not have to terminate the communication first. Now since both MODULE_WAKE and HOST_WAKE are de-asserted, the communication channel is closed and UART clocks are disabled.

[0100] 7. Both processors can enter into sleep state.

[0101] Modem Sends Data to Host

[0102] 1. Modem asserts HOST_WAKE interrupt to signal to host processor **102** that it wishes to initiate data transfer. Modem UARTs are already enabled at this point.

[0103] 2. Host wakes up if it was in sleep mode. Host's UARTs are enabled. Host is ready to receive data on the UARTs. Host asserts MODULE_WAKE to signal to radio processor **104** that it's ready to receive data.

[0104] 3. Message transfer occurs. Multiple bi-directional messages can be exchanged.

[0105] 4. After the message is terminated, there is a short hysteresis period to prevent unnecessary toggling of either of the handshake signals.

[0106] 5. Modem de-asserts HOST_WAKE interrupt since it has finished all the message transfer at this point. Host can still send messages.

[0107] 6. Host de-asserts MODULE_WAKE interrupt since it's done with message transfer. The communication channel is closed.

[0108] 7. Both processors can enter into sleep state.

[0109] In these exemplary methods, radio processor **104** may be configured to de-assert the APP wakeup interrupt when radio processor **104** has completed transmission of the data. Also, host processor **102**, in response to the wake signal, may be configured to send a signal to radio processor **104** indicating host processor **102** is ready to receive data, wherein radio processor **104** is configured to send data in response to receiving the signal. Also, host processor **102** may be configured to provide a second wake signal to radio processor **104**, radio processor **104** being configured to send a second signal to host processor **102** indicating it is ready to receive second data. Host processor **102** may be configured, in response to the second signal, to send second data to radio processor through a communication port.

[0110] Referring now to FIG. 6, radio processor **104** may have a plurality of modes or states from the host processor **102** perspective. In a Power Off state **600**, power supply from host processor **102** to radio processor **104** is turned off. After power is supplied, host processor **102** can provide control signals to radio processor **104** to put radio processor **104** into a Bootloader Mode state **602** or an Operating System (OS) Mode state **604**. In Bootloader Mode state **602**, radio processor **104** is ready for software download. In OS Mode state **604**, radio processor **104** will first go to a Low Power Mode (LPM) state **606**. In LPM state **606**, radio frequency functionality is turned off. In order to make voice and data calls, radio processor **104** has to be moved into RF On Mode state **608**. To get radio processor **104** into RF On Mode state **608**, host processor **102** sends a host controller interface (HCI) commands to radio processor **104**. Host processor **102** can further be configured to take the radio processor **104** back to LPM state **606**.

[0111] Referring now to FIG. 7, a signaling diagram illustrating a Power On to Bootloader Mode function will be described. The labels in the FIGS refer the following sequence of events:

- [0112] B: Host processor **102** (APP) asserts MODEM-BOOT-MODE to indicate booting the radio processor **104** (modem) to Bootloader Mode state **602**.
- [0113] C: APP pulls POWER-ON-MODEM line high.
- [0114] D: Modem start booting.
- [0115] E: Modem asserts MODEM-WAKE-APP line high to indicate to APP that modem has boot up properly.
- [0116] I: Modem de-asserts MODEM-WAKE-APP line to complete the function.
- [0117] Referring now to FIG. **8**, a signaling diagram illustrating a Power On to OS Mode function will be described.
- [0118] B: Application processor (APP) keeps MODEM-BOOT-MODE low to indicate booting radio processor **104** into OS mode.
- [0119] C: APP pulls POWER-ON-MODEM line high.
- [0120] D: Modem starts booting.
- [0121] E: Modem asserts MODEM-WAKE-APP line high to indicate to APP that the modem has boot up properly.
- [0122] I: Modem de-asserts MODEM-WAKE-APP line to complete the function.
- [0123] Referring now to FIG. **9**, a signaling diagram illustrating a Power Off function will be described.
- [0124] B: APP sends ‘Power Off’ message to modem.
- [0125] C: Modem sends power down registration if any and enters low power mode.
- [0126] D: Modem finishes power down tasks (e.g., ‘house cleaning’) and sends HCI message to notify APP that power down begins.
- [0127] E: APP pulls down APP-WAKE-MODEM.
- [0128] F: Modem asserts MODEM-WAKE-APP when it is safe to remove power from the Modem.
- [0129] G: APP de-asserts POWER-ON-MODEM line.
- [0130] H: MODEM-WAKE-APP drops due to removing power.
- [0131] I: APP is ready for next power up sequence.
- [0132] Handshaking functions may prepare host processor **102** and radio processor **104** for events or data exchange by the processors waking each other up from any low power mode they might be in. Data flow may be hardware flow controlled. For example, if host processor **102** has data to send to radio processor **104**, host processor **102** asserts the APP-WAKE-MODEM line and an APP-RTS line. Radio processor **104** is configured to awaken from the sleep state in response to the APP-WAKE-MODEM line, assert an APP-CTS line to cause host processor **102** to begin transmitting data to radio processor **104**. Host processor **102** is configured to handle failures of these signals. Radio processor **104** can use a similar process when it has data to send to host processor **102**. APP-RTS/APP-CTS may be Request to Send/Clear To Send signals which may assist in preventing data loss.
- [0133] In this exemplary embodiment, host processor **102** and radio processor **104** only enter sleep mode when both APP-WAKE-MODEM line and MODEM-WAKE-APP line are held low for a predetermined period of time and there is no data flow between the two processors. Before host processor **102** goes to sleep, it first de-asserts the APP-RTS line. Similarly, radio processor **104** de-asserts the APP-CTS line before it goes to sleep.
- [0134] Referring now to FIG. **10**, a signaling diagram illustrating a host processor initiates communication mode will be described. This process may be used when host processor **102** wishes to initiate communication with radio processor **104**.
- [0135] B: APP asserts APP-WAKE-MODEM line to signal to the modem that it wishes to transfer data to the modem.
- [0136] C: Modem detects the APP-WAKE-MODEM line high.
- [0137] D: Modem enables the hardware flow control. Data flows between APP and modem.
- [0138] G: APP ends sending data. APP-WAKE-MODEM line is pulled low. No data should follow on the line, and the transmit shift register must be empty before APP-WAKE-MODEM is pulled down.
- [0139] I: Modem enters inactive state.
- [0140] Referring now to FIG. **11**, a state diagram illustrating a host processor wakes radio processor data flow from the host processor side will be described. Host processor **102** may have an APP Inactive State mode **1100** in which APP-WAKE-MODEM is de-asserted or is kept low. Host processor **102** may have an APP Active State mode **1102** in which APP-WAKE-MODEM is asserted and data may be sent/received. In this exemplary embodiment, host processor **102** can transfer from APP Active State mode **1102** to APP Inactive State mode **1100** at any time. Host processor **102** may stay awake even after it de-asserts the APP-WAKE-MODEM for any period of time, known or unknown to radio processor **104**.
- [0141] Referring now to FIG. **12**, a state diagram illustrating a host processor wakes radio processor data flow from the radio processor side will be described. FIG. **12** shows a handshaking task state transition diagram for the case when host processor **102** wished to initiate communication with radio processor **104**. Radio processor **104** may have a Modem Inactive State mode **1200** in which APP-WAKE-MODEM is de-asserted or is kept low, a Modem Active State mode **1202** in which APP-WAKE-MODEM is asserted and radio processor **104** wakes up and may send/receive data, and a Modem Grace Period State mode in which APP-WAKE-MODEM is de-asserted and a 750 ms (or other period of time) grace period timer starts. After expiration of the 750 ms grace period timer, radio processor **104** moves to the Modem Inactive State mode **1200**.
- [0142] Referring now to FIG. **13**, a signaling diagram illustrating a radio processor initiates communication mode will be described.
- [0143] B: Modem starts pulsing the MODEM-WAKE-APP line to signal to the APP that it wishes to transfer

data to the APP. Modem asserts APP-CTS line. APP continues to assert MODEM-WAKE-APP line interrupt.

[0144] C: The APP detects the MODEM-WAKE-APP pulse. It asserts APP-RTS line and data flows between the two processors

[0145] F: Modem ends sending data. MODEM-WAKE-APP pulses stop.

[0146] H: After 1 sec (or other period of time) the APP enters inactive state.

[0147] In this exemplary embodiment, radio processor 104 is configured to pulse a wakeup signal during at least a portion of a time during which the host processor 102 is receiving data from the radio processor 104. Periodic pulsing or continuously holding the wakeup signal high (or low if active low) may decrease the likelihood that host processor 102 will miss the wakeup signal, which may result in fewer missed phone calls or data updates (e.g., e-mail). For example, host processor 102 may be handling another interrupt when the first wakeup signal is received, which may cause host processor 102 to miss the wakeup signal. Alternatively, or in addition, the APP-WAKE-MODEM wakeup signal from host processor 102 to radio processor 104 may be pulsed similarly.

[0148] Referring now to FIG. 14, a state diagram illustrating a radio processor wakes host processor data flow from the radio processor side will be described. Radio processor 104 may have a Modem Inactive State mode 1400 in which the MODEM-WAKE-APP line is de-asserted or is kept low, a Modem Active State mode 1402 in which radio processor 104 begins pulsing MODEM-WAKE-APP line and data is sent/received, and a Modem Grace Period State mode 1404 in which radio processor 104 stops pulsing MODEM-WAKE-APP line and a one second (or other time period) grace timer starts. After the timer expires, radio processor 104 enters mode 1400.

[0149] Referring now to FIG. 15, a state diagram illustrating a radio processor wakes host processor data flow from the host processor side will be described. Host processor 102 may have an APP Inactive State mode 1500 in which MODEM-WAKE-APP is low, an APP Active State mode 1502 in which host processor 102 detects MODEM-WAKE-APP pulses, and an APP Grace Period State mode 1504 in which MODEM-WAKE-APP pulses are stopped and a one second (or other time period) grace timer starts. After the timer expires, radio processor 104 enters mode 1500.

[0150] Referring now to FIG. 16, a signaling diagram illustrating a universal serial bus controller wakeup feature will be described. Host processor 102 and radio processor 104 each contain a universal serial bus controller, which may be on-chip or a separate integrated circuit associated with the respective processor. The host USB controller is coupled to host processor 102 and is configured to provide USB communication over a universal serial bus (USB) with radio processor 104. The radio USB controller is coupled to radio processor 104 and is configured to provide USB communication over the USB with host processor 102.

[0151] FIG. 16 shows the signaling used when radio processor 104 wishes to wake up the USB controller on host

processor 102. USB-WAKE-APP would be a USB remote wake up message (or a general purpose input/output GPIO signal) asserted when USB is in suspend or off states and data needs to be sent from radio processor 104 to host processor 102. In response to receiving USB-WAKE-APP, host processor 102 commands its USB controller to enter an on state to allow USB controller to receive data from radio processor 104.

[0152] B: Modem starts pulsing the USB-WAKE-APP line to signal to the APP that it wishes to transfer data to the APP.

[0153] E: The APP detects the USB-WAKE-APP pulses. APP activates USB. Data transfer begins.

[0154] K: Modem ends sending data. USB-WAKE-APP pulses stop.

[0155] M: After 750 ms to is (or other time period) the APP enters inactive state.

[0156] Advantageously, at least one of the USB controllers on host processor 102 and radio processor 104 has off, suspend, and on states. Suspend state may be a state in which USB controller operates at lower power than the on state, yet can be moved to the on state more quickly than from the off state. In suspend state, the USB controller does not drive the USB, but is not in an off state. Suspend state may be as defined by a Universal Serial Bus specification. A USB controller may move to a suspend state after a predetermined period of inactivity. Host processor 102 may be moved to a wake state before host processor 102 moves host USB controller among on, suspend, and suspend states. After moving host USB controller to a new state, host processor 102 may return to a sleep state and host USB controller will remain in its new state.

[0157] According to one exemplary embodiment, after host USB controller processes a message on the universal serial bus, the universal serial bus controller is configured to enter the off state while host processor 102 is in a sleep state. By moving host USB controller to an off state (instead of a suspend state or leaving in an on state), power consumption can be reduced (e.g., 600 uA in one exemplary embodiment). Conventional USB usage in, for example, a personal computer provides that USB controllers are routinely left in suspend state because of a lesser need to conserve power.

[0158] Advantageously, the universal serial bus controller is further configured to move from the off state to the on state without enumerating, in order to save time.

[0159] According to another exemplary embodiment, a serial communication bus (e.g., UART) controller coupled to host processor 102 may have an on state and an off state, wherein the USB controller on host processor 102 is configured to be put in the off state when the serial communication bus controller is in the on state. For example, if a particular type of data received at radio processor 104 may be communicated to host processor 102 via the serial communication bus, USB need not be moved to the on or wake state. For example, a USB may be used for packet data (e.g., wireless synchronizing of e-mails, streaming video, internet browsing, etc.), diagnostic logging from modem, and sending debug messages.

[0160] According to one example, a mobile computing device 10 has been activated with a network and registered

with a service provider. When radio processor **104** receives incoming data, it knows host processor **102** is in sleep mode and host USB controller is off. Radio processor **104** moves its own radio USB controller to an on/wake state. Radio processor **104** provides a signal over a GPIO (e.g. MODEM-WAKE-APP) to wake up host processor **102**. Radio processor **104** then sends an HCI message to tell host processor **102** to power host USB controller to an on/wake state, before sending any data. Host processor **102** wakes up and provides a USB clock signal to radio USB controller. The data is then communicated from radio processor **104** to host processor **102**.

[0161] Alternatively, UART hardware flow control lines may be used for the host processor wake up signal and a dedicated GPIO may be used to wake up the host USB controller. In this embodiment, both host and radio processor may reconfigure a pin to general GPIO when host processor **102** is sleeping. Further, an HCI message could be sent from the host to the radio processor just before the host processor enters sleep mode. Radio process may not acknowledge this message. As a further alternatively, the bootloader line may be multiplexed to act as a wakeup line.

[0162] Referring now to FIG. 17, a flow diagram illustrates a universal serial bus controller wakeup mode, according to an exemplary embodiment. In this flow diagram, a mobile originated data call process is illustrated. Host and radio processors **102**, **104** can be configured to send the following HCI messages to the other:

[0163] DATA-DOWN: APP sends this HCI message to the MODEM when the APP is about to sleep. This message updates the MODEM state so that the MODEM will send the DATA-UP message if there are any more data activities involving the APP.

[0164] DATA-UP: MODEM sends this HCI message if the MODEM received the DATA-DOWN message before and there are data activities which require APP attention. This message should send to the telephone interface layer (TIL) software on host processor **102** and host processor **102** will power the host USB controller to receive data packets.

[0165] Host processor **102** shall setup the host USB controller and send the DATA-UP to wake up the radio USB controller. Host processor **102** first wakes up the radio processor **104** by APP-WAKE-MODEM pin to bring up the UART communication for HCI. Host processor **102** provides the USB clock signal after the radio USB controller is powered up before any USB control commands or data are sent over the USB. In this embodiment, USB re-enumeration is not required.

[0166] Referring now to FIG. 18, a mobile terminated data call function is disclosed. When there is incoming data from the network while a call is inactive, the network will page the device to setup a traffic channel for receiving the data. Radio processor **104** will forward this page message to the host and the host may intercept this page message and turn on the host USB controller. Host processor **102** is configured to handle this event even it is in the process of entering sleep state.

[0167] Referring to FIG. 19, a host processor entering sleep mode function is disclosed. Host processor **102** may check the MODEM-WAKE-APP signal before entering

sleep state. If host processor **102** decides to enter sleep mode, it is configured to send the HCI message to radio processor **104**. If there is any more incoming data, radio processor **104** is configured to wake up the APP with an APP wakeup procedure described above, including sending the DATA-UP message to the host for moving the USB controller to an on/wake state.

[0168] According to another embodiment, mobile computing device **10** is configured to communicating with a network, the network of a type configured to release a channel of communication with a device after expiration of a timer (e.g., 10 to 20 seconds, or other time period). CDMA is an example of such a network. Radio processor **104** is configured to provide wireless communication over the network and to enter a sleep mode before expiration of the timer. Radio processor **104** can be configured to enter the sleep mode in response to a sleep signal (e.g., message, interrupt, etc.) from host microprocessor **102**, or it may put itself into a sleep mode based on one or more criteria (e.g., absence of data being received over the wireless network). Radio processor **104** may be configured to enter the sleep mode in response to a signal indicating the host processor **102** is entering a sleep state.

[0169] One of the concepts in CDMA/IS-2000 is data dormancy. Any active data call in IS-2000 requires the mobile device to setup a traffic channel between the base station controller and the mobile device. Typical dormancy is network timer driven, the network operator configured to request dormancy of the mobile device based on a timer for inactivity of data.

[0170] In this embodiment, mobile computing device **10** is configured to enter without waiting for the expiration of the timer. Dormancy may relate to moving radio processor **104** to a sleep state. Dormancy may relate to releasing an active data call between device **10** and the network, while optionally maintaining a paging channel such as SMS or packet data. Mobile computing device **10** may requests the network to release radio resources on the traffic channel when device **10** does not expect any data activity to happen. Device **10** or some portion thereof (e.g., radio processor **104**) may then enter sleep mode once the traffic channel is released.

[0171] In one exemplary embodiment, the host processor **102** is responsible for initiating the fast dormancy based on the data connectivity between processors **102** and **104**. Host processor **102** is configured to send an HCI message to radio processor **104** before entering sleep mode. Radio processor **104** does not acknowledge this HCI message because host processor **102** may have entered sleep state already and host processor **102** is preferably not awakened unnecessarily. If there is any incoming data from the network that has to be sent to host processor **102**, radio processor **104** will wake up host processor **102** with exemplary wakeup procedures shown above.

[0172] In one embodiment, radio processor **104** may respond to the DATA-DOWN message as a trigger for requesting fast dormancy and radio processor **104** may generate the DATA-UP message based on an EVDO paging message before the incoming data arrives from the traffic channel.

[0173] While the exemplary embodiments illustrated on the Figs. and described above are presently exemplary, it should be understood that these embodiments are offered by way of example only. Accordingly, the present invention is not limited to a particular embodiment, but extends to

various modifications that nevertheless fall within the scope of the appended claims.

What is claimed is:

1. A mobile computing device, comprising:
 - a first microprocessor having a sleep mode and a wake mode;
 - a second microprocessor configured for wireless communication; and;
 - a communication port configured to communicate data from the second processor to the first processor, wherein the second processor is configured to provide a wake signal to the first microprocessor and the first microprocessor is configured to open the communication port in response to the wake signal and to receive data from the second microprocessor through the communication port.
2. The mobile computing device of claim 1, wherein the communication port comprises a universal serial bus.
3. The mobile computing device of claim 2, wherein the second microprocessor is configured to communicate with the first microprocessor via a universal asynchronous receiver transmitter (UART).
4. The mobile computing device of claim 1, wherein the first microprocessor is configured to process the wake signal as an interrupt.
5. The mobile computing device of claim 4, wherein the second microprocessor is configured to de-assert the interrupt when the second microprocessor has completed transmission of the data.
6. The mobile computing device of claim 1, wherein the second microprocessor is a modem.
7. The mobile computing device of claim 1, wherein the first and second microprocessors are part of a dual-core chip.
8. The mobile computing device of claim 1, wherein the first processor, in response to the wake signal, is configured to send a signal to the second processor indicating the first processor is ready to receive data, wherein the second processor is configured to send the data in response to receiving the signal
9. The mobile computing device of claim 7, wherein the first processor is configured to provide a second wake signal to the second microprocessor, the second processor is configured to send a second signal to the first processor indicating the second processor is ready to receive second data, wherein the first processor is configured, in response to the second signal to send data to the second microprocessor through the communication port.
10. The mobile computing device of claim 1, wherein the second microprocessor is configured to pulse the wakeup signal during at least a portion of a time during which the first microprocessor is receiving data from the second microprocessor.
11. A mobile computing device, comprising:
 - a first microprocessor configured to operate a plurality of applications and having a sleep mode and a wake mode;

- a second microprocessor configured to provide wireless communication over a network;

- a universal serial bus; and

- a universal serial bus controller having on, off and suspend states, the universal serial bus controller coupled to the first microprocessor and configured to provide universal serial bus communication with the second microprocessor, wherein after processing a message on the universal serial bus, the universal serial bus controller is configured to enter the off state while the first processor is in a sleep state.

12. The mobile computing device of claim 11, further comprising a serial communication bus controller coupled to the first microprocessor, the serial communication bus controller having an on state and an off state, wherein the universal serial bus controller is configured to be put in the off state when the serial communication bus controller is in the on state.

13. The mobile computing device of claim 11, wherein the universal serial bus controller is configured to move from the off to the on state without enumerating.

14. A mobile computing device for communicating with a network, the network of a type configured to release a channel of communication with a device after expiration of a timer, comprising:

- a first microprocessor configured to operate a plurality of applications; and

- a second microprocessor configured to provide wireless communication over the network, wherein the second microprocessor has a sleep mode and a wake mode, wherein the second microprocessor is configured to enter the sleep mode before expiration of the timer.

15. The mobile computing device of claim 14, wherein the second microprocessor is configured to provide wireless data communication with the network using a Code Division Multiple Access protocol.

16. The mobile computing device of claim 14, wherein the second microprocessor is configured to provide wireless data communication with the network having a dormancy timer between approximately 10 and 20 seconds.

17. The mobile computing device of claim 14, wherein the second microprocessor is configured to enter the sleep mode in response to a sleep signal from the first microprocessor.

18. The mobile computing device of claim 14, wherein the second microprocessor is configured to enter the sleep mode in response to a signal indicating the first microprocessor is entering a sleep state.

19. The mobile computing device of claim 14, wherein the first and second microprocessors are part of a dual-core integrated circuit.

* * * * *