



(12) **United States Patent**
Beghtol et al.

(10) **Patent No.:** **US 6,253,075 B1**
(45) **Date of Patent:** **Jun. 26, 2001**

- (54) **METHOD AND APPARATUS FOR INCOMING CALL REJECTION**
- (75) Inventors: **Justin Beghtol; Kenneth Mar**, both of San Diego, CA (US)
- (73) Assignee: **Nokia Mobile Phones Ltd.**, Espoo (FI)
- (*) Notice: Subject to any disclaimer, the term of this patent is extended or adjusted under 35 U.S.C. 154(b) by 0 days.

5,758,280	*	5/1998	Kimura	455/412
5,835,582	*	11/1998	Matsuda et al.	379/373
5,930,351	*	7/1999	Lappen et al.	379/373
5,956,632	*	9/1999	Shon	455/404
6,044,148	*	3/2000	Bleile	379/375
6,108,630	*	8/2000	Kuechler et al.	704/270
6,122,347	*	9/2000	Borland	379/70

FOREIGN PATENT DOCUMENTS

4-258029	*	9/1992	(JP)	H04B/7/26
----------	---	--------	------	-----------

* cited by examiner

Primary Examiner—Daniel Hunter

Assistant Examiner—Pablo Tran

(74) *Attorney, Agent, or Firm*—Brian T. Rivers

- (21) Appl. No.: **09/212,757**
- (22) Filed: **Dec. 16, 1998**

Related U.S. Application Data

- (60) Provisional application No. 60/086,032, filed on May 19, 1998.
- (51) **Int. Cl.**⁷ **H04M 3/42**
- (52) **U.S. Cl.** **455/415; 455/412; 455/567; 379/142**
- (58) **Field of Search** 455/404, 33.1, 455/54.1, 90, 525, 550, 422, 567, 455-458, 412-415, 565; 579/142, 127, 67-69, 201, 207, 211, 373, 372, 374, 376, 350, 140, 199-200

(57) **ABSTRACT**

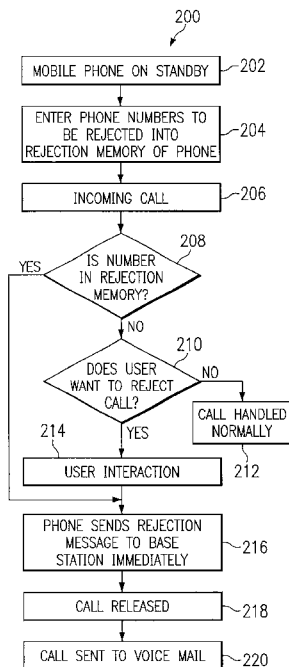
A method and apparatus for rejecting incoming calls for use in a mobile communications device. The method and apparatus permit a user of a mobile communications device to automatically reject calls intended to be received by the device. In an exemplary embodiment, a rejection memory within the mobile device is preprogrammed with identification information representative of transmitting stations to be rejected. When a call is incoming, identification information included with the incoming call is compared with identification information contained in the rejection memory. When a match is detected, a rejection message is automatically sent by the mobile communications device to the transmitting station. Upon receipt of the rejection message, the transmitting station terminates the call and may reroute the call to a voice messaging system. Additionally, upon display of the identification information of an incoming call, the user may manually trigger the transmission of the rejection message from the mobile communications device.

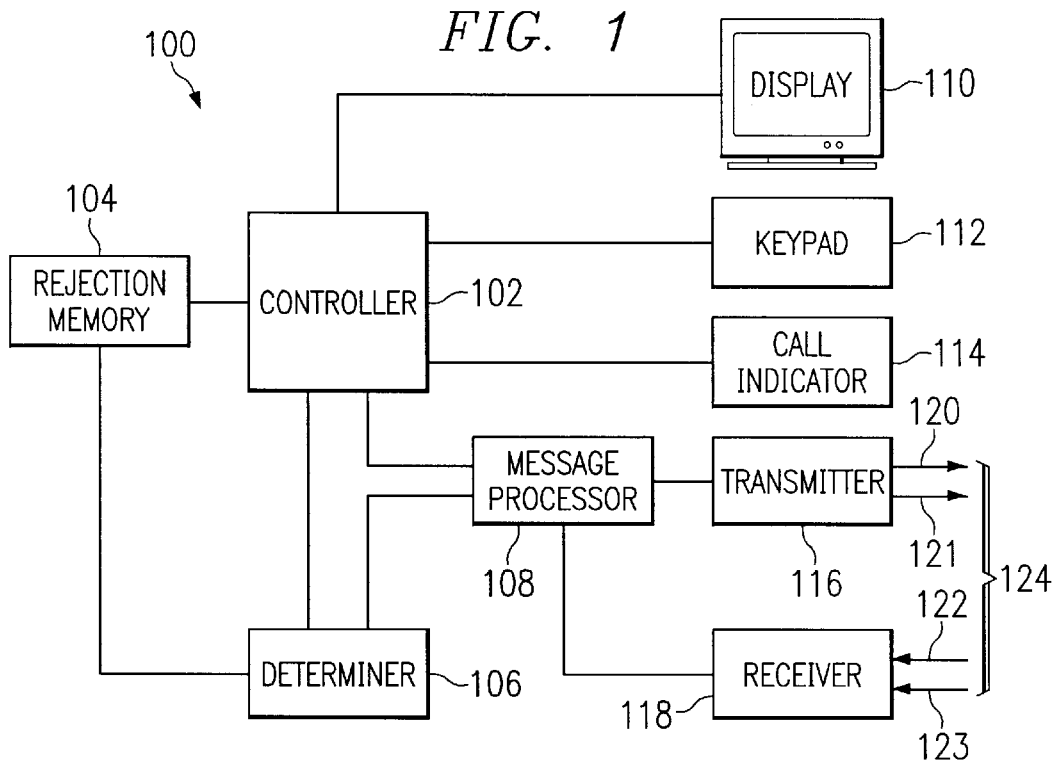
(56) **References Cited**

U.S. PATENT DOCUMENTS

5,329,578	*	7/1994	Brennan et al.	379/67
5,553,125		9/1996	Martensson	379/140
5,559,860		9/1996	Mizikovsky	379/58
5,657,372		8/1997	Ahlberg et al.	455/414
5,661,788		8/1997	Chin	379/142
5,748,709	*	5/1998	Sheerin	379/67

15 Claims, 4 Drawing Sheets





300

MESSAGE TYPE	FEATURE DESCRIPTION	RECORD TYPE (BINARY)
FLASH WITH INFORMATION MESSAGE	FEATURE INDICATOR	00000010

FIG. 3a

302

TYPE SPECIFIC FIELD	FEATURE IDENTIFIERS (BITS)
INCOMING CALL REJECTION	0000
RESERVED	XXXX

FIG. 3b

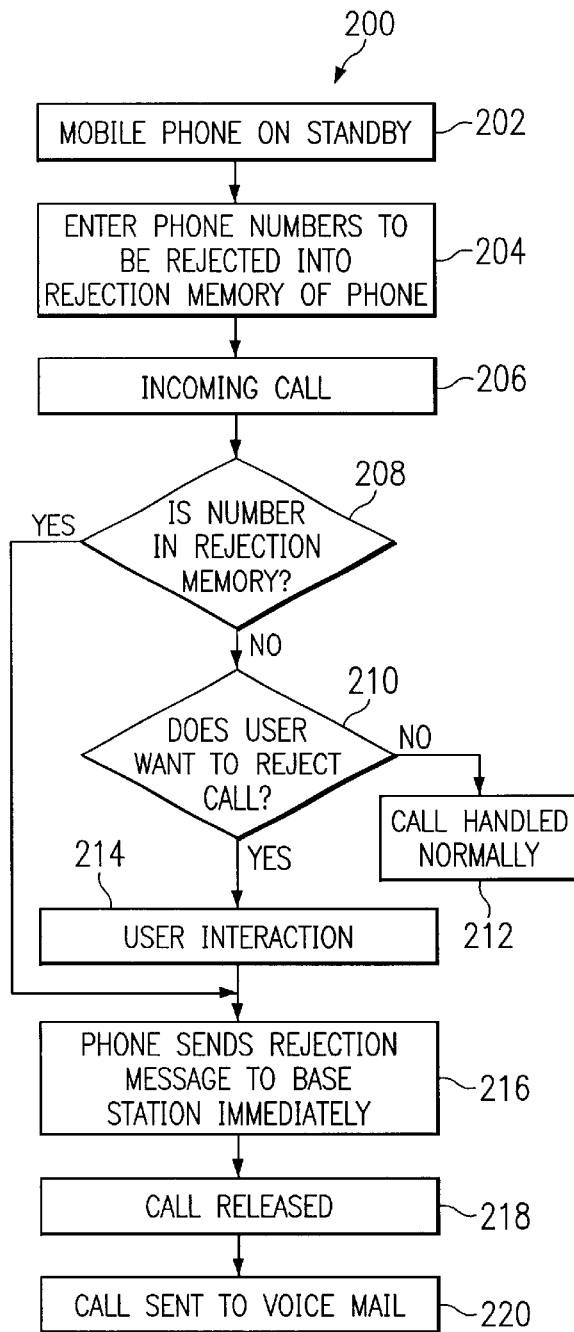


FIG. 2

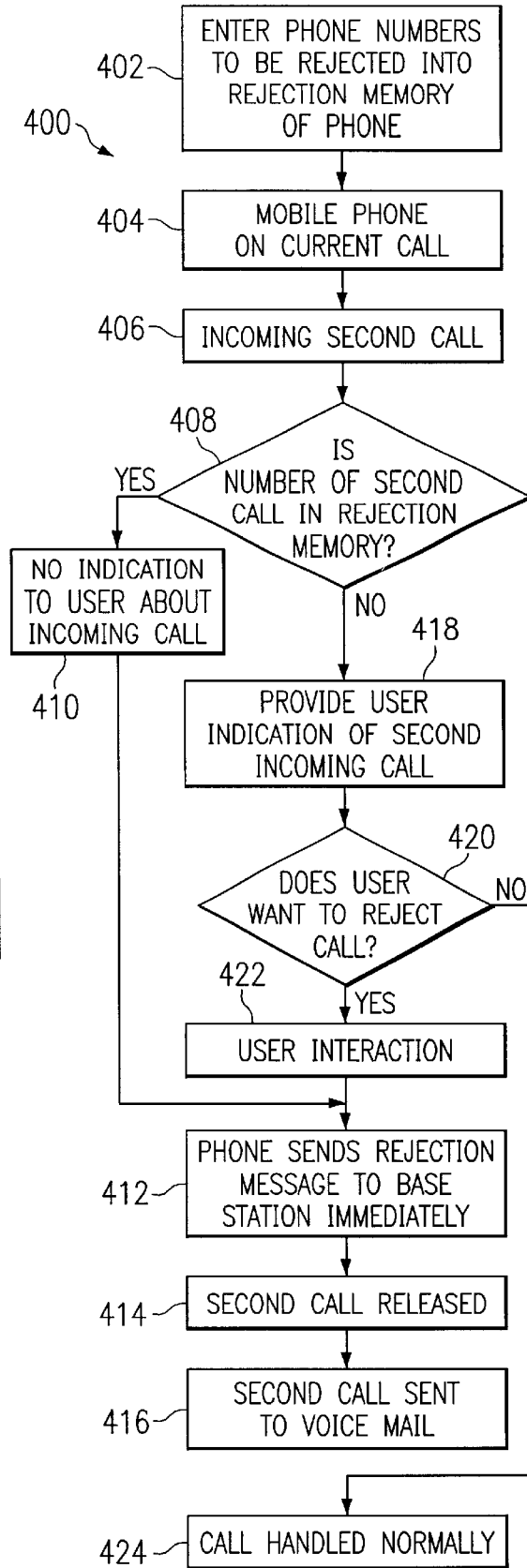
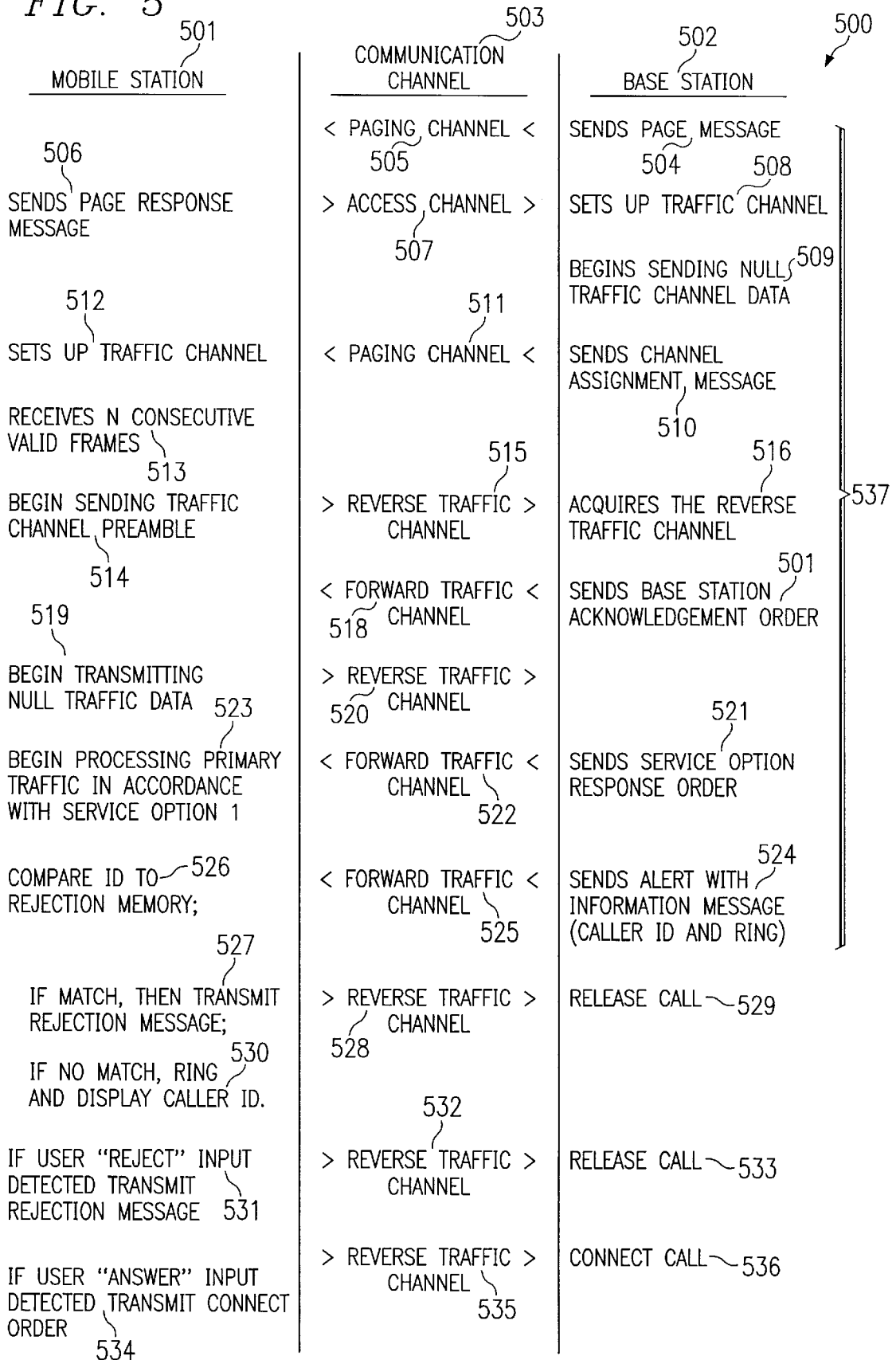


FIG. 4

FIG. 5



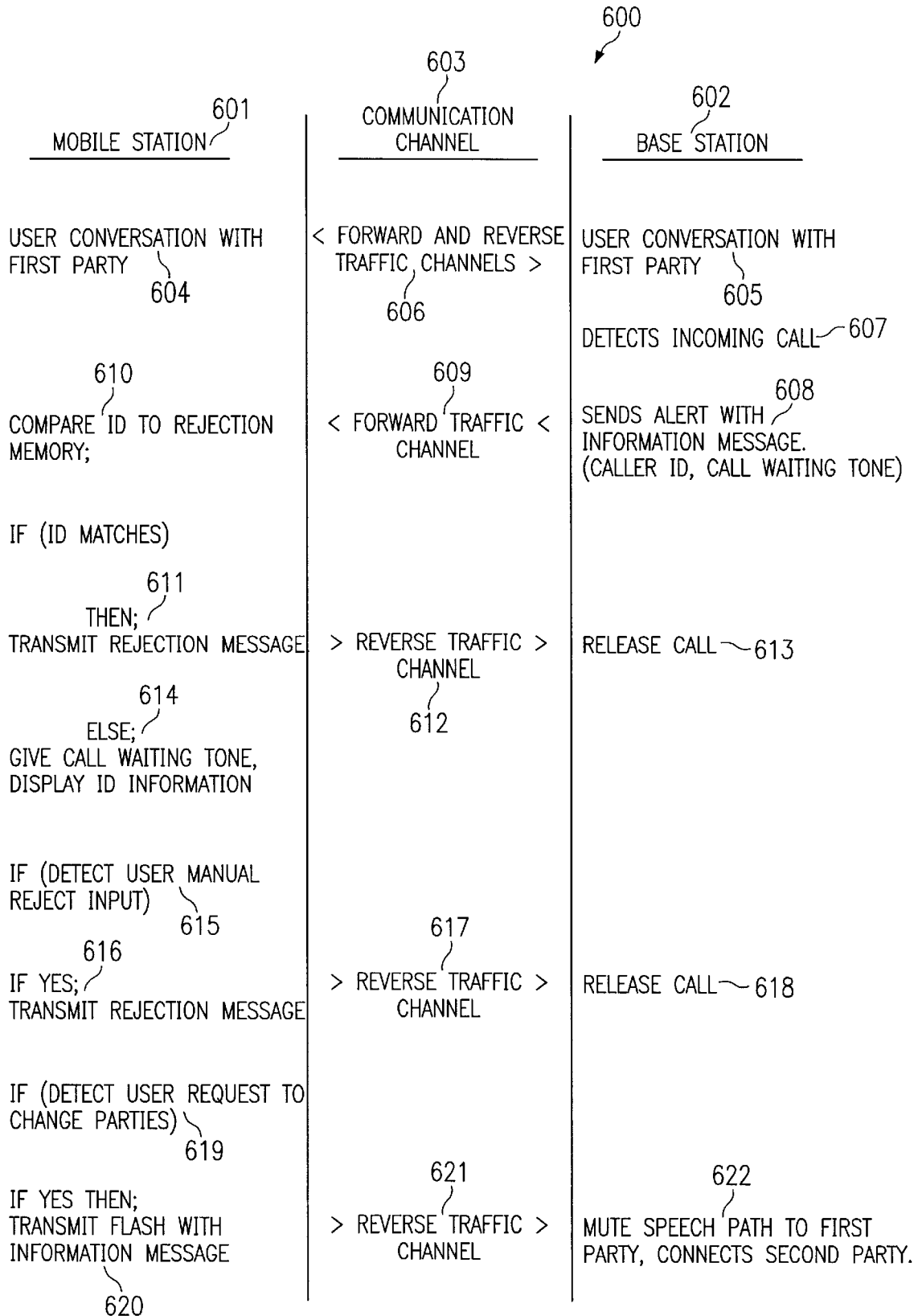


FIG. 6

Explore Litigation Insights

Docket Alarm provides insights to develop a more informed litigation strategy and the peace of mind of knowing you're on top of things.

Real-Time Litigation Alerts



Keep your litigation team up-to-date with **real-time alerts** and advanced team management tools built for the enterprise, all while greatly reducing PACER spend.

Our comprehensive service means we can handle Federal, State, and Administrative courts across the country.

Advanced Docket Research



With over 230 million records, Docket Alarm's cloud-native docket research platform finds what other services can't. Coverage includes Federal, State, plus PTAB, TTAB, ITC and NLRB decisions, all in one place.

Identify arguments that have been successful in the past with full text, pinpoint searching. Link to case law cited within any court document via Fastcase.

Analytics At Your Fingertips



Learn what happened the last time a particular judge, opposing counsel or company faced cases similar to yours.

Advanced out-of-the-box PTAB and TTAB analytics are always at your fingertips.

API

Docket Alarm offers a powerful API (application programming interface) to developers that want to integrate case filings into their apps.

LAW FIRMS

Build custom dashboards for your attorneys and clients with live data direct from the court.

Automate many repetitive legal tasks like conflict checks, document management, and marketing.

FINANCIAL INSTITUTIONS

Litigation and bankruptcy checks for companies and debtors.

E-DISCOVERY AND LEGAL VENDORS

Sync your system to PACER to automate legal marketing.