



US006462905B1

(12) **United States Patent**
Takahashi et al.

(10) **Patent No.:** **US 6,462,905 B1**
(45) **Date of Patent:** **Oct. 8, 2002**

- (54) **MAGNETIC TAPE CARTRIDGE**
- (75) Inventors: **Daisuke Takahashi; Hideaki Shiga; Seiji Tsuyuki**, all of Kanagawa-ken (JP)
- (73) Assignee: **Fuji Photo Film Co., Ltd.**, Kanagawa-Ken (JP)
- (*) Notice: Subject to any disclaimer, the term of this patent is extended or adjusted under 35 U.S.C. 154(b) by 132 days.

EP	0 926 676 A1	6/1999
EP	1 054 403 A1	11/2000
EP	1 058 259 A2	12/2000
WO	97/15925	5/1997
WO	99/65032	12/1999

* cited by examiner

Primary Examiner—Robert S. Tupper
(74) *Attorney, Agent, or Firm*—Sughrue Mion, PLLC

- (21) Appl. No.: **09/707,774**
- (22) Filed: **Nov. 8, 2000**
- (30) **Foreign Application Priority Data**
 - Nov. 8, 1999 (JP) 11-317166
 - Nov. 9, 1999 (JP) 11-318464
- (51) **Int. Cl.**⁷ **G11B 23/027**
- (52) **U.S. Cl.** **360/132**
- (58) **Field of Search** 360/132; 242/338.1, 242/338.2

(57) **ABSTRACT**

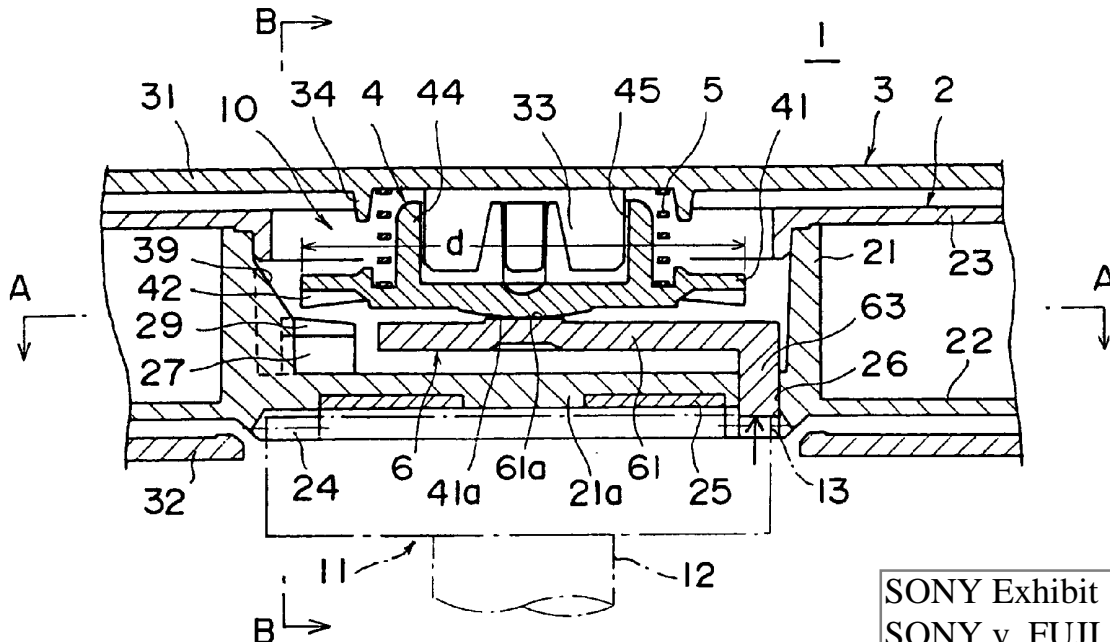
A magnetic tape cartridge includes a magnetic tape wound around a single reel, a cartridge casing in which the reel is housed for rotation and a reel stopper which locks the reel not to rotate when the magnetic tape cartridge is not being used and releases the reel to permit to rotate when the magnetic tape cartridge is to be used. The reel stopper includes a braking member which is movable between a locking position where it is in contact with the reel to restrict rotation of the reel and a releasing position where it is away from the reel to permit rotation of the same, an urging member which urges the braking member toward the locking position, and a releasing member which is rotated integrally with the reel and moves the braking member toward the releasing position in response to a reel chucking action of the reel drive means of a tape drive. The braking member is provided with a braking gear which is adapted to be engaged, to restrict rotation of the reel, with an engagement gear tooth on an engagement projection formed on the reel while the reel is provided with a guide member which centers the braking member with respect to the reel.

- (56) **References Cited**
 - U.S. PATENT DOCUMENTS**
 - 5,366,173 A 11/1994 Lammers et al. 242/338.1
 - 5,901,916 A 5/1999 McAllister et al. 242/348
 - 6,113,020 A * 9/2000 Nayak 242/338.1
 - 6,234,416 B1 * 5/2001 Nayak 242/338.1
 - 6,318,657 B1 * 11/2001 Nayak 242/338.1
 - 6,344,944 B2 * 2/2002 Stabile et al. 242/336

FOREIGN PATENT DOCUMENTS

EP 0 284 687 A2 10/1988

4 Claims, 4 Drawing Sheets



SONY Exhibit 1001
SONY v. FUJI

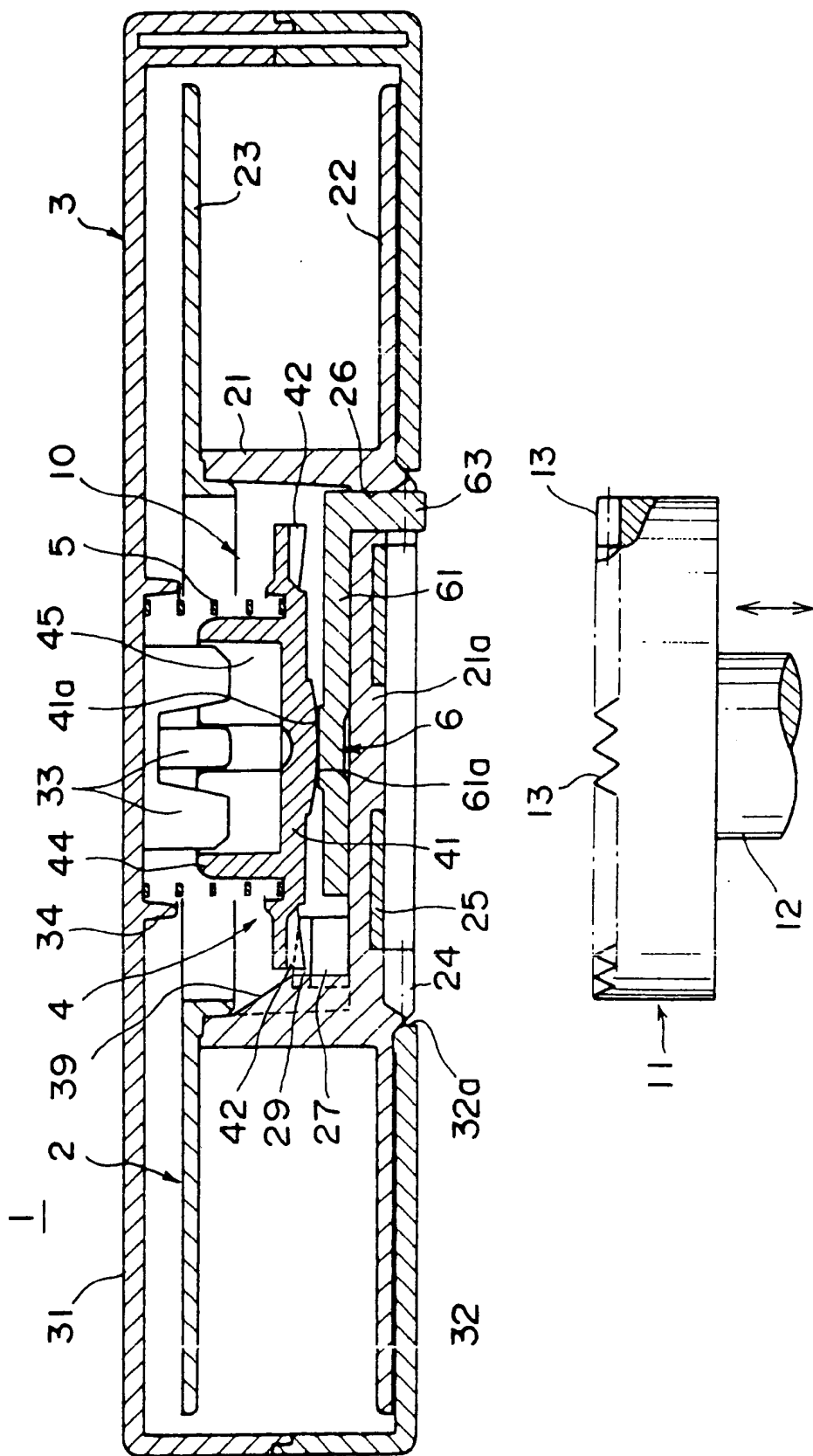
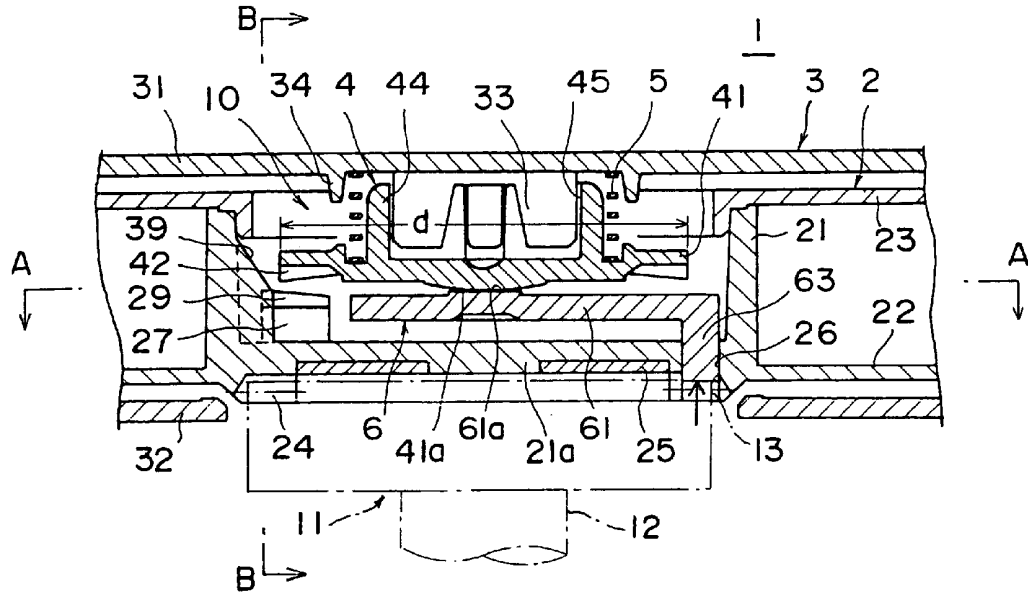
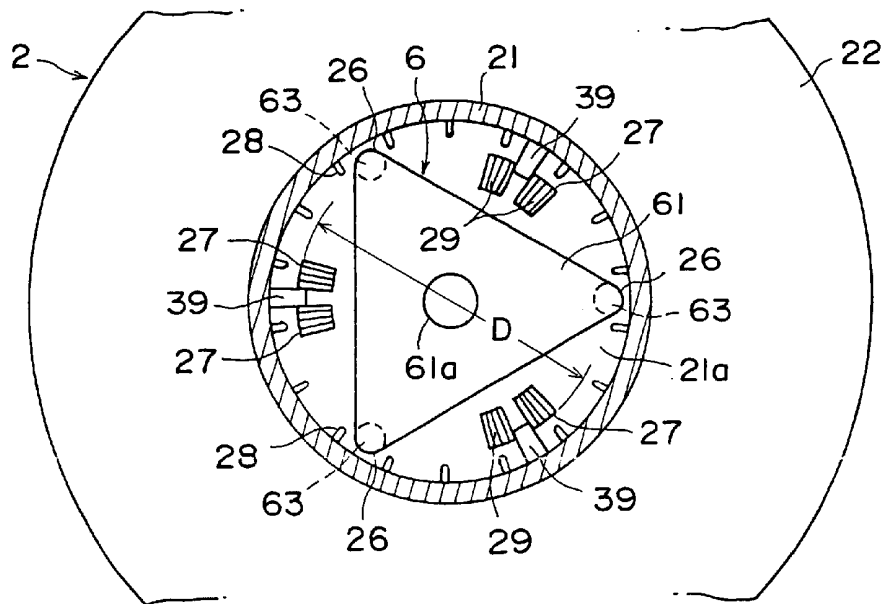


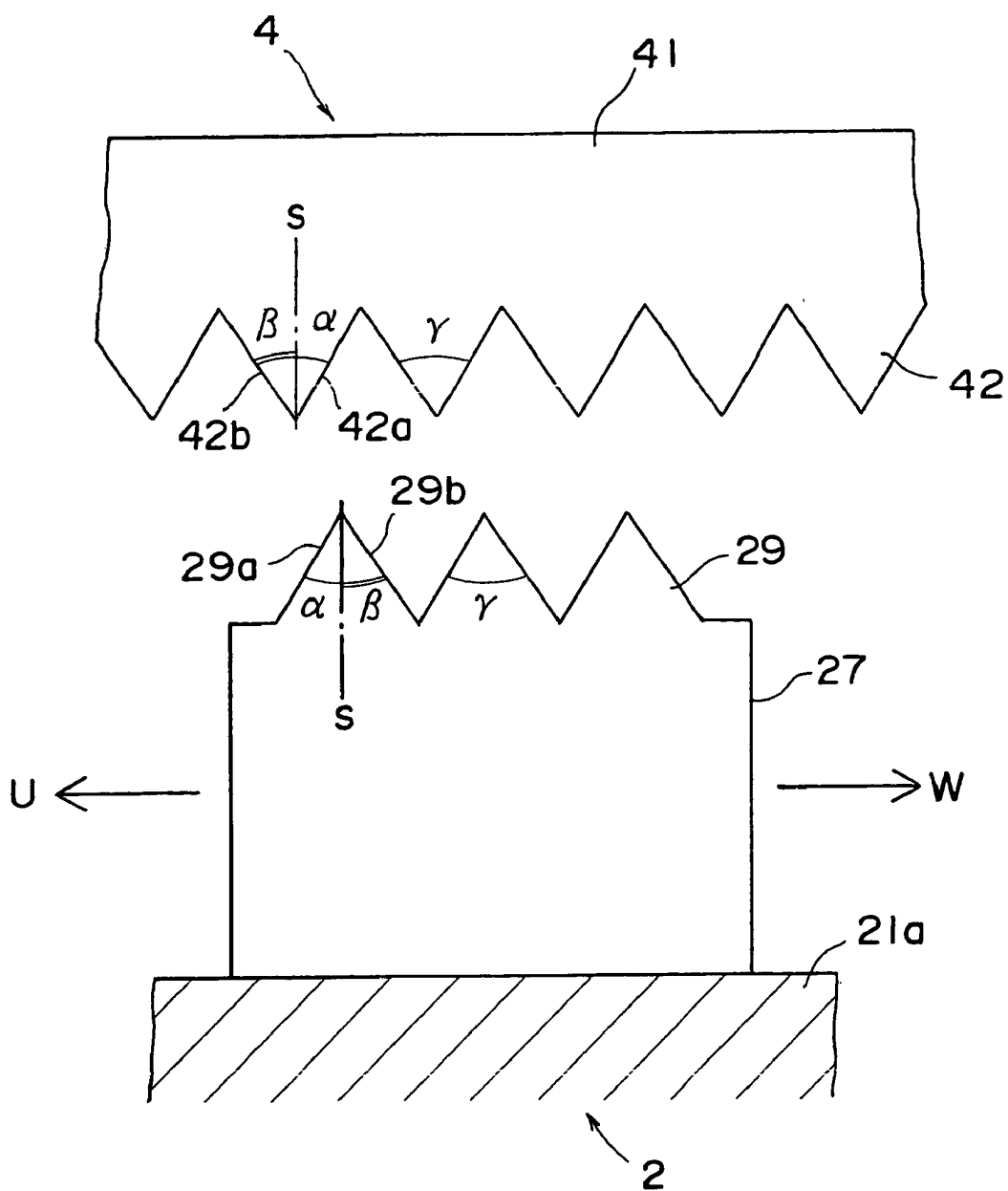
FIG. 1

F I G . 2



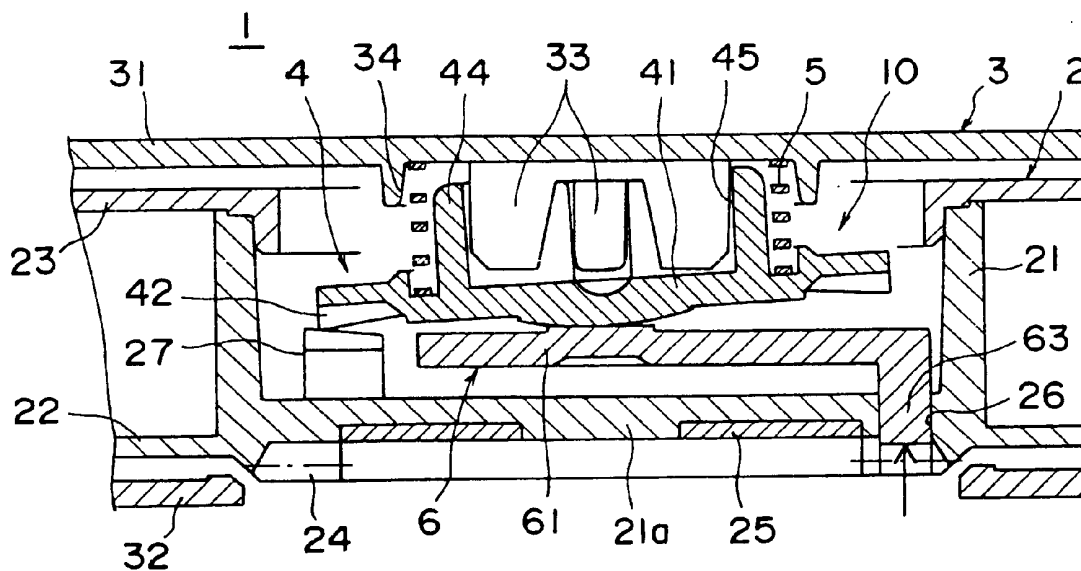
F I G . 3





F I G . 4

F I G . 5



PRIOR ART

Explore Litigation Insights

Docket Alarm provides insights to develop a more informed litigation strategy and the peace of mind of knowing you're on top of things.

Real-Time Litigation Alerts



Keep your litigation team up-to-date with **real-time alerts** and advanced team management tools built for the enterprise, all while greatly reducing PACER spend.

Our comprehensive service means we can handle Federal, State, and Administrative courts across the country.

Advanced Docket Research



With over 230 million records, Docket Alarm's cloud-native docket research platform finds what other services can't. Coverage includes Federal, State, plus PTAB, TTAB, ITC and NLRB decisions, all in one place.

Identify arguments that have been successful in the past with full text, pinpoint searching. Link to case law cited within any court document via Fastcase.

Analytics At Your Fingertips



Learn what happened the last time a particular judge, opposing counsel or company faced cases similar to yours.

Advanced out-of-the-box PTAB and TTAB analytics are always at your fingertips.

API

Docket Alarm offers a powerful API (application programming interface) to developers that want to integrate case filings into their apps.

LAW FIRMS

Build custom dashboards for your attorneys and clients with live data direct from the court.

Automate many repetitive legal tasks like conflict checks, document management, and marketing.

FINANCIAL INSTITUTIONS

Litigation and bankruptcy checks for companies and debtors.

E-DISCOVERY AND LEGAL VENDORS

Sync your system to PACER to automate legal marketing.