



US006271835B1

(12) **United States Patent**
Hoeksma

(10) **Patent No.:** **US 6,271,835 B1**
(45) **Date of Patent:** **Aug. 7, 2001**

(54) **TOUCH-SCREEN INPUT DEVICE**
(75) **Inventor:** **Henry Hoeksma, Kinburn (CA)**
(73) **Assignee:** **Nortel Networks Limited, Montreal (CA)**
(*) **Notice:** Subject to any disclaimer, the term of this patent is extended or adjusted under 35 U.S.C. 154(b) by 0 days.

5,288,158 2/1994 Matias .
5,379,057 1/1995 Clough et al. .
5,574,482 11/1996 Niemeier .
5,583,497 12/1996 Hanks .
5,956,021 * 9/1999 Kubota et al. 345/179

* cited by examiner

Primary Examiner—Richard Hjerpe
Assistant Examiner—Duc Dinh
(74) *Attorney, Agent, or Firm*—Jeff Measures

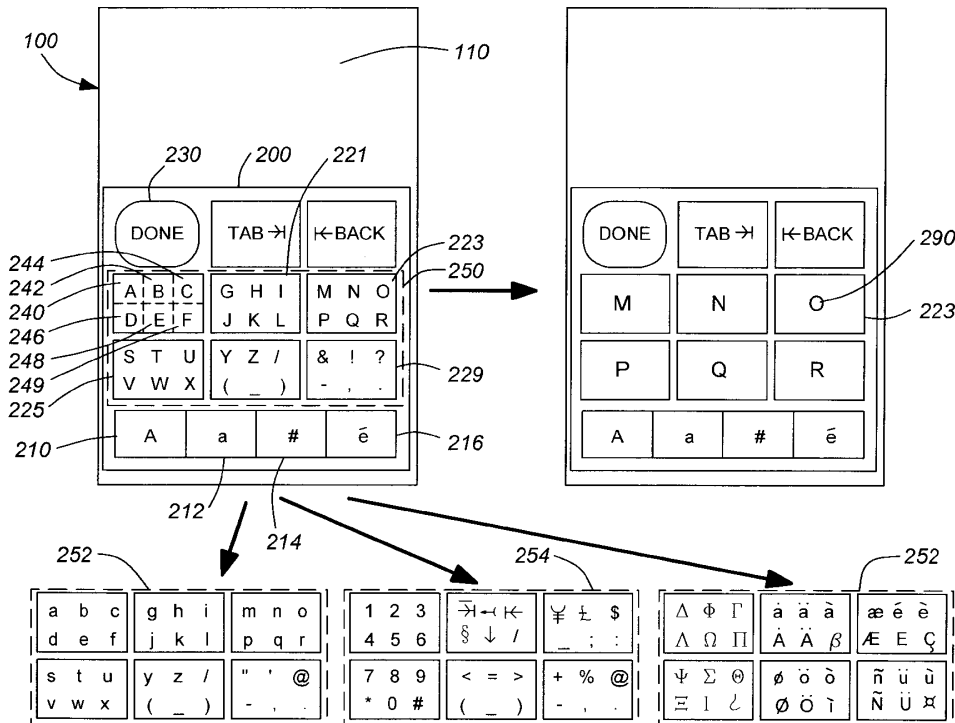
(21) **Appl. No.:** **09/146,232**
(22) **Filed:** **Sep. 3, 1998**
(51) **Int. Cl.⁷** **G09G 5/00**
(52) **U.S. Cl.** **345/168; 345/169; 345/171; 345/179**
(58) **Field of Search** **345/168, 169, 345/171, 172, 179**

(57) **ABSTRACT**

A touch screen input device for improving the input of alphanumeric data in an area of limited space. The input device employs a multi-touch method of input which is intuitive to a first time user. The device maps a plurality of characters to each of its input keys and upon selection of a key subsequently re-labels the input keys with the characters displayed on the selected key. The device is intuitive to a first time user since the input keys are re-labeled in manner which corresponds to their relative position within the selected input key. In comparison to single stroke input devices this device reduces the number of keys required for data input. Alternatively a user could select a single character without employing the multi-touch method by selecting a pre-defined element of a particular input key.

(56) **References Cited**
U.S. PATENT DOCUMENTS
4,333,097 6/1982 Buric et al. .
4,680,728 7/1987 Davis, II et al. .
4,725,694 2/1988 Auer et al. .
5,003,503 3/1991 Lapeyre .
5,006,001 4/1991 Vulcano .
5,258,748 11/1993 Jones .

14 Claims, 6 Drawing Sheets



Apple Inc.

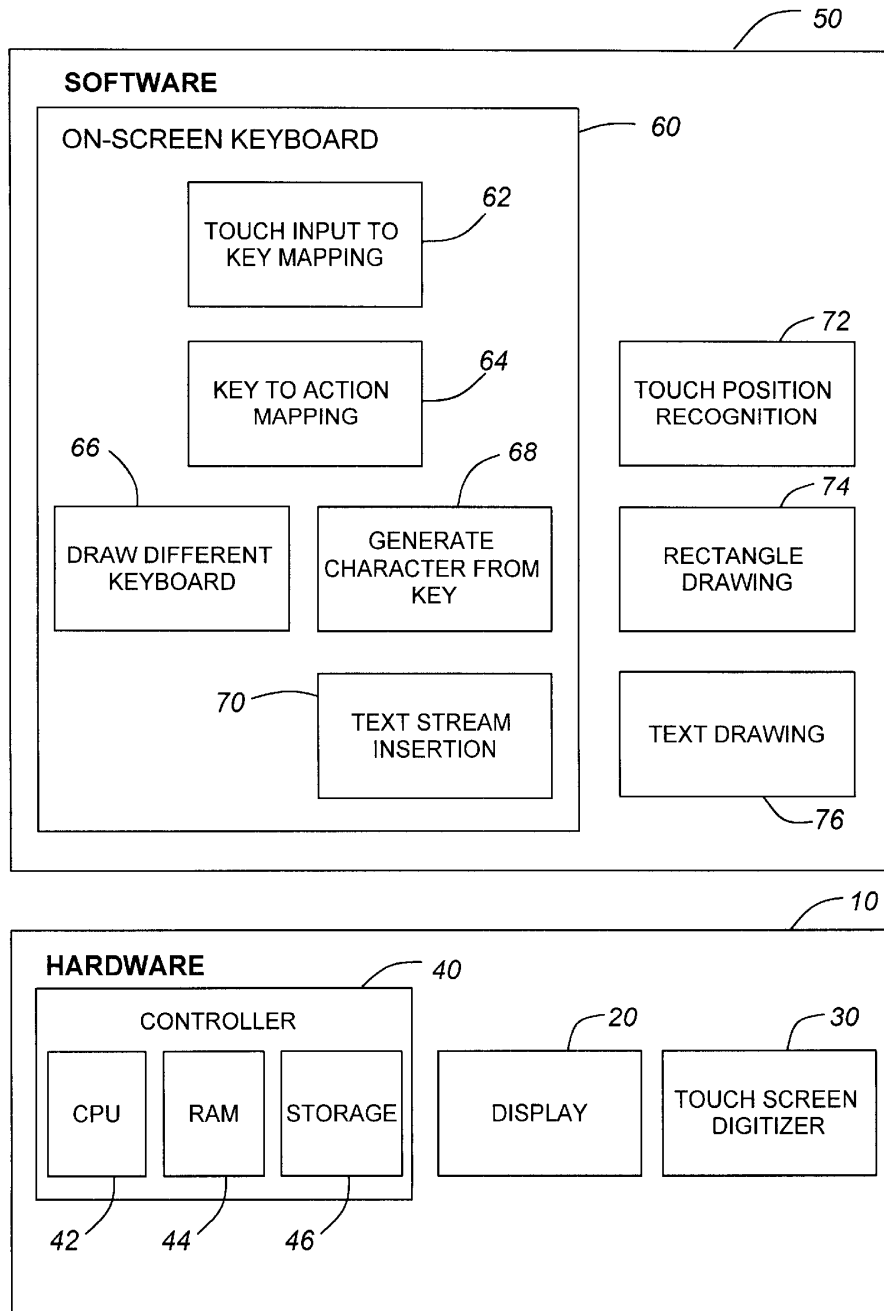
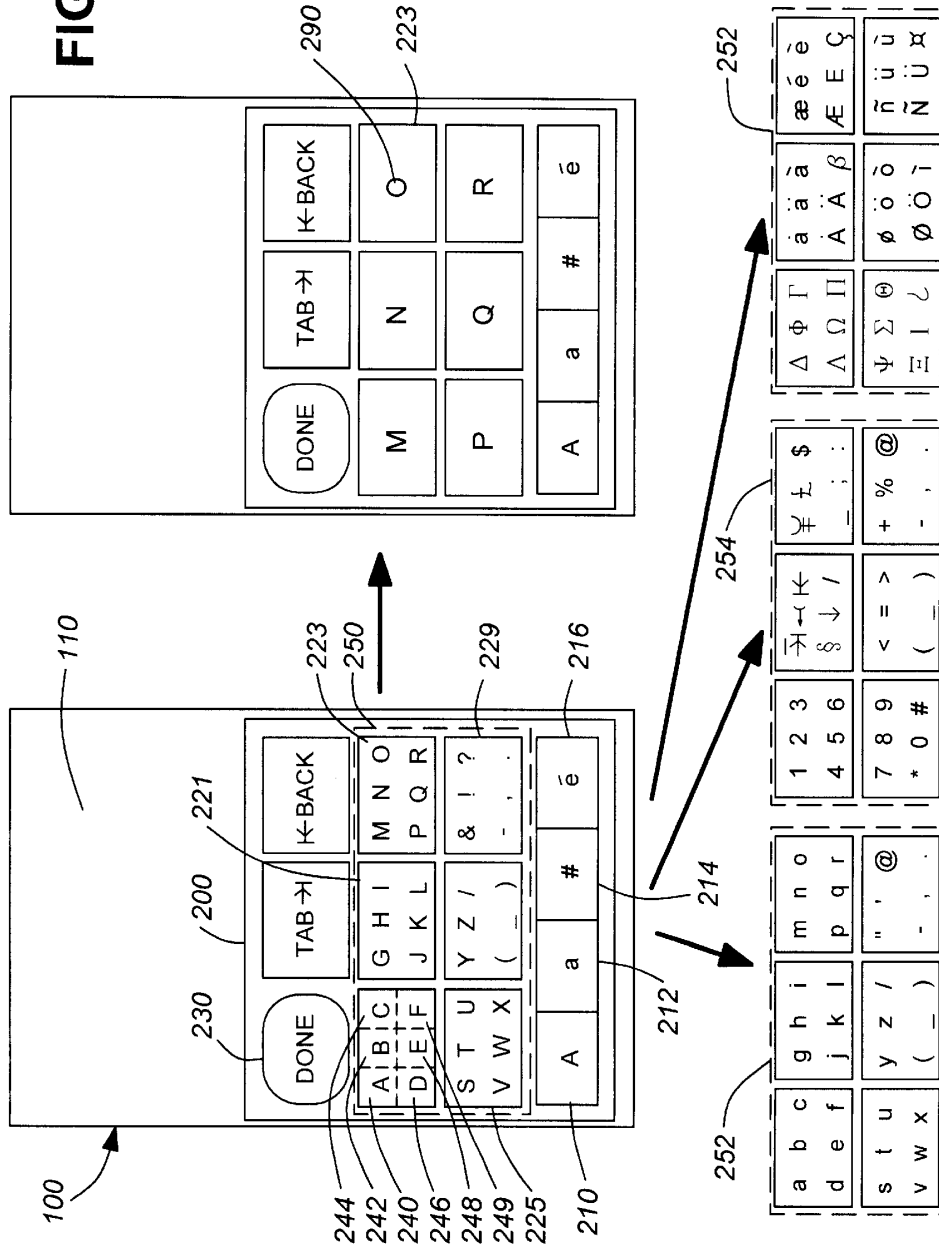


FIG. 1

FIG. 2



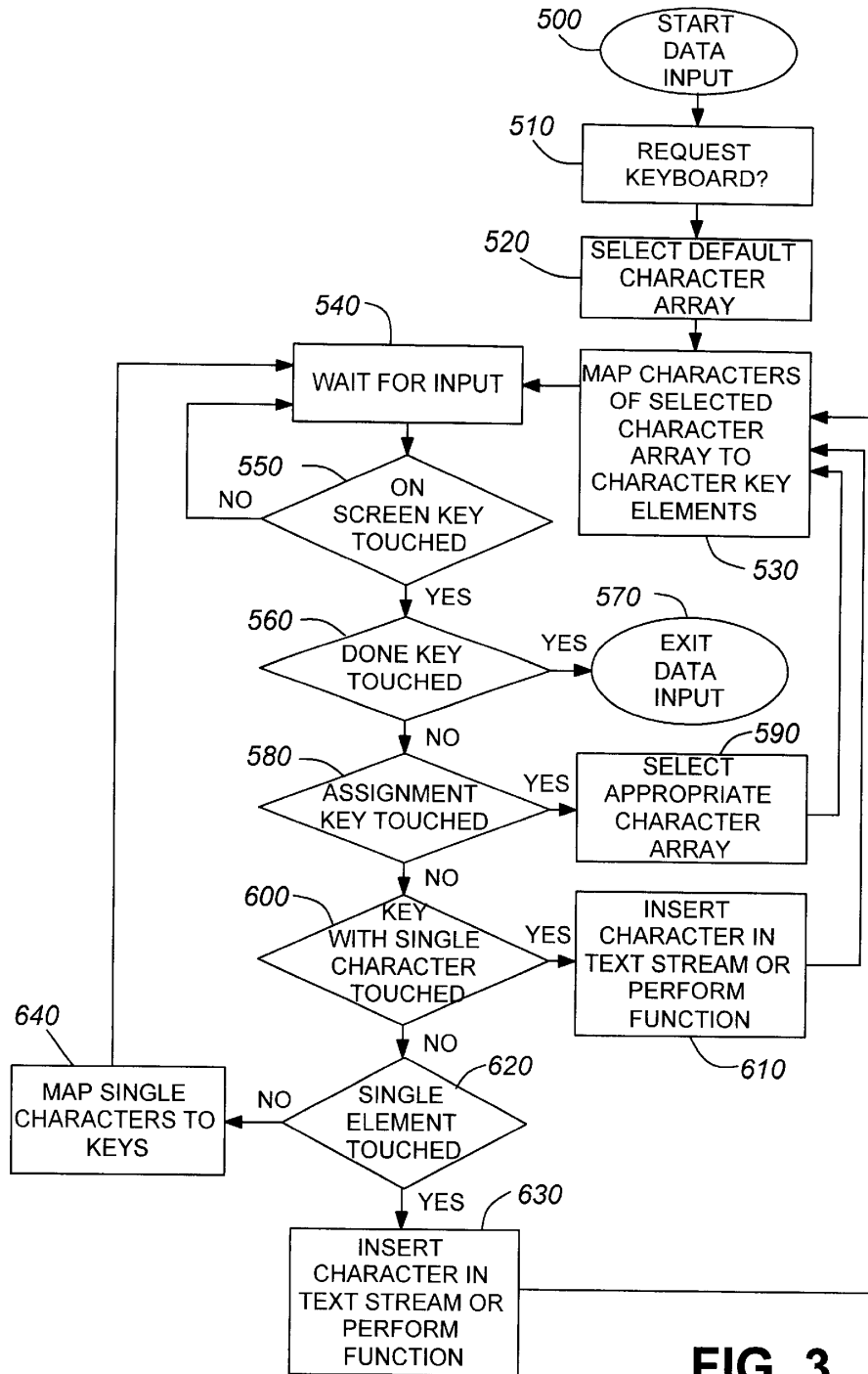
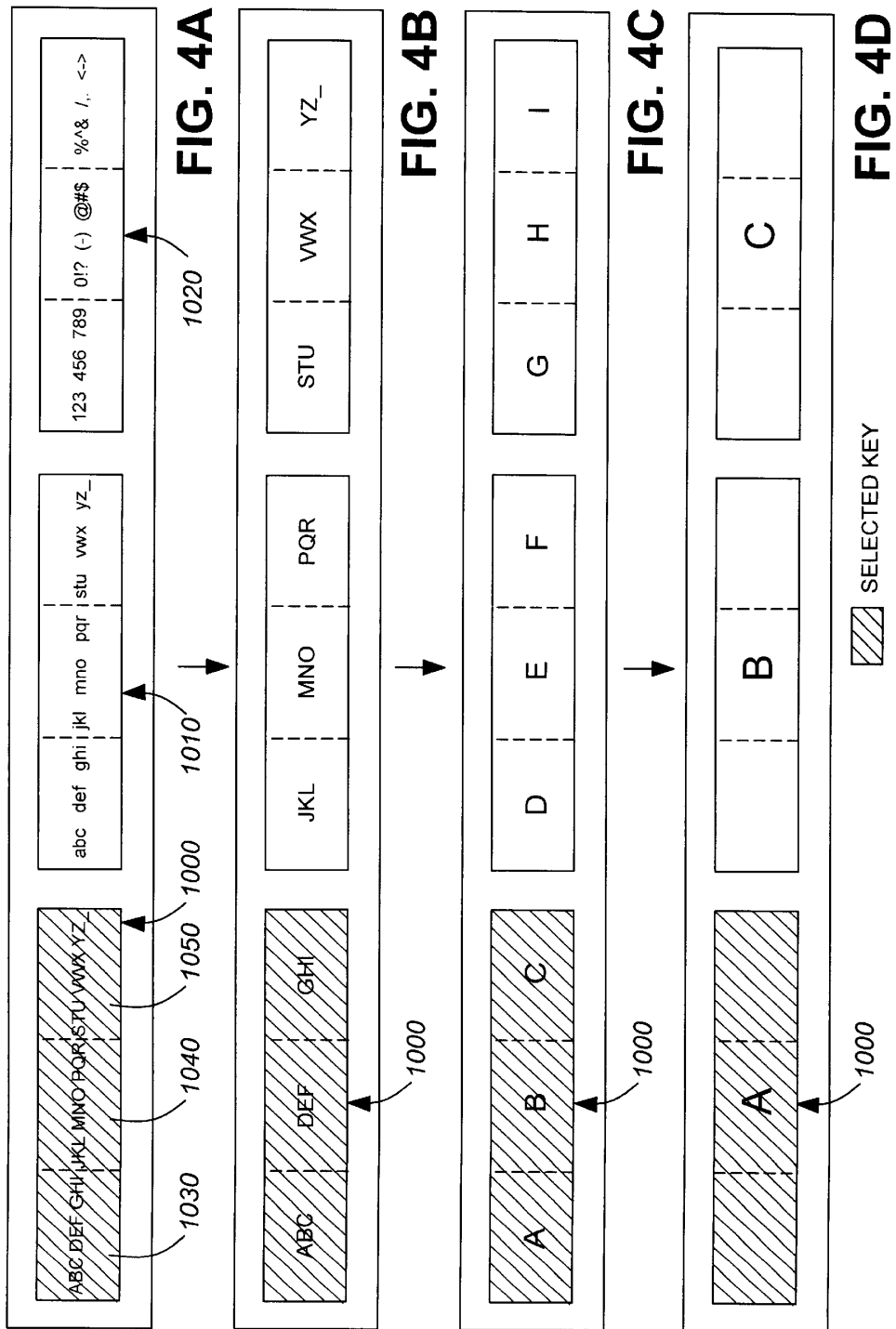


FIG. 3



Explore Litigation Insights

Docket Alarm provides insights to develop a more informed litigation strategy and the peace of mind of knowing you're on top of things.

Real-Time Litigation Alerts



Keep your litigation team up-to-date with **real-time alerts** and advanced team management tools built for the enterprise, all while greatly reducing PACER spend.

Our comprehensive service means we can handle Federal, State, and Administrative courts across the country.

Advanced Docket Research



With over 230 million records, Docket Alarm's cloud-native docket research platform finds what other services can't. Coverage includes Federal, State, plus PTAB, TTAB, ITC and NLRB decisions, all in one place.

Identify arguments that have been successful in the past with full text, pinpoint searching. Link to case law cited within any court document via Fastcase.

Analytics At Your Fingertips



Learn what happened the last time a particular judge, opposing counsel or company faced cases similar to yours.

Advanced out-of-the-box PTAB and TTAB analytics are always at your fingertips.

API

Docket Alarm offers a powerful API (application programming interface) to developers that want to integrate case filings into their apps.

LAW FIRMS

Build custom dashboards for your attorneys and clients with live data direct from the court.

Automate many repetitive legal tasks like conflict checks, document management, and marketing.

FINANCIAL INSTITUTIONS

Litigation and bankruptcy checks for companies and debtors.

E-DISCOVERY AND LEGAL VENDORS

Sync your system to PACER to automate legal marketing.