

## CLAIMS:

1. An image processing method comprising:
  - (a) applying at least a first imaging technique and a second imaging technique to acquire a first, two-dimensional image of at least a first portion of teeth and a second three-dimensional virtual image of at least a second portion of the teeth, respectively, there being at least a partial overlap between said first and second portions; and
  - (b) defining a set of basic landmarks in either one of the two images, locating said set in the other of the two images and registering said set in the two images.
2. A method according to Claim 1, wherein said first image is a longitudinal cross-sectional image.
3. A method according to Claim 2, wherein said first imaging technique is a radiographic x-ray technique.
4. A method according to Claim 3, wherein said first image is cephalometric image.
5. A method according to any one of Claims 1-4, wherein step (a) comprises applying a third imaging technique to acquire a third image comprising at least a profile of facial aspects.
6. A method according to any of Claims 1-4, wherein said three-dimensional image comprises substantially all teeth of at least one jaw, and the two-dimensional image is positioned on the mid palatal plane of the three-dimensional image.
7. A method according to Claim 1, comprising the following step:
  - (c) displacing at least one tooth in at least one of the images in a manner resembling the manner in which said at least one tooth can be shifted in real-life orthodontic treatment; and
  - (d) by applying a set of rules which define manner in which each element in one image maps to a corresponding element in the other image, displacing said at least one tooth in said other image.

exocad GmbH, et. al. Exhibit 1004 - Part 3
---

8. A method according to Claim 7, wherein said set of rules comprise defining in said one image at least one object-associated landmark of said at least one tooth, locating said object-associated landmark, and displacing said object-associated landmark in said other image, in proportion to its movement in said one image.
- 5 9. A method according to Claim 8, wherein said basic landmarks are fixed, the displacement of the at least one object-associated landmark in said one image is defined according to said basic landmarks and said at least one object-associated landmark is then displaced in the same relative displacement in respect of the basic landmarks in said other image.
- 10 10. A method according to any one of Claims 7-9, wherein said one image is a virtual three-dimensional image of a teeth model and said other image is a lateral image.
11. A method according to Claim 10, wherein said lateral image is a cephalometric image.
- 15 12. A method according to Claim 11, comprising the following step:  
(e) by applying a set of rules defining displacement of soft facial tissue caused by displacement of said at least one tooth, predicting effect of the displacement of said at least one tooth in said virtual three-dimensional image on soft facial tissue image in said lateral image.
- 20 13. A method according to Claim 12, wherein the displacement of said soft tissue is predicted using a third image of at least a profile of facial aspects.
14. An image processing system comprising:  
(i) a first utility for receipt of first data representative of a first two-dimensional cross-sectional image of at least a first teeth portion;  
25 (ii) a second utility for receipt of second data representative of a second, three-dimensional virtual image of teeth model of at least a second teeth portion;  
(iii) a module for defining basic landmarks in both images and for generating data representative thereof; and

- (iv) a processor associated with said first and said second utility and with said module, for receiving said first and said second data and for mapping elements in one of the two images to the other of the two images according to the data representative of said basic landmarks.
- 5 15. A system according to Claim 14, wherein said first image is a cephalometric image.
16. A system according to Claim 15, comprising a third utility for receipt of third data representative of a third image comprising at least a profile of facial aspects.
- 10 17. A system according to any one of Claims 13-16, wherein the first, second and third utilities are integral.
18. A system according to any one of Claims 13-17, wherein said second utility comprises a data transferring module for transferring data representative of the second, virtual three-dimensional image to the processor.
- 15 19. A system according to any one of Claim 13-18, comprising a module defining a set of rules for displacing at least one virtual tooth representation in one of the images.
- 20 20. A system according to Claim 19, wherein said set of rules define a displacement representing the manner of shifting of the at least one tooth in a real-life orthodontic treatment.
21. A system according to Claim 19, wherein said processor translates the displacement of said at least one virtual tooth representation in one of the images to displacement of a corresponding tooth in the other image.
22. A system according to Claim 21, wherein said one of the images is a virtual  
25 three-dimensional image of teeth model, and the other image is a cephalometric image.
23. A system according to Claim 22, comprising a module defining a set of rules for predicting the effect of displacement of teeth in the cephalometric image of soft facial tissue.

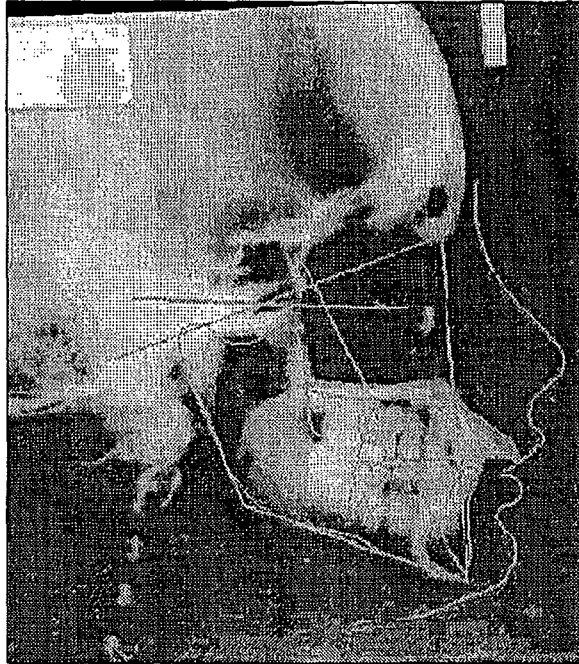


FIG. 1A  
PRIOR ART

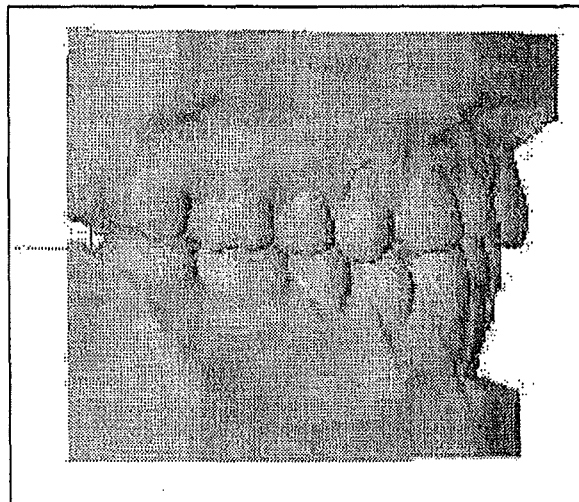


FIG. 1B  
PRIOR ART

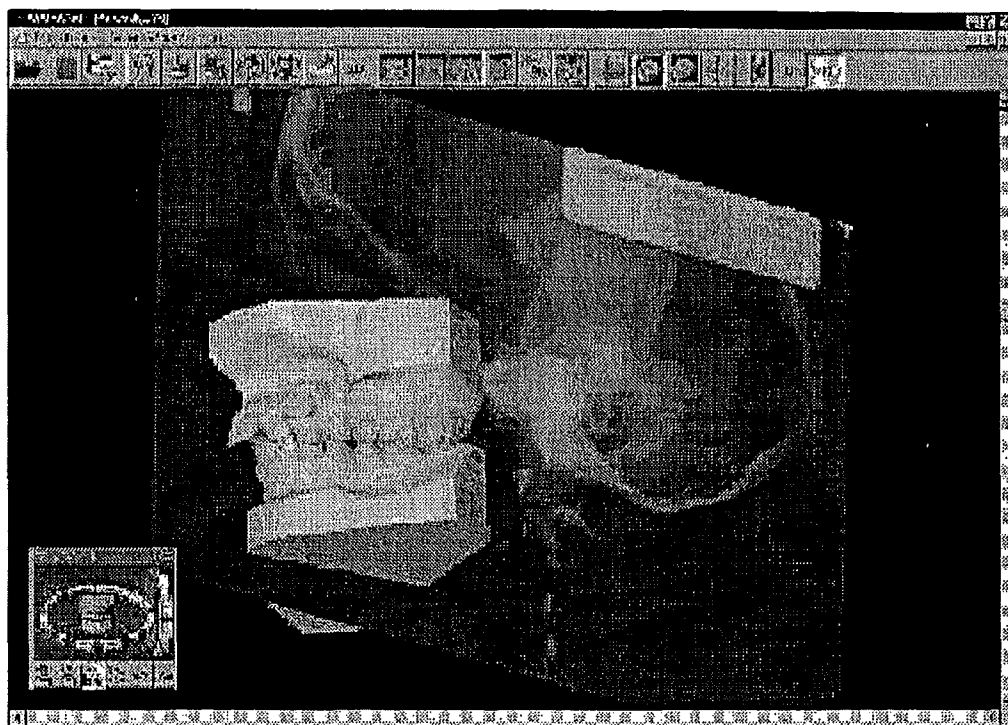


FIG.2

# Explore Litigation Insights

Docket Alarm provides insights to develop a more informed litigation strategy and the peace of mind of knowing you're on top of things.

## Real-Time Litigation Alerts



Keep your litigation team up-to-date with **real-time alerts** and advanced team management tools built for the enterprise, all while greatly reducing PACER spend.

Our comprehensive service means we can handle Federal, State, and Administrative courts across the country.

## Advanced Docket Research



With over 230 million records, Docket Alarm's cloud-native docket research platform finds what other services can't. Coverage includes Federal, State, plus PTAB, TTAB, ITC and NLRB decisions, all in one place.

Identify arguments that have been successful in the past with full text, pinpoint searching. Link to case law cited within any court document via Fastcase.

## Analytics At Your Fingertips



Learn what happened the last time a particular judge, opposing counsel or company faced cases similar to yours.

Advanced out-of-the-box PTAB and TTAB analytics are always at your fingertips.

## API

Docket Alarm offers a powerful API (application programming interface) to developers that want to integrate case filings into their apps.

## LAW FIRMS

Build custom dashboards for your attorneys and clients with live data direct from the court.

Automate many repetitive legal tasks like conflict checks, document management, and marketing.

## FINANCIAL INSTITUTIONS

Litigation and bankruptcy checks for companies and debtors.

## E-DISCOVERY AND LEGAL VENDORS

Sync your system to PACER to automate legal marketing.