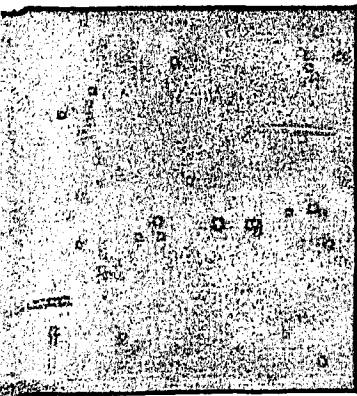
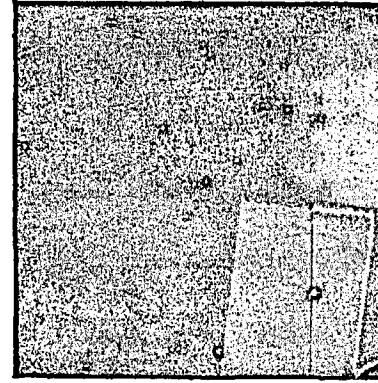
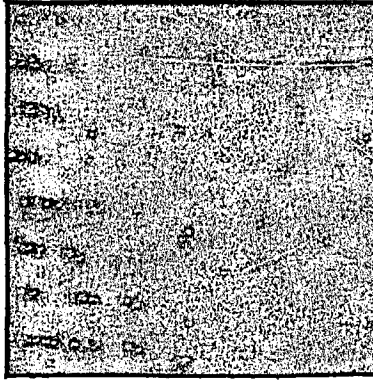
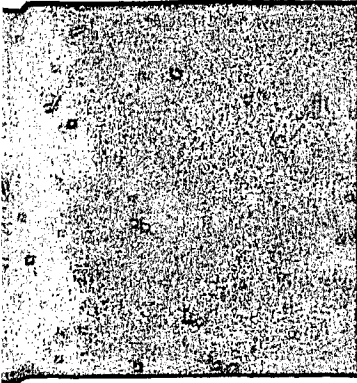
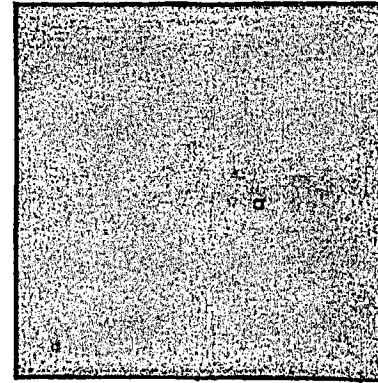
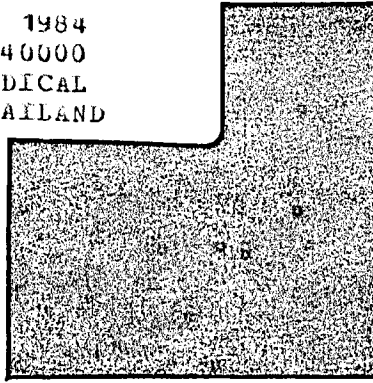
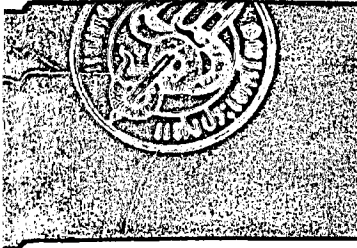


WT J09392
V.67 NO.7 1984
C.D1-----SEQ: J28840000
J: JOURNAL OF THE MEDICAL
ASSOCIATION OF THAILAND



จดหมายเหตุ ทางแพทย

JOURNAL OF
THE MEDICAL
ASSOCIATION
OF THAILAND

ISSN 0125-2208

VOL. 67 NO. 7
JULY 1984

คณะกรรมการบริหาร 2527- 2528

The Council of the Medical Association of Thailand : 1984-1985

นายก	สงคราม ทรัพย์เจริญ
President	Songkram Supecharoen
ผู้ริ่งตำแหน่งนายก	ประกอบ บุรพรัตน์
President Elect	Prakorb Burapharat
อุปนายก	ณรงค์ สาคูดี
Vice-President	Narong Sadudi
เลขาธิการ	ปณิต มิยะเสน
Secretary General	Panata Migasena
ผู้ช่วยเลขาธิการ	วินิต รอดอนันต์
Assistant Secretary General	Vinit Rodanant
ทนายสัญญา	พงษ์ศักดิ์ วิทษากร
Treasurer	Pongsak Viddayakorn
ปฏิคม และประธานฝ่ายประชาสัมพันธ์	ชลช อุปลตวิมฑู
House Master and Chairman : Public Relation	Chalor Kupatawintu

ประธานแผนก Chairmen

วารสารการแพทย์	ประเสริฐ ทองเจริญ
Publication	Prasert Thongcharoen
การประชุมวิชาการ	ประพนธ์ ศกุนตนาถ
Scientific Section	Pralom Sakuntanaga
การศึกษาแพทยศาสตร์และจรรยาบรรณแพทย์	อดุลย์ วิวิธเวทกุล
Medical Education and Ethics	Adulya Viriyavejakul
สวัสดิการ	อารีย์ เจริญพงศ์
Welfare Section	Arrie Charoenphong
ห้องสมุด	เอนก ยิวจิตติ
Library	Anek Yuvachitti
กรรมการกลางและประธานฝ่ายจัดหาทุน	คุณชาล สุนทรเวช
Fund Raising	Kunthon Sundaravej
กรรมการกลางและประธานฝ่ายหาสมาชิก	วิชชัย โชควิวัฒน์
Membership	Vichai Chokvivat

กรรมการกลาง Members of Council

น.ร.ว. ไกรธวัช ศรีธวัช	ตะวัน กังวานพงศ์
M.R.Kraithavej Srithavej	Tawan Kangwanpong
สิงหา เสาวภาพ	ธนา เอื้อการนา
Singha Soavapap	Tana Erkarna
วินิต รอดอนันต์	จำลอง บ่อเกิด
Vinit Rodanant	Chumlong Bawkirt
ขจิต ชูปัญญา	ประกาศน์ เขามนปรีชา
Kachit Choopanya	Prakarsna Chaovanapricha

This material was copied
at the NLM and may be
Subject US Copyright Laws



JOURNAL OF THE MEDICAL ASSOCIATION OF THAILAND

OFFICE : The Medical Association of Thailand,
New Pejburi Rd. , Bangkok 10, Tel. 314-4333

EDITOR

Prasert Thongcharoen

Assistant Editor

Ratana Eamsobhana

EDITORIAL BOARD

Suvit Areekul
Vijit Boonpucknavig
Thavorn Charoonsmith
Krungkrei Chenpanich
Supathana Dejatiwongse
Sant Hathirat
Parttraporn Israngkul
Sophon Kongsamran
Arun Pausawadi
Thada Piamphongsant
Sakdichai Ponprasert
Charn Satapanakul
Stitaya Sirisinha
Sabiang Srivannaboon
Sidhi Techakampuch
Mukda Trishnananda
Preecha Vichitbandha

Pongsom Atthasampunna
Urabala Boonyaparakob
Wirapong Chatranon
Hatai Chitanondh
Vichien Diloksambandh
Thep Himathongkam
Dhanyasobhak Kashemsant
Pornchi Matangkasombut
Praphan Phanupak
Anong Piankijakum
Chawalit Preeyasombat
Samruay Shuangshoti
Visith Sitprijia
Charas Suvanwela
Savanat Tharavanij
Montri Tuchinda
Apichati Vichayanrat

Thavi Boonchoti
Suphachai Chaithiraphan
Kamheang Chaturachinda
Somwang Danchaivijitr
Prasit Futrakul
Direk Israngkul
Priya Khanjanasthiti
Prasert Pacharee
Boriboon Phornphibul
Ukrist Plengvanich
Sompone Punyagupta
Kijja Sindhvananda
Prasit Srisomboon
Vinai Suvatte
Sommai Toongsuwan
Atthasit Vejjajiva
Puangtong Kraiphikul

ADVISORY BOARD

Ouay Ketusingh
Vikit Viranuvatti

Sood Sangvichien
Uthai Dhutiyabhodi

Sukhum Bhadrakom
Natth Bhamarapravati

CIRCULATION MANAGER
Boonrueng Niyomporn

BUSINESS MANAGER
Ittipan Charoenpol

THE JOURNAL OF THE MEDICAL ASSOCIATION OF THAILAND (J. Med. Ass. Thailand) is the official journal published monthly (one volume a year) by the Medical Association of Thailand.

- SUBSCRIPTION RATES**
- Members of Med. Ass. Thailand : no additional charge.
 - Non-members : 400 baht per year (Foreign US. \$ 20) payable in advance.
 - Medical Students : 100 baht per year payable in advance.

 - Single copies and duplicates : 40 baht each (Foreign US. \$ 2)
 - Foreign : Postage included. (surface mail)

- CORRESPONDENCE**
- All correspondence concerning journal subscriptions, order for copies or reprints from the journal, notice of change of address, complaints, and advertising should be addressed to the Business Manager, Department of Microbiology, Faculty of Medicine, Siriraj Hospital (Phone 4110241 ext. 243, 4113111).
 - All articles and notices for publication, general correspondence, and inquiries should be addressed to the Editor, Department of Microbiology, Faculty of Medicine, Siriraj Hospital (Phone 4110241 ext. 448, 4113111).

- PUBLICATION**
- For the type of material acceptable for this journal, and information regarding the processing of manuscripts, proofs, read "A Guide for Contributors" which is published in the January issue of the J. Med. Ass. Thailand and may be obtained from the Editorial Office.

Incidence of Anemia in Leprosy Patients Treated with Dapsone*

*Siripen Puavilai, M.D.,** Saengsuri Chutha, M.D.,** Niwat Polnikorn, M.D.,**
Penwadee Timpatanapong, M.D.,** Pariya Tasanapradit, M.D.,**
Somyot Charuwichitratana, M.D.,** Achara Boonthanom, M.D. **
and Harn Wongwaisayawan, M.D. ***

Dapsone is commonly used for the treatment of leprosy, but it is known to have undesirable hematological side effects. The most common one is hemolysis which occurs in almost every patient taking 200 to 300 mg dapsone per day. Dosages of 100 mg or less in normal healthy persons and 50 mg or less in healthy individuals with glucose-6-phosphate dehydrogenase (G-6-PD) deficiency does not cause hemolysis⁽¹⁾. Methemoglobin is also common and Heinz body formation might occur⁽²⁾. Leukopenia, agranulocytosis, and pseudoleukemia are rare toxic effects of dapsone⁽²⁻⁴⁾.

We have observed several patients treated with dapsone 50-100 mg daily who developed anemia in spite of normal G-6-PD level. The purpose of this paper is to find out the frequency, and onset of anemia in leprosy patients treated with dapsone.

Material and Method

One hundred new cases of leprosy patients seen at Ramathibodi Hospital during 1979-1983 were considered for this study. Patients under 50 kg body weight received 50 mg dapsone per day, for those over 50 kg body weight, 100 mg per day of dapsone was given.

The hemoglobin (Hb), and hematocrit (Hct), glucose-6-phosphate dehydrogenase (G-6-PD) level were determined before the administration of dapsone.

Laboratory tests were done before taking dapsone and at 6 months and one year thereafter. These included complete blood count (CBC), urinalysis, stool examination, reticulocyte count, methemoglobin, Heinz body, Coombs' test, blood urea nitrogen (BUN), creatinine,

lactic dehydrogenase (LDH), serum glutamic oxaloacetic transaminase (SGOT), serum glutamic pyruvic transaminase (SGPT), total protein, albumin, bilirubin and urine hemosiderin pigment. The CBC, reticulocyte count, methemoglobin and Heinz body were also determined at the 2nd week, and at the 1st, 2nd, 3rd, 9th and 12th month after treatment. Of the 100 patients, 43 cases who had hemoglobin below 11 g/100 ml with parasitic infestation and those who could not attend the clinic regularly were excluded from the study. A total of 57 cases were included. The age ranged from 17-68 years. The types of leprosy diagnosed in these patients were indeterminate in 16 cases, tuberculoid 18 cases, borderline tuberculoid 8 cases, borderline lepromatous 7 cases, borderline lepromatous 6 cases, and lepromatous leprosy 2 cases.

Methemoglobin was measured by the method of Evelyn and Malloy⁽⁵⁾.

The data was statistically evaluated by Student's *T* test.

Result

There were 51 cases with normal G-6-PD level and 6 with G-6-PD deficiency. Of the normal G-6-PD group there were 31 males and 20 females. Anemia (hemoglobin dropped one gram per cent or more) developed in 40 cases (78.4%). These included 25 males and 15 females. Of these 40 cases, 15 had a drop of hemoglobin 1 g/100 ml from the baseline, nine had 2 g/100 ml drop, 3 g/100 ml drop in 12 and 4 g/100 ml drop in 4 cases. Significant anemia ($P < 0.05$) developed

* Supported by The Faculty of Medicine, Research Foundation, Ramathibodi Hospital, Mahidol University, Grant Number D 38/1980.

**Department of Medicine, Faculty of Medicine, Ramathibodi Hospital, Mahidol University, Bangkok 10400, Thailand.

Explore Litigation Insights

Docket Alarm provides insights to develop a more informed litigation strategy and the peace of mind of knowing you're on top of things.

Real-Time Litigation Alerts



Keep your litigation team up-to-date with **real-time alerts** and advanced team management tools built for the enterprise, all while greatly reducing PACER spend.

Our comprehensive service means we can handle Federal, State, and Administrative courts across the country.

Advanced Docket Research



With over 230 million records, Docket Alarm's cloud-native docket research platform finds what other services can't. Coverage includes Federal, State, plus PTAB, TTAB, ITC and NLRB decisions, all in one place.

Identify arguments that have been successful in the past with full text, pinpoint searching. Link to case law cited within any court document via Fastcase.

Analytics At Your Fingertips



Learn what happened the last time a particular judge, opposing counsel or company faced cases similar to yours.

Advanced out-of-the-box PTAB and TTAB analytics are always at your fingertips.

API

Docket Alarm offers a powerful API (application programming interface) to developers that want to integrate case filings into their apps.

LAW FIRMS

Build custom dashboards for your attorneys and clients with live data direct from the court.

Automate many repetitive legal tasks like conflict checks, document management, and marketing.

FINANCIAL INSTITUTIONS

Litigation and bankruptcy checks for companies and debtors.

E-DISCOVERY AND LEGAL VENDORS

Sync your system to PACER to automate legal marketing.