



US 20080012036A1

(19) **United States**

(12) **Patent Application Publication** (10) **Pub. No.: US 2008/0012036 A1**

**Loh et al.**

(43) **Pub. Date: Jan. 17, 2008**

(54) **LEADFRAME-BASED PACKAGES FOR SOLID STATE LIGHT EMITTING DEVICES AND METHODS OF FORMING LEADFRAME-BASED PACKAGES FOR SOLID STATE LIGHT EMITTING DEVICES**

**Publication Classification**

(51) **Int. Cl.**  
*H01L 33/00* (2006.01)  
*H01L 21/00* (2006.01)  
(52) **U.S. Cl.** ..... **257/99**; 438/26; 257/E33; 257/E21

(76) **Inventors: Ban P. Loh**, Durham, NC (US);  
**Nicholas W. Medendorp JR.**, Raleigh, NC (US);  
**Eric Tarsa**, Goleta, CA (US);  
**Bernd Keller**, Santa Barbara, CA (US)

(57) **ABSTRACT**

A modular package for a light emitting device includes a leadframe including a first region having a top surface, a bottom surface and a first thickness and a second region having a top surface, a bottom surface and a second thickness that is less than the first thickness. The leadframe further includes an electrical lead extending laterally away from the second region, and the package further includes a thermoset package body on the leadframe and surrounding the first region. The thermoset package body may be on both the top and bottom surfaces of the second region. A leak barrier may be on the leadframe, and the package body may be on the leak barrier. Methods of forming modular packages including thermoset package bodies on leadframes are also disclosed.

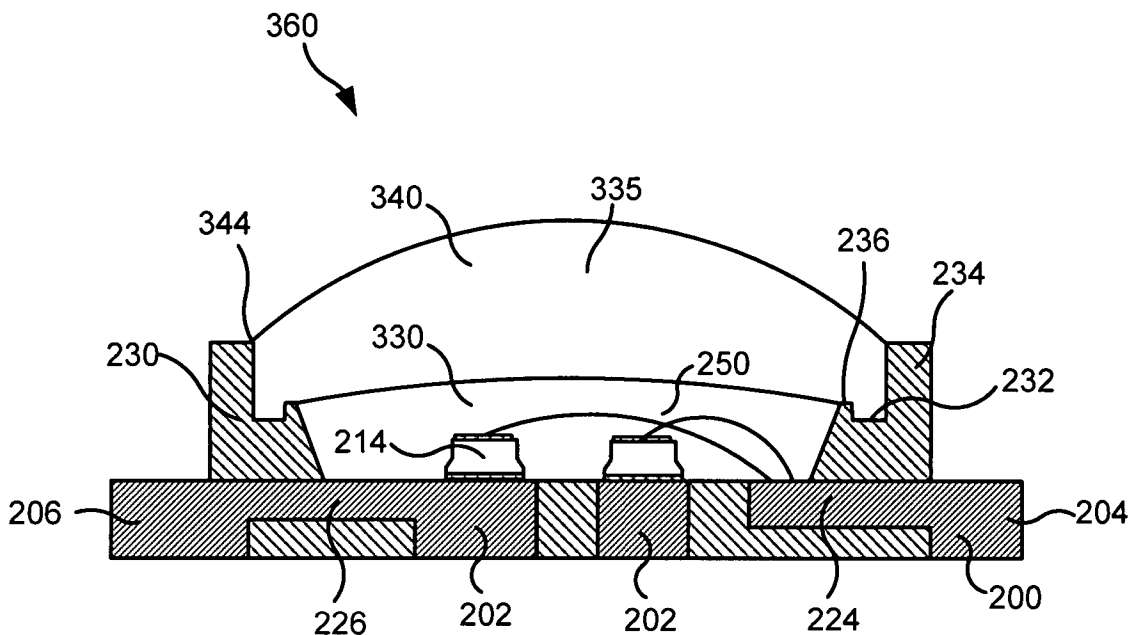
Correspondence Address:  
**MYERS BIGEL SIBLEY & SAJOVEC, P.A.**  
**P.O. BOX 37428**  
**RALEIGH, NC 27627 (US)**

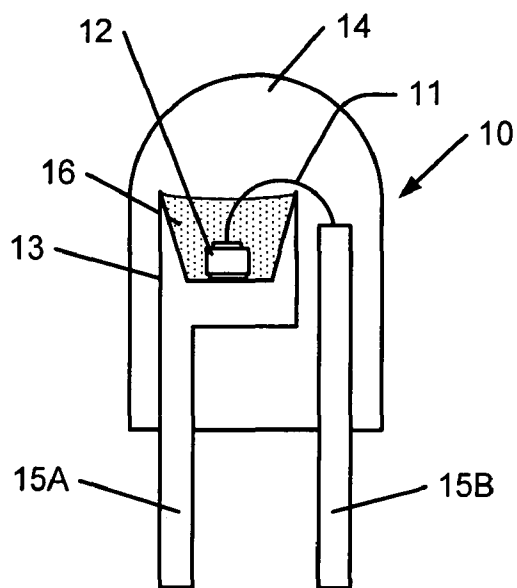
(21) **Appl. No.: 11/657,347**

(22) **Filed: Jan. 24, 2007**

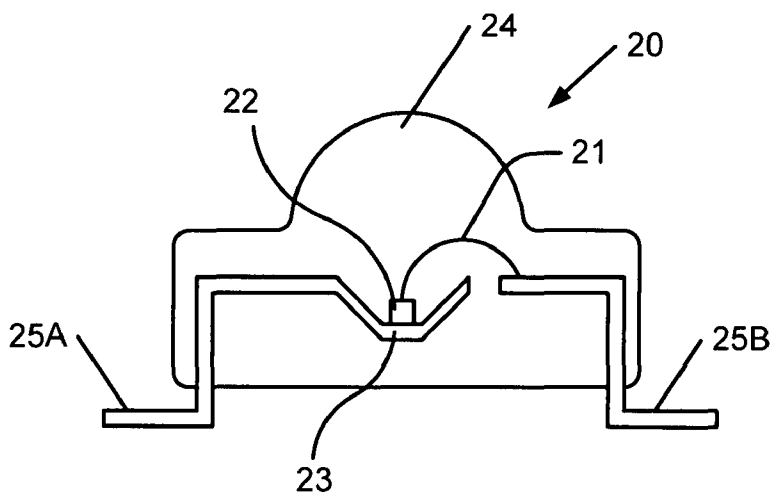
**Related U.S. Application Data**

(63) Continuation-in-part of application No. 11/486,244, filed on Jul. 13, 2006.



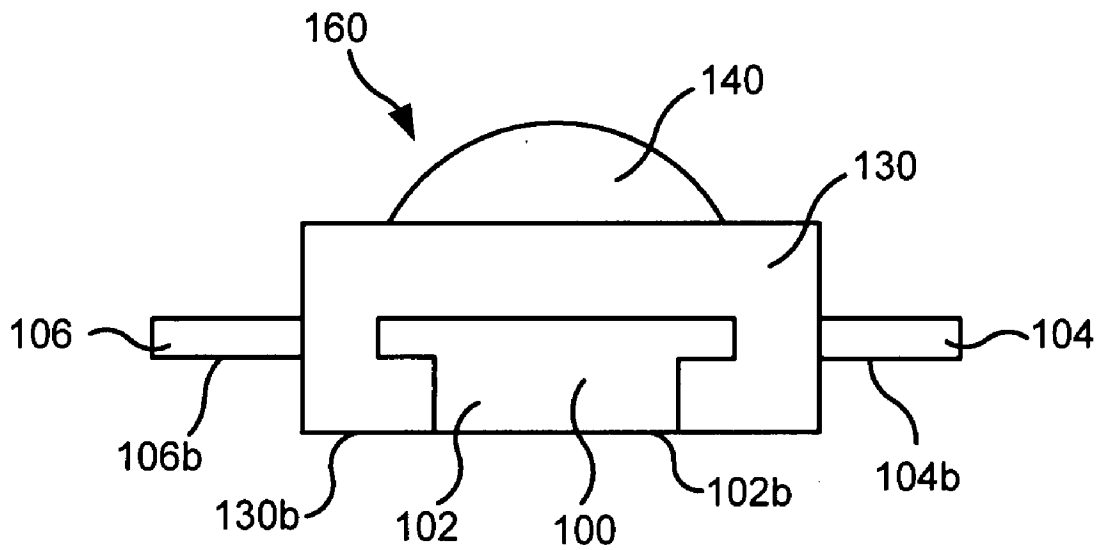


**FIG. 1A**  
**PRIOR ART**

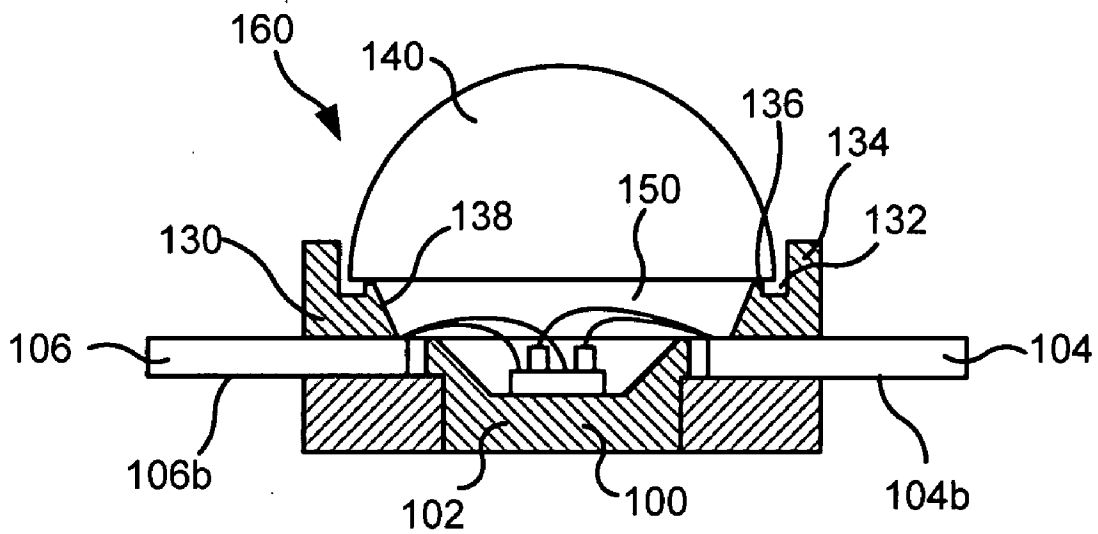


**FIGURE 1B**  
**PRIOR ART**

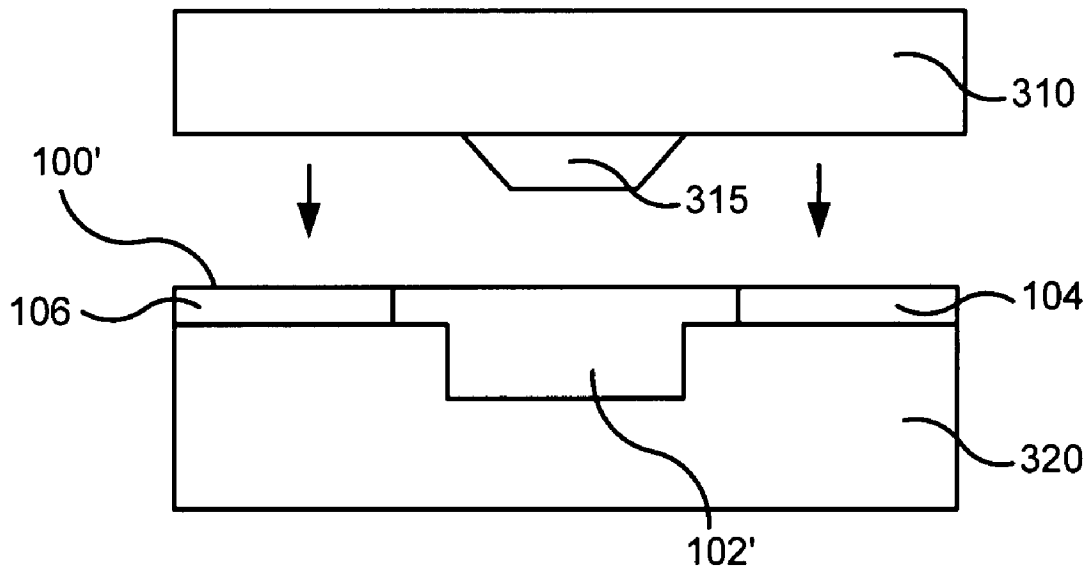




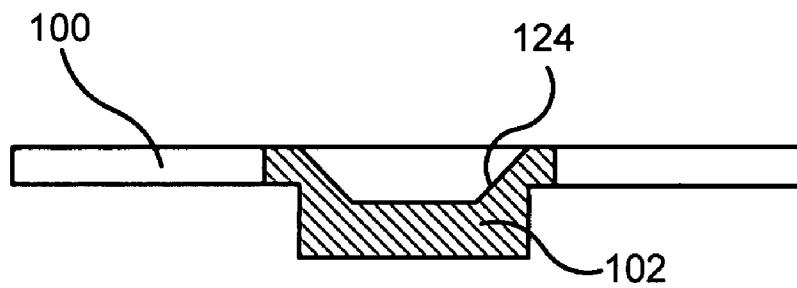
**FIGURE 3A**



**FIGURE 3B**



**FIGURE 4A**



**FIGURE 4B**

# Explore Litigation Insights

Docket Alarm provides insights to develop a more informed litigation strategy and the peace of mind of knowing you're on top of things.

## Real-Time Litigation Alerts



Keep your litigation team up-to-date with **real-time alerts** and advanced team management tools built for the enterprise, all while greatly reducing PACER spend.

Our comprehensive service means we can handle Federal, State, and Administrative courts across the country.

## Advanced Docket Research



With over 230 million records, Docket Alarm's cloud-native docket research platform finds what other services can't. Coverage includes Federal, State, plus PTAB, TTAB, ITC and NLRB decisions, all in one place.

Identify arguments that have been successful in the past with full text, pinpoint searching. Link to case law cited within any court document via Fastcase.

## Analytics At Your Fingertips



Learn what happened the last time a particular judge, opposing counsel or company faced cases similar to yours.

Advanced out-of-the-box PTAB and TTAB analytics are always at your fingertips.

## API

Docket Alarm offers a powerful API (application programming interface) to developers that want to integrate case filings into their apps.

## LAW FIRMS

Build custom dashboards for your attorneys and clients with live data direct from the court.

Automate many repetitive legal tasks like conflict checks, document management, and marketing.

## FINANCIAL INSTITUTIONS

Litigation and bankruptcy checks for companies and debtors.

## E-DISCOVERY AND LEGAL VENDORS

Sync your system to PACER to automate legal marketing.