

DECLARATION OF MICHELLE L. WARMATH

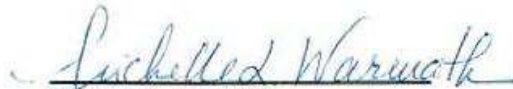
I, Michelle L. Warmath, pursuant to 28 U.S.C. § 1746, hereby declare as follows:

1. I am a Freelance Vendor at TransPerfect, Inc.
2. I submit this declaration to certify the accuracy of the English translation of French Republic Patent No. 2,650,982 ("Silvestre").
3. My statements are based on personal knowledge and my review of the Silvestre patent and its French-to-English translation. If called as a witness about the facts contained in these statements, I could testify competently based on such personal knowledge and the investigation I have conducted.
4. Attached as Exhibit A is a true and accurate copy of French Republic Patent No. 2,650,982 ("Silvestre").
5. Attached as Exhibit B is a true and accurate copy of an English translation of French Republic Patent No. 2,650,982 ("Silvestre Translation").
6. The Silvestre Translation is a true and accurate translation of Silvestre from French into English.
7. All statements made herein of my own knowledge are true, and all statements made on information and belief are believed to be true. Further, I am aware that these statements are made with the knowledge that willful false statements and the like so made are punishable by

fine or imprisonment, or both, under 18 U.S.C. § 1001. I declare under penalty of perjury that to the best of my knowledge, the foregoing is true and correct.

8. I also understand that by submitting this declaration I may be asked to appear for a deposition asking me questions limited to the material in my declaration. With my signature below, I agree to make reasonable efforts to make myself available for such a deposition at a reasonable place and time of my choosing.


I declare under penalty of perjury that the foregoing is true and correct to the best of my knowledge. Executed on January 13, 2018 in Berlin, Connecticut.


Michelle L. Warmath

I, Aurora Landman, hereby certify that the document, “FR2650982” is, to the best of my knowledge and belief, a true and accurate translation from French into English.


Aurora Landman

Sworn to before me this
November 22, 2017


Signature, Notary Public



Stamp, Notary Public

LANGUAGE AND TECHNOLOGY SOLUTIONS FOR GLOBAL BUSINESS
THREE PARK AVENUE, 39TH FLOOR, NEW YORK, NY 10016 | T 212.689.5555 | F 212.689.1059 | WWW.TRANSPECT.COM
OFFICES IN 90 CITIES WORLDWIDE

19. FRENCH REPUBLIC

NATIONAL INSTITUTE OF
INDUSTRIAL PROPERTY

PARIS

11. **Publication No.:**
(to be used only for
ordering copies)

2 650 982

21. **National Registration No.:**

89 11192

51. Int Cl⁵: **B 60 R 1/08**

12.

APPLICATION FOR PATENT

A1

22. **Date of filing:** August 18, 1989

30. **Priority:**

43. **Date application made available to the public:** "Patents" Bulletin No. 8, February 22, 1991

60. **References to other related national documents:**

71. **Applicant(s):** SILVESTRE Aimé and GENIN Jean-Georges — FR

72. **Inventor(s):** Aimé Silvestre; Jean-Georges Genin

73. **Holder(s):**

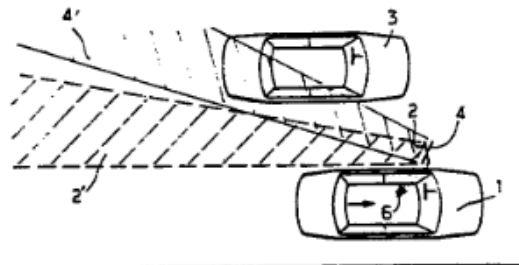
74. **Attorney(s):** Beau de Loménie Law Office

54. **Windshield wiper comprising an improved device for connection of a principal frame to a secondary frame.**

57. An object of the invention is dual rearview mirrors intended to be placed on the exterior of a vehicle on the driver's side.

A rearview mirror according to the invention comprises a regulation principal mirror 2, and an auxiliary mirror 4 superimposed thereon, which has the same width and a height on the order of one half that of the principal mirror. The two mirrors are interdependent and their projections on a horizontal plane form an angle between them of between 8° and 10°, which is oriented so that the field of the auxiliary mirror is in front of the field of the principal mirror.

An application is equipment for motor vehicles.



FR 2 650 982 - A1

Copies available from IMPRIMERIE NATIONALE, 27, rue de la Convention - 75732 Paris Cedex 15

Exterior rearview mirror located
on the driver's side

DESCRIPTION

5 The present invention relates to exterior rearview mirrors located on the driver's side of motor vehicles.

 The technical field of the invention is the manufacture of automobile accessories. Current regulations in most countries require that motor vehicles be equipped with an interior rearview mirror and an exterior rearview mirror located on the driver's side to allow the driver to see vehicles coming from behind preparing to pass.

 Because of the relative position of the driver's eyes and the rearview mirrors, and the usual dimensions thereof, the field of the two rearview mirrors does not cover part of the road on the side of the vehicle where the driver is, so that the driver risks changing lanes without seeing that another vehicle is already preparing to pass, a frequent cause of accidents.

15 Already known are vehicles equipped with two exterior rearview mirrors located on the driver's side which can be oriented independent of each other. The solution is not satisfactory because the angle between the two rearview mirrors must be adjusted with great precision so that the fields of the two mirrors complement each other.

 The objective of the present invention is to obtain new dual rearview mirrors that are interdependent and which form angles between them that are said permanently by the manufacturer to a precise value that results in the best rearward visibility.

 An exterior rearview mirror according to the invention comprises a principal mirror and an auxiliary mirror, which are flat, superimposed, interdependent mirrors and the respective sections of the two mirrors along horizontal planes form between them a constant angle of between 8° and 10° and preferably equal to 9°, and the auxiliary mirror is angularly offset in a direction such that its field is located in front of the field of the principal mirror.

 Advantageously the two mirrors are rectangular, have the same width, and the auxiliary mirror is situated above the principal mirror and is of a height on the order of one half that of the principal mirror.

30

Explore Litigation Insights

Docket Alarm provides insights to develop a more informed litigation strategy and the peace of mind of knowing you're on top of things.

Real-Time Litigation Alerts



Keep your litigation team up-to-date with **real-time alerts** and advanced team management tools built for the enterprise, all while greatly reducing PACER spend.

Our comprehensive service means we can handle Federal, State, and Administrative courts across the country.

Advanced Docket Research



With over 230 million records, Docket Alarm's cloud-native docket research platform finds what other services can't. Coverage includes Federal, State, plus PTAB, TTAB, ITC and NLRB decisions, all in one place.

Identify arguments that have been successful in the past with full text, pinpoint searching. Link to case law cited within any court document via Fastcase.

Analytics At Your Fingertips



Learn what happened the last time a particular judge, opposing counsel or company faced cases similar to yours.

Advanced out-of-the-box PTAB and TTAB analytics are always at your fingertips.

API

Docket Alarm offers a powerful API (application programming interface) to developers that want to integrate case filings into their apps.

LAW FIRMS

Build custom dashboards for your attorneys and clients with live data direct from the court.

Automate many repetitive legal tasks like conflict checks, document management, and marketing.

FINANCIAL INSTITUTIONS

Litigation and bankruptcy checks for companies and debtors.

E-DISCOVERY AND LEGAL VENDORS

Sync your system to PACER to automate legal marketing.