



US006961586B2

(12) **United States Patent**  
**Barbosa et al.**

(10) **Patent No.:** **US 6,961,586 B2**  
(45) **Date of Patent:** **Nov. 1, 2005**

(54) **FIELD ASSESSMENTS USING HANDHELD DATA MANAGEMENT DEVICES**

(75) Inventors: **Frank A. Barbosa**, Carrollton, TX (US); **Luis M. Ortiz**, Dallas, TX (US)

(73) Assignee: **Field Data Management Solutions, LLC**, Albuquerque, NM (US)

(\* ) Notice: Subject to any disclaimer, the term of this patent is extended or adjusted under 35 U.S.C. 154(b) by 392 days.

(21) Appl. No.: **09/955,543**

(22) Filed: **Sep. 17, 2001**

(65) **Prior Publication Data**

US 2004/0192329 A1 Sep. 30, 2004

**Related U.S. Application Data**

(60) Provisional application No. 60/233,120, filed on Sep. 18, 2000.

(51) **Int. Cl.**<sup>7</sup> ..... **H04M 1/00**

(52) **U.S. Cl.** ..... **455/556.1; 455/566.2; 455/90.3; 705/2**

(58) **Field of Search** ..... **455/556.1, 556.2, 455/66.1, 90.1, 90.2, 90.3; 705/1, 2**

(56) **References Cited**

**U.S. PATENT DOCUMENTS**

5,444,615 A \* 8/1995 Bennett et al. .... 705/8  
5,561,446 A \* 10/1996 Montlick ..... 345/173

5,990,932 A \* 11/1999 Bee et al. .... 348/14.08  
6,064,968 A \* 5/2000 Schanz ..... 705/1  
6,083,353 A \* 7/2000 Alexander, Jr. .... 202/158  
6,172,620 B1 \* 1/2001 Brick et al. .... 341/22  
6,650,647 B1 \* 11/2003 Ishikawa et al. .... 370/400  
6,662,193 B1 \* 12/2003 Christensen ..... 707/104.1

**FOREIGN PATENT DOCUMENTS**

JP 408055161 A \* 2/1996 ..... G06F 17/60

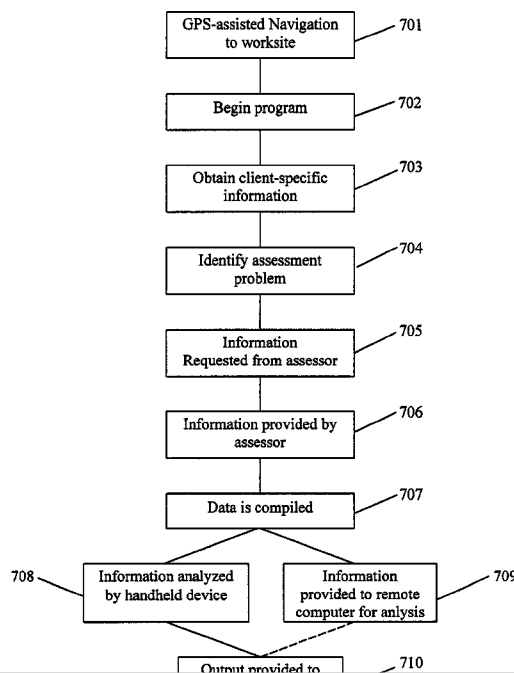
\* cited by examiner

*Primary Examiner*—Melur Ramakrishnaiah

(57) **ABSTRACT**

Systems for and methods of conducting field assessments utilizing handheld data management devices are disclosed. Methods and systems for executing field assessments use handheld devices provide assessors portable access to industry-specific programs and data useful in carrying out a field assessment. Field assessment data synchronization and/or delivery is enabled using wireless capabilities resident in handheld personal computing devices. Data may be synchronized with a server over a network using wireless radio transmission, or directly to a computer workstation using wireless infrared or radio transmission or connected means (e.g., modems, cradles, docking stations). It is another aspect of the present invention to provide for two-way communication between remote computing means (e.g., servers, desktop computers) and handheld data management devices to facilitate real-time access to remote programs, assistance and/or information related to the field assessment being undertaken by using a handheld data management device user.

**32 Claims, 9 Drawing Sheets**



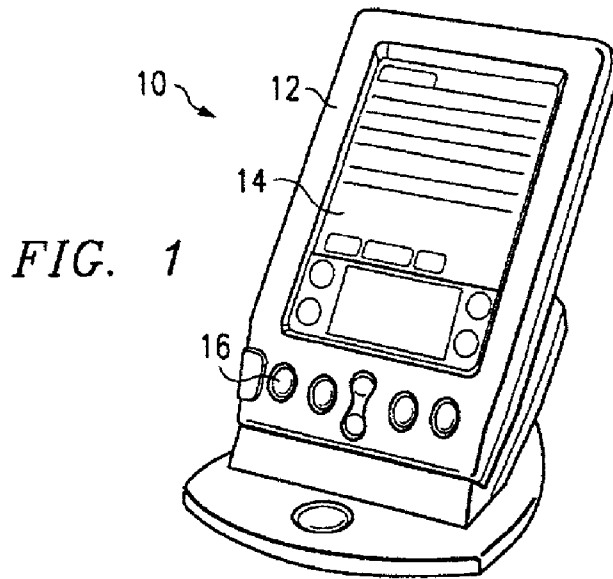


FIG. 1

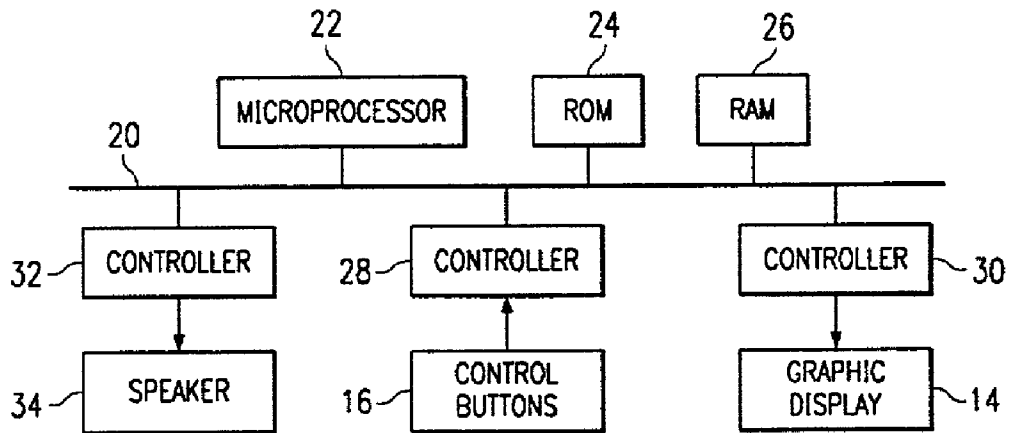


FIG. 2

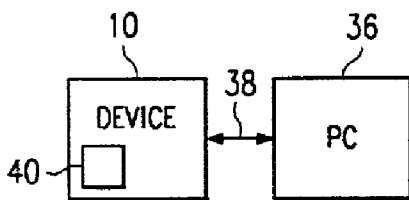


FIG. 3

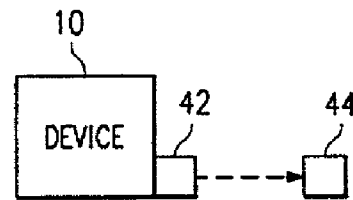


FIG. 4



FIG. 5

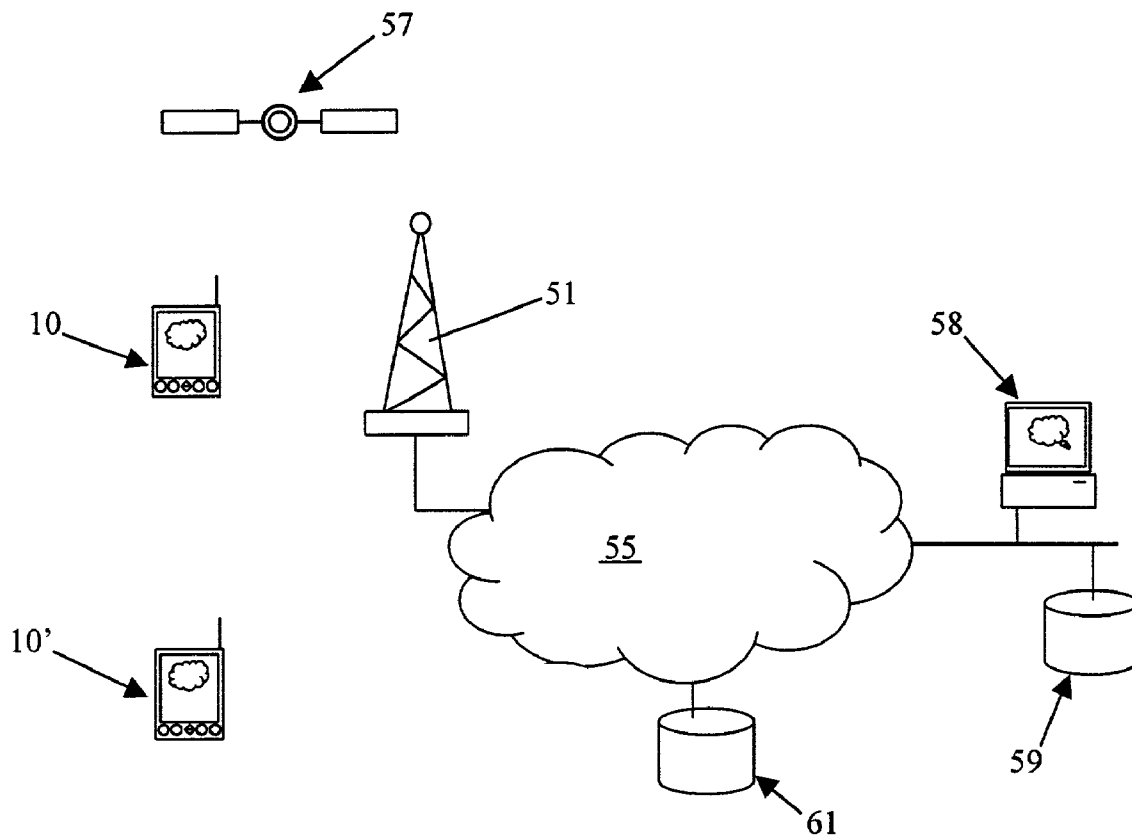


FIG. 6

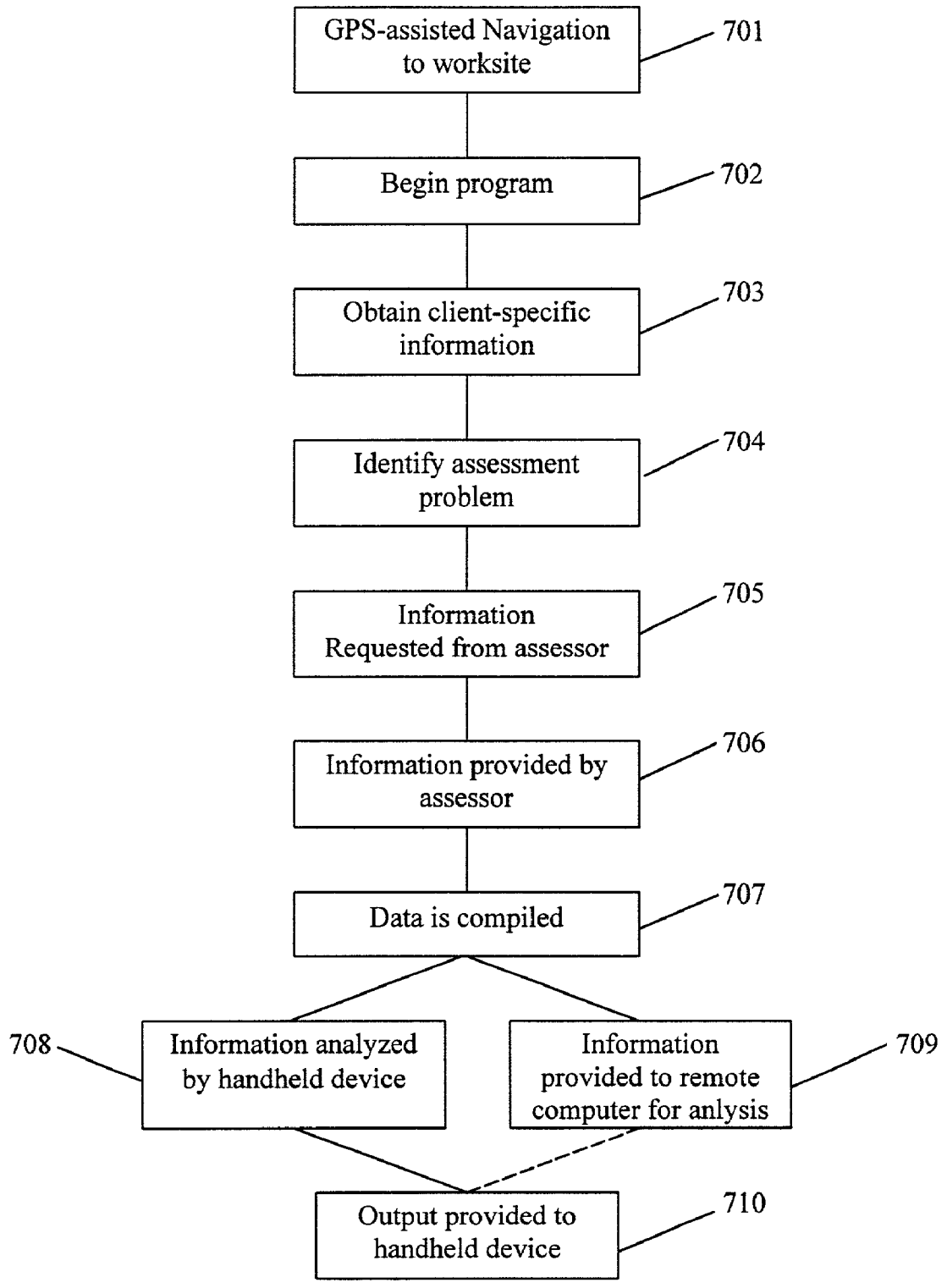


FIG. 3

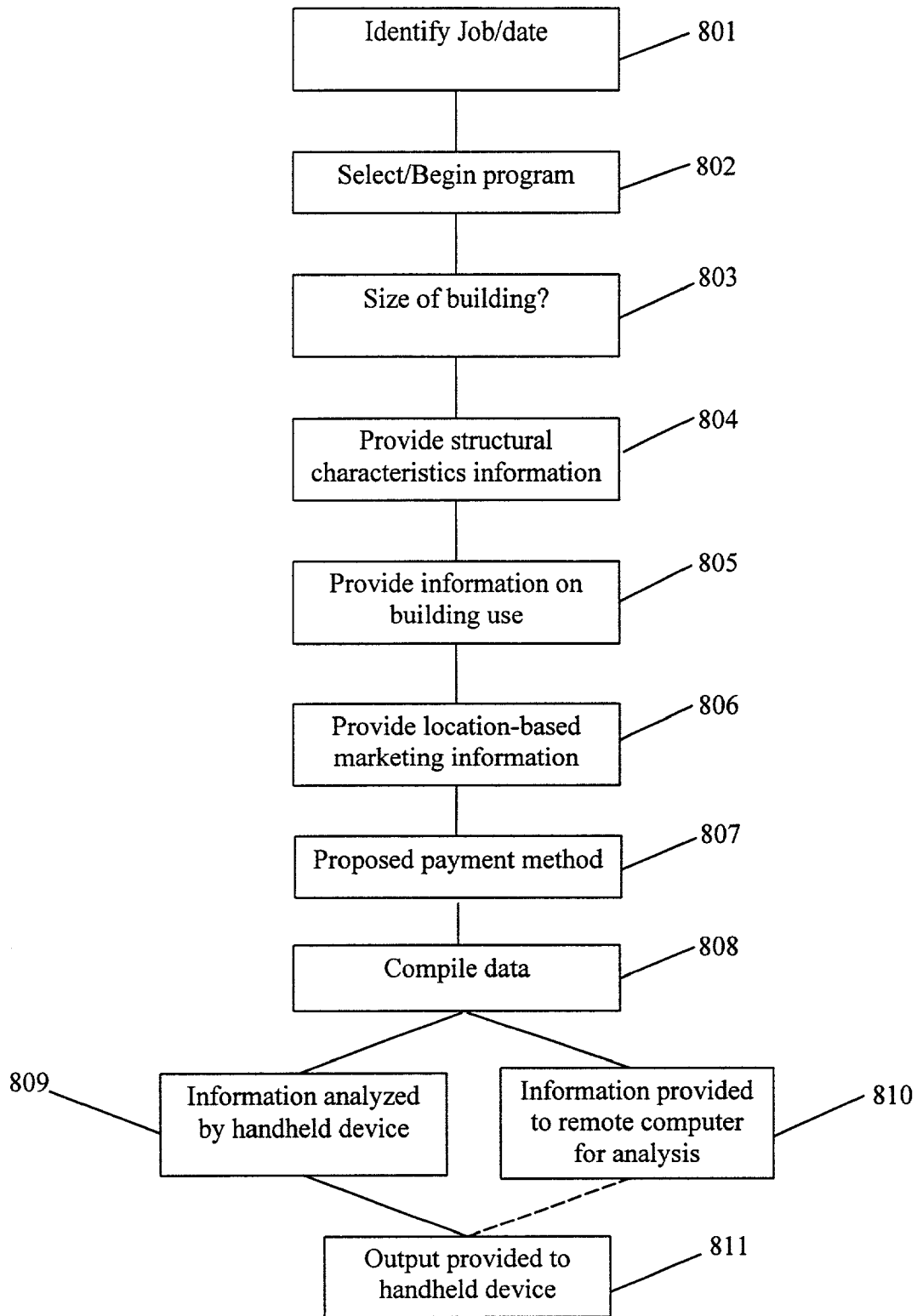


FIG. 8

# Explore Litigation Insights

Docket Alarm provides insights to develop a more informed litigation strategy and the peace of mind of knowing you're on top of things.

## Real-Time Litigation Alerts



Keep your litigation team up-to-date with **real-time alerts** and advanced team management tools built for the enterprise, all while greatly reducing PACER spend.

Our comprehensive service means we can handle Federal, State, and Administrative courts across the country.

## Advanced Docket Research



With over 230 million records, Docket Alarm's cloud-native docket research platform finds what other services can't. Coverage includes Federal, State, plus PTAB, TTAB, ITC and NLRB decisions, all in one place.

Identify arguments that have been successful in the past with full text, pinpoint searching. Link to case law cited within any court document via Fastcase.

## Analytics At Your Fingertips



Learn what happened the last time a particular judge, opposing counsel or company faced cases similar to yours.

Advanced out-of-the-box PTAB and TTAB analytics are always at your fingertips.

## API

Docket Alarm offers a powerful API (application programming interface) to developers that want to integrate case filings into their apps.

## LAW FIRMS

Build custom dashboards for your attorneys and clients with live data direct from the court.

Automate many repetitive legal tasks like conflict checks, document management, and marketing.

## FINANCIAL INSTITUTIONS

Litigation and bankruptcy checks for companies and debtors.

## E-DISCOVERY AND LEGAL VENDORS

Sync your system to PACER to automate legal marketing.