



**EXHIBIT C - INVALIDITY CLAIM CHART FOR ALL ASSERTED CLAIMS BASED ON 2001 GMT800
IN VIEW OF ONE OR MORE OF THE NOTED SECONDARY REFERENCES**

A. U.S. Patent No. 7,934,843

	Claim 15 (depends on claim 1)	2001 GMT800 Mirror
a.	1. An exterior sideview mirror system suitable for use on an automobile, said exterior sideview mirror system comprising:	<p>The 2001 GMT800 Mirror (which was used for, <i>inter alia</i>, the 2001 Chevrolet) is an exterior sideview mirror system suitable for use on an automobile.</p> <div data-bbox="610 978 1192 1495" style="border: 1px solid black; padding: 5px; text-align: center;">  <p>2001 Chevrolet Sierra/Silverado Trailer Tow Mirror</p> </div>
b.	an exterior sideview mirror assembly adapted for attachment to a side of an automobile;	The 2001 GMT800 Mirror is an exterior sideview mirror assembly adapted for attachment to a side of an automobile.
c.	said exterior sideview mirror assembly including a reflective element having a rearward field of view when attached to the side of the	The 2001 GMT800 Mirror includes a reflective element having a rearward field of view when attached to the side of the automobile.

	automobile;	
d.	<p>said reflective element attached to an electrically-operated actuator of said exterior sideview mirror assembly and movable by said actuator in order to position said rearward field of view to a driver-desired position when said exterior sideview mirror assembly is attached to the side of the automobile;</p>	<p>The 2001 GMT800 Mirror includes said reflective element attached to an electrically-operated actuator of said exterior sideview mirror assembly and movable by said actuator in order to position said rearward field of view to a driver-desired position when said exterior sideview mirror assembly is attached to the side of the automobile. <i>See, e.g.,</i> 2001 Chevrolet Silverado Owner's Manual, 2001 Chevrolet Silverado Owner's Manual, 2001 Chevrolet Silverado Owner's Manual.</p> <div data-bbox="613 829 1258 1507" style="border: 1px solid gray; padding: 10px;"> <p style="text-align: center;">Electric Outside Rearview Mirrors (If Equipped)</p> <div style="display: flex; align-items: center;">  <div style="margin-left: 10px;"> <p>The control is located on the driver's door armrest.</p> </div> </div> <p>Move the upper control to the left or right to choose the mirror you want to adjust, then press the arrows on the lower control pad to adjust the mirror.</p> </div> <p>To the extent the 2001 GMT800 Mirror does not disclose said reflective element attached to an electrically-operated actuator of said exterior sideview mirror assembly and movable by said actuator in order to position said rearward field of view to a driver-desired position when said exterior sideview mirror assembly is attached to the side of the automobile, a POSITA would have no knowledge of the GMT800 Platform Trailer Towing Mirror alone or in combination with other references.</p> <p><i>See</i> discussion of element d in the claim chart for the 2001 Dodge Ram mirror.</p>

See discussion of element d in the claim chart for the 2001 GMT800 mirror.

See discussion of element d in the claim chart for Platzer 956.

See discussion of element d in the claim chart for Platzer 731.

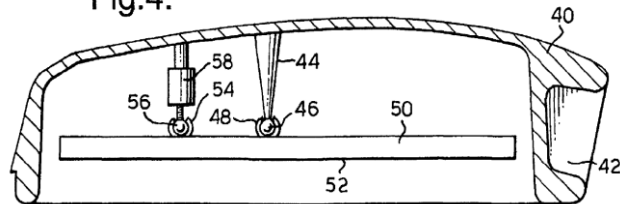
See discussion of element d in the claim chart for Henion 013.

See discussion of this element in the claim chart for Lynam 026.

See EP0864465B1:

“The reflective member 50 has a second integrally moulded socket form which engages with a spherical formation 56 of a screw jack drive unit 58, which may be as described in EP-A-0272047, and which includes an electric motor. The reflective member 50 to be pivoted relative to the housing 40 about an axis through the spherical formation 46 perpendicular to the plane of the drawing. A similar screw jack drive unit (not shown) has its jacking screw engaging with a third spherical socket (not shown) integrally moulded with the reflective member 50 to permit adjustment of the reflective member 50 about the spherical formation 46 orthogonal to the first mentioned axis.” EP0864465B1

Fig.4.



EP0864465B1 at Fig. 4.

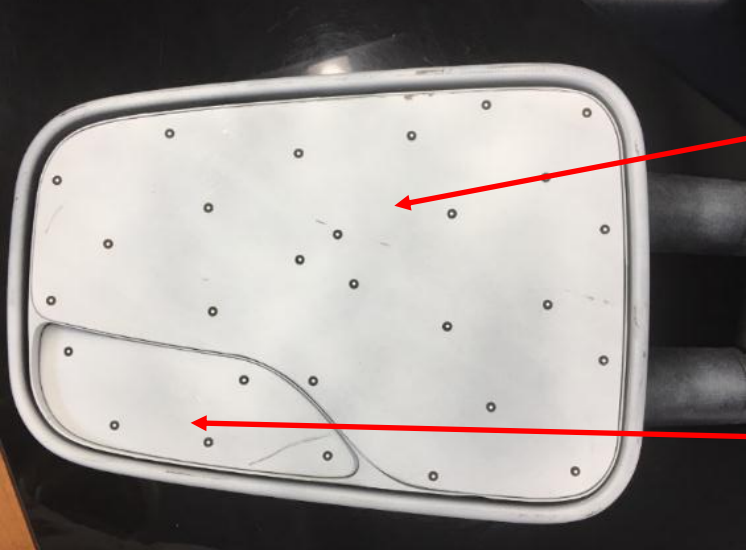
See 49 C.F.R. § 571.111 (October 1, 1999):

“The mirror shall not be obscured by the unwiped portion of the windshield. The mirror shall be adjustable by tilting in both horizontal and vertical directions from the d...
49 C.F.R. § 571.111 (October 1, 1999) at 318.

See U.S. Pat. No. 6,328,451 at Figs. 1-4; 2:52-3:9.

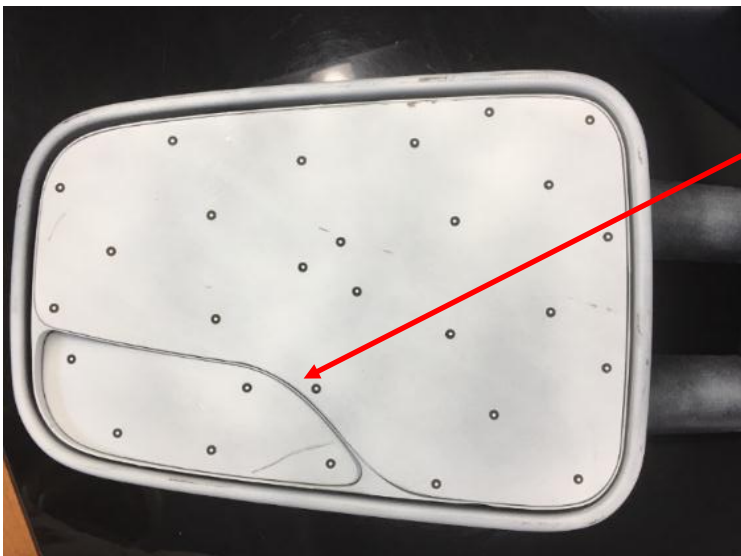
See U.S. Pat. No. 5,721,646 at Figs. 13-21 and accompanying text.

See U.S. Pat. No. 6,984,048 at Figs. 1-4, 9 and accompanying text.

		<p>See also U.S. Pat. No. 5,579,133 at Fig. 12 and accompanying text. See also U.S. Pat. No. 3,826,563 at Fig. 6 and accompanying text; 3:10-14.</p> <p>The Asserted Patents admit that an electrically actuated actuator is known in the art. See, e.g.:</p> <p>“Alternately, when actuator 136 comprises an electrically actuated actuator operable incorporating at least one motor, control 137 can comprise a switch operable preferably, is operable under control of the driver seated in cabin 125) or a controller, or comprise a memory controller, as known in the automotive mirror art, that controls actuator 136 to move the position of plano-multiradius reflective element assembly 135 to an orientation that suits the rearward field of view preference of an individual driver.” (9,694,750 at 6:28-37)</p> <p>The applicants conceded that this limitation was known in the art and/or obvious to a person of ordinary skill in the art at the time of prosecution of the '750 Patent. See 11/25/2016 Office Action pp. 5, 12, 18.</p>
<p>e.</p>	<p>wherein said reflective element comprises a plano-auxiliary reflective element assembly, said plano-auxiliary reflective element assembly comprising a plano reflective element having unit magnification and a separate auxiliary reflective element having a curvature;</p>	<p>The 2001 GMT800 Mirror comprises a plano-auxiliary reflective element assembly comprising a plano reflective element having unit magnification and a separate auxiliary reflective element having a curvature.</p>  <p>Plano reflective element having unit magnification</p> <p>Separate auxiliary reflective element having a curvature</p>

f. said plano reflective element and said auxiliary reflective element of said plano-auxiliary reflective element assembly mounted adjacently at said plano-auxiliary reflective element assembly in a side-by-side relationship and not superimposed with one reflective element on top of the other reflective element;

The **2001 GMT800 Mirror** includes said plano reflective element and said auxiliary reflective element of said plano-auxiliary reflective element assembly mounted adjacently reflective element assembly in a side-by-side relationship and not superimposed element on top of the other reflective element.



Mirrors side by side and not superimposed

To the extent the **2001 GMT800 Mirror** does not disclose said plano reflective auxiliary reflective element of said plano-auxiliary reflective element assembly said plano-auxiliary reflective element assembly in a side-by-side relationship with one reflective element on top of the other reflective element, a POSITA would be obvious in view of the GMT800 Platform Trailer Towing Mirror alone or in combination with more other references.

See discussion of element f in the claim chart for Platzer 956.

See discussion of element f in the claim chart for Platzer 731.

See discussion of element f in the claim chart for Van Nostrand.

Explore Litigation Insights

Docket Alarm provides insights to develop a more informed litigation strategy and the peace of mind of knowing you're on top of things.

Real-Time Litigation Alerts



Keep your litigation team up-to-date with **real-time alerts** and advanced team management tools built for the enterprise, all while greatly reducing PACER spend.

Our comprehensive service means we can handle Federal, State, and Administrative courts across the country.

Advanced Docket Research



With over 230 million records, Docket Alarm's cloud-native docket research platform finds what other services can't. Coverage includes Federal, State, plus PTAB, TTAB, ITC and NLRB decisions, all in one place.

Identify arguments that have been successful in the past with full text, pinpoint searching. Link to case law cited within any court document via Fastcase.

Analytics At Your Fingertips



Learn what happened the last time a particular judge, opposing counsel or company faced cases similar to yours.

Advanced out-of-the-box PTAB and TTAB analytics are always at your fingertips.

API

Docket Alarm offers a powerful API (application programming interface) to developers that want to integrate case filings into their apps.

LAW FIRMS

Build custom dashboards for your attorneys and clients with live data direct from the court.

Automate many repetitive legal tasks like conflict checks, document management, and marketing.

FINANCIAL INSTITUTIONS

Litigation and bankruptcy checks for companies and debtors.

E-DISCOVERY AND LEGAL VENDORS

Sync your system to PACER to automate legal marketing.