

(12) **United States Patent**
DeJaco et al.

(10) **Patent No.:** US 6,745,024 B1
(45) **Date of Patent:** Jun. 1, 2004

(54) **SYSTEM AND METHOD FOR PREPARING AND SENDING AN ELECTRONIC MAIL COMMUNICATION USING A WIRELESS COMMUNICATIONS DEVICE**

WO 00/59196 10/2000
WO WO 00/59196 * 10/2000 H04M/3/533

OTHER PUBLICATIONS

(75) Inventors: **Andrew P. DeJaco**, San Diego, CA (US); **Charles S. Han**, San Diego, CA (US)

Shung-Foo Yu et al. "A multimedia gateway for phone/fax and MIME mail," Computer Communications, NL, Elsevier Science Publishers BV, Amsterdam, vol. 20, No. 8, Aug. 25, 1997, pp. 615-627.

(73) Assignee: **Qualcomm Incorporated**, San Diego, CA (US)

* cited by examiner

(*) Notice: Subject to any disclaimer, the term of this patent is extended or adjusted under 35 U.S.C. 154(b) by 0 days.

Primary Examiner—William Cumming
Assistant Examiner—Alan T. Gantt

(74) *Attorney, Agent, or Firm*—Philip Wadsworth; Kent D. Baker; Donald C. Kordich

(21) Appl. No.: **09/480,835**

(57) **ABSTRACT**

(22) Filed: **Jan. 10, 2000**

(51) **Int. Cl.**⁷ **H04M 3/533**; H04Q 7/22; G06F 13/38

A system and method for preparing and sending e-mail communications using a wireless communications device are disclosed. In one embodiment, input data comprising audio, image, and/or video data is encoded and transmitted to a cellular network. An integrated e-mail processor connected to the cellular network processes the coded data into a composite e-mail message and forwards the message to a server. The server then forwards the composite e-mail message to the indicated recipient(s). In another embodiment, the wireless communications device processes the coded data into a composite e-mail message and forwards it to a server via a cellular network. In either embodiment, the server may be dedicated to the cellular network. The invention thus enables users of handheld wireless communications devices, users of other devices lacking typing keyboards, or users presently unable to use a typing keyboard to prepare and send e-mail messages.

(52) **U.S. Cl.** **455/414**; 709/206; 709/207; 709/217

(58) **Field of Search** 455/414; 709/206, 709/217, 207

(56) **References Cited**

U.S. PATENT DOCUMENTS

| | | | | |
|-----------|----|-----------|----------------|---------|
| 5,414,796 | A | 5/1995 | Jacobs et al. | 395/2.3 |
| 5,600,754 | A | 2/1997 | Gardner et al. | 395/2.3 |
| 5,974,449 | A | * 10/1999 | Chang et al. | 709/206 |
| 6,185,288 | B1 | * 2/2001 | Wong | 370/352 |
| 6,256,666 | B1 | * 7/2001 | Singhal | 709/203 |

FOREIGN PATENT DOCUMENTS

| | | |
|----|----------|---------|
| WO | 94/23394 | 10/1994 |
|----|----------|---------|

32 Claims, 12 Drawing Sheets

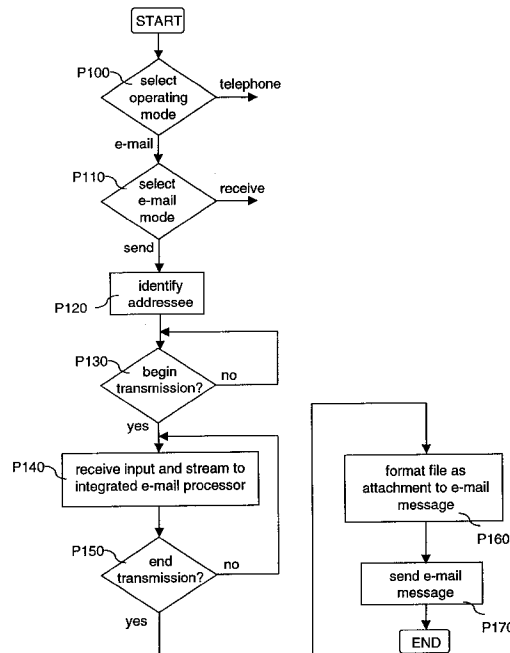


FIG. 1

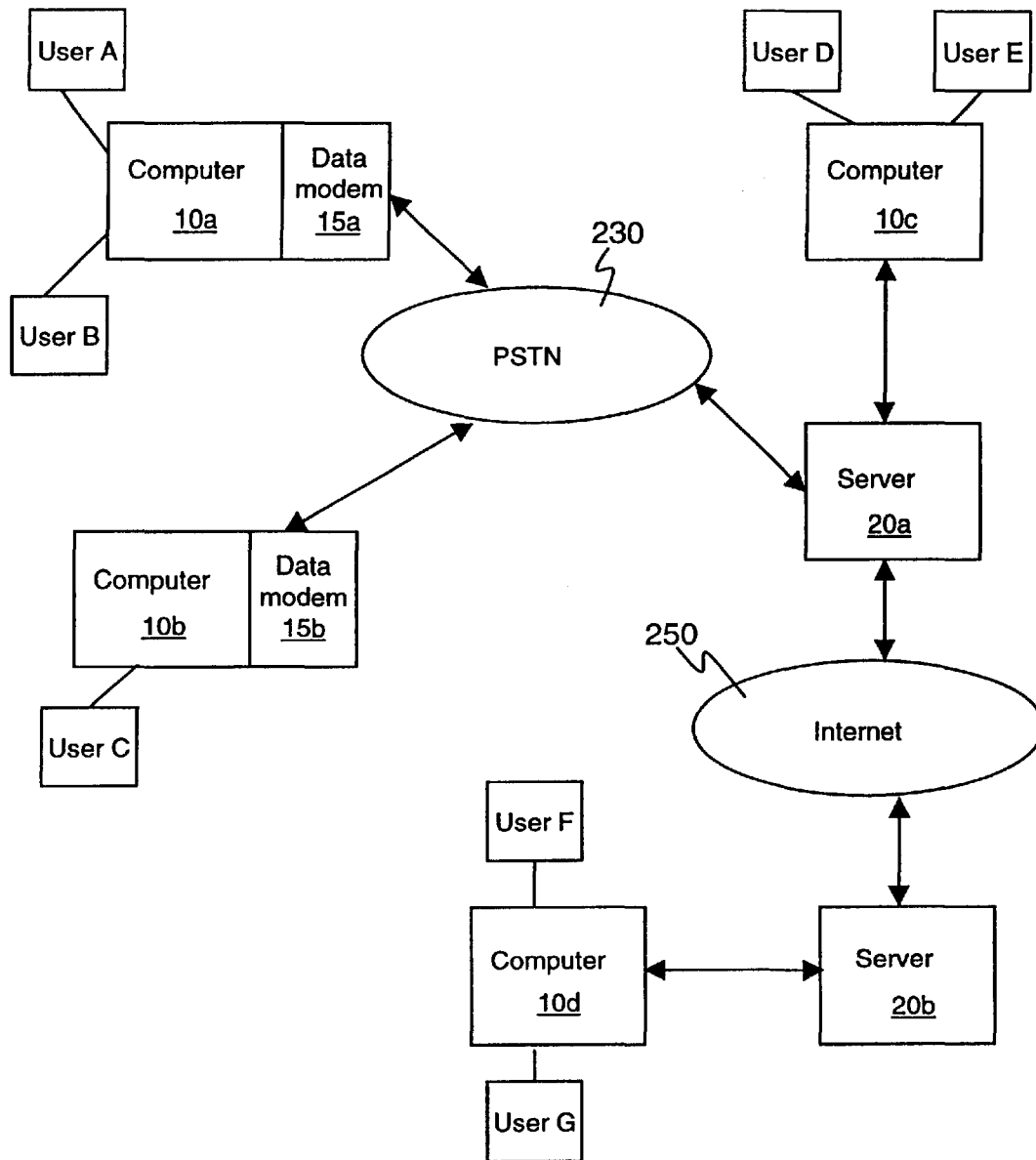


FIG. 2A

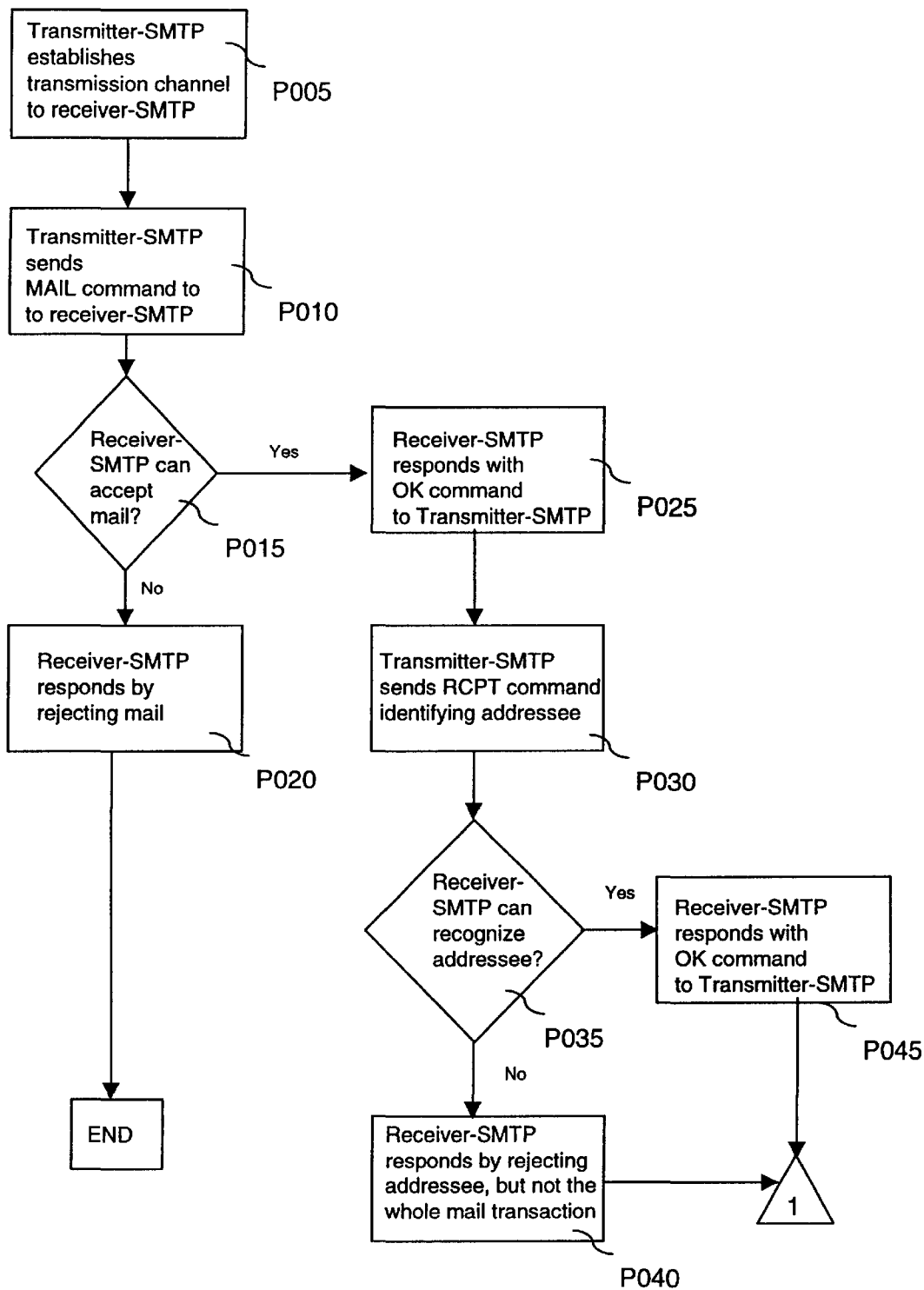


FIG. 2B

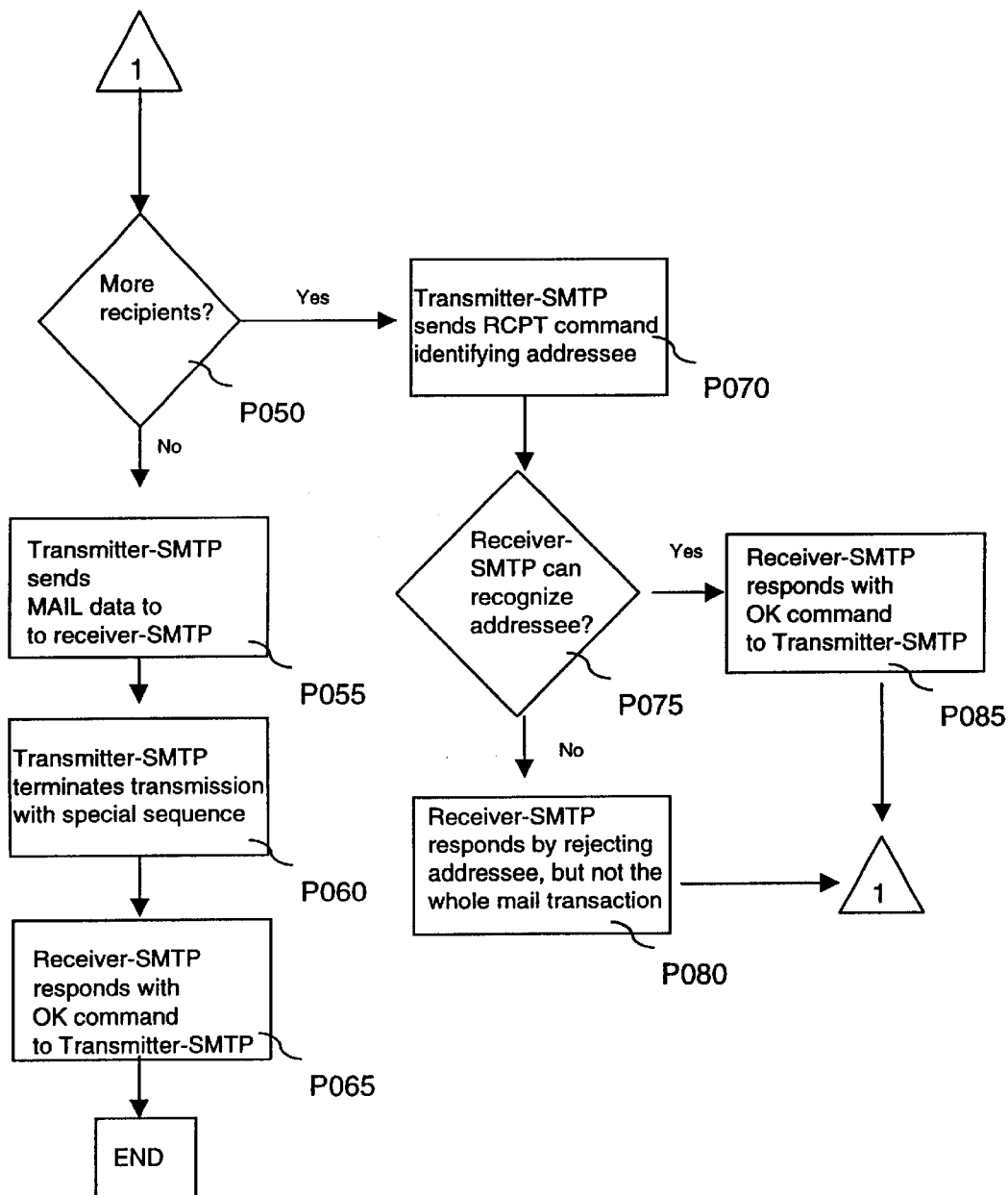
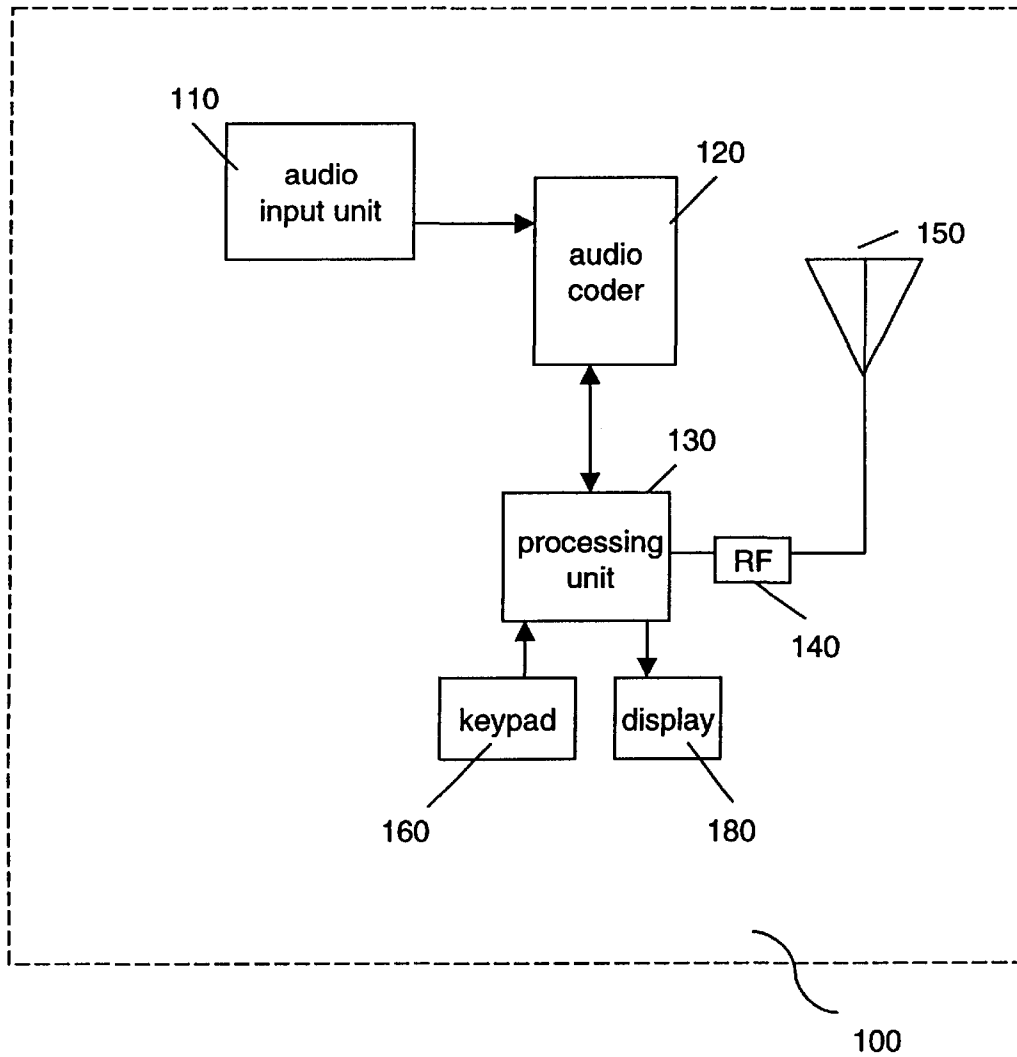


FIG. 3



Explore Litigation Insights

Docket Alarm provides insights to develop a more informed litigation strategy and the peace of mind of knowing you're on top of things.

Real-Time Litigation Alerts



Keep your litigation team up-to-date with **real-time alerts** and advanced team management tools built for the enterprise, all while greatly reducing PACER spend.

Our comprehensive service means we can handle Federal, State, and Administrative courts across the country.

Advanced Docket Research



With over 230 million records, Docket Alarm's cloud-native docket research platform finds what other services can't. Coverage includes Federal, State, plus PTAB, TTAB, ITC and NLRB decisions, all in one place.

Identify arguments that have been successful in the past with full text, pinpoint searching. Link to case law cited within any court document via Fastcase.

Analytics At Your Fingertips



Learn what happened the last time a particular judge, opposing counsel or company faced cases similar to yours.

Advanced out-of-the-box PTAB and TTAB analytics are always at your fingertips.

API

Docket Alarm offers a powerful API (application programming interface) to developers that want to integrate case filings into their apps.

LAW FIRMS

Build custom dashboards for your attorneys and clients with live data direct from the court.

Automate many repetitive legal tasks like conflict checks, document management, and marketing.

FINANCIAL INSTITUTIONS

Litigation and bankruptcy checks for companies and debtors.

E-DISCOVERY AND LEGAL VENDORS

Sync your system to PACER to automate legal marketing.