



US 20050268000A1

(19) **United States**

(12) **Patent Application Publication** (10) **Pub. No.: US 2005/0268000 A1**

**Carlson**

(43) **Pub. Date: Dec. 1, 2005**

(54) **ACCESSORY IDENTIFIER IN AN ELECTRONIC DEVICE**

(52) **U.S. Cl. .... 710/15**

(76) **Inventor: Mark J. Carlson, Round Lake, IL (US)**

(57) **ABSTRACT**

Correspondence Address:  
**MOTOROLA INC**  
**600 NORTH US HIGHWAY 45**  
**ROOM AS437**  
**LIBERTYVILLE, IL 60048-5343 (US)**

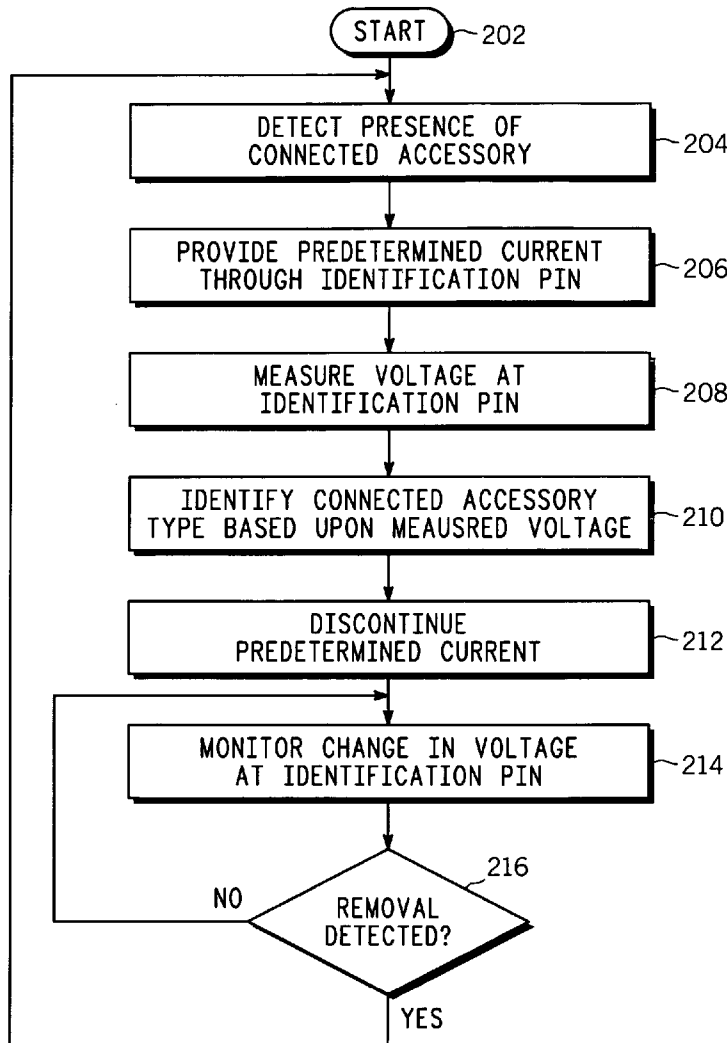
An apparatus (100) and a method (200) for an accessory identifier for identifying a connected accessory type from three or more accessory types (102, 104, 106) are provided. Each of the three or more accessory types (102, 104, 106) has a unique identifier resistor (108, 110, 112), which is accessible through an identification pin (114, 116, 118) and is linearly related to each other in resistance value. Using a voltage source (120), presence of the connected accessory (102) is detected (204) by monitoring a voltage change at the source pin (126). Once the presence is detected, a predetermined current is sent through the source pin (126) and the resulting voltage at the source pin (126) is measured (208), and based upon the measured voltage, the connected accessory type (102) is identified (210).

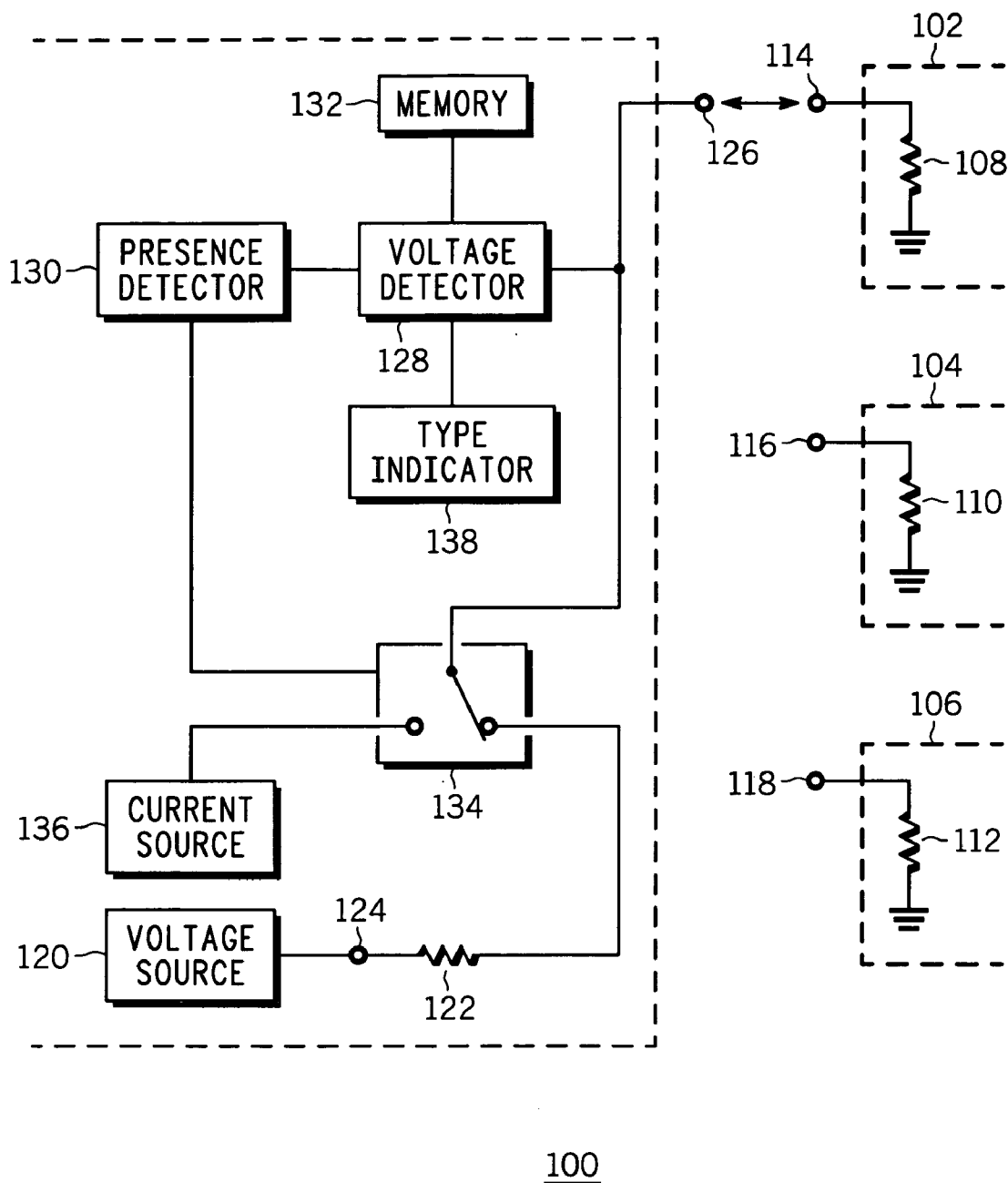
(21) **Appl. No.: 10/857,123**

(22) **Filed: May 28, 2004**

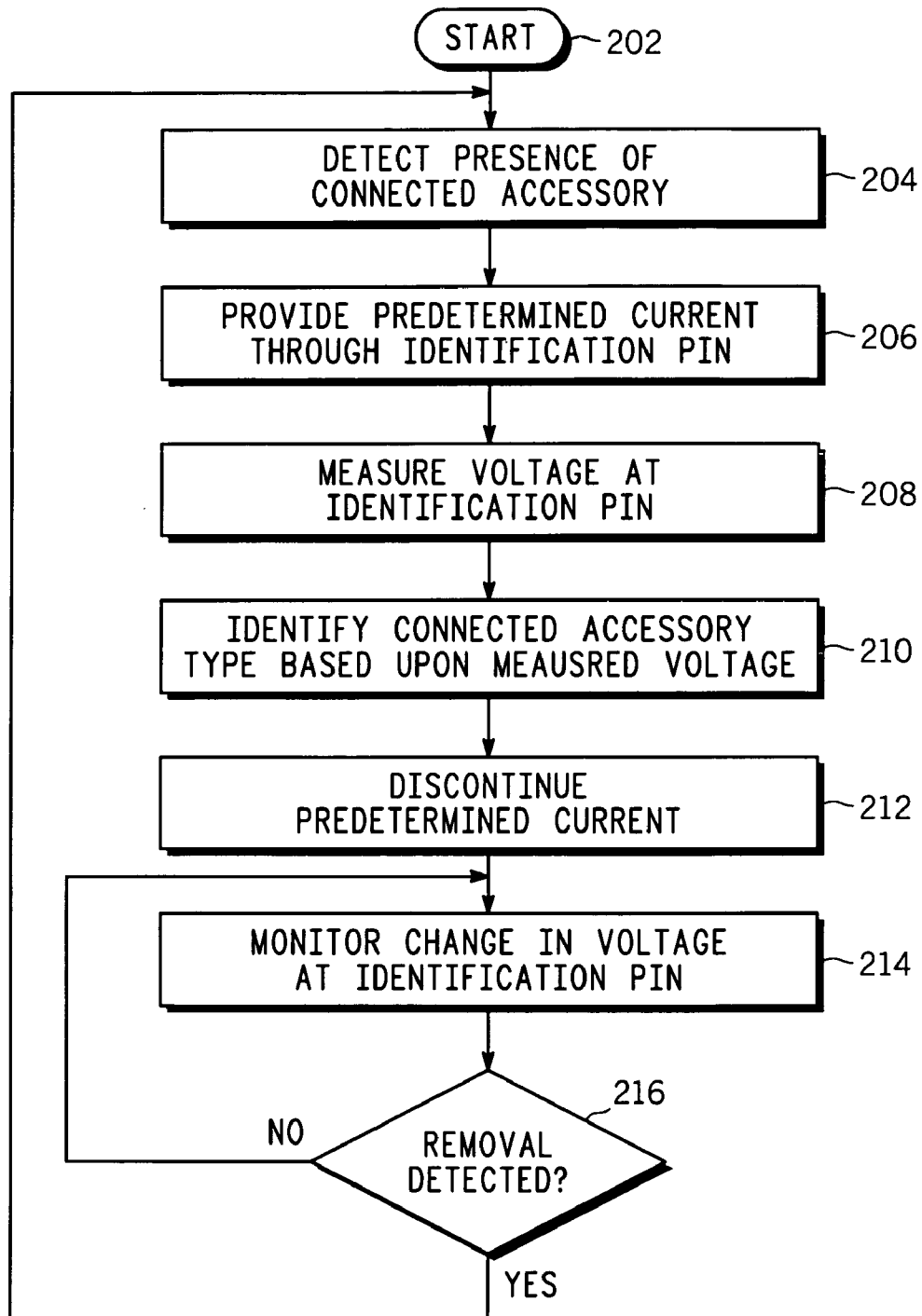
**Publication Classification**

(51) **Int. Cl.<sup>7</sup> ..... G06F 13/00**





**FIG. 1**



200

FIG. 2

## ACCESSORY IDENTIFIER IN AN ELECTRONIC DEVICE

### FIELD OF THE INVENTION

[0001] The present invention generally relates to a data bus connection, and more specifically to detection and identification of an accessory attachment through the data bus connection.

### BACKGROUND OF THE INVENTION

[0002] Portable electronic devices, such as personal digital assistants (“PDAs”), personal computers (“PCs”) and cellular telephones, are generally capable of accepting external accessories such as, but not limited to, a camera, a speaker phone, and a battery charger. An electronic device, which supports the “Mini USB Analog CarKit Interface Specification” (“CEA-936”) published by Consumer Electronics Association, Dec. 1, 2002, is required to detect presence of an accessory at all times through an identification (“ID”) pin of a connector that accepts the accessory. In addition, the ID pin is also used to identify the type of the accessory attached to the electronic device. Presently, the identification of accessory types is implemented by using a regulated voltage and precision resistors to make a precise measurement of the ID pin voltage. The measured ID pin voltage is then used to determine what accessory is currently attached to the electronic device. However, the use of a regulated voltage and precision resistors adds overall cost to the electronic device in terms of number of parts required for the implementation or as an integration cost for the required parts.

[0003] Presently, different resistance values to ground are commonly used in external bus designs for detection and identification of accessories. However, because the CEA-936 interface is designed to be compatible with the existing Universal Serial Bus (“USB”) interface, the range of identification resistors becomes very limited, typically in excess of 100 k $\Omega$ , which necessitates tighter tolerance and higher precision methods for detecting and identifying accessories. Further, because the electronic device is required to detect presence of an accessory at all times through the ID pin, the design using different resistance values to ground for detection and identification of accessories carries the burden of higher current drain due to the fact that the regulated supply must be on at all times.

### BRIEF DESCRIPTION OF THE DRAWINGS

[0004] FIG. 1 is a block diagram of an accessory identifier in accordance with the preferred embodiment; and

[0005] FIG. 2 is a flowchart for an accessory identifier in accordance with the preferred embodiment.

### DETAILED DESCRIPTION OF THE PREFERRED EMBODIMENTS

[0006] The accessory identifier provides an apparatus and a method in an electronic device for detecting and identifying an attached accessory from various attachable accessories. Each of the attachable accessories has a unique resistor, or an identification resistor, connected between an identification pin of the attachable accessory and ground. In a detection mode, the electronic device applies a predetermined

identification pin of an attachable accessory at a receiving end upon attachment. A change in voltage at the receiving end is monitored to detect presence of the attachable accessory. If there was no attachment, the voltage at the receiving end would be the full predetermined voltage of the voltage source because it is an open circuit. However, if there was an accessory attached, then the pullup resistor and the identification resistor of the attached accessory would form a voltage divider, and the voltage at the receiving end would be proportionate to a resistance ratio of the pullup resistor and the identification resistor. In the detection mode, it suffices to notice a change in voltage from the predetermined voltage at the receiving end of the pullup resistor to determine the attachment or removal of an accessory. Once the presence is detected, the electronic device then identifies the attached accessory based upon the identification resistor. Instead of continuing to use the voltage divider, which would require a regulated voltage source and exponentially increasing identification resistor values to differentiate types of accessories, an identification mode based upon a current source is used. By providing a predetermined current to the identification resistor, resistance values used to differentiate accessories can be linearly spaced instead of exponentially spaced as in the voltage divider method, and the regulated voltage source is no longer required.

[0007] FIG. 1 is a block diagram of an accessory identifier 100 in accordance with the preferred embodiment. The accessory identifier 100 is configured to identify a connected accessory type 102 from three or more accessory types (only three accessory types 102, 104, and 106 are shown). Each accessory type 102, 104, and 106 has a unique identification resistor 108, 110, and 112 accessible through an identification pin 114, 116, and 118. The accessory identifier 100 has a voltage source 120, which is connected to a source resistor 122 at its source end 124, and is configured to apply a predetermined voltage at the source end 124. The source resistor 122 is also coupled to a source pin 126, which is designed to connect to the identification pin 114, 116, or 118 when an accessory is attached. A voltage detector 128 is coupled to the source pin 126, and is configured to monitor the voltage at the source pin 126. A presence detector 130 is coupled to the voltage detector 128 to detect presence of the connected accessory 102 based upon a change in the measured voltage at the source pin 126. When there is no accessory connected, the source resistor 122 is an open circuit and the voltage at the source pin 126 is the predetermined voltage supplied by the voltage source 120. However, when there is an accessory attached, such as the connected accessory 102, the source resistor 122 and the identification resistor 108 function as a voltage divider, and the voltage at the source pin 126 is less than the predetermined voltage of the voltage source 120. The voltage detected at the source pin 126 may be stored in a memory 132, which is coupled to the voltage detector 128. The presence detector 130 may compare the stored voltage against the measured voltage at the source pin 126 to detect a change in voltage and to determine when the connected accessory 102 has been removed.

[0008] Once the presence of a connected accessory 102 is detected, a mode switch 134, which is coupled to the presence detector 130, disconnects the source resistor 122 from the source pin 126, and connects a current source 136

resistor **108** of the connected accessory **102**. Because the predetermined current is a known fixed value, the resistance of the identification resistor **108** can be calculated based upon the measured voltage at the source pin **126**. A type indicator **138**, which is coupled to the voltage detector **128**, is configured to identify the identification resistor **108** based upon the measured voltage. Further, based upon the identity, or the resistance value, of the identification resistor **108**, the type indicator **138** is configured to determine the type of the connected accessory **102**. By using the current source **136** to generate voltage across an identification resistor **108**, **110**, or **112**, resistance values for the identification resistors **108**, **110**, and **112** can be linearly spaced to provide sufficiently different voltages at the source pin **126** to determine the type of the connected accessory. In a voltage divider method, using the voltage source **120** and the voltage detector **128** to determine the type of the connected accessory based on the divided voltage at the source pin **126**, the resistance values used for the identification resistors need to be spaced exponentially to produce sufficient voltage difference among the accessory types. For example, setting the voltage source **120** to be 2 V, the source resistor **122** to be 100 k $\Omega$ , and the first identification resistor for the first accessory type to be 100 k $\Omega$  producing 1 V at the source pin **126**, then the subsequent resistors for different accessory types and the resulting voltages at the source pin **126** would be as follows: 200 k $\Omega$  producing 1.33 V; 400 k $\Omega$  producing 1.6 V; 800 k $\Omega$  producing 1.78 V; 1600 k $\Omega$  producing 1.88 V; 3200 k $\Omega$  producing 1.94 V. As shown, the voltage difference between accessory types rapidly diminishes as the number of types increase. To measure the diminishing differences, the voltage divider method would require a high precision voltage source and high precision voltage detector as well as high precision resistors for the identification resistors. However, in a current source method using the current source **136**, the resistance values used for the identification resistors can be spaced linearly to produce sufficient voltage difference among the accessory types. For example, setting the current source **136** to provide 5  $\mu$ A and the first identification resistor for the first accessory type to be 100 k $\Omega$  producing 0.5 V at the source pin **126**, then to produce a voltage difference of 0.1 V in the subsequent accessory types, the resistors for the subsequent accessory types and the resulting voltages at the source pin **126** would be as follows: 120 k $\Omega$  producing 0.6 V; 140 k $\Omega$  producing 0.7 V; 160 k $\Omega$  producing 0.8 V; 180 k $\Omega$  producing 0.9 V; 200 k $\Omega$  producing 1.0 V; 220 k $\Omega$  producing 1.1 V; 240 k $\Omega$  producing 1.2 V; 260 k $\Omega$  producing 1.3 V; 280 k $\Omega$  producing 1.4 V; 300 k $\Omega$  producing 1.5 V; and may extend up to the maximum detectable voltage. By using the current source **136**, the voltage difference among the accessory types does not diminish as the number of accessories increase. Further, the current source method does not require high precision voltage source, high precision voltage detector, or high precision resistors for the identification resistors. Alternatively, the current source **136** may vary the current until a predetermined voltage is measured at the source pin **126**, and then the current required to produce the predetermined voltage may be correlated to determine the type of the connected accessory **102**.

[0009] To reduce power consumption, once the connected accessory **102** is identified, the mode switch **134** disables the

accessory **102** can be detected by detecting a change in voltage at the source pin **126**.

[0010] FIG. 2 is a flowchart **200** of an accessory identifier in accordance with the preferred embodiment. The process begins in block **202**, and presence of a connected accessory type **102** is detected in block **204**. The presence of the connected accessory type **102** may be accomplished by monitoring voltage change at the identification pin **114**, which is connected to the source pin **126**. Once the presence is detected, a predetermined current from the current source **136** is provided through the identification pin **114** in block **206**. The predetermined current generates voltage across the identification resistor **108**, and the generated voltage is measured at the identification pin **114** in block **208**, and based upon the measured voltage, the connected accessory type **102** is identified in block **210**. Alternatively, the current source **136** may vary the current until a predetermined voltage is measured at the source pin **126**, and then the current required to produce the predetermined voltage may be correlated to determine the type of the connected accessory **102**. Once the connected accessory type **102** is identified, the predetermined current is discontinued in block **212**, which reduces power consumption, and the monitoring of a change in voltage at the identification pin **114** is resumed in block **214**. If the removal is detected in block **216**, then the process loops back to block **204**, and begins again to detect for presence of a connected accessory. Otherwise, the monitoring of a change in voltage at the identification pin **114** is continued in block **214**.

[0011] While the preferred embodiments of the invention have been illustrated and described, it is to be understood that the invention is not so limited. Numerous modifications, changes, variations, substitutions and equivalents will occur to those skilled in the art without departing from the spirit and scope of the present invention as defined by the appended claims.

What is claimed is:

1. An accessory identifier configured to identify a connected accessory type from three or more accessory types, each of the three or more accessory types having a unique identifier resistor accessible through an identification pin, the accessory identifier comprising:

- a source pin configured to connect to the identification pin of any one of the three or more accessory types;
- a current source switchably coupled to the source pin, the current source configured to provide a predetermined current to the unique identifier resistor of the connected accessory type of the three or more accessory types;
- a voltage detector coupled to the source pin, the voltage detector configured to measure a voltage at the source pin; and
- a type indicator coupled to the voltage detector, the type indicator configured to identify the connected accessory type of the three or more accessory types based upon the measured voltage,

wherein the unique identification resistor of each of the three or more accessory types is linearly related in

# Explore Litigation Insights

Docket Alarm provides insights to develop a more informed litigation strategy and the peace of mind of knowing you're on top of things.

## Real-Time Litigation Alerts



Keep your litigation team up-to-date with **real-time alerts** and advanced team management tools built for the enterprise, all while greatly reducing PACER spend.

Our comprehensive service means we can handle Federal, State, and Administrative courts across the country.

## Advanced Docket Research



With over 230 million records, Docket Alarm's cloud-native docket research platform finds what other services can't. Coverage includes Federal, State, plus PTAB, TTAB, ITC and NLRB decisions, all in one place.

Identify arguments that have been successful in the past with full text, pinpoint searching. Link to case law cited within any court document via Fastcase.

## Analytics At Your Fingertips



Learn what happened the last time a particular judge, opposing counsel or company faced cases similar to yours.

Advanced out-of-the-box PTAB and TTAB analytics are always at your fingertips.

## API

Docket Alarm offers a powerful API (application programming interface) to developers that want to integrate case filings into their apps.

## LAW FIRMS

Build custom dashboards for your attorneys and clients with live data direct from the court.

Automate many repetitive legal tasks like conflict checks, document management, and marketing.

## FINANCIAL INSTITUTIONS

Litigation and bankruptcy checks for companies and debtors.

## E-DISCOVERY AND LEGAL VENDORS

Sync your system to PACER to automate legal marketing.