



[54] SEGMENTED MEMORY TRANSFER AND MESSAGE PRIORITY ON SYNCHRONOUS/ASYNCHRONOUS DATA BUS

[75] Inventors: Gary A. Welsch, Palatine; Donald A. Dorsey, Arlington Heights, both of Ill.

[73] Assignee: Motorola, Inc., Schaumburg, Ill.

[21] Appl. No.: 559,873

[22] Filed: Jul. 30, 1990

[51] Int. Cl.<sup>5</sup> ..... G06F 13/00

[52] U.S. Cl. .... 395/200; 395/325; 395/425; 455/11.1; 455/33.1

[58] Field of Search ..... 364/DIG. 1, DIG. 2; 395/200, 425, 550, 275, 325; 455/11.1, 33.1, 54.1

[56] References Cited

U.S. PATENT DOCUMENTS

- 4,369,516 1/1983 Byrns .
- 4,380,060 4/1983 Wilhelm .
- 4,593,155 6/1986 Hawkins .
- 4,615,017 9/1986 Finlay et al. .... 395/325
- 4,631,666 12/1986 Harris et al. .... 395/325
- 4,667,191 5/1987 Comroe et al. .
- 4,680,787 7/1987 Marry .
- 4,725,836 2/1988 Guidos .
- 4,742,560 5/1988 Arai .
- 4,875,230 10/1989 Blair .

OTHER PUBLICATIONS

"Interface Between Data Terminal Equipment and Data Communication Equipment Employing Serial Binary Data Interchange", ETA Standard RS-232-C, Revision of RS-232-B, Aug. 1969 (Reaffirmed Jun., 1981).

R. E. Fisher, "A Subscriber Set for the Equipment Test" The Bell System Technical Journal, Jan., 1979 pp. 123-143.

HMOS Single Chip Microcomputer Data Book, No. ADI1207R1, 1987 pp. 5-1 thru 5-5.

Motorola Semiconductor Technical Data, "8-Bit HMOS Microcomputer" MC68HC811D4, No. BR296, 1986.

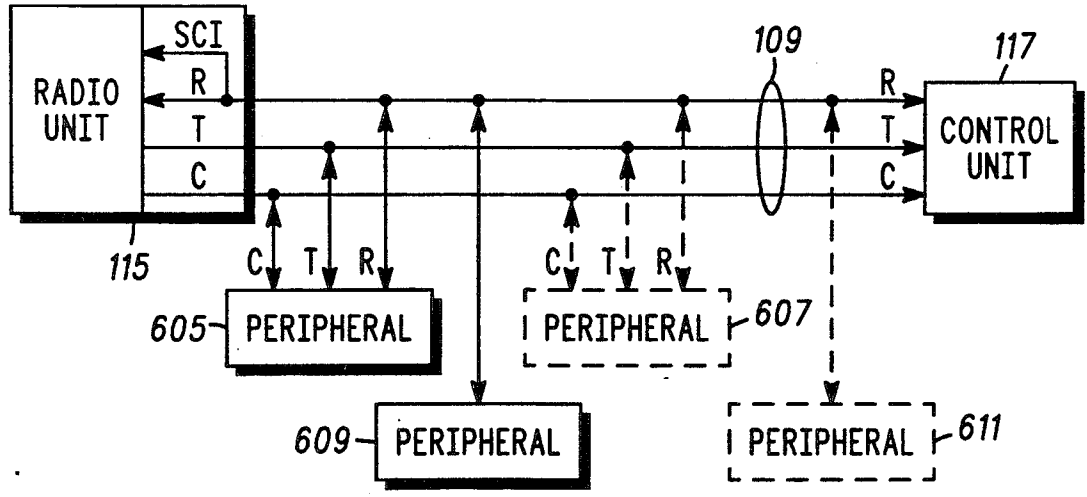
Primary Examiner—Robert L. Richardson

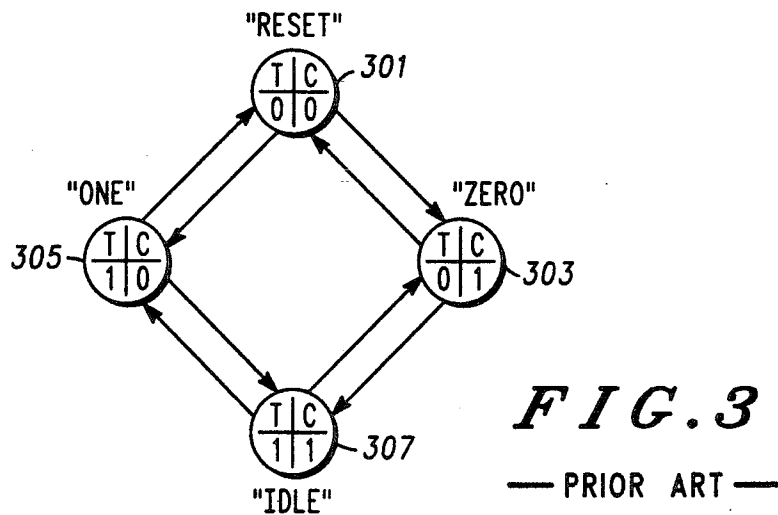
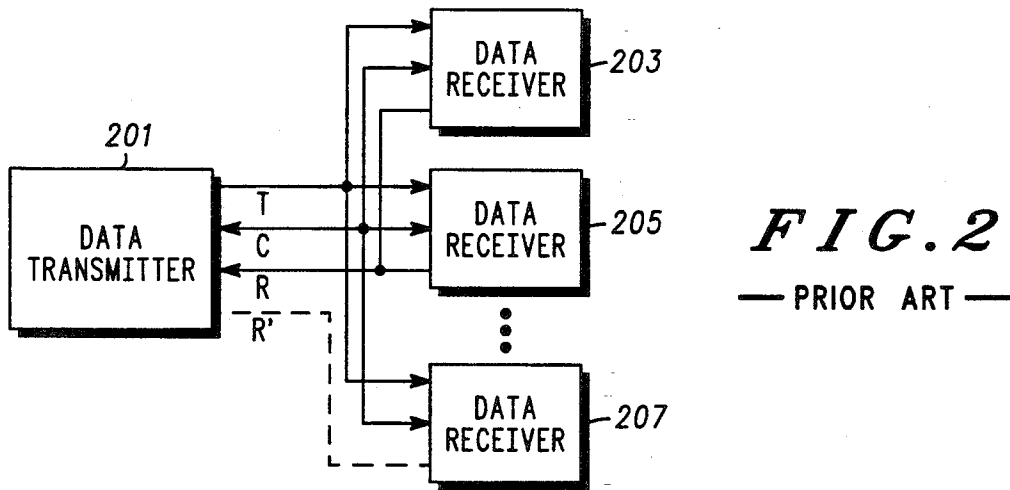
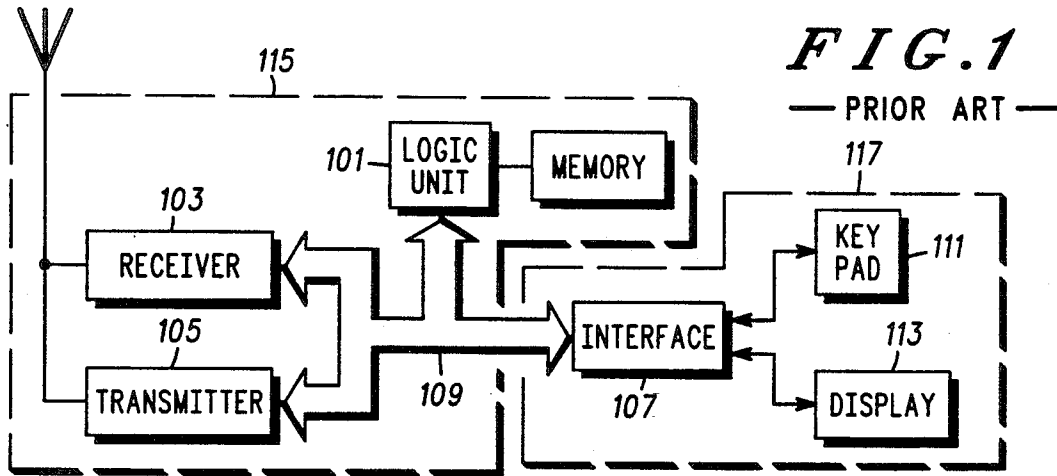
Attorney, Agent, or Firm—Raymond A. Jenski

[57] ABSTRACT

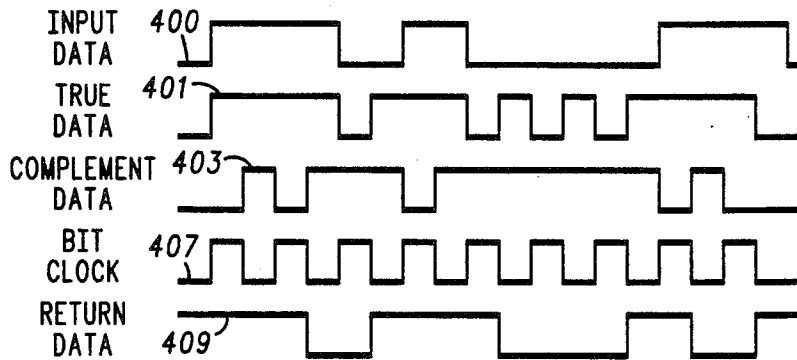
Apparatus and method for transferring segmented memory between memory units determines a need for memory transfer and searches a memory unit segment by segment until a valid data record is found. This valid data record is conveyed to another memory unit via the asynchronous mode. If a valid data records is not found within a predetermined amount of time, a message identifying the memory segment last searched is conveyed. If no remaining valid data records are found, a message with no information is conveyed. Priority is given to asynchronous messages.

22 Claims, 12 Drawing Sheets

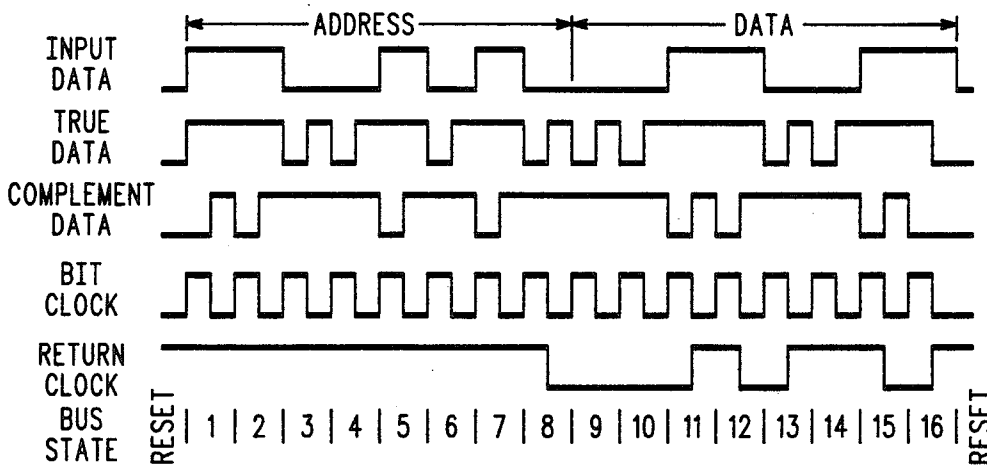




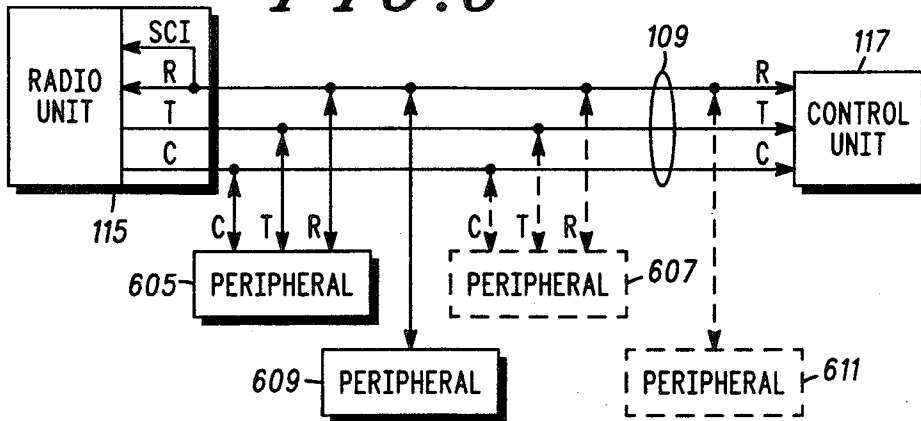
**FIG. 4**  
— PRIOR ART —



**FIG. 5**  
— PRIOR ART —



**FIG. 6**



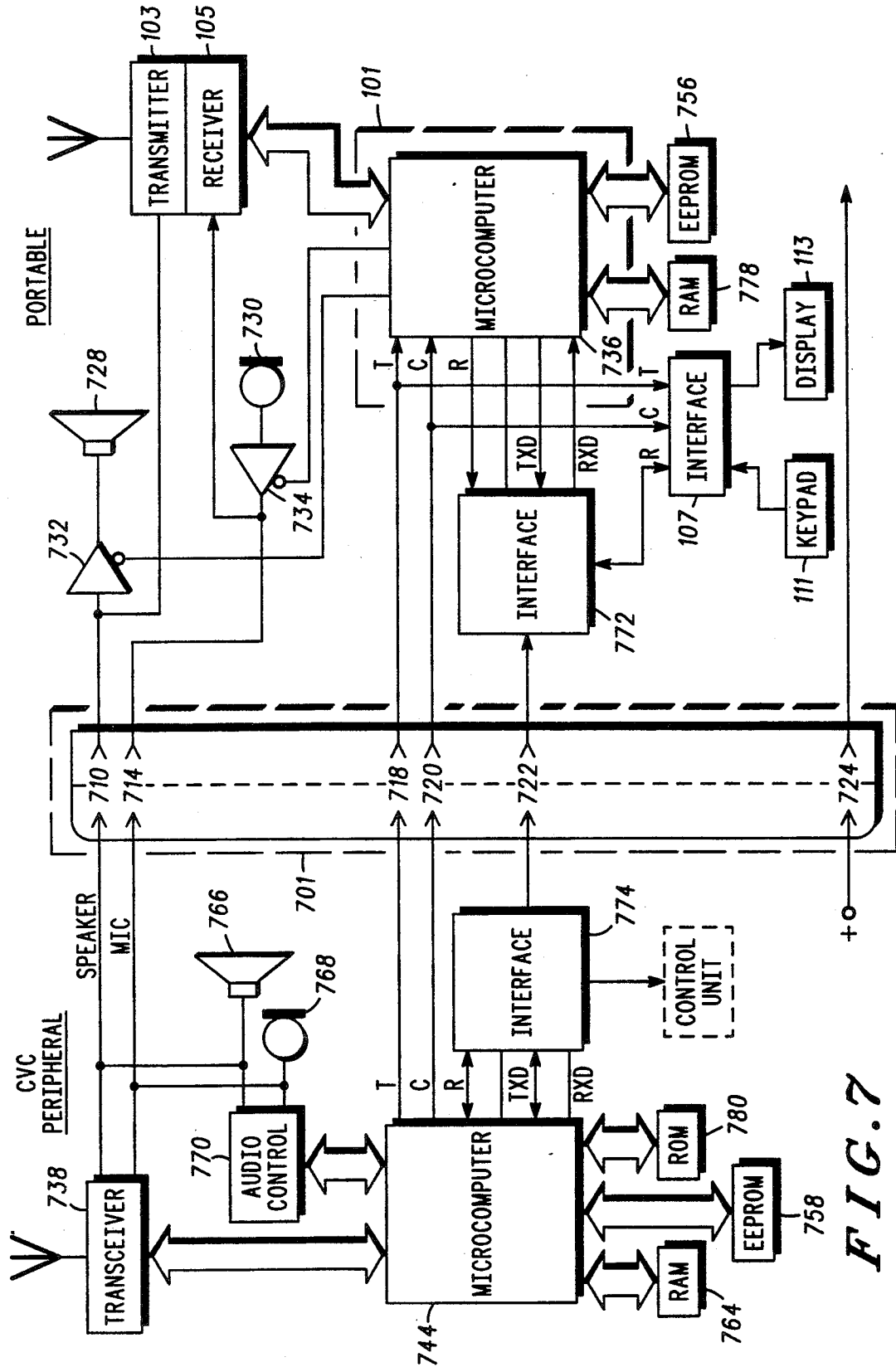


FIG. 7

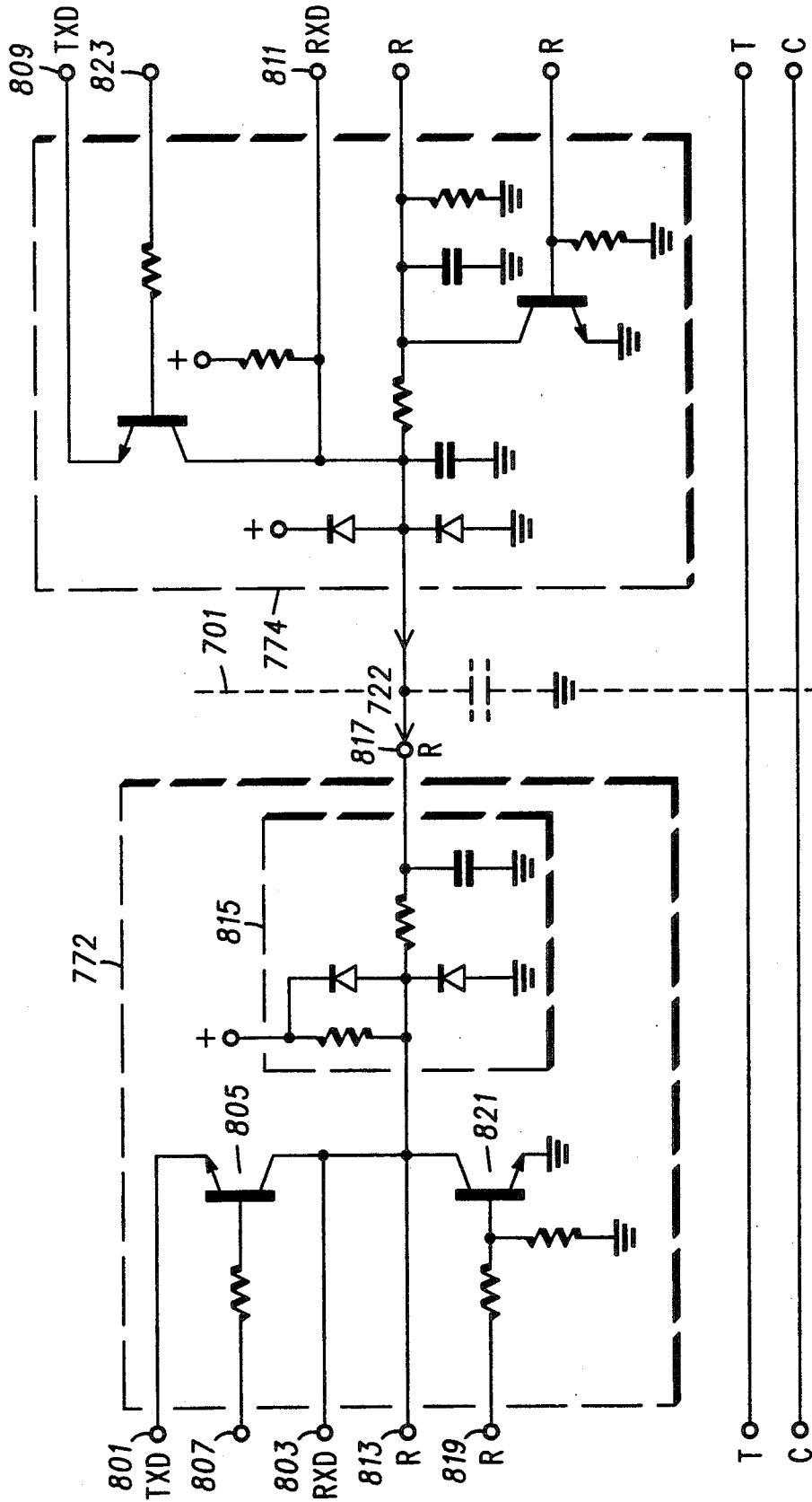


FIG. 8

# Explore Litigation Insights

Docket Alarm provides insights to develop a more informed litigation strategy and the peace of mind of knowing you're on top of things.

## Real-Time Litigation Alerts



Keep your litigation team up-to-date with **real-time alerts** and advanced team management tools built for the enterprise, all while greatly reducing PACER spend.

Our comprehensive service means we can handle Federal, State, and Administrative courts across the country.

## Advanced Docket Research



With over 230 million records, Docket Alarm's cloud-native docket research platform finds what other services can't. Coverage includes Federal, State, plus PTAB, TTAB, ITC and NLRB decisions, all in one place.

Identify arguments that have been successful in the past with full text, pinpoint searching. Link to case law cited within any court document via Fastcase.

## Analytics At Your Fingertips



Learn what happened the last time a particular judge, opposing counsel or company faced cases similar to yours.

Advanced out-of-the-box PTAB and TTAB analytics are always at your fingertips.

## API

Docket Alarm offers a powerful API (application programming interface) to developers that want to integrate case filings into their apps.

## LAW FIRMS

Build custom dashboards for your attorneys and clients with live data direct from the court.

Automate many repetitive legal tasks like conflict checks, document management, and marketing.

## FINANCIAL INSTITUTIONS

Litigation and bankruptcy checks for companies and debtors.

## E-DISCOVERY AND LEGAL VENDORS

Sync your system to PACER to automate legal marketing.