

United States Patent [19]

Cotie et al.

[11] Patent Number: **4,667,193**

[45] Date of Patent: **May 19, 1987**

- [54] ADDRESSING SYSTEM FOR SIMULTANEOUSLY POLLING PLURAL REMOTE STATIONS
- [75] Inventors: Gary R. Cotie, West Chicago; Charles H. Culp, Mundelein, both of Ill.; Daniel J. Dargis, Knoxville, Tenn.; John M. Mendala, Arlington Heights; Stephen C. Spielman, Glenview, both of Ill.
- [73] Assignee: Honeywell, Inc., Minneapolis, Minn.
- [21] Appl. No.: 561,004
- [22] Filed: Dec. 13, 1983
- [51] Int. Cl.⁴ H04Q 9/00; G05B 23/02
- [52] U.S. Cl. 340/825.08; 340/825.54
- [58] Field of Search 340/825.54, 825.08, 340/310 R, 310 A, 870.02, 825.6, 825.16; 370/96; 455/14, 3

3,702,008	10/1972	Groth	370/96
3,755,781	8/1973	Haas et al.	340/825.08
3,755,782	8/1973	Haas et al.	340/825.08
3,836,888	9/1974	Boenke et al.	455/3
3,890,460	6/1975	Haas et al.	178/2 C
4,071,908	1/1978	Brophy et al.	364/900
4,302,750	11/1981	Wadhvani et al.	340/870.02
4,586,040	4/1986	Akiba et al.	340/825.08

Primary Examiner—Donald J. Yusko
Attorney, Agent, or Firm—Trevor B. Joike; John P. Sumner

- [56] **References Cited**
U.S. PATENT DOCUMENTS
- 3,522,588 8/1970 Clarke, Jr. et al. 340/825.06
- 3,644,894 2/1972 McCrea 340/825.16

[57] **ABSTRACT**
In a contention polling arrangement wherein polling messages are transmitted by a central controller for simultaneously polling a group of remote stations, the polling message contains an address which defines the entire range of remote stations to be polled and the remote stations will respond if their addresses fall between the address contained in the polling message and an address resulting from converting any trailing 0's of the address in the polling message to 1's.

21 Claims, 11 Drawing Figures

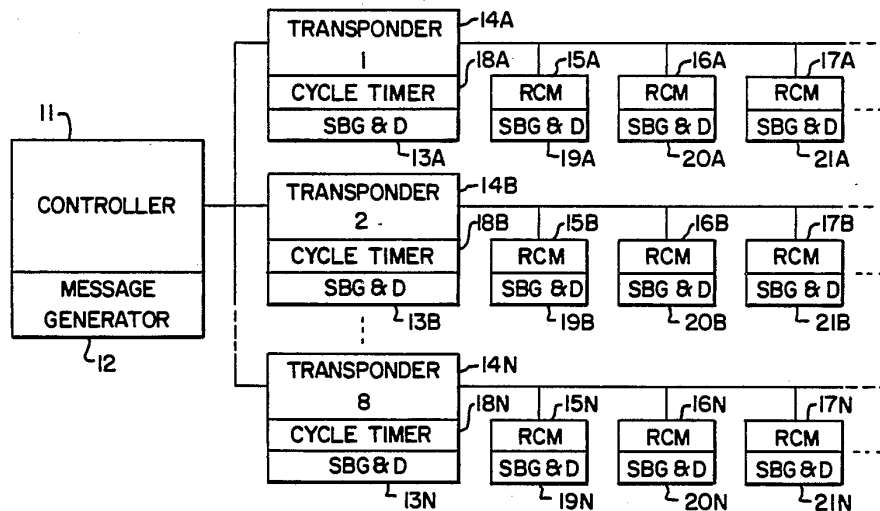


FIG. 1

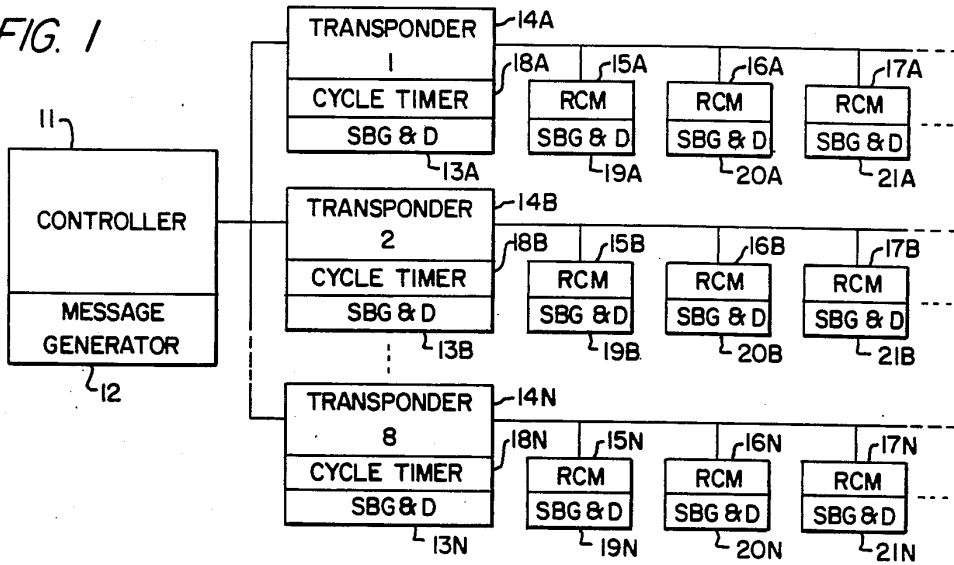


FIG. 2

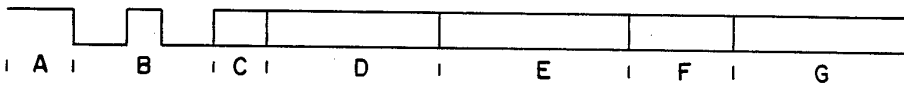


FIG. 3

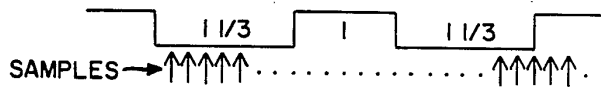
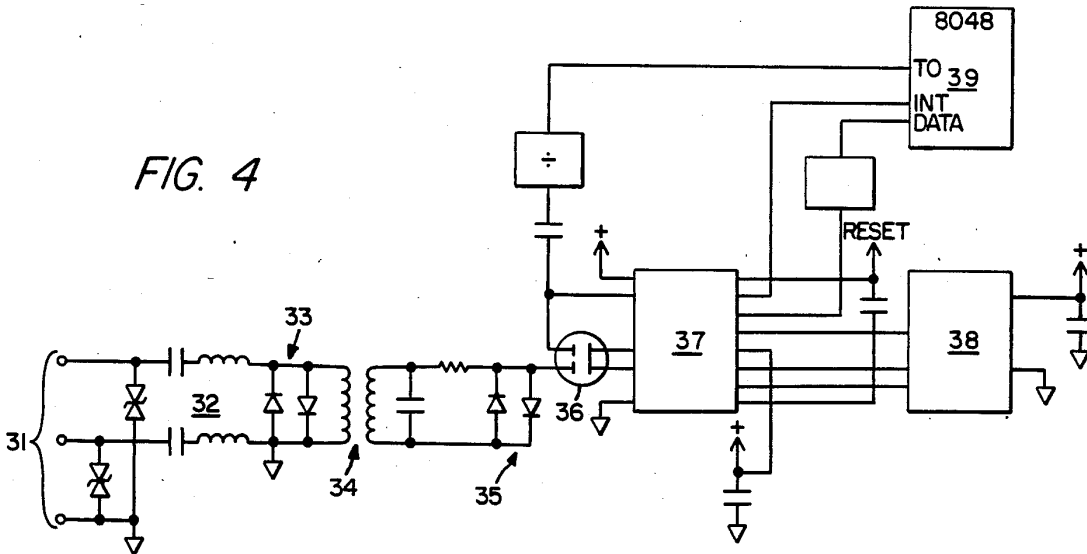


FIG. 4



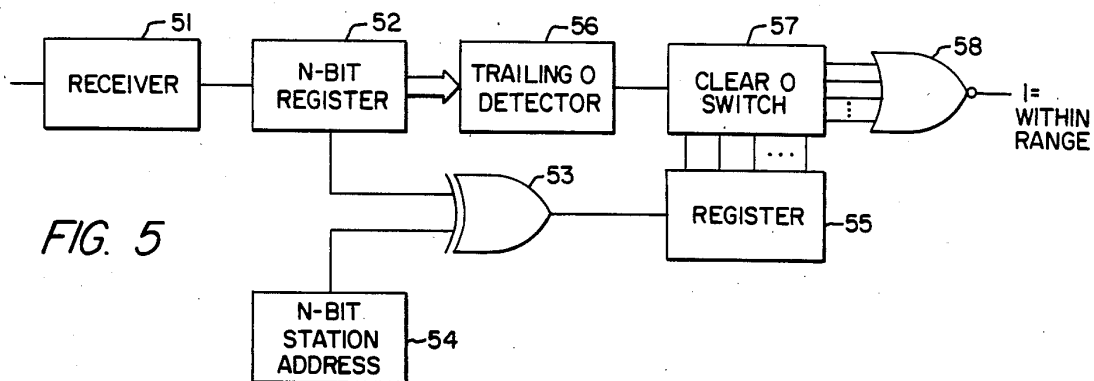


FIG. 5

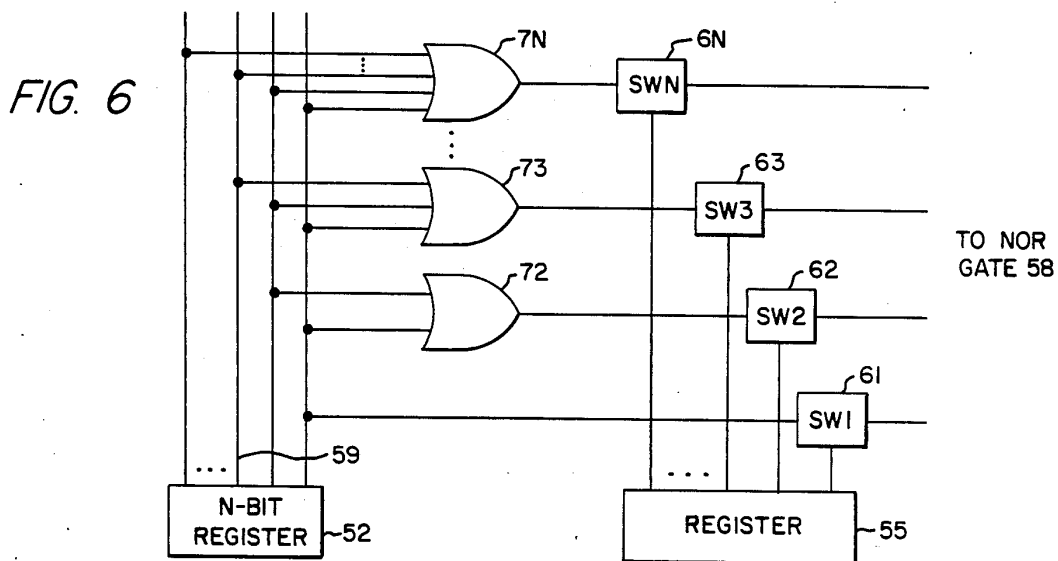


FIG. 6

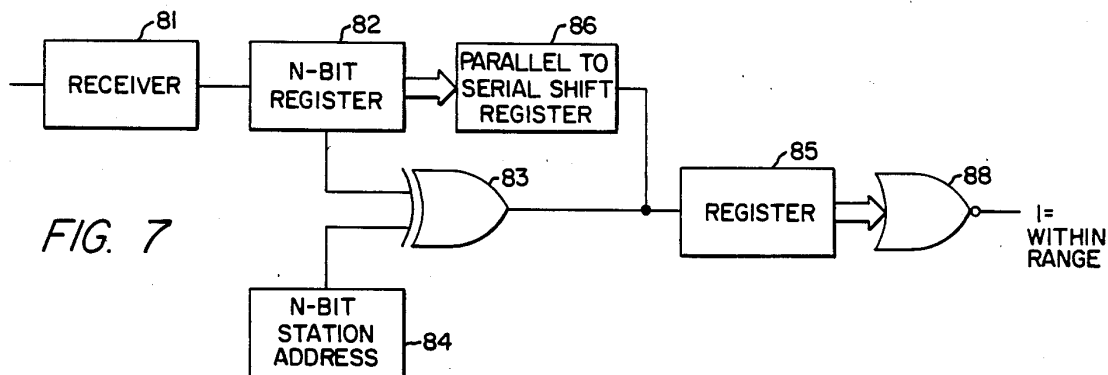


FIG. 7

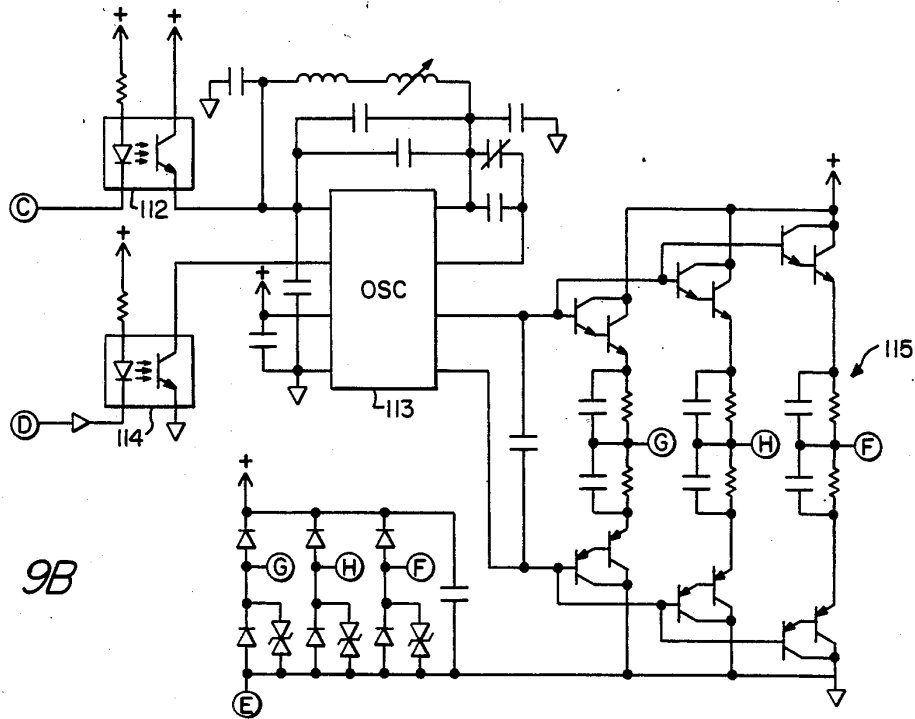


FIG. 9B

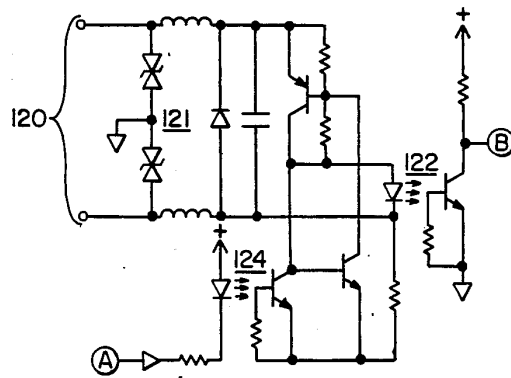
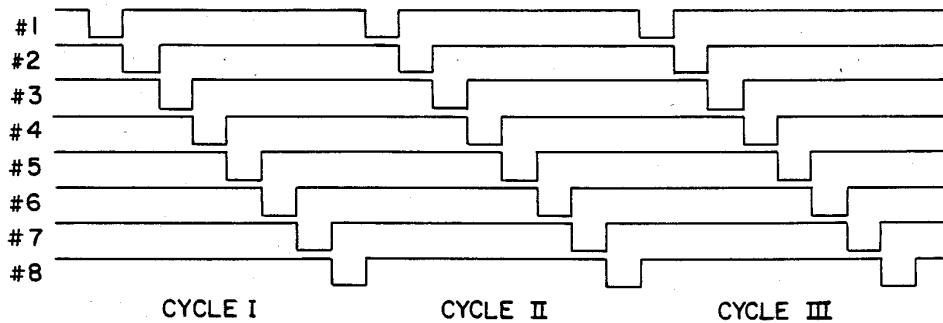


FIG. 9C

FIG. 8

TRANSPONDERS



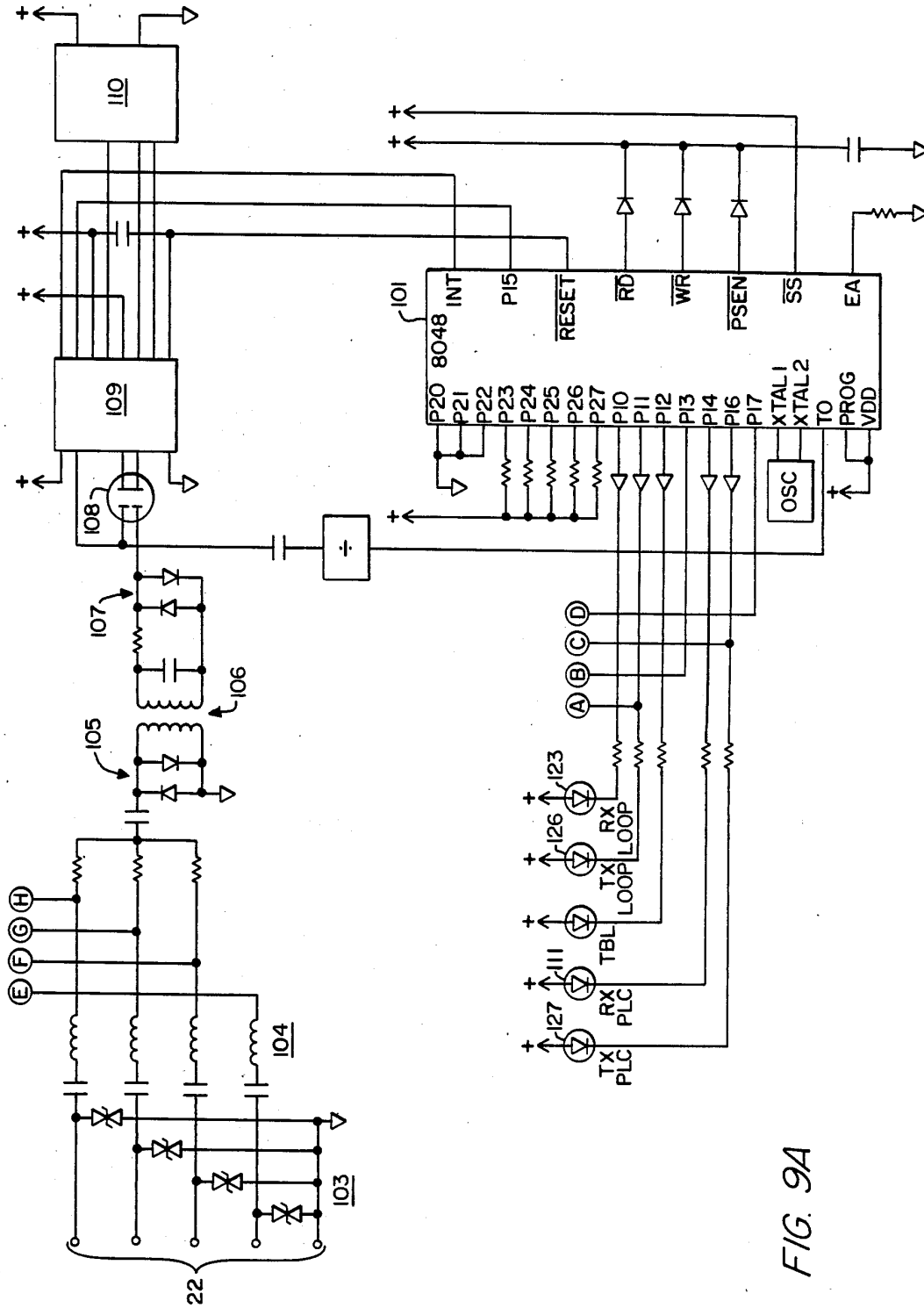


FIG. 9A

Explore Litigation Insights

Docket Alarm provides insights to develop a more informed litigation strategy and the peace of mind of knowing you're on top of things.

Real-Time Litigation Alerts



Keep your litigation team up-to-date with **real-time alerts** and advanced team management tools built for the enterprise, all while greatly reducing PACER spend.

Our comprehensive service means we can handle Federal, State, and Administrative courts across the country.

Advanced Docket Research



With over 230 million records, Docket Alarm's cloud-native docket research platform finds what other services can't. Coverage includes Federal, State, plus PTAB, TTAB, ITC and NLRB decisions, all in one place.

Identify arguments that have been successful in the past with full text, pinpoint searching. Link to case law cited within any court document via Fastcase.

Analytics At Your Fingertips



Learn what happened the last time a particular judge, opposing counsel or company faced cases similar to yours.

Advanced out-of-the-box PTAB and TTAB analytics are always at your fingertips.

API

Docket Alarm offers a powerful API (application programming interface) to developers that want to integrate case filings into their apps.

LAW FIRMS

Build custom dashboards for your attorneys and clients with live data direct from the court.

Automate many repetitive legal tasks like conflict checks, document management, and marketing.

FINANCIAL INSTITUTIONS

Litigation and bankruptcy checks for companies and debtors.

E-DISCOVERY AND LEGAL VENDORS

Sync your system to PACER to automate legal marketing.