



US005213555A

# United States Patent [19]

[11] Patent Number: **5,213,555**

Hood et al.

[45] Date of Patent: **May 25, 1993**

## [54] EXERCISE EQUIPMENT INFORMATION, COMMUNICATION AND DISPLAY SYSTEM

## FOREIGN PATENT DOCUMENTS

[76] Inventors: **Robert L. Hood**, 32380 Pine St., Grayslake, Ill. 60030; **William H. Englehardt**, 465 W. Dominican, Woodale, Ill. 60191; **Russell W. Krch**, 8231 W. 79th St., Apt. 2E, Justice, Ill. 60458

8705727 9/1987 European Pat. Off. .  
0255142 3/1988 European Pat. Off. .  
3706250 7/1988 Fed. Rep. of Germany .  
3629808 10/1988 Fed. Rep. of Germany .  
8500141 1/1987 PCT Int'l Appl. .  
8806776 9/1988 PCT Int'l Appl. .... 272/129

[21] Appl. No.: **485,700**

*Primary Examiner*—Richard J. Apley  
*Assistant Examiner*—Glenn Richman  
*Attorney, Agent, or Firm*—Jenner & Block

[22] Filed: **Feb. 27, 1990**

[51] Int. Cl.<sup>5</sup> ..... **A63B 21/00**

## [57] ABSTRACT

[52] U.S. Cl. .... **482/57; 482/902**

[58] Field of Search ..... 272/69, 72, 73, DIG. 5; 273/16, 16 C, 16 E, 1 E, 138 A, 434-436; 364/264, 410, 411; 434/350, 84; 128/670, 689; 482/57, 52, 54, 72, 902

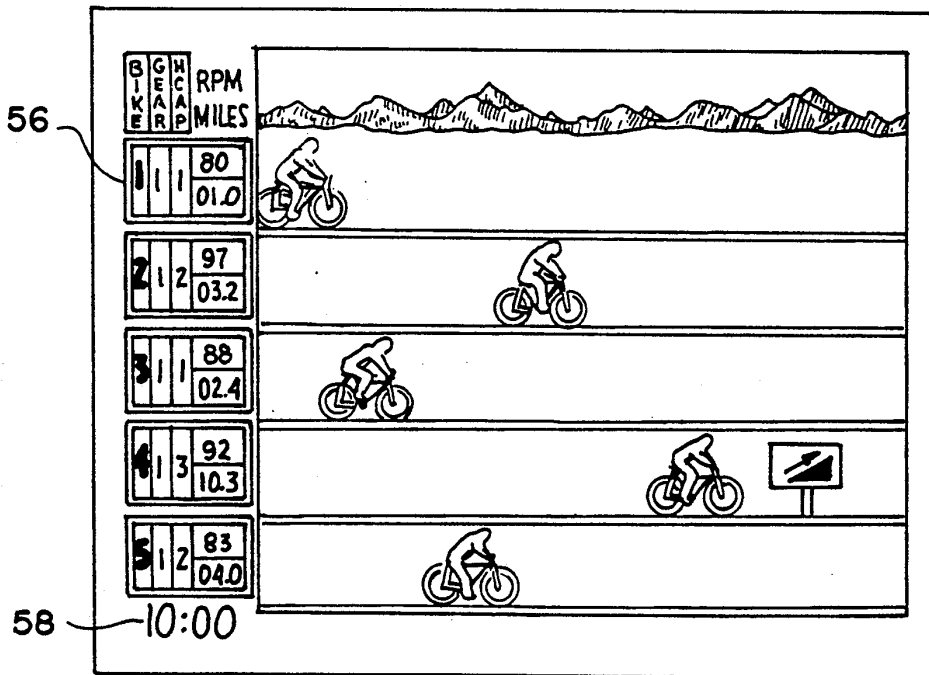
An information, communication and control system for use in a health club which accumulates data from various types of exercise equipment and permits a number of exercise machines to be raced against one another. The exercise machines are equipped with keyboards from which users can enter data including their handicap (ability level) and the desired length of race. A central controller includes memory for storing data accumulated from the exercise machines and programs. The controller, responsive to the programs and input data, conducts a race between two or more exercise machines and displays the progress of the race on a video monitor. The controller can also be used to set up exercise programs for users on the various machines based on user performance data accumulated from the machines over time.

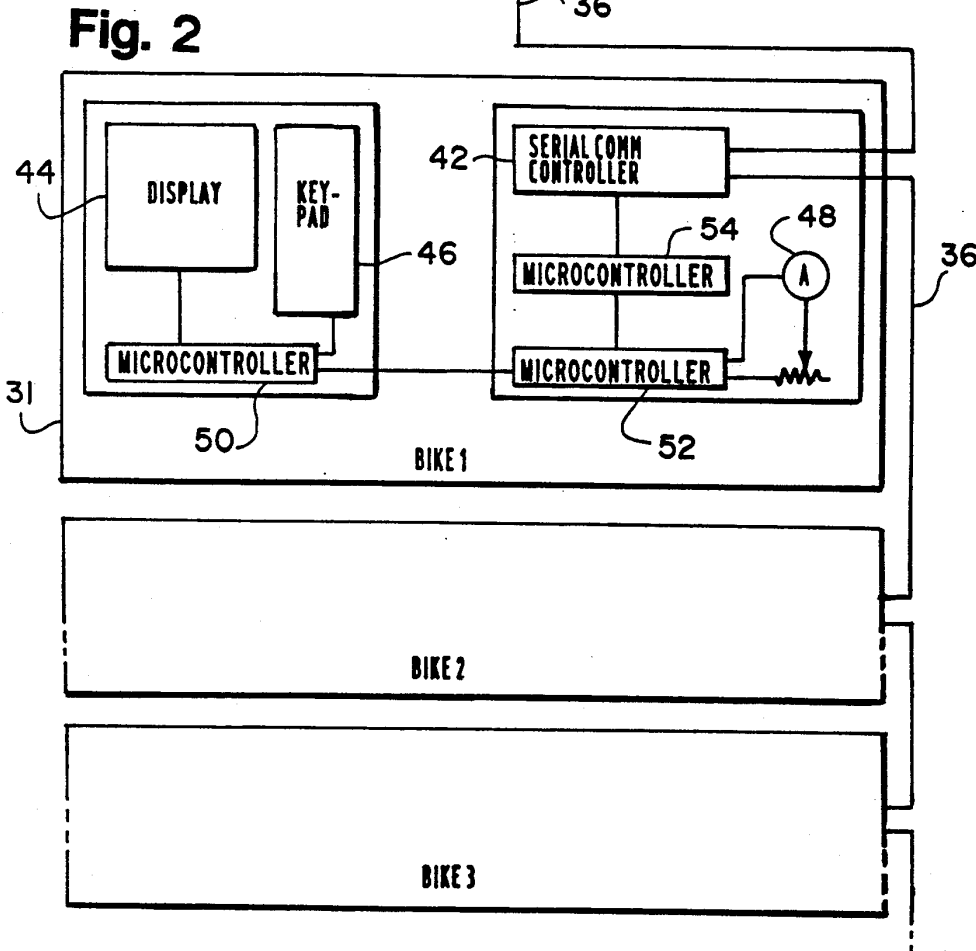
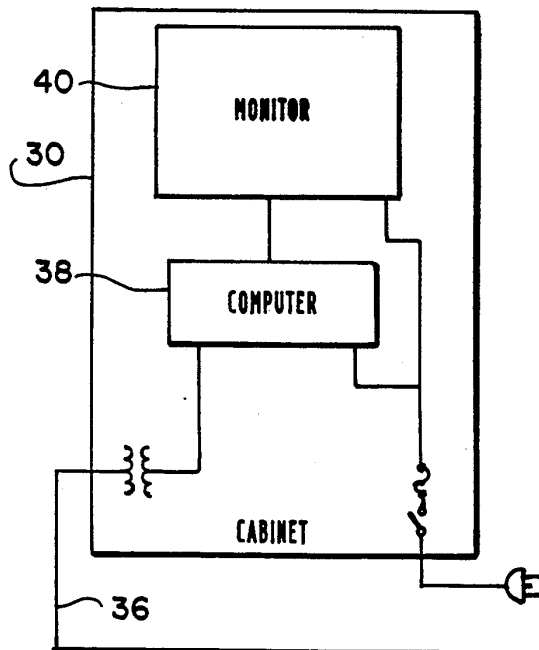
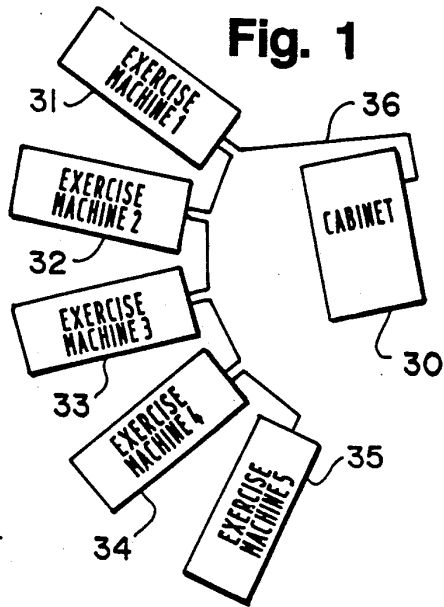
## [56] References Cited

### U.S. PATENT DOCUMENTS

1,525,278 2/1925 Doglione ..... 272/73  
3,729,193 4/1973 Labis ..... 273/138 A  
4,278,095 7/1981 Lapeyre ..... 128/689  
4,408,613 10/1983 Reylea ..... 128/670  
4,542,897 9/1985 Melton et al. .  
4,674,741 6/1987 Pasierb, Jr. et al. .... 272/129 X  
4,735,410 4/1988 Nobuta .  
4,817,940 4/1989 Shaw et al. .  
4,828,257 5/1989 Dyer et al. .  
4,831,242 5/1989 Englehardt et al. .  
4,842,266 6/1989 Sweeney, Sr. et al. .  
4,919,416 4/1990 DeCloux ..... 272/69

24 Claims, 21 Drawing Sheets





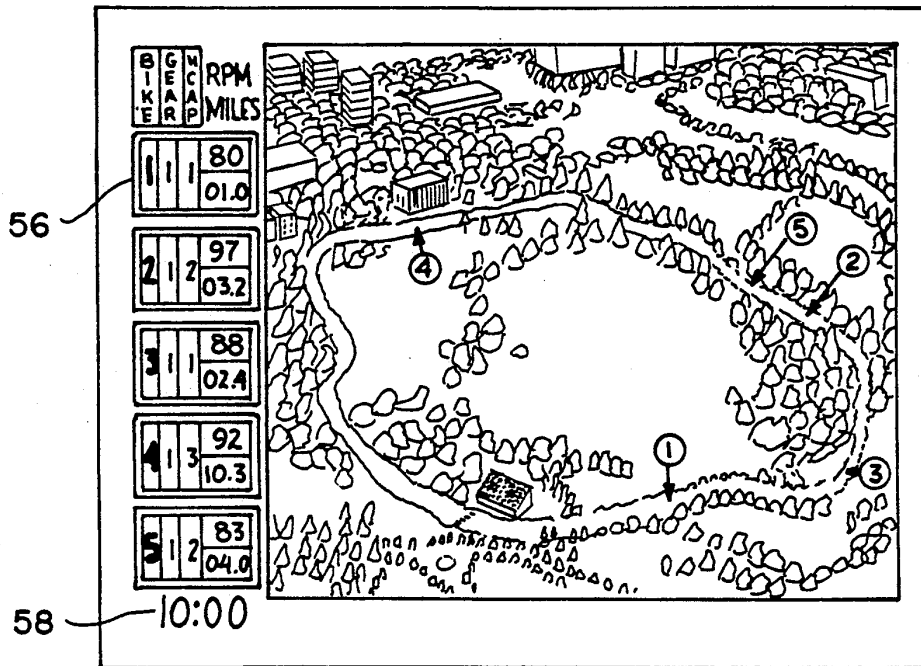


Fig. 3

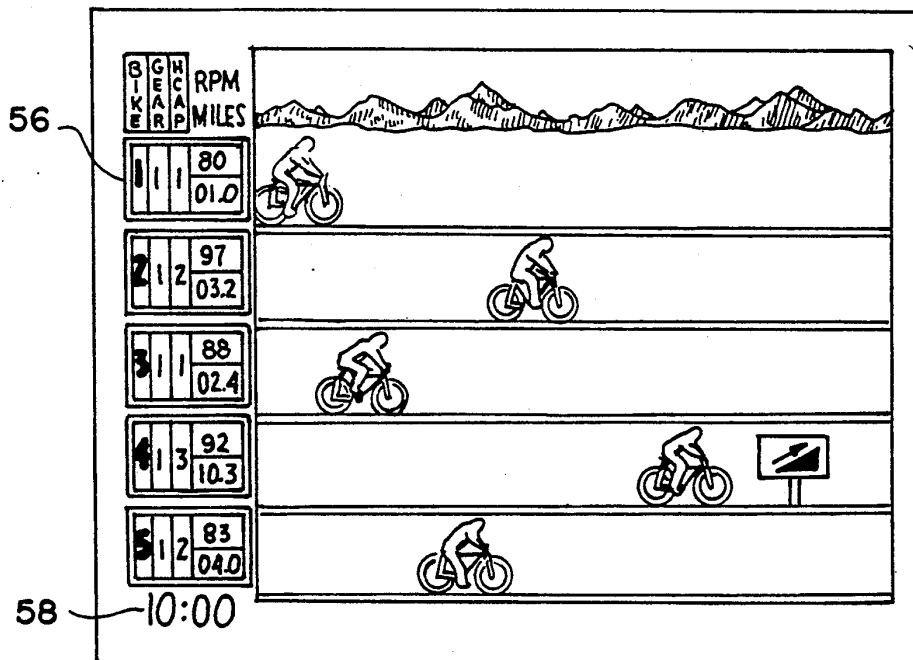


Fig. 4

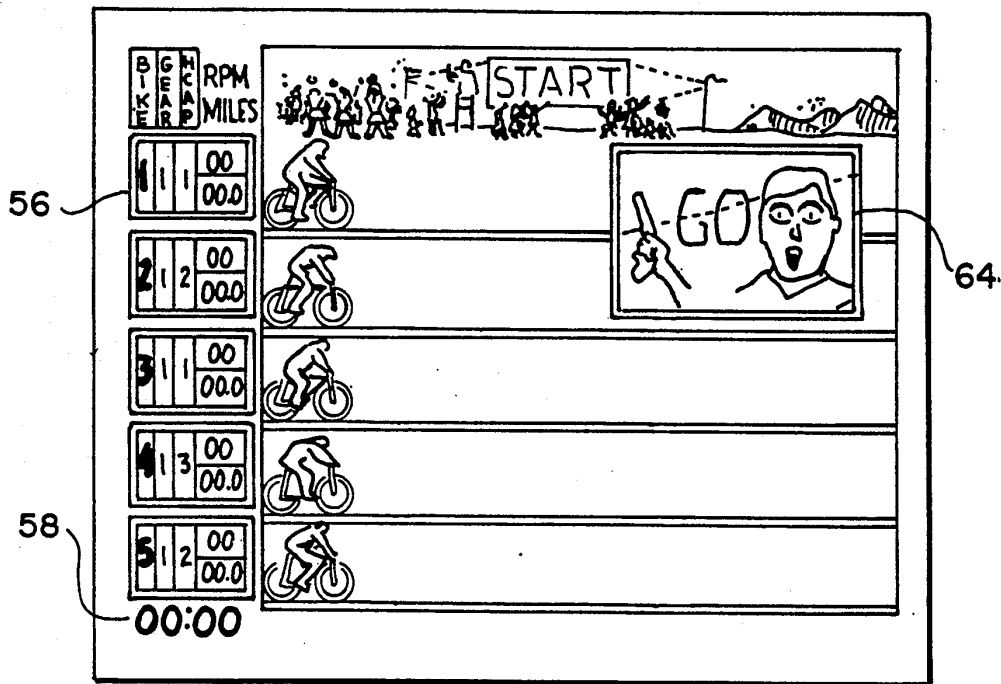


Fig. 5

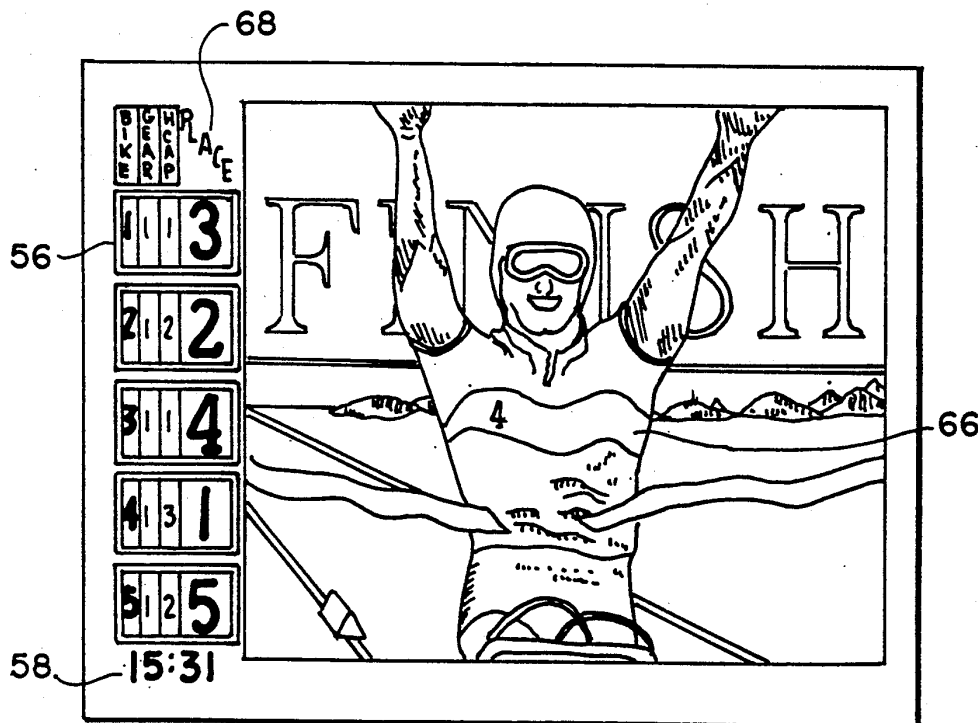
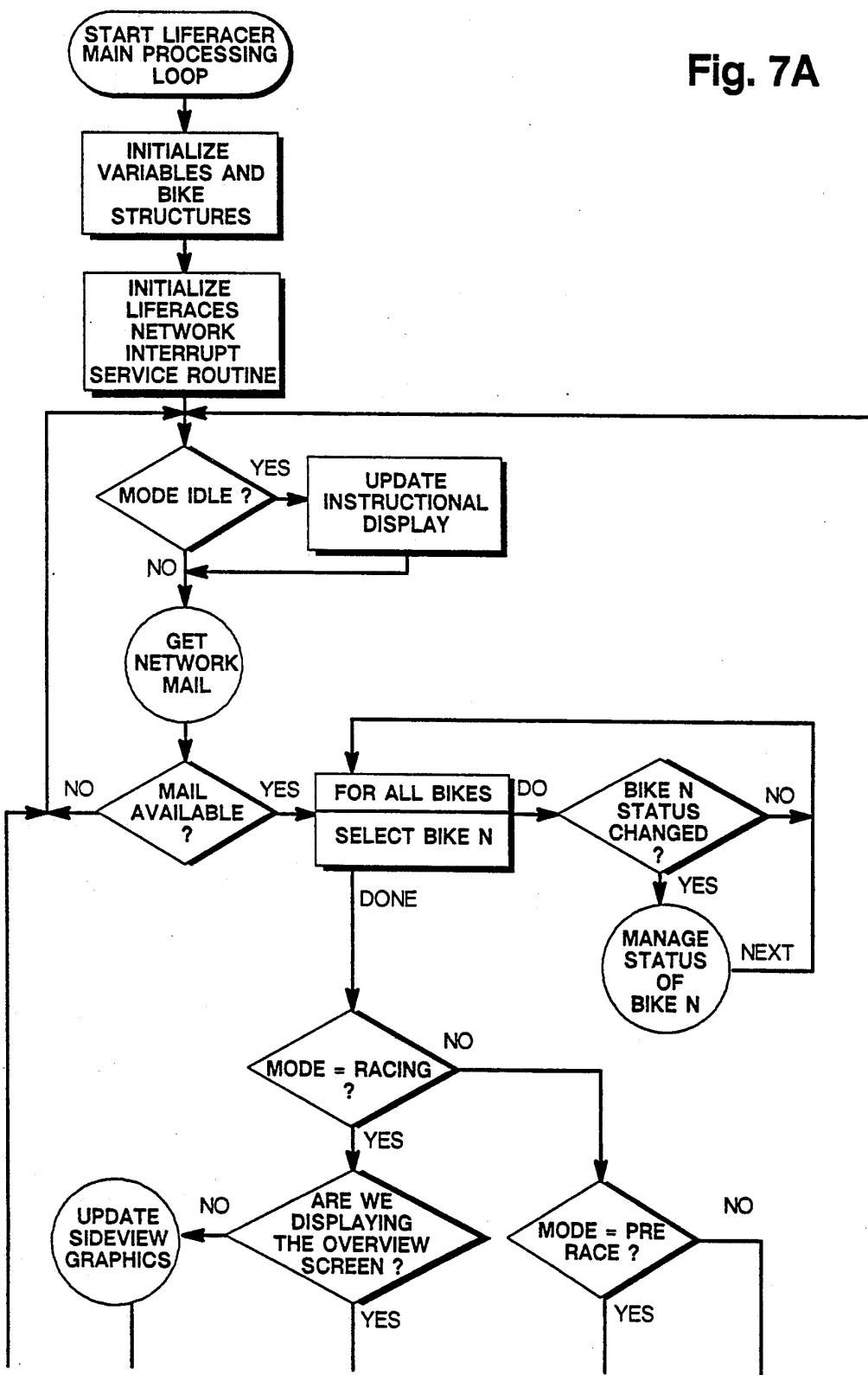


Fig. 6

Fig. 7A



# Explore Litigation Insights

Docket Alarm provides insights to develop a more informed litigation strategy and the peace of mind of knowing you're on top of things.

## Real-Time Litigation Alerts



Keep your litigation team up-to-date with **real-time alerts** and advanced team management tools built for the enterprise, all while greatly reducing PACER spend.

Our comprehensive service means we can handle Federal, State, and Administrative courts across the country.

## Advanced Docket Research



With over 230 million records, Docket Alarm's cloud-native docket research platform finds what other services can't. Coverage includes Federal, State, plus PTAB, TTAB, ITC and NLRB decisions, all in one place.

Identify arguments that have been successful in the past with full text, pinpoint searching. Link to case law cited within any court document via Fastcase.

## Analytics At Your Fingertips



Learn what happened the last time a particular judge, opposing counsel or company faced cases similar to yours.

Advanced out-of-the-box PTAB and TTAB analytics are always at your fingertips.

## API

Docket Alarm offers a powerful API (application programming interface) to developers that want to integrate case filings into their apps.

## LAW FIRMS

Build custom dashboards for your attorneys and clients with live data direct from the court.

Automate many repetitive legal tasks like conflict checks, document management, and marketing.

## FINANCIAL INSTITUTIONS

Litigation and bankruptcy checks for companies and debtors.

## E-DISCOVERY AND LEGAL VENDORS

Sync your system to PACER to automate legal marketing.