



US007149506B2

(12) **United States Patent**
Osterhout et al.

(10) **Patent No.:** **US 7,149,506 B2**
(45) **Date of Patent:** **Dec. 12, 2006**

(54) **PORTABLE CALL MANAGEMENT SYSTEM**

(75) Inventors: **Gregory T. Osterhout**, Coppell, TX (US); **Kim B. Holmes**, Rowlett, TX (US); **Mark Sosebee**, Plano, TX (US)

(73) Assignee: **Nortel Networks Limited**, St. Laurent (CA)

(*) Notice: Subject to any disclaimer, the term of this patent is extended or adjusted under 35 U.S.C. 154(b) by 13 days.

(21) Appl. No.: **10/199,797**

(22) Filed: **Jul. 19, 2002**

(65) **Prior Publication Data**

US 2002/0187777 A1 Dec. 12, 2002

Related U.S. Application Data

(62) Division of application No. 09/419,175, filed on Oct. 15, 1999.

(51) **Int. Cl.**

H04M 3/42 (2006.01)

H04Q 7/20 (2006.01)

(52) **U.S. Cl.** **455/417**; 455/435.1; 455/436; 455/442; 340/3.5; 340/3.52

(58) **Field of Classification Search** 455/417, 455/412.1, 412.2, 414.1, 415, 425, 458, 459, 455/463, 466, 556.1, 556.2, 442, 445, 435.1, 455/435.2, 435.3, 438, 439, 414.4, 432.2; 709/217, 219, 220, 227; 340/3.52-3.54, 340/825.29, 7.46, 7.47, 7.52, 825.52, 3.5, 340/7.45

See application file for complete search history.

(56) **References Cited**

U.S. PATENT DOCUMENTS

5,862,481	A *	1/1999	Kulkarni et al.	455/432.2
5,913,166	A *	6/1999	Buttitta et al.	455/436
6,161,134	A *	12/2000	Wang et al.	709/220
6,421,536	B1 *	7/2002	Uranaka et al.	455/417
6,526,277	B1 *	2/2003	Zicker et al.	455/426.2
6,856,676	B1 *	2/2005	Pirot et al.	379/201.01
2002/0118800	A1 *	8/2002	Martinez et al.	379/67.1

OTHER PUBLICATIONS

Handley et al., SIP: Session Initiation Protocol; Mar. 1999, pp. 1-134.

3Com Corporation, "Web Clipping Developer's Guide", Document No. 3009-001; Print Date Aug. 7, 1999, pp. 1-93.

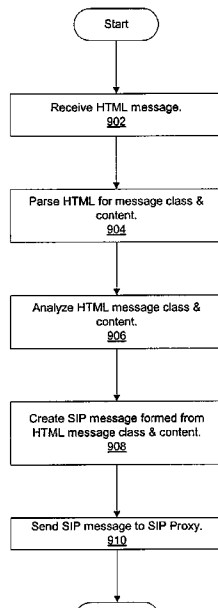
* cited by examiner

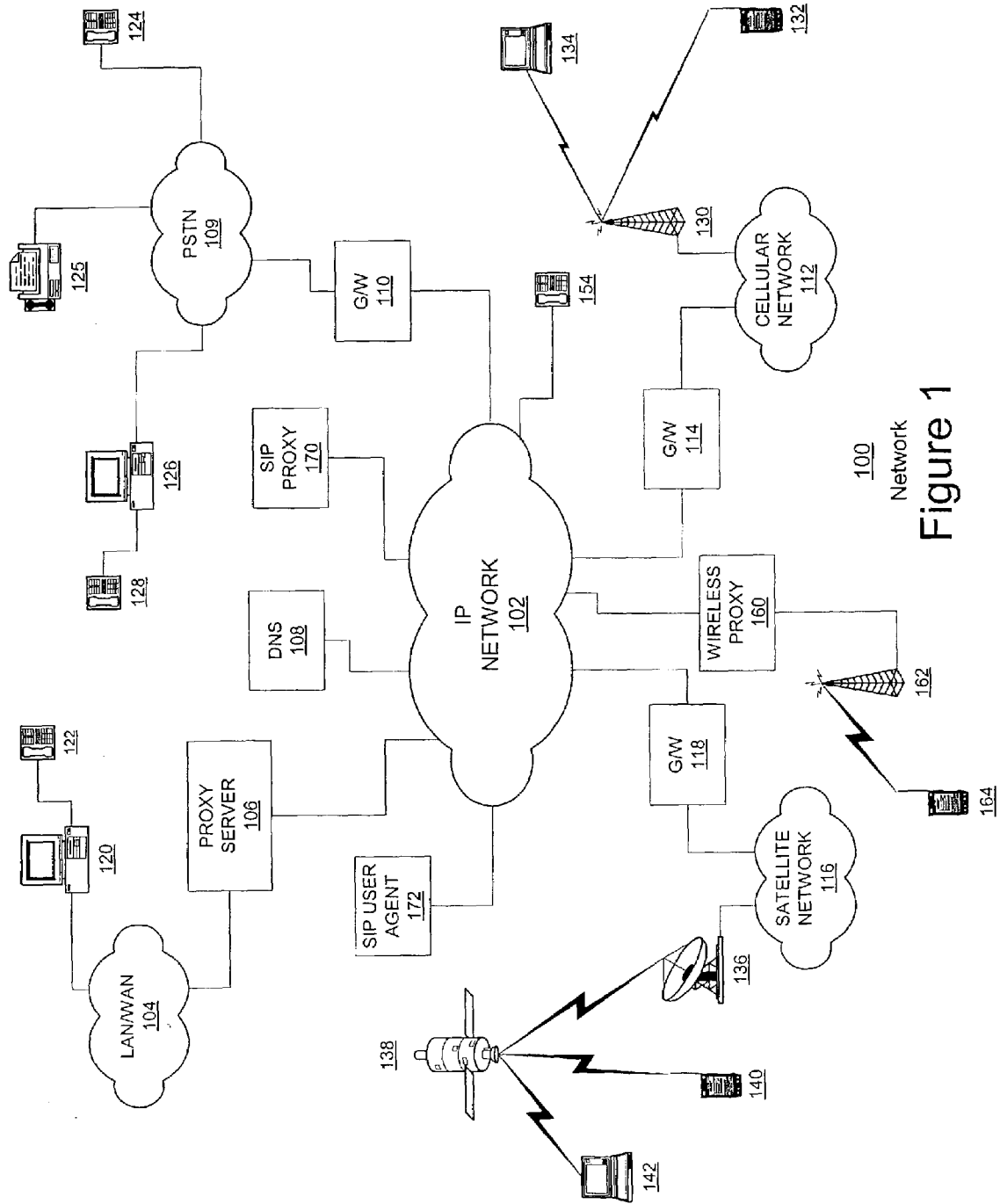
Primary Examiner—Tony T. Nguyen

(57) **ABSTRACT**

A method of redirecting a call from a data processing system to another address. In a preferred embodiment, a notice of an incoming call received from a server at a data processing system. This notice may include caller identification information as well. The user of the data processing system is prompted for an address to which the user wishes the call to be redirected. The user then identifies and sends to the server a new address to which the incoming call is to be redirected. The server then redirects the call to the new address.

15 Claims, 10 Drawing Sheets





100 Network
Figure 1

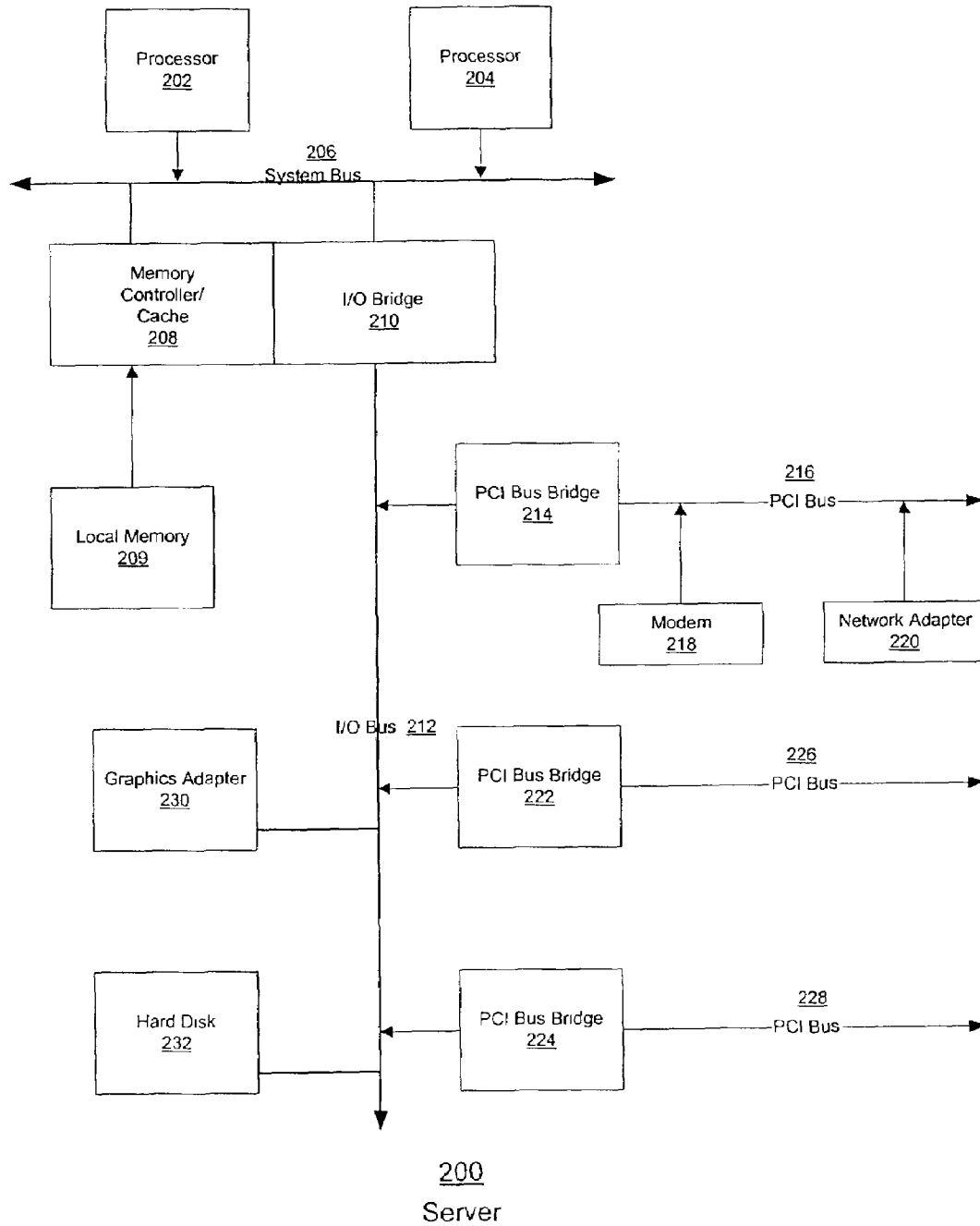
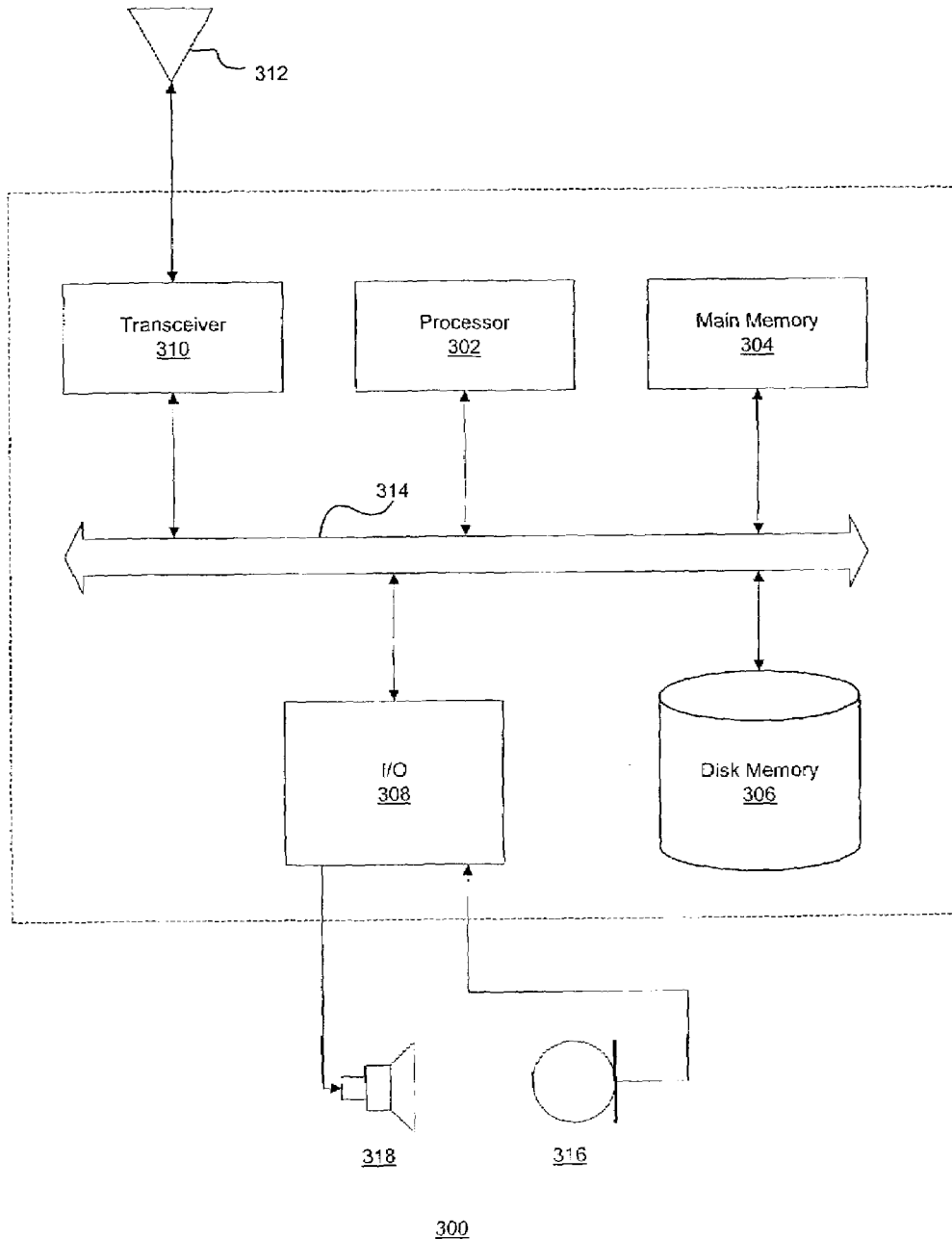
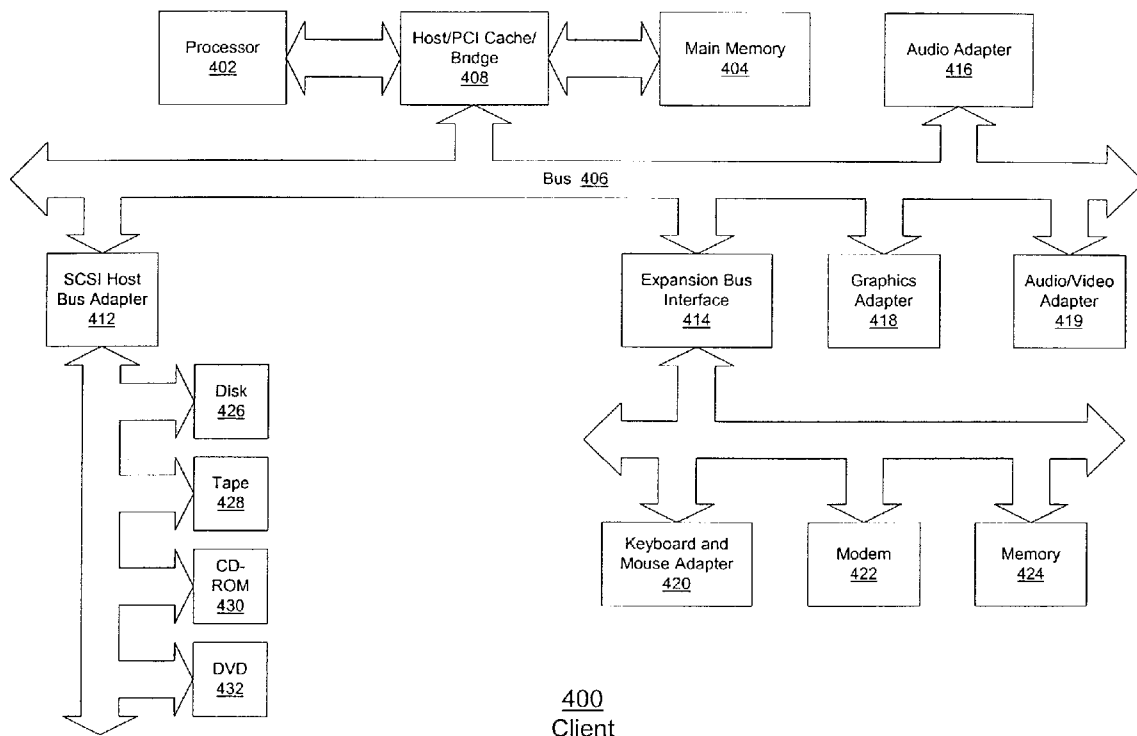


Figure 2



300
Figure 3



400
Client
Figure 4

Explore Litigation Insights

Docket Alarm provides insights to develop a more informed litigation strategy and the peace of mind of knowing you're on top of things.

Real-Time Litigation Alerts



Keep your litigation team up-to-date with **real-time alerts** and advanced team management tools built for the enterprise, all while greatly reducing PACER spend.

Our comprehensive service means we can handle Federal, State, and Administrative courts across the country.

Advanced Docket Research



With over 230 million records, Docket Alarm's cloud-native docket research platform finds what other services can't. Coverage includes Federal, State, plus PTAB, TTAB, ITC and NLRB decisions, all in one place.

Identify arguments that have been successful in the past with full text, pinpoint searching. Link to case law cited within any court document via Fastcase.

Analytics At Your Fingertips



Learn what happened the last time a particular judge, opposing counsel or company faced cases similar to yours.

Advanced out-of-the-box PTAB and TTAB analytics are always at your fingertips.

API

Docket Alarm offers a powerful API (application programming interface) to developers that want to integrate case filings into their apps.

LAW FIRMS

Build custom dashboards for your attorneys and clients with live data direct from the court.

Automate many repetitive legal tasks like conflict checks, document management, and marketing.

FINANCIAL INSTITUTIONS

Litigation and bankruptcy checks for companies and debtors.

E-DISCOVERY AND LEGAL VENDORS

Sync your system to PACER to automate legal marketing.