



US006362840B1

(12) **United States Patent**
Burg et al.

(10) **Patent No.:** **US 6,362,840 B1**
(45) **Date of Patent:** **Mar. 26, 2002**

- (54) **METHOD AND SYSTEM FOR GRAPHIC DISPLAY OF LINK ACTIONS**
- (75) Inventors: **Frederick Murray Burg**, West Long Branch; **Max S. Schoeffler**, Old Bridge, both of NJ (US)
- (73) Assignee: **AT&T Corp.**, New York, NY (US)
- (*) Notice: Subject to any disclaimer, the term of this patent is extended or adjusted under 35 U.S.C. 154(b) by 0 days.

- (21) Appl. No.: **09/166,802**
- (22) Filed: **Oct. 6, 1998**
- (51) **Int. Cl.**⁷ **G06F 3/00**
- (52) **U.S. Cl.** **345/835; 345/708; 345/808; 345/854; 345/862**
- (58) **Field of Search** **345/145, 326, 345/336, 339, 347, 348, 349, 357, 978, 705, 708, 709, 764, 808, 812, 822, 835, 839, 854, 856, 859, 861; 707/501, 501.1**

(56) **References Cited**
U.S. PATENT DOCUMENTS

5,655,093 A	*	8/1997	Frid-Nielsen	345/326
5,784,056 A		7/1998	Nielsen	345/332
5,877,765 A	*	3/1999	Dickman et al.	345/349
5,926,179 A	*	7/1999	Matsuda et al.	345/145 X
5,987,482 A	*	11/1999	Bates et al.	707/513
5,995,102 A	*	11/1999	Rosen et al.	345/339
6,018,345 A	*	1/2000	Berstis	345/357
6,065,057 A	*	5/2000	Rosen et al.	345/339 X
6,088,707 A	*	7/2000	Bates et al.	707/501.1

OTHER PUBLICATIONS

RFC1738, Dec. 1994, InterNic.
 Turning a Cursor Into an Ad But Mainly Just for Laughs, The New York Times, p. G3, Aug. 20, 1998.
 Ken Magel, "Is It Too Late to Put the User Back into HTML?," Internet Watch, p. 131-132, Dec. 1997.*
 Walsum et al., "Feature Extraction and Iconic Visualization", IEEE, vol. 2, p. 111-119, Dec. 1997.*

* cited by examiner

Primary Examiner—Raymond J. Bayerl
Assistant Examiner—X. L. Bautista

(57) **ABSTRACT**

A method and system for presenting an icon on a computer graphic display, the icon being responsive to the type of link area on the computer graphic display. The link area on the computer graphic display is described by link instructions embedded in display format instructions, such as HTML format documents. The visually representative icon is displayed when a cursor, such as that controlled by a mouse, is positioned over the link area. The link instructions support services types such as telephone services, facsimile services, financial services, video services, help services and game services. The link instructions for the new services are described in new URL types or through scripting tools such as Active-X or JAVA scripts. The icons provide a visual representation of the service such as a telephone for telephone services; a dollar sign for financial services; or a video screen for video services. Text and sounds are also provided with the visually representative icon to further illustrate the service type.

26 Claims, 10 Drawing Sheets

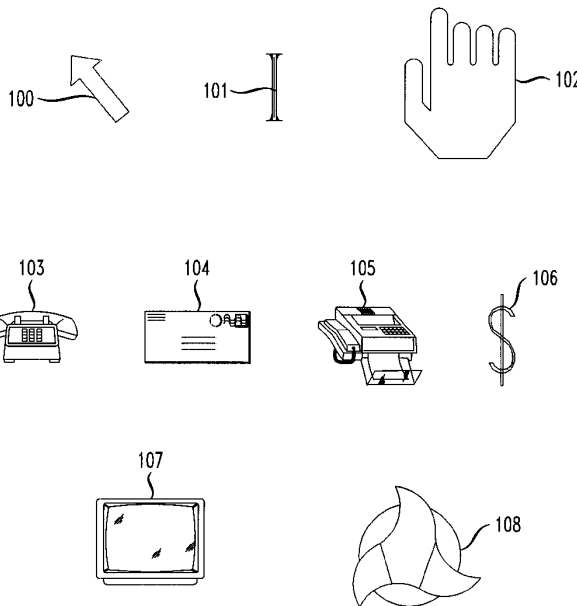


FIG. 1

1

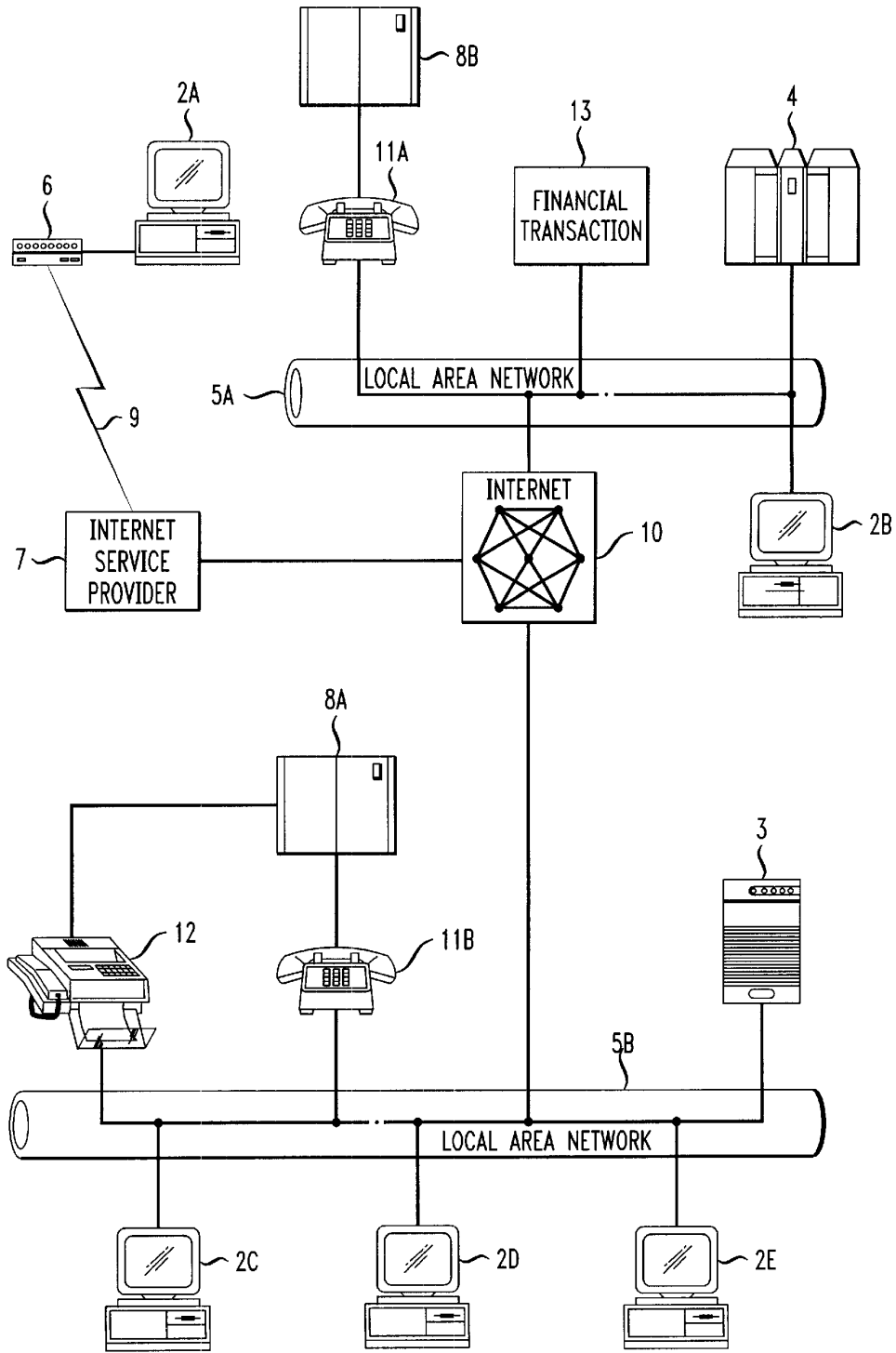


FIG. 2

14

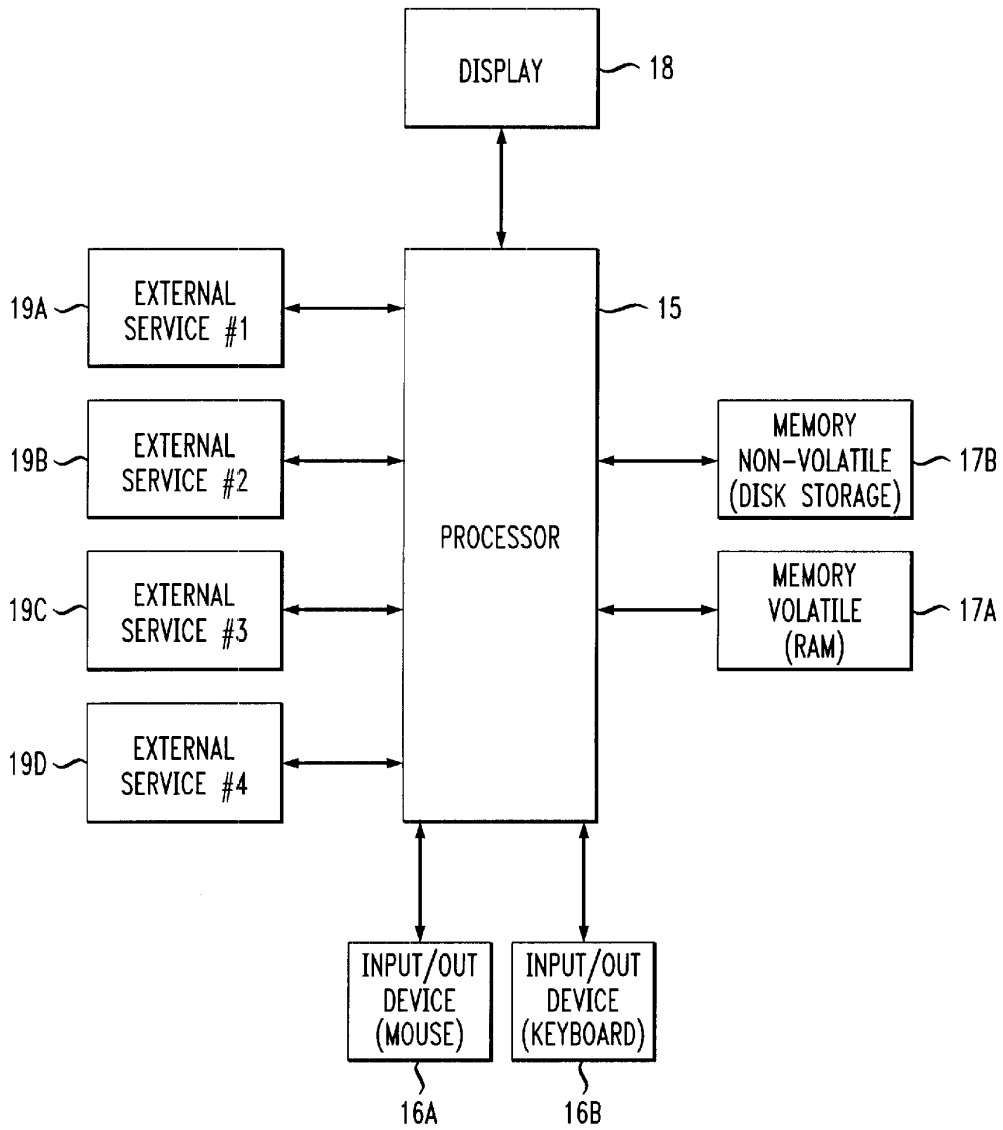


FIG. 3

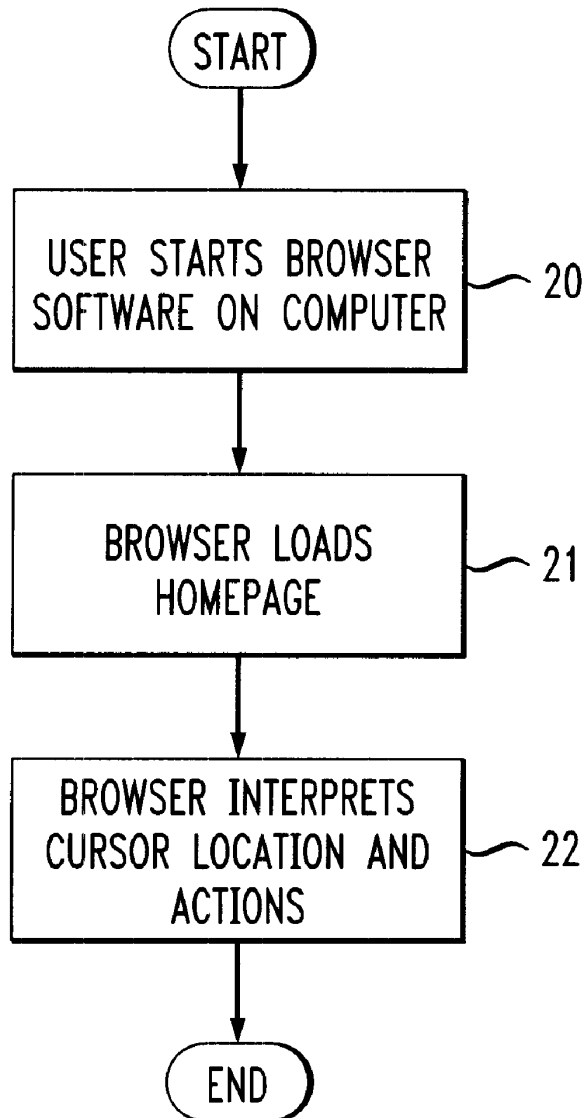
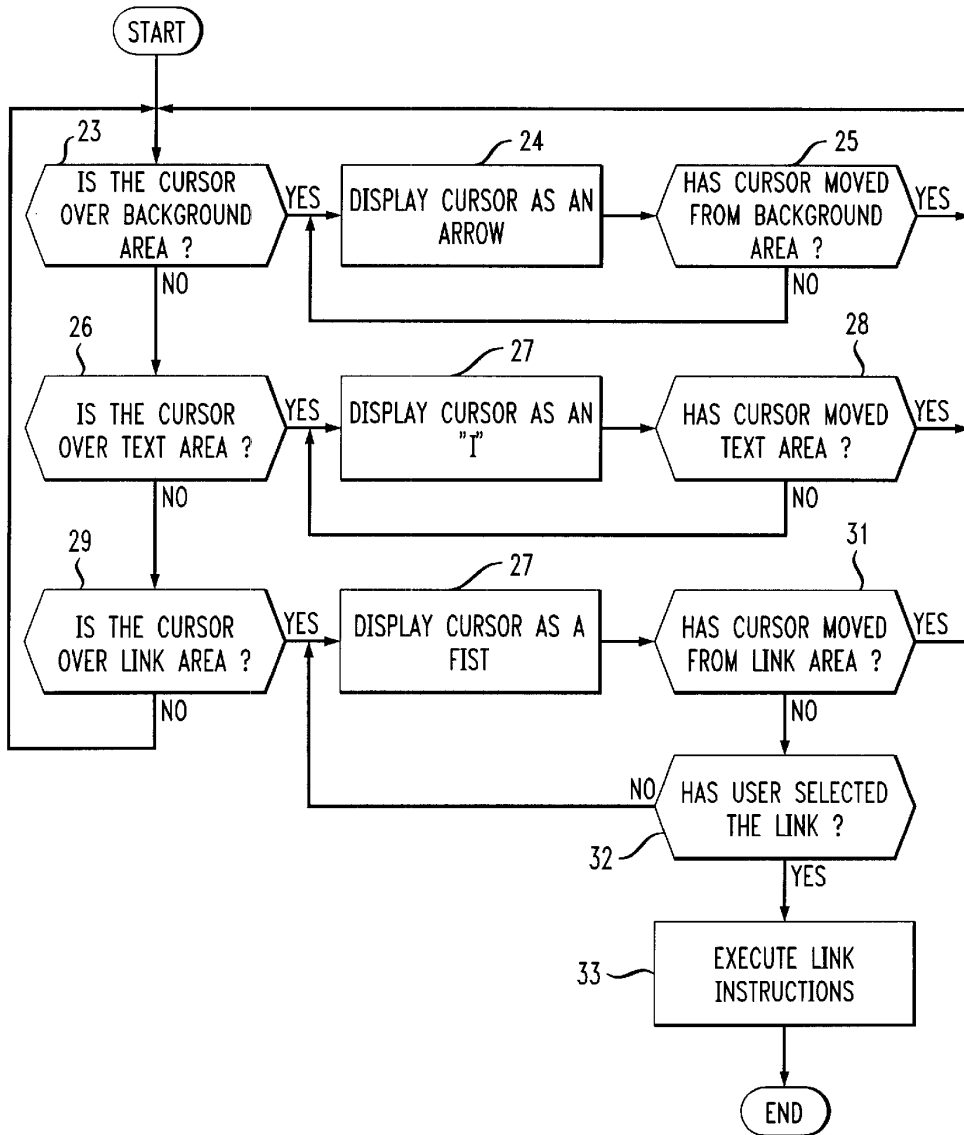


FIG. 4

22



Explore Litigation Insights

Docket Alarm provides insights to develop a more informed litigation strategy and the peace of mind of knowing you're on top of things.

Real-Time Litigation Alerts



Keep your litigation team up-to-date with **real-time alerts** and advanced team management tools built for the enterprise, all while greatly reducing PACER spend.

Our comprehensive service means we can handle Federal, State, and Administrative courts across the country.

Advanced Docket Research



With over 230 million records, Docket Alarm's cloud-native docket research platform finds what other services can't. Coverage includes Federal, State, plus PTAB, TTAB, ITC and NLRB decisions, all in one place.

Identify arguments that have been successful in the past with full text, pinpoint searching. Link to case law cited within any court document via Fastcase.

Analytics At Your Fingertips



Learn what happened the last time a particular judge, opposing counsel or company faced cases similar to yours.

Advanced out-of-the-box PTAB and TTAB analytics are always at your fingertips.

API

Docket Alarm offers a powerful API (application programming interface) to developers that want to integrate case filings into their apps.

LAW FIRMS

Build custom dashboards for your attorneys and clients with live data direct from the court.

Automate many repetitive legal tasks like conflict checks, document management, and marketing.

FINANCIAL INSTITUTIONS

Litigation and bankruptcy checks for companies and debtors.

E-DISCOVERY AND LEGAL VENDORS

Sync your system to PACER to automate legal marketing.