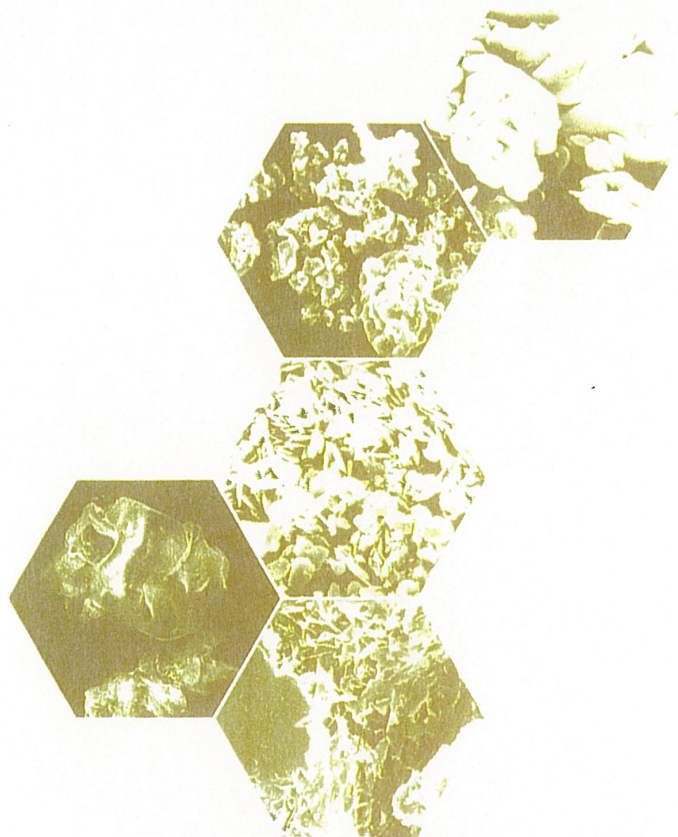


Handbook of Pharmaceutical Excipients

SECOND EDITION

*A joint publication of the American Pharmaceutical Association
and the Royal Pharmaceutical Society of Great Britain*



AMERICAN PHARMACEUTICAL ASSOCIATION

Handbook of
**PHARMACEUTICAL
EXCIPIENTS**

Second Edition

Edited by
Ainley Wade and Paul J Weller

American Pharmaceutical Association
Washington

The Pharmaceutical Press
London

1994

© Copyright 1986, 1994 by the American Pharmaceutical Association, 2215 Constitution Avenue NW, Washington, DC 20037-2985, USA, and The Pharmaceutical Press, Royal Pharmaceutical Society of Great Britain, 1 Lambeth High Street, London, SE1 7JN, England.

A catalogue record for this book is available from the British Library.

Library of Congress Catalog Card Number: 94-79492.

International Standard Book Number (ISBN) in the UK: 0 85369 305 6
International Standard Book Number (ISBN) in the USA: 0 91730 66 8

No part of this publication may be reproduced or transmitted in any form or by any means, electronic or mechanical, including photocopy, recording, or any information storage or retrieval system, without prior written permission from the joint publishers.

Typeset in Great Britain by Alden Multimedia, Northampton.
Printed and bound in Great Britain by

Ethylcellulose

1. Nonproprietary Names

BP: Ethylcellulose
PhEur: Ethylcellulosum
USPNF: Ethylcellulose

2. Synonyms

Aquacoat; E462; *Ethocel*; *Surelease*.

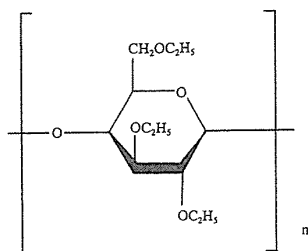
3. Chemical Names and CAS Registry Number

Cellulose ethyl ether [9004-57-3]

4. Empirical Formula Molecular Weight

Ethylcellulose is an ethyl ether of cellulose, a long-chain polymer consisting of anhydroglucose units joined together by acetal linkages. Each anhydroglucose unit has three replaceable hydroxyl groups which are substituted to the extent of 2.25-2.60 ethoxyl groups (OC_2H_5) per unit, equivalent to an ethoxyl content of 44-51%.

5. Structural Formula



Structure shown with complete ethoxyl substitution. *See also* Section 4.

6. Functional Category

Coating agent; tablet binder; viscosity-increasing agent.

7. Applications in Pharmaceutical Formulation or Technology

Ethylcellulose is widely used in oral and topical pharmaceutical formulations.

The main use of ethylcellulose in oral formulations is as a hydrophobic coating agent for tablets and granules.⁽¹⁻⁵⁾ Ethylcellulose coatings are used to modify the release of a drug,⁽⁵⁾ to mask an unpleasant taste, or to improve the stability of a formulation, e.g. ethylcellulose dissolved in propan-2-ol is used to coat ascorbic acid granules to prevent oxidation. Modified release tablet formulations may also be produced using ethylcellulose as a matrix former.⁽⁶⁾

Ethylcellulose, dissolved in an organic solvent, or solvent mixture, can be used on its own to produce water-insoluble films. Higher viscosity ethylcellulose grades tend to produce stronger, tougher films. Ethylcellulose films may be modified, to alter their solubility, by the addition of hydroxypropylmethylcellulose⁽⁷⁾ or a plasticizer, *see* Section 19. An aqueous polymer dispersion (or latex) of ethylcellulose such as *Aquacoat* (FMC Corporation) may also be used to produce

ethylcellulose films without the need for organic solvents. With coats of hydrated ethylcellulose, drug release is via diffusion. This can be a slow process unless a large surface area is utilized and aqueous ethylcellulose dispersions tend therefore to be used to coat granules.^(8,9)

Ethylcellulose is also widely used in drug microencapsulation,⁽¹⁰⁻¹⁴⁾ high viscosity grades usually being used. Release of a drug from an ethylcellulose microcapsule is a function of the microcapsule wall thickness.⁽¹²⁾

In tablet formulations, ethylcellulose may additionally be employed as a binder, the ethylcellulose being blended dry or wet-granulated with a solvent such as ethanol (95%). Ethylcellulose produces hard tablets, with low friability; they may however demonstrate poor dissolution.

In topical formulations, ethylcellulose is used as a thickening agent in creams, lotions or gels, provided an appropriate solvent is used.

Ethylcellulose is additionally used in cosmetics and food products.

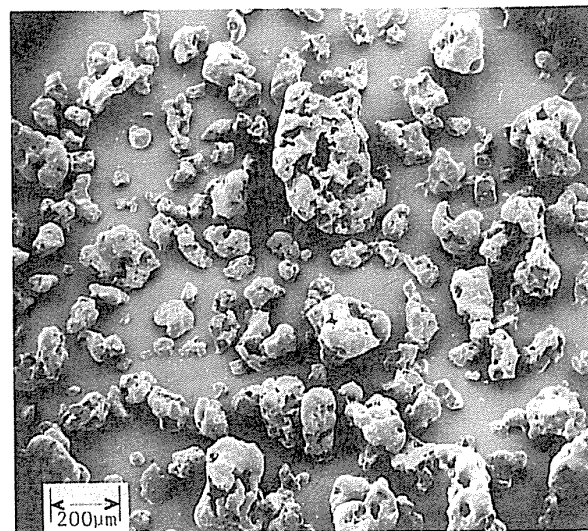
Use	Concentration (%)
Microencapsulation	10.0-20.0
Sustained release tablet coating	3.0-10.0
Tablet coating	1.0-3.0
Tablet granulation	1.0-3.0

8. Description

Ethylcellulose is a tasteless, free-flowing, white to light tan colored powder.

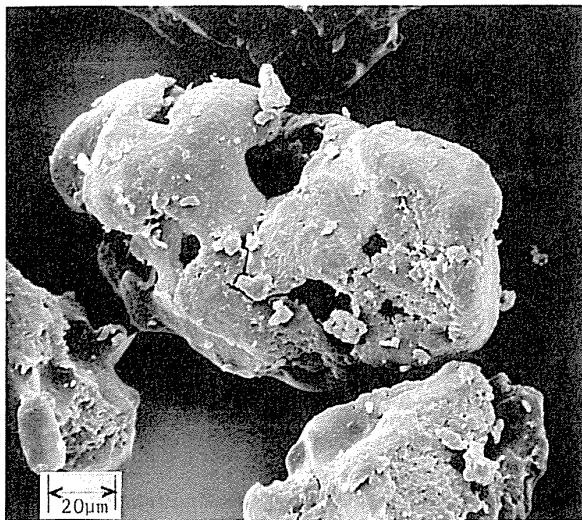
SEM: 1

Excipient: Ethylcellulose
Manufacturer: Hercules Ltd
Lot No.: 57911
Magnification: 60x
Voltage: 10 kV

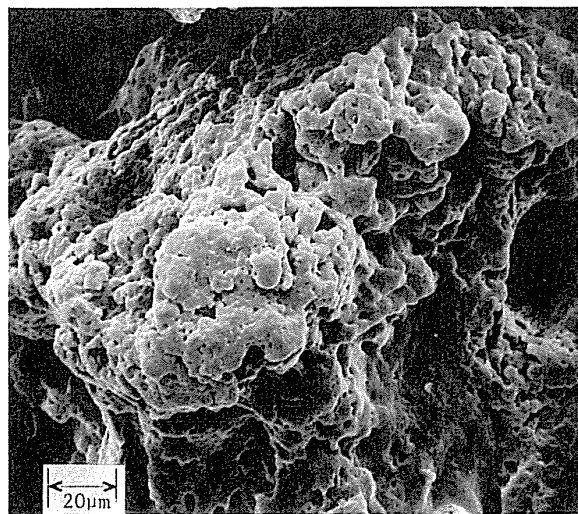


SEM: 2

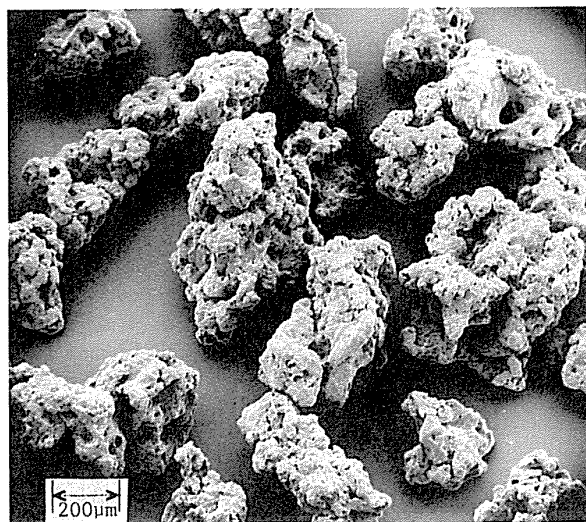
Excipient: Ethylcellulose
 Manufacturer: Hercules Ltd
 Lot No.: 57911
 Magnification: 600x
 Voltage: 10 kV

**SEM: 4**

Excipient: Ethylcellulose (*Ethocel*)
 Manufacturer: Dow Chemical Company
 Lot No.: 103051
 Magnification: 600x
 Voltage: 10 kV

**SEM: 3**

Excipient: Ethylcellulose (*Ethocel*)
 Manufacturer: Dow Chemical Company
 Lot No.: 103051
 Magnification: 60x
 Voltage: 10 kV

**9. Pharmacopeial Specifications**

Test	PhEur 1993	USPNF XVII
Identification	+	+
pH (2% w/w suspension)	5.0-7.5	—
Viscosity	+	+
Loss on drying	≤ 3.0%	≤ 3.0%
Residue on ignition	—	≤ 0.4%
Sulfated ash	≤ 0.5%	—
Arsenic	—	≤ 3 ppm
Lead	—	≤ 10 ppm
Heavy metals	≤ 20 ppm	≤ 40 ppm
Acetaldehyde	≤ 100 ppm	—
Chlorides	≤ 0.05%	—
Assay (of ethoxyl groups)	—	44.0-51.0%

10. Typical Properties

Density (bulk): 0.4 g/cm³

Glass transition temperature: 130-133°C⁽³⁾

Hygroscopicity: ethylcellulose absorbs very little water at high relative humidities or during immersion; any absorbed water evaporates readily.⁽¹⁵⁾ See also HPE Data.

Solubility: practically insoluble in glycerin, propylene glycol and water. Ethylcellulose that contains less than 46.5% of ethoxyl groups is freely soluble in chloroform, methyl acetate, tetrahydrofuran, and in mixtures of aromatic hydrocarbons with ethanol (95%). Ethylcellulose that contains not less than 46.5% of ethoxyl groups is freely soluble in chloroform, ethanol (95%), ethyl acetate, methanol and toluene.

Specific gravity: 1.12-1.15

Viscosity: various grades of ethylcellulose are commercially available which differ in their ethoxyl content and degree of polymerization. They may be used to produce 5% w/v

Explore Litigation Insights

Docket Alarm provides insights to develop a more informed litigation strategy and the peace of mind of knowing you're on top of things.

Real-Time Litigation Alerts



Keep your litigation team up-to-date with **real-time alerts** and advanced team management tools built for the enterprise, all while greatly reducing PACER spend.

Our comprehensive service means we can handle Federal, State, and Administrative courts across the country.

Advanced Docket Research



With over 230 million records, Docket Alarm's cloud-native docket research platform finds what other services can't. Coverage includes Federal, State, plus PTAB, TTAB, ITC and NLRB decisions, all in one place.

Identify arguments that have been successful in the past with full text, pinpoint searching. Link to case law cited within any court document via Fastcase.

Analytics At Your Fingertips



Learn what happened the last time a particular judge, opposing counsel or company faced cases similar to yours.

Advanced out-of-the-box PTAB and TTAB analytics are always at your fingertips.

API

Docket Alarm offers a powerful API (application programming interface) to developers that want to integrate case filings into their apps.

LAW FIRMS

Build custom dashboards for your attorneys and clients with live data direct from the court.

Automate many repetitive legal tasks like conflict checks, document management, and marketing.

FINANCIAL INSTITUTIONS

Litigation and bankruptcy checks for companies and debtors.

E-DISCOVERY AND LEGAL VENDORS

Sync your system to PACER to automate legal marketing.