



United States Patent [19]

[11] Patent Number: **5,506,490**

DeMuro

[45] Date of Patent: **Apr. 9, 1996**

[54] **METHOD AND APPARATUS FOR DETERMINING EXTERNAL POWER SUPPLY TYPE**

Assistant Examiner—Patrick Law
Attorney, Agent, or Firm—John J. King

[57] **ABSTRACT**

[75] Inventor: **David M. DeMuro**, Cary, Ill.
[73] Assignee: **Motorola, Inc.**, Schaumburg, Ill.

In summary, the present invention provides a method and apparatus for determining an external power supply type and modifying the charging of the internal battery (14) based upon the external power supply type and battery information. The device has an external power adapter (12) used to provide power to the device (10), as well as charging current for the battery which is regulated by the internal battery charger. A microcontroller (20) in the device (10) regulates the charging current to the battery (14). The microcontroller (20) preferably contains an A/D converter (21) which is connected to a pull-up resistor (32) internal to the device, and to a pull-down resistor (34) in the external power adapter (12). The voltage generated by the resistor divider network including the pull-up resistor (32) and the pull-down resistor (34) in the external power adapter is used to identify the external power adapter type. By changing the value of the pull-down resistor (34) in the external power supply to identify the external power supply, the microcontroller (20) in the apparatus may determine the optimum charging profile to use for the battery based upon the charger type and other information relating to the battery.

[21] Appl. No.: **149,686**

[22] Filed: **Nov. 9, 1993**

[51] Int. Cl.⁶ **H01M 10/46**

[52] U.S. Cl. **320/23; 320/39; 320/56; 363/143**

[58] Field of Search **320/2, 15, 22, 320/23, 24, 39, 40, 56; 363/142, 143**

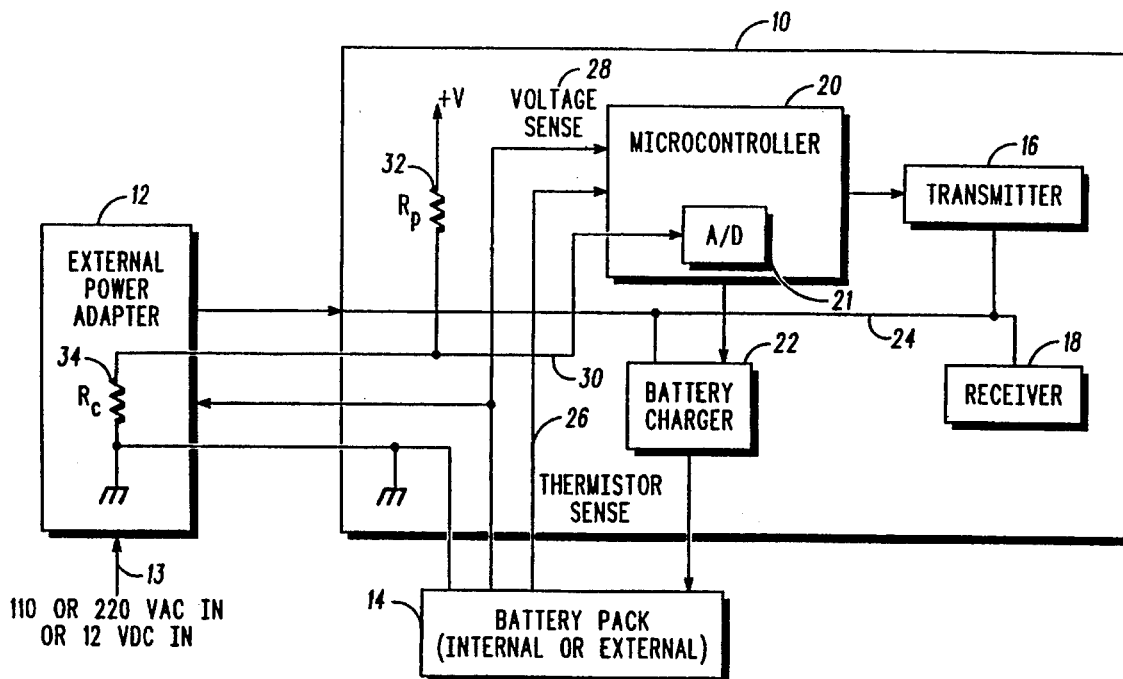
[56] **References Cited**

U.S. PATENT DOCUMENTS

4,232,260	11/1980	Lambkin	320/2
5,162,721	11/1992	Sato	320/15
5,164,652	11/1992	Johnson et al.	320/2
5,237,257	8/1993	Johnson et al.	320/2
5,369,352	11/1994	Toepfer et al.	320/56

Primary Examiner—Peter S. Wong

20 Claims, 4 Drawing Sheets



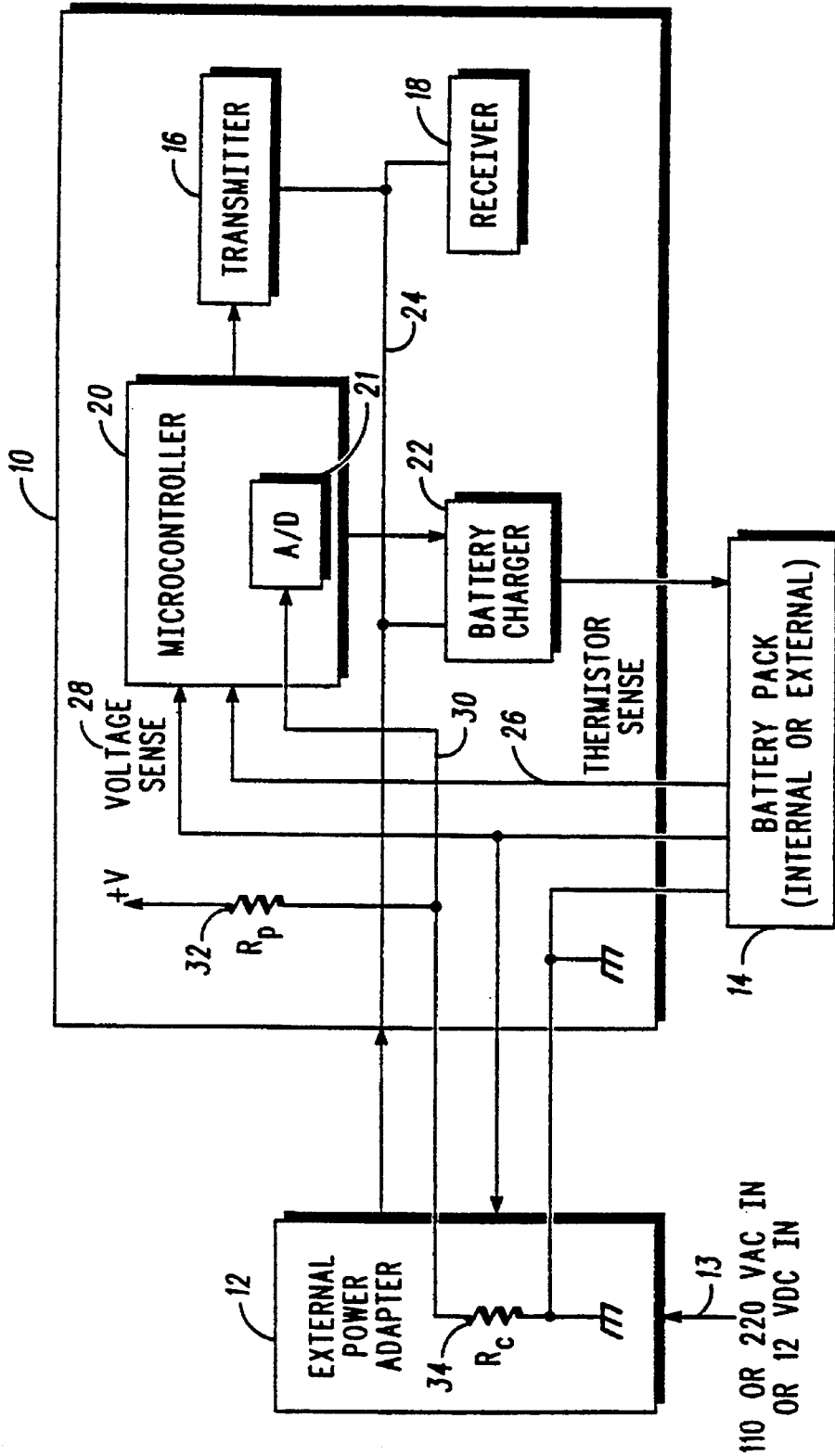


FIG. 1

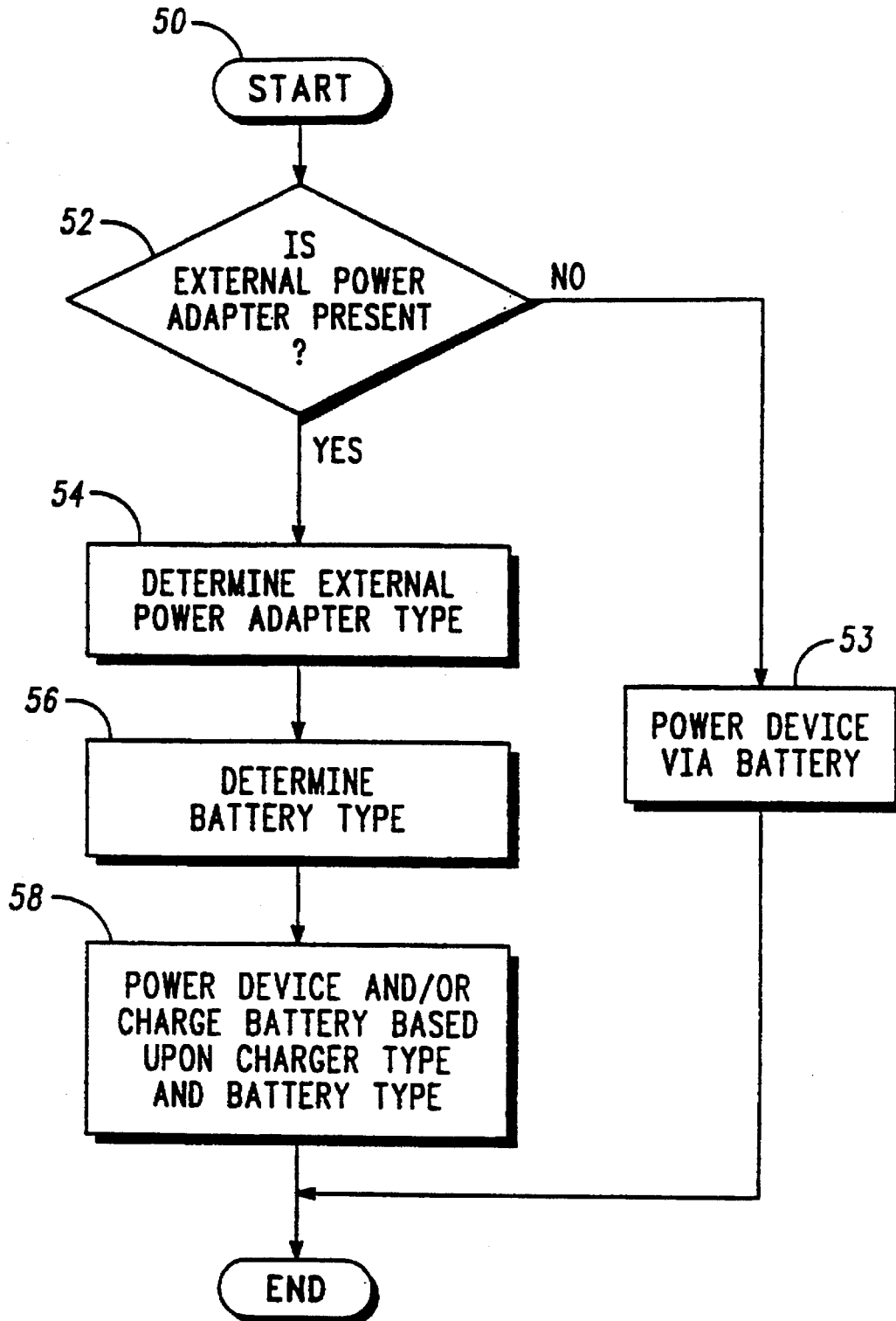


FIG. 2

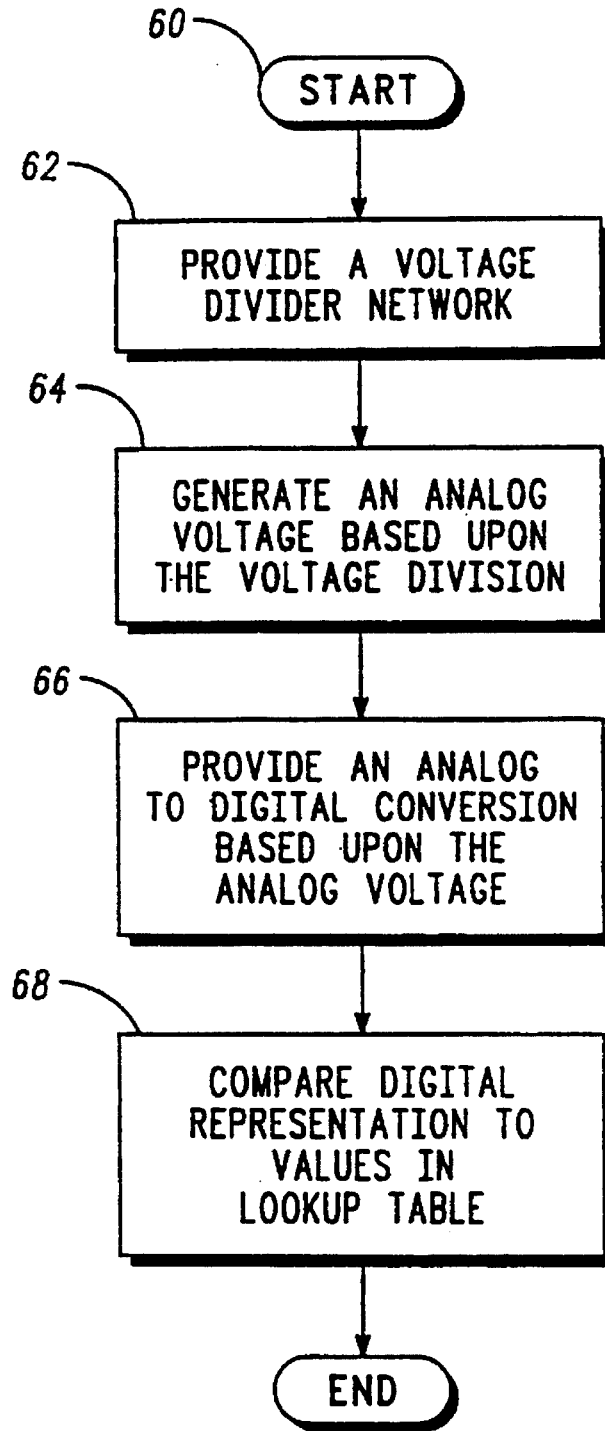


FIG. 3

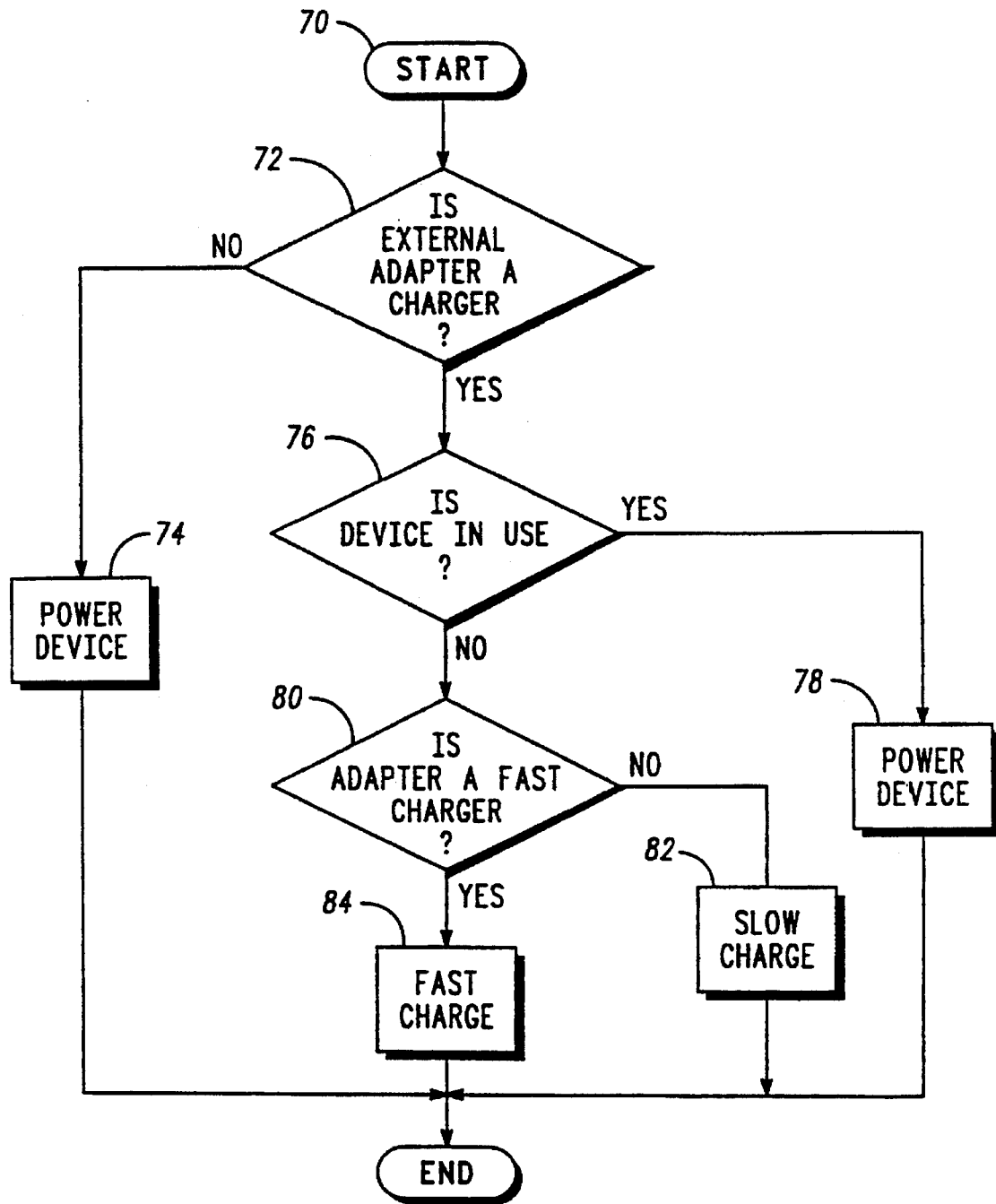


FIG. 4

Explore Litigation Insights

Docket Alarm provides insights to develop a more informed litigation strategy and the peace of mind of knowing you're on top of things.

Real-Time Litigation Alerts



Keep your litigation team up-to-date with **real-time alerts** and advanced team management tools built for the enterprise, all while greatly reducing PACER spend.

Our comprehensive service means we can handle Federal, State, and Administrative courts across the country.

Advanced Docket Research



With over 230 million records, Docket Alarm's cloud-native docket research platform finds what other services can't. Coverage includes Federal, State, plus PTAB, TTAB, ITC and NLRB decisions, all in one place.

Identify arguments that have been successful in the past with full text, pinpoint searching. Link to case law cited within any court document via Fastcase.

Analytics At Your Fingertips



Learn what happened the last time a particular judge, opposing counsel or company faced cases similar to yours.

Advanced out-of-the-box PTAB and TTAB analytics are always at your fingertips.

API

Docket Alarm offers a powerful API (application programming interface) to developers that want to integrate case filings into their apps.

LAW FIRMS

Build custom dashboards for your attorneys and clients with live data direct from the court.

Automate many repetitive legal tasks like conflict checks, document management, and marketing.

FINANCIAL INSTITUTIONS

Litigation and bankruptcy checks for companies and debtors.

E-DISCOVERY AND LEGAL VENDORS

Sync your system to PACER to automate legal marketing.