

[54] SINGLE SENSOR COLOR CAMERA WITH USER SELECTABLE IMAGE RECORD SIZE

[75] Inventors: Kenneth A. Parulski, Rochester; Richard M. Vogel, Pittsford, both of N.Y.; Seishi Ohmori, Tokyo, Japan

[73] Assignee: Eastman Kodak Company, Rochester, N.Y.

[21] Appl. No.: 85,516

[22] Filed: Jun. 30, 1993

[51] Int. Cl.⁶ H04N 5/76

[52] U.S. Cl. 348/233; 348/273; 358/906; 358/909.1

[58] Field of Search 358/209, 909, 358/906, 909.1; 348/207, 266, 272, 273, 233; H04N 5/30, 5/76

[56] References Cited

U.S. PATENT DOCUMENTS

3,971,065	7/1976	Bayer	358/41
4,412,252	10/1983	Moore et al.	358/160
4,468,755	8/1984	Iida	364/900
4,541,010	9/1985	Alston	358/44
4,623,922	11/1986	Wischemann	358/160
4,779,135	10/1988	Judd	358/183
4,821,121	4/1989	Beaulier	358/160
4,876,590	10/1989	Parulski	358/41

5,016,107	5/1991	Sasson et al.	358/209
5,018,017	5/1991	Sasaki et al.	358/209
5,040,068	8/1991	Parulski et al.	358/209
5,097,518	3/1992	Scott et al.	382/47
5,138,459	8/1992	Roberts et al.	358/209
5,164,831	11/1992	Kuchta et al.	358/209

OTHER PUBLICATIONS

"Popular Science", Sep. 1992, p. 65.

Primary Examiner—James J. Groody

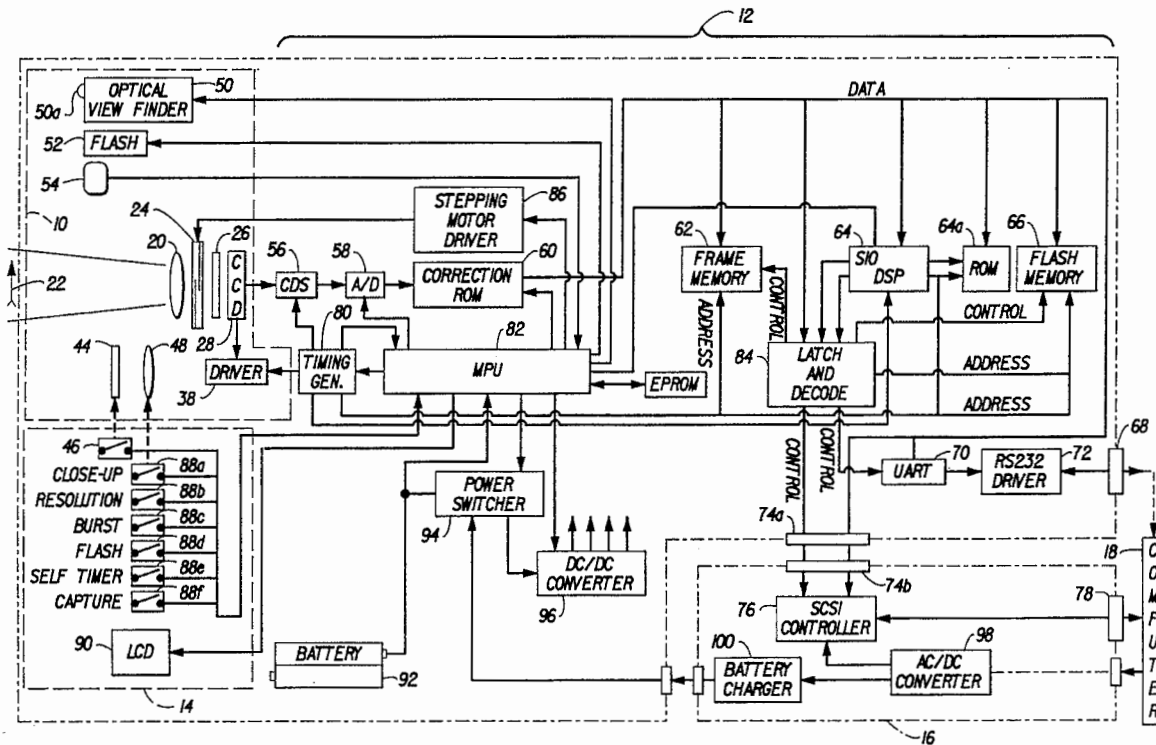
Assistant Examiner—Cheryl Cohen

Attorney, Agent, or Firm—David M. Woods

[57] ABSTRACT

An electronic camera is adapted for processing images of different resolution to provide a user selectable image record size. A buffer memory is provided for storing color image pixels from a sensor as baseband signals corresponding to at least one image. A timing controller responsive to a resolution mode switch controls the order in which color image pixels are selected for storage in both vertical and horizontal directions. The order selected by the resolution switch includes a full resolution mode, and at least one reduced resolution mode in which the color image pixels are sub-sampled such that each chrominance image pixel is selected to be spatially adjacent to a selected luminance image pixel. Additionally, the buffer memory can store a burst of low resolution images.

15 Claims, 5 Drawing Sheets



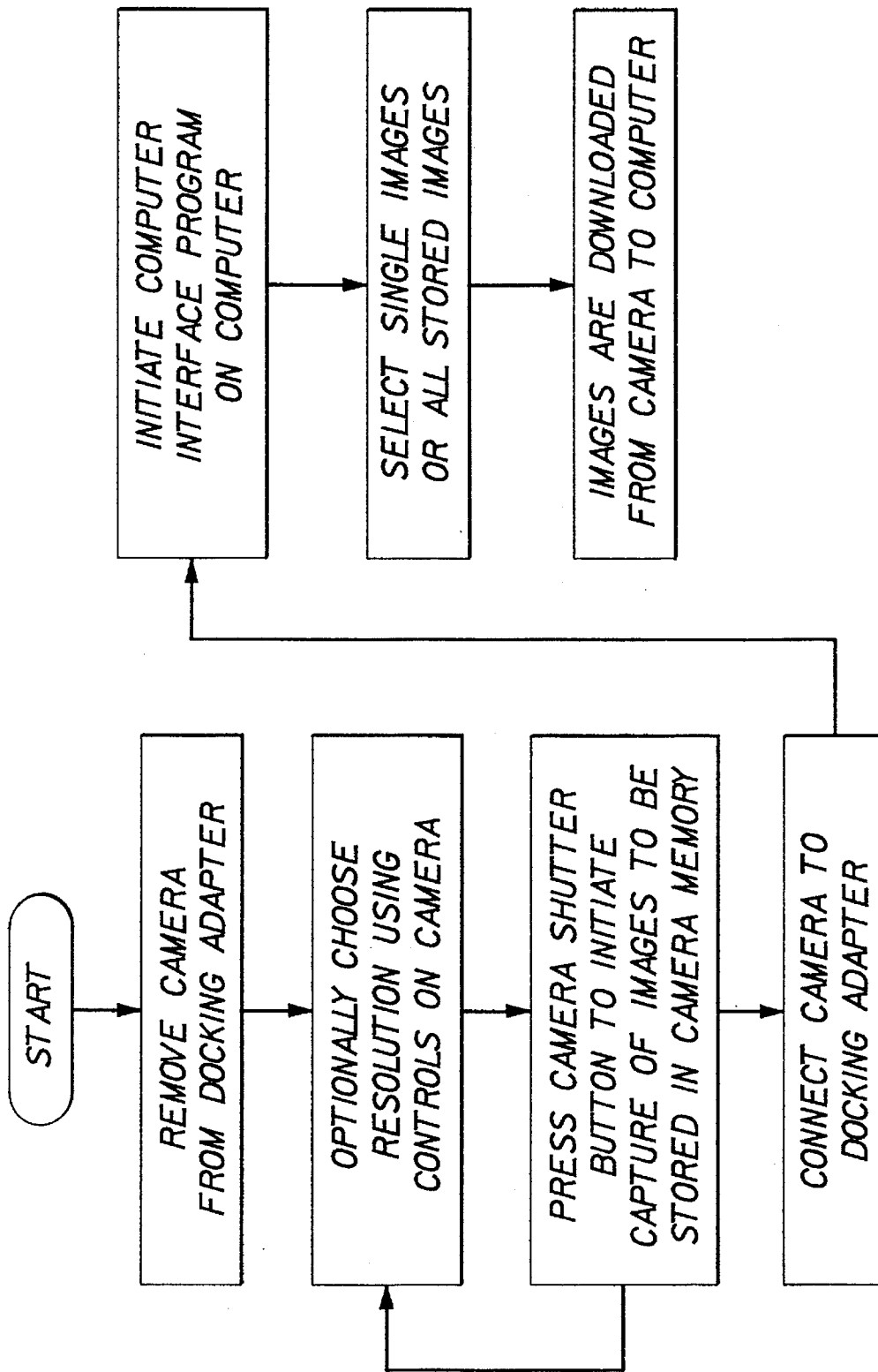


FIG. 2

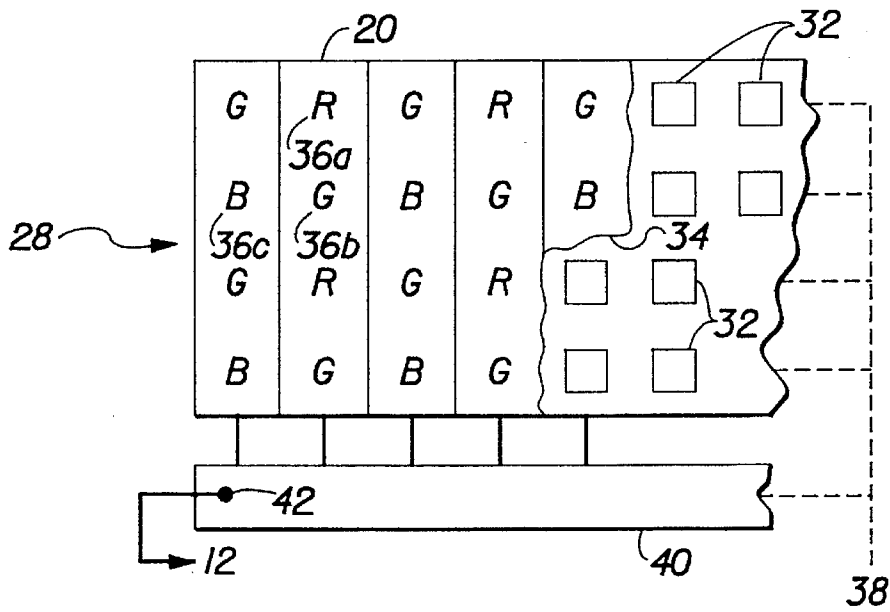


FIG. 3

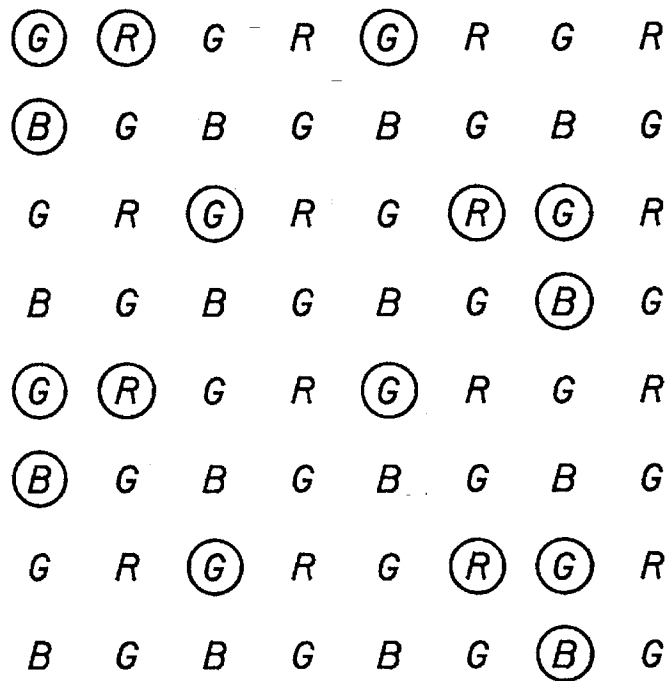


FIG. 4

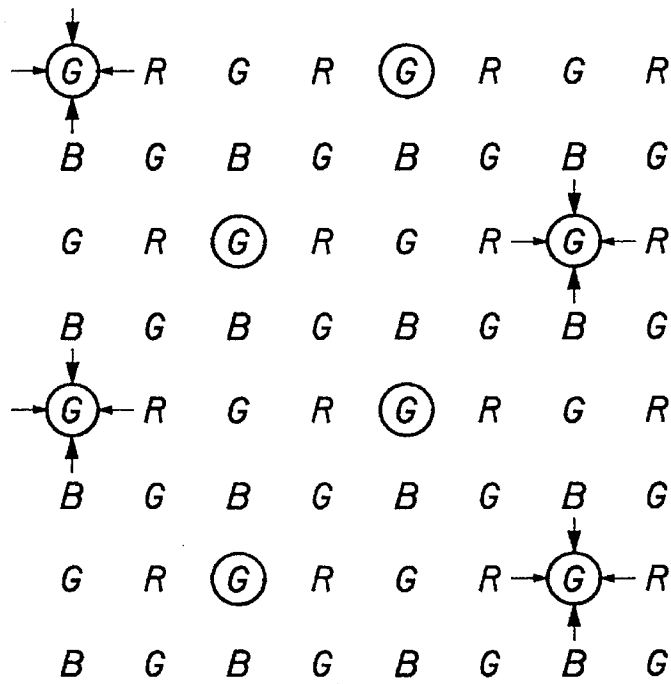


FIG.5

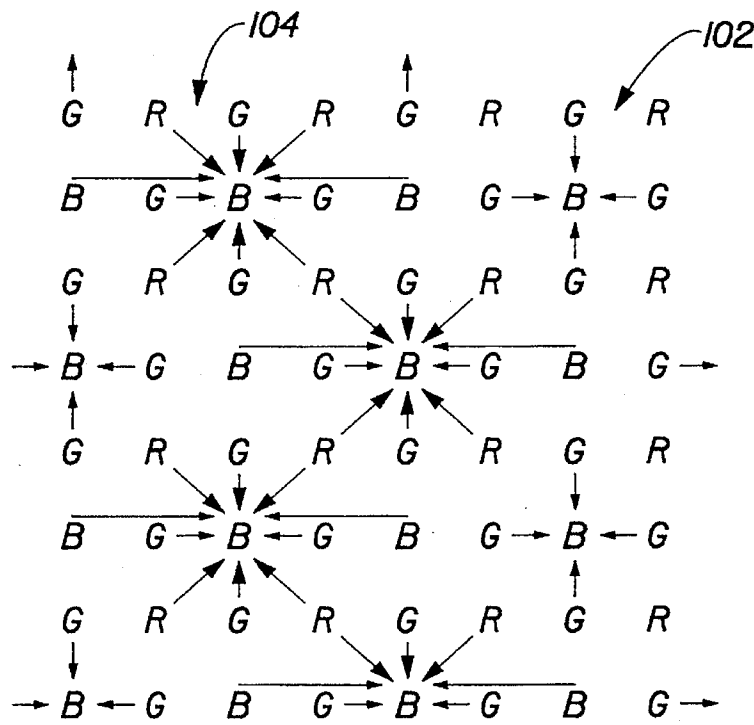


FIG.6

Explore Litigation Insights

Docket Alarm provides insights to develop a more informed litigation strategy and the peace of mind of knowing you're on top of things.

Real-Time Litigation Alerts



Keep your litigation team up-to-date with **real-time alerts** and advanced team management tools built for the enterprise, all while greatly reducing PACER spend.

Our comprehensive service means we can handle Federal, State, and Administrative courts across the country.

Advanced Docket Research



With over 230 million records, Docket Alarm's cloud-native docket research platform finds what other services can't. Coverage includes Federal, State, plus PTAB, TTAB, ITC and NLRB decisions, all in one place.

Identify arguments that have been successful in the past with full text, pinpoint searching. Link to case law cited within any court document via Fastcase.

Analytics At Your Fingertips



Learn what happened the last time a particular judge, opposing counsel or company faced cases similar to yours.

Advanced out-of-the-box PTAB and TTAB analytics are always at your fingertips.

API

Docket Alarm offers a powerful API (application programming interface) to developers that want to integrate case filings into their apps.

LAW FIRMS

Build custom dashboards for your attorneys and clients with live data direct from the court.

Automate many repetitive legal tasks like conflict checks, document management, and marketing.

FINANCIAL INSTITUTIONS

Litigation and bankruptcy checks for companies and debtors.

E-DISCOVERY AND LEGAL VENDORS

Sync your system to PACER to automate legal marketing.