

# United States Patent [19]

Ohmura et al.

[11] **Patent Number:** 6,125,326  
 [45] **Date of Patent:** Sep. 26, 2000

[54] **NAVIGATION SYSTEM**

5,899,956 5/1999 Chan ..... 701/213

[75] Inventors: **Hiroshi Ohmura**, Hatsukaichi; **Koji Hosoda**, Hiroshima-ken; **Hideaki Kikuchi**, Hatsukaichi, all of Japan

## FOREIGN PATENT DOCUMENTS

4-238218 8/1992 Japan .  
 8-318792 12/1996 Japan .

[73] Assignee: **Mazda Motor Corporation**, Hiroshima-ken, Japan

*Primary Examiner*—William A. Cuchlinski, Jr.  
*Assistant Examiner*—Olga Hernandez  
*Attorney, Agent, or Firm*—Sixbey, Friedman, Leedom & Ferguson, P.C.; Donald R. Studebaker

[21] Appl. No.: **08/933,341**[22] Filed: **Sep. 19, 1997**[30] **Foreign Application Priority Data**

Sep. 30, 1996 [JP] Japan ..... 8-259140

[51] **Int. Cl.**<sup>7</sup> ..... **G01S 3/02**; H04B 7/29;  
 G01C 21/00

[52] **U.S. Cl.** ..... **701/213**; 701/211; 701/207;  
 701/201; 701/202; 701/205; 701/206; 342/457;  
 455/456

[58] **Field of Search** ..... 701/213, 211,  
 701/207, 201, 202, 205, 206; 342/457,  
 456

[56] **References Cited**

## U.S. PATENT DOCUMENTS

5,666,272 9/1997 Moore et al. .... 361/735  
 5,710,600 1/1998 Ishii et al. .... 348/563  
 5,760,742 6/1998 Branch et al. .... 342/457  
 5,790,974 8/1998 Tognazzini ..... 455/456  
 5,887,269 3/1999 Brunts et al. .... 701/208  
 5,889,943 3/1999 Ji et al. .... 340/825.34

[57] **ABSTRACT**

A combination of a main navigation apparatus **2** which is fixed to the vehicle and a sub-navigation apparatus **3** which is detachable from the vehicle. When the sub-navigation apparatus **3** is attached, map information and current position information is displayed on a main display **25** under control of a sub-control unit **1**, and state of the vehicle is displayed on a sub-display **33**. When detaching the sub-navigation apparatus **3** from the vehicle, area map information necessary for waking outside of the vehicle is transmitted from an on-vehicle database **22** to a RAM **32**. When the sub-navigation apparatus is detached from the vehicle, if the operation switch **36** is turned on, either the sub-display **33** or a speaker **34** is operated by an sub-navigation unit in a saving power control mode in which either the sub-display **33** or the speaker **34** is operated only for a predetermined period of time since the operation switch **36** is turned on. When information stored in the RAM **32** is not insufficient, additional information is transmitted from the on-vehicle database **22** via a telephone terminal **37**.

18 Claims, 5 Drawing Sheets

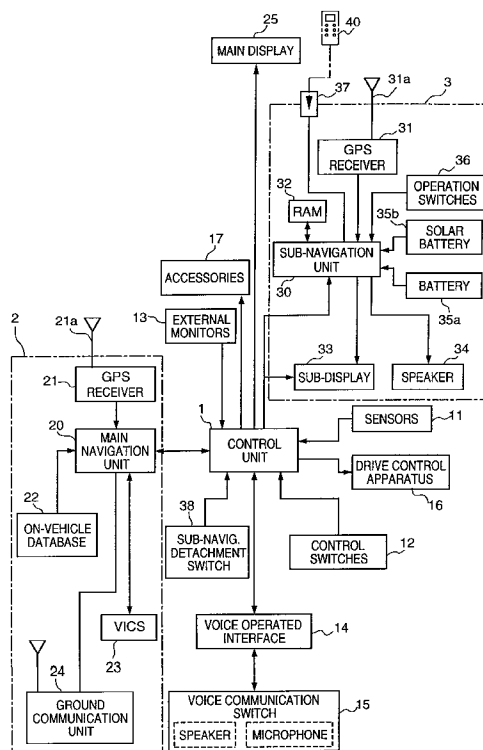
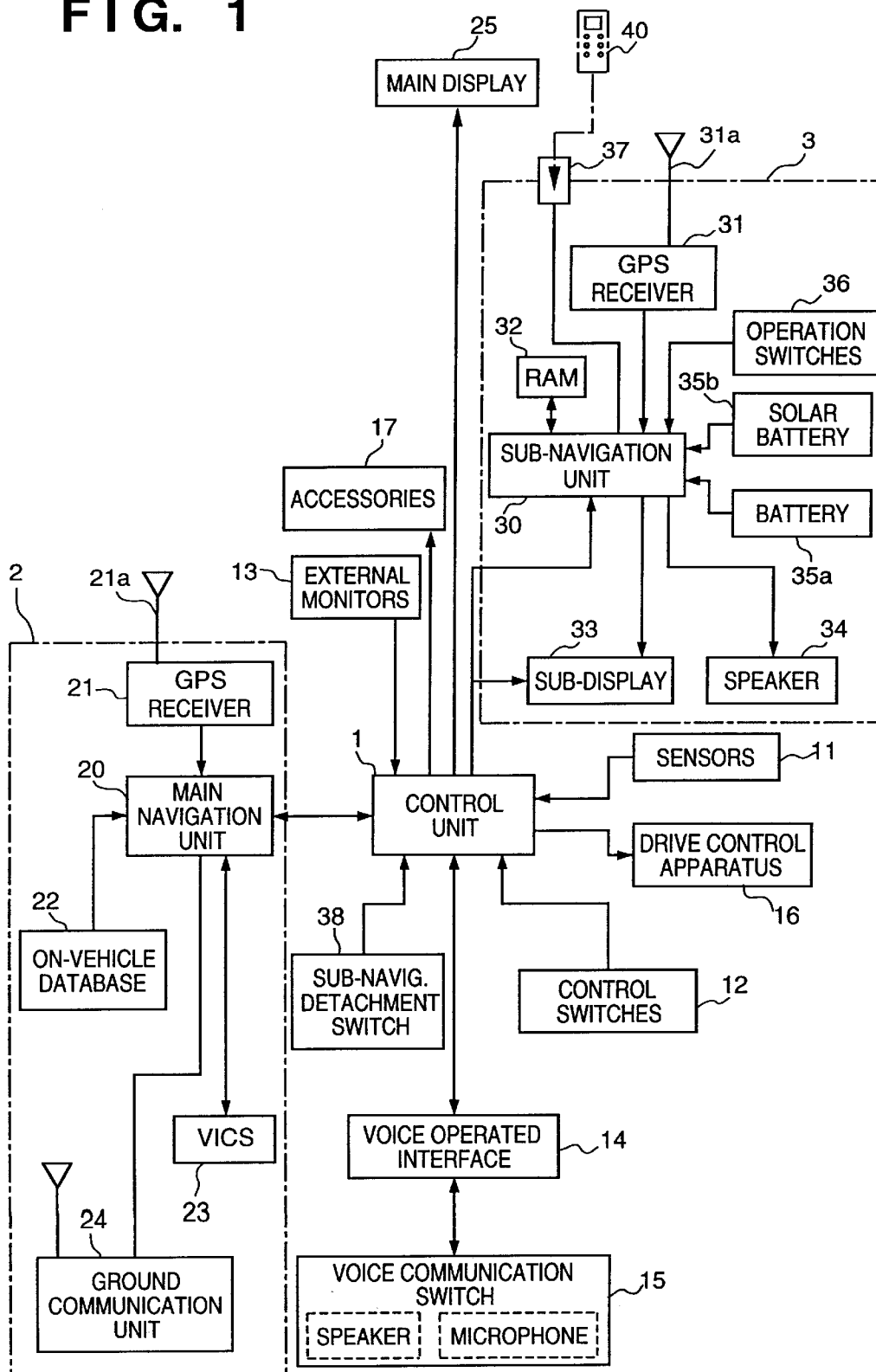
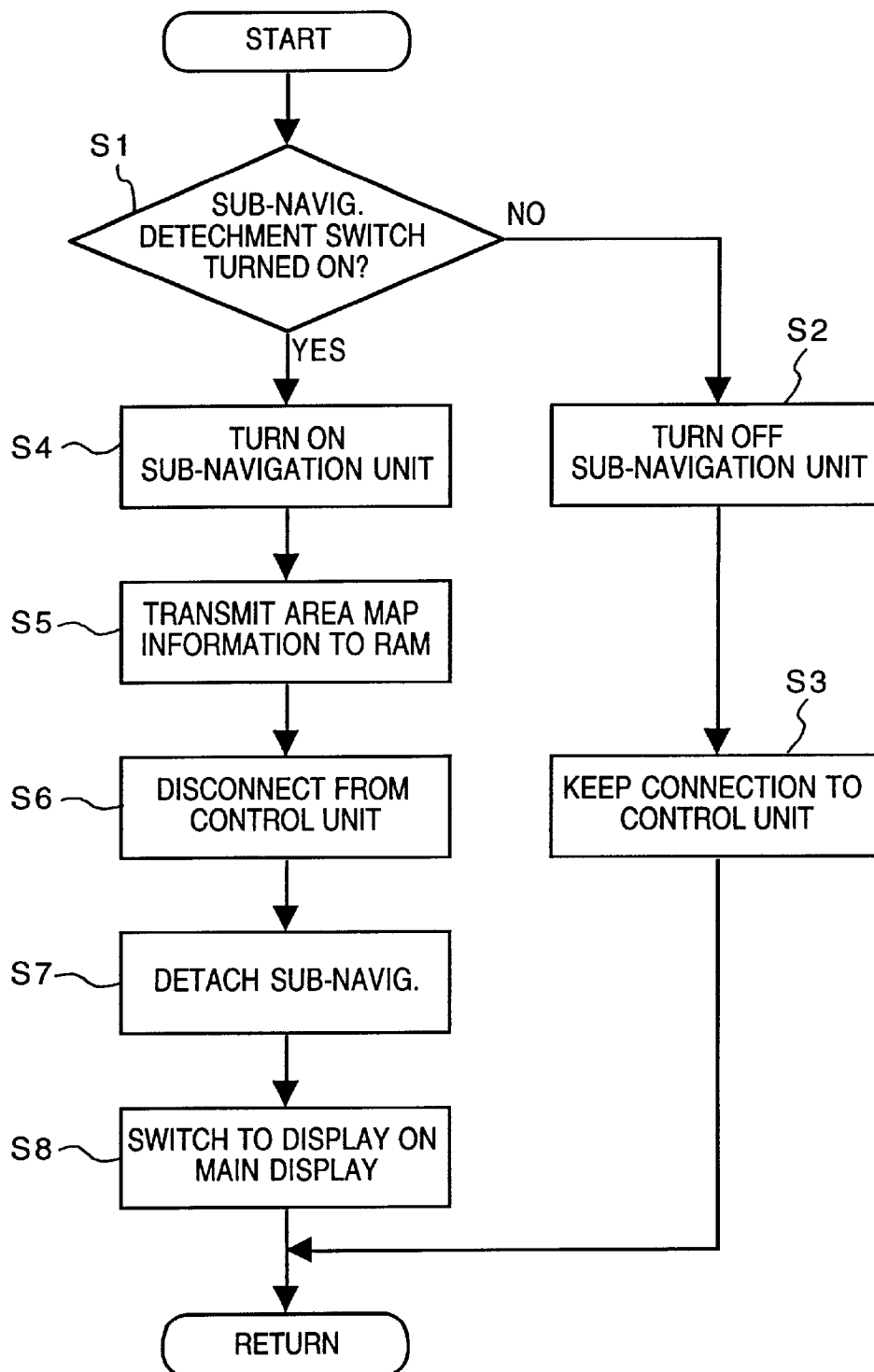
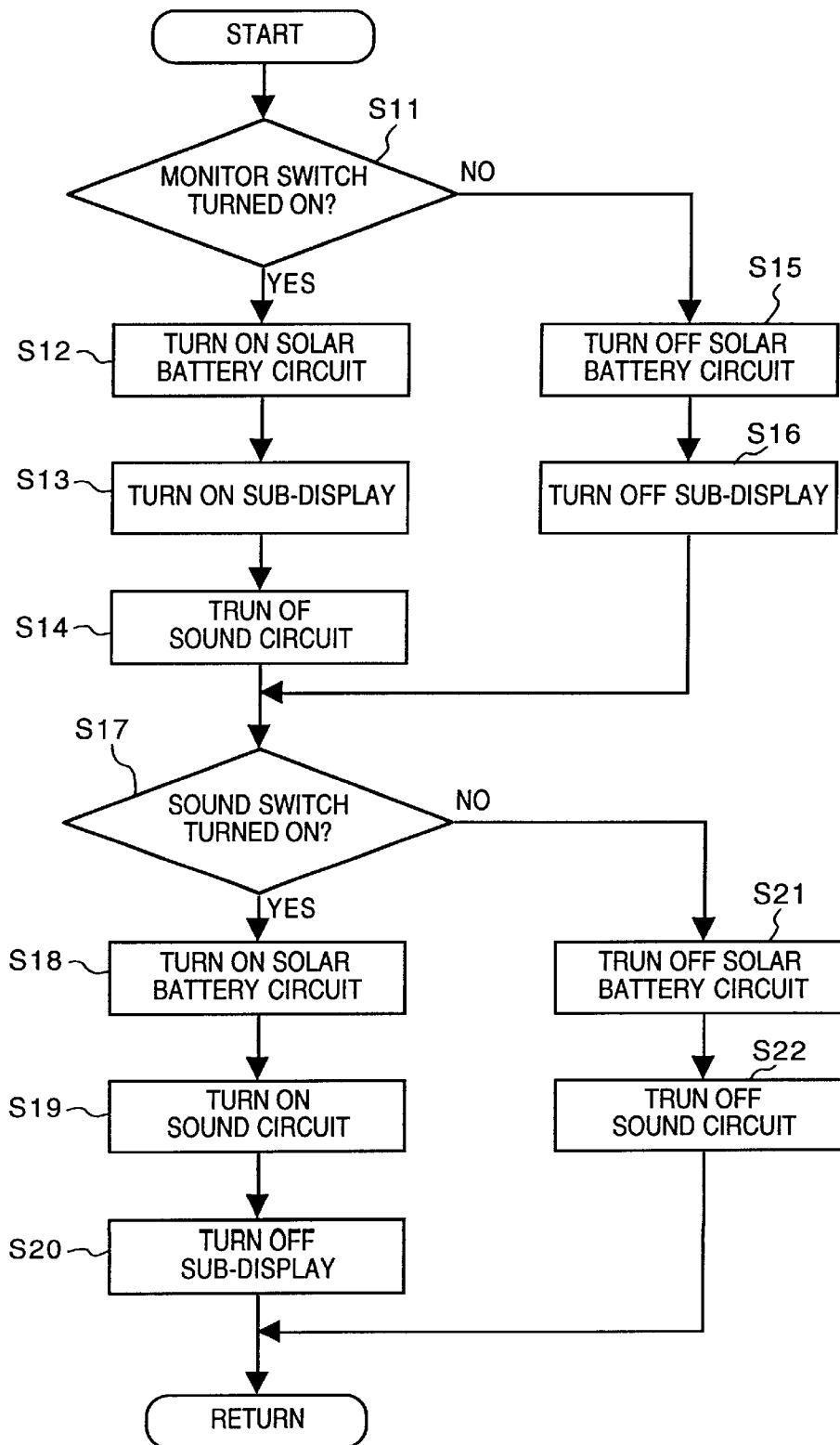
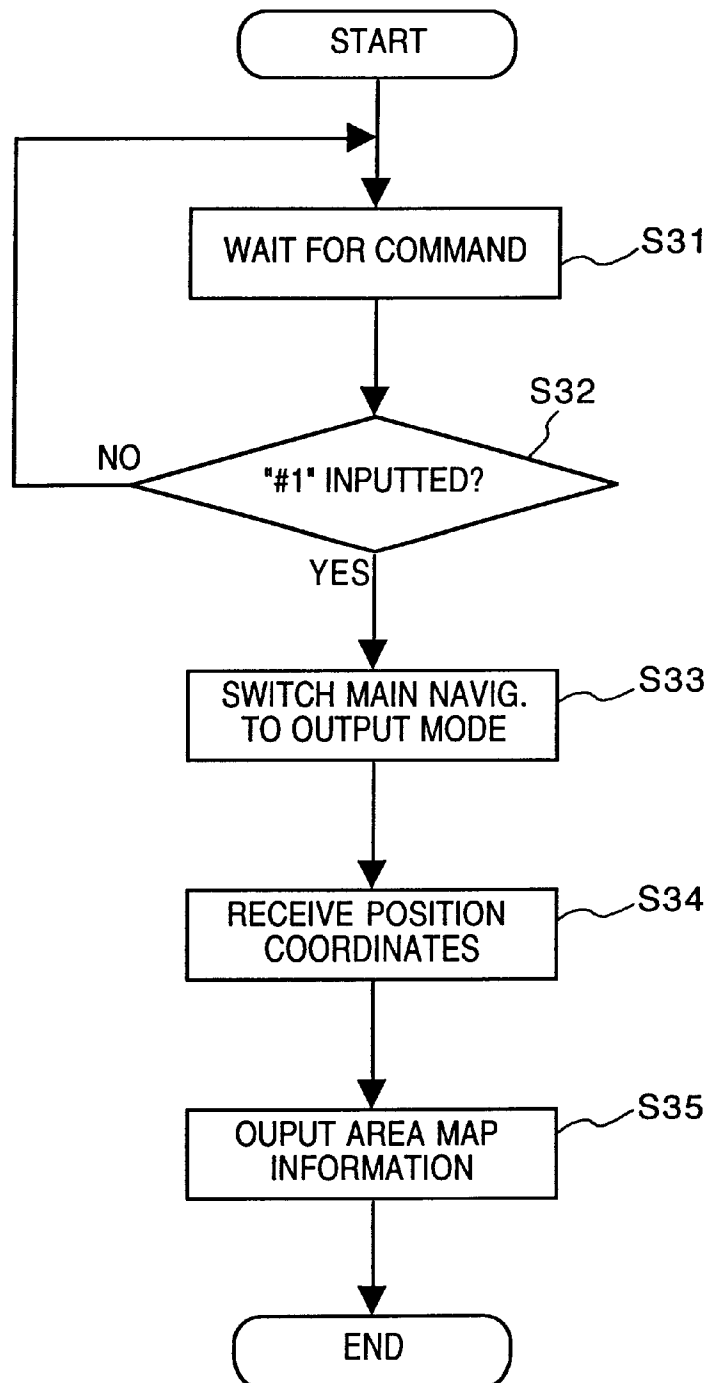


FIG. 1



**FIG. 2**

**FIG. 3**

**FIG. 4**

# Explore Litigation Insights

Docket Alarm provides insights to develop a more informed litigation strategy and the peace of mind of knowing you're on top of things.

## Real-Time Litigation Alerts



Keep your litigation team up-to-date with **real-time alerts** and advanced team management tools built for the enterprise, all while greatly reducing PACER spend.

Our comprehensive service means we can handle Federal, State, and Administrative courts across the country.

## Advanced Docket Research



With over 230 million records, Docket Alarm's cloud-native docket research platform finds what other services can't. Coverage includes Federal, State, plus PTAB, TTAB, ITC and NLRB decisions, all in one place.

Identify arguments that have been successful in the past with full text, pinpoint searching. Link to case law cited within any court document via Fastcase.

## Analytics At Your Fingertips



Learn what happened the last time a particular judge, opposing counsel or company faced cases similar to yours.

Advanced out-of-the-box PTAB and TTAB analytics are always at your fingertips.

## API

Docket Alarm offers a powerful API (application programming interface) to developers that want to integrate case filings into their apps.

## LAW FIRMS

Build custom dashboards for your attorneys and clients with live data direct from the court.

Automate many repetitive legal tasks like conflict checks, document management, and marketing.

## FINANCIAL INSTITUTIONS

Litigation and bankruptcy checks for companies and debtors.

## E-DISCOVERY AND LEGAL VENDORS

Sync your system to PACER to automate legal marketing.