



US007577910B1

(12) **United States Patent**
Husemann et al.

(10) **Patent No.:** **US 7,577,910 B1**
(45) **Date of Patent:** **Aug. 18, 2009**

(54) **METHOD AND APPARATUS FOR PROVIDING A MORE POWERFUL USER-INTERFACE TO DEVICE WITH A LIMITED USER-INTERFACE**

6,792,605 B1 * 9/2004 Roberts et al. 719/313

FOREIGN PATENT DOCUMENTS

JP	07-254920	10/1995
JP	10-162060	6/1998
JP	10-240833	9/1998
JP	11-027290	1/1999
JP	11-031114	2/1999
JP	11-161321	6/1999
JP	2002-509669	3/2002
WO	WO 95/28673	10/1995
WO	WO 98/59284	12/1998

(75) Inventors: **Dirk Husemann**, Adliswill (CH);
Michael Moser, Zurich (CH)

(73) Assignee: **International Business Machines Corporation**, Armonk, NY (US)

(*) Notice: Subject to any disclaimer, the term of this patent is extended or adjusted under 35 U.S.C. 154(b) by 1343 days.

(21) Appl. No.: **09/613,113**

(22) Filed: **Jul. 10, 2000**

(30) **Foreign Application Priority Data**

Jul. 12, 1999 (EP) 99113414

(51) **Int. Cl.**
G06F 3/00 (2006.01)

(52) **U.S. Cl.** **715/744; 715/745; 715/746; 715/747**

(58) **Field of Classification Search** **345/716, 345/719, 720, 721, 723, 730; 715/744-749**
See application file for complete search history.

(56) **References Cited**

U.S. PATENT DOCUMENTS

6,173,316	B1 *	1/2001	De Boor et al.	709/218
6,216,158	B1 *	4/2001	Luo et al.	709/217
6,446,096	B1 *	9/2002	Holland et al.	715/513
6,456,892	B1 *	9/2002	Dara-Abrams et al.	700/83
6,466,971	B1 *	10/2002	Humpleman et al.	709/220
6,502,000	B1 *	12/2002	Arnold et al.	700/83
6,509,913	B2 *	1/2003	Martin et al.	345/762
6,560,640	B2 *	5/2003	Smethers 709/219	

OTHER PUBLICATIONS

European Search Report, Application No. EP 99 111 3414, Mar. 21, 2000.
Jaap Haartsen, "Bluetooth—The universal radio interface for ad hoc, wireless connectivity", Ericsson Review No. 3, 1998.
Christer Erlandson and Per Ocklind, "WAP—The wireless application protocol", Ericsson Review No. 4, 1998.

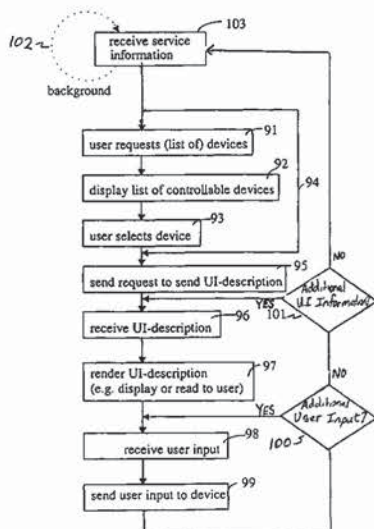
* cited by examiner

Primary Examiner—Ba Huynh
(74) *Attorney, Agent, or Firm*—Brian P. Verminski, Esq.

(57) **ABSTRACT**

A method and apparatus for controlling a computer device with a limited user-interface via a remote computer device having a more powerful user interface. Both computer devices are interconnected via a wireless communication channel and both computer devices support a common communications protocol. User-interface information is sent from the computer device with a limited user-interface to the remote computer device to provide a user-interface at the remote computer device for receiving user input at the remote computer device. The user input controls the computer device with a limited user-interface to execute commands therein corresponding to the user input.

26 Claims, 10 Drawing Sheets



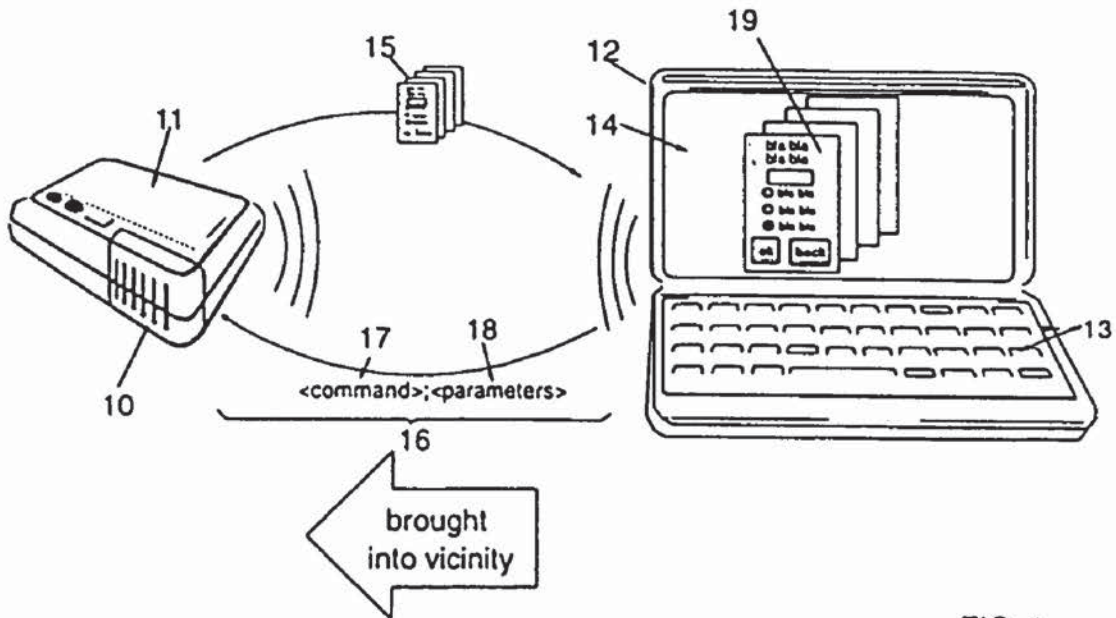


FIG. 1

/default-fonts		
	/draft	
		/style
		/size
	/letter-quality	
		/style
		/size
/interface		
	/serial	
		/baud-rate
		/parity
		...
	/parallel	
		...
/formats		
	/JCL	
		...
	/PostScript	
		...
...		

FIG. 2

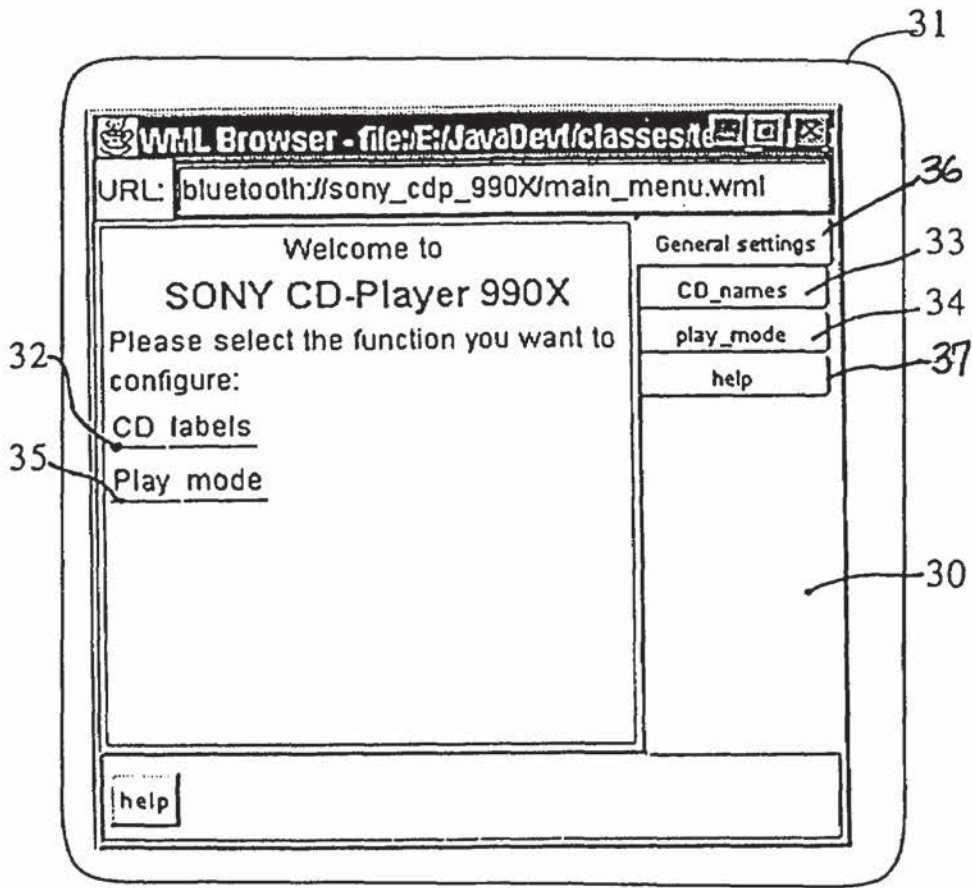


FIG. 3

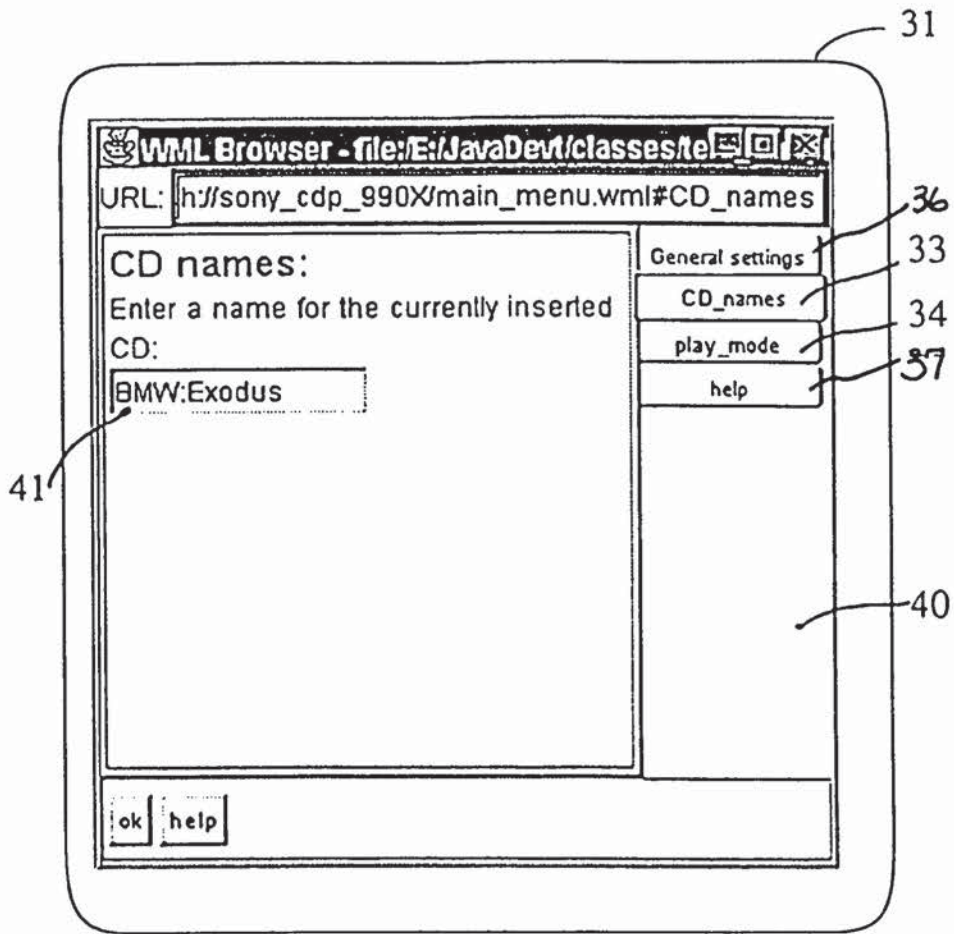


FIG. 4

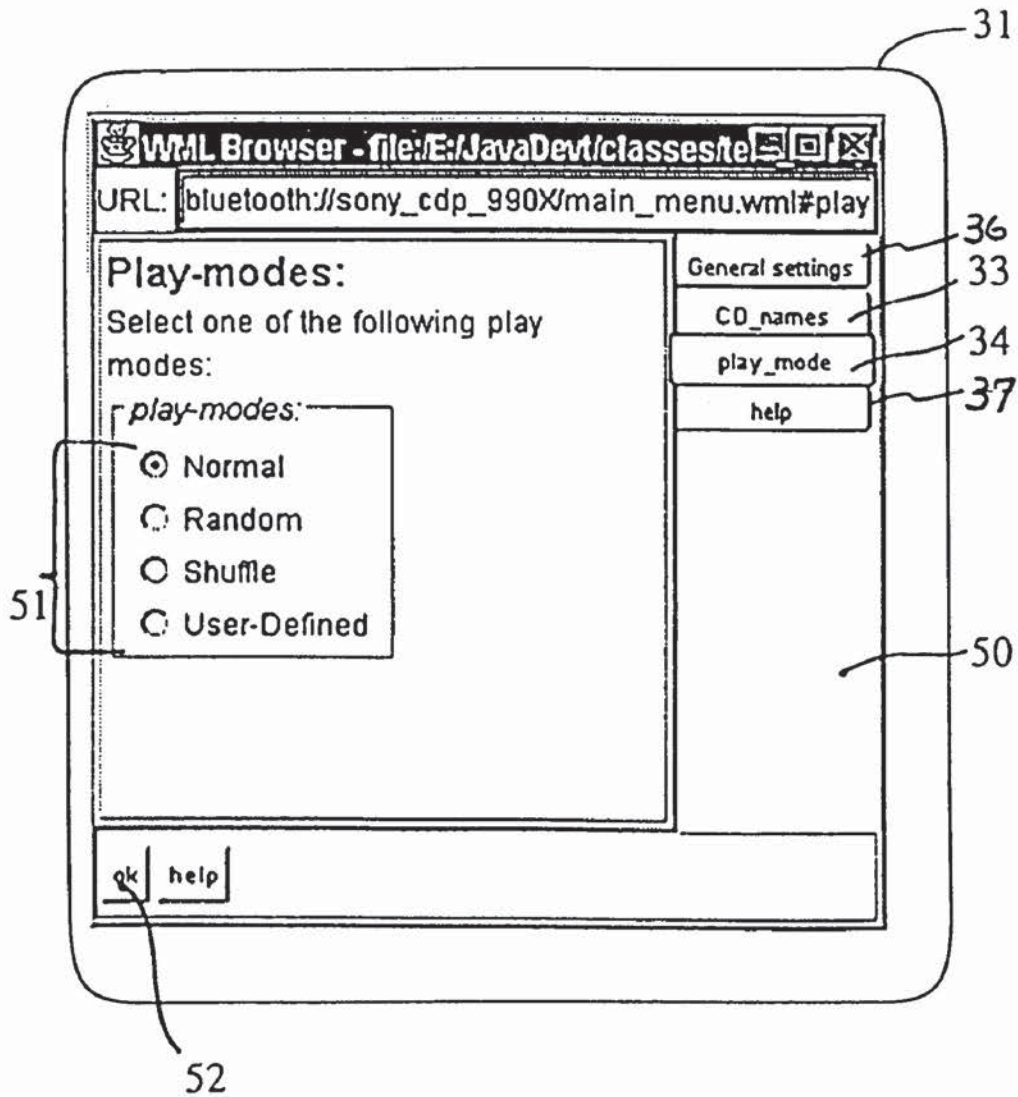


FIG. 5

Explore Litigation Insights

Docket Alarm provides insights to develop a more informed litigation strategy and the peace of mind of knowing you're on top of things.

Real-Time Litigation Alerts



Keep your litigation team up-to-date with **real-time alerts** and advanced team management tools built for the enterprise, all while greatly reducing PACER spend.

Our comprehensive service means we can handle Federal, State, and Administrative courts across the country.

Advanced Docket Research



With over 230 million records, Docket Alarm's cloud-native docket research platform finds what other services can't. Coverage includes Federal, State, plus PTAB, TTAB, ITC and NLRB decisions, all in one place.

Identify arguments that have been successful in the past with full text, pinpoint searching. Link to case law cited within any court document via Fastcase.

Analytics At Your Fingertips



Learn what happened the last time a particular judge, opposing counsel or company faced cases similar to yours.

Advanced out-of-the-box PTAB and TTAB analytics are always at your fingertips.

API

Docket Alarm offers a powerful API (application programming interface) to developers that want to integrate case filings into their apps.

LAW FIRMS

Build custom dashboards for your attorneys and clients with live data direct from the court.

Automate many repetitive legal tasks like conflict checks, document management, and marketing.

FINANCIAL INSTITUTIONS

Litigation and bankruptcy checks for companies and debtors.

E-DISCOVERY AND LEGAL VENDORS

Sync your system to PACER to automate legal marketing.