



[ABOUT US](#)

[OUR IMPACT](#)

[NEWS](#)

[TOOLS](#)

[CONTACT](#)

[DONATE](#)

# Our People

SKIP TO: [PROGRAMS](#) [OPERATIONS](#) [BOARD](#)

## Programs

Our team of lawyers, scientists, and health experts work to make sure medicines are affordable.



Tahir Amin

CO-FOUNDER  
CO-EXECUTIVE DIRECTOR



Priti Krishtel

CO-FOUNDER  
CO-EXECUTIVE DIRECTOR



Dan Ravicher

U.S. PATENT COUNSEL



Joe Fortunak

PHARMACEUTICAL SCIENTIST  
INNOVATOR

**BREAKING NEWS:** I-MAK Files Two Additional Patent Challenges on Sovaldi

SEARCH 



**Aaron Pattillo**

MARKET DYNAMICS

[ABOUT US](#)

[OUR IMPACT](#)

[NEWS](#)

[TOOLS](#)

[CONTACT](#)



**Martine Holston**

SCALING PARTNER

GROWTH ARCHITECT

[DONATE](#)



**Dana Gill**

EXTERNAL AFFAIRS



**This could be you!**

PATENT ATTORNEY

## Operations

Our team accelerates and amplifies I-MAK's work to increase global access to affordable, lifesaving medicines.



**Nini Hoang**

ADMINISTRATIVE ASSISTANT



**This could be you!**

DEVELOPMENT MANAGER



**Farzana Fakhry**

MANAGER, FINANCE AND ADMINISTRATION

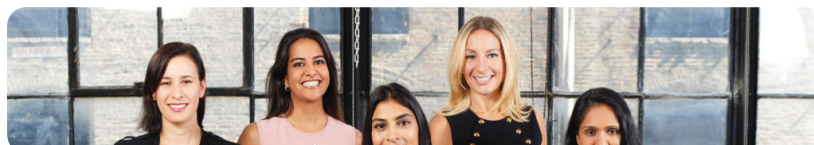


**This could be you!**

EXECUTIVE ASSISTANT

## Board

I-MAK's Board are leaders in equity, justice, and catalytic change.



BREAKING NEWS: I-MAK Files... Present Challenges of... vardi

SEARCH 



ABOUT US OUR IMPACT NEWS TOOLS CONTACT

DONATE



Renu Saini

LEADER IN CONSERVATION



Amanda Parsons,  
MBA, MD

HEALTH SYSTEMS EXPERT



Lara Galinsky

PURPOSE IN  
ENTREPRENEURSHIP



Reena Abraham

LEADER IN EDUCATION



Monica Mehta,  
PharmD, MPH

CLINICAL PHARMACY  
INFECTIOUS DISEASE EXPERT



Priti Krishtel

CO-FOUNDER  
CO-EXECUTIVE DIRECTOR



Tahir Amin

CO-FOUNDER  
CO-EXECUTIVE DIRECTOR



David Watson

EMERITUS

**BREAKING NEWS:** I-MAK Files Two Additional Patent Challenges on Sovaldi

SEARCH 



I-MAK and help make lifesaving

[ABOUT US](#) [OUR IMPACT](#) [NEWS](#) [TOOLS](#) [CONTACT](#)

DONATE

medicines accessible to all

Email

JOIN

**ABOUT US**

[Our Mission](#)

[Our People](#)

[Impact](#)

**NEWS**

[Resources](#)

**CASES**

**CONTACT**

[Donate](#)



Except for publications commissioned or published by third parties all content on this site is licensed under a [Creative Commons Attribution 3.0 License](#).