



- [54] UNIVERSAL DOCKING STATION
- [75] Inventors: **John A. Moroz**, Plymouth; **Gary A. Altenberg**, Buffalo; **James Ternus**, Maple Grove, all of Minn.
- [73] Assignee: **Electronics Accessory Specialists International, Inc.**, Scottsdale, Ariz.
- [21] Appl. No.: **08/679,131**
- [22] Filed: **Jul. 12, 1996**

**Related U.S. Application Data**

- [60] Provisional application No. 60/017,725, May 16, 1996.
- [51] Int. Cl.<sup>6</sup> ..... **G06F 13/00**
- [52] U.S. Cl. .... **710/101**; 361/683
- [58] Field of Search ..... 395/281, 552, 395/555; 364/708.1; 361/683-686

**References Cited**

**U.S. PATENT DOCUMENTS**

- 4,941,845 7/1990 Eppley et al. .
- 4,969,830 11/1990 Daly et al. .
- 5,187,645 2/1993 Spalding et al. .
- 5,373,149 12/1994 Rasmussen .
- 5,452,180 9/1995 Register et al. .
- 5,477,415 12/1995 Mitcham et al. .
- 5,632,020 5/1997 Gephardt et al. .... 395/283
- 5,634,080 5/1997 Kikinis et al. .... 395/893
- 5,724,529 3/1998 Smith et al. .... 395/309

**OTHER PUBLICATIONS**

- Don Anderson et al., *CardBus System Architecture*, 150-153, 194-201, 228-231; 322-325 (1995).
- Don Anderson, *PCMCIA System Architecture*, 16-Bit PC Cards, 2nd Edition, 146-167, 214-215, 218-225, 296-297 (1995).
- Brochure entitled "Card Station Expanding Your Portable World", Axonix Corporation (1994).

*Primary Examiner*—Glenn A. Auve  
*Attorney, Agent, or Firm*—Merchant, Gould, Smith, Edell, Welter & Schmidt, P.A.

[57] **ABSTRACT**

A universal docking station for coupling a portable computer to a plurality of peripheral devices via a PCMCIA interface is provided, wherein at least one of the peripheral devices is a user input device. The docking station comprises a PCMCIA interface adapted to be coupled to the portable computer, peripheral control units adapted to be coupled to the plurality of peripheral devices, and a docking station control unit coupled to the PCMCIA interface and the peripheral control units, wherein the docking station control unit selectively transfers data between the PCMCIA interface and one of the peripheral control units, and wherein the docking station control unit extends the period of time data written by the computer remains stable on the PCMCIA interface. A computer system including the universal docking station is also provided. A method for interfacing a standard peripheral device to a computer via a PCMCIA bus is also provided.

**5 Claims, 6 Drawing Sheets**

**IO Read with Wait State**

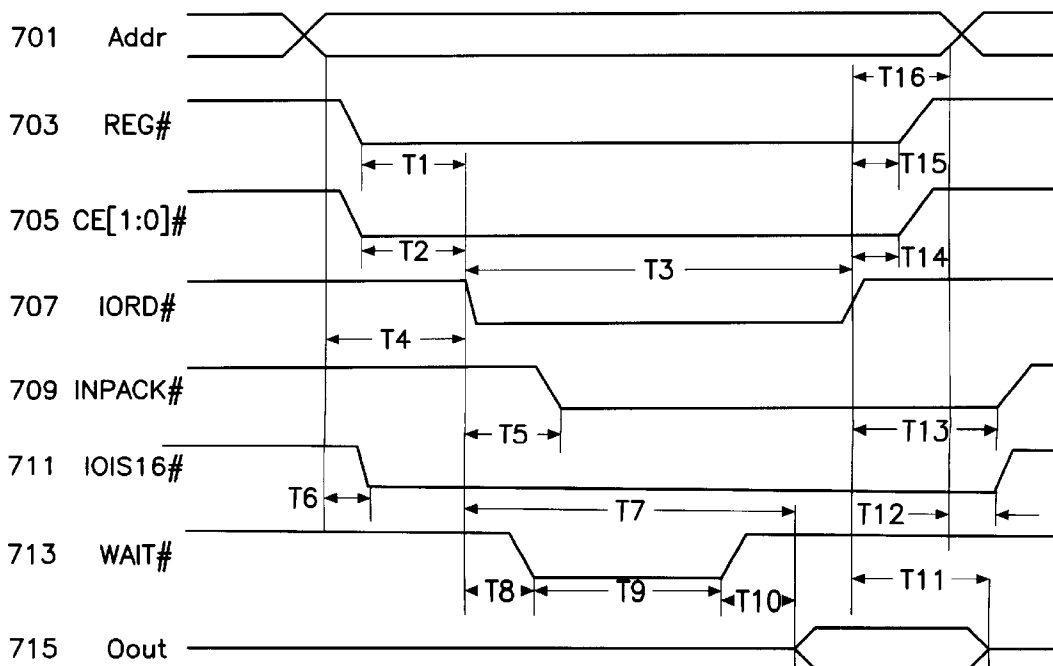
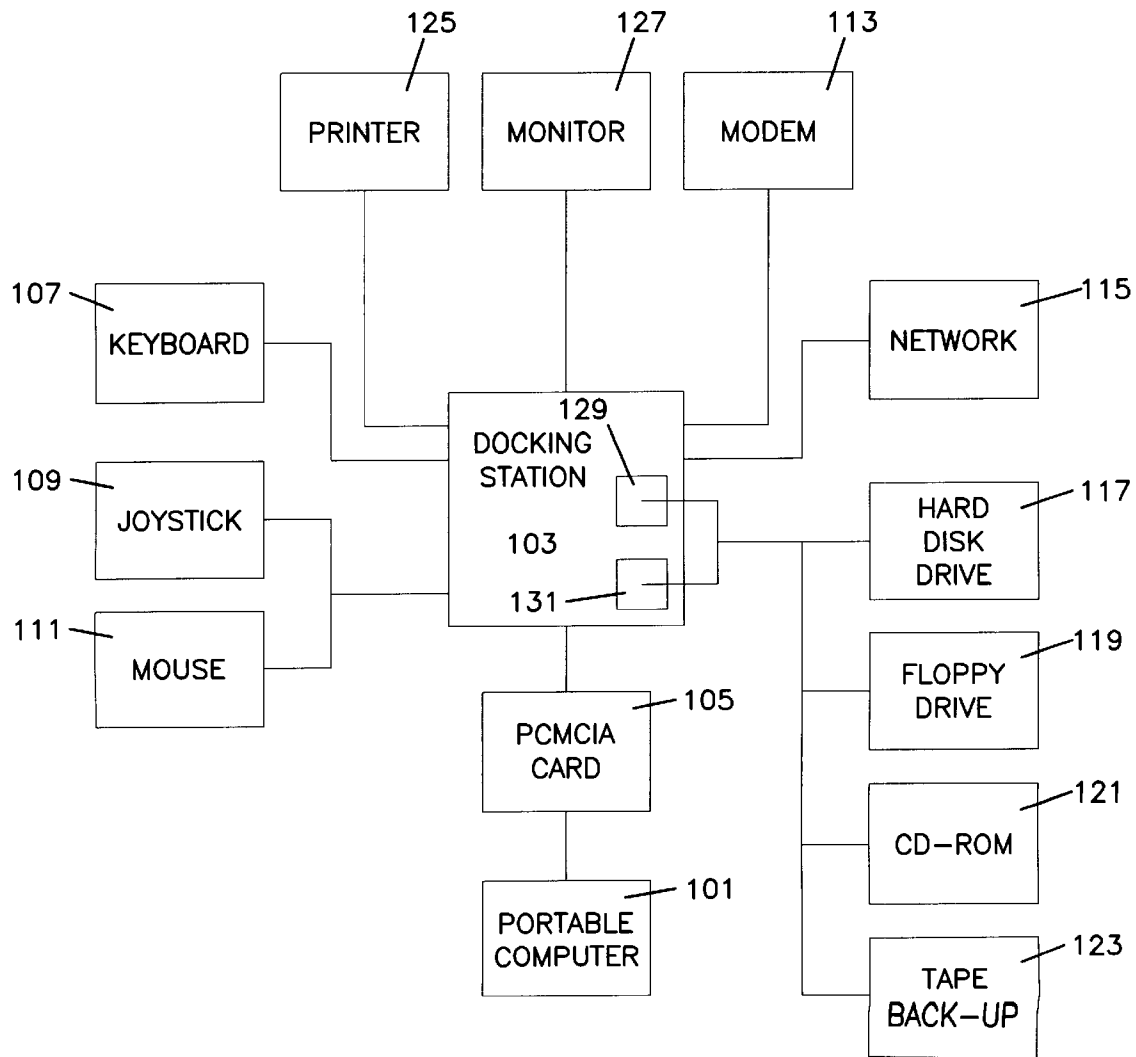


FIG. 1



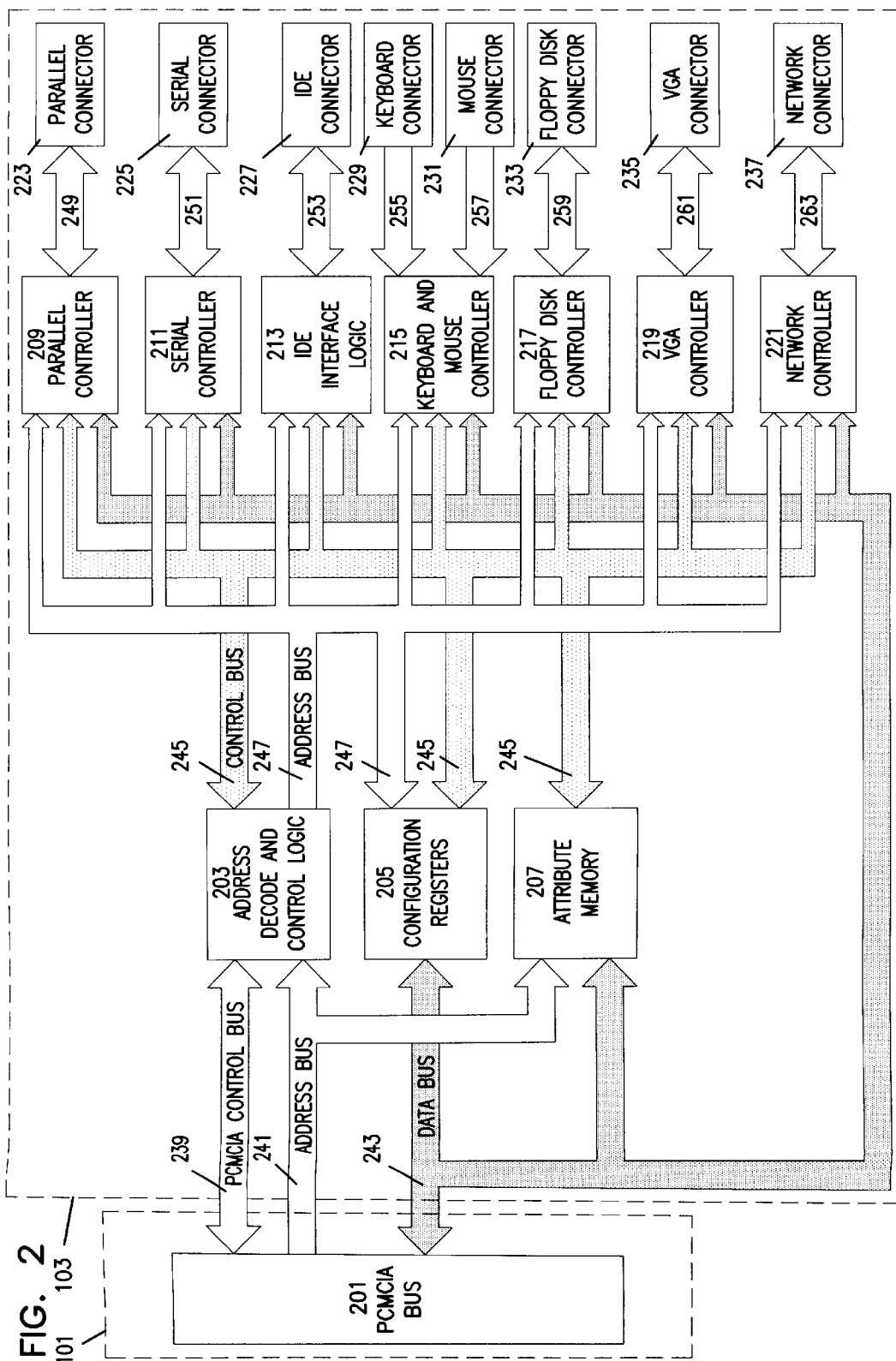


FIG. 2  
101 103

FIG. 3

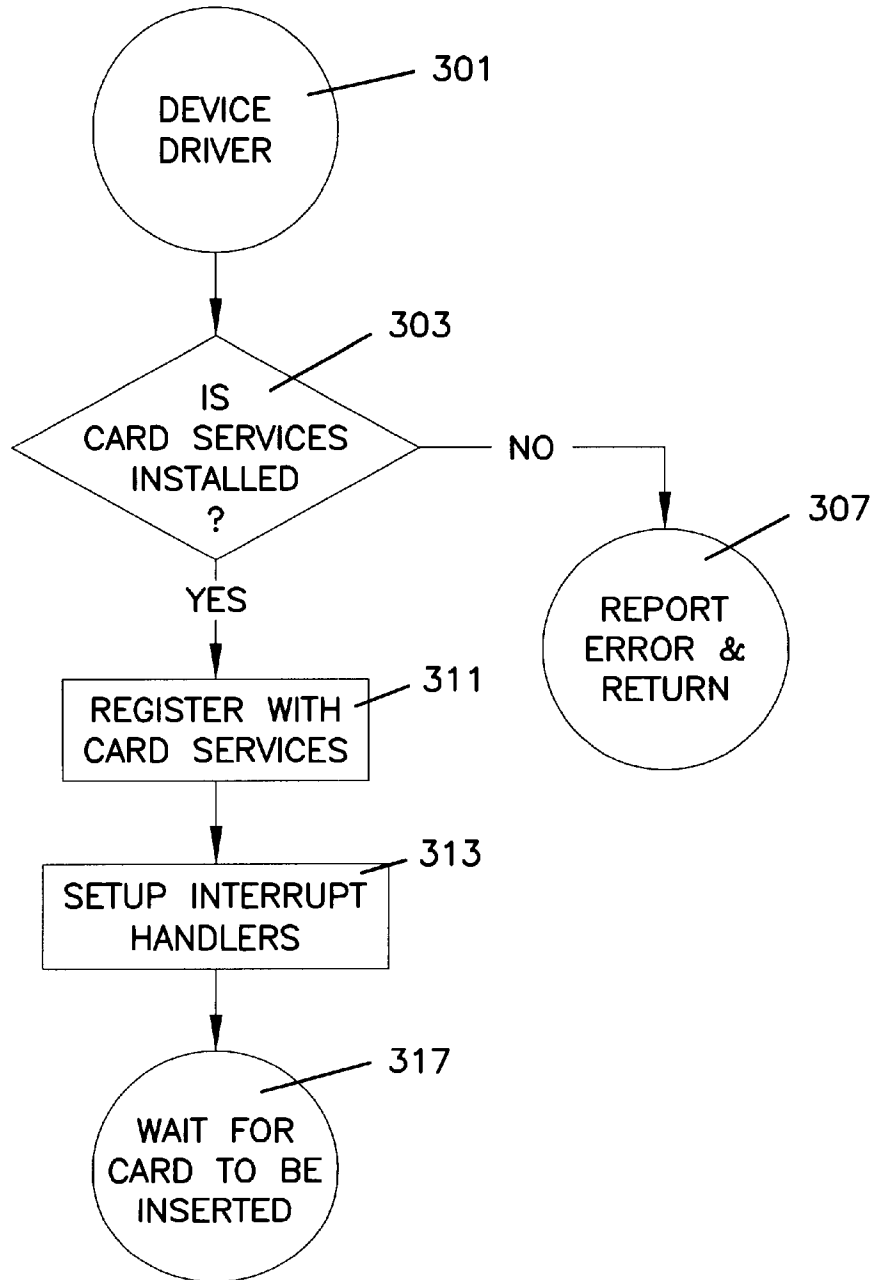
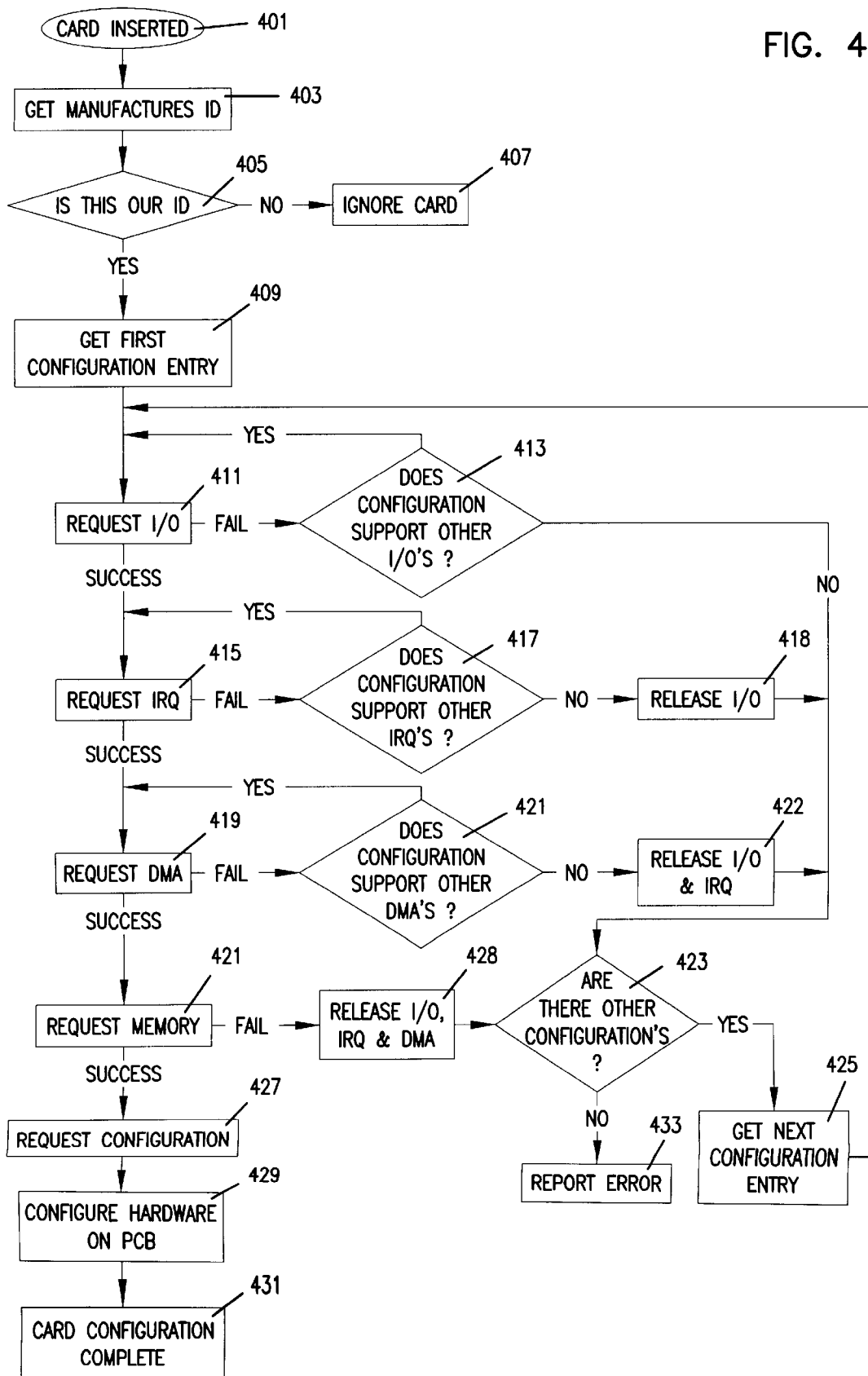


FIG. 4



# Explore Litigation Insights

Docket Alarm provides insights to develop a more informed litigation strategy and the peace of mind of knowing you're on top of things.

## Real-Time Litigation Alerts



Keep your litigation team up-to-date with **real-time alerts** and advanced team management tools built for the enterprise, all while greatly reducing PACER spend.

Our comprehensive service means we can handle Federal, State, and Administrative courts across the country.

## Advanced Docket Research



With over 230 million records, Docket Alarm's cloud-native docket research platform finds what other services can't. Coverage includes Federal, State, plus PTAB, TTAB, ITC and NLRB decisions, all in one place.

Identify arguments that have been successful in the past with full text, pinpoint searching. Link to case law cited within any court document via Fastcase.

## Analytics At Your Fingertips



Learn what happened the last time a particular judge, opposing counsel or company faced cases similar to yours.

Advanced out-of-the-box PTAB and TTAB analytics are always at your fingertips.

## API

Docket Alarm offers a powerful API (application programming interface) to developers that want to integrate case filings into their apps.

## LAW FIRMS

Build custom dashboards for your attorneys and clients with live data direct from the court.

Automate many repetitive legal tasks like conflict checks, document management, and marketing.

## FINANCIAL INSTITUTIONS

Litigation and bankruptcy checks for companies and debtors.

## E-DISCOVERY AND LEGAL VENDORS

Sync your system to PACER to automate legal marketing.