

(12) **United States Patent**
Meier et al.

(10) **Patent No.:** **US 8,464,299 B1**
(45) **Date of Patent:** **Jun. 11, 2013**

(54) **RESOURCE CONSERVATION FOR PACKET TELEVISION SERVICES**

(75) Inventors: **Rolf G. Meier**, Carp (CA); **Tim J. Rahrer**, Ottawa (CA)

(73) Assignee: **Rockstar Consortium US LP**, Plano, TX (US)

(*) Notice: Subject to any disclaimer, the term of this patent is extended or adjusted under 35 U.S.C. 154(b) by 2212 days.

(21) Appl. No.: **11/280,615**

(22) Filed: **Nov. 16, 2005**

Related U.S. Application Data

(60) Provisional application No. 60/628,577, filed on Nov. 17, 2004, provisional application No. 60/628,625, filed on Nov. 17, 2004.

(51) **Int. Cl.**
G06F 15/16 (2006.01)

(52) **U.S. Cl.**
USPC **725/95; 725/96**

(58) **Field of Classification Search**
USPC 725/58, 124, 125, 86-104
See application file for complete search history.

(56) **References Cited**

U.S. PATENT DOCUMENTS

2002/0174437	A1*	11/2002	Mano et al.	725/95
2003/0097659	A1*	5/2003	Goldman	725/89
2003/0206719	A1*	11/2003	Bumgardner et al.	386/83
2006/0064729	A1*	3/2006	Steading	725/95

* cited by examiner

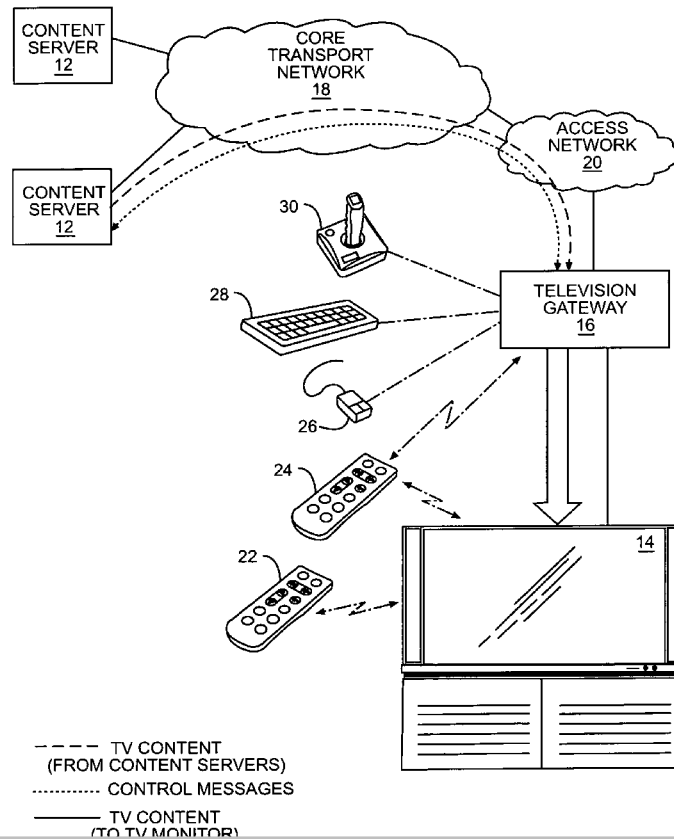
Primary Examiner — Sam Bhattacharya

(74) *Attorney, Agent, or Firm* — Withrow & Terranova, PLLC

(57) **ABSTRACT**

The present invention controls delivery of television content to conserve network resources based on whether the television content is being viewed on a television monitor. A television gateway may monitor a viewer's interactions with the television gateway to determine whether the television content is being viewed at the associated television monitor, or detect whether the television monitor is on or off. Upon determining that the viewer is not viewing the television content, various actions can be taken to conserve network resources.

22 Claims, 5 Drawing Sheets



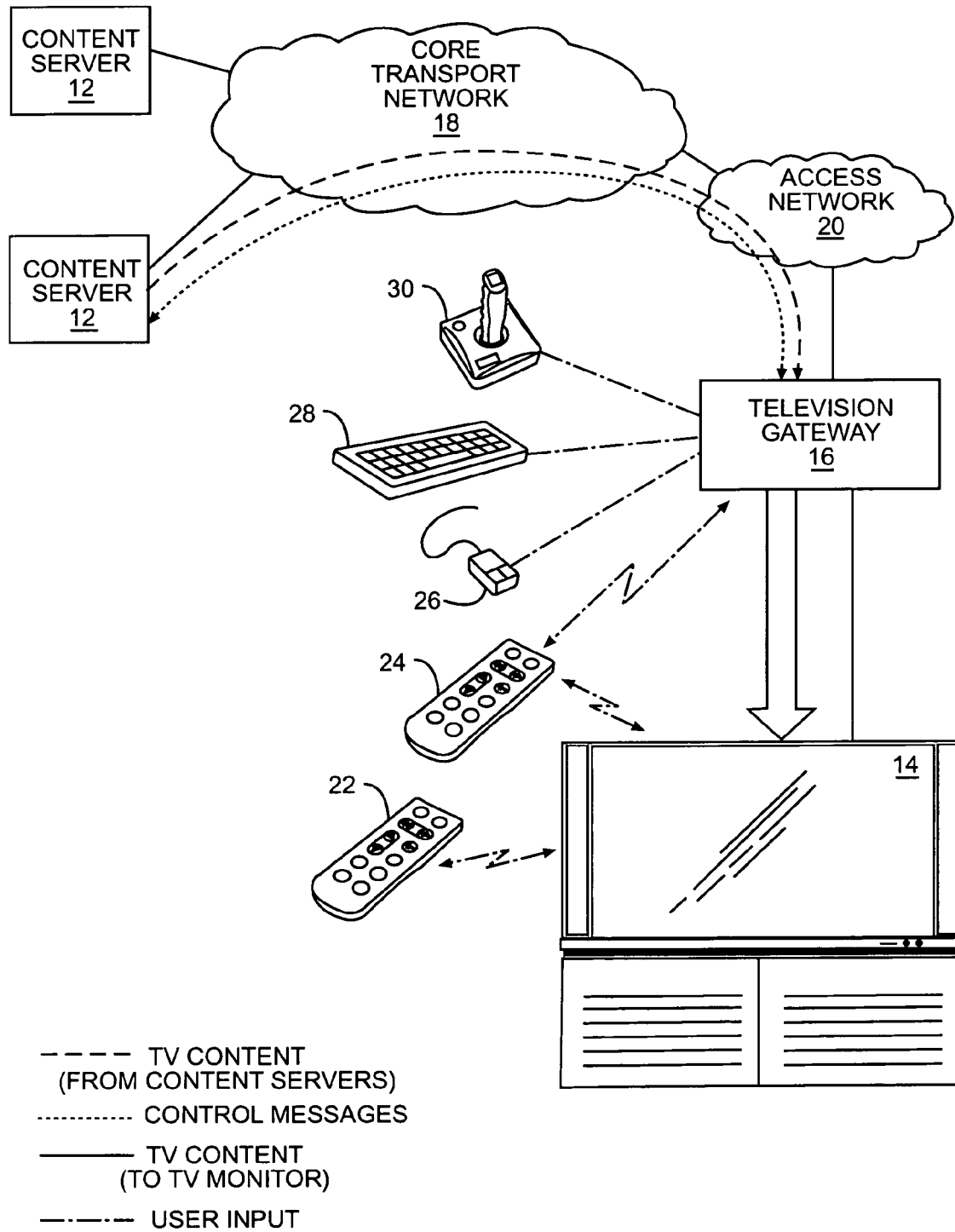


FIG. 1

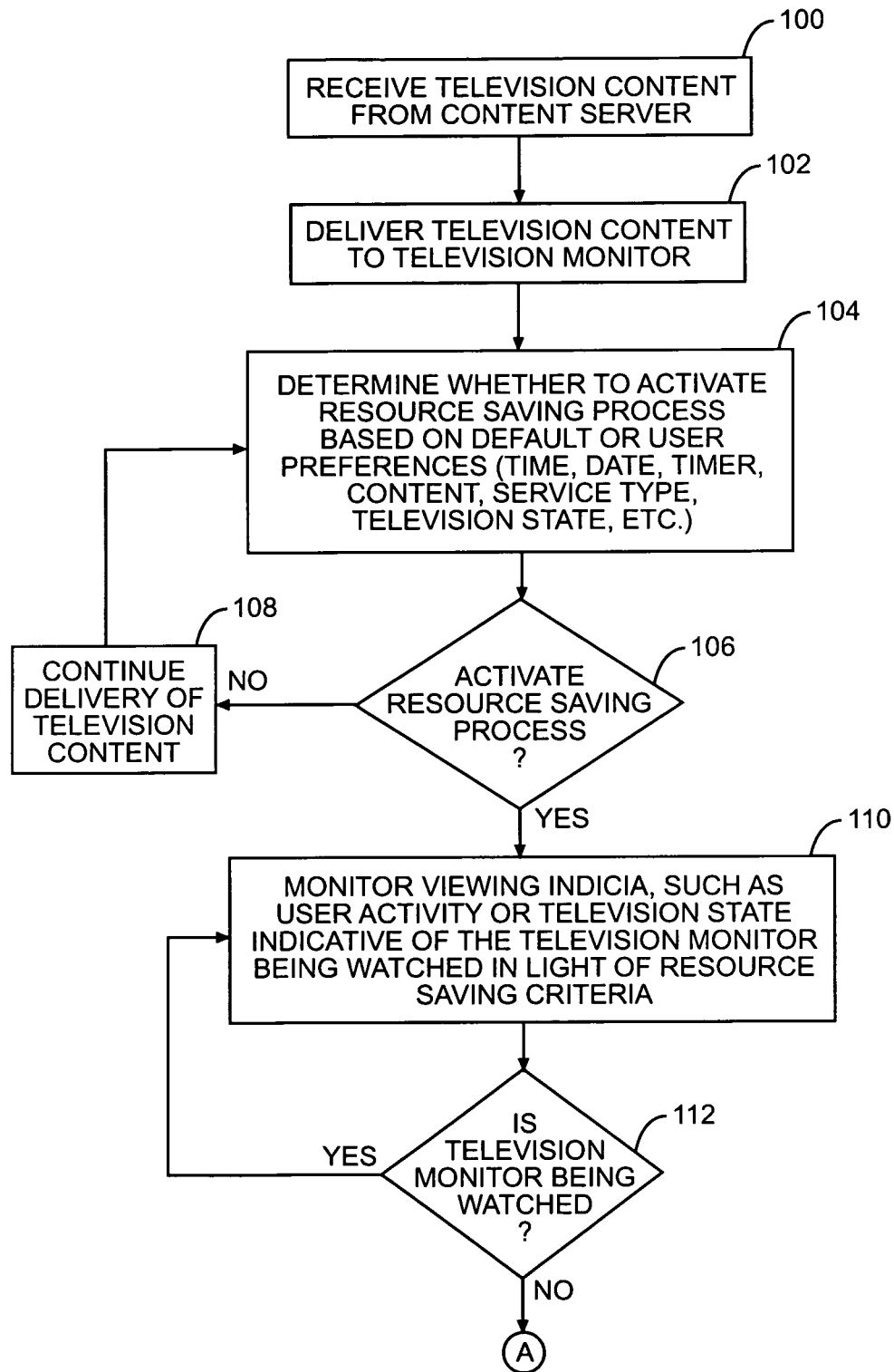


FIG. 2A

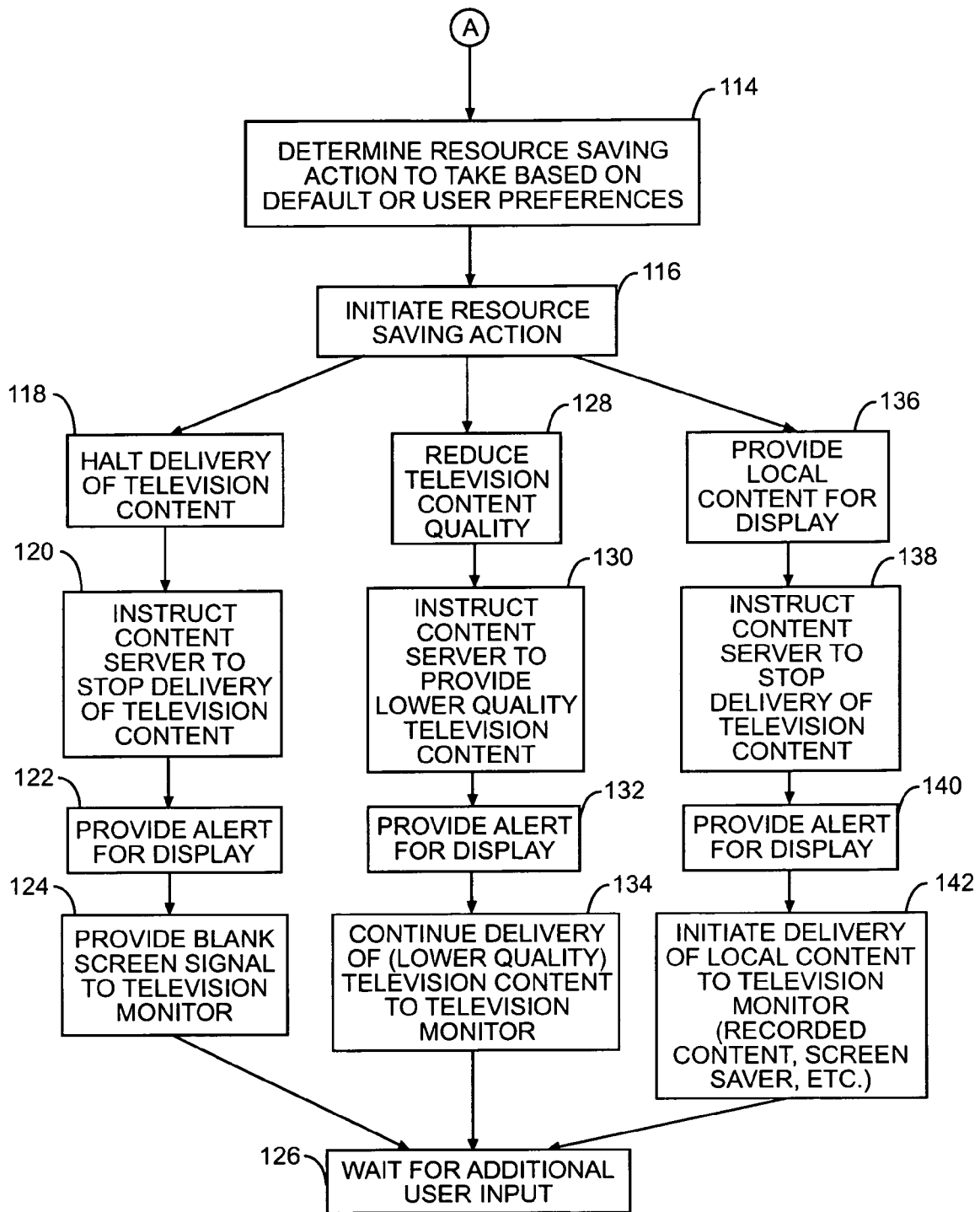


FIG. 2B

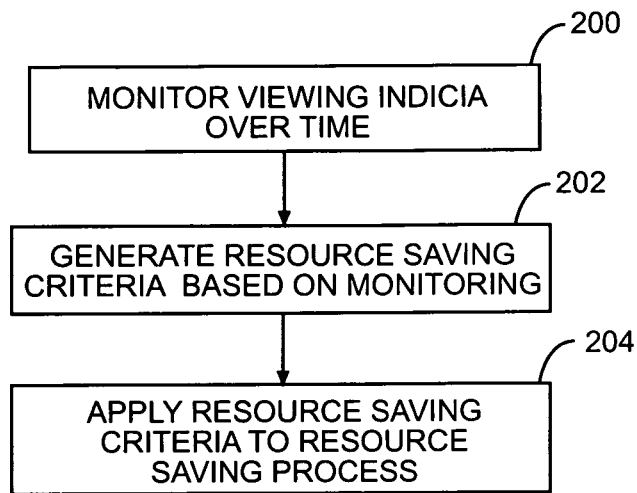


FIG. 3

Explore Litigation Insights

Docket Alarm provides insights to develop a more informed litigation strategy and the peace of mind of knowing you're on top of things.

Real-Time Litigation Alerts



Keep your litigation team up-to-date with **real-time alerts** and advanced team management tools built for the enterprise, all while greatly reducing PACER spend.

Our comprehensive service means we can handle Federal, State, and Administrative courts across the country.

Advanced Docket Research



With over 230 million records, Docket Alarm's cloud-native docket research platform finds what other services can't. Coverage includes Federal, State, plus PTAB, TTAB, ITC and NLRB decisions, all in one place.

Identify arguments that have been successful in the past with full text, pinpoint searching. Link to case law cited within any court document via Fastcase.

Analytics At Your Fingertips



Learn what happened the last time a particular judge, opposing counsel or company faced cases similar to yours.

Advanced out-of-the-box PTAB and TTAB analytics are always at your fingertips.

API

Docket Alarm offers a powerful API (application programming interface) to developers that want to integrate case filings into their apps.

LAW FIRMS

Build custom dashboards for your attorneys and clients with live data direct from the court.

Automate many repetitive legal tasks like conflict checks, document management, and marketing.

FINANCIAL INSTITUTIONS

Litigation and bankruptcy checks for companies and debtors.

E-DISCOVERY AND LEGAL VENDORS

Sync your system to PACER to automate legal marketing.