

[54] METHOD AND APPARATUS FOR PERSONAL VERIFICATION UTILIZING NONPREDICTABLE CODES AND BIOCHARACTERISTICS

[76] Inventor: Kenneth P. Weiss, 7 Park Ave., Newton, Mass. 02150

[21] Appl. No.: 298,039

[22] Filed: Jan. 18, 1989

(List continued on next page.)

Related U.S. Application Data

[63] Continuation-in-part of Ser. No. 802,579, Nov. 27, 1985, Pat. No. 4,885,778, which is a continuation-in-part of Ser. No. 676,626, Nov. 30, 1984, Pat. No. 4,720,860.

[51] Int. Cl.⁵ H04K 1/02; H04L 9/20; G07F 7/08

[52] U.S. Cl. 380/23; 380/25; 380/28; 340/825.31; 340/825.34; 235/380; 235/382

[58] Field of Search 340/825.31, 825.34; 380/3-5, 23-25, 28; 364/200, 900; 235/379, 380, 382

[56] References Cited

U.S. PATENT DOCUMENTS

3,752,904	8/1973	Waterbury	380/24 X
3,764,742	10/1973	Abbott et al.	380/23
3,806,874	4/1974	Ehrat	380/23
3,886,451	5/1975	Chu et al.	368/118
3,900,867	8/1975	Wagner	342/45
3,995,111	11/1976	Tsuji et al.	375/109
4,104,694	8/1978	Hargrove	361/172
4,126,761	11/1978	Graupe et al.	380/28
4,145,568	3/1979	Ehrat	380/47
4,145,569	3/1979	Ehrat	380/48
4,185,166	1/1980	Kinch, Jr. et al.	380/43
4,193,073	3/1980	Kohnen	342/56
4,277,837	7/1981	Stuckert	364/900
4,295,039	10/1981	Stuckert	235/380
4,302,810	11/1981	Bouricius et al.	380/24
4,320,387	3/1982	Powell	340/825.34
4,326,098	4/1982	Bouricius et al.	380/25
4,403,114	9/1983	Sakoe	381/42
4,471,216	9/1984	Herve	235/380
4,494,211	1/1985	Schwartz	375/107

of the generated nonpredictable code to an indication of the character which includes the biocharacteristic; and, a mechanism for comparing the communicated characters including biocharacteristics with the character indications including biocharacteristic, and a mechanism for indicating verification if the compared characters, including the biocharacteristic, match in a predetermined way.

11 Claims, 6 Drawing Sheets

FOREIGN PATENT DOCUMENTS

0010496	4/1980	European Pat. Off.
0140013	5/1985	European Pat. Off.

OTHER PUBLICATIONS

V. McLellan, "The Future of Data Security Looks Credit-Card Thin", *Information Week*, (10/07/85, pp. 24-30).

"Voice ID Knows Who, What, and Where", *Electronic Design*, (10/02/86, p. 12).

Voice Key: *Voice Verification Systems for Access Control*, (Ecco Industries Inc., Danvers, Mass., 1986).

IBM Tech. Discl. Bull., (vol. 26, No. 7A, 12/83, pp. 3292-3293).

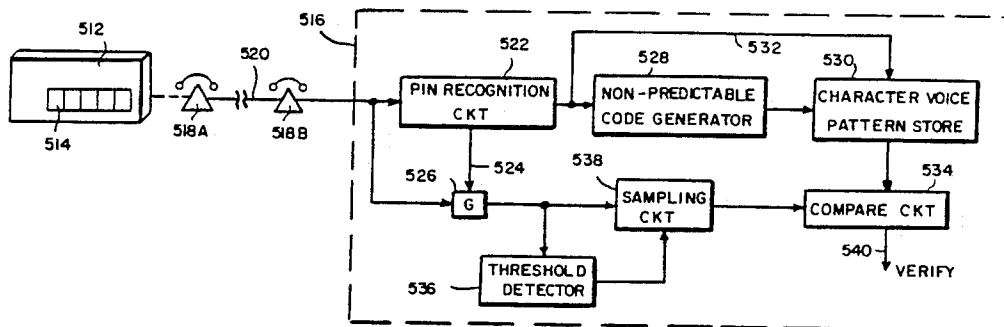
Primary Examiner—Stephen C. Buczinski

Assistant Examiner—Bernarr Earl Gregory

Attorney, Agent, or Firm—M. Lawrence Oliverio

[57] ABSTRACT

A personal verification system comprising a user device which is adapted to generate a time varying, multi-character, nonpredictable code; a verification device; a mechanism for permitting the user to communicate the nonpredictable code generated by the user device at a given time to the verification device in a manner such that a biocharacteristic of the user is communicated with each code character; the verification device including a mechanism for generating the same nonpredictable code as is appearing at the user device at the given time, a mechanism for converting each character



U.S. PATENT DOCUMENTS

4,536,647	8/1985	Atalla et al.	380/24	4,599,489	7/1986	Cargile	380/4
4,543,657	9/1985	Wilkinson	375/1	4,609,777	9/1986	Cargile	380/4
4,543,657	9/1985	Wilkinson	375/1	4,636,583	1/1987	Bidell et al.	380/48
4,575,621	3/1986	Dreifus	380/23 X	4,641,322	2/1987	Hasegawa	375/1
4,578,530	3/1986	Zeidler	380/24	4,677,552	6/1987	Sibley, Jr.	364/900 X
4,582,434	4/1986	Plangger et al.	368/46	4,677,617	6/1987	O'Connor et al.	370/100
4,582,985	4/1986	Löfberg	235/380	4,685,055	8/1987	Thomas	364/200
4,589,066	5/1986	Lam et al.	364/200	4,742,537	5/1988	Jesurum	379/351
				4,825,050	4/1989	Griffith et al.	235/379

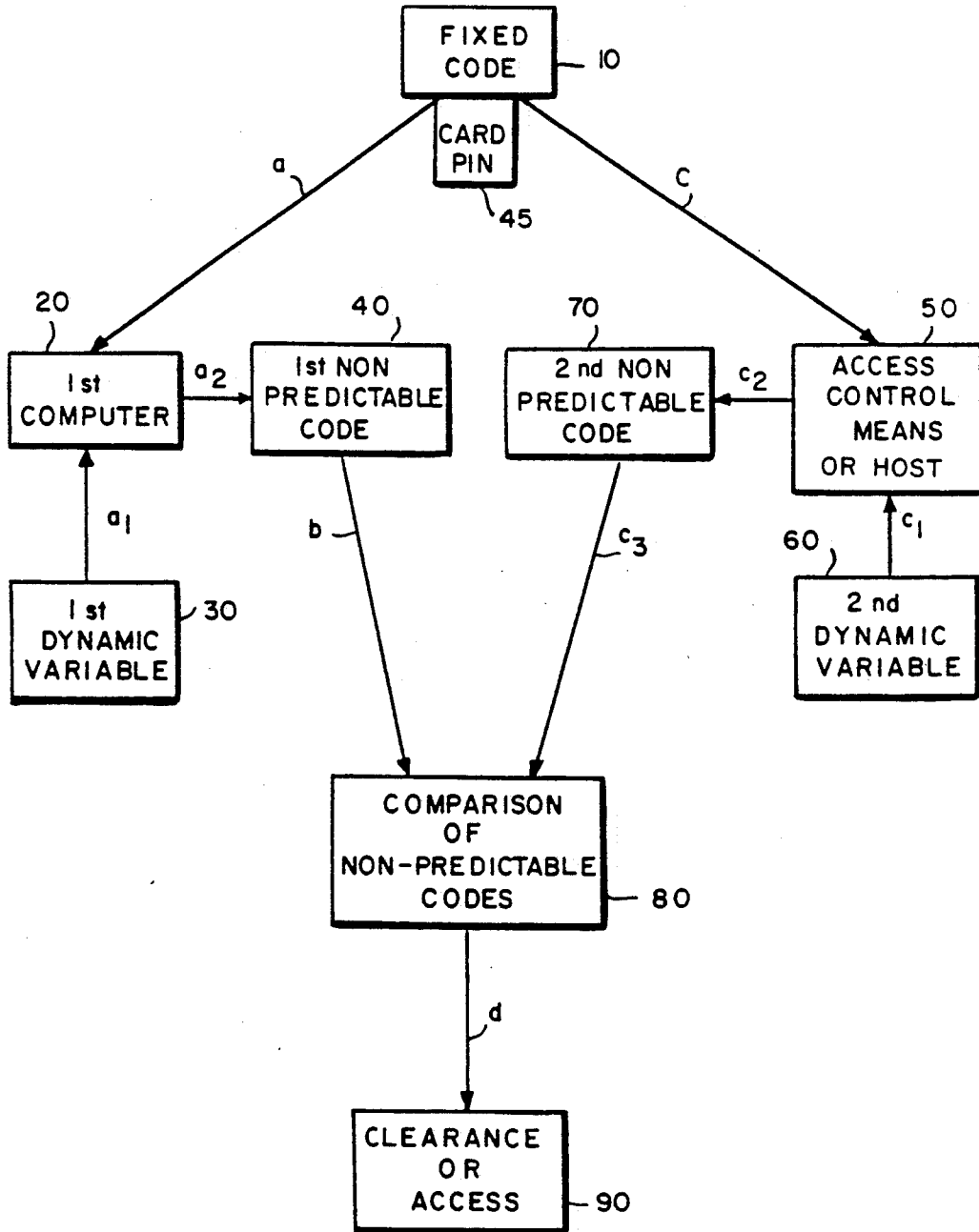


FIG. 1

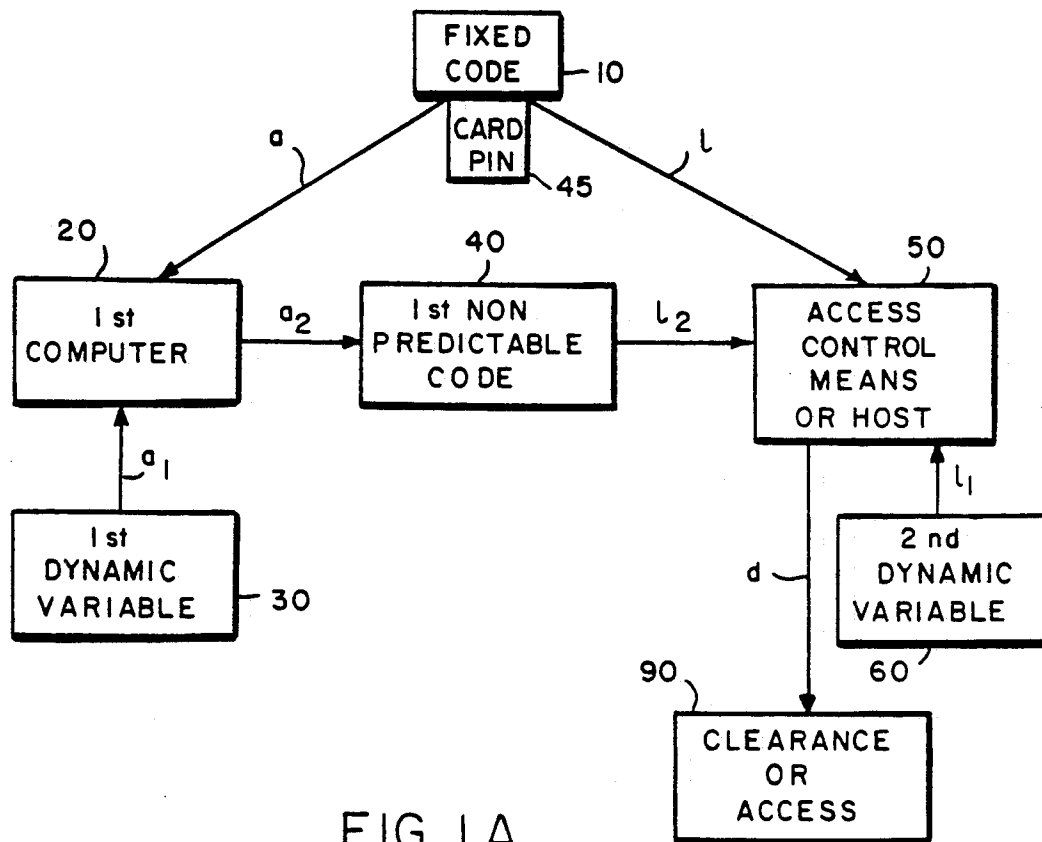


FIG. 1A

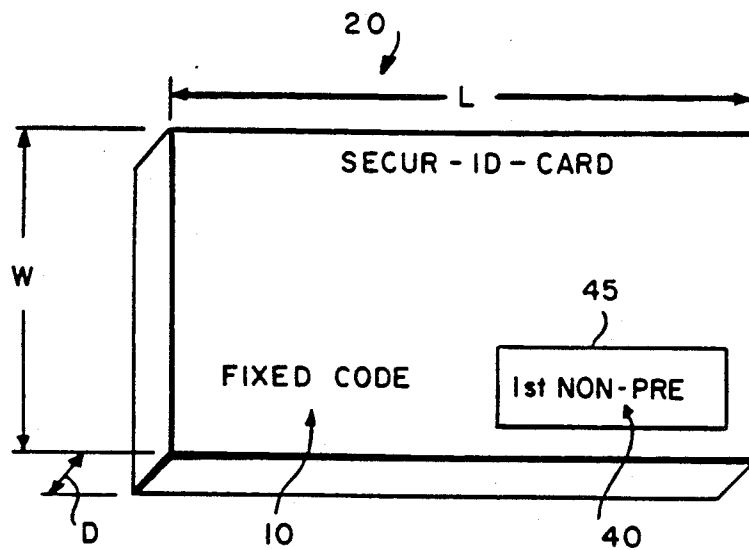


FIG. 2

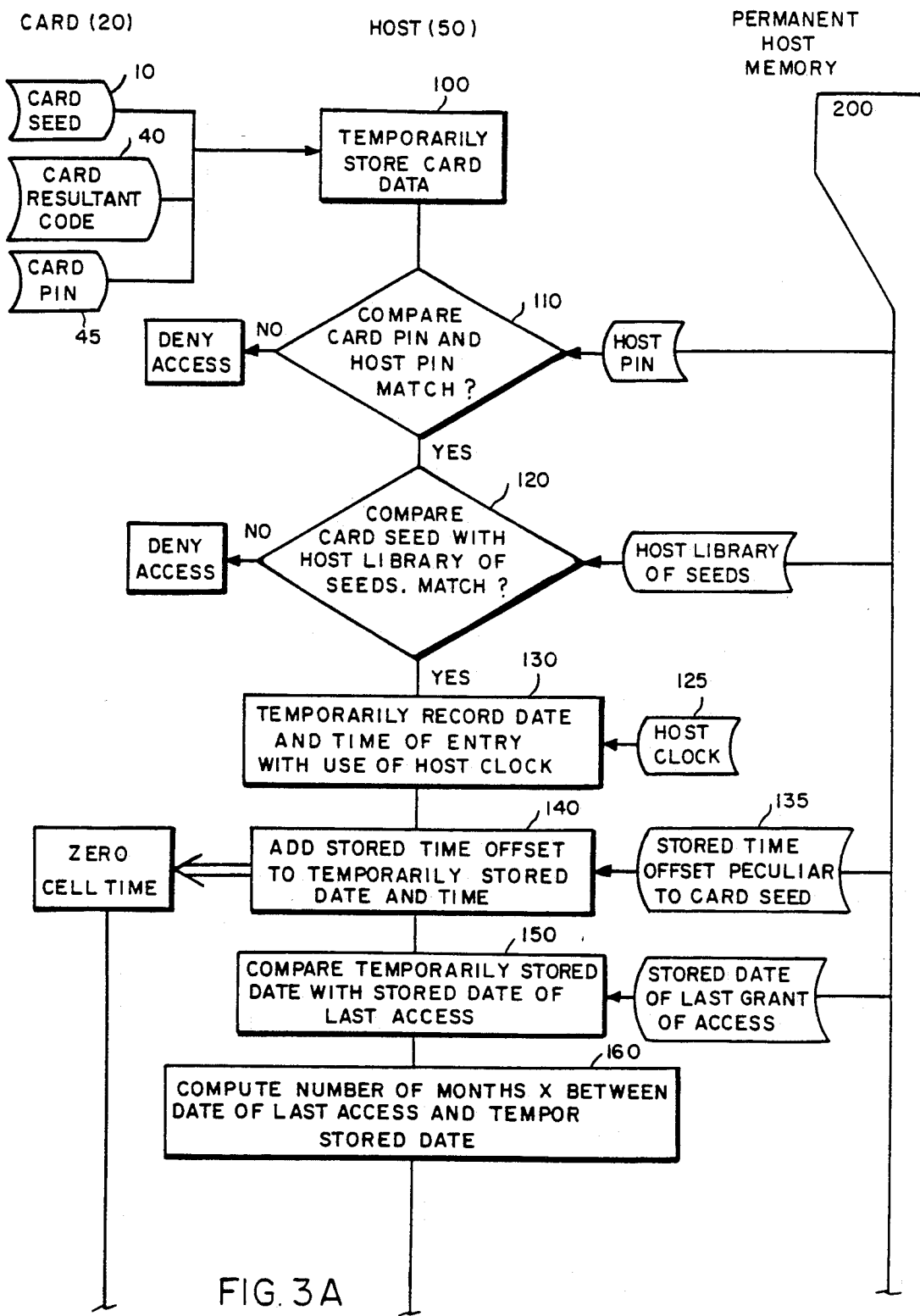


FIG. 3A

Explore Litigation Insights

Docket Alarm provides insights to develop a more informed litigation strategy and the peace of mind of knowing you're on top of things.

Real-Time Litigation Alerts



Keep your litigation team up-to-date with **real-time alerts** and advanced team management tools built for the enterprise, all while greatly reducing PACER spend.

Our comprehensive service means we can handle Federal, State, and Administrative courts across the country.

Advanced Docket Research



With over 230 million records, Docket Alarm's cloud-native docket research platform finds what other services can't. Coverage includes Federal, State, plus PTAB, TTAB, ITC and NLRB decisions, all in one place.

Identify arguments that have been successful in the past with full text, pinpoint searching. Link to case law cited within any court document via Fastcase.

Analytics At Your Fingertips



Learn what happened the last time a particular judge, opposing counsel or company faced cases similar to yours.

Advanced out-of-the-box PTAB and TTAB analytics are always at your fingertips.

API

Docket Alarm offers a powerful API (application programming interface) to developers that want to integrate case filings into their apps.

LAW FIRMS

Build custom dashboards for your attorneys and clients with live data direct from the court.

Automate many repetitive legal tasks like conflict checks, document management, and marketing.

FINANCIAL INSTITUTIONS

Litigation and bankruptcy checks for companies and debtors.

E-DISCOVERY AND LEGAL VENDORS

Sync your system to PACER to automate legal marketing.