

[54] BRIGHTNESS CONTROL CIRCUIT FOR LED DISPLAYS

[75] Inventor: Charles F. Fisler, New Hartford, N.Y.

[73] Assignee: General Electric Company, Syracuse, N.Y.

[21] Appl. No.: 688,474

[22] Filed: May 20, 1976

[51] Int. Cl.<sup>2</sup> ..... G09B 13/00; H05B 39/00; H05B 41/00

[52] U.S. Cl. .... 340/335; 340/340; 340/324 R; 315/169 TV

[58] Field of Search ..... 315/169 R, 169 TV, 208, 315/245, 291, 297; 340/334, 335, 340, 154, 324 R

[56] References Cited

U.S. PATENT DOCUMENTS

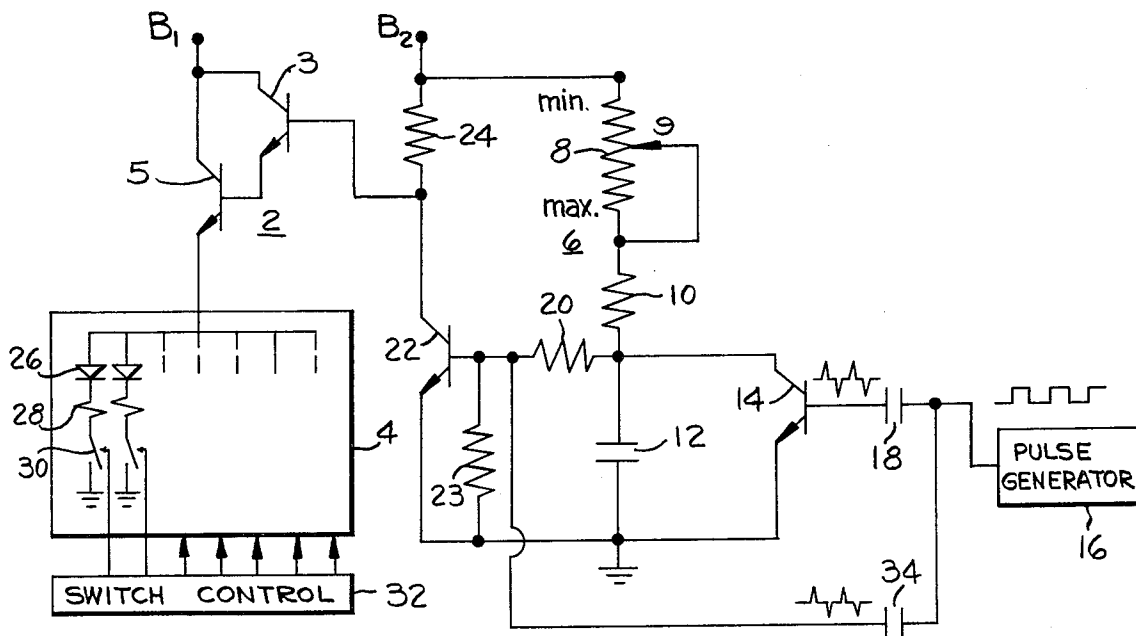
3,493,956 2/1970 Andrews et al. .... 340/334

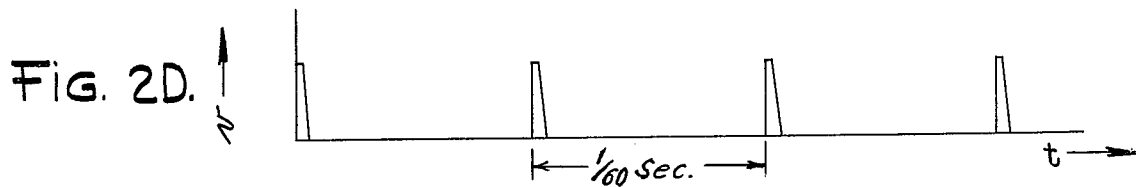
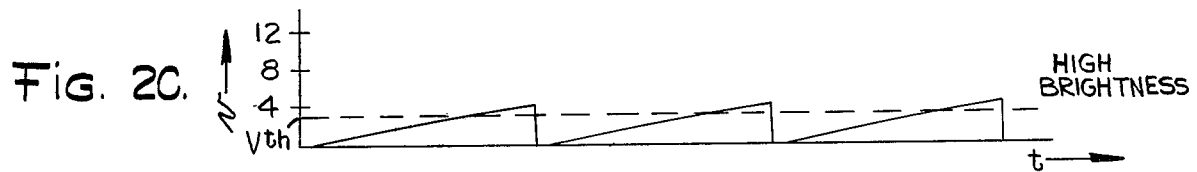
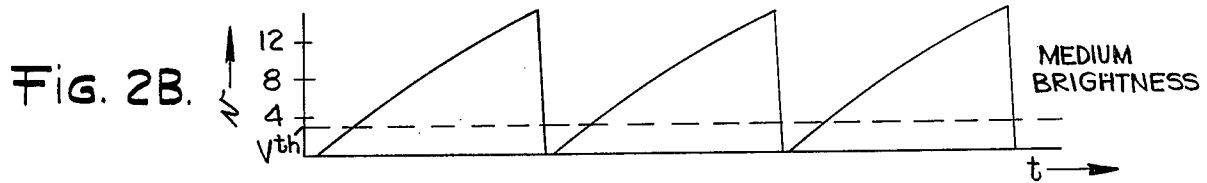
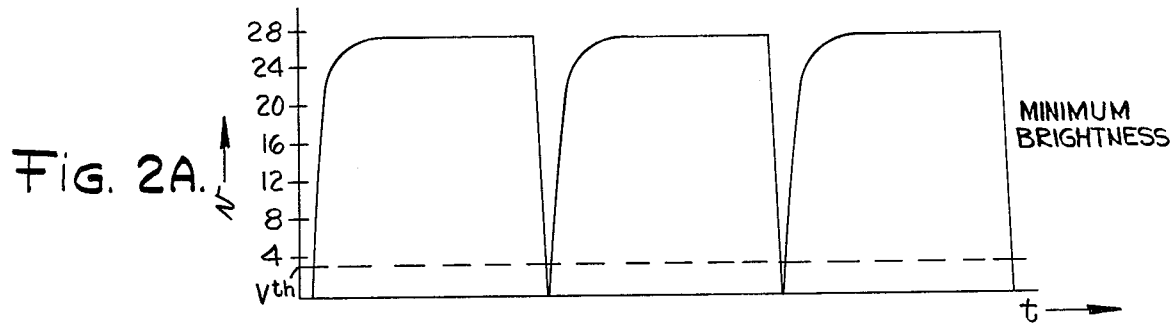
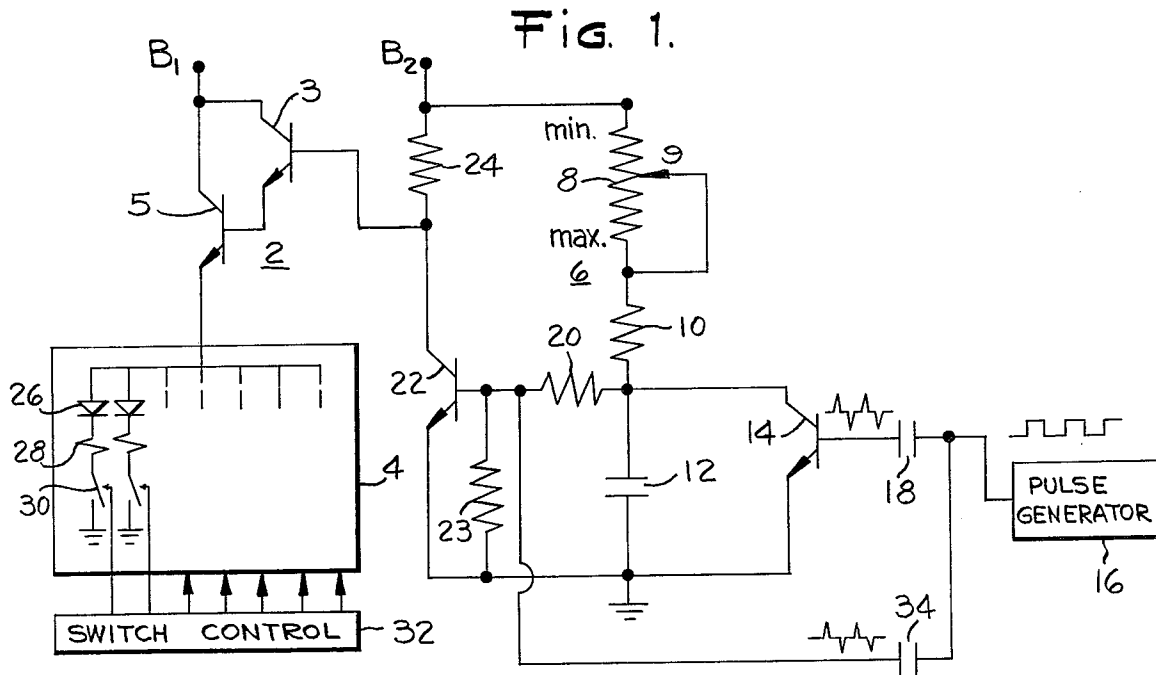
Primary Examiner—Maynard R. Wilbur  
Assistant Examiner—T. M. Blum  
Attorney, Agent, or Firm—Marvin A. Goldenberg

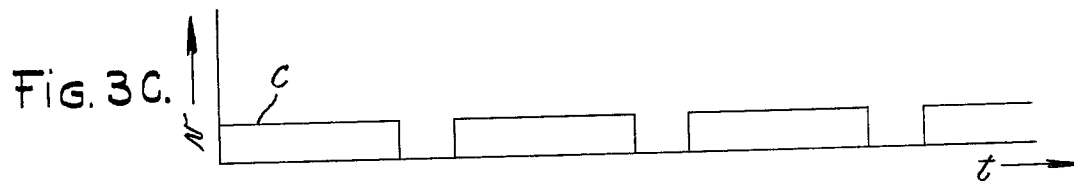
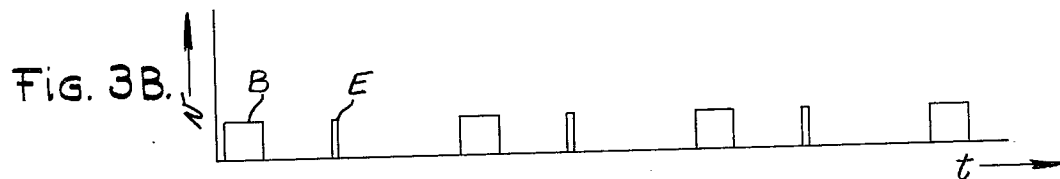
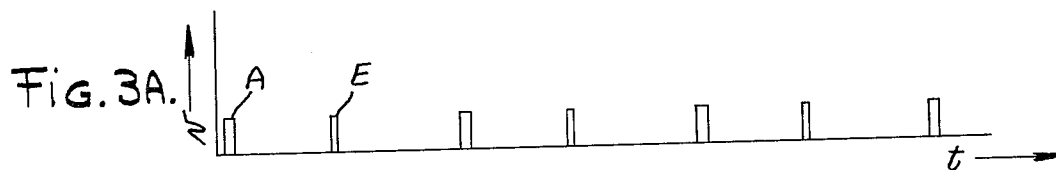
[57] ABSTRACT

A brightness control circuit for use with light emitting (LED) displays, or comparable electronic displays that are energized from a source of DC potential that supplies periodic pulses of constant peak current to the display elements, the display brightness being controlled as a function of the pulse duty cycle so as to achieve a uniform and continuous control of the display over a relatively wide range of brightness levels, extending particularly into the lower brightness region. Energizing current is coupled to the display by a transistor switching means actuated at a given frequency and with a duty cycle that is a function of the brightness control setting.

7 Claims, 8 Drawing Figures







## BRIGHTNESS CONTROL CIRCUIT FOR LED DISPLAYS

### BACKGROUND OF THE INVENTION

The invention pertains to electronic displays and to control circuitry for controlling the light output of these displays. In the more common type of brightness control circuit for electronic displays, the current supplied to the display elements is controlled as a function of the amount of illumination desired from the display. This is normally done by adjusting a resistance through which the energizing current flows, or by adjusting the supply voltage as applied through an emitter follower circuit. In addition to being inefficient and wasteful of energy, these forms of control have a limited range over which the illumination can be linearly controlled and tends to turn off completely at low brightness. As a related matter, the control circuit may be subject to temperature instabilities and excessive variations in component tolerances, giving rise to a nonuniform illumination from the display elements.

### SUMMARY OF THE INVENTION

It is accordingly one object of the invention to provide an improved brightness control circuit for LED and comparable electronic displays that provides a continuous control of the display elements over a wide range of brightness levels, extending particularly into the low brightness region.

Another object of the invention is to provide a brightness control circuit that provides uniform illumination from the display elements over a wide range of brightness levels.

A further object of the invention is to provide a brightness control circuit which is of relatively simple circuit configuration and may be inexpensively constructed.

Another object of the invention is to provide a brightness control circuit that is highly reproducible on a mass production basis.

These and other objects of the invention are accomplished in accordance with one aspect of the invention by a brightness control circuit for controlling the current flow from a source of energizing potential to an electronic display, the output of said potential source being coupled through a transistor switching means for supplying pulses of approximately constant peak current to the display elements. The transistor switching means is controlled so as to provide a periodic on/off operation having a duty cycle that is varied to control the brightness of the display. The operation of the transistor switching means is controlled as a function of a drive signal of approximately constant peak voltage derived from a capacitive charge-discharge circuit. This circuit includes a capacitor that is charged through a serially connected charge circuit means which includes a brightness control resistor whose resistance is adjusted for a selected condition of brightness to determine the initial rate of charge of said capacitor voltage, the capacitor being periodically and briefly discharged through a discharge transistor. During the charge time the capacitor voltage is made to exceed a given threshold voltage  $V_{th}$ , and during discharge the capacitor voltage is reduced toward a reference level that is below  $V_{th}$ . A threshold voltage sensing transistor having its input coupled to the capacitor through a resistor voltage divider circuit and its output coupled to the

input of the transistor switching means responds to the voltage across the capacitor and derives at its output a drive signal having a duty cycle that is dependent upon the relative time said capacitor voltage is above and below  $V_{th}$ . Thus, the threshold voltage sensing transistor provides the transistor switching means with a precise on/off operation.

In accordance with a further aspect of the invention, circuit means are provided for periodically actuating the threshold voltage sensing transistor irrespective of the voltage across the capacitor, to ensure that this transistor will not remain continuously in a single operating state should the capacitor voltage fail to be reduced below  $V_{th}$  during discharge.

### BRIEF DESCRIPTION OF THE DRAWING

While the specification concludes with the claims which particularly point out and distinctly define that subject matter which is regarded as the invention, it is believed that the invention will be more clearly understood when considering the following detailed description taken in connection with the accompanying figures of the drawing in which:

FIG. 1 is a schematic circuit diagram of a brightness control circuit for controlling the illumination of an LED display;

FIGS. 2A, 2B, 2C and 2D are graphs of various waveforms pertaining to the operation of the circuit of FIG. 1; and

FIGS. 3A, 3B and 3C are also graphs of various waveforms pertaining to the circuit operation.

### DESCRIPTION OF THE PREFERRED EMBODIMENT

With reference to FIG. 1 of the drawing, there is illustrated a schematic circuit diagram of a brightness control circuit for use with an LED or comparable electronic display, which includes a source of DC potential  $B_1$  that is applied through a transistor switching means 2 to an LED display 4. Transistor switching means 2 is in the form of a Darlington pair of NPN transistors 3 and 5 connected with their collectors joined together to  $B_1$ , and providing a constant peak voltage output at the emitter of transistor 5 in an emitter follower configuration with the components of the LED display 4. A second source of DC potential  $B_2$  is applied through a brightness control resistance 6, composed of a tapped resistor 8 connected in series with a fixed resistor 10, to one side of a charge-discharge capacitor 12. For an efficient operation of the transistor switching means 2, the voltage of  $B_2$  is made greater than that of  $B_1$ . The other side of capacitor 12 is connected to ground. The tap for resistor 8 has one fixed terminal connected to the junction of resistors 8 and 10 and a movable contact selectively positioned at a point on resistor 8 between the extreme maximum and minimum brightness positions. The resistor 8 thus provides a variable resistance for developing a voltage across capacitor 12 in accordance with the level of brightness desired from the display.

An NPN transistor 14 is coupled in shunt with capacitor 12 for periodically discharging capacitor 12. The collector of transistor 14 is connected to the one side of capacitor 12 and its emitter is connected to ground. A pulse train from pulse generator 16, which may be of conventional form, is coupled through a first differentiating capacitor 18 to the base of transistor 14. In response to the positive spikes of the differentiated pulse

train, transistor 14 is periodically and briefly turned fully on for discharging the capacitor 12. The one side of capacitor 12 is also coupled through a resistor 20 to the base of a further NPN transistor 22, the base also being connected through a resistor 23 to ground. This transistor has its emitter connected to ground and its collector connected through a resistor 24 to source B2 and to the input of the Darlington pair at the base electrode of transistor 3. The transistor 22 responds to the voltage across capacitor 12 to become fully conductive when this voltage exceeds a threshold level that is established by the Veb of transistor 22, and to be nonconductive when the capacitor voltage is below the threshold level. Transistor 22 derives a drive signal for the transistor switching means 2 at its collector that is of constant peak voltage and has a duty cycle that is a function of the relative time the capacitor voltage is above and below the threshold level.

The LED display 4 is schematically represented as a matrix of current paths coupled in parallel, each path including the serial connections of a light emitting diode 26, a fixed resistor 28 and a switch 30. The switch 30 is illustrated as a mechanical component for simplicity but in a practical embodiment both the resistor 28 and switch 30 would normally be incorporated in a transistor switching device. The diodes 26 have their anodes joined together. The switches 30, with one terminal at ground, are selectively operated by a conventional switch control circuit 32 for connecting different combinations of LED current paths into the circuit in accordance with a particular information to be displayed. It is noted that the fixed resistors 28 are of equal value so that pulses of constant peak current are supplied to each of the LED elements connected into the circuit, irrespective of the number of such connected elements.

A second differentiating capacitor 34, having one side coupled to the output of pulse generator 16 and its other side coupled to the base of transistor 22, applies a differentiated pulse to said transistor. In response to the negative and positive spikes of the differentiated pulses, transistor 22 is caused to periodically turn off and turn on, respectively, irrespective of the voltage across the capacitor 12. Of particular importance are the negative spikes which in periodically turning off transistor 22 ensure that the display cannot turn fully off during settings of low brightness.

In considering one exemplary embodiment of applicant's invention, the circuit of FIG. 1 may employ the following component types and component values, which are given by way of example and not intended to be limiting of the invention:

<u>Transistors</u>	
3, 5, 14, 22	Type 2N3416
<u>Diodes</u>	
26	Light Emitting Diodes
<u>Resistors</u>	
7	2 Megohm
10	4.7 K ohm
20	390 K ohm
23	100 K ohm
24	27 K ohm
28	300 ohm
<u>Capacitors</u>	
12	.05 mf
18, 34	470 pf
<u>Source Potential</u>	
B1	6 volts
B2	27 volts

In the operation of the circuit of FIG. 1, capacitor 12 is charged from source B2 through the brightness control resistors 8 and 10. The movable contact 9 is set along the resistor 8 between maximum and minimum brightness positions to adjust the brightness level of the display. As will be seen, actual control of the display's light output brightness is accomplished through controlling the duty cycle of the drive signal applied to transistor switching means 2.

Changing the position of contact 9 adjusts the RC time constant for charging the capacitor 12, which is determined predominantly by the amount of resistance of resistor 8 connected into the circuit, the resistance of resistor 10 and the capacitance of capacitor 12. In adjusting this time constant, the rate at which voltage is developed across the capacitor 12 is correspondingly adjusted. The rate of voltage build-up is employed to control the duty cycle of the drive signal for switching means 2, as will be more clearly seen.

A discharge path for capacitor 12 is provided through transistor 14. As previously noted, the positive spikes of the differentiated pulses from pulse generator 16 act to briefly turn fully on transistor 14 for inserting the discharge path into the circuit. A graph of these positive spikes is illustrated in FIG. 2D. The time for charging capacitor 12 is the time between positive voltage spikes, which is the pulse period less the spike width. In the embodiment under consideration, the pulse period is conveniently 1/60 second and the spike width approximately 1/10 millisecond. The charge RC time constant, which is a measure of the initial rate of change of voltage developed across the capacitor, may be adjusted from less than a millisecond, which is a fraction of the charge time, to several times the charge time such as over 100 milliseconds. The discharge RC time constant for optimum operation is substantially less than the spike width of 1/10 milliseconds so as to permit complete discharge of capacitor 12.

When contact 9 is set for minimum brightness, which inserts a minimum amount of resistance into the charge circuit, voltage is rapidly developed across the capacitor 12 at maximum initial rate of change, as shown in the capacitor voltage vs. time curve of FIG. 2A. It is seen that the capacitor voltage rapidly builds up to its maximum value and remains at this value during most of the charge time. Correspondingly, as the setting of contact 9 is adjusted for successively greater brightness, the charge resistance is increased to develop voltages across the capacitor 12 at successively lower initial rates of change. FIGS. 2B and 2C show capacitor voltage curves for selected medium and high brightness conditions, respectively, bearing in mind there may be numerous other brightness settings, each exhibiting its own capacitor voltage curve. In FIG. 2B the voltage develops to about half the maximum value during the charge time, and in FIG. 2C it develops to a relatively low value. From FIGS. 2A, 2B and 2C, it is seen that the capacitor 12 is charged at an initial rate corresponding to the selected brightness setting to a resulting voltage, and is then rapidly discharged, the charge-discharge operation being done in a cyclical manner at an established frequency. While the voltage developed across the capacitor at the end of the charge time is a function of the initial rate of change of voltage and the charge time, of principal importance to the operation of the circuit is the initial rate of change of voltage and the ratio of the time the voltage is above and below an established threshold level  $V_{th}$ .

# Explore Litigation Insights

Docket Alarm provides insights to develop a more informed litigation strategy and the peace of mind of knowing you're on top of things.

## Real-Time Litigation Alerts



Keep your litigation team up-to-date with **real-time alerts** and advanced team management tools built for the enterprise, all while greatly reducing PACER spend.

Our comprehensive service means we can handle Federal, State, and Administrative courts across the country.

## Advanced Docket Research



With over 230 million records, Docket Alarm's cloud-native docket research platform finds what other services can't. Coverage includes Federal, State, plus PTAB, TTAB, ITC and NLRB decisions, all in one place.

Identify arguments that have been successful in the past with full text, pinpoint searching. Link to case law cited within any court document via Fastcase.

## Analytics At Your Fingertips



Learn what happened the last time a particular judge, opposing counsel or company faced cases similar to yours.

Advanced out-of-the-box PTAB and TTAB analytics are always at your fingertips.

## API

Docket Alarm offers a powerful API (application programming interface) to developers that want to integrate case filings into their apps.

## LAW FIRMS

Build custom dashboards for your attorneys and clients with live data direct from the court.

Automate many repetitive legal tasks like conflict checks, document management, and marketing.

## FINANCIAL INSTITUTIONS

Litigation and bankruptcy checks for companies and debtors.

## E-DISCOVERY AND LEGAL VENDORS

Sync your system to PACER to automate legal marketing.