

(12) **United States Patent**  
**Chan et al.**

(10) **Patent No.:** **US 6,381,603 B1**  
 (45) **Date of Patent:** **Apr. 30, 2002**

(54) **SYSTEM AND METHOD FOR ACCESSING LOCAL INFORMATION BY USING REFERENCING POSITION SYSTEM**

5,950,173 A \* 9/1999 Perkowski ..... 705/26  
 6,002,853 A \* 12/1999 de Hond ..... 395/200.49  
 6,055,516 A \* 4/2000 Johnson et al. .... 705/27

(75) Inventors: **Jawe Chan; Ting-Mao Chang**, both of San Jose, CA (US)

\* cited by examiner  
*Primary Examiner*—Jean R. Homere  
 (74) *Attorney, Agent, or Firm*—Skjerven Morrill MacPherson, LLP

(73) Assignee: **Position IQ, Inc.**, San Jose, CA (US)

(\* ) Notice: Subject to any disclaimer, the term of this patent is extended or adjusted under 35 U.S.C. 154(b) by 0 days.

(57) **ABSTRACT**

A system and method for accessing local information in a database. The database is organized with merchandise information including identifier of information provider, identifier information, position information, and description information. The position information is position coordinates of a Global Position System that provides an accurate and fast location search capability of the database. The user of an end-user computer system is able to search the database by sending a query to a remote server computer system. The query includes searching geographic area and searching criteria. After receiving the query, the server computer system **10** then queries the database and receives information from the database query. The server computer **10** returns the search result to the user's computer system. The returned search result includes the identifier of the information provider, identifier of the information, description of information that matches the searching criteria, and position coordinates. The position coordinates may be further utilized by other Global Position System applications, for example route search and navigation.

(21) Appl. No.: **09/253,931**

(22) Filed: **Feb. 22, 1999**

(51) **Int. Cl.<sup>7</sup>** ..... **G06F 17/30**

(52) **U.S. Cl.** ..... **707/10; 707/3; 707/5; 707/102; 701/201; 701/207; 701/213; 705/26; 705/27; 709/203**

(58) **Field of Search** ..... **707/3, 10, 102, 707/5; 705/26, 27; 701/201, 207, 213; 709/203**

(56) **References Cited**

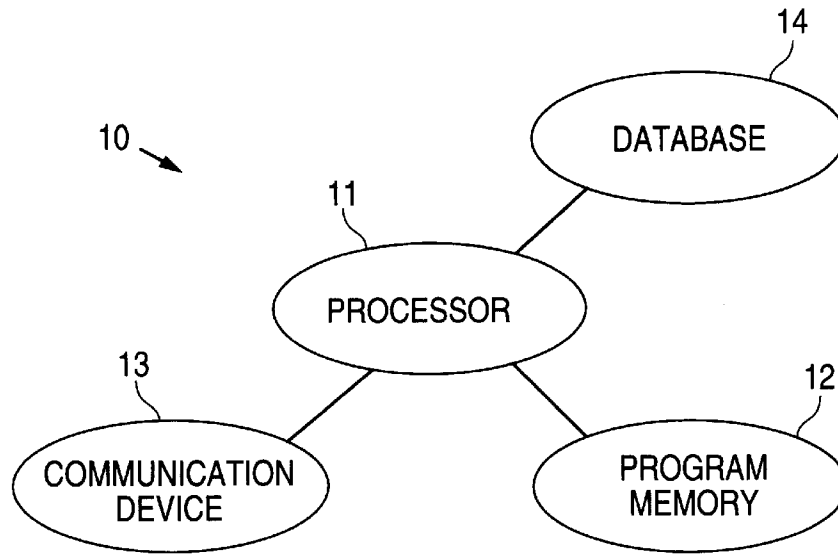
U.S. PATENT DOCUMENTS

5,751,246 A \* 5/1998 Hertel ..... 342/357.07  
 5,802,492 A \* 9/1998 DeLorme et al. .... 455/456  
 5,839,088 A \* 11/1998 Hancock et al. .... 701/213  
 5,867,799 A \* 2/1999 Lang et al. .... 707/1  
 5,870,741 A \* 2/1999 Kawabe et al. .... 707/5  
 5,948,040 A \* 9/1999 DeLorme et al. .... 701/201

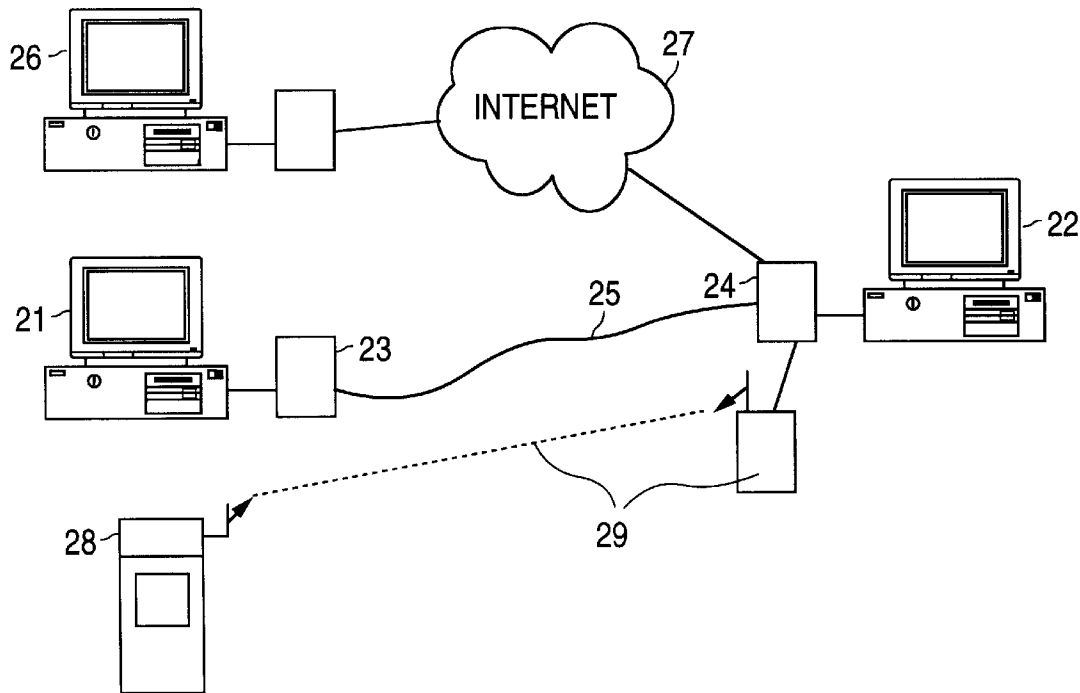
**102 Claims, 13 Drawing Sheets**

The screenshot shows a GPS application window with a menu bar (File, View, Tools, Options), a map of a city grid, and a search interface on the right. The search interface includes fields for 'Merchandise Criteria' (Yamaha AND Piano), 'Merchandise Price' (2000 - 3000), 'Position', 'Range', and 'CITY'. A 'Submit' button is present. Below the search fields is a table with 4 columns: Index, Merchant, Merchandise, and Price. The table contains three rows of results. A current position marker is shown on the map. The interface also includes a scale bar (0.50 km) and a status bar at the bottom with 'Start', 'ABC GPS', and a time display '1:41 AM'.

| Index | Merchant    | Merchandise | Price |
|-------|-------------|-------------|-------|
| ①     | Fry's       | YamahaPiano | 2389  |
| ②     | GoodGuy     | YamahaPiano | 2498  |
| ③     | ComputerUSA | YamahaPiano | 2999  |



**FIG. 1**  
(PRIOR ART)



**FIG. 2**  
(PRIOR ART)

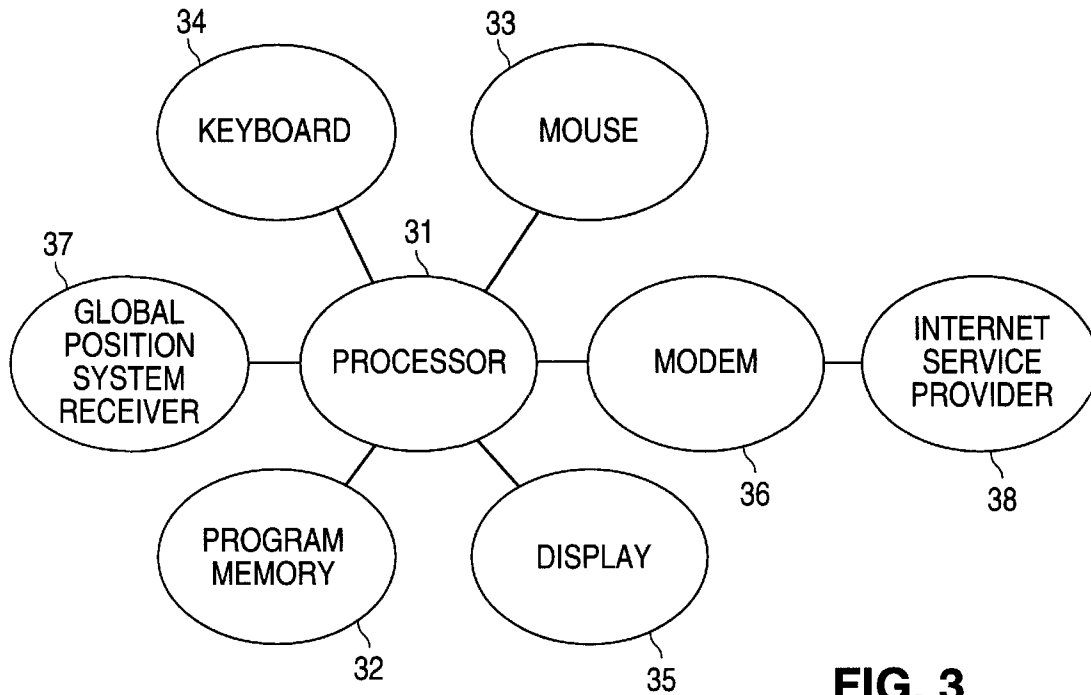


FIG. 3

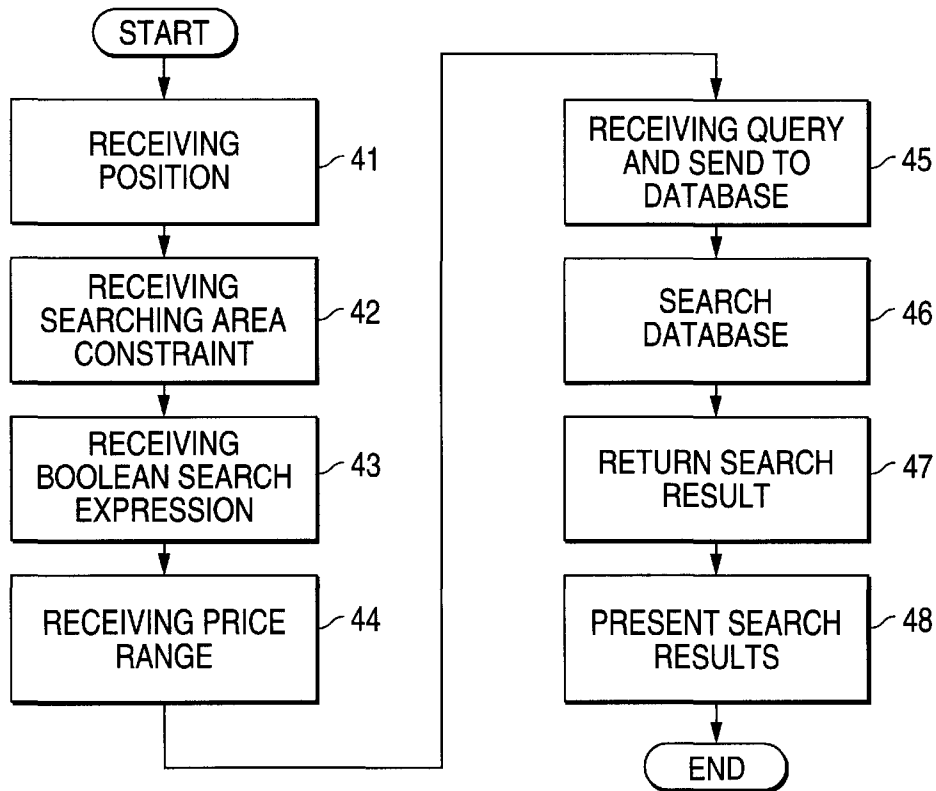


FIG. 4

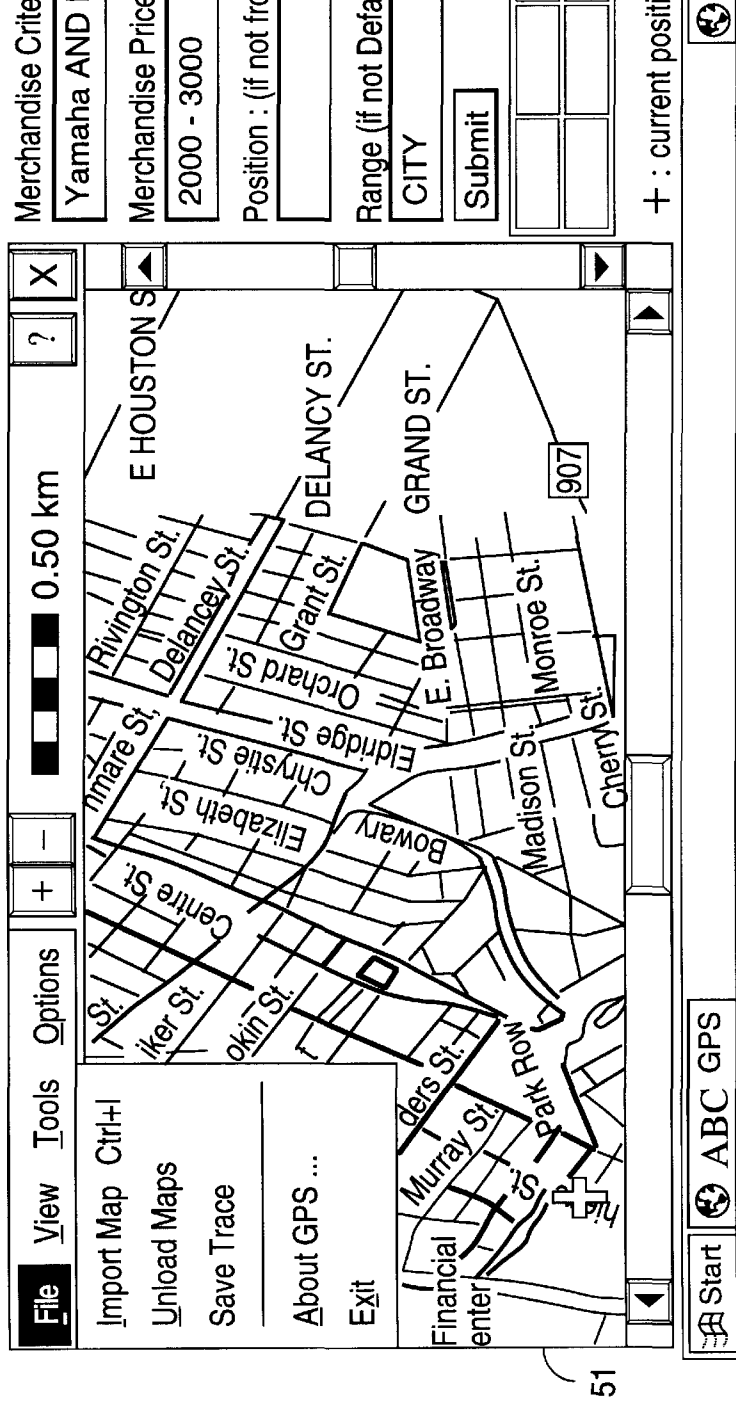


FIG. 5

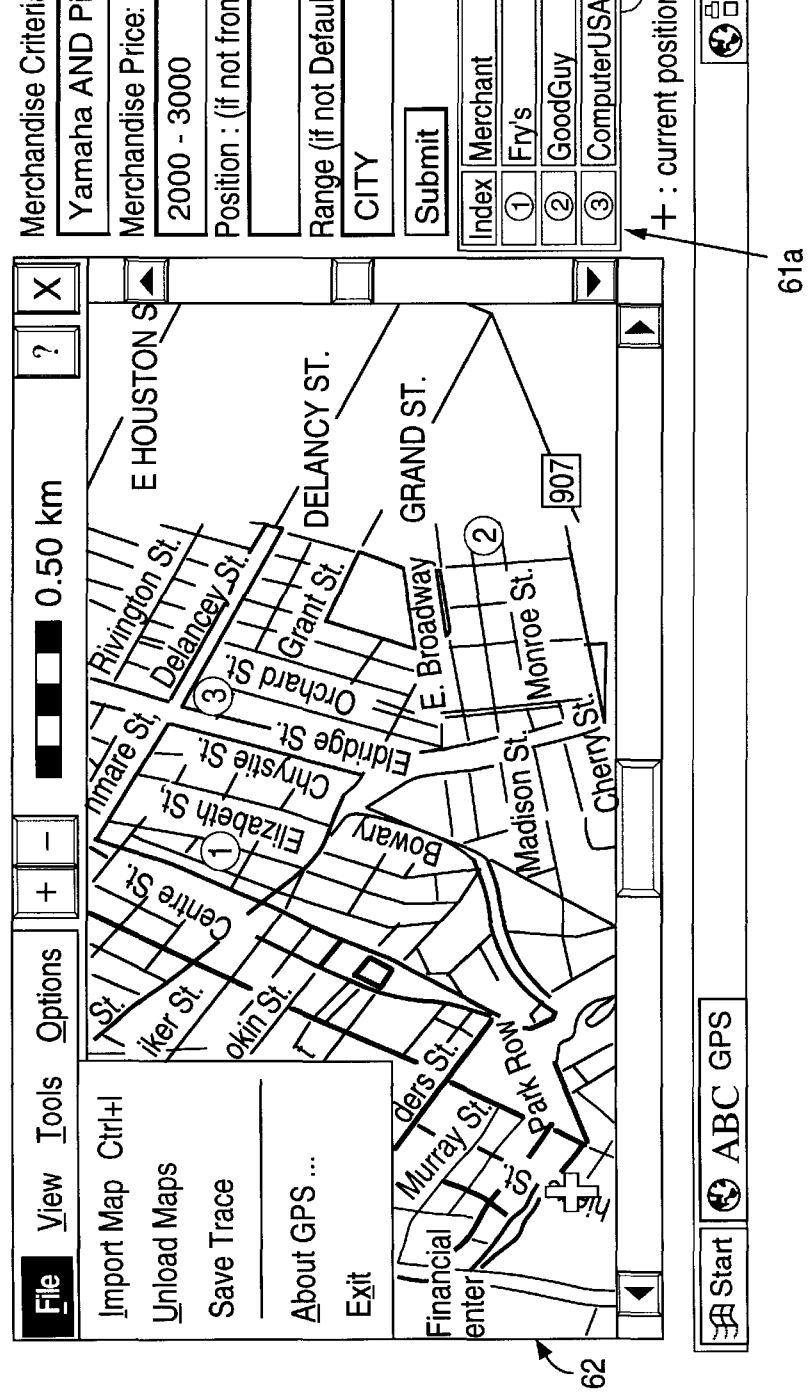


FIG. 6

# Explore Litigation Insights

Docket Alarm provides insights to develop a more informed litigation strategy and the peace of mind of knowing you're on top of things.

## Real-Time Litigation Alerts



Keep your litigation team up-to-date with **real-time alerts** and advanced team management tools built for the enterprise, all while greatly reducing PACER spend.

Our comprehensive service means we can handle Federal, State, and Administrative courts across the country.

## Advanced Docket Research



With over 230 million records, Docket Alarm's cloud-native docket research platform finds what other services can't. Coverage includes Federal, State, plus PTAB, TTAB, ITC and NLRB decisions, all in one place.

Identify arguments that have been successful in the past with full text, pinpoint searching. Link to case law cited within any court document via Fastcase.

## Analytics At Your Fingertips



Learn what happened the last time a particular judge, opposing counsel or company faced cases similar to yours.

Advanced out-of-the-box PTAB and TTAB analytics are always at your fingertips.

## API

Docket Alarm offers a powerful API (application programming interface) to developers that want to integrate case filings into their apps.

## LAW FIRMS

Build custom dashboards for your attorneys and clients with live data direct from the court.

Automate many repetitive legal tasks like conflict checks, document management, and marketing.

## FINANCIAL INSTITUTIONS

Litigation and bankruptcy checks for companies and debtors.

## E-DISCOVERY AND LEGAL VENDORS

Sync your system to PACER to automate legal marketing.