



(19) **United States**

(12) **Patent Application Publication** (10) **Pub. No.: US 2004/0059938 A1**
Hughes et al. (43) **Pub. Date: Mar. 25, 2004**

(54) **HARDWARE ID TO PREVENT SOFTWARE PIRACY** (52) **U.S. Cl.** **713/200; 705/59**

(75) **Inventors:** **Aidan T. Hughes**, Bellevue, WA (US);
David Barnaby Pearce, West Palm Beach, FL (US) (57) **ABSTRACT**

Correspondence Address:
MERCHANT & GOULD
P.O. BOX 2903
MINNEAPOLIS, MN 55402-0903 (US)

(73) **Assignee:** **Microsoft Corporation**, Redmond, WA (US)

(21) **Appl. No.:** **10/668,580**

(22) **Filed:** **Sep. 23, 2003**

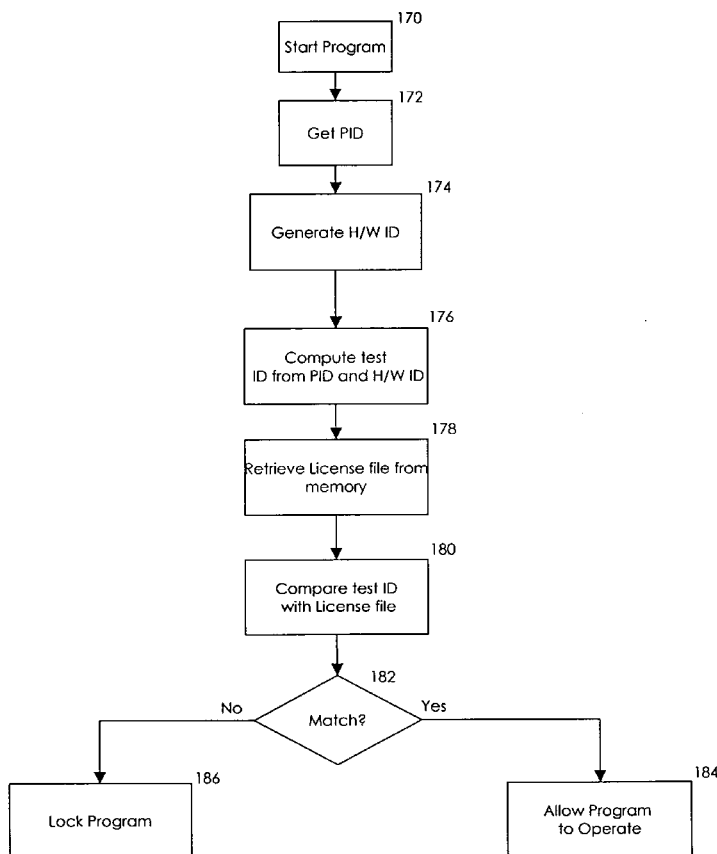
Related U.S. Application Data

(60) Division of application No. 09/859,915, filed on May 17, 2001, which is a continuation-in-part of application No. 09/070,518, filed on Apr. 29, 1998, now Pat. No. 6,243,468.

Publication Classification

(51) **Int. Cl.⁷** **G06F 12/14; H04L 9/00**

In one embodiment, the invention is a 64 bit hardware ID (H/W ID) for tying a software product to a particular computer to prevent software piracy. The 64 bit hardware ID represents ten different components of the user's computer: the CD-ROM device, the disk adapter, the disk device, the display adapter, the first drive serial number, the MAC address, the processor serial number, the processor type, the RAM size in Mb, and the SCSI adapter. Each time the software product is opened, the expanded H/W ID is compared to the hardware on the computer to determine whether a predetermined minimum number of components match. In one embodiment, the expanded H/W ID allows for expansion of the user's computer because so long as the component originally listed in the expanded H/W ID can be found on the computer, then that component matches the expanded H/W ID. Typically, seven out of ten components in the expanded HIW ID must match the computer before the software product will fully operate.



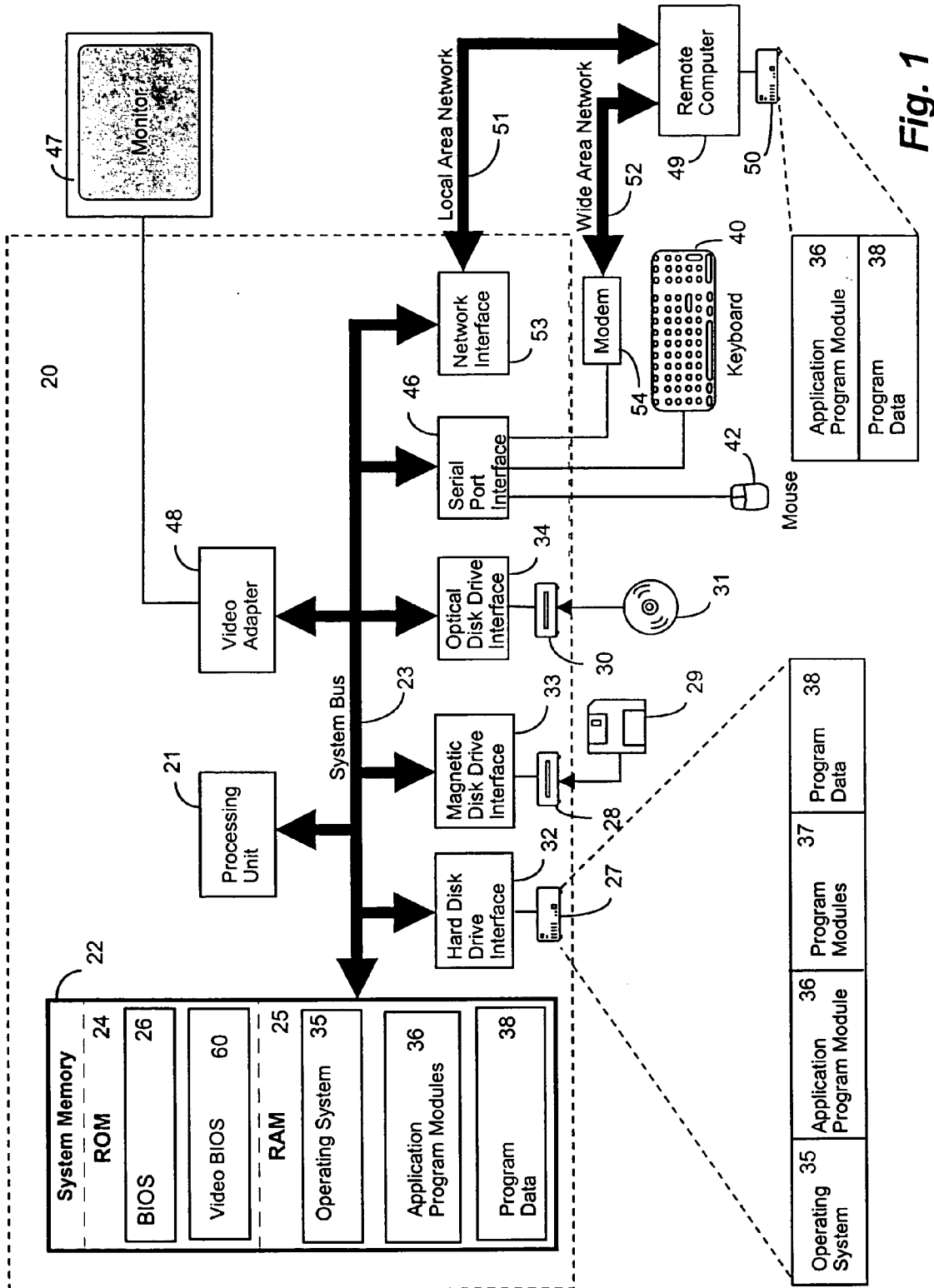


Fig. 1

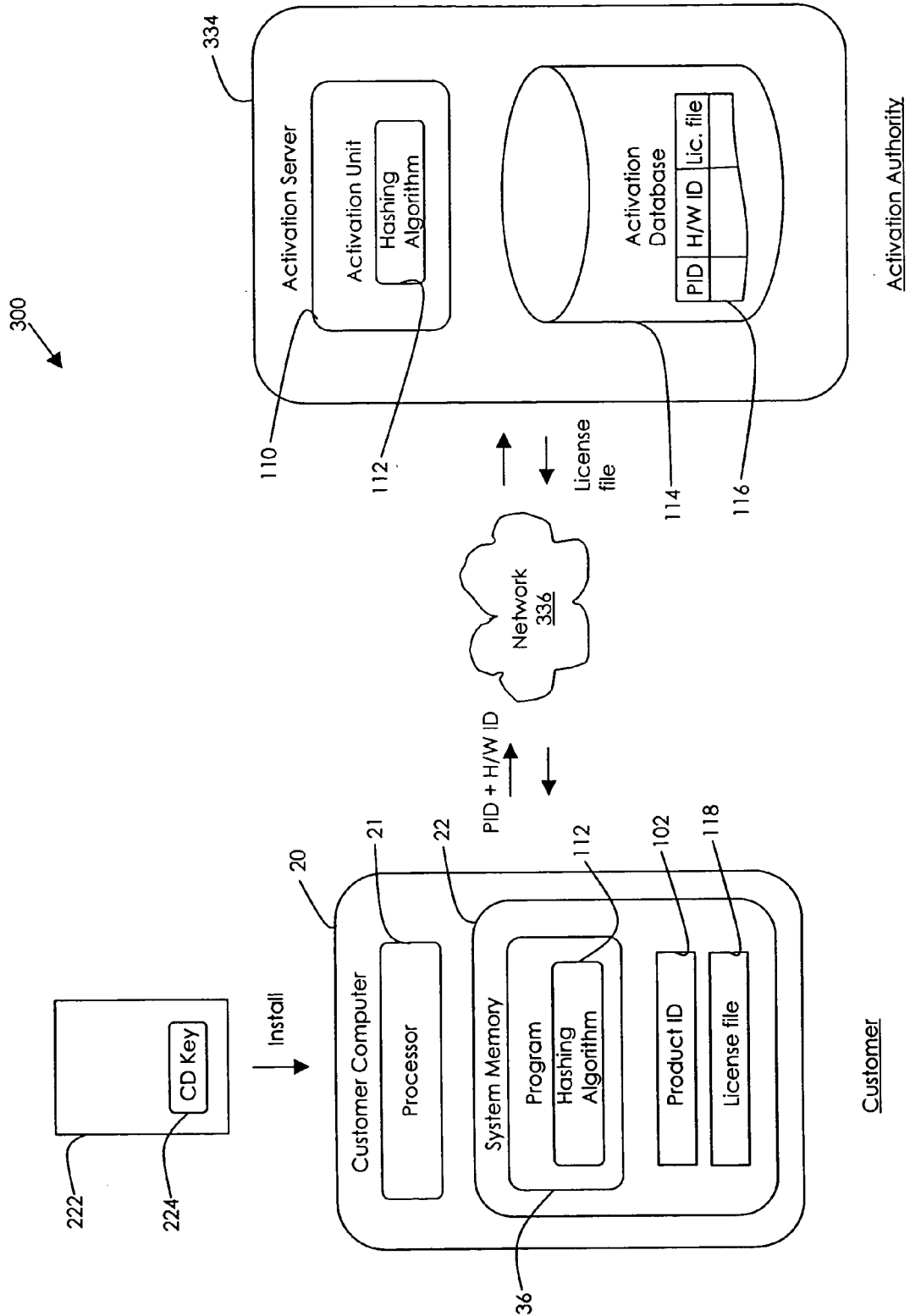


Fig. 2

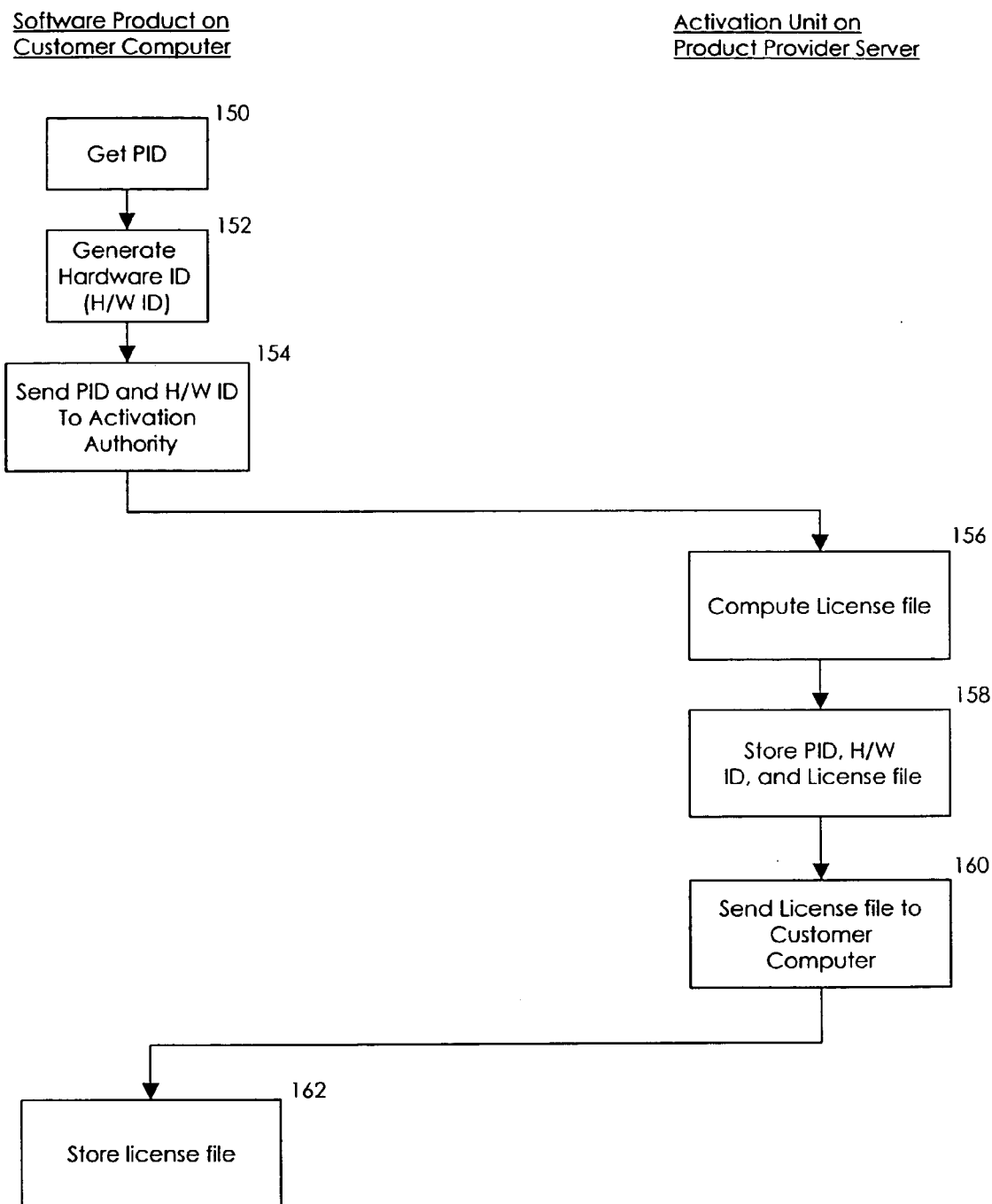


Fig. 3

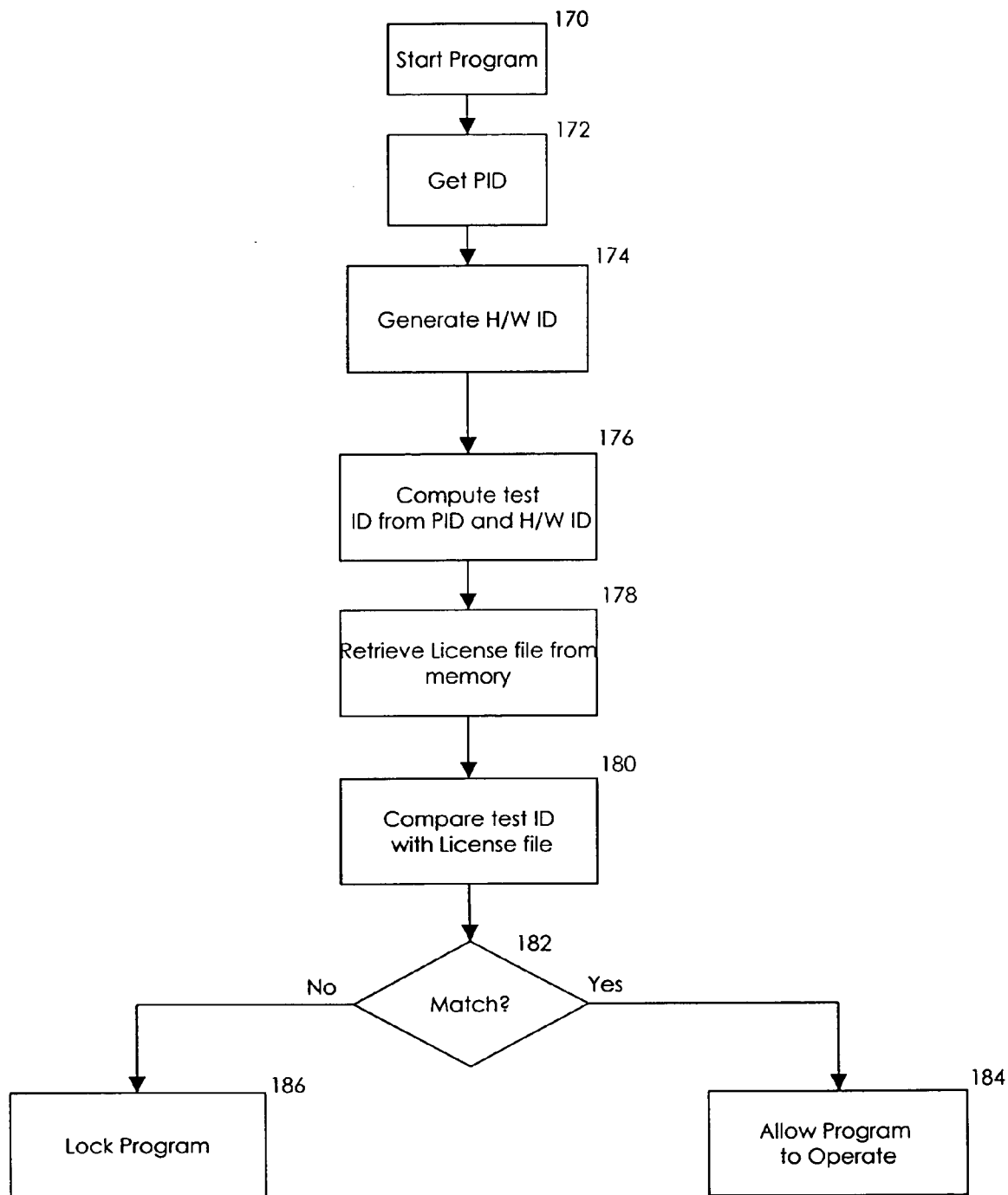


Fig. 4

Explore Litigation Insights

Docket Alarm provides insights to develop a more informed litigation strategy and the peace of mind of knowing you're on top of things.

Real-Time Litigation Alerts



Keep your litigation team up-to-date with **real-time alerts** and advanced team management tools built for the enterprise, all while greatly reducing PACER spend.

Our comprehensive service means we can handle Federal, State, and Administrative courts across the country.

Advanced Docket Research



With over 230 million records, Docket Alarm's cloud-native docket research platform finds what other services can't. Coverage includes Federal, State, plus PTAB, TTAB, ITC and NLRB decisions, all in one place.

Identify arguments that have been successful in the past with full text, pinpoint searching. Link to case law cited within any court document via Fastcase.

Analytics At Your Fingertips



Learn what happened the last time a particular judge, opposing counsel or company faced cases similar to yours.

Advanced out-of-the-box PTAB and TTAB analytics are always at your fingertips.

API

Docket Alarm offers a powerful API (application programming interface) to developers that want to integrate case filings into their apps.

LAW FIRMS

Build custom dashboards for your attorneys and clients with live data direct from the court.

Automate many repetitive legal tasks like conflict checks, document management, and marketing.

FINANCIAL INSTITUTIONS

Litigation and bankruptcy checks for companies and debtors.

E-DISCOVERY AND LEGAL VENDORS

Sync your system to PACER to automate legal marketing.