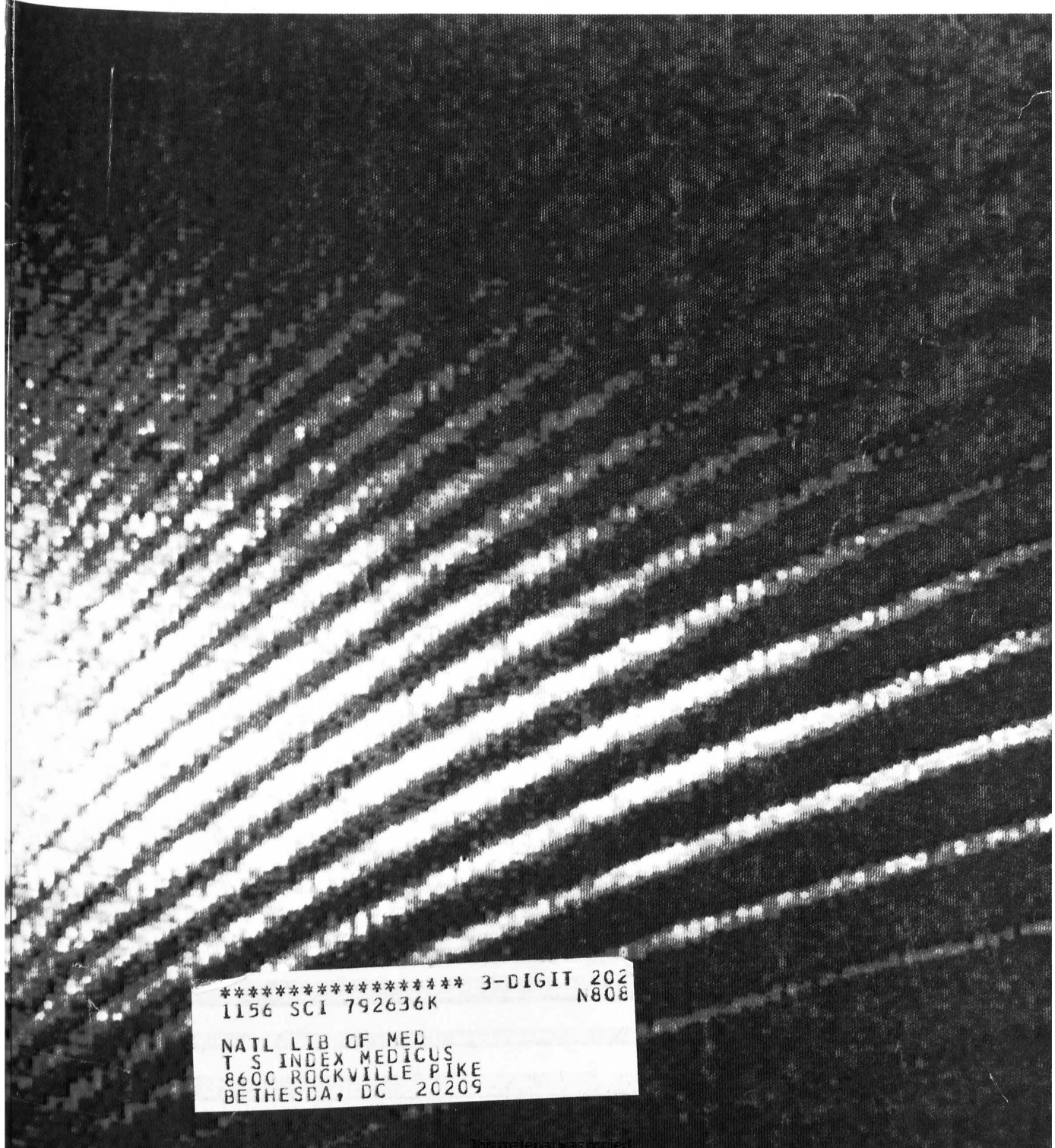


NUMBER 4007 VOL 920 NO 4717
WT SC653
V.229 NO.4717 1985
C.02-----SEQ: S11420000
TI: SCIENCE

\$2.50

INCE

AMERICAN ASSOCIATION FOR THE ADVANCEMENT OF SCIENCE



***** 3-DIGIT 202
1156 SCI 792636K N808
NATL LIB OF MED
T S INDEX MEDICUS
8600 ROCKVILLE PIKE
BETHESDA, DC 20209

	This Week in <i>Science</i>	911
LETTERS	The Electricity Industry: <i>A. B. Lovins; M. Crawford; C. Whipple</i>	914
EDITORIAL	Memorandum to Universal Science Foundation	921
ARTICLES	Seismology of the Sun: <i>J. Christensen-Dalsgaard, D. Gough, J. Toomre</i>	923
	Intrinsic and Extrinsic Factors in Protein Antigenic Structure: <i>J. A. Berzofsky</i>	932
	Sequence and Structure of a Human Glucose Transporter: <i>M. Mueckler et al.</i>	941
NEWS AND COMMENT	Reagan Announces New ASAT Test	946
	NIH to Award 2200 New Grants	947
	Bomb Scandal Highlights French Testing	948
	U.S., Mexico Pledge Smelter Controls	949
	<i>Briefing: Biotechnology's Movie Debut Worries Industry; Academy's Fusion Study Causes a Stir; British Scientists Urge Supercomputer Program; Ohio State's Telescope Granted 10-Year Reprieve</i>	950
	"Spy Dust" Irritates Diplomats	952
RESEARCH NEWS	Continental Drift Nearing Certain Detection	953
	An Agenda for Space Physics	954
	WIMP's, Cosmions, and Solar Neutrinos	955
	<i>Nitrogen Fixation Briefing: Fixing Nitrogen Without Molybdenum?; Gene Rearrangements in a Prokaryote</i>	956

BOARD OF DIRECTORS	DAVID A. HAMBURG Retiring President, Chairman	GERARD PIEL President	LAWRENCE BOGORAD President-Elect	ROBERT McC. ADAMS ROBERT W. BERLINER	MILDRED DRESSSELHAUS DONALD N. LANGENBERG
CHAIRMEN AND SECRETARIES OF AAAS SECTIONS	MATHEMATICS (A) Daniel Zelinsky Lynn Arthur Steen	PHYSICS (B) Ralph O. Simmons Rolf M. Sinclair	CHEMISTRY (C) Rustum Roy Jean'ne M. Shreeve	ASTRONOMY (D) David Morrison John E. Gaustad	
	PSYCHOLOGY (J) John I. Lacey William N. Dember	SOCIAL, ECONOMIC, AND POLITICAL SCIENCES (K) David Mechanic David L. Silles		HISTORY AND PHILOSOPHY OF SCIENCE (L) Edward Grant Arthur L. Norberg	ENGINEERING (M) Henry McGee W. Edward Lear
	EDUCATION (Q) John F. Schaff Joseph D. Novak	DENTISTRY (R) Gordon H. Rovelstad Harold M. Fullmer	PHARMACEUTICAL SCIENCES (S) Edward G. Rippie Betty-ann Hoener	INFORMATION, COMPUTING, AND COMMUNICATION (T) Karen B. Levitan Elliot R. Siegel	
DIVISIONS	ARCTIC DIVISION		CARIBBEAN DIVISION		PACIFIC DIVISION
	Robert White President	Gunter E. Weller Executive Secretary	Juan A. Bonnet, Jr. President	Lucy Gaspar Secretary-Treasurer	Walter Gardner President Alan E. Leviton Executive Director

SCIENCE is published weekly on Friday, except the last week in December, by the American Association for the Advancement of Science, 1333 H Street, NW, Washington, D.C. 20005. Second-class postage (publication No. 484480) paid at Washington, D.C., and at an additional entry. Now combined with *The Scientific Monthly*. Copyright © 1985 by the American Association for the Advancement of Science. Domestic individual membership and subscription (51 issues): \$60. Domestic institutional subscription (51 issues): \$98. Foreign postage extra: Canada \$24, other (surface mail) \$27, air-surface via Amsterdam \$65. First class, airmail, school-year, and student rates on request. Single copies \$2.50 (\$3 by mail); back issues \$3 (\$3.50 by mail); Biotechnology issue, \$5 (\$5.50 by mail); classroom rates on request. **Change of address:** allow 6 weeks, giving old and new addresses and seven-digit account number. Authorization to photocopy material for internal or personal use under circumstances not falling within the fair use provisions of the Copyright Act is granted by AAAS to libraries and other users registered with the Copyright Clearance Center (CCC) Transactional Reporting Service, provided that the base fee of \$1 per copy plus \$0.10 per page is paid directly to CCC, 21 Congress Street, Salem, Massachusetts 01970. The identification code for *Science* is 0036-8075/83 \$1 + .10. **Postmaster:** Send Form 3579 to *Science*, 1333 H Street, NW, Washington, D.C. 20005. *Science* is indexed in the *Reader's Guide to Periodical Literature* and in several specialized indexes.

AAAS NEWS Professional Ethics Group Reports on Spring Meeting: *S. Painter*; Call for Nominations; Summer Fellows Work on Environmental Issues and with Mass Media; Issues on Arms Control Featured in New Publications; AAAS Offers Desk Diary for 1986; Call for Nominations: 1986 General Election; Arid Lands Conference Slated for October in Tucson 958

BOOK REVIEWS Reproductive Decisions, reviewed by *J. B. Silk*; The Neurobiology of Motivation and Reward, *F. Toates*; Geomorphology, *P. C. Patton*; The Creation of Quantum Mechanics and the Bohr-Pauli Dialogue, *L. Wessels*; Books Received 961

REPORTS

Rare Earths: Atmospheric Signatures for Oil-Fired Power Plants and Refineries: *I. Olmez and G. E. Gordon* 966

Crassulacean Acid Metabolism in the Strangler *Clusia rosea* Jacq.: *I. P. Ting, E. M. Lord, L. da S. L. Sternberg, M. J. DeNiro* 969

A 1500-Year Record of Tropical Precipitation in Ice Cores from the Quelccaya Ice Cap, Peru: *L. G. Thompson, E. Mosley-Thompson, J. F. Bolzan, B. R. Koci* 971

Amplification of a Novel *v-erbB*-Related Gene in a Human Mammary Carcinoma: *C. R. King, M. H. Kraus, S. A. Aaronson* 974

The *neu* Gene: An *erbB*-Homologous Gene Distinct from and Unlinked to the Gene Encoding the EGF Receptor: *A. L. Schechter et al.* 976

Isolation and Propagation of a Human Enteric Coronavirus: *S. Resta, J. P. Luby, C. R. Rosenfeld, J. D. Siegel* 978

Recombinant Vaccinia Virus: Immunization Against Multiple Pathogens: *M. E. Perkus, A. Piccini, B. R. Lipinkas, E. Paoletti* 981

Growth Regulation of Human Melanocytes: Mitogenic Factors in Extracts of Melanoma, Astrocytoma, and Fibroblast Cell Lines: *M. Eisinger, O. Marko, S.-I. Ogata, L. J. Old* 984

Hallucinogenic Amphetamine Selectively Destroys Brain Serotonin Nerve Terminals: *G. Ricaurte, G. Bryan, L. Strauss, L. Seiden, C. Schuster* 986

Gonadotropin-Releasing Hormone Binding Sites in Human Breast Carcinoma: *K. A. Eidne, C. A. Flanagan, R. P. Millar* 989

Tissue Factor Gene Localized to Human Chromosome 1 (1pter→1p21): *S. D. Carson, W. M. Henry, T. B. Shows* 991

DOROTHY NELKIN JOHN E. SAWYER	SHEILA E. WIDNALL LINDA S. WILSON	WILLIAM T. GOLDEN Treasurer	WILLIAM D. CAREY Executive Officer
GEOLOGY AND GEOGRAPHY (E) William H. Matthews III Helen M. McCammon	BIOLOGICAL SCIENCES (G) Betty M. Twarog Judith P. Grassle	ANTHROPOLOGY (H) Albert C. Spaulding Priscilla Reining	
MEDICAL SCIENCES (N) Alfred P. Fishman Jonathan E. Rhoads	AGRICULTURE (O) Roy G. Creech Raiph J. McCracken	INDUSTRIAL SCIENCE (P) Robert H. Pry Robert L. Stern	
STATISTICS (U) J. Stuart Hunter Edward J. Wegman	ATMOSPHERIC AND HYDROSPHERIC (W) F. Kenneth Hare Bernice Ackerman	GENERAL (X) Harold P. Green Rodney W. Nichols	
SOUTHWESTERN AND ROCKY MOUNTAIN DIVISION			
Donald J. Nash President	M. Michelle Balcomb Executive Director		

The American Association for the Advancement of Science was founded in 1848 and incorporated in 1874. Its objects are to further the work of scientists, to facilitate cooperation among them, to foster scientific freedom and responsibility, to improve the effectiveness of science in the promotion of human welfare, and to increase public understanding and appreciation of the importance and promise of the methods of science in human progress.

COVER

Power as observed in solar 5-minute oscillations with frequency ν (from about 1.5 mHz at bottom to 5.7 mHz at top and degree l (from about 7 on left to 170 on right). The narrow ridges of concentrated power (shown by the lighter tones) corresponds to theoretically predicted acoustic resonances in the sun. Analysis of observed frequencies permits study of the structure and dynamics of the solar interior. See page 923. [T. L. Duvall, Jr., and J. W. Harvey, National Solar Observatory, P.O. Box 26732, Tucson, Arizona 85726]

AMERICAN ASSOCIATION FOR THE ADVANCEMENT OF SCIENCE

Science serves its readers as a forum for the presentation and discussion of important issues related to the advancement of science, including the presentation of minority or conflicting points of view, rather than by publishing only material on which a consensus has been reached. Accordingly, all articles published in *Science*—including editorials, news and comment, and book reviews—are signed and reflect the individual views of the authors and not official points of view adopted by the AAAS or the institutions with which the authors are affiliated.

Publisher: WILLIAM D. CAREY

Editor: DANIEL E. KOSHLAND, JR.

Deputy Editors

PHILIP H. ABELSON (*Engineering and Applied Sciences*), JOHN I. BRAUMAN (*Physical Sciences*), GARDNER LINDZEY (*Social Sciences*)

Editorial Board

PHILIP W. ANDERSON, DAVID BALTIMORE, ANSLEY J. COALE, JOSEPH L. GOLDSTEIN, LEON KNOPOFF, SEYMOUR LIPSET, WALTER MASSEY, OLIVER E. NELSON, ALLEN NEWELL, RUTH PATRICK, VERA C. RUBIN, HOWARD E. SIMMONS, SOLOMON H. SNYDER, ROBERT M. SOLOW

Board of Reviewing Editors

JAMES P. ALLISON, QAIS AL-AWQATI, LUIS W. ALVAREZ, DON L. ANDERSON, KENNETH J. ARROW, C. PAUL BIANCHI, ELIZABETH H. BLACKBURN, FLOYD E. BLOOM, MICHAEL S. BROWN, JAMES H. CLARK, STANLEY FALKOW, NINA V. FEDOROFF, GARY FELSENFELD, DOUGLAS J. FUTUYAMA, THEODORE H. GEBALLE, STEPHEN P. GOFF, PATRICIA S. GOLDMAN-RAKIC, RICHARD M. HELD, GLORIA HEPPNER, JOHN IMBRIE, ERIC F. JOHNSON, KONRAD B. KRAUSKOPF, PAUL E. LACY, JOSEPH B. MARTIN, JOHN C. MCGIFF, MORTIMER MISHKIN, JOHN S. PEARSE, YESHIAWU POKKER, FREDERIC M. RICHARDS, JAMES E. ROTHMAN, RONALD H. SCHWARTZ, OTTO T. SOLBRIG, ROBERT T. N. THIAN, VIRGINIA TRIMBLE, GEERAT J. VERMEIJ, MARTIN G. WEIGERT, GEORGE M. WHITESIDES, WILLIAM B. WOOD, HARRIET ZUCKERMAN

Editorial Staff

Managing Editor: PATRICIA A. MORGAN
Assistant Managing Editors: NANCY J. HARTNAGEL, JOHN E. RINGLE
Production Editor: ELLEN E. MURPHY
News Editor: BARBARA J. CULLIFORD
News and Comment: COLIN NORMAN (deputy editor), MARK H. CRAWFORD, CONSTANCE HOLDEN, ELIOT MARSHALL, R. JEFFREY SMITH, MARJORIE SUN, JOHN WALSH
European Correspondent: DAVID DICKSON
Research News: ROGER LEWIN (deputy editor), RICHARD A. KERR, GINA KOLATA, JEAN L. MARX, ARTHUR L. ROBINSON, M. MITCHELL WALDROP
Administrative Assistant, News: SCHERRAINE MACK; Editorial Assistant, News: FANNIE GROOM
Senior Editors: ELEANORE BUTZ, RUTH KULSTAD
Associate Editors: MARTHA COLLINS, SYLVIA EBERHART, CAITILIN GORDON, WILLIAM GREAVES, BARBARA JASNY, STEPHEN KEPPLE, EDITH MEYERS, LOIS SCHMITT
Assistant Editor: LISA MCCULLOUGH
Book Reviews: KATHERINE LIVINGSTON, Editor; LINDA HEISERMAN, JANEY KEGG
Letters Editor: CHRISTINE GILBERT
Contributing Editor: RUTH L. GUYER
Production: JOHN BAKER, HOLLY BISHOP, KATHLEEN COSIMANO, ELEANOR WARNER, ISABELLA BOULDIN, SHARON RYAN, BEVERLY SHIELDS
Covers, Reprints, and Permissions: GRAYCE FINGER, Editor; GERALDINE CRUMP, CORRINE HARRIS
Guide to Scientific Instruments: RICHARD G. SOMMER
Manuscript System Analyst: WILLIAM CARTER
EDITORIAL CORRESPONDENCE: 1333 H Street, NW, Washington, D.C. 20005. Telephone: 202-326-6500. For "Information for Contributors" see page xi, *Science*, 28 June 1985.

Business Staff

Chief Business Officer: WILLIAM M. MILLER III
Business Manager: HANS NUSSBAUM
Assistant to Chief Business Officer: ROSE LOWERY
Business Staff Supervisor: DEBORAH JEAN RIVERA
Membership Recruitment: GWENDOLYN HUDDLE
Member and Subscription Records: ANN RAGLAND

Advertising Representatives

Director: EARL J. SCHERAGO
Production Manager: DONNA RIVERA
Advertising Sales Manager: RICHARD L. CHARLES
Marketing Manager: HERBERT L. BURKLUND
Sales: New York, N.Y. 10036: J. Kevin Henebry, 1515 Broadway (212-730-1050); SCOTCH PLAINS, N.J. 07076: C. Richard Callis, 12 Unami Lane (201-889-4873); CHICAGO, ILL. 60611: Jack Ryan, Room 2107, 919 N. Michigan Ave. (312-337-4973); BEVERLY HILLS, CALIF. 90211: Winn Nance, 111 N. La Cienega Blvd. (213-657-2772); SAN JOSE, CALIF. 95112: Bob Brindley, 310 S. 16 St. (408-998-4690); DORSET, VT. 05251: Fred W. Dieffenbach, Kent Hill Rd. (802-867-5581).
ADVERTISING CORRESPONDENCE: Tenth floor, 1515 Broadway, New York 10036 (212-730-1050).

To: Universal Science Foundation
Planet Utopia
Galaxy 7,073,216

From: Intergalactic Cultural Anthropology Expedition
Sections IV and XXI

Re: Anomalous Behavior Patterns

The expedition to examine subcultures and behavioral patterns on Planet Earth has uncovered an anomaly that defies explanation by the rational principles and Cartesian logic of our own planet. Sections IV and XXI traveled independently in separate cruise missiles and randomly selected inhabitants for analysis by our noninvasive probes; that is, acoustical eavesdropping and quantitative three-dimensional gossip.

At 3:00 p.m. Earth Time on 4 August, Section IV located an individual with a red face speaking into a telephone at the 10^3 -decibel level. The subject was using arcane linguistic techniques with multisyllable words such as "nincompoop" and "incompetent" occasionally interspersed with four-letter words not available in captured dictionaries. This species, which Section IV calls "Author," was complaining bitterly to something called *The Journal* that his manuscript had received no decision in 3 weeks despite (i) it represented better work than had ever appeared in that journal for the last decade and (ii) it was easily the best of his 176 papers, none of which had been treated so shabbily. It was ascertained that this work had taken 2 years to complete, 3 months to write up, and 1.5 months to be criticized by colleagues of the Author before being sent to *The Journal*. At 3:37 p.m., Section IV moved on to study behavior of one horse, two bullfinches, and a garter snake, all of which behaved in a classical and rational Cartesian manner.

At 4:00 p.m. on 4 August, Section XXI located an individual with a red face speaking into a telephone at the 10^{-3} -decibel level using multisyllable words such as "impossible" and "inconceivable" occasionally broken by signs, groans, and anguished looks at the ceiling. This species, which Section XXI calls "Referee," was apologizing to something called *The Journal* that (i) the manuscript that he had received for review had only recently arrived, having been delayed in the mails; (ii) he had in fact been studying the manuscript for weeks; and (iii) it had come during a period when he was out of the country, writing a grant, lecturing to 300 students, and lying flat on his back in the hospital being fed intravenously. He promised that the manuscript would be put in the mail "tomorrow" and complained that it was unreasonable of *The Journal* to expect a busy Referee such as he was to review a manuscript in less than 3 weeks. Section XXI was unable to obtain a definition of the word "tomorrow" before it moved on to study the viscosity of rush-hour traffic.

The anomaly in the case was not recognized until the two sections received laboratory reports of their remote-sensing DNA-sequencing determinations and optical surface imagery. The former indicated identical DNA sequences for the two species and optical photographs revealed identical clothing and facial characteristics. The sections concluded that it was theoretically astounding, but experimentally conclusive, that both expeditionary units had observed the same individual. No explanation for the subject's behavior could be suggested until Professor X173 discovered that there were two hemispheres of the brain of *Homo sapiens*. We conclude that a single body houses both species, but that the Author species uses the left hemisphere and the Referee species the right hemisphere, and there is no cross-correlative system. Professor X173 predicts that such split personalities will create wars, famines, and two types of Coca-Cola.

—DANIEL E. KOSHLAND, JR.

Amplification of a Novel *v-erbB*-Related Gene in a Human Mammary Carcinoma

Abstract. *The cellular gene encoding the receptor for epidermal growth factor (EGF) has considerable homology to the oncogene of avian erythroblastosis virus. In a human mammary carcinoma, a DNA sequence was identified that is related to v-erbB but amplified in a manner that appeared to distinguish it from the gene for the EGF receptor. Molecular cloning of this DNA segment and nucleotide sequence analysis revealed the presence of two putative exons in a DNA segment whose predicted amino acid sequence was closely related to, but different from, the corresponding sequence of the erbB/EGF receptor. Moreover, this DNA segment identified a 5-kilobase transcript distinct from the transcripts of the EGF receptor gene. Thus, a new member of the tyrosine kinase proto-oncogene family has been identified on the basis of its amplification in a human mammary carcinoma.*

C. RICHTER KING
MATTHIAS H. KRAUS
STUART A. AARONSON
*Laboratory of Cellular and
Molecular Biology,
National Cancer Institute,
Bethesda, Maryland 20205*

The oncogenes of the acute transforming retroviruses have counterparts, designated proto-oncogenes, that are conserved within the human genome (1). The human *sis* proto-oncogene encodes one major polypeptide chain of platelet-derived growth factor (PDGF) (2), and the *erbB* proto-oncogene appears to encode the receptor for epidermal growth factor (EGF) (3). A number of other proto-oncogenes, like *erbB*, share nucleotide sequence homology with the tyrosine kinase-encoding *src* gene (4). The fact that cellular receptors for several growth factors or hormones, including the EGF receptor, possess this enzymatic activity suggests that other proto-oncogenes may encode growth factor receptors as well.

Genetic alterations affecting proto-oncogenes of the tyrosine kinase family can play a role in spontaneous tumor development. A specific translocation affecting the *c-abl* locus, for example, is associated with chronic myelogenous leukemia (5). Several recent studies have also documented amplification or rearrangement of the gene for the EGF receptor in certain human tumors (6) or tumor cell lines (7). We now report the detection and partial isolation of a gene that is a new member of the tyrosine kinase family and is amplified in a human mammary carcinoma. This gene is closely related to, but distinct from, the EGF receptor gene.

The identification of additional members of some proto-oncogene families has emerged from findings of related sequences amplified sufficiently in a particular tumor to allow detection (8). Because of our interest in genes coding for

growth factor receptors, we used the *v-erbB* gene to probe for related genes that might be candidates for other receptor coding sequences. We selected moderate stringency hybridization conditions under which different oncogenes of the tyrosine kinase family did not cross-hybridize. Thus, any gene detected might be expected to have a closer relationship to *v-erbB* than to other members of the tyrosine kinase family.

DNA prepared from tissue of a human

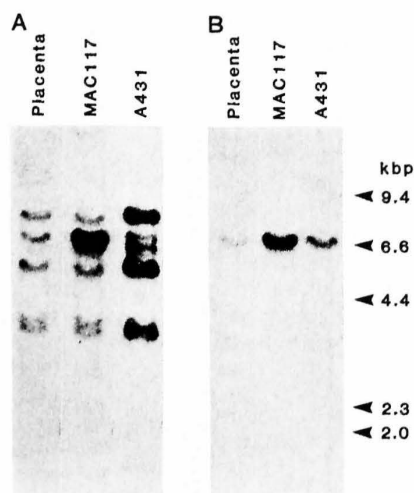


Fig. 1. Detection of *v-erbB*- and pMAC 117-specific gene fragments in normal human placenta, A431 cells, or human mammary carcinoma MAC117. DNA (15 μ g) was cleaved with Eco RI, separated by electrophoresis in agarose gels, and transferred to nitrocellulose paper (18). Hybridization to the 32 P-labeled probe (20) was conducted in a solution of 40 percent formamide, 0.75M NaCl, 0.075M sodium citrate, at 42°C (19). The *v-erbB* probe (A) was a mixture of the 0.5-kbp Bam HI-Bam HI fragment and 0.5-kbp Bam HI-Eco RI fragment of avian erythroblastosis proviral DNA. The pMAC117 probe (B) was a 1-kbp Bgl I-Bam HI fragment. After hybridization, the blots were washed first in 0.3M NaCl plus 0.03M sodium citrate at room temperature, and then in 0.015M NaCl, 0.0015M sodium citrate, and 0.1 percent sodium dodecyl sulfate at 42°C (A) or at 52°C (B). Hybridization was detected by autoradiography.

mammary carcinoma, MAC117, showed a pattern of hybridization (Fig. 1A) that differed both from that observed with DNA of normal human placenta and from that observed with the A431 squamous-cell carcinoma line, which contains amplified EGF receptor genes (7). In A431 DNA, four Eco RI fragments were detected that had increased signal intensities compared to those of corresponding fragments in placenta DNA (Fig. 1A). In contrast, MAC117 DNA contained a single 6-kilobase pair (kbp) fragment, which appeared to be amplified compared to corresponding fragments observed in both A431 and placenta DNA's (Fig. 1A). These findings were consistent with the possibility that the MAC117 tumor contained an amplified DNA sequence related to, but distinct from, the cellular *erbB* proto-oncogene.

To clone the 6-kbp fragment, we digested DNA from MAC117 with Eco RI, ligated it into bacteriophage λ gtWES, packaged it in vitro, and transferred it to *Escherichia coli* strain BNN45 by infection. A library of 4×10^5 bacteriophages was screened by plaque hybridization with radioactive *v-erbB* DNA. Ten of 14 hybridizing phages contained a 6-kbp Eco RI fragment. Figure 2 shows the physical map of one of these phages, λ MAC117, and pMAC117, a pUC12 subclone containing a 2-kbp Bam HI fragment of λ MAC117 that hybridized with *v-erbB* probes. The region of pMAC117 to which *v-erbB* hybridized most intensely was flanked by Acc I and Nco I sites. Human repetitive sequences were also localized (Fig. 2, region demarcated by arrows).

By digestion of pMAC117 with Bgl I and Bam HI, it was possible to generate a single-copy probe homologous to *v-erbB*. This probe detected a 6-kb Eco RI fragment that was amplified in MAC117 DNA and possibly increased in A431 cellular DNA relative to normal DNA (Fig. 1B). The sizes of the fragments corresponded to the amplified 6-kb Eco RI fragment detected in MAC117 DNA by means of *v-erbB* (Fig. 1A). Hybridization to Southern blots containing serial dilutions of MAC117 genomic DNA indicated an approximate amplification of 5- to 10-fold when compared to human placenta DNA.

The nucleotide sequence of the portion of pMAC117 located between the Nco I and Acc I sites contained two regions of nucleotide sequence homologous to *v-erbB* separated by 122 nucleotides (Fig. 3). These regions shared 69 percent nucleotide sequence identity with both the *v-erbB* and the human EGF receptor gene. The predicted amino

Explore Litigation Insights

Docket Alarm provides insights to develop a more informed litigation strategy and the peace of mind of knowing you're on top of things.

Real-Time Litigation Alerts



Keep your litigation team up-to-date with **real-time alerts** and advanced team management tools built for the enterprise, all while greatly reducing PACER spend.

Our comprehensive service means we can handle Federal, State, and Administrative courts across the country.

Advanced Docket Research



With over 230 million records, Docket Alarm's cloud-native docket research platform finds what other services can't. Coverage includes Federal, State, plus PTAB, TTAB, ITC and NLRB decisions, all in one place.

Identify arguments that have been successful in the past with full text, pinpoint searching. Link to case law cited within any court document via Fastcase.

Analytics At Your Fingertips



Learn what happened the last time a particular judge, opposing counsel or company faced cases similar to yours.

Advanced out-of-the-box PTAB and TTAB analytics are always at your fingertips.

API

Docket Alarm offers a powerful API (application programming interface) to developers that want to integrate case filings into their apps.

LAW FIRMS

Build custom dashboards for your attorneys and clients with live data direct from the court.

Automate many repetitive legal tasks like conflict checks, document management, and marketing.

FINANCIAL INSTITUTIONS

Litigation and bankruptcy checks for companies and debtors.

E-DISCOVERY AND LEGAL VENDORS

Sync your system to PACER to automate legal marketing.