



INTERNATIONAL APPLICATION PUBLISHED UNDER THE PATENT COOPERATION TREATY (PCT)

<p>(51) International Patent Classification <sup>6</sup> : <b>H04J 1/00</b></p>	<p><b>A2</b></p>	<p>(11) International Publication Number: <b>WO 98/47252</b> (43) International Publication Date: 22 October 1998 (22.10.98)</p>
<p>(21) International Application Number: PCT/US98/07228 (22) International Filing Date: 11 April 1998 (11.04.98) (30) Priority Data: 60/043,302 11 April 1997 (11.04.97) US (71)(72) Applicant and Inventor: STERN, Geoffrey [US/US]; 9 Apache Trail, Westport, CT 06880 (US). (72) Inventor; and (75) Inventor/Applicant (for US only): WEXLER, Gil [IL/IL]; Beerli Street 54, 64233 Tel Aviv (IL). (74) Agents: LERCH, Joseph, B. et al.; Darby &amp; Darby P.C., 805 Third Avenue, New York, NY 10022-7513 (US).</p>		<p>(81) Designated States: AL, AM, AT, AU, AZ, BA, BB, BG, BR, BY, CA, CH, CN, CU, CZ, DE, DK, EE, ES, FI, GB, GE, GW, HU, ID, IL, IS, JP, KE, KG, KP, KR, KZ, LC, LK, LR, LS, LT, LU, LV, MD, MG, MK, MN, MW, MX, NO, NZ, PL, PT, RO, RU, SD, SE, SG, SI, SK, SL, TJ, TM, TR, TT, UA, UG, US, UZ, VN, YU, ZW, ARIPO patent (GH, GM, KE, LS, MW, SD, SZ, UG, ZW), Eurasian patent (AM, AZ, BY, KG, KZ, MD, RU, TJ, TM), European patent (AT, BE, CH, CY, DE, DK, ES, FI, FR, GB, GR, IE, IT, LU, MC, NL, PT, SE), OAPI patent (BF, BJ, CF, CG, CI, CM, GA, GN, ML, MR, NE, SN, TD, TG).</p> <p><b>Published</b> <i>Without international search report and to be republished upon receipt of that report.</i></p>
<p>(54) Title: PERSONAL AUDIO MESSAGE PROCESSOR AND METHOD</p>		
<p>(57) Abstract</p> <p>A portable device is disclosed which permits the user to record, edit, play and review voice messages and other audio material which may be received from, and subsequently transmitted to, a remote voice processing or interactive voice response (IVR) host computer over a communication link. A preferred device contains its own power source, integrated circuitry and control buttons to permit the localized recording, editing, storage and playback of audio signals through a built-in speaker, microphone and removable memory card. The device also contains a standard RJ-11 telephone jack, modem chip set and DTMF tone decoder to permit the transmission and control of audio signals to and from a host computer. The device contains circuitry which permits it to transmit and receive audio signals at a rate substantially faster than originally recorded.</p>		

**FOR THE PURPOSES OF INFORMATION ONLY**

Codes used to identify States party to the PCT on the front pages of pamphlets publishing international applications under the PCT.

AL	Albania	ES	Spain	LS	Lesotho	SI	Slovenia
AM	Armenia	FI	Finland	LT	Lithuania	SK	Slovakia
AT	Austria	FR	France	LU	Luxembourg	SN	Senegal
AU	Australia	GA	Gabon	LV	Latvia	SZ	Swaziland
AZ	Azerbaijan	GB	United Kingdom	MC	Monaco	TD	Chad
BA	Bosnia and Herzegovina	GE	Georgia	MD	Republic of Moldova	TG	Togo
BB	Barbados	GH	Ghana	MG	Madagascar	TJ	Tajikistan
BE	Belgium	GN	Guinea	MK	The former Yugoslav Republic of Macedonia	TM	Turkmenistan
BF	Burkina Faso	GR	Greece	ML	Mali	TR	Turkey
BG	Bulgaria	HU	Hungary	MN	Mongolia	TT	Trinidad and Tobago
BJ	Benin	IE	Ireland	MR	Mauritania	UA	Ukraine
BR	Brazil	IL	Israel	MW	Malawi	UG	Uganda
BY	Belarus	IS	Iceland	MX	Mexico	US	United States of America
CA	Canada	IT	Italy	NE	Niger	UZ	Uzbekistan
CF	Central African Republic	JP	Japan	NL	Netherlands	VN	Viet Nam
CG	Congo	KE	Kenya	NO	Norway	YU	Yugoslavia
CH	Switzerland	KG	Kyrgyzstan	NZ	New Zealand	ZW	Zimbabwe
CI	Côte d'Ivoire	KP	Democratic People's Republic of Korea	PL	Poland		
CM	Cameroon	KR	Republic of Korea	PT	Portugal		
CN	China	KZ	Kazakstan	RO	Romania		
CU	Cuba	LC	Saint Lucia	RU	Russian Federation		
CZ	Czech Republic	LI	Liechtenstein	SD	Sudan		
DE	Germany	LK	Sri Lanka	SE	Sweden		
DK	Denmark	LR	Liberia	SG	Singapore		
EE	Estonia						

5                   **PERSONAL AUDIO MESSAGE PROCESSOR AND METHOD**Field of the Invention

          The present invention relates generally to dictation  
10 and audio communication devices and, more particularly,  
concerns a method and portable apparatus for audio  
communication, including the recording and editing of voice  
mail and audio content and its transmission and reception over  
a private or public network, such as the Internet, using common  
15 electrical communication media or data links.

Background of the Invention

          All electronic message systems, with the exception  
of voice-mail, have intermediate devices or storage media  
20 whereby data may be transferred, preferably at a high  
transmission rate, over a standard communication link and  
stored in a storage medium or onto an unattended device for  
later off-line access, review and editing by the intended user.

          In the case of a facsimile transmission, an image is  
25 scanned by the transmitter and then transmitted and ultimately  
printed at a remote site for off-line utilization by the  
intended receiver. In the case of electronic mail, data is  
generated on a computer and then transmitted and stored either  
directly on the intended user's unattended computer or on a  
30 central host computer linked to a network of computers for  
subsequent retrieval by the intended user. The most common  
networks are Local Area Networks (LAN), a Wide Area Networks  
(WAN), and public networks, such as the Internet, or private  
35 networks. When the intended user accesses his computer, either  
the E-mail is already resident, or he finds a message displayed



in a graphic editor indicating that he has mail and how he can retrieve it. Once the E-mail is retrieved, it likewise may be read, reviewed and manipulated by the intended user off-line on the users' computer. Alternately, it may be outputted to  
5 a printer, providing the user a hard copy for review at his convenience.

When a facsimile machine is unavailable, a facsimile may be transmitted to a computer or handheld, paperless fax machine for off-line and independent review by the recipient,  
10 such as Reflection Technology, Inc.'s FaxView personal fax reader.

Utilities exist for both facsimile and E-mail messages, whereby messages may be selected from a host by an authorized user for subsequent transmission to the user's E-mail address or unattended facsimile machine. See, for  
15 example, Duehren et al., U.S. Patent No. 4,918,722.

Recently, with the widespread and growing usage of the Internet and, more particularly, with the growing popularity of WEB sites offering published material in the form  
20 of HTML (Hyper Text Markup Language) documents, utilities have been created which permit such files to be selected for subsequent off-line access and independent review by fax. See, for example, FactsLine for the Web, by Ibex Technologies, Inc. Such a utility makes the large volume of information and  
25 graphics offered over the Internet, available to users who either do not have access to a computer connected to the Internet, or wish to limit the amount of time spent on-line.

A large percentage of potential users do not have access to the Internet, or even if they do; may be traveling;  
30 may not have access to their computers; or may not wish to spend time booting their computer and waiting for Web site graphics (utilities such as Web-On Call Voice Browser by Netphonic Communications, Inc. have been introduced which permit users to access the Internet, in response to voice  
35 prompts), to navigate to a document or E-mail of interest, to identify a document by number and to have a selected document read in real-time over the phone using text synthesizing voice and faxed back or sent as an e-mail attachment.

Similarly the widespread use of the Internet and  
40 heavy traffic to particularly popular Web sites or during

**SUBSTITUTE SHEET (RULE 26)**



particular peak usage times has created a demand for utilities called off-line browsers which permit Internet users to "subscribe" to particular Web sites from which their computer then automatically retrieves material during off-peak hours, 5\_ categorizes and organizes new and updated information and permits the user to review it off-line using his browser of choice (e.g. FreeLoader by FreeLoader, Inc.).

Similarly, subscription services have been introduced which permit voice mail to be sent to an e-mail address and 10 also permit audio content offered on a Web site to be updated both by way of a standard phone call to an interactive voice response (IVR) system (e.g. "Amail" and "Dialweb" by Telet Communications).

15 Recently, voice processor system manufacturers have established a work group consisting of more than 60% of the world's voice mail system market to develop an Interoperability standard for a Voice Profile for Internet Mail (VPIM). TCP/IP (Transmission Control Protocol/Internet Protocol) has been 20 selected as the vehicle of conductivity, because of its globally accessible points of contact, primarily on the Internet, and because of its use of commonly recognized transmission protocols, specifically simple message transfer protocol (SMTP) and Multipurpose Internet Messaging Extension 25 (MIME) as the core of VPIM. (see April 29 1996 issue of Business Wire). Once implemented, interoperable standards such as VPIM will permit voice mail users to send and receive their voice messages over the Internet or an Intranet as easily as they can now do so over the telephone.

30 In addition to voice messaging and audio e-mail over the Internet, the recent introduction of proprietary client server software systems permits users with conventional multimedia personal computers and voice grade telephone lines to browse, select, and play back audio or audio-based 35 multimedia content in real-time streams (RE) or download on-demand (REM). An interested user need only download software from the content provider's Web site to access such audio content (e.g. Progressive Network's RealAudio Player and

Server). Systems such as this represent a real breakthrough, since in the past, delivery of audio by conventional on-line methods downloaded it at such low rates that acquiring the information took five times as long as the actual program.

5 This required the listener to wait 25 minutes before listening to 5 minutes of audio.

As a result of the availability of streaming audio over the Internet, a number of companies have introduced Internet telephone products which permit users having multimedia computers

10 programmed with proprietary software to talk in real time over the Internet (see Voclatec). Such a system is useful over long distances when users can access a local Internet access point

15 or point of presence, making a long distance call into a local call.

Similarly, as a result of streaming audio over the Internet, content providers are able to broadcast live audio

20 from a Web site (e.g. AudioNet by Cameron Audio Networks).

Recently a standard-based implementation for communication over the Internet has been introduced, and supported by Intel and Microsoft, which makes use of the DSP

25 Group's TrueSpeech G.723 compression technology. This uses an advanced algorithm that results in excellent voice quality, despite a high compression ratio, and operates at 6.3 kilo bits per second (kbps) and 5.3 kbps with compression ratios of 20:1 and 24:1, respectively. It also includes silence compression

30 which can bring the effective rate down to less than 3.7 kbps at 28.8 kbps modem speed. This would permit the transmission of audio at a rate of 1:7.78 or 10 minutes of audio in 1.3 minutes.

Using Texas Instrument's C80 DSP chip using a V.34

35 modem running at 28.8 kbps, a transmission rate of audio at a rate of 10:1 (ten minutes of speech in 1 minute of transmission) can be achieved with telephone grade sound quality.



From the above, it is apparent that while the transfer of data, graphics and audio messaging and content over a network has become more widespread and convenient, this growth has also highlighted certain historic shortcomings associated with the transfer and input/output of voice messaging and audio content. As voice messaging and audio content become more available, the deficiency created by the lack of an intermediate device or storage medium for such audio will become more pronounced.

For both E-mail and facsimile, use of a telephone link is limited to the transmission of the data and the transmission of control codes for that data. With the growth and widespread usage of network computing, the telephone link for e-mail and facsimile (e.g. PASSaFAX from RADLinX) is further limited to a hook-up to a local point of presence to access the network. Both e-mail and facsimile contain content which may be outputted by the intended user to a printer, which permits the user to take a hard copy of the material with him for review at his convenience, while he is away from his office or traveling.

In sharp contrast, voice messages and voice-text are currently recorded by the sender and retrieved by the intended recipient primarily in real-time and on-line. At best, a user can use his multimedia notebook computer to record and access a stored audio file or streaming voice file. Off-line access to audio is limited to downloading audio files onto a multimedia computer and having the sound card equipped computer play the audio. However, a multimedia computer, with its screen, keyboard and multipurpose processing capability, is hardly the size of a traditional dictation device or voice recorder. This dependence on a telephone hand set or multimedia computer to create and access audio is analogous to requiring a recipient of a facsimile to view, edit and prepare a facsimile only while in close proximity to a facsimile machine or fax enabled computer. Not being able to prepare, review and access network based voice mail other than in real-time from a telephone hand set or off-line from a multimedia



computer, severely limits the desirability of integrating voice messaging and audio content into network based messaging. There exist no dedicated and portable devices to store network based voice messaging and likewise there exists no method or utility to scan and select personal voice messages or public announcements from a host connected to a network for subsequent high speed transmission to a device for subsequent off-line review by the user.

The only dedicated device which permits the user to review his/her voice messages off-line is the Telephone Answering Device (TAD) which is primarily a residential or small-office, home-office (SOHO) appliance which uses digital recording technologies to replace the standard functions of a traditional tape-based answering machine. The TAD, plugged into both an electrical outlet and phone jack is not portable, so the user must either be within hearing distance of the TAD's speaker or, using a telephone, may call in to retrieve his/her messages on-line and in real-time. While traditionally, TAD's have offered very limited outbound messaging capabilities, whatever outbound messaging was offered required that the owner record any outbound message (e.g. a general greeting or caller-specific/mail box-specific message) either from within range of the microphone on the TAD or from a real-time telephone call.

Voice messaging, whether network based or TAD based, limited to on-line and real-time transmission and physically requiring access to a telephone set, TAD or multimedia computer is unfortunate, particularly because voice communication inherently does not require any external hardware or instrumentation other than the mouth and ear for a human being to create or access it. Speech is the most natural and self-sufficient form of communication. Speech is hands-free requiring neither writing instrument, keyboard, screen, dedicated vision or hand-to-eye coordination on the part of the user to input or retrieve. That voice mail is nonetheless so widely used is more a function of speech's unique characteristics than a vote of approval on the adequacy of the current technology. Similarly, that so many innovative

utilities have been introduced which make audio and voice available over public and private networks is a commentary on the compelling nature of audio and voice for content, messaging and issuing commands and only underscores the need to make  
5 audio and voice more easily available. Until such time that voice messaging and audio content are made more accessible, many of the network based audio utilities mentioned above will remain novelties for technophiles.

Much has been said about Computer Telephone  
10 Integration

(CTI) and the Universal Mail Box, where network based messages and content may originate in any medium and by any input device of choice and, likewise, may be retrieved in any medium or by any output device of choice. Faxes can be accessed as data on  
15 a computer screen, data can be accessed as a fax or text-to-speech audio-text and, as automatic speech transcription utilities become more capable, audio will be accessed as printed text in email or fax. However, as long as audio does not have an input/output device of choice other than a  
20 telephone handset or screen/keyboard based multimedia computer, its desirability as a medium of choice will likewise be severely limited.

Since speech is a direct record of the user's voice,  
25 the urgency, meaning and emotional content is never lost. Similarly, since so much data is first generated in voice and is only later transcribed to text or data, info-text should be the preferred medium for timely data on meetings, speeches and radio broadcasts. Ideally, voice mail should be the preferred  
30 mode of communications when traveling, when communicating through time-zones and when accessing timely information which originated in the spoken word (e.g. minutes of a meeting or lecture). Voice text (i.e. data or text which is spoken by a computer or pre-recorded by a human) should be the preferred  
35 format for messaging information to be accessed where use of motor skills and vision are not convenient or are impaired such as when driving, operating equipment or engaged in a leisure activity.



The current use of a telephone to access voice messages directly has significantly limited the potential utilization of voice messaging. Real-time transmission of voice messages and info-text makes the recording and retrieval of voice mail, especially from long distances, very costly. The cost and inconvenience involved means that one cannot compose and review voice mail and info-text in a cost efficient manner and at one's own pace. One is limited to a location and situation in which a telephone is accessible and, in the case of a wireless communication link, to a place where wireless transmission is both possible and desirable.

The application of multimedia computers to compose and review voice mail has had little effect on making voice messaging more convenient since the use of keyboards, pointing devices and screens is hardly hands-free, nor is the size and expense of a multimedia computer conducive to widespread use and transportability. In its present state, voice mail is limited to short messages between individuals wishing to communicate in a more substantive fashion at another time (telephone tag). Voice "mail" becomes limited to voice "messaging" because of the cost and inconvenience to both the sender and receiver of listening to lengthy, content-rich "mail" over the phone or at a multimedia computer". Furthermore, the cost of transmitting audio signals in real-time, through a direct communication link to the user's voice processor or TAD, and only when the user has access to a telephone (as opposed to un-attended recording at off-peak hours) make more commercial use of info text (recorded instructions, recorded travelogues, speech transcripts, article or books on "tape" etc.) and other innovative advertiser/subscriber supported uses of voice-text unfeasible.



Recently, U.S. Pat. No. 5,444,768, issued to Charles Lamer et al., and assigned to International Business Machines Corp., and U.S. Pat. No. 5,359,698, issued to Shmuel Goldberg et al. and assigned to Espro Engineering both disclose a portable computer device for audible processing of audio messages stored at one or more remote central message facilities. The Lamer et al. system permits the user to record and playback, transmit (upload) and receive (download) voice messages from a central message facility and over a communication link and onto a portable device; however, the Lamer et al. system requires that a direct telephonic link be established between the portable device and one or more remote central message facilities. The Lamer et al. and Goldberg et al. systems enable the portable device to individually access a traditional, closed, expensive, proprietary voice processing system through a direct communication link. The Lamer et al. and Goldberg et al. systems do not provide a commercially feasible solution for accessing voice mail other than by way of a long distance call to a central message facility. The expense associated with such a long distance toll charge would make extended usage of the Lamer et al. system prohibitive. In addition, the Lamer et al. system requires that a user contact one or more remote central message facilities to retrieve and transmit selected audio files. The inconvenience associated with such a polling procedure nullifies the convenience provided by the system.

Similarly, the Lamer et al. system does not provide for a method by which the user may browse available audio content nor for a method to select audio files from a menu for subsequent retrieval by the portable computer device. Similarly, the Lamer et al. system does not provide for a utility whereby the user may remotely access a central server linked to a network of servers to download control code, search a personal user group or public database for an address other than by way of initiating a dedicated "training" mode by either coupling the portable computer device directly to a computer or by way of detecting and recording DTMF tones generated locally by a standard touch-tone telephone device. Since a

typical user's mail box utilities are handled on his network e-mail server and modified regularly in the course of his sending and receiving e-mail, such a dedicated training session for the portable computer device is impractical. Similarly, 5 since new audio server platforms, utilities and compression schemes are being introduced regularly, there is a need for a dynamic and transparent method for updating both control codes and address books without the need for a dedicated training session.

10 Broadly, it is an object of the present invention to provide an Internet-ready dictation and voice message recording/reviewing device and method which enable a user to compose and review voice mail off-line, from any location, while engaged in any activity, at a leisurely pace, without 15 incurring telephone toll charges and whether a communication link is presently accessible or not.

It is also an object of the present invention to use a 20 telephone link preferably to a local network access point primarily as a communications link for high speed transmission of pre-recorded material and control codes to facilitate that transmission, thereby limiting the use of a telephone or a multimedia computer and telephone line for voice messaging as a recording or playback device.

25 It is also an object of the present invention to provide a protocol whereby pre-message handshaking occurs between a dictation and voice message recording/reviewing device and a network server to conform the digitized voice signal to one of the standard voice compression protocols and 30 TCP/IP protocol stacks to facilitate a high speed transmission of voice messages over the network.

It is another object of the present invention to provide a portable and dedicated voice capable network (Internet) access device which enables the user to record, edit 35 and play audio files which may be transmitted and/or received over a public or private network.

It is also an object of the present invention to provide a portable access device and method which permit the



owner of a specially modem-configured Telephone Answering Device (M-TAD) to access and download compressed voice message files directly from the TAD's digital memory onto a portable voice message record/playback device either by way of a direct  
5 cable connection to the TAD or by a telephone link.

Providing such a portable access device and method would permit TAD owners to encourage inbound callers to leave more robust and data-rich audio messages on their TAD as well as permit TAD owners to subscribe to audio content which could  
10 be regularly delivered to their TAD in compressed digital form and downloaded onto the present invention for play-back and review at a convenient time and place. This would also permit TAD owners, while away from their home or office to have their portable dictation and voice message recording/reviewing device  
15 establish a telephone link with their TAD and economically and automatically retrieve all stored messages and update all outgoing messages (e.g. general and caller specific greetings), with all stored messages and outbound greetings being transmitted in digitized and compressed format.

The invention provides a low cost, portable recording and playback dictation and voice message recording/reviewing device which permits the user to record, edit, play and review voice messages including audio-text, text-to-speech and other audio material which may be received from and subsequently  
25 transmitted to a remote host computer located on a public or private network over a communication link such as the public switched telephone system.

A preferred device contains its own rechargeable power source, integrated circuitry and control buttons to  
30 permit the localized recording, editing, storage, playback and transcription of audio signals through a built-in speaker, microphone or plug-in headset, foot pedal and removable memory card. The device also contains a standard RJ-11 telephone jack, modem chip set (or software), or a removable PCMCIA  
35 connector to which a standard or wireless modem card could be connected; and a DTMF tone decoder to permit the transmission and control of audio signals to and from a host computer connected to a public or private network. The device contains



circuitry which permits it to transmit and receive audio signals at a rate substantially faster than originally recorded.

A preferred device also contains a processor which  
5 includes the necessary terminal emulation to permit a network user to access a network directly from a local point of access, such as an Internet service provider's (ISP) point of access and shell account, using a standard protocol such as SMTP (Simple Mail Transfer Protocol), Post Office Protocol (POP3)  
10 and MIME (Multipurpose Internet Mail Extensions) in the TCP/IP suite to review, select and retrieve audio files that have been sent to the user's e-mail address (or similarly, data/text files which can be translated into voice), and to download and transmit such files.

15 A preferred device also contains a standard or touchscreen display and software which permits the user to display a similar graphical editor for composing and reading e-mail messages as is displayed on his computer screen when  
20 accessing his e-mail, so that the user can scroll through his e-mail messages, selecting those audio files he wishes to download and selecting text messages he wishes to have converted, either by the network server or at the device, into an audio format (text-to-speech).

A preferred device also contains: a cradle into which  
25 the device may be placed, the cradle having ports which enable it to be connected to a power source to recharge the device's batteries; a phone jack to enable it to establish a communication link; and a serial or parallel port on a computer for downloading and uploading files directly to the computer  
30 or for receiving "redirected" files.

A preferred device also contains a language user interface capable of recognizing and responding to speech with speech. Such an interface includes speaker independent functions but also permits speaker adaptation which allows the  
35 personal device to adjust to the peculiarities of the user's voice or pronunciations and thus improve accuracy. This speaker adaptation is achieved through a protocol which allows the system to adapt to the users voice through the repetition

of a set of sentences prior to first use of the device (See Lernout & Hauspie Speech Product's [LHSP] asr1000 product line). The language interface includes a vocabulary builder which permits the user to extend the vocabulary including  
5 special terms and proper nouns to the speech recognition application (see LHSP Lextool™), a user template which enables the user to create words which the device will associate with user defined commands e.g. "home" could be associated with an e-mail address (LHSP asr 200 product line), alphabet  
10 recognition for spelling an e-mail address as well as background noise tolerance and speech at a distance software which improve the accuracy of the language user interface even in an automobile, airplane or public place and even if the user is not wearing a headset. (see LHSP)

15 A preferred device also contains public-key encryption technology designed to ensure reliable and secure transmission of sensitive information by encrypting and decrypting the message data and by authenticating the sender's identity by using a secure digital or voice signature.

20 A preferred device also contains a text-to-speech utility which permits the user to download data not already converted to speech by a network server and to do so at the device.

A preferred device also contains a bar code reader  
25 which permits the user to scan a printed bar code associated with printed matter such as a news article, a map, a menu of available audio files or in a travel guide which would give the device all the information it needs including network server address, file location and file ID so that the audio file  
30 associated with the printed matter could be automatically retrieved from a network such as the Internet.

A preferred device also contains a bar code reader which permits the user to scan a printed bar code associated with printed matter such as a news article, a map, a menu of  
35 available audio files or in a travel guide which would give the device all the information it needs to play a file from a previously retrieved group of audio files (such as described in Goldberg et al.).



A preferred device also contains an Infrared interface using a standard such as the Infrared Data Association (IrDA) for high speed local wireless transmission (e.g. 1.2 Mbps and 5- 4Mbps) of audio files and control codes between the device and a public phone, kiosk or the users' computer.

A preferred device also includes a software utility called an off-line browser which programs the device to 10 automatically retrieve audio files from the network during off-peak hours to which the user has subscribed, or from selected Web sites which have new audio material available, or from e-mail addresses that the user has programmed the off-line browser to retrieve.

15 A preferred device also includes a software utility which enables the user, by way of a graphical screen based interface or by way of audio prompts, to browse either network databases such as those located on the Internet for addresses and/or sites from which to receive and send audio files.

20 A preferred device also includes a software utility which creates a graphic interface and memory for the user to access, refresh and/or download his E-mail address book containing the E-mail addresses of individuals and groups for which he may wish to prepare and to which he may wish to send 25 audio files. Such a utility would automatically synchronize the data in the dictation and voice message recording/reviewing device to the data contained in the user's E-mail server account.

A preferred device also includes a software utility 30 which creates a graphic interface and memory for the user to organize his/her telephone numbers, E-mail addresses, calendar, reminders and appointments including a clock and alarm function with an option to choose between a simple audible sound alarm or a programmed voice message alarm (e.g. "call home").

35 A preferred device also includes a software utility which enables the user to download proprietary client server software systems and upgrades and newly introduced standards for low bit rate speech compression made available over a



public or private network such as the Internet to insure that the device may use the latest state-of-the-art audio compression software.

A preferred device also includes a software utility  
5 which enables the user to download proprietary client server software systems and upgrades and newly introduced standards which enable the device to receive highly compressed and/or streaming audio files containing voice content including, but not limited to application program interfaces (APIs) which  
10 enable the device to be used as a portable Internet Phone appliance to conduct a real-time, two-way, full-duplex voice conversation using a local connection to the Internet.

A preferred device also includes a software utility which extends the functionality of a Web program run from a Web  
15 browser and operate on data such as audio data as it flows in the user's PC, permitting the user to redirect audio files by the communication port directly to the device seated in a cradle and connected to the serial or parallel port. Alternatively, this could be achieved though OLE (Object  
20 Linking and Embedding) enabled Web software which when activated by the user by pressing a designated key such as print, redirects audio files directly to a special "printer" driver dedicated for the device. The utility permits users who are browsing the Web on their computers to download audio files  
25 directly to their personal audio servers for later access, without having to transfer from their hard disc.

A preferred device also includes a software utility which enables the user to select E-mail messages and request that the messages be converted from text-to-speech by an  
30 appropriate text-to-speech conversion application available to the network, and only subsequently digitized and transmitted as digitized and compressed audio file.

The invention also relates to a method and software utility using DSVD (Digital Simultaneous Voice/Data) and/or the  
35 VoiceView protocols (Radish Communications Systems, Inc.) which would enable the user, once connected to a communication link to be able to transfer and receive audio files directly into a dictation and voice message recorder Device simultaneously

or, alternatively, with the user processing, and/or receiving and transmitting other related or unrelated data to and from the network or conversely, while the user is talking on the phone. The use of these voice/data protocols would permit the  
5- dictation and voice message recording/reviewing device user to request audio files in response to voice prompts spoken in digitized streaming or analog voice, to respond by spoken responses, keypad entries or DTMF tones and to transfer those files in high speed data mode during the same phone connection.

10 The invention also relates to a method and software utility which permit the scalability of digitized audio files in order to conform with network server requirements and or user preferences. This would enable the server to demand or the user to request a lower compression rate or slower  
15 transmission speed in order to have higher fidelity for the audio file requested, and vice versa.

It is a feature of the present invention that a recording device may be left connected to a communication link and programmed to dial into and to connect to a local network  
20 access point at off-peak hours when telephone rates are lowest and when excess capacity on incoming lines is available. The recording device is programmed to search the network for audio files to which the user has a subscription, new audio files available from Web sites to which the user has programmed the  
25 device to look, and for audio mail sent to the user from selected E-mail addresses.

It is a feature of the present invention that an interface port, such as a standard RJ-11 telephone jack, is provided so that the recording device may be connected between  
30 a telephone set, computer, cellular phone or personal digital assistant and a communication link to enable the user to select and retrieve voice files while using any of the above devices.

It is also a feature of the present invention that circuitry is provided for the digital conversion and  
35 compression of the analog voice signals recorded in the memory of a dictation and voice message recording/reviewing device to permit high density storage and high speed transmission of digitized voice. Similarly, circuitry is provided for the



analog conversion and natural sounding playback of previously stored or received digitized voice.

It is also a feature of the present invention that there may be provided a public terminal e.g. in a manner similar to an automated teller machine and located at places such as airports and tourist sites where a user could connect his recording/reviewing device and select voice messages and audio-text to be retrieved and transmitted directly by the recording/reviewing device.

#### Brief Description of the Drawing

The foregoing, as well as the other objects, features and advantages of the present invention will be understood more completely from the following detailed description of a preferred embodiment, with reference being had to the accompanying drawing, in which:

Figure 1 is a schematic block diagram of a preferred personal audio message processor embodying the present invention; and

Figures 2-7 (Figure 2 comprises Figures 2a and 2b) are flow charts illustrating how certain processing is performed in the apparatus of Fig. 1.

#### Detailed Description

Figure 1 is a schematic block diagram of a presently preferred Personal Voice Server (PVS) system 10 embodying the present invention. PVS system 10 broadly comprises five main parts: a highly integrated DSP/RISC integrated chip 11 (DSP stands for Digital Signal Processor and RISC stands for Reduced Instruction Set Computer); a Telecom/Audio Codec 17; a memory such as SDRAM 12 and/or Flash Memory 13 coupled to the DSP chip; peripherals such as a microphone 26, a speaker 18, a touchscreen/display LCD 19, an infrared I/O 21 and a Barcode reader 15. Operating system software is also provided to



manage the DSP to handle modem routines such as V32bis, V34 etc., voice recognition, echo cancellation and speech synthesis; software also controls the system via the RISC part of chip 11. Although the embodying device 10 is referred to  
5 as a voice server, it should be clear that it is equally useful for other types of audio, including music.

The DSP chip is preferably a Philips Semiconductor PR31100 chip, which contains a MIPS R3000 RISC CPU core with 4 Kbytes of instruction cache and 1 Kbyte of data cache, plus  
10 various integrated functions for interfacing to numerous system components and external i/o modules. The chip also has a hardware multiply/accumulate unit to perform DSP functions, such as a software fax/modem which eliminates the need for an external modem chip set. However the chip also has a UART  
15 (Universal Asynchronous Receive Transmit) interface 22 (shown separately), which permits the device to be connected to an external modem or other device (such as a modem equipped Telephone Answering Device) through a conventional RS232 serial connector 23.

20 The PR31100 also contains multiple DMA (direct memory access) channels and a high-performance, flexible Bus Interface Unit (BIU) for providing an efficient means for transferring data between external system memory, cache memory, the CPU core, and external I/O modules. The PR31100 also contains a  
25 System Interface Module (SIM), which provides integrated functions for interfacing to various external I/O modules, such as a liquid crystal display (LCD) 19, an infrared I/O module 21, and the Codec 17.

Codec 17 is preferably a Philips UCB 1100 single chip  
30 integrated mixed signal audio and telecom codec, which handles most of the analog functions of the system, including the sound and telecommunications codec (analog/digital coding and decoding) functions and touchscreen analog-to-digital conversion, ISDN/high-speed serial, infrared, and wireless  
35 peripherals. The high-speed serial interface 14, although shown separately in Fig. 1, is actually part of the UCB1100. The chip has a single channel audio codec which is designed for direct connection of a microphone and speaker (i.e. components

16 and 28 are actually part of the UCB1100). The built-in telecommunications codec can be connected directly to a conventional RJ-11 jack 20 for connections to a telephone line.

For a more complete understanding of the embodiment of Fig. 1, data sheets for the PR31100 and UCB1100 are attached and are incorporated in this description by reference.

The operating systems software for the PR31100 is preferably Eden OS version 2.0, commercially available from the Eden Group Limited of Cheshire, England. This operating system is specifically designed to support the PR31100 (also known as DINO) and the UCB1100 (also known as BETTY). A data sheet for the Eden OS is attached, which describes the software support and the drivers provided by the operating system. This data sheet is incorporated in the present description by reference.

Memory 12, 13 is used to store messages and to hold temporary data. The flash memory is configured according to the amount of permanent programs required, including operating system (O/S) and application software and also to store some of the recorded messages. Typically, audio compression provided in the PR31100 will result in a data bandwidth of less than half a Kbyte per second (i.e. 1Mbyte of memory will provide an hour of audio.)

A microphone 26 and speaker 18 are selected based on quality and size.

Flow diagrams are presented in Figs. 2 - 7 to describe the operation of retrieving messages over the Internet and transmitting them to and from the PVS as well as the various operational options for dialing, receiving data from a given server address in the Internet, storing, screening, retrieving, transmitting and playing messages to/from the PVS. These operations include receiving compressed messages in digital form and audio signals in analog form bi-directionally from speaker/microphone and phone connection.

Figures 2a and 2b comprise a flow chart illustrating how the PVS connects to a location on the Internet by Transport Protocol and how the PVS gets all data relating to its Web/e-mail site (e.g. HTML language displaying information) and receives/stores messages (audio, data etc.) that were sent



using either a proprietary or de-facto standard (e.g. highly compressed audio at 2.5 kbps).

The operation depicted in Figs. 2a and 2b is run concurrently by the real-time kernel of the DSP/RISC (discussed further below with reference to Fig. 3). It enables multiple tasks to be run and executed in Parallel. Operation of the main task begins at block 200. Accessing a site and storing or receiving stored messages is run concurrently with other tasks. These tasks can be local to operate the PVS, or other tasks such as the operation of the bar-code reader, voice synthesizer, voice recognition, or to access other Web sites by PPP at the same time.

At block 202, a test is performed to determine whether the desired operation is connection to a network access provider via an out-bound call (at block 210). If not, the modem, in response to a ring, answers the call, completes its handshake procedure, and begins receiving information (block 204). Data bits from the modem are received by DSP chip 11 at block 220. The DSP chip decodes the incoming data at block 230.

At block 240, a test is performed to determine whether the desired operation is to decode an HTML site. If not, control transfers to block 340. Otherwise operation continues at block 250, where the display of the site page begins. A test is performed at block 260 to determine whether the mode of operation is interactive or automatic. In the interactive mode, the user of the PVS has to browse and select the desired operation to be completed. In automatic mode, the keyword(s) to retrieve audio or other messages are searched for and activated automatically to get the compressed data. If the test at block 260 senses the interactive mode, control is transferred to block 110 in Fig. 2b. If not, automatic browsing is done starting at block 270 to search for a highlighted keyword symbol. At block 280, a test is performed to determine whether the keyword constitutes a request for a previously digitized message and if so, the data compressed by FTP protocol is received by the PVS at block 290. If the test

at block 280 results in a "no", control transfers to the block 310.

At block 310 a test is performed to determine whether no more messages exist, and, if so, control returns to block 100. Otherwise, a test occurs at block 320 to determine if the keyword constitutes a request for a place to store local messages at the web server. If so, this data, such as a compressed audio messages, is transmitted from the PVS to the web site (block 330). If not, control returns to the start (block 100). The process is continued until there are no other stored messages for the PVS owner at this Web site.

At block 340, a test is performed to determine whether this cite is utilizing the FTP protocol language. If so, a message is retrieved utilizing FTP (block 360), and it is stored at block 380 and control is transferred to block 120 in Fig. 2b. If it is determined at block 340 that FTP protocol is not being used, a test is performed at block 340 to determine whether or not a recognized access language is being received. If so, a message is retrieved at block 360 utilizing the recognized access language and is then stored at block 380. Control is then transferred to block 120 in Fig. 2b. If a recognized access language is not found at block 350, the user is notified at block 370 and control returns to block 100.

If it was determined at block 260 that the mode is interactive, control is transferred to block 110 in Fig. 2b. At block 112, the keywords in the web page are selected and, at block 114 HTML interpretation is activated to locate the messages in the pool. At block 116, messages are then sent and/or received and control is returned to block 100 in Fig. 2a.

Following block 380, where data was stored, preferably in compressed form, control is transferred to block 120 in Fig. 2b. Any data which is stored causes the creation of data in a flat database (block 120), which may be searched to locate the data at a later time. In case the message is an audio message, it is decompressed and played at the same time that it is transmitted by FTP protocol. The test at block 122 determines whether such action is necessary for the current



message and, if so, decompression and the audio synthesizer are activated (block 124), the database is updated to reflect that the message is ready to be synthesized, and control is returned to block 100. If the message is not to be decompressed and played, block 122 transfers control to block 128, where a test is performed to determine if the message is to be sent to the web server and, if not, control is returned to block 100. If the message is to be sent to the web server, it is sent by FTP at block 130, and the user is notified upon completion of the transfer (block 132), after which control returns to block 100.

Figure 3 describes the overall operation of the Kernel of the Eden OS as run on the RISC core CPU of the DSP 11 for the present application. The kernel is multitasking, in that it can run multiple programs or tasks concurrently, with each one having its own priority and being capable of initiating other (child) tasks. After the Kernel initializes via blocks 400-420, operation starts at the idle mode at block 480, where the PVS waits for events to occur, and when one occurs it is handled at block 430. Every program interacts with the operating system this way, by having its tasks attended to at block 430. The type of events that arise are either synchronous or asynchronous. At block 440, if a synchronous event is detected, processing of the synchronous events is initiated via connector 5. Otherwise, a test is performed at block 450 to detect an asynchronous event, in which case processing of the asynchronous events is initiated via connector 6. In each case, after processing is initiated the operating system returns to the idle mode to process other events. Another special event to occur is error handling at block 460. In the event that an asynchronous event is not detected at block 450, a test is performed at block 460 to detect a failure event and if there is none, the program returns to the idle mode. In the event of a hardware failure, a communications failure or a software failure, an error event is detected at block 460 and a run time handler is issued (block 470) and handles the event. Control then returns to the idle mode. The synchronous and asynchronous events identified

in Fig. 3 are only exemplary and it is contemplated that there may be others of each type.

Figure 4 is a block diagram illustrating the routine performed by the controller of DSP/RISC Chip 11 when an analog audio message is to be recorded. At block 710, a test is performed to determine whether the incoming messages are from the built-in microphone. If not, control is transferred to the routine of Fig. 5. If so, the audio message is digitized and compressed (block 720) and placed in the working pool of data (block 730). At block 740, a test is performed to determine whether memory was filled before an entire message was stored. If not, the routine is terminated, and control returns to the idle mode. If so, recording is disable (block 750), and the operator is notified, as by warning light, that the memory is full (block 760). Control reverts to the idle mode.

Figure 5 is a block diagram illustrating the routine performed to record analog audio from the telephone line. At block 800, a test is performed to determine whether an audio message being received is from the communications link (telephone line). If not control is transferred to the routine of Fig. 6. If so, the message is passed through the Telecom/Audio Codec 17 as audio (block 810), and a test is performed at block 820 to determine whether compression is to be performed by the DSP/RISC Chip. If so, the message is stored in local memory (block 830), recording is stopped, and control is returned to the idle mode. If compression is not to be performed by the DSP/RISC Chip, the message is sent to the Telecom/Audio Codec, which compresses it by a standard (ADPCM) algorithm (block 840). The message is then sent back to the DSP/RISC 11 through its UART (block 850), and the DSP/RISC chip control that causes the message to be stored I flash memory 13 (block 860). Control is then returned to the idle mode.

Figure 6 is a block diagram of the routine performed by the Audio/Telecom Codec controller to play stored audio through the built-in speaker. At block 900, the operator selects a message from the pool of messages stored in the device. At block 910, a test is performed to determine whether



stored message to be read was originally compressed by the audio/telecom codec. If not, control is transferred to block 920. If so, the message is read and decompressed using the audio/telecom codec (block 930), and the decompressed message  
5 is applied to the digital-to-analog converter (DAC) in the audio/telecom codec (block 940). The message is the played via the built-in speaker 18 through the D/A converter and amplifier 28 (block 950), and control is returned to the idle mode.

If the stored message was not originally compressed  
10 by the audio/telecom codec, a test is performed at block 920 to determine whether the stored message was originally compressed by the audio/telecom codec. If not, the user is notified (block 960), and control is returned to the idle mode. If so, the message is read by the controller (block 970), and  
15 it is then sent to the modem to be decompressed and then returned from the modem to memory 13 through the UART port of the audio/telecom codec 17 (block 980). Control is transferred to block 940, and playback is handled in the same manner as a message originally compressed by the Audio/telecom codec.

20 Figure 7 is a schematic illustration of how the PVS, connected to its cradle may be connected to a PC (whether multimedia or not) or to a specially configured TAD with a built-in modem in order to permit a PC or TAD user (A) to send or receive a voice file from or to the PVS through a modem  
25 other than the telecom/audio codec of the PVS. This would permit a PC user to send or attach a voice file resident in the PVS over the PC's modem and would likewise permit the PC user to download a voice file received over the PC's modem directly to the PVS. The same configuration would permit a non-  
30 multimedia PC user (B) to play audio files by using the PVS's multimedia capabilities to play audio files received over the non-multimedia PC's modem. This configuration would likewise permit the PC user (C) to record audio through the PVS's built-in microphone and transmit it through the PC's modem as files  
35 or streaming audio. Such a configuration would also permit the user of a PC (D) to redirect audio files directly to the PVS while using a standard Web browser program. Finally, a similar

configuration with a modem configured TAD would permit the TAD user to download audio messages to and from the TAD to the PVS.

Bi-directional communication from the PC to the PVS is handled by a communication cable (e.g. 9 pin connector) at the PC and the serial RS232 port on the PVS and controlled by the asynchronous event software controlling input/output from the UART communication interface.

The software at the PC handles the driver for sending/receiving data to/from the PC to the PVS. For sending data, this would be similar to a PC sending data to a fax or printer, and for receiving data, this is similar to a PC receiving data from a scanner. This driver sets all required parameters for the PVS such as type of operation, length and wait for acknowledgment and "End of Transmission". The PC also handles the software to use the PVS as an attachment (peripheral) for receiving multimedia audio messages so that the speaker on the PVS will operate. The PC also handles the software to manage the microphone input of the PVS, and software to integrate with a standard Web Browsers (e.g. Netscape Navigator) to be fully integrated with the software and invoke commands to the PVS accordingly.

The software in the PVS is part of the multitasking operating functions to handle Remote activation of Procedural Calls (RPC) controlled under the asynchronous events software of the PVS.

Although preferred embodiments of the invention have been disclosed for illustrative purposes, those skilled in the art will appreciate that many additions, modifications and substitutions are possible without departing from the scope and spirit of the invention as defined in the accompanying claims.



Highly integrated embedded processor

MIPS  
PR31100

Version 1.2

**GENERAL DESCRIPTION**

PR31100 Processor is a single-chip, low-cost, integrated embedded processor consisting of MIPS R3000 core and system support logic to interface with various types of devices.

PR31100 consists of a MIPS R3000 RISC CPU with 4 KBytes of instruction cache memory and 1 KByte of data cache memory, plus integrated functions for interfacing to numerous system components and external I/O modules. The R3000 RISC CPU is also augmented with a multiply/accumulate module to allow integrated DSP functions, such as a software modem for high-performance standard data and fax protocols. PR31100 also contains multiple DMA channels and a high-performance and flexible Bus Interface Unit (BIU) for providing an efficient means for transferring data between external system memory, cache memory, the CPU core, and external I/O modules. The types of external memory devices supported include dynamic random access memory (DRAM), asynchronous dynamic random access memory (SDRAM), static random access memory (SRAM), Flash memory, read-only memory (ROM), and expansion cards (PCMCIA and/or MagicCard). PR31100 also contains a System Interface Module (SIM) containing integrated functions for interfacing to numerous external I/O modules such as liquid crystal displays (LCDs), the UCB1100 (which handles most of the analog functions of the system, including sound and telecom codecs and touchscreen ADC), ISDN/high-speed serial, infrared, wireless peripherals, Magicbus, etc. Lastly, PR31100 contains support for implementation of power management, whereby various PR31100 internal modules and external subsystems can be individually (under software control) powered up and down.

Figure 1 shows an External Block Diagram of PR31100.

**FEATURES**

- 32-bit R3000 RISC static CMOS CPU
- 4 KByte instruction cache
- 1 KByte data cache
- Multiply/accumulator
- On-chip peripherals with individual power-down
  - Multi-channel DMA controller
  - Bus interface unit
  - Memory controller for ROM, Flash, RAM, DRAM, SDRAM, SRAM, and PCMCIA and/or MagicCard
  - Power management module
  - Video module
  - Real-time clock 32.760KHz reference
  - High-speed serial interface
  - Infrared module
  - Dual-UART
  - SPI bus
- 3.3V supply voltage
- 208-pin LQFP (Low profile quad flat pack)
- 40MHz operation frequency

**ORDERING INFORMATION**

PART NUMBER	TEMPERATURE RANGE (°C) AND PACKAGE	FREQUENCY (MHz)	DRAWING NUMBER
PR31100ABC	0 to +70, 208-pin Low Profile Quad Flat Pack	40	LQFP208

Highly integrated embedded processor

MIPS  
PR31100

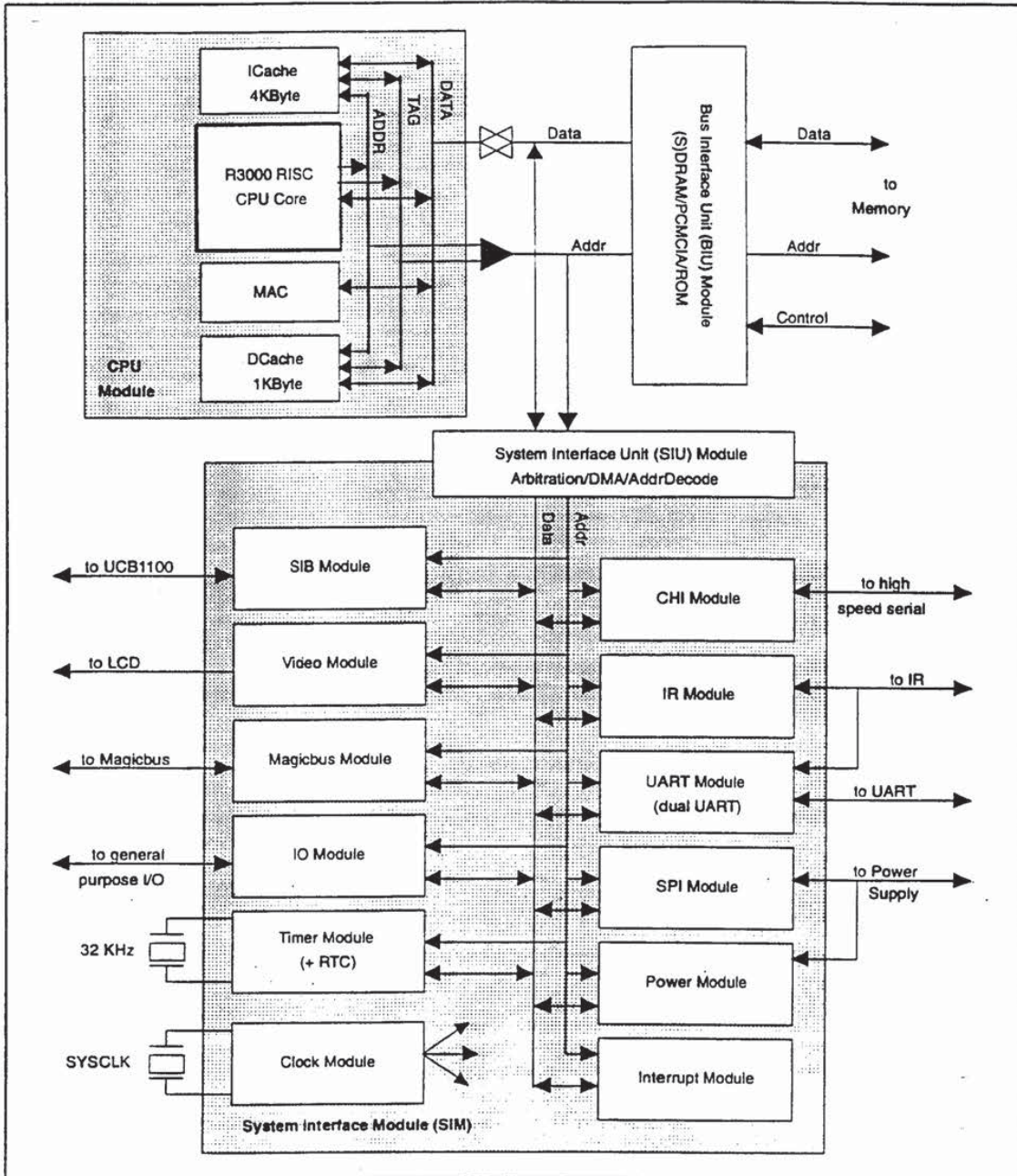


Figure 1. PR31100 Block Diagram



## Highly integrated embedded processor

MIPS  
PR31100**OVERVIEW**

Each of the on-chip peripherals consist of:

**BIU Module**

- System memory and PR31100 Bus Interface Unit (BIU)
  - supports up to 2 banks of physical memory
  - supports self-refreshing DRAM and SDRAM
  - programmable parameters for each bank of DRAM or SDRAM (row/column address configuration, refresh, burst modes, etc.)
- programmable chip select memory access
  - 4 programmable (size, wait states, burst mode control) memory device and general purpose chip selects available for system ROM, SRAM, Flash available for external port expansion registers
  - 4 programmable (wait states, burst mode control) MagicCard or general purpose chip selects available for (future) MagicCard expansion memory
- PR31100 provides the chip select and card detect signals supports card insertion/removal timeouts MagicCard requires minimal number of unique control/status signals per port
- supports up to 2 identical full PCMCIA ports
  - PR31100 and UCB1100 provide the control signals and accepts the status signals which conform to the PCMCIA version 2.01 standard
  - appropriate connector keying and level-shifting buffers required for 3.3V versus 5V PCMCIA interface implementations

**SIU Module**

- multi-channel 32-bit DMA controller and System Interface Unit (SIU)
- independent DMA channels for video, Magicbus, SIB to/from UCB1100 audio/telecom codecs, high-speed serial port, IR UART, and general purpose UART
- address decoding for submodules within System Interface Module (SIM)

**CPU Module**

- R3000 RISC central processing unit core
  - full 32-bit operation (registers, instructions, addresses)
  - 32 general purpose 32-bit registers; 32-bit program counter
  - MIPS RISC Instruction Set Architecture (ISA) supported
- on-chip cache
  - 4 KByte direct-mapped instruction cache (I-cache)
    - physical address tag and valid bit per cache line
    - programmable burst size
    - instruction streaming mode supported
  - 1 KByte data cache (D-cache)
    - physical address tag and valid bit per cache line
    - programmable burst size
    - write-through
    - cache address snoop mode supported for DMA
    - 4-level deep write buffer
- programmable memory protection

- separate read and write protection control for kernel and user space
- 8 total protectable regions available, each individually programmable, using breakpoint address, mask, control, and status registers
- causes address exception on illegal reads or writes
- high-speed multiplier/accumulator
  - on-chip hardware multiplier
  - supports 16x16 or 32x32 multiplier operations, with 64-bit accumulator
  - existing multiply instructions are enhanced and new multiply and add instructions are added to R3000 instruction set to improve the performance of DSP applications
- CPU Interface
  - handles data bus, address bus, and control interface between CPU core and rest of PR31100 logic

**Clock Module**

- PR31100 supports system-wide single crystal configuration, besides the 32 KHz RTC XTAL (reduces cost, power, and board space)
- common crystal rate divided to generate clock for CPU, video, sound, telecom, UARTs, etc.
- external system crystal rate is vendor-dependent
- independent enabling or disabling of individual clocks under software control, for power management

**CHI Module**

- high-speed serial Concentration Highway Interface (CHI) contains logic for interfacing to external full-duplex serial time-division-multiplexed (TDM) communication peripherals
- supports ISDN line interface chips and other PCM/TDM serial devices
- CHI interface is programmable (number of channels, frame rate, bit rate, etc.) to provide support for a variety of formats
- supports data rates up to 4.096 Mbps
- independent DMA support for CHI receive and transmit

**Interrupt Module**

- contains logic for individually enabling, reading, and clearing all PR31100 interrupt sources
- interrupts generated from internal PR31100 modules or from edge transitions on external signal pins

**IO Module**

- contains support for reading and writing the 7 bi-directional general purpose IO pins and the 32 bi-directional multi-function IO pins
- each IO port can generate a separate positive and negative edge interrupt
- independently configurable IO ports allow PR31100 to support a flexible and wide range of system applications and configurations

## Highly integrated embedded processor

1600  
MIPS  
PR31100

### IR Module

- IR consumer mode
  - allows control of consumer electronic devices such as stereos, TVs, VCRs, etc.
  - programmable pulse parameters
  - external analog LED circuitry
- IRDA communication mode
  - allows communication with other IRDA devices such as FAX machines, copiers, printers, etc.
  - supported by UART module within PR31100
  - external analog receiver preamp and LED circuitry
  - data rate = up to 115 Kbps at 1 meter
- IR FSK communication mode
  - supported by UART module within PR31100
  - external analog IR chip(s) perform frequency modulation to generate the desired IR communication mode protocol
  - data rate = up to 36000 bps at 3 meters
- carrier detect state machine
  - periodically enables IR receiver to check if a valid carrier is present

### Magicbus Module

- synchronous, serial 2-wire (clock and data), half-duplex communications protocol
- supports low-cost, low-power peripherals
- supports maximum data rate of 14.75 Mbps
- DMA support for Magicbus receive and transmit

### Power Module

- ~ power-down modes for individual internal peripheral modules
- serial (SPI port) power supply control interface supported
- power management state machine has 4 states: RUNNING, DOZING, SLEEP, and COMA

### Serial Interconnect Bus (SIB) Module

- PR31100 contains holding and shift registers to support the serial interface to the UCB1100 and/or other optional codec devices
- interface compatible with slave mode 3 of Crystal CS4216 codec
- synchronous, frame-based protocol
- PR31100 always master source of clock and frame frequency and phase; programmable clock frequency
- each SIB frame consists of 128 clock cycles, further divided into 2 subframes or words of 64 bits each (supports up to 2 devices simultaneously)

- independent DMA support for audio receive and transmit, telecom receive and transmit
- supports 8-bit or 16-bit mono telecom formats
- supports 8-bit or 16-bit mono or stereo audio formats
- independently programmable audio and telecom sample rates
- CPU read/write registers for subframe control and status

### System Peripheral Interface (SPI) Module

- provides interface to SPI peripherals and devices
- full-duplex, synchronous serial data transfers (data in, data out, and clock signals)
- PR31100 supplies dedicated chip select and interrupt for an SPI interface serial power supply
- 8-bit or 16-bit data word lengths for the SPI interface
- programmable SPI baud rate

### Timer Module

- Real Time Clock (RTC) and Timer
- 40-bit counter (30.517  $\mu$ sec granularity); maximum uninterrupted time = 388.36 days
- 40-bit alarm register (30.517  $\mu$ sec granularity)
- 16-bit periodic timer (0.868  $\mu$ sec granularity); maximum timeout = 56.8 msec
- interrupts on alarm, timer, and prior to RTC roll-over

### UART Module

- 2 independent full-duplex UARTs
- programmable baud rate generator
- UART-A port used for serial control interface to external IR module
- UART-B port used for general purpose serial control interface
- UART-A and UART-B DMA support for receive and transmit

### Video Module

- bit-mapped graphics
- supports monochrome, grey scale, or color modes
- time-based dithering algorithm for grey scale and color modes
- supports multiple screen sizes
- supports split and non-split displays
- variable size and relocatable video buffer
- DMA support for fetching image data from video buffer



Highly integrated embedded processor

**MIPS**  
PR31100

Figure 2 shows a typical system block diagram consisting of PR31100 and UCB1100 for a total system solution.

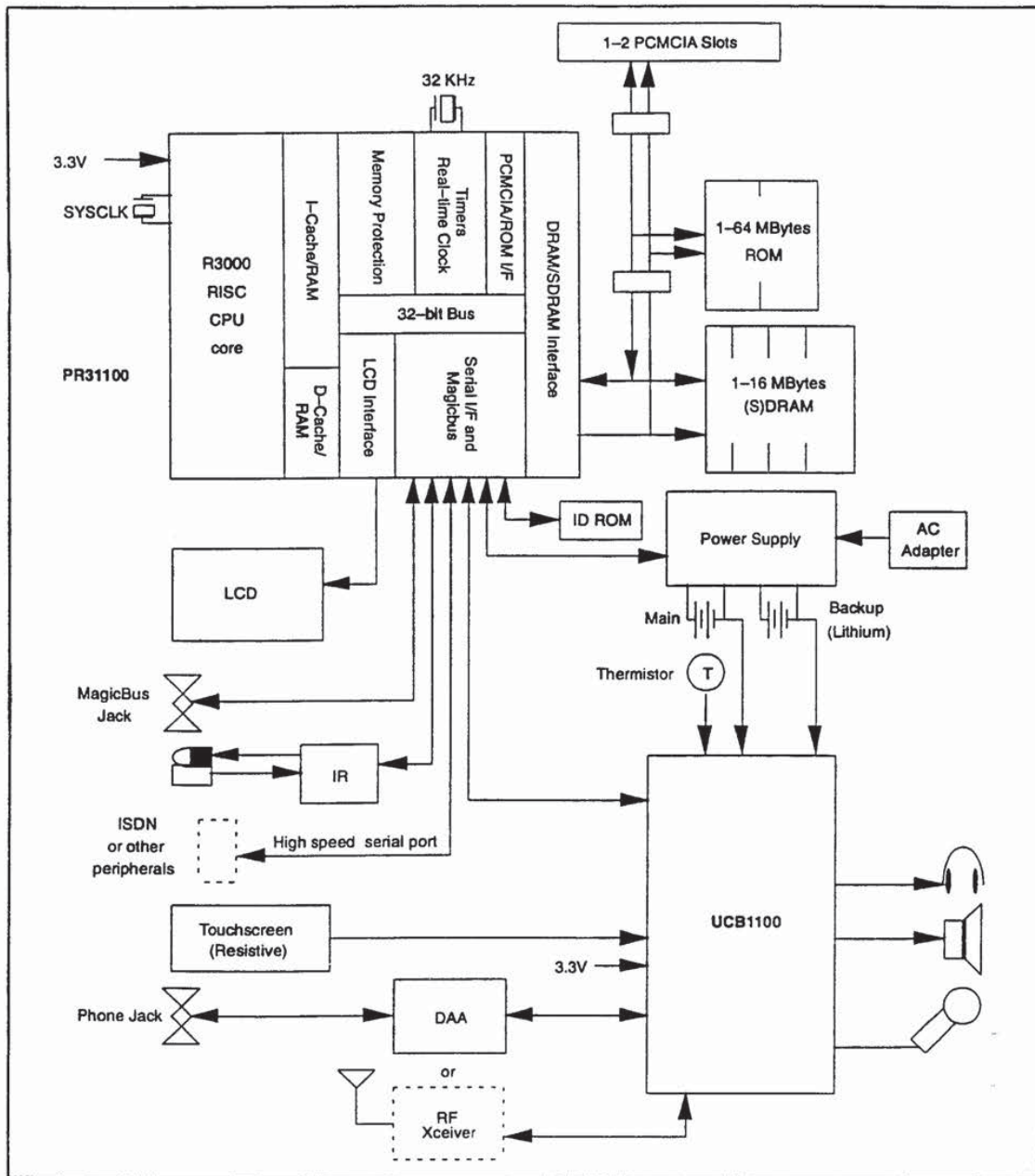


Figure 2. System Block Diagram

1996 Aug 07

**SUBSTITUTE SHEET (RULE 26)**

**Advanced modem/audio analog front-end**

**UCB1100**

*Version 1.2*

**GENERAL DESCRIPTION**

The UCB1100 is a single chip, integrated mixed signal audio and telecom codec. The single channel audio codec is designed for direct connection of a microphone and speaker. The built-in telecom codec can directly be connected to a DAA and supports high speed modem protocols. The incorporated 10 bit analogue to digital converter and the touch screen interface provides complete control and readout of a connected 4 wire resistive touch screen. The 10 additional general purpose I/O pins provides programmable inputs and/or outputs to the system.

The UCB1100 has a serial interface bus (SIB) intended to communicate to the system controller. Both the codec input and output data and the control register data is multiplexed on this SIB interface.

**APPLICATIONS**

- Personal Intelligent Communicators (PIC)/  
Personal Digital Assistants (PDA)
- Screen phones
- Smart Phone and smart Fax
- Intelligent Communicators

**KEY FEATURES**

- 48-pin LQFP (SOT313-2) small body SMD package and low external component count result in minimal PCB space requirement.
- A 12-bit sigma delta audio codec with programmable sample rate, input and output voltage levels, capable of connecting directly to speaker and microphone, including digitally controlled mute, loopback and clip detection functions
- A 14-bit sigma delta telecom codec with programmable sample rate, including digitally controlled input voltage level, mute, loopback and clip detection functions. The telecom codec is intended for direct connection to a DAA (digital access arrangement) and includes a built-in sidetone suppression circuit.
- A complete 4 wire resistive touch screen interface circuit supporting position, pressure and plate resistance measurements.
- A 10-bit successive approximation ADC with internal track and hold circuit and analogue multiplier for touch screen readout and monitoring of four external high voltage (7.5V) analogue voltages.
- A high speed, 4 wire serial interface data bus (SIB) for communication to system controller.
- A 3.3V supply voltage and built in power saving modes make the UCB1100 optimal for portable and battery powered applications.

**TABLE OF CONTENTS**

GENERAL DESCRIPTION .....	2
APPLICATIONS .....	2
KEY FEATURES .....	2
TABLE OF CONTENTS .....	2
1.0 FUNCTIONAL BLOCK DIAGRAM .....	3
2.0 ORDERING INFORMATION .....	4
3.0 ABSOLUTE MAXIMUM RATINGS .....	4
4.0 DC ELECTRICAL CHARACTERISTICS .....	5
5.0 PINOUT .....	6
5.1 PINLIST .....	7
6.0 FUNCTIONAL DESCRIPTION .....	8
6.1 AUDIO CODEC .....	8
6.1.1 AUDIO INPUT SPECIFICATIONS .....	10
6.1.2 AUDIO OUTPUT SPECIFICATIONS .....	11
6.2 TELECOM CODEC .....	12
6.2.1 TELECOM INPUT SPECIFICATIONS .....	14
6.2.2 TELECOM OUTPUT SPECIFICATIONS .....	15
6.3 TOUCH SCREEN MEASUREMENT MODES .....	16
6.3.1 POSITION MEASUREMENT .....	16
6.3.2 PRESSURE MEASUREMENT .....	16
6.3.3 PLATE RESISTANCE MEASUREMENT .....	16
6.4 TOUCH SCREEN INTERFACE .....	17
6.4.1 TOUCH SCREEN SPECIFICATIONS .....	18
6.5 10 BIT ADC .....	19
6.5.1 SPECIFICATION OVERVIEW .....	21
6.6 ON CHIP REFERENCE CIRCUIT .....	21
6.6.1 SPECIFICATION OVERVIEW .....	21
6.7 SERIAL INTERFACE BUS .....	22
6.7.1 SIB DATA FORMAT .....	23
6.7.2 CODEC DATA TRANSFER .....	24
6.7.3 CONTROL REGISTER DATA TRANSFER .....	26
6.7.4 AC ELECTRICAL CHARACTERISTICS .....	27
6.8 GENERAL PURPOSE I/Os .....	27
6.9 INTERRUPT GENERATION .....	27
6.10 RESET CIRCUITRY .....	28
7.0 MISCELLANEOUS .....	29
7.1 POWER ROUTING STRATEGY .....	29
8.0 CONTROL REGISTER OVERVIEW .....	30
9.0 PACKAGE OUTLINES .....	34
9.1 PACKAGE OUTLINE LQFP48 .....	34
10.0 DEFINITIONS .....	36



Advanced modem/audio analog front-end

UCB1100

1.0 FUNCTIONAL BLOCK DIAGRAM

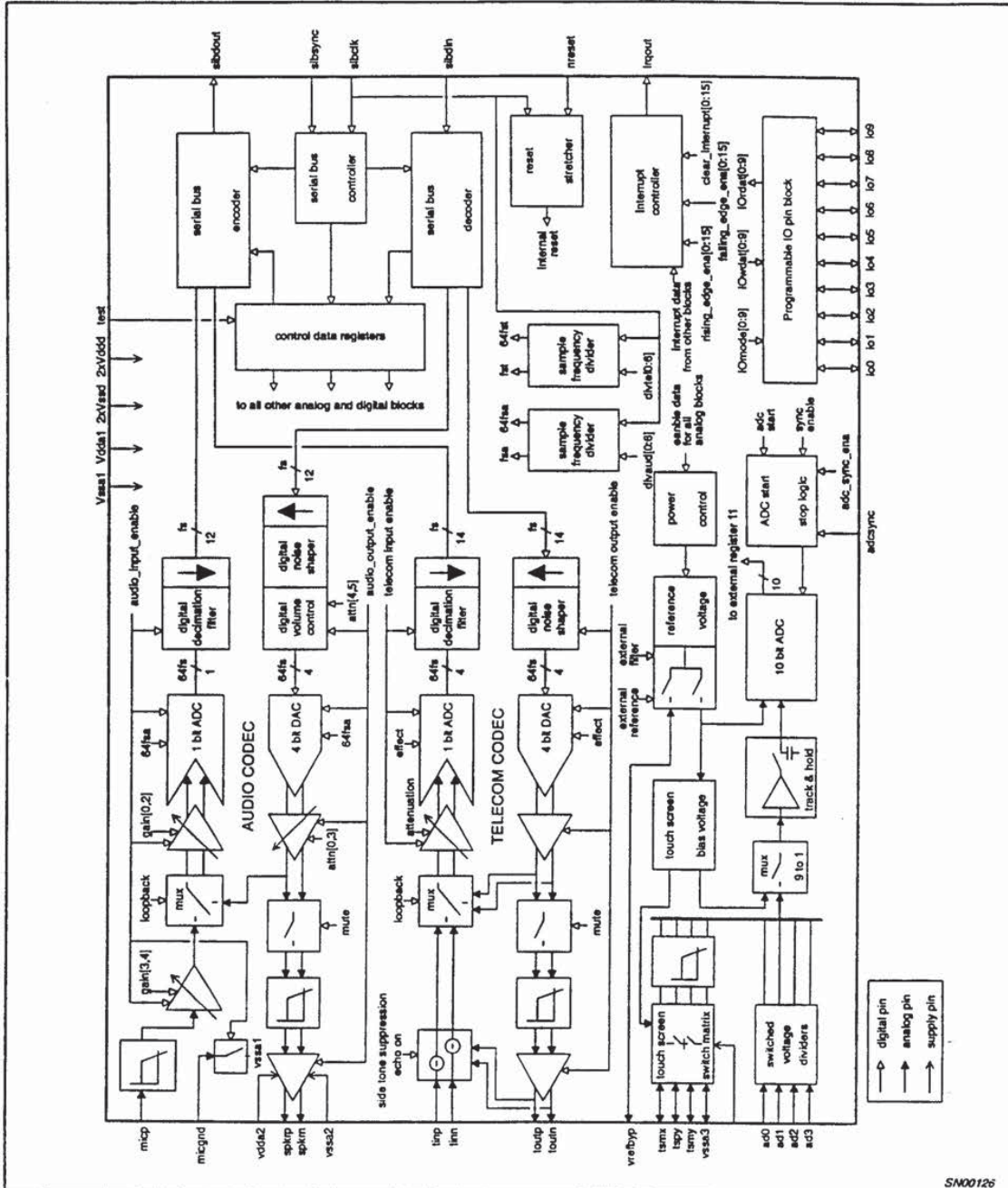


Figure 1. Block Diagram of the UCB1100

1996 Apr 09

SUBSTITUTE SHEET (RULE 26)

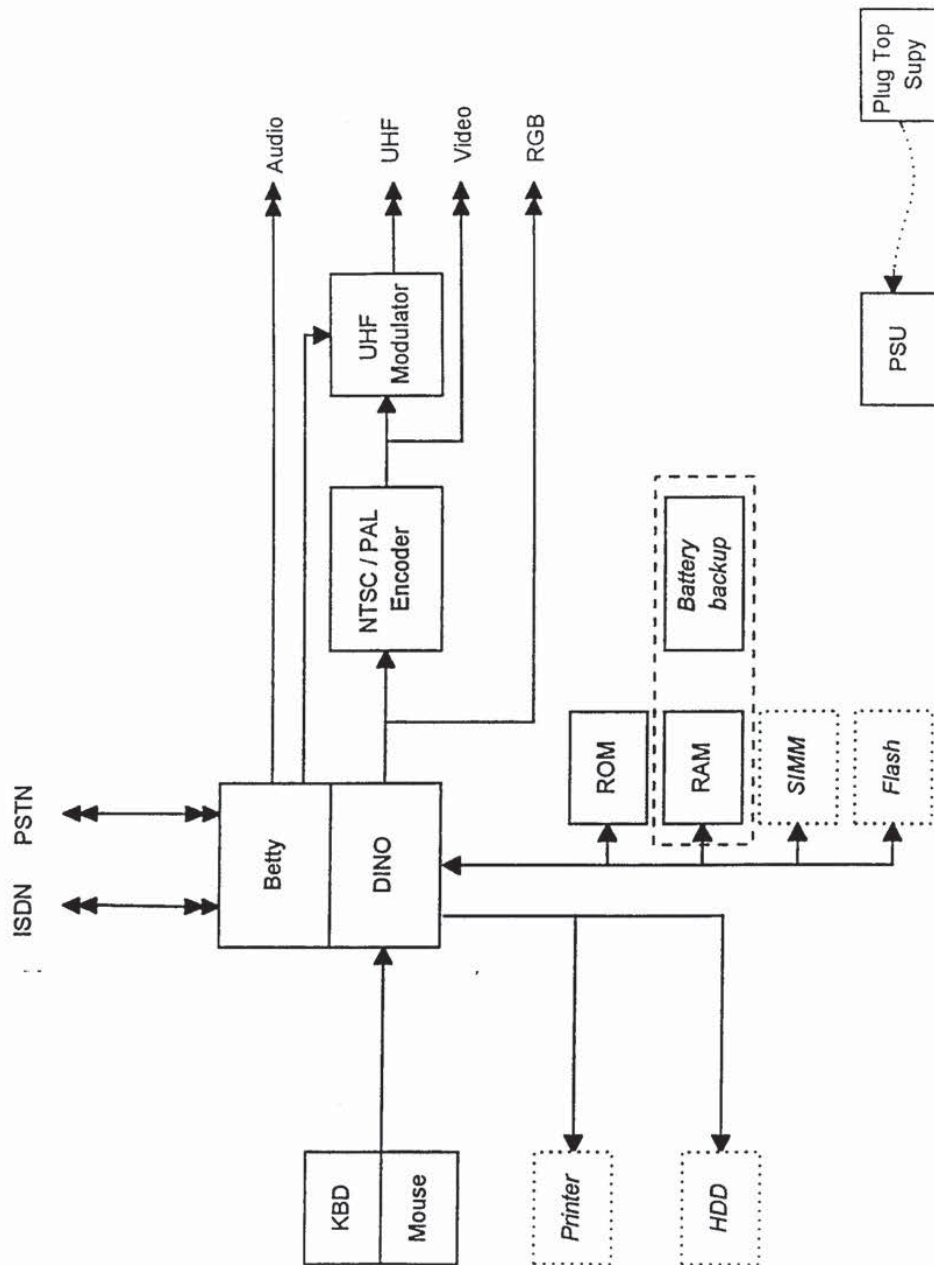
## *Eden OS V.2.0 Overview*

EROS (Eden Real-time Operating System) is a full-featured operating system designed from scratch to be:

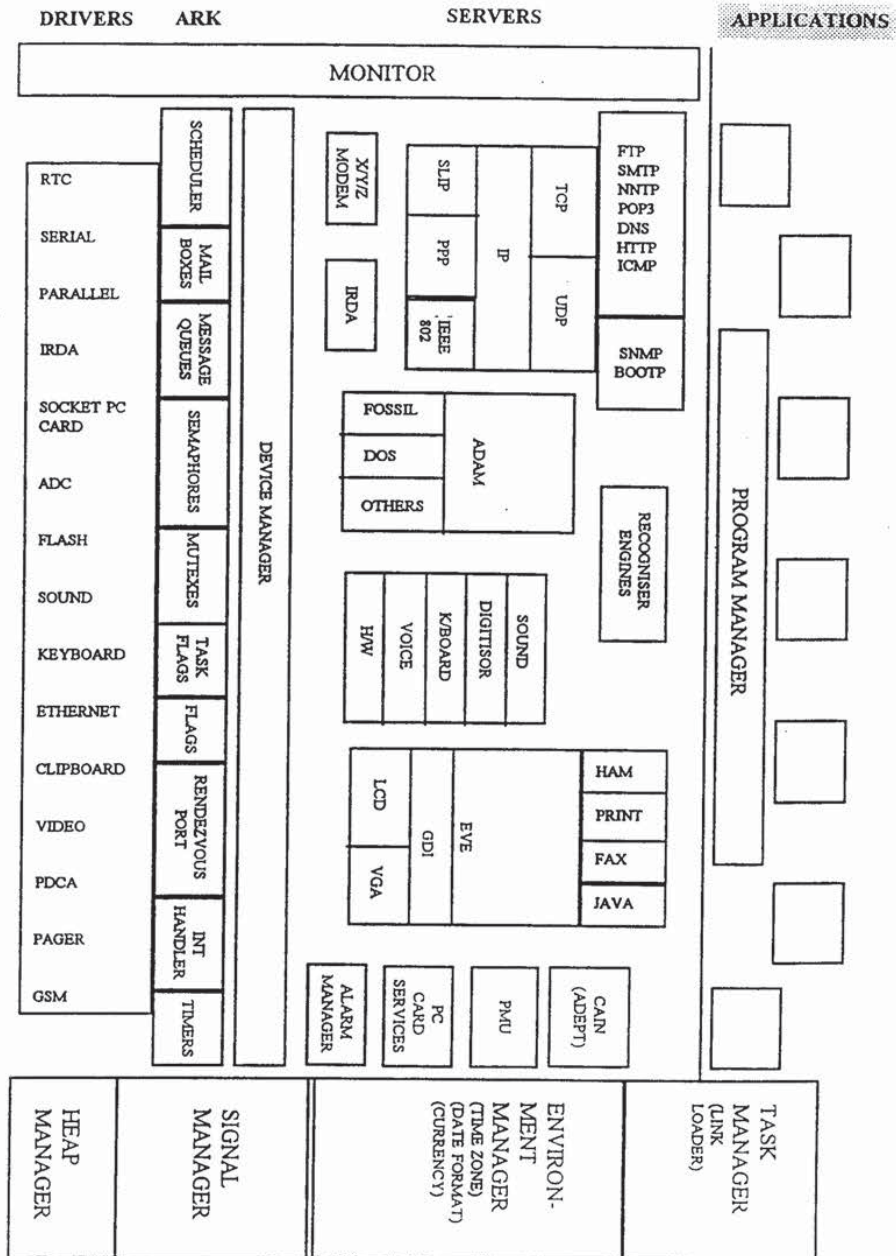
- Compact: the operating system consumes resources in the form of ROM and RAM in the product, these resources add to the BOM costs of the product and any space occupied by the OS must be justified. EROS is designed to be small. The modularity is also a feature which supports the compactness of the operating system; where individual products do not need a feature it can be omitted or replaced by some subset, leaving more room for the visible components that add features and thus perceived value.
- Open: an open OS will be more likely to attract 3<sup>rd</sup> party developers looking to design software products for sale, so allowing more value in the form of available features to be added to products based on the OS. EROS has a published API and a PC-based SDK which supports the development of applications in a readily available development platform.
- Modular: Each component individually and in many cases sub-components may be omitted or replaced without difficulty where their functionality is not needed or has to be changed for particular products.
- Portable: 99% written in ANSI C, porting to a new processor and/or tailoring to a specific product design is sufficiently simple and predictable for this to be completely acceptable within a product development lifecycle. EROS offers the same application interface on each platform, allowing applications to run on any EROS platform. EROS application development is carried out on a PC SDK incorporating a subset of the target OS. In the medium term, Eden will adopt the GNU toolset for the development of EROS itself and support this toolset for all targets.

The overall structure of EROS is shown in the enclosed slide.





SUBSTITUTE SHEET (RULE 26)



SUBSTITUTE SHEET (RULE 26)



The components of EROS are:

**Advanced Real-time Kernel (ARK):** This is the core of EROS; based on the ITRON 3 specification and extended, this supports pre-emptive, prioritised multitasking, message queues, semaphores, rendezvous ports, event flags and interrupt handling.

**Virtual Memory Management (VMM):** Depending on the level of support available within the chosen platform, this offers protection against faulty applications, mapping of virtual memory onto real memory and supplies the dynamic memory handling (`malloc()` and `free()`).

**Eden's Visual Environment (EVE):** This offers an object oriented means of building up a GUI. EVE implements a core set of simple objects which do not impose a 'look and feel' on the OEM and application provider. EVE also supports a limited number of compound objects (as the name implies, constructed by joining simple objects together). Application writers can easily generate their own compound objects to implement the GUI they design.

**Advanced Database Access Module (ADAM):** This is a traditional database implementation, offering a record structure, insert, delete, search, data integrity checks and record locking. It differs from other database implementations by being designed to operate in an embedded environment.

**Clipboard Application Interface (CAIN):** The EROS clipboard supports copy, cut and paste and drag and drop. It does this by allowing applications to set-up self-describing data items which can then be passed between applications which have no knowledge of each other.

**Generic Object Data System (GODS):** EROS' file system is built as a number of layers, allowing multiple filing systems to be supported (typically a DOS-compatible filing system on PC-cards and a Flash-oriented for built in non-volatile storage) without the applications being aware of such details.

**PC card services:** EROS supports SRAM, Flash and ATA drives as storage and data exchange devices. The PC card services offer a key set of facilities allowing support for specific card types to be developed as necessary.

**Device Handling:** One of the features of embedded systems is that they often have non-standard devices and PC-cards supply loadable devices which may not be known at the time the system is first built. EROS' Device Manager supports the dynamic addition of device drivers and allows handler tasks to establish a connection to whichever is the most appropriate driver.

**TCP/IP:** EROS supports TCP/IP, SLIP and PPP. A number of higher levels protocols are supported as standard within the OS including UDP, FTP, SMTP,

POP3, and HTTP. Other protocols are supported on a specific product or implementation basis.

Other features supported by EROS include:

**Linking and Loading:** Embedded systems are typically provided as a single ROM containing the operating system and all the applications. The addition of new applications and the correction of those supplied in ROM is difficult. Flash memory is used, but the mechanisms for upgrade and addition are usually clumsy. EROS makes use of a Dynamic Linker Loader (ELF) to overcome much of this difficulty. EROS itself and built-in applications are installed in ROM but their external linkage symbols are loaded into RAM during start-up. Patches can be installed so that later in the start-up sequence some of these symbols are changed to point to new code, thus avoiding the obsolete areas of code in ROM. Similarly, applications which are loaded dynamically are linked to this symbol table and so use the correct built-in and patched code.

**Localisation:** The OS structure supports OEMs and application developers in providing a framework within which applications can be constructed which are easily ported from language to language and from country to country, with little or ideally no change to software.

**Power Management:** Embedded applications are often battery powered and hence power use is critical. While the degree of support offered by particular processors and products will vary, EROS supports an API which allows applications to be constructed in a power-sensitive manner and supports the specific attributes of particular platforms in an appropriate manner.

**Application Interface:** Any application program interacts with EROS through the Application Program Interface (API). At the programming level these appear as function calls. These functions are primarily in the form of 'helpers' which execute as part of the application task and exchange information with one or more EROS tasks before returning to the application code. Responses and other input from EROS are provided by messages sent to the task's input queue or, for so-called 'blocking' calls, by the helper function using a 'rendezvous' for the exchange. Application tasks are usually structured as a single message handling loop which takes messages from a message queue.



**Development Tools:** EROS includes a set of tools to enable applications to be developed for EROS platforms. Such applications will usually be platform (processor) and product independent, subject to appropriate devices being available to handle the interfaces. The toolset comprises:

- a sub-set of EROS which executes in DOS on a PC and provides an environment in which most applications can be developed and tested. This requires that the developer uses the Borland 4.5 development system.
- cross-compilers, linker and host-target debuggers are specific to the target platform; Eden will recommend these on a platform specific basis but in the medium term will primarily suggest and support the GNU tools.
- a terminal/target monitor program which allows internal details of EROS to be examined
- font and icon editors
- full linking instructions are provided to allow OEMs to build ROM images which include EROS and built-in applications
- full construction details are supplied to allow a patch file to be created
- full instructions are supplied to allow loadable programs to be produced
- EROS for the target platform is supplied in the form of shared libraries making up the 'helper' functions, object code for the EROS tasks and an initial startup sequence to be modified by or on behalf of the OEM.

- 

**Target hardware and product-specific issues:** A very large proportion of EROS is hardware and product independent, requiring simply re-compilation to run on a new platform. Thus the amount of effort required to tailor EROS to a specific processor and product configuration is relatively small.

The areas usually requiring rework on a per-platform (i.e. per-processor) basis are:

- basic serial port driving and monitor production.
- kernel mapping at the lowest level
- core start-up sequence
- memory mapping to use the target architecture

The primary areas where such work is usually necessary on a per-product basis are:

- keyboard, screen and digitiser handling: typically each product uses different hardware in these areas, EROS offers a simple interface to program to and Eden will do this work if required.
- memory configuration and start-up: EROS supplies a skeleton start-up sequence (above) for each target platform; extending this is a product-specific task.
- Non-standard devices: EROS has a device handling architecture which supports the addition of new device handlers.
- PC-card interfacing: Eden generally has to rework the lower levels of PCMCIA card handling to use the particular controller selected.
- The development version of EROS on the PC requires changes to match the screen size of the target product, to support GUI development.



## Claims:

1                    1.            A portable apparatus for communication of  
2 audio signals in analog and digital form and for storage of the  
3 same, comprising:  
4                    digital storage means;  
5                    a communication connection to a communication  
6 channel;  
7                    a telecommunications interface having a  
8 communications input and output coupled to said communication  
9 connection and a digital input and output;  
10                   an analog-to-digital converter having an output  
11 coupled to said storage means; and  
12                   a controller coupled to said storage means and said  
13 telecommunications interface digital input and output and  
14 comprising:  
15                         means for detecting whether a signal on said  
16 communication connection is an analog or digital audio  
17 signal;  
18                         routing means controlled by said means for  
19 detecting and coupled to said telecommunications  
20 interface, said storage means and said analog-to-digital  
21 converter, upon said detecting means detecting a digital  
22 signal said routing means causing the digital output of  
23 said telecommunications interface to be coupled to said  
24 storage means, upon said detecting means detecting an  
25 analog signal said routing means causing said  
26 telecommunications interface to bypass the signal on said  
27 connection and coupling the

1           2.    same to said analog-to-digital converter for  
2 subsequent storage in said storage means.

1           3.    The apparatus of Claim 1 further comprising the  
2 coupling to said storage means being effected through a device  
3 which compresses the signal prior to storage.

1           4.    The apparatus of Claim 1, said controller  
2 further comprising:

3                   means for assembling digital messages stored in  
4 said storage means into a packetized data stream  
5 containing data and control bits; and

6                   means for coupling said packetized data stream  
7 to the digital input of said telecommunications interface  
8 for transmission over said communication channel.

1           5.    An apparatus as in claim 3, wherein said  
2 controller causes said telecommunications interface to transmit  
3 said packetized data stream at a rate that is substantially  
4 higher than the transmission rate of digitized voice.

1           6.    The apparatus of claim 1 further comprising a  
2 connection to a digital communications channel and an interface  
3 therebetween and said controller.

1           7.    The apparatus of claim 1 wherein said digital  
2 communication channel and the corresponding interface are  
3 designed to handle infrared communications.



1           8.    The apparatus of claim 1 further comprising a  
2 bar code reader coupled to said controller.

1           9.    The apparatus of claim 1 further comprising an  
2 LCD touchscreen coupled to said controller.

1           10.  An apparatus for communication of audio signals  
2 in analog and digital form and for storage of the same,  
3 comprising:  
4           digital storage means;  
5           a connection to a communication channel;  
6           a telecommunications interface having an analog input  
7 and output coupled to said connection and a digital input and  
8 output; and  
9           a controller coupled to said storage means and said  
10 telecommunications interface and comprising;  
11           means for assembling digital messages stored in said  
12 storage means into a packetized data stream containing data and  
13 control bits; and  
14           means for coupling said packetized data stream to the  
15 digital input of said telecommunications interface for  
16 transmission over said communication channel.

1           11.  An apparatus as in claim 9 wherein said  
2 controller causes said telecommunications interface to transmit  
3 said packetized data stream at a rate that is substantially  
4 higher than the transmission rate of digitized voice.

1           12. An apparatus as in claim 9 wherein said  
2 controller includes a module for detecting receipt on the  
3 communication channel of a message in HTML language and  
4 permitting two-way communication in said language.

1           13. An apparatus as in claim 9 wherein said  
2 controller includes a module for detecting receipt on the  
3 communication channel of a message in FTP language and  
4 permitting two-way communication in said language.

1           14. An apparatus as in claim 9 wherein said  
2 controller further comprises a speech synthesizer responsive  
3 to receipt of text information over said communication channel  
4 to produce an audible message simulating said text information  
5 being spoken by a human voice.

1           15. An apparatus as in claim 9 wherein said  
2 controller further comprises a database management module for  
3 receiving information about stored data and permitting  
4 selective retrieval of said information.

1           16. A method for communication of audio signals in  
2 analog and digital form over a communication channel and for  
3 storage of the same, comprising the steps of:

4           detecting whether a signal on said channel is an  
5 analog or digital audio signal;

6           upon detecting a digital signal on said channel,  
7 storing in a digital storage means the output of a



8 telecommunications interface of the type having an input  
9 coupled to said channel and a digital output;  
10 upon detecting an analog signal on said channel,  
11 converting the same from analog to digital form and storing the  
12 converted signal in a digital storage means.

1 17. The method of Claim 15 wherein prior to either  
2 of said storing steps said signal is compressed.

1 18. The method of Claim 15 performed with a  
2 telecommunications interface of the type having an analog input  
3 and output coupled to said channel and a digital input and  
4 output and further comprising the steps of:  
5 assembling digital messages stored in said  
6 storage means into a packetized data stream containing data and  
7 control bits; and  
8 coupling said packetized data stream to the  
9 digital input of said modem for transmission over said  
10 communication channel at a rate that is substantially higher  
11 than the transmission rate of digitized voice.

1 19. A method for communication of audio signals in  
2 analog and digital form over a communication channel and for  
3 storage of the same, said method being performed with a  
4 telecommunications interface of the type having an analog input  
5 and output coupled to said channel and a digital input and  
6 output and comprising the steps of:

7 assembling digital messages stored in a storage means  
8 into a packetized data stream containing data and control bits;  
9 and  
10 coupling said packetized data stream to the digital  
11 input of said modem for transmission over said communication  
12 channel at a rate that is substantially higher than the  
13 transmission rate of digitized voice.

1 20. A portable device which permits the user to  
2 record, edit, play and review voice messages and other audio  
3 material which may be received from, and subsequently  
4 transmitted to, a remote apparatus through a communication  
5 link, comprising:

6 a receptacle for a power source;  
7 integrated circuitry for localized recording,  
8 editing, storage and playback of audio signals powered from  
9 said receptacle;

10 non-volatile storage means, access to which is  
11 controlled by said integrated circuitry;

12 a built-in speaker and microphone coupled with said  
13 integrated circuitry for audible playback and local input,  
14 respectively, of audio;

15 a telecommunications interface chip set coupled with  
16 said integrated circuitry;

17 a modular telephone jack coupled to said modem chip  
18 set;

the integrated circuitry operating the device so as  
to transmit and receive audio signals at a rate substantially  
faster than originally recorded.



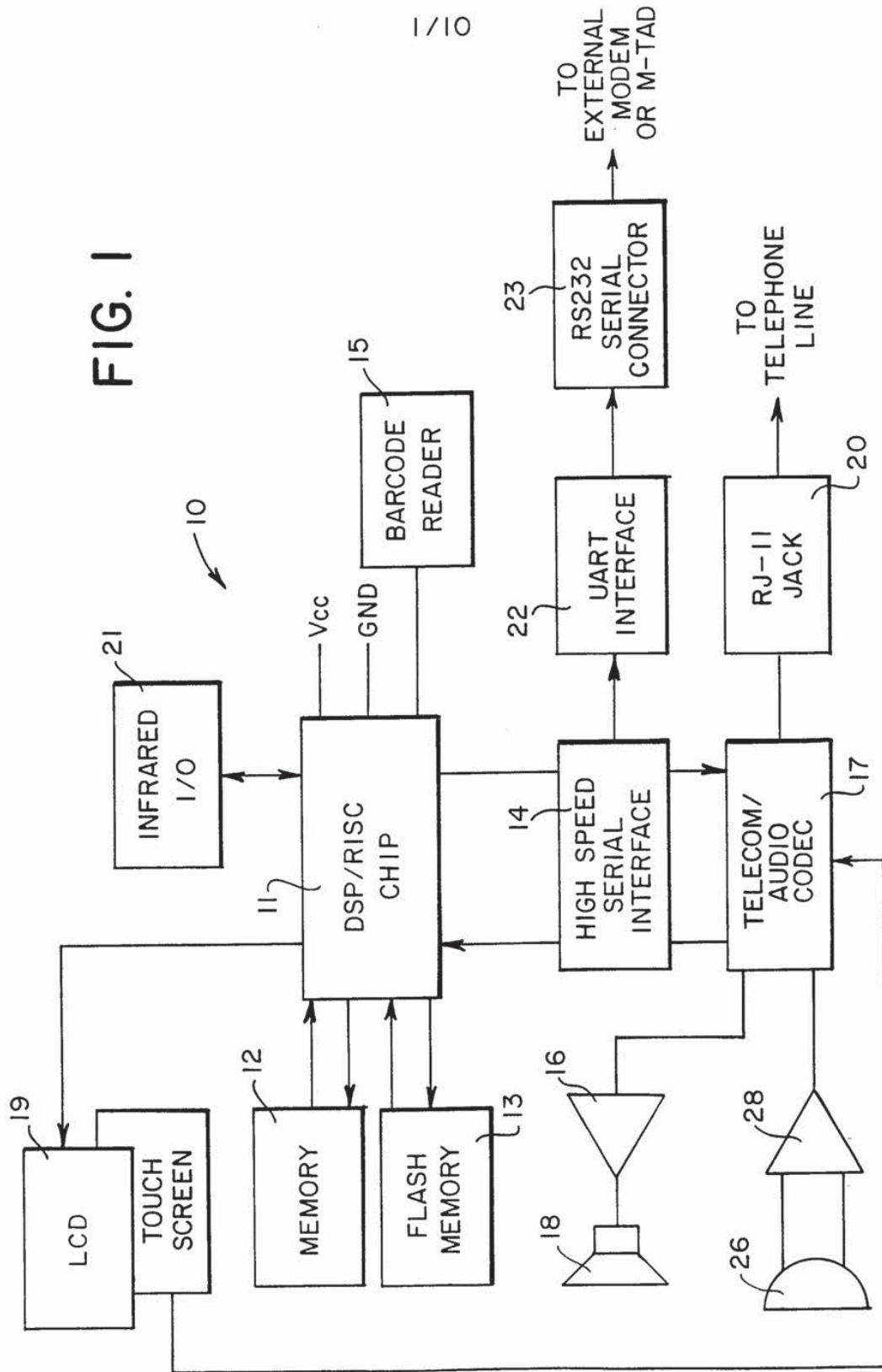
1           21. A device in accordance with claim 19 wherein  
2 said integrated circuitry includes a module that is operative  
3 to permit distinguishing between analog and digital signals  
4 received on the communication link, the analog signals being  
5 presented to said integrated circuitry without being processed  
6 by said telecommunications interface chip.

1           22. A device in accordance with claim 19 wherein  
2 said integrated circuitry includes a module permitting  
3 communication via said communication link over the internet  
4 utilizing at least one protocol available thereover.

1           23. A device in accordance with claim 19 wherein  
2 said integrated circuitry includes a module that recognizes a  
3 signal received over the communication link as text and  
4 converts the signal to a signal emulating the sound of a human  
5 voice speaking the text.

1/10

FIG. 1



SUBSTITUTE SHEET (RULE 26)



FIG. 2a

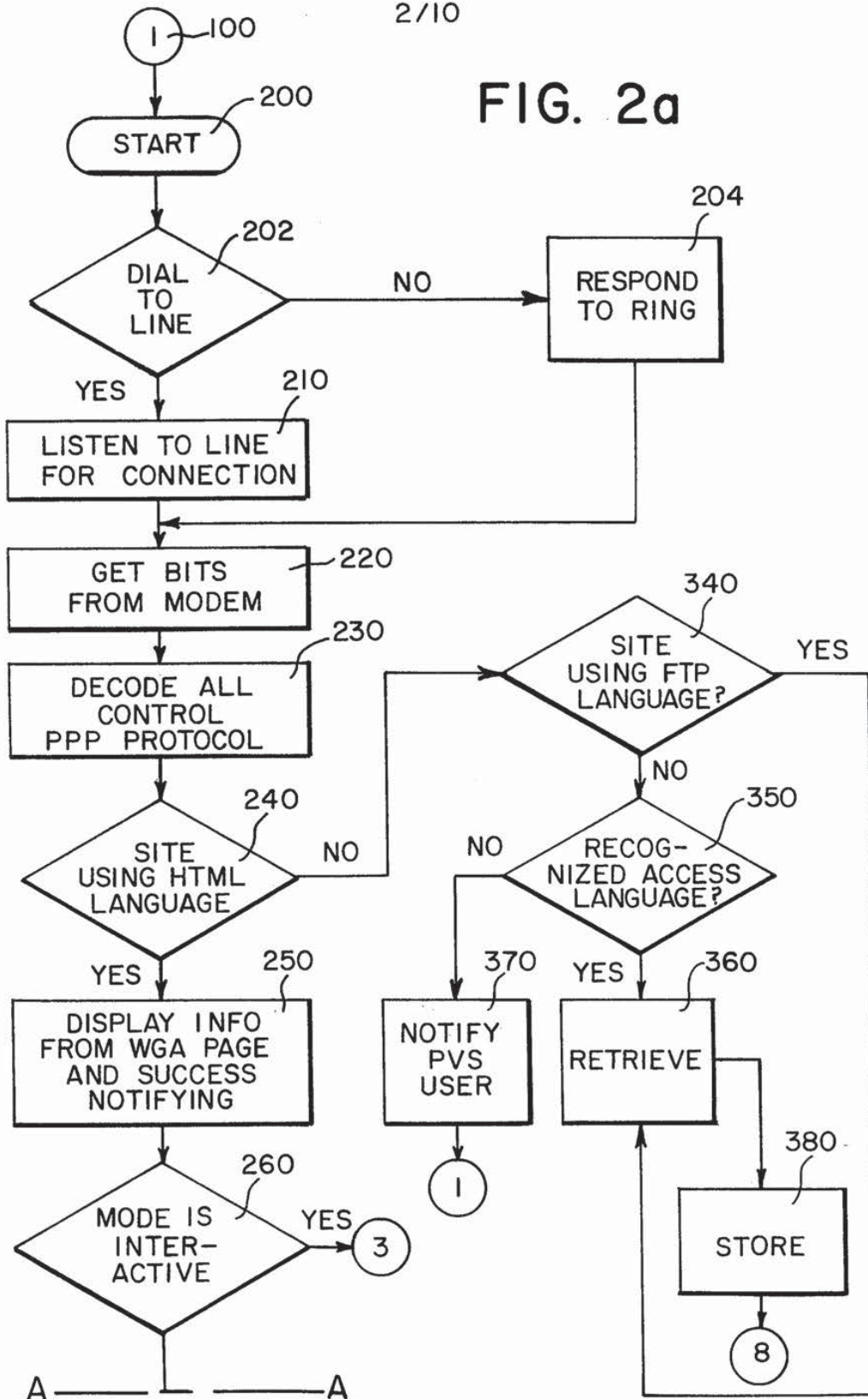
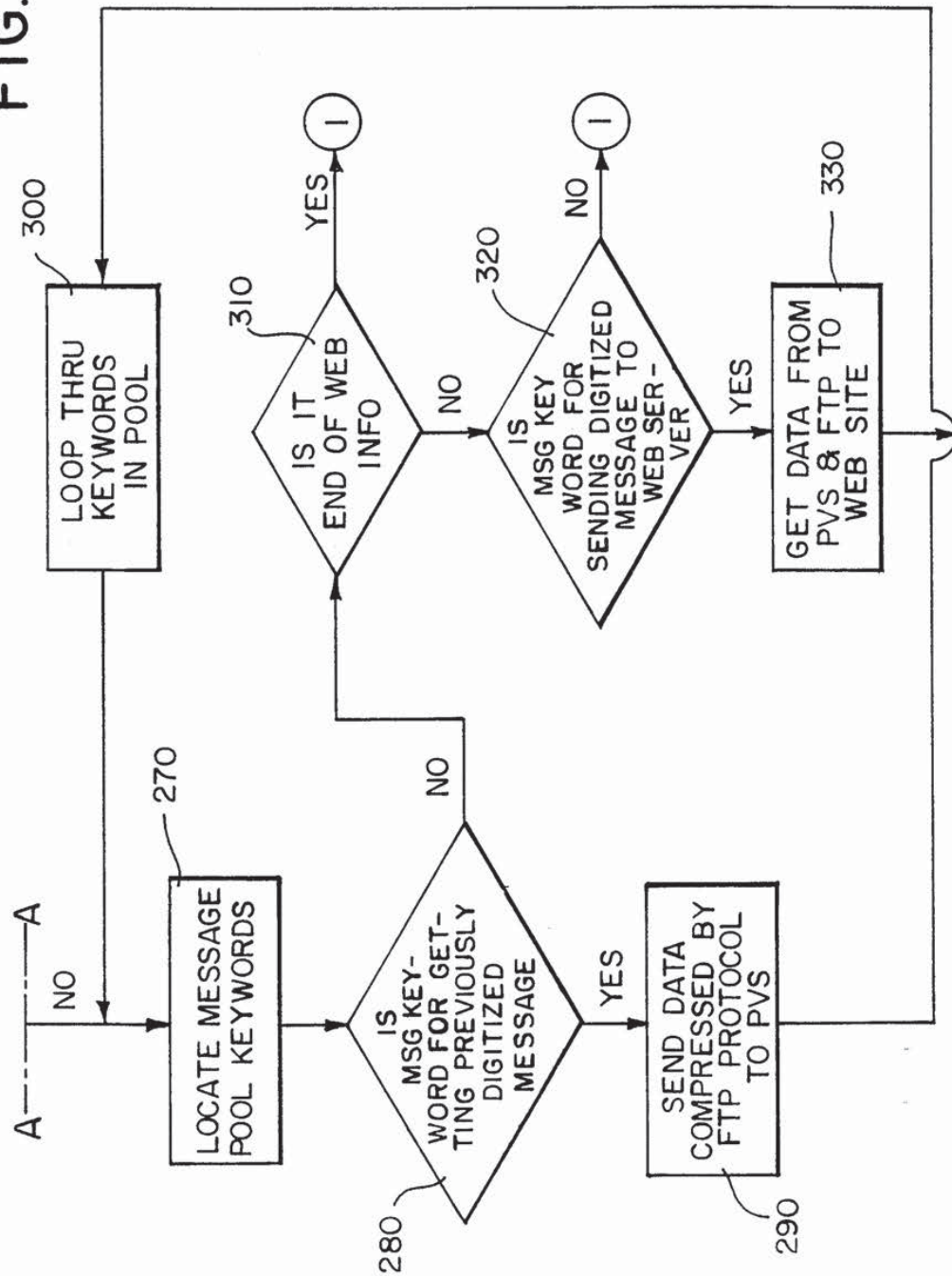
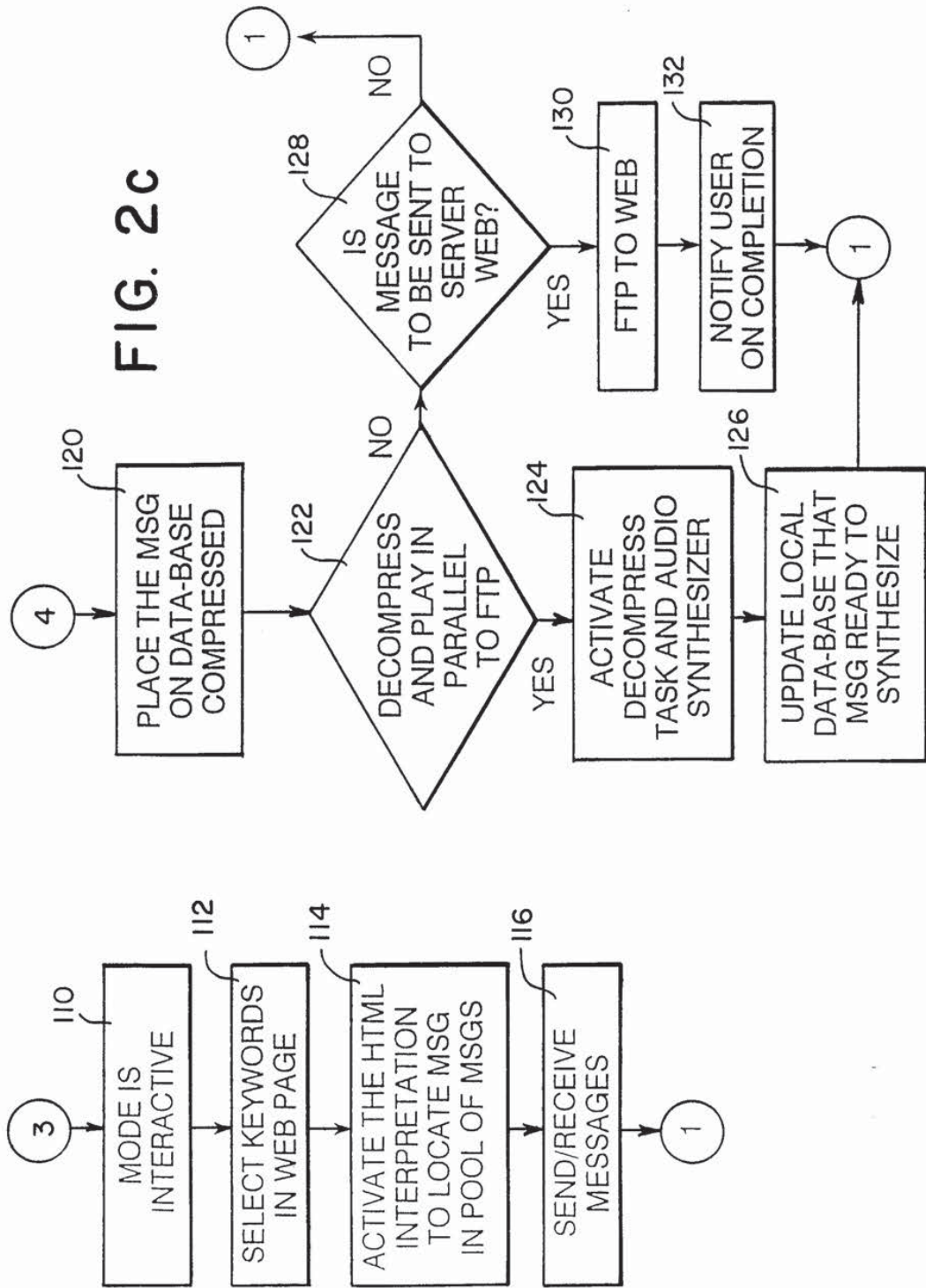


FIG. 2b





SUBSTITUTE SHEET (RULE 26)



FIG. 3a

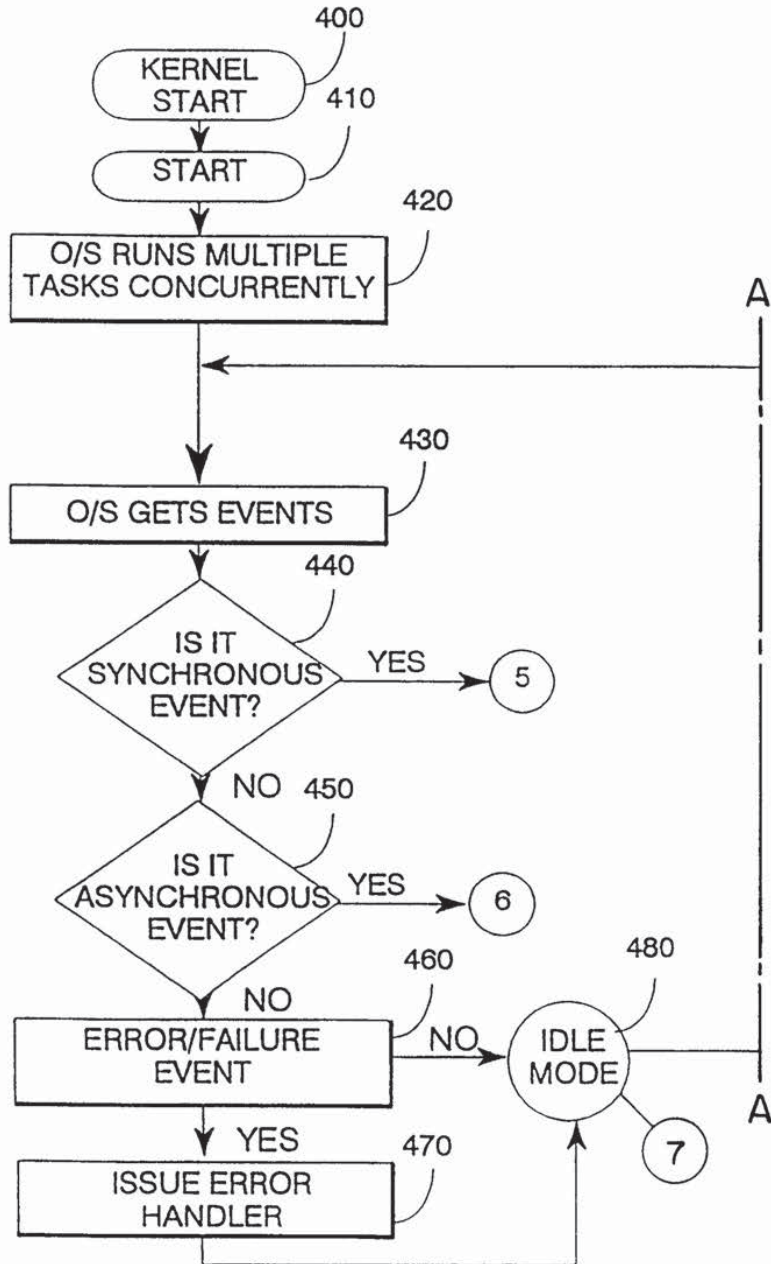


FIG. 3b

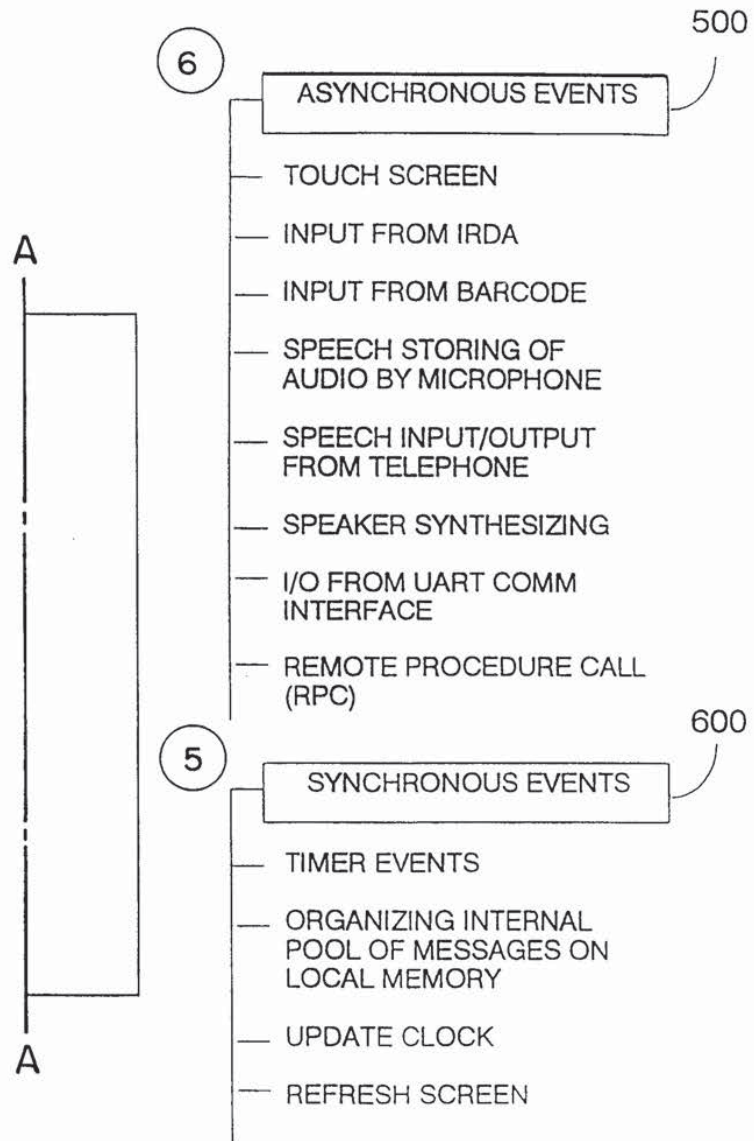


FIG. 4

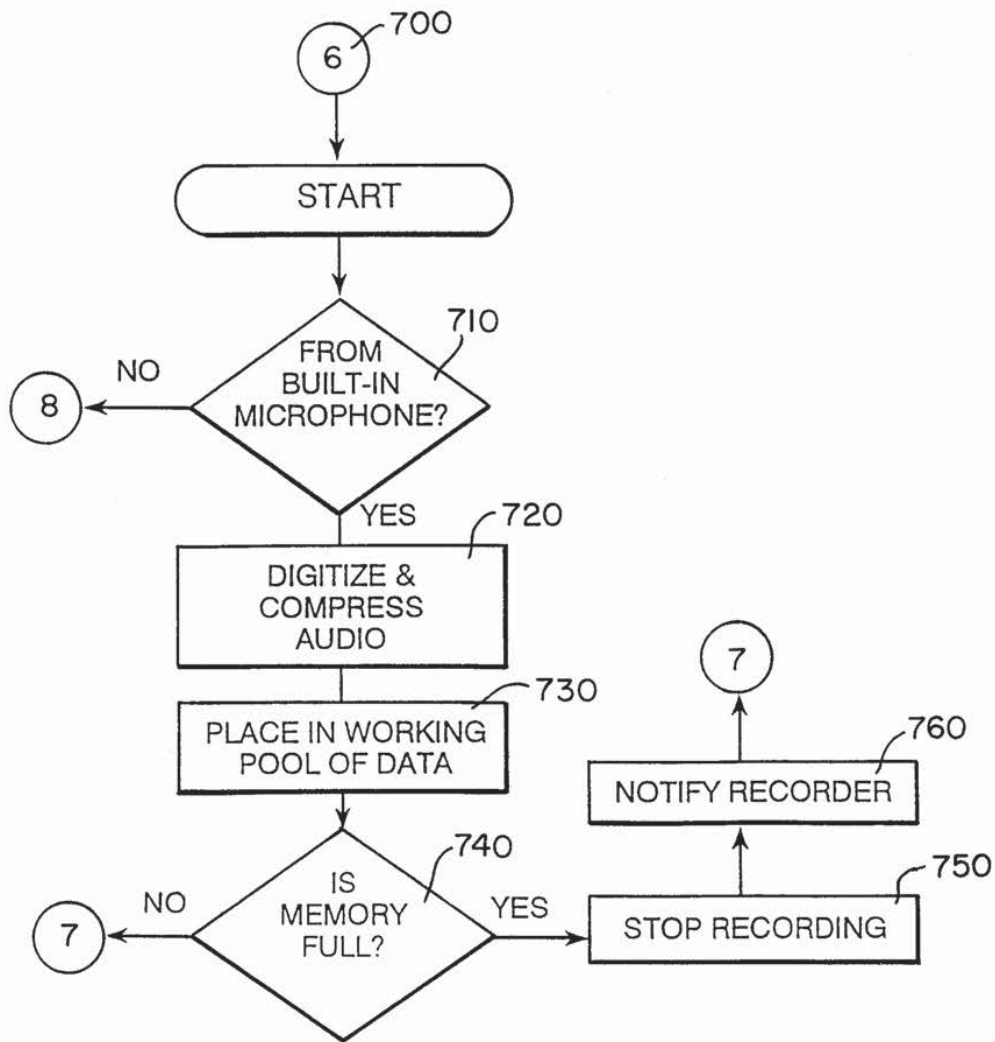
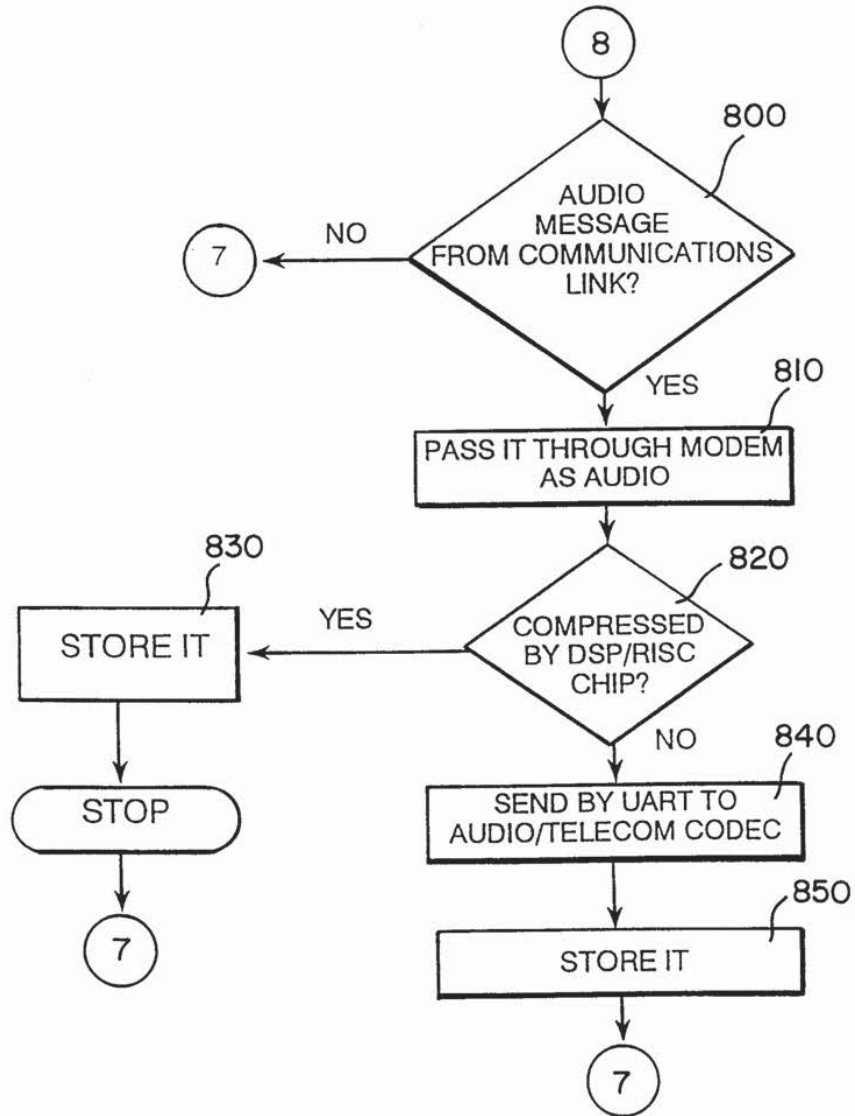


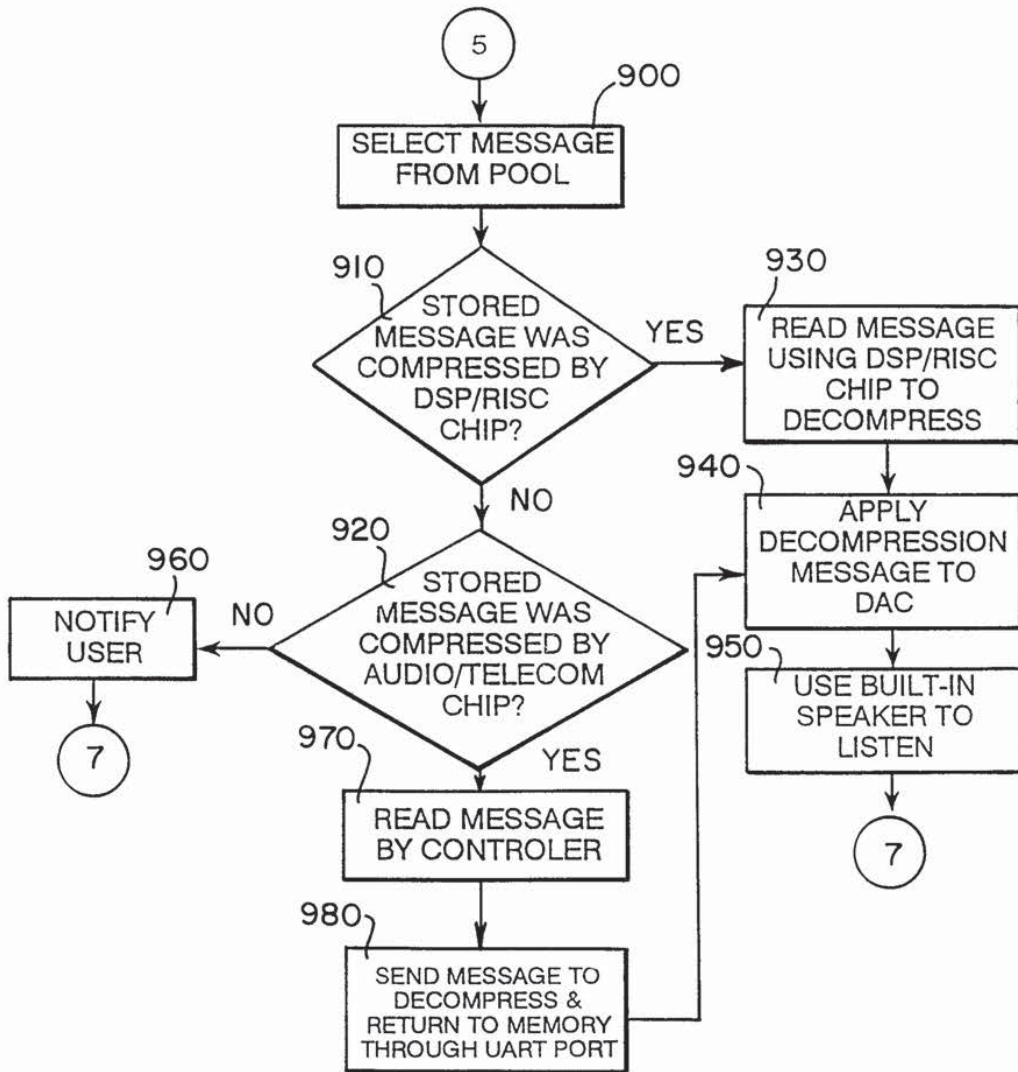


FIG. 5



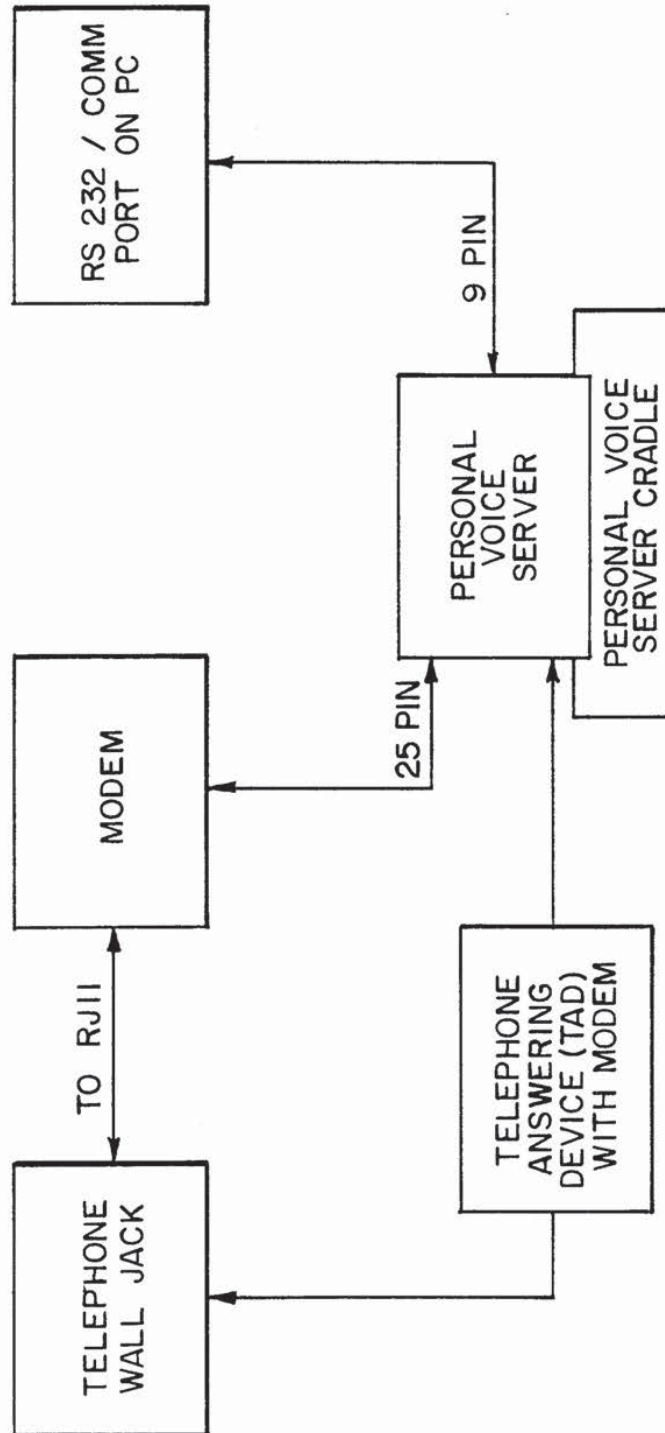
9/10

FIG. 6



10/10

FIG. 7



SUBSTITUTE SHEET (RULE 26)

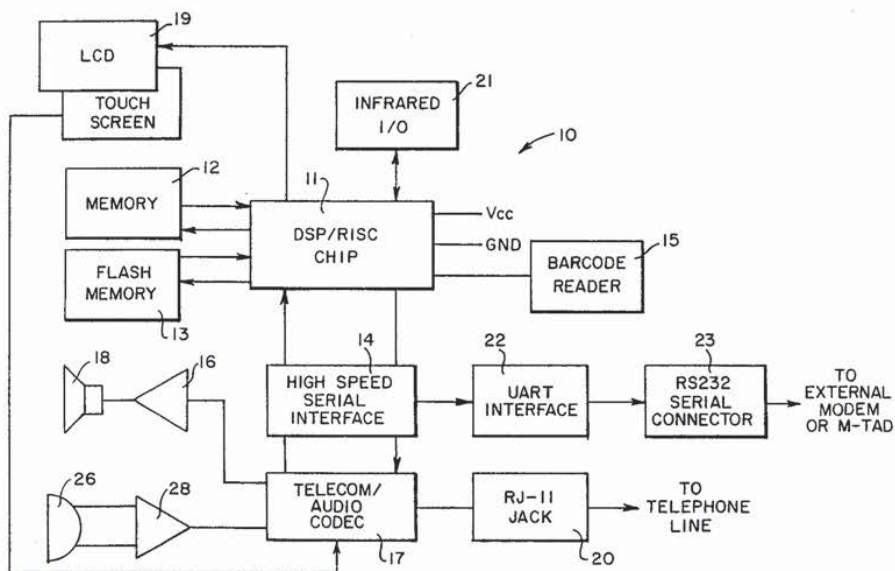




INTERNATIONAL APPLICATION PUBLISHED UNDER THE PATENT COOPERATION TREATY (PCT)

(51) International Patent Classification <sup>6</sup> : <b>H04N 1/100, H04M 11/00, 11/06</b>		A3	(11) International Publication Number: <b>WO 98/47252</b>	
			(43) International Publication Date: 22 October 1998 (22.10.98)	
(21) International Application Number: PCT/US98/07228			(81) Designated States: AL, AM, AT, AU, AZ, BA, BB, BG, BR, BY, CA, CH, CN, CU, CZ, DE, DK, EE, ES, FI, GB, GE, GW, HU, ID, IL, IS, JP, KE, KG, KP, KR, KZ, LC, LK, LR, LS, LT, LU, LV, MD, MG, MK, MN, MW, MX, NO, NZ, PL, PT, RO, RU, SD, SE, SG, SI, SK, SL, TJ, TM, TR, TT, UA, UG, US, UZ, VN, YU, ZW, ARIPO patent (GH, GM, KE, LS, MW, SD, SZ, UG, ZW), Eurasian patent (AM, AZ, BY, KG, KZ, MD, RU, TJ, TM), European patent (AT, BE, CH, CY, DE, DK, ES, FI, FR, GB, GR, IE, IT, LU, MC, NL, PT, SE), OAPI patent (BF, BJ, CF, CG, CI, CM, GA, GN, ML, MR, NE, SN, TD, TG).	
(22) International Filing Date: 11 April 1998 (11.04.98)				
(30) Priority Data: 60/043,302 11 April 1997 (11.04.97) US				
(71)(72) Applicant and Inventor: STERN, Geoffrey [US/US]; 9 Apache Trail, Westport, CT 06880 (US).				
(72) Inventor; and (75) Inventor/Applicant (for US only): WEXLER, Gil [IL/IL]; Beeri Street 54, 64233 Tel Aviv (IL).				Published With international search report.
(74) Agents: LERCH, Joseph, B. et al.; Darby & Darby P.C., 805 Third Avenue, New York, NY 10022-7513 (US).				
		(88) Date of publication of the international search report: 27 July 2000 (27.07.00)		

(54) Title: PERSONAL AUDIO MESSAGE PROCESSOR AND METHOD



(57) Abstract

A portable device is disclosed which permits the user to record, edit, play and review voice messages and other audio material which may be received from, and subsequently transmitted to, a remote voice processing or interactive voice (IVR) host computer over a communication link. A preferred device contains its own power source, integrated circuitry (11) and control buttons to permit the localized recording, editing storage and playback of audio signals through a built in speaker (18), microphone (26) and removable memory card. The device also contains a standard RT-11 telephone jack (20), modem chip and control of audio signals to and from a host computer. The device contains circuitry which permits it to transmit and receive audio signals at a rate substantially faster than originally recorded.

*FOR THE PURPOSES OF INFORMATION ONLY*

Codes used to identify States party to the PCT on the front pages of pamphlets publishing international applications under the PCT.

AL	Albania	ES	Spain	LS	Lesotho	SI	Slovenia
AM	Armenia	FI	Finland	LT	Lithuania	SK	Slovakia
AT	Austria	FR	France	LU	Luxembourg	SN	Senegal
AU	Australia	GA	Gabon	LV	Latvia	SZ	Swaziland
AZ	Azerbaijan	GB	United Kingdom	MC	Monaco	TD	Chad
BA	Bosnia and Herzegovina	GE	Georgia	MD	Republic of Moldova	TG	Togo
BB	Barbados	GH	Ghana	MG	Madagascar	TJ	Tajikistan
BE	Belgium	GN	Guinea	MK	The former Yugoslav Republic of Macedonia	TM	Turkmenistan
BF	Burkina Faso	GR	Greece	ML	Mali	TR	Turkey
BG	Bulgaria	HU	Hungary	MN	Mongolia	TT	Trinidad and Tobago
BJ	Benin	IE	Ireland	MR	Mauritania	UA	Ukraine
BR	Brazil	IL	Israel	MW	Malawi	UG	Uganda
BY	Belarus	IS	Iceland	MX	Mexico	US	United States of America
CA	Canada	IT	Italy	NE	Niger	UZ	Uzbekistan
CF	Central African Republic	JP	Japan	NL	Netherlands	VN	Viet Nam
CG	Congo	KE	Kenya	NO	Norway	YU	Yugoslavia
CH	Switzerland	KG	Kyrgyzstan	NZ	New Zealand	ZW	Zimbabwe
CI	Côte d'Ivoire	KP	Democratic People's Republic of Korea	PL	Poland		
CM	Cameroon	KR	Republic of Korea	PT	Portugal		
CN	China	KZ	Kazakstan	RO	Romania		
CU	Cuba	LC	Saint Lucia	RU	Russian Federation		
CZ	Czech Republic	LI	Liechtenstein	SD	Sudan		
DE	Germany	LK	Sri Lanka	SE	Sweden		
DK	Denmark	LR	Liberia	SG	Singapore		
EE	Estonia						

## INTERNATIONAL SEARCH REPORT

International application No.  
PCT/US98/07228

<b>A. CLASSIFICATION OF SUBJECT MATTER</b>		
IPC(6) :H04N 1/100; H04M 11/00, 11/06 US CL :379/88.13, 93.24, 100.08; 395/200.33, 200.34, 200.36 According to International Patent Classification (IPC) or to both national classification and IPC		
<b>B. FIELDS SEARCHED</b>		
Minimum documentation searched (classification system followed by classification symbols) U.S. : 379/88.13, 93.24, 100.08; 395/200.33, 200.34, 200.36		
Documentation searched other than minimum documentation to the extent that such documents are included in the fields searched		
Electronic data base consulted during the international search (name of data base and, where practicable, search terms used) APS		
<b>C. DOCUMENTS CONSIDERED TO BE RELEVANT</b>		
Category*	Citation of document, with indication, where appropriate, of the relevant passages	Relevant to claim No.
A	US 5,608,786 A (GORDON) 04 March 1997	1, 10, 16, 19, 20
A	US 5,479,411 A (KLEIN) 26 December 1995	1, 10, 16
A,E	US 5,768,513 A (KUTHYAR ET AL.) 16 June 1998	1, 10, 16
A,P	US 5,732,216 A (LOGAN ET AL.) 24 March 1998	1-23
<input type="checkbox"/> Further documents are listed in the continuation of Box C. <input type="checkbox"/> See patent family annex.		
* Special categories of cited documents:	*T*	later document published after the international filing date or priority date and not in conflict with the application but cited to understand the principle or theory underlying the invention
*A* document defining the general state of the art which is not considered to be of particular relevance	*X*	document of particular relevance; the claimed invention cannot be considered novel or cannot be considered to involve an inventive step when the document is taken alone
*E* earlier document published on or after the international filing date	*Y*	document of particular relevance; the claimed invention cannot be considered to involve an inventive step when the document is combined with one or more other such documents, such combination being obvious to a person skilled in the art
*L* document which may throw doubts on priority claim(s) or which is cited to establish the publication date of another citation or other special reason (as specified)	*Z*	document member of the same patent family
*O* document referring to an oral disclosure, use, exhibition or other means		
*P* document published prior to the international filing date but later than the priority date claimed		
Date of the actual completion of the international search 21 SEPTEMBER 1998	Date of mailing of the international search report 21 OCT 1998	
Name and mailing address of the ISA/US Commissioner of Patents and Trademarks Box PCT Washington, D.C. 20231 Facsimile No. (703) 305-3230	Authorized officer KENNETH VANDERPUYE <i>Jon Kild</i> Telephone No. (703) 308-7828	

Form PCT/ISA/210 (second sheet)(July 1992)\*