



US009414199B2

(12) **United States Patent**  
**Etchegoyen**

(10) **Patent No.:** **US 9,414,199 B2**  
(45) **Date of Patent:** **Aug. 9, 2016**

(54) **PREDICTIVE DELIVERY OF INFORMATION  
BASED ON DEVICE HISTORY**

(56) **References Cited**

U.S. PATENT DOCUMENTS

(71) Applicant: **Uniloc Luxembourg S.A.**, Luxembourg (LU)

6,151,631	A	11/2000	Ansell et al.
7,057,556	B2	6/2006	Hall et al.
7,091,851	B2	8/2006	Mason et al.
7,826,409	B2	11/2010	Mock et al.
8,320,938	B2	11/2012	Meyer et al.
8,606,220	B2	12/2013	Soliman et al.

(72) Inventor: **Craig S. Etchegoyen**, Plano, TX (US)

(73) Assignee: **Uniloc Luxembourg S.A.**, Luxembourg (LU)

2003/0046022	A1	3/2003	Silverman
2003/0134648	A1	7/2003	Reed et al.
2003/0176196	A1	9/2003	Hall et al.
2003/0222820	A1	12/2003	Karr et al.
2004/0002346	A1	1/2004	Santhoff
2004/0198392	A1	10/2004	Harvey et al.
2005/0070306	A1	3/2005	Kim et al.
2005/0249175	A1*	11/2005	Nasu et al. .... 370/338

(\* ) Notice: Subject to any disclaimer, the term of this patent is extended or adjusted under 35 U.S.C. 154(b) by 135 days.

(21) Appl. No.: **14/188,063**

(Continued)

(22) Filed: **Feb. 24, 2014**

FOREIGN PATENT DOCUMENTS

(65) **Prior Publication Data**

US 2014/0258471 A1 Sep. 11, 2014

EP	1 739 879	A1	1/2007
EP	2 096 597	A2	9/2009

(Continued)

**Related U.S. Application Data**

*Primary Examiner* — Viet Vu

(60) Provisional application No. 61/774,305, filed on Mar. 7, 2013.

(74) *Attorney, Agent, or Firm* — Sean D. Burdick

(30) **Foreign Application Priority Data**

Jun. 7, 2013 (AU) ..... 2013100804

(57) **ABSTRACT**

(51) **Int. Cl.**

<b>H04W 4/02</b>	(2009.01)
<b>H04W 4/14</b>	(2009.01)
<b>H04W 4/20</b>	(2009.01)

A server sends information to user devices based on not only the current location of those devices but also predicted future locations of those devices. A number of actions are associated with one or more predetermined locations, a predetermined maximum amount of time, and a predetermined minimum likelihood. When the server determines that a given user device is likely to be in one of the predetermined locations within the predetermined maximum amount of time with at least the predetermined minimum likelihood, the server performs the associated acts with respect to the user device. An example of such an action is sending a promotion or advertisement to the user device, e.g., as an SMS message.

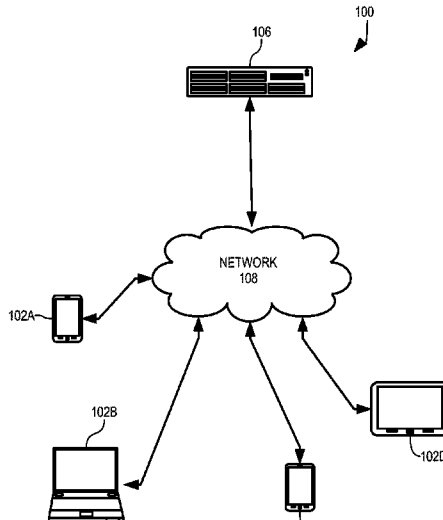
(52) **U.S. Cl.**

CPC ..... **H04W 4/028** (2013.01); **H04W 4/14** (2013.01); **H04W 4/206** (2013.01)

(58) **Field of Classification Search**

USPC ..... 709/204, 217, 219, 223, 224  
See application file for complete search history.

**5 Claims, 6 Drawing Sheets**



(56)

**References Cited**

U.S. PATENT DOCUMENTS

2006/0270421 A1 11/2006 Phillips et al.  
2007/0197229 A1 8/2007 Kalliola et al.  
2007/0270164 A1 11/2007 Maier et al.  
2008/0085727 A1 4/2008 Kratz  
2008/0102957 A1 5/2008 Burman et al.  
2008/0155094 A1 6/2008 Roese et al.  
2008/0167896 A1 7/2008 Fast et al.  
2008/0233956 A1 9/2008 Wyk et al.  
2009/0319177 A1\* 12/2009 Khosravy et al. .... 701/207

2010/0087166 A1 4/2010 Agashe  
2011/0010245 A1\* 1/2011 Priebsch et al. .... 705/14.58  
2011/0196711 A1 8/2011 Craig et al.  
2012/0271884 A1\* 10/2012 Holmes et al. .... 709/204  
2013/0036165 A1\* 2/2013 Tseng et al. .... 709/204

FOREIGN PATENT DOCUMENTS

EP 2 182 752 5/2010  
EP 2 287 820 2/2011  
WO WO 2008/055865 5/2008

\* cited by examiner

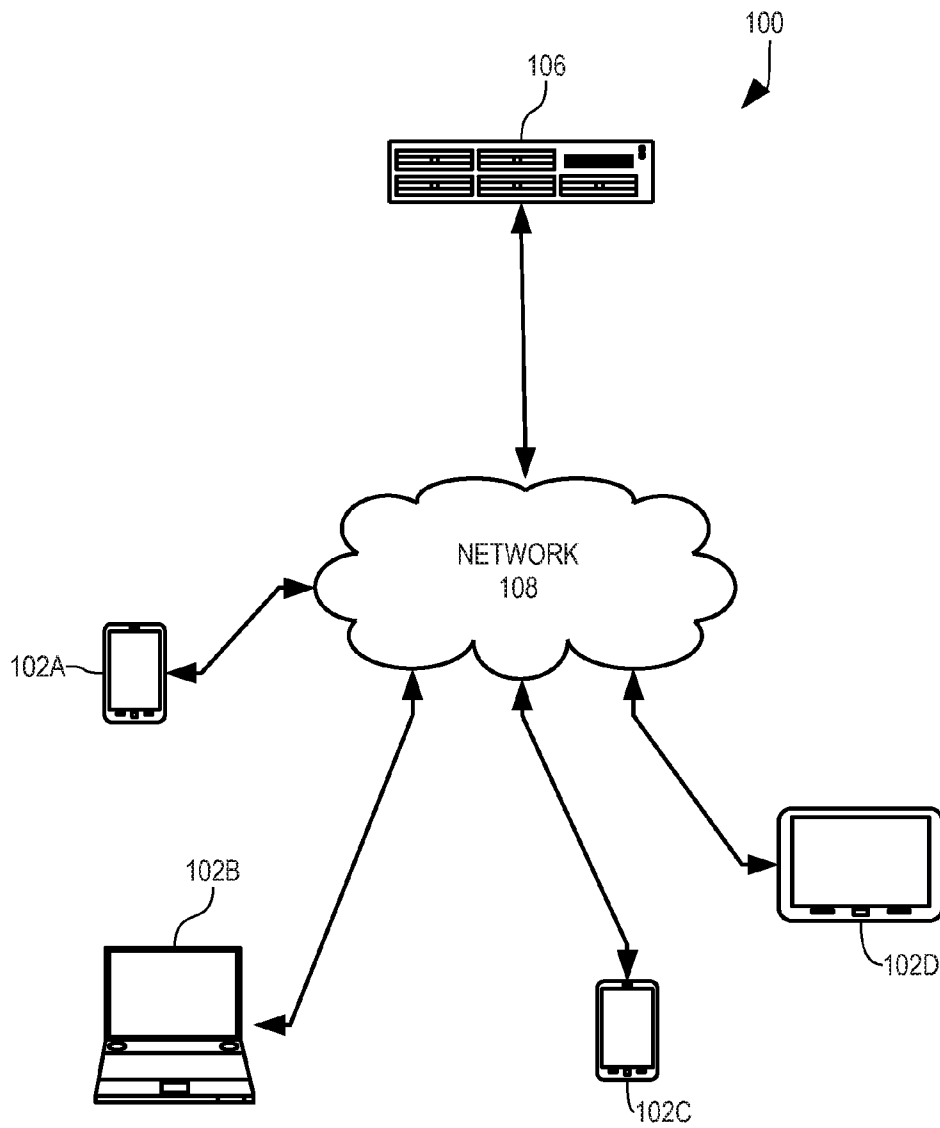


FIGURE 1

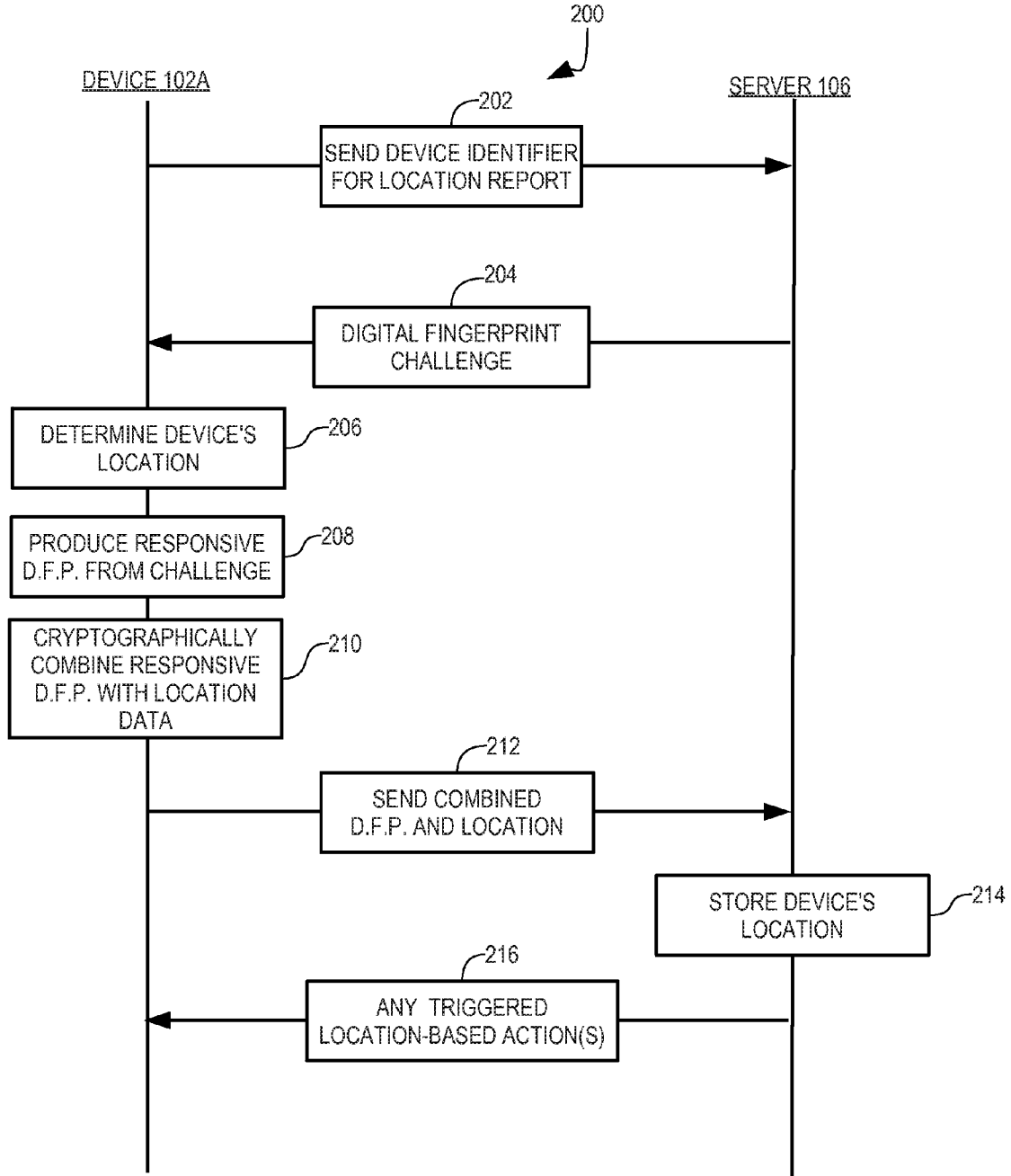


FIGURE 2

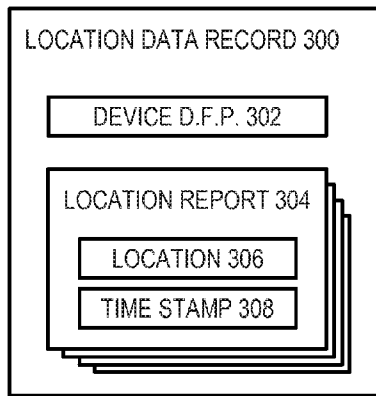


FIGURE 3

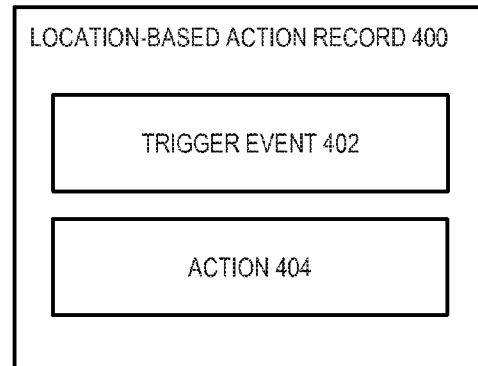


FIGURE 4

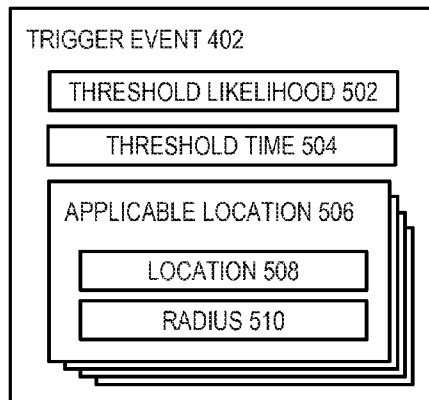


FIGURE 5

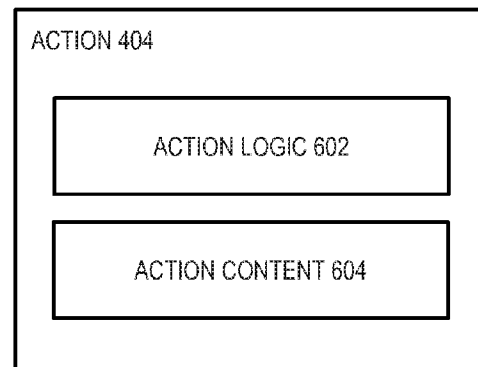


FIGURE 6

# Explore Litigation Insights

Docket Alarm provides insights to develop a more informed litigation strategy and the peace of mind of knowing you're on top of things.

## Real-Time Litigation Alerts



Keep your litigation team up-to-date with **real-time alerts** and advanced team management tools built for the enterprise, all while greatly reducing PACER spend.

Our comprehensive service means we can handle Federal, State, and Administrative courts across the country.

## Advanced Docket Research



With over 230 million records, Docket Alarm's cloud-native docket research platform finds what other services can't. Coverage includes Federal, State, plus PTAB, TTAB, ITC and NLRB decisions, all in one place.

Identify arguments that have been successful in the past with full text, pinpoint searching. Link to case law cited within any court document via Fastcase.

## Analytics At Your Fingertips



Learn what happened the last time a particular judge, opposing counsel or company faced cases similar to yours.

Advanced out-of-the-box PTAB and TTAB analytics are always at your fingertips.

## API

Docket Alarm offers a powerful API (application programming interface) to developers that want to integrate case filings into their apps.

## LAW FIRMS

Build custom dashboards for your attorneys and clients with live data direct from the court.

Automate many repetitive legal tasks like conflict checks, document management, and marketing.

## FINANCIAL INSTITUTIONS

Litigation and bankruptcy checks for companies and debtors.

## E-DISCOVERY AND LEGAL VENDORS

Sync your system to PACER to automate legal marketing.