

Amelioration of Experimental Autoimmune Encephalomyelitis in Lewis Rats by FTY720 Treatment

MASAYUKI FUJINO, NAOKO FUNESHIMA, YUSUKE KITAZAWA, HIROMITSU KIMURA, HIROSHI AMEMIYA, SEIICHI SUZUKI, and XIAO-KANG LI

Laboratory of Transplantation Immunology, Department of Innovative Surgery, National Research Institute for Child Health and Development, Tokyo, Japan

Received October 18, 2002; accepted January 8, 2003

ABSTRACT

Experimental autoimmune encephalomyelitis (EAE) is a T-cell-dependent autoimmune disease that reproduces the inflammatory demyelinating pathology of multiple sclerosis (MS). We investigated the efficacy and mechanism of immunosuppression against EAE by administering 2-amino-[2-(4-octylphenyl)ethyl]-1,3-propanediol hydrochloride (FTY720) in Lewis rats immunized with myelin basic protein together with complete Freund's adjuvant. FTY720 treatment almost completely protected the rats against disease. The protection by FTY720 was associated with a dramatic reduction in the number of lymphocytes staining for T-cell receptors in the spinal cord as examined by immunohistochemistry. The mRNA expression of Th1

cytokines interleukin (IL)-2, IL-6, and interferon- γ in the spinal cord was also reduced dramatically as assessed by reverse-transcription polymerase chain reaction. Furthermore, lymphocytes isolated from the spleen of FTY720-treated rats were transferred into naive recipient rats against EAE manifestation by reducing both disease incidence and clinical score. These results suggested that the protective anti-inflammatory effect of treatment with FTY720 was, to a large extent, due to the inhibition of encephalitogenic T-cell responses and/or their migration into the central nervous system and may be a potential candidate for use in treating patients with MS.

Multiple sclerosis (MS) is a common and often disabling disease of the central nervous system (CNS). The early active MS lesions are characterized by the presence of mononuclear cell infiltrates around venules and small veins, followed by myelin breakdown and astrogliosis, resulting in irreversible disability. The etiology of the disease remains uncertain but is widely considered to involve organ-specific autoimmune destruction of CNS myelin.

Acute experimental autoimmune encephalomyelitis (EAE), an inflammatory disease of the CNS, has been widely used as an animal model for testing novel therapeutic approaches for MS. The disease can be induced in different species of labo-

ratory animals by injecting central nervous tissue antigens emulsified in an appropriate adjuvant, e.g., complete Freund's adjuvant (CFA). In Lewis rats, a susceptible strain, EAE is manifested by a paralytic attack that affects the tail and hind limbs 11 to 14 days after injection of guinea pig myelin basic protein (MBP) as an encephalitogenic antigen. Consistent with this, EAE can also be induced in naive animals by transferring MBP-activated T cells. The initial observation by Paterson (1960) that the autoimmune disease EAE could be induced by transferring lymphocytes from activate-sensitized rats to naive histocompatible recipients confirmed the condition to be principally an immune cell-mediated phenomenon. Others also reported that relatively small numbers of spleen cells have transferred full clinical signs of EAE if cultured with mitogen concanavalin A (Con A) (Panitch and McFarlin, 1977) or with the antigen MBP before transfer (Richert et al., 1979).

Clinically, the disease follows an acute and monophasic course. The main pathological event is the appearance of inflammatory cell infiltrates forming perivascular cuffs. The

This study was supported by research grants from the Ministry of Health, Labor, and Welfare of Japan (12-KO-2, Millennium Project H12-Saisei-016) and a grant-in-aid (10307030) and a grant for Organized Research Combination System from the Ministry of Education, Culture, Sports, Science, and Technology of Japan.

M.F. and N.F. contributed equally to this work.

Article, publication date, and citation information can be found at <http://jpet.aspetjournals.org>.

DOI: 10.1124/jpet.102.045658.

ABBREVIATIONS: MS, multiple sclerosis; CNS, central nervous system; EAE, experimental autoimmune encephalomyelitis; CFA, complete Freund's adjuvant; MBP, myelin basic protein; Con A, concanavalin A; FTY720, 2-amino-[2-(4-octylphenyl)ethyl]-1,3-propanediol hydrochloride; CsA, cyclosporin A; FK506, tacrolimus; IL, interleukin; INF- γ , interferon- γ ; PBS, phosphate-buffered saline; TdT, terminal deoxynucleotidyl transferase; RT-PCR, Reverse-transcription polymerase chain reaction; bp, base pair; TUNEL, terminal deoxynucleotidyl transferase dUTP nick-end labeling; S1P, sphingosine 1-phosphate; ISP-1, ((2S,3R,4R)-(E)-2-3,4-dihydroxymethyl-14-oxoicos-6-enoic acid, myriocin = thermozy-mocidin).

inflammatory infiltrates in acute EAE and MS contain predominantly a diverse accumulation of T cells, macrophages, and some B cells. Pharmacological studies using both the active and adoptive models of EAE have provided useful information on the mechanisms by which steroid and non-steroid immunomodulatory drugs may act and be of potential value in treating MS.

A potent immunosuppressive compound, ISP-1, and its derivatives, mycestericins, were isolated from the culture broth of *Isaria sinclairii*, a species of vegetative wasp (Fujita et al., 1994a). Chemical modification of ISP-1 led to a novel synthetic immunosuppressant, FTY720, which has more potent immunosuppressive activity and less toxicity than ISP-1 (Fujita et al., 1994b). FTY720 administered at 0.1 mg/kg or more significantly prolonged the survival of skin, cardiac, liver, renal, pancreas, lung, and small bowel allografts in rats (Brinkmann et al., 2001). Furthermore, FTY720 combined with cyclosporin A (CsA) or tacrolimus (FK506) produced synergistic immunosuppressive effects (Yanagawa et al., 1998).

A striking feature of FTY720 is that it induces a marked decrease in the number of peripheral blood lymphocytes, especially T cells, at doses that prolong allograft survival (Hoshino et al., 1996). A recent article showed that FTY720 selectively induces cell death in mature T-lymphocyte, especially CD4-positive cells, in peripheral blood without depressing bone marrow (Enosawa et al., 1996). It has been hypothesized that apoptotic cell death of lymphocytes and acceleration of lymphocyte homing decrease the number of lymphocytes (Suzuki et al., 1996b; Chiba et al., 1998; Yanagawa et al., 1998).

Recently, Brinkmann et al. (2002) reported that FTY720 prevented development of EAE in Wister rats. We attempted to confirm and extend their findings by evaluating the suppressive effects of FTY720 on EAE in Lewis rats, which have presented evidence that the immune and neuroendocrine system can contribute to susceptibility to inflammatory autoimmune disease (MacPhee and Mason, 1988). In the present study, we show that oral administration of FTY720 almost completely protected rats immunized with MBP/CFA against EAE, resulting in a dramatic reduction of leukocyte infiltration into the CNS and decreased expression of IL-2, IL-6, and INF- γ in the CNS. Furthermore, the capacity to generate disease could be inhibited when isolated spleen cells were transferred from FTY720-treated rats to naive Lewis rats.

Materials and Methods

Animals. We purchased 250- to 280-g, 10-week-old, male inbred Lewis rats from Shizuoka Laboratory Animal Center (Shizuoka, Japan). All animals were provided water and food ad libitum and were housed in accordance with institutional animal care policies.

Induction of Acute EAE. The methods of acute EAE induction were similar to those published previously (Schmitz et al., 1991). We emulsified MBP (kindly provided by Dr. W. F. Hickey; Department of Pathology, Dartmouth Medical School, Dartmouth Hitchcock Medical Center, Lebanon, NH) in 0.9% saline in an equal volume of complete Freund's adjuvant (ICN Biomedicals, Inc., Aurora, OH) containing 4 mg/ml of heat-inactivated *Mycobacterium butyricum* (Difco, Detroit, MI) and then immunized male Lewis rats with 0.1 ml of emulsion subcutaneously on the dorsum of two sides of the tail.

Induction of Adoptive Transferred EAE. For adoptive transferred EAE, we immunized rats with MBP, as described above. Fourteen days later, we prepared spleen cell suspensions from the actively EAE-induced Lewis rats with FTY720- and saline-treated control by Ficoll Isopaque (Lympholyte-Rat, CEDARLANE LABORATORIES Ltd., ON, Canada) density-gradient centrifugation. We harvested interface layer cells, washed them twice in PBS, and then used these cells, consisting of lymphocytes, for the following procedure. We cultured isolated erythrocyte-free lymphocyte suspensions from the immunized rats for 2 days with 50 μ g/ml Con A (Wako Pure Chemicals, Osaka, Japan). After washing them with RPMI 1640 (Sigma-Aldrich, St. Louis, MO), we injected 6×10^6 cells into naive Lewis rats.

Chemical Compound. FTY720, a gift from Yoshitomi Pharmaceutical Industries (Osaka, Japan), was dissolved in physiological saline.

Treatment Schedule of Rats. The rats were treated with either FTY720 (1 mg/kg/day) or saline. The drug was given orally once a day on days 0 to 14 after immunization with MBP.

Specimens. Three animals from each group were sacrificed under ether anesthesia on days 7, 14, 21, and 28 after sensitization. The spinal cord and spleen were removed quickly. Blocks up to 1 cm³ were embedded in optimal cutting temperature compound (Tissue-Tek, Elkhardt, IN) and snap frozen in isopentane, which was precooled in acetone and dry ice, and 6- μ m frozen sections were cut in a cryostat for DNA fragmentation analysis and immunohistology. A second portion of the spinal cord and spleen was immediately snap-frozen for subsequent molecular analyses, and a third portion of the samples was fixed in 10% neutral buffered formalin for neuropathology.

Clinical Grading of EAE. Rats were evaluated daily and graded by a blinded investigator according to the following scale: grade 0 = no signs; grade 1 = limp tail; grade 2 = hind limb weakness sufficient to impair righting; grade 3 = paraplegia; and grade 4 = paraplegia with forelimb weakness, moribund condition.

In Situ Assay for DNA Fragmentation. As previously described (Li et al., 2001), we used Apop Tag Plus Kit (Oncor, Gaithersburg, MD), which uses certain reagents for nonisotopic DNA end-extension in situ and other reagents for immunohistochemical staining of the extended DNA technique, to detect DNA fragmentation. Briefly, we cut cryosections (6 μ m), fixed them in 10% neutral buffered formalin in a Coplin jar, and quenched them in 0.5 to 1% hydrogen peroxide in PBS for 5 min at room temperature. We then incubated each section with a working strength terminal deoxynucleotidyl transferase (TdT) reaction mixture consisting of 38 μ l of reaction buffer and 16 μ l of TdT enzyme in a humidified chamber at 37°C for 1 h and terminated the reaction with a prewarmed working strength stop/wash buffer for 30 min at 37°C. To visualize incorporated TdT, we incubated sections with peroxidase-conjugated anti-digoxigenin antibody for 30 min at room temperature, washed them three times in a Coplin jar, and incubated them with 4-dimethylaminoazobenzene substrate working solution for 3 to 6 min at room temperature. The reaction was terminated by washing with H₂O, and sections were counterstained with methyl green and mounted. Negative controls were prepared by substituting PBS for the TdT enzyme in the reaction mixture.

Reverse-Transcription Polymerase Chain Reaction (RT-PCR). We extracted total cellular RNA from frozen spinal cord and spleen tissue by using ISOGEN (Nippon Gene, Tokyo, Japan), as described previously (Li et al., 2001), and confirmed the RNA quality on formaldehyde-agarose gels. One microgram of total RNA was used for first-strand cDNA synthesis in 20 μ l of 100 mM Tris-HCl, 500 mM KCl, 5 mM MgCl₂, 1 mM dNTP, 1 U/ μ l RNase inhibitor, random 9-mer primer, and 0.25 U/ μ l avian myeloblastosis virus reverse transcriptase (Takara, Shiga, Japan). We performed PCR amplification in a 100- μ l reaction mixture containing 200 μ M of each of the regular dNTPs, 10 pmol of each primer, and 2.5 U of TaqDNA

CAGCTGTTGCT GGA CTTACAGG-3' and 5'-CACAGTTGATGGCT-CATCATCG-3'; IL-6 (294 bp), 5'-GACTTCACAGAGGATACCC-3' and 5'-TAAGTTGTTCTTCACAAACTCC-3'; INF- γ (310 bp), 5'-GGATATCTGGAGGAAGCTGGCAAAG-3' and 5'-GCTAGATT CTG-GTGACAGCTGGTG-3'; β -actin (461 bp) 5'-CATCGTGGGCCGCT-CTAGGCA-3' and 5'-CCGGCCAGCCAAGTCCAGACGC-3'. We used the TaKaRa Thermal Cycler 480 PCR system (Takara, Shiga, Japan) and the "hot start" technique to increase specificity. The thermal cycling parameters were denaturation at 94°C for 30 s, annealing at 60°C for 30 s, and extension for 90 s at 72°C (40 cycles). PCR products (10 μ l) were analyzed on 1 to 1.8% agarose gels. We visualized prominent bands of the correct size with ethidium bromide staining and measured the intensity of each band by a compact digital camera (DC40) with analysis software (BioMax 1D image analysis software; Eastman Kodak Co., Rochester, NY), as described in a previous article (Li et al., 2001). The relative quantities of genes are presented as the ratio between the intensity of IL-2, IL-6, or INF- γ band and that of the housekeeping gene β -actin.

Immunohistology and Neuropathology. We characterized the cells with monoclonal antibodies R73 (α/β T-cell receptor) to evaluate T-cell infiltrates (Serotec, Oxford, UK), air-dried the slides, fixed them in acetone at -20°C overnight, and then air-dried them for 1 h. The primary antibody consisted of mouse IgG1 isotype diluted to 1:50 in a solution containing 2% bovine serum albumin and 0.1% sodium azide in PBS. The second antibody consisted of goat antibody to mouse IgG conjugated to alkaline phosphatase (Santa Cruz Biochemicals, Santa Cruz, CA), diluted at 1:100 in the above working solution. Color development was performed with an alkaline phosphatase substrate kit (Vector Laboratories, Inc., Burlingame, CA). We obtained an optimum section morphology when the sections were air dried for 1 h before counterstaining in hematoxylin (Sigma-Aldrich).

Statistical Analyses. Recipient survival times were compared among the groups by Gehan's generalized Wilcoxon test. Comparisons of the mean day of onset of disease and mean peak disease severity between any two groups of rats were analyzed by the Student's *t* test; *P* values less than 0.05 were considered significant.

Results

Effect of FTY720 on Lewis EAE Rats. A total of 51 rats (22 FTY720-treated and 29 saline-treated) were used in these studies. The treated and control groups were compared with regard to maximal clinical score and time to clinical onset of EAE. The results showed that 40% of the rats died after EAE induction. FTY720 administration, however, almost completely prevented EAE-induced rat death (Fig. 1A). The difference in maximum clinical score between FTY720 and control groups was significant, with *P* < 0.0001 using the Student's *t* test. FTY720-treated rats were less subject to EAE induction than saline-treated rats (Fig. 1, B and C). Furthermore, FTY720 treatment also prevented the decrease of body weight in EAE rats (Fig. 1D) in addition to reducing the clinical score.

Effect of FTY720 on the Formation of Inflammatory Lesions in the CNS. We performed histological studies of spinal cords to investigate the effect of FTY720 blockade on the formation of inflammatory lesions in the CNS. As shown in Fig. 2, A–D, inflammatory lesions were readily detectable in control rats, whereas the spinal cords from rats administered FTY720 exhibited a complete absence of inflammatory-cell infiltrates.

Effect of FTY720 on the Infiltration of T Lymphocytes. In EAE, MBP-specific T lymphocytes attack the my-

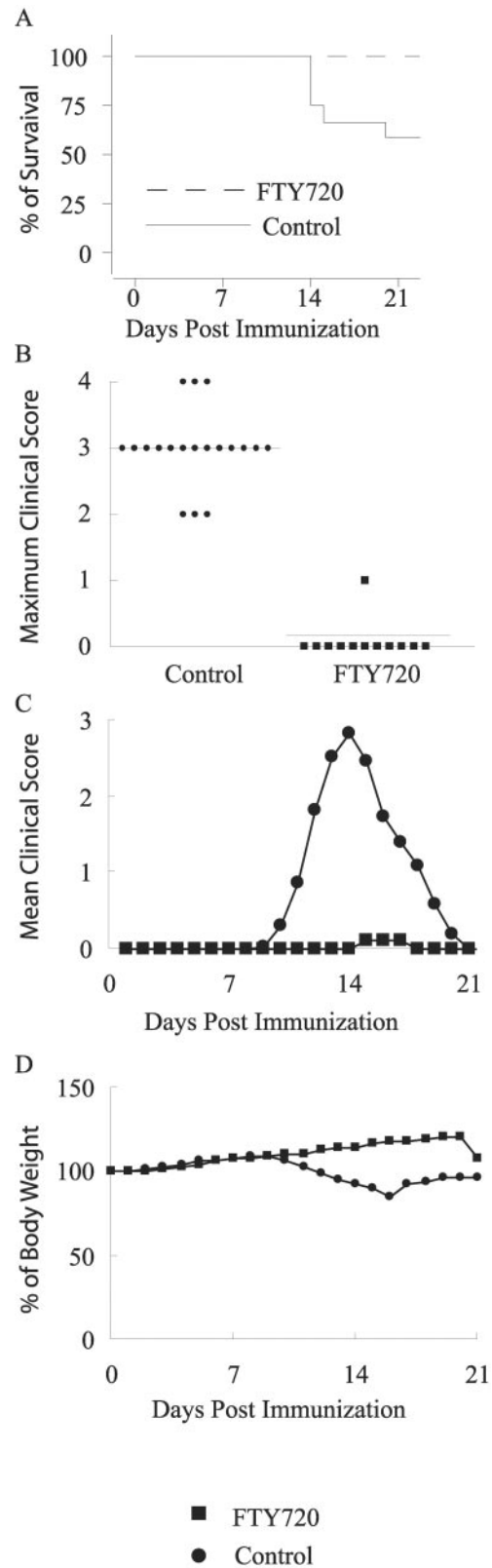


Fig. 1. Suppression of acute EAE in the Lewis rat by FTY720. Rats were immunized with MBP/CFA to induce EAE, as described under *Materials and Methods*. FTY720 (squares) or control (circles) saline was given daily by oral administration at 1 mg/kg/day. A, survival (*n* = 6/FTY720; *n* = 6/control); B, maximum clinical score (*n* = 12/FTY720; *n* = 19/control); C, mean clinical score (*n* = 23/FTY720; *n* = 16/control); D, body weight loss (*n* = 23/FTY720; *n* = 16/control). Data compiled from four separate

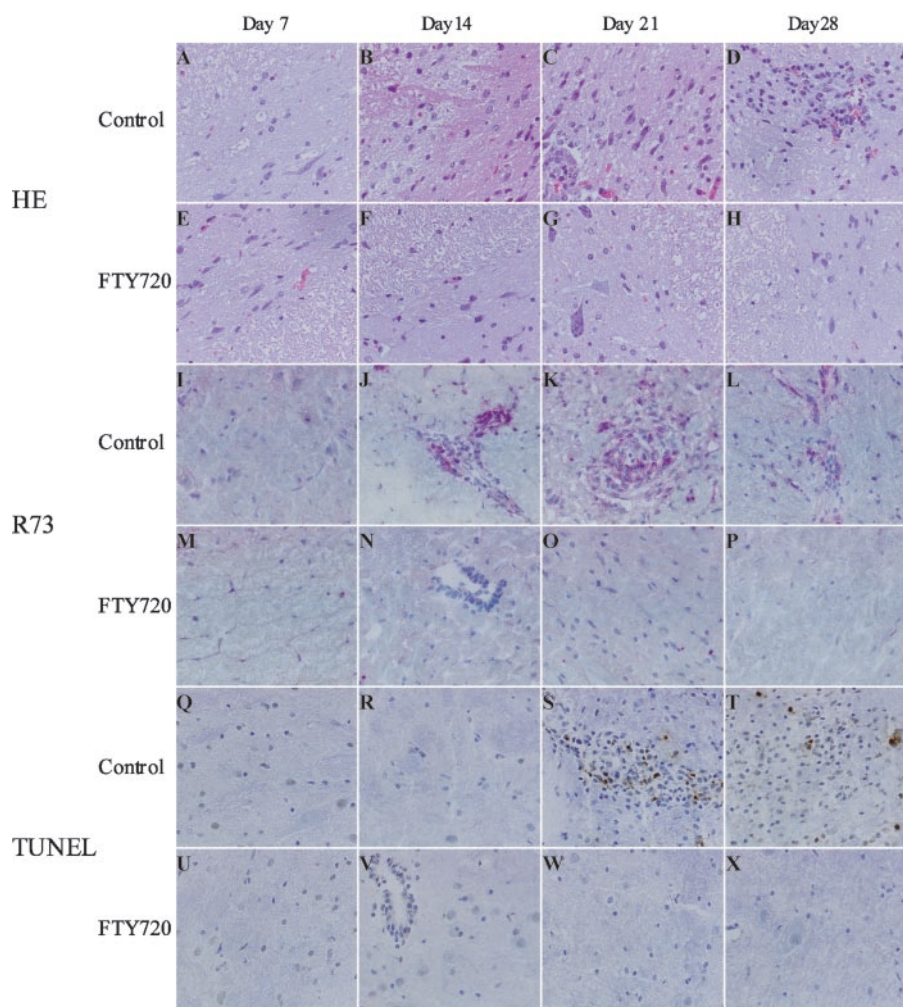


Fig. 2. Histological findings of the spinal cord in the EAE Lewis rat. Histological findings of the MBP/CFA-immunized rats treated with FTY720 or control saline. In HE staining in the spinal cords of rats, inflammatory lesions were readily detectable in control rats, whereas the spinal cords from rats administered FTY720 exhibited a complete absence of inflammatory-cell infiltrates (A–H). Influx of inflammatory T cells in the spinal cords of rats was shown in the control rats, whereas administration of FTY720 dramatically decreased infiltration of T lymphocytes (I–P). Detection of apoptotic cells in the spinal cords of rats by the use of the TUNEL method was shown in control rats, whereas treatment of FTY720 decreased TUNEL-positive cells in the spinal cords of rats (Q–X). Original magnification 100 \times . Data are representative of three separate experiments.

an acute, monophasic course. We identified the expression of T-cell receptors in CNS to investigate T lymphocyte infiltration and the effect of FTY720 on those cells. As shown in Fig. 2, J–L, infiltration of T lymphocytes was found in the spinal cords of saline-treated rats. Administration of FTY720 dramatically decreased infiltration of T lymphocytes (Fig. 2, N–P), however. By day 14, this difference was more marked; there were also more T cells in the portal tracts of the control group than in that of the FTY720-treated group.

Effect of FTY720 on the Induction of Apoptosis in the CNS. Apoptosis related to EAE is well known in Lewis rats (Pender et al., 1991). To identify apoptosis in the CNS, we performed TUNEL staining of the spinal cords of Lewis rats with EAE. We observed many apoptotic cells in the spinal cords of control saline-treated rats on days 21 and 28 with the TUNEL method but none in FTY720-treated rats (Fig. 2, S and T versus W and X).

Activation of Infiltrating Cells and Suppression of Cytokine Production. The development of clinical EAE has been associated with the production of various inflammatory cytokines associated with the Th1 phenotype, including IL-2, IL-6, and IFN- γ (Ando et al., 1989; Samoiloova et al., 1998). The mRNA levels of these inflammatory products have been identified and quantified in the spinal cords and spleen both of FTY720-administered and control saline-adminis-

trated rats (Fig. 3, A and B), whereas very little reduction was seen in spleens of the FTY720- and control saline-administrated rats (Fig. 4, A and B).

Adoptive Transfer of Protection against EAE. To understand the mechanism involved in suppressing EAE by administering FTY720, we tested whether this lack of response could be adoptively transferred by spleen cells from the FTY720-treated donors. As shown in Fig. 5, the results demonstrated that Con A-activated splenocytes from rats administered saline successfully transferred EAE to naive recipient rats. In contrast, Con A-stimulated spleen cells from FTY720-treated donors transferred into naive recipient rats against EAE manifestation by reducing both disease incidence and clinical score (Fig. 5).

Discussion

Despite numerous advances in the past decade, the cause and pathogenesis of the inflammatory CNS demyelinating disorder MS remain unknown. EAE, an inflammatory CNS demyelinating disorder that serves as the prime animal model for MS, can be induced in a number of species by immunization with myelin components or injection of autoimmune T lymphocytes and has been used to study immune

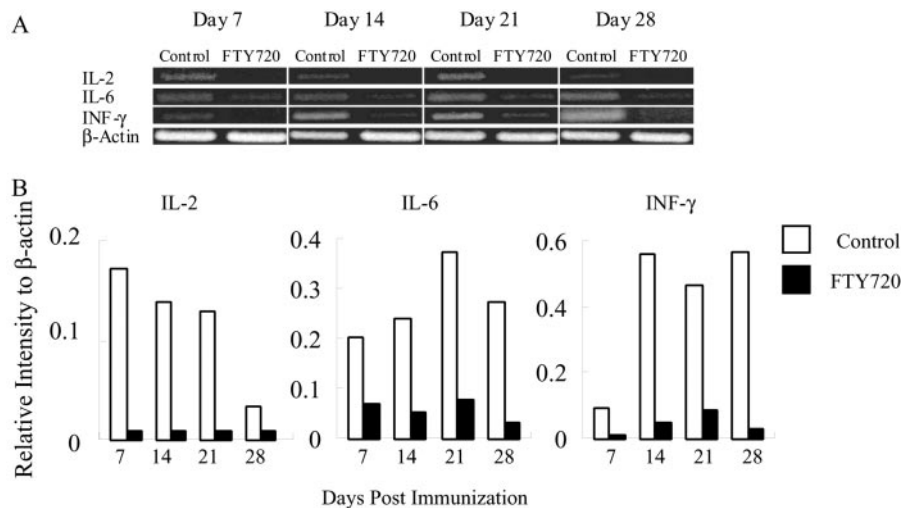


Fig. 3. RT-PCR for IL-2, IL-6, and INF- γ mRNAs in the spinal cords of the EAE Lewis rat. A, representative data show the intensity of RT-PCR products obtained from spinal cord samples in each group. Compared with control rats, mRNA expression for IL-2, IL-6, and INF- γ decreased in the FTY720-treated rats. B, the intensity of each band was calculated using Kodak Digital Science 1D image analysis software. The relative quantities of the genes are presented as the ratio of intensities of IL-2, IL-6, and INF- γ bands against those of the housekeeping gene β -actin. Data are representative of three independent experiments and indicate the mean ratio of triplicate results in each experiment.

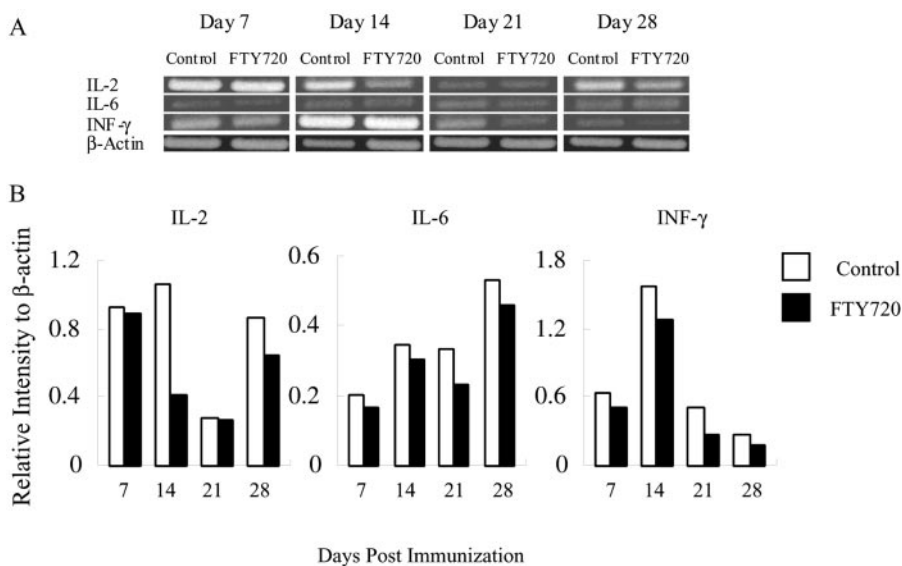


Fig. 4. RT-PCR for IL-2, IL-6, and INF- γ mRNAs in the spleen of the EAE Lewis rat. A, representative data show the intensity of RT-PCR products obtained from spleen samples in each group. Compared with control rats, no decrease of mRNA expression for IL-2, IL-6, and INF- γ was shown in the FTY720-treated rats. B, the relative quantities of the genes in spleen were plotted against those of control as described in Fig. 3

search has reached a stage on which a considerable range of new therapeutic strategies has emerged, and some of them may be very close to clinical application. A common thread in these strategies is that they could become useful for treating many different cell-mediated autoimmune diseases.

CsA and FK506 are well known immunosuppressants and have contributed to preventing EAE. For instance, actively induced EAE can be inhibited by administering CsA orally at 1 mg/kg/day (Bolton et al., 1982b; Deguchi et al., 1991); adoptive transfer-induced EAE can also be inhibited (Bolton et al., 1982a). Inamura et al. (1988) demonstrated that FK506, like CsA, also inhibited actively induced EAE. Bolton (1992) showed that inhibition of adoptive transfer-induced EAE using the drug. These immunosuppressants are known to exert their immunosuppressive activity by inhibiting the production of Th1-associated cytokines in Ag-stimulated T cells (Borel, 1990). Although CsA binds to cyclophilin and FK506 to FK506-binding protein, both cyclophilin/CsA and FK506-binding protein/FK506 complexes inhibit the phosphatase activity of calcineurin that activates the nuclear factor of activated T cell involved in promoting IL-2 gene transcription (Liu et al., 1991). Because CsA and FK506

similar side effects, such as renal and liver toxicities (Platz et al., 1994). Thus, CsA- or FK506-based multiple drug therapy with steroids or other immunosuppressants has been widely used to reduce the side effects of individual immunosuppressants in clinical situations (McWhinnie and Morris, 1991). These immunosuppressants also cause metabolic derangements and organ toxicities at therapeutic doses. Therefore, drug therapies to disable or eliminate only T cells that are involved in a particular disease would potentially be very useful. The latest progress of immunosuppressive therapy has brought enormous advantages not only in the field of organ transplantation but also in the treatment of allergic and autoimmune diseases.

There is thus great interest in the recently characterized and potent immunosuppressant FTY720. FTY720 is a synthetic drug produced by modifying ISP-1 purified from culture filtrates of *I. sinclairii*, an ascomycete. FTY720 has demonstrated a unique mechanism to trigger rat spleen cells and several cell lines undergoing apoptosis in vitro systems and in animal organ transplantation models and has an effective immunosuppressive activity for preventing allograft rejection without toxic side effects (Suzuki et al., 1996a,b).

Explore Litigation Insights

Docket Alarm provides insights to develop a more informed litigation strategy and the peace of mind of knowing you're on top of things.

Real-Time Litigation Alerts



Keep your litigation team up-to-date with **real-time alerts** and advanced team management tools built for the enterprise, all while greatly reducing PACER spend.

Our comprehensive service means we can handle Federal, State, and Administrative courts across the country.

Advanced Docket Research



With over 230 million records, Docket Alarm's cloud-native docket research platform finds what other services can't. Coverage includes Federal, State, plus PTAB, TTAB, ITC and NLRB decisions, all in one place.

Identify arguments that have been successful in the past with full text, pinpoint searching. Link to case law cited within any court document via Fastcase.

Analytics At Your Fingertips



Learn what happened the last time a particular judge, opposing counsel or company faced cases similar to yours.

Advanced out-of-the-box PTAB and TTAB analytics are always at your fingertips.

API

Docket Alarm offers a powerful API (application programming interface) to developers that want to integrate case filings into their apps.

LAW FIRMS

Build custom dashboards for your attorneys and clients with live data direct from the court.

Automate many repetitive legal tasks like conflict checks, document management, and marketing.

FINANCIAL INSTITUTIONS

Litigation and bankruptcy checks for companies and debtors.

E-DISCOVERY AND LEGAL VENDORS

Sync your system to PACER to automate legal marketing.