

(12) United States Patent
Gregg et al.

(10) Patent No.: US 6,516,416 B2
(45) Date of Patent: *Feb. 4, 2003

(54) SUBSCRIPTION ACCESS SYSTEM FOR USE WITH AN UNTRUSTED NETWORK

(75) Inventors: **Richard L. Gregg**, Omaha, NE (US);
Sandeep Giri, Omaha, NE (US);
Timothy C. Goeke, Elkhorn, NE (US)

(73) Assignee: **Prism Resources**, Omaha, NE (US)

(*) Notice: This patent issued on a continued prosecution application filed under 37 CFR 1.53(d), and is subject to the twenty year patent term provisions of 35 U.S.C. 154(a)(2).

Subject to any disclaimer, the term of this patent is extended or adjusted under 35 U.S.C. 154(b) by 0 days.

(21) Appl. No.: 08/872,710

(22) Filed: Jun. 11, 1997

(65) Prior Publication Data

US 2002/0002688 A1 Jan. 3, 2002

(51) Int. Cl.⁷ H04L 9/00

(52) U.S. Cl. 713/201; 705/51

(58) Field of Search 380/25, 21, 49, 380/30; 713/202, 201, 200; 705/54, 51

(56) References Cited

U.S. PATENT DOCUMENTS

5,629,980 A * 5/1997 Stefik et al. 705/54

5,677,953 A * 10/1997 Dolphin 380/4
 5,708,780 A * 1/1998 Levergood et al. 709/229
 5,765,152 A * 6/1998 Erickson 707/9
 6,006,332 A * 12/1999 Rabne et al. 713/201

* cited by examiner

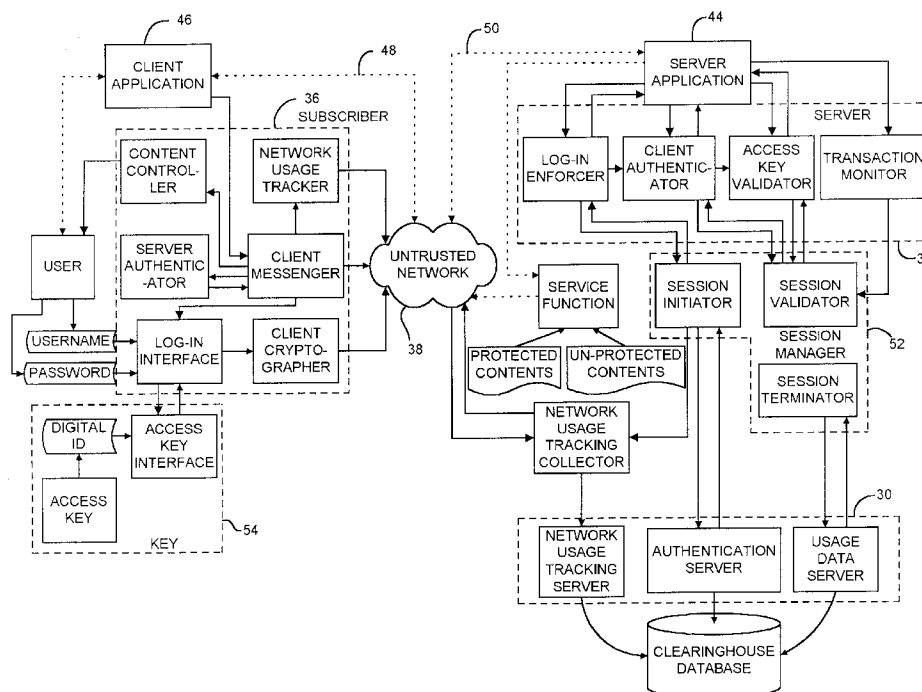
Primary Examiner—Matthew Smithers

(74) Attorney, Agent, or Firm—Greer, Burns & Crain, Ltd.

(57) ABSTRACT

A system and method is disclosed for controlling access to computer resources using an untrusted network. The system preferably uses a hardware key connected to each subscriber client computer and adds software to the subscriber client computer and to the existing server computer. A clearinghouse is provided to store client and server identification data, including demographic data, including URL data, usage data and billing information. The clearinghouse authenticates the subscriber and server computers before an operating session occurs. For every new client session, a login mechanism requires the client computer to supply appropriate identification data, including a digital identification generated by the hardware key. The login parameters are verified by the clearinghouse and a session is then started. The system is adapted to protect preselected content from being printed or copied by a client using a web browser. The system architecture permits a geographical distributed system of multiple subscriber client computers, multiple server computers and multiple clearinghouses which can interact with each other.

31 Claims, 24 Drawing Sheets



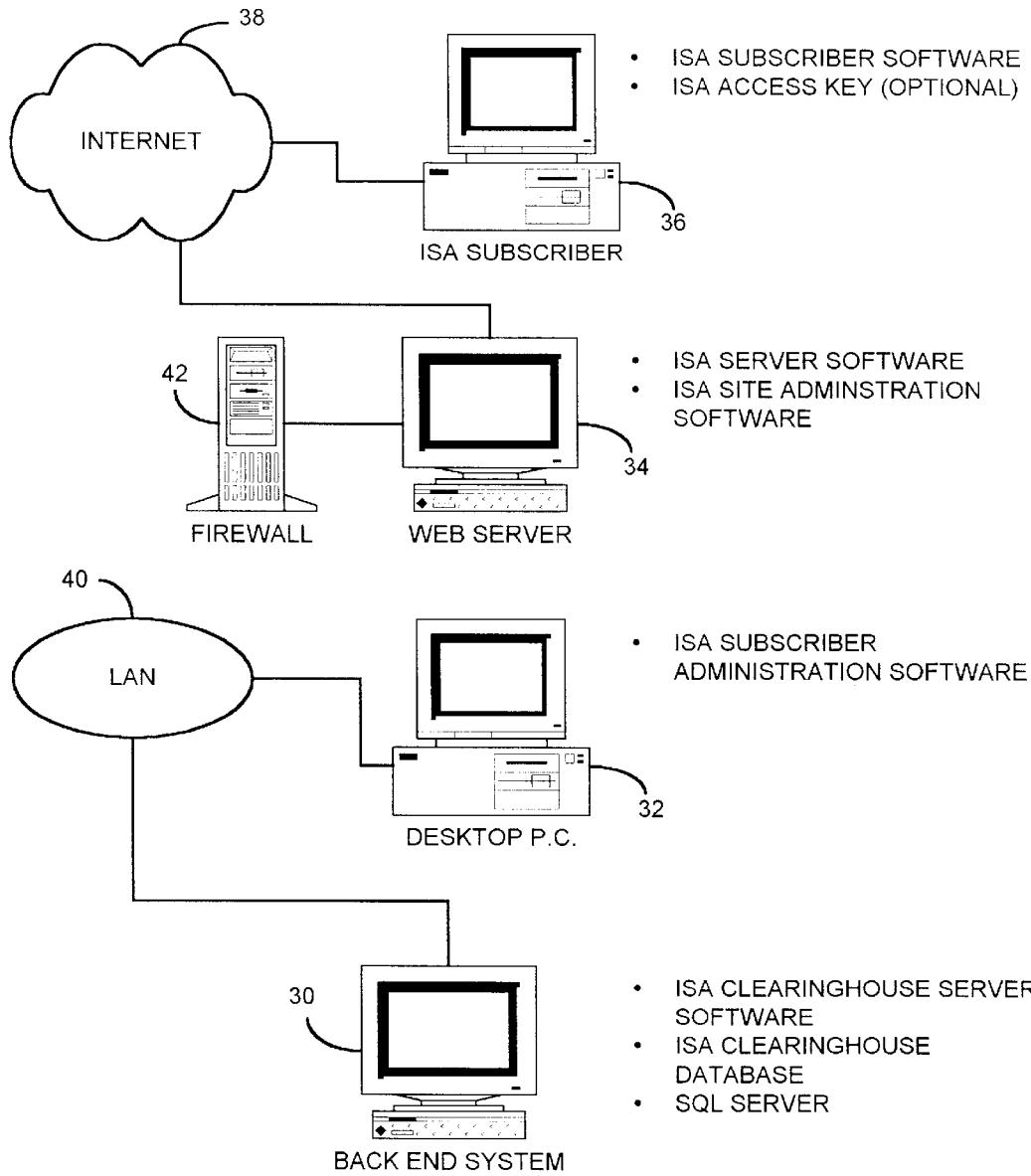


FIG. 1

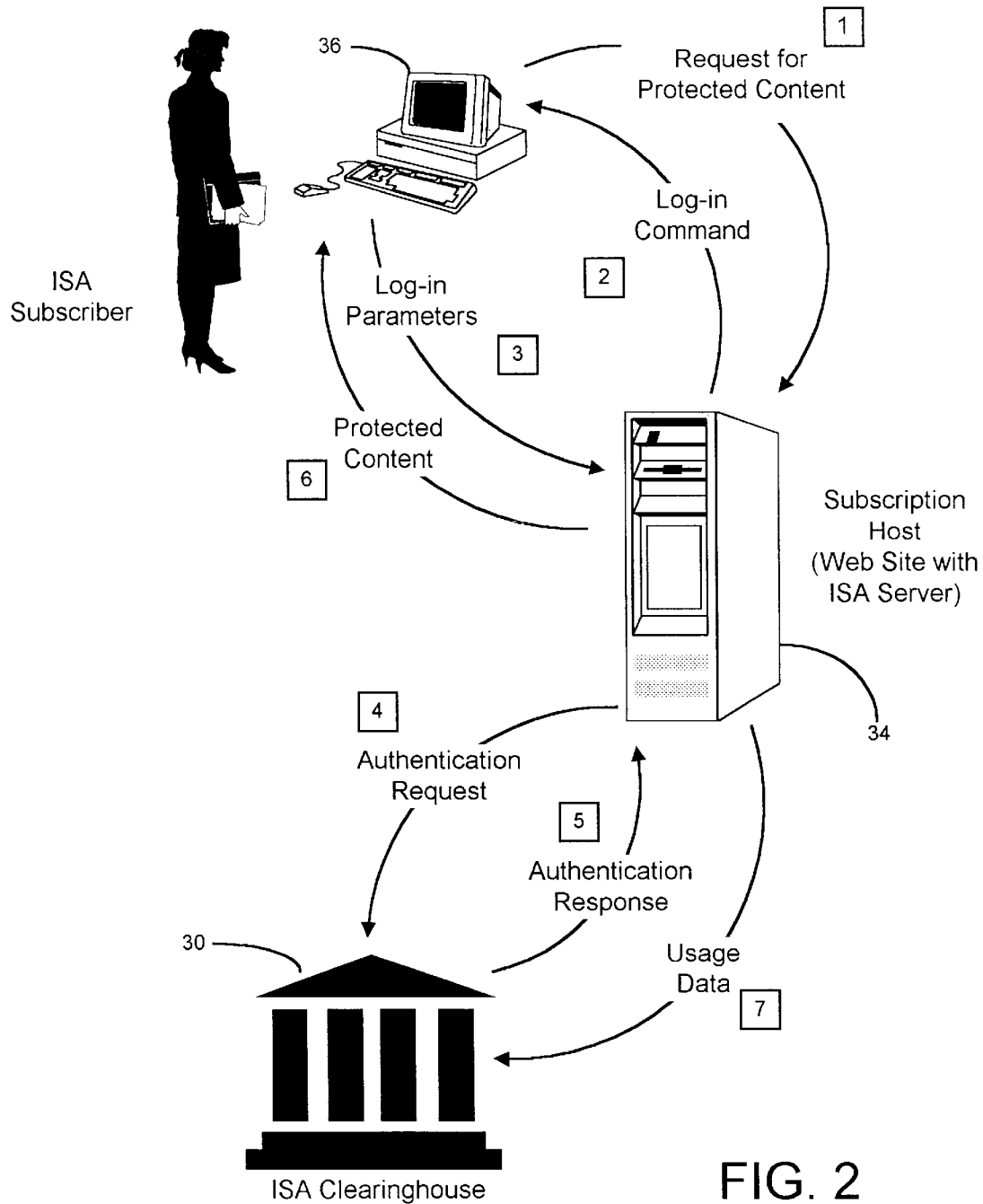


FIG. 2

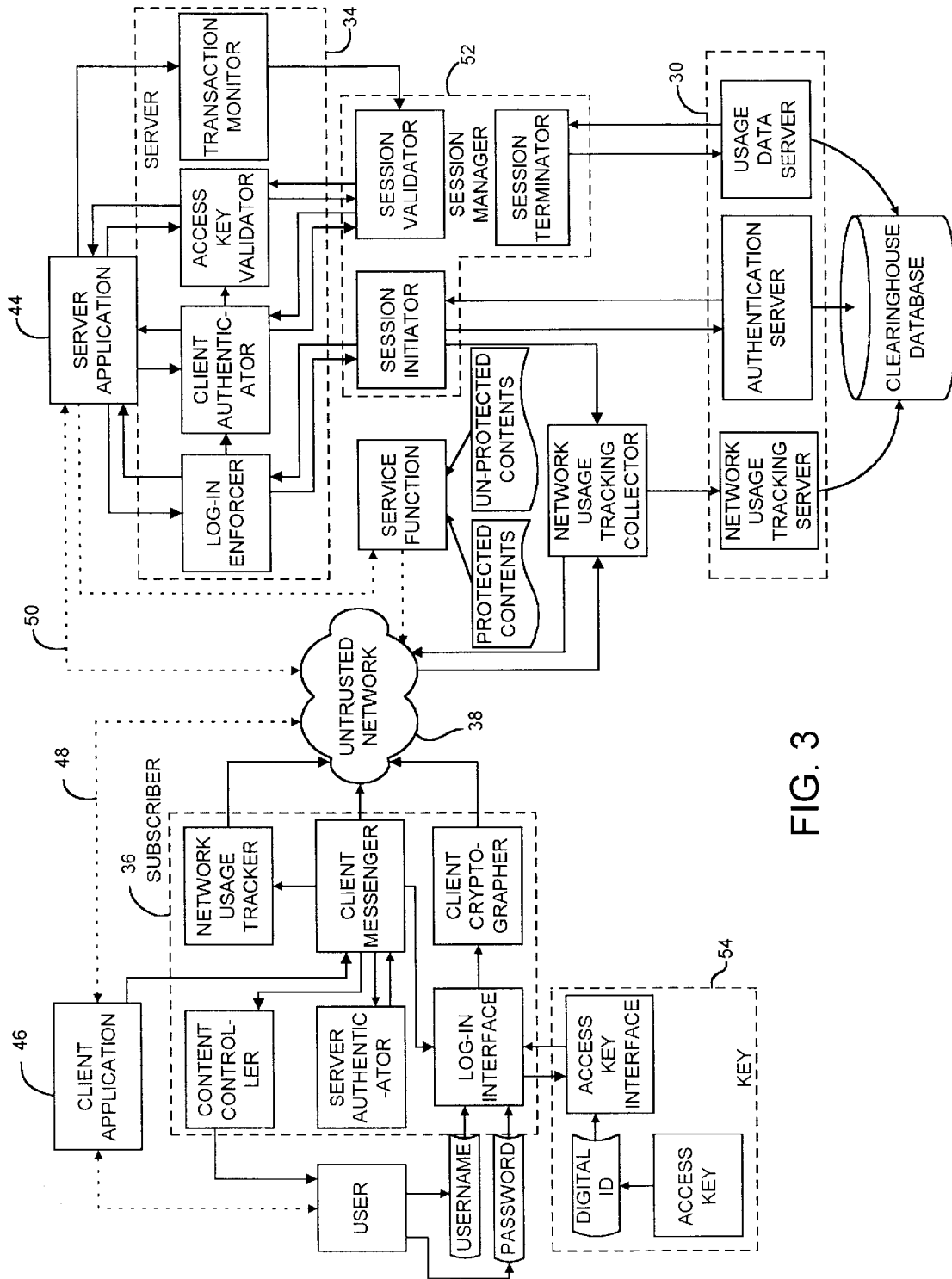


FIG. 3

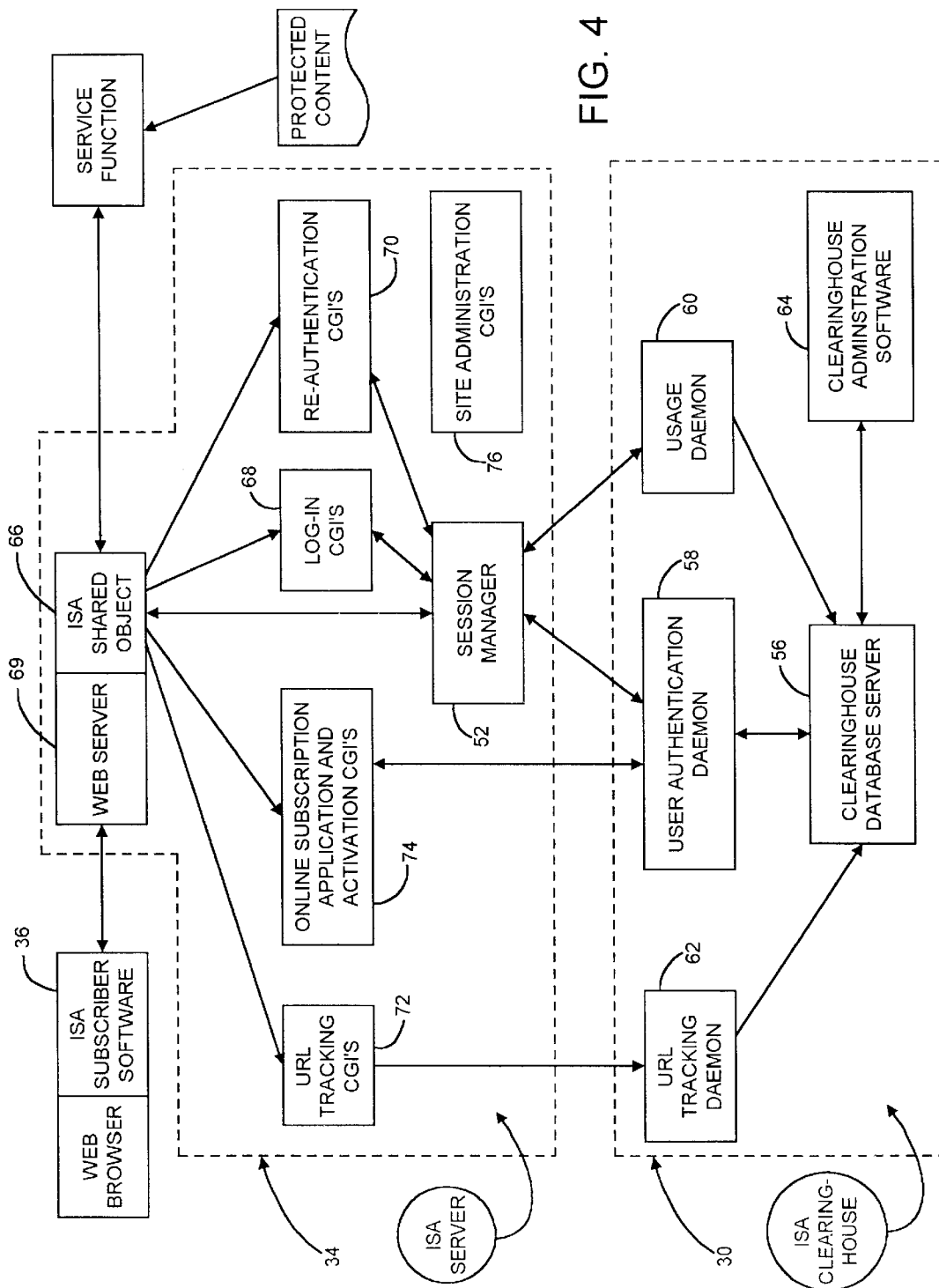


FIG. 4

Explore Litigation Insights

Docket Alarm provides insights to develop a more informed litigation strategy and the peace of mind of knowing you're on top of things.

Real-Time Litigation Alerts



Keep your litigation team up-to-date with **real-time alerts** and advanced team management tools built for the enterprise, all while greatly reducing PACER spend.

Our comprehensive service means we can handle Federal, State, and Administrative courts across the country.

Advanced Docket Research



With over 230 million records, Docket Alarm's cloud-native docket research platform finds what other services can't. Coverage includes Federal, State, plus PTAB, TTAB, ITC and NLRB decisions, all in one place.

Identify arguments that have been successful in the past with full text, pinpoint searching. Link to case law cited within any court document via Fastcase.

Analytics At Your Fingertips



Learn what happened the last time a particular judge, opposing counsel or company faced cases similar to yours.

Advanced out-of-the-box PTAB and TTAB analytics are always at your fingertips.

API

Docket Alarm offers a powerful API (application programming interface) to developers that want to integrate case filings into their apps.

LAW FIRMS

Build custom dashboards for your attorneys and clients with live data direct from the court.

Automate many repetitive legal tasks like conflict checks, document management, and marketing.

FINANCIAL INSTITUTIONS

Litigation and bankruptcy checks for companies and debtors.

E-DISCOVERY AND LEGAL VENDORS

Sync your system to PACER to automate legal marketing.