

**IN THE UNITED STATES DISTRICT COURT
FOR THE EASTERN DISTRICT OF TEXAS
MARSHALL DIVISION**

| | | |
|--------------------------|---|------------------------------|
| UNILOC USA, INC. and | § | |
| UNILOC LUXEMBOURG, S.A., | § | Civil Action No. 2:16-cv-872 |
| | § | |
| Plaintiffs, | § | |
| | § | |
| v. | § | PATENT CASE |
| | § | |
| SQUARE ENIX, INC., | § | |
| | § | |
| Defendant. | § | JURY TRIAL DEMANDED |

ORIGINAL COMPLAINT FOR PATENT INFRINGEMENT

1. Plaintiffs, Uniloc USA, Inc. and Uniloc Luxembourg, S.A. (together “Uniloc”), as and for their complaint against defendant, Square Enix, Inc. (“Defendant”), allege as follows:

THE PARTIES

2. Uniloc USA, Inc. (“Uniloc USA”) is a Texas corporation having a principal place of business at Legacy Town Center I, Suite 380, 7160 Dallas Parkway, Plano Texas 75024. Uniloc also maintains a place of business at 102 N. College, Suite 603, Tyler, Texas 75702.

3. Uniloc Luxembourg S.A. (“Uniloc Luxembourg”) is a Luxembourg public limited liability company having a principal place of business at 15, Rue Edward Steichen, 4th Floor, L-2540, Luxembourg (R.C.S. Luxembourg B159161). Uniloc Luxembourg owns a number of patents in the field of application management in a computer network.

4. Upon information and belief, Square Enix, Inc. is a Washington corporation having a place of business at 999 N. Sepulveda Blvd., Third Floor, El Segundo, CA 90245 and offering its products and/or services, including those accused herein of infringement, for purchase or download to customers and/or

potential customers located in Texas and in the judicial Eastern District of Texas. Square Enix, Inc. may be served with process through its registered agent: Corporation Service Company, 300 Deschutes Way SW, Suite 304, Tumwater, Washington 98501.

JURISDICTION AND VENUE

5. Uniloc brings this action for patent infringement under the patent laws of the United States, 35 U.S.C. § 271 et seq. This Court has subject matter jurisdiction pursuant to 28 U.S.C. §§ 1331, 1338(a) and 1367.

6. Venue is proper in this judicial district pursuant to 28 U.S.C. §§ 1391(c) and 1400(b). Upon information and belief, Defendant is deemed to reside in this judicial district, has committed acts of infringement in this judicial district, and/or has purposely transacted business involving the accused products in this judicial district, including sales to one or more customers in Texas.

7. Defendant is subject to this Court's jurisdiction pursuant to due process and/or the Texas Long Arm Statute due at least to its substantial business in this State and judicial district, including: (A) at least part of its past infringing activities, (B) regularly doing or soliciting business in Texas and/or (C) engaging in persistent conduct and/or deriving substantial revenue from goods and services provided to customers in Texas.

COUNT I

(INFRINGEMENT OF U.S. PATENT NO. 6,510,466)

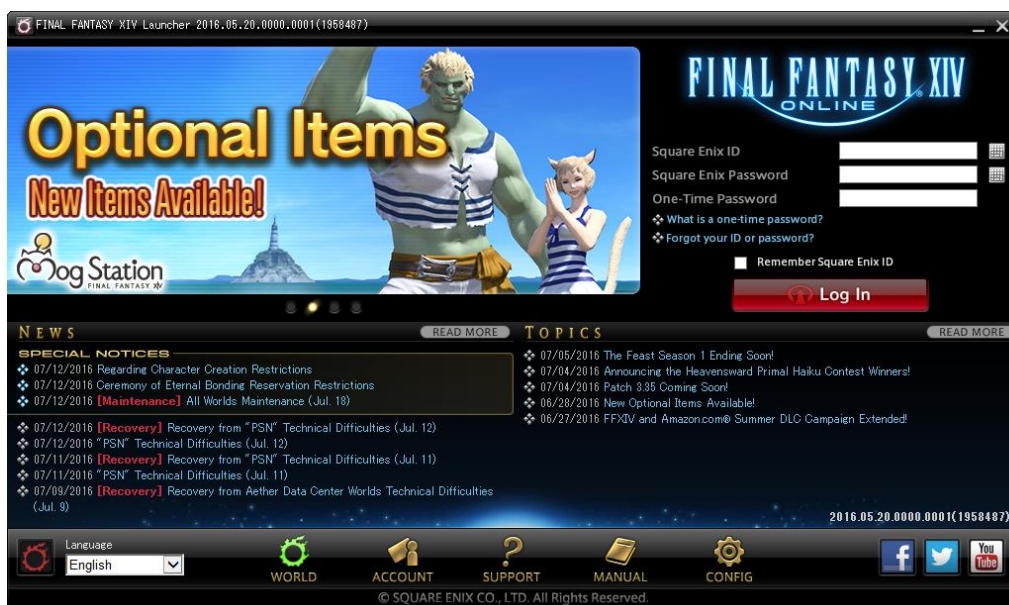
8. Uniloc incorporates by reference the preceding paragraphs.

9. Uniloc Luxembourg is the owner, by assignment, of U.S. Patent No. 6,510,466 ("the '466 Patent"), entitled METHODS, SYSTEMS AND COMPUTER PROGRAM PRODUCTS FOR CENTRALIZED MANAGEMENT OF APPLICATION PROGRAMS ON ANETWORK that issued on January 21, 2003. A true and correct copy of the '466 Patent is attached as Exhibit A hereto.

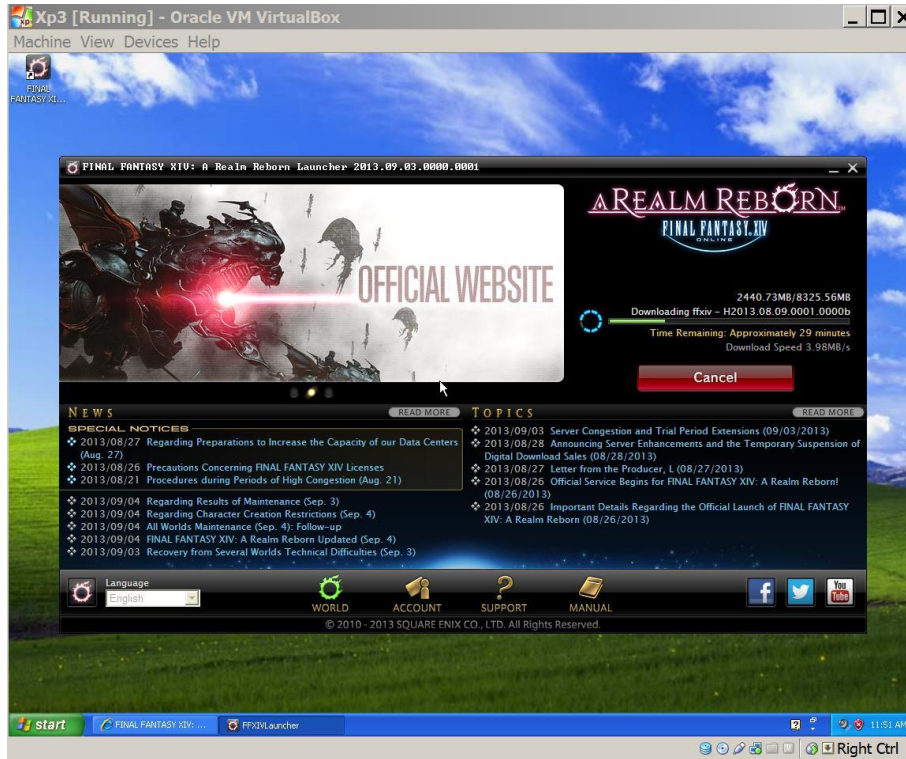
10. Uniloc USA is the exclusive licensee of the '466 Patent with ownership of all substantial rights therein, including the right to grant sublicenses, to exclude others, and to enforce, sue and recover past damages for the infringement thereof.

11. The '466 Patent has been referenced by over four hundred other patent applications/patents including patents applications/patents by IBM, HP, Network Associates, Microsoft, Fujitsu, Alcatel, SAP, AT&T, Citrix, Sharp, Computer Associates, Oracle, Google, and Intel.

12. Upon information and belief, the following describes, at least in part, how certain aspects of a representative sample of Defendant's software licensing and delivery system work:

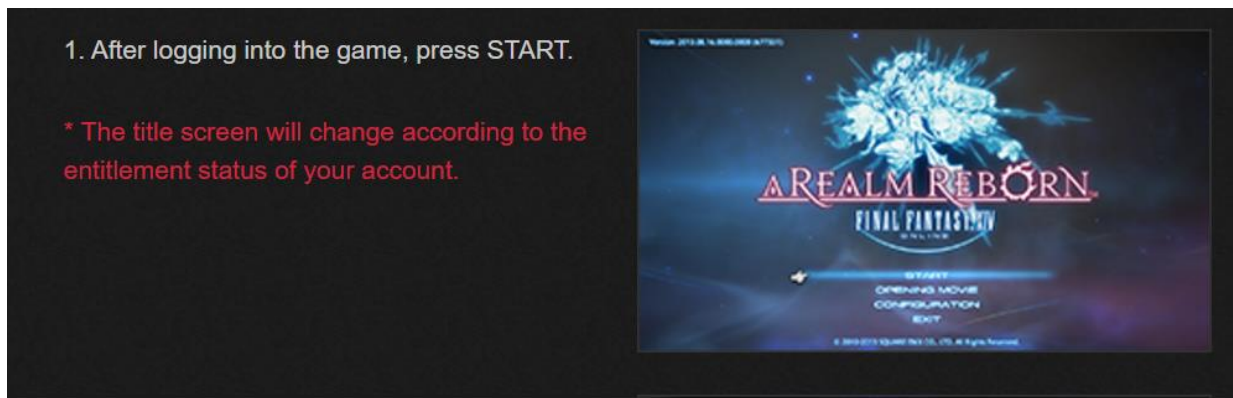


13. Upon information and belief, the following describes, at least in part, how certain aspects of a representative sample of Defendant's software licensing and delivery system work:



Source: <http://forum.square-enix.com/ffxiv/threads/81275-30413-10009-10019-FFXIV-launcher-download-error>

14. Upon information and belief, the following describes, at least in part, how certain aspects of a representative sample of Defendant's software licensing and delivery system work:



Source: <http://na.finalfantasyxiv.com/lodestone/playguide/win/>

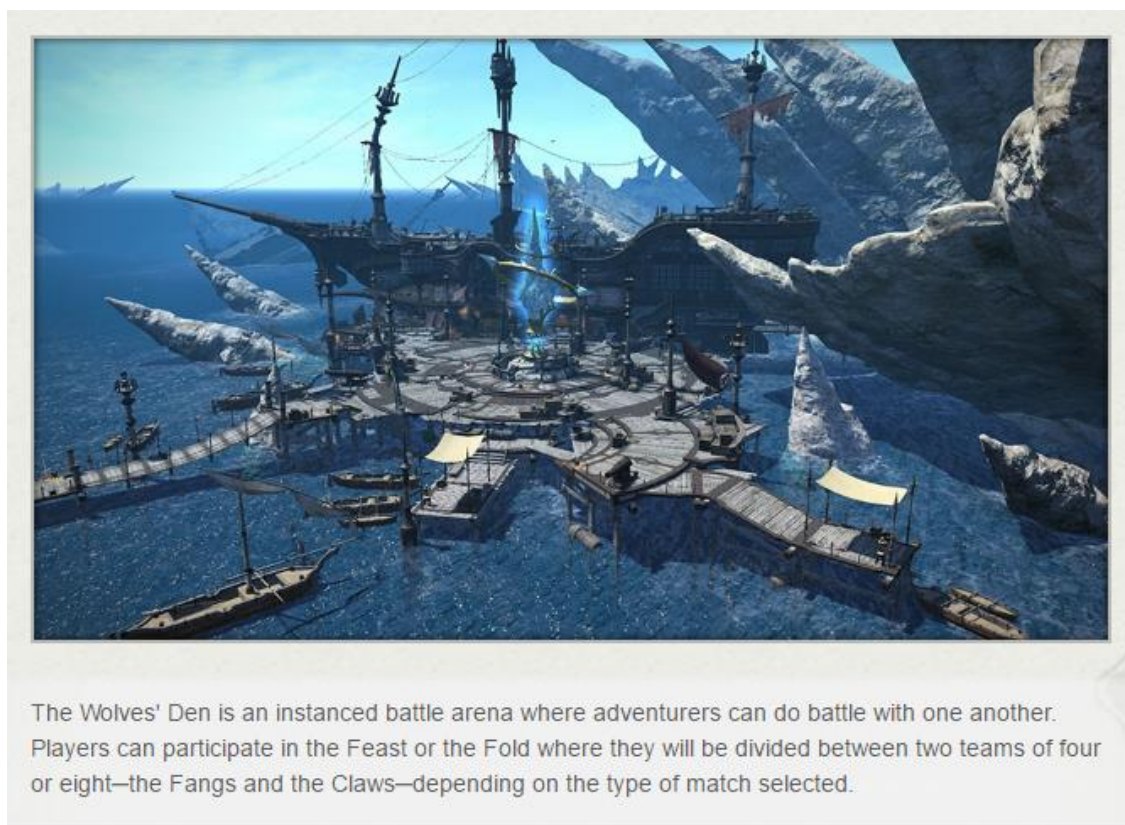
15. Upon information and belief, the following describes, at least in part, how certain aspects

of a representative sample of Defendant's software licensing and delivery system work:



Product Testing

16. Upon information and belief, the following describes, at least in part, how certain aspects of a representative sample of Defendant's software licensing and delivery system work:



Explore Litigation Insights

Docket Alarm provides insights to develop a more informed litigation strategy and the peace of mind of knowing you're on top of things.

Real-Time Litigation Alerts



Keep your litigation team up-to-date with **real-time alerts** and advanced team management tools built for the enterprise, all while greatly reducing PACER spend.

Our comprehensive service means we can handle Federal, State, and Administrative courts across the country.

Advanced Docket Research



With over 230 million records, Docket Alarm's cloud-native docket research platform finds what other services can't. Coverage includes Federal, State, plus PTAB, TTAB, ITC and NLRB decisions, all in one place.

Identify arguments that have been successful in the past with full text, pinpoint searching. Link to case law cited within any court document via Fastcase.

Analytics At Your Fingertips



Learn what happened the last time a particular judge, opposing counsel or company faced cases similar to yours.

Advanced out-of-the-box PTAB and TTAB analytics are always at your fingertips.

API

Docket Alarm offers a powerful API (application programming interface) to developers that want to integrate case filings into their apps.

LAW FIRMS

Build custom dashboards for your attorneys and clients with live data direct from the court.

Automate many repetitive legal tasks like conflict checks, document management, and marketing.

FINANCIAL INSTITUTIONS

Litigation and bankruptcy checks for companies and debtors.

E-DISCOVERY AND LEGAL VENDORS

Sync your system to PACER to automate legal marketing.