

[54] SYSTEM FOR CONFIGURING AND REMOTELY ADMINISTERING A UNIX COMPUTER OVER A NETWORK

[75] Inventor: James B. Sanders, Menlo Park, Calif.

[73] Assignee: Sun Microsystems, Inc., Mountain View, Calif.

[21] Appl. No.: 639,129

[22] Filed: Apr. 26, 1996

[51] Int. Cl.<sup>6</sup> ..... G06F 17/00

[52] U.S. Cl. .... 395/200.53

[58] Field of Search ..... 395/200.53, 200.5, 395/200.51, 200.52, 712, 762, 651, 652, 653; 364/131, 133; 340/825.15

[56] References Cited

U.S. PATENT DOCUMENTS

5,426,421 6/1995 Gray ..... 340/825.15

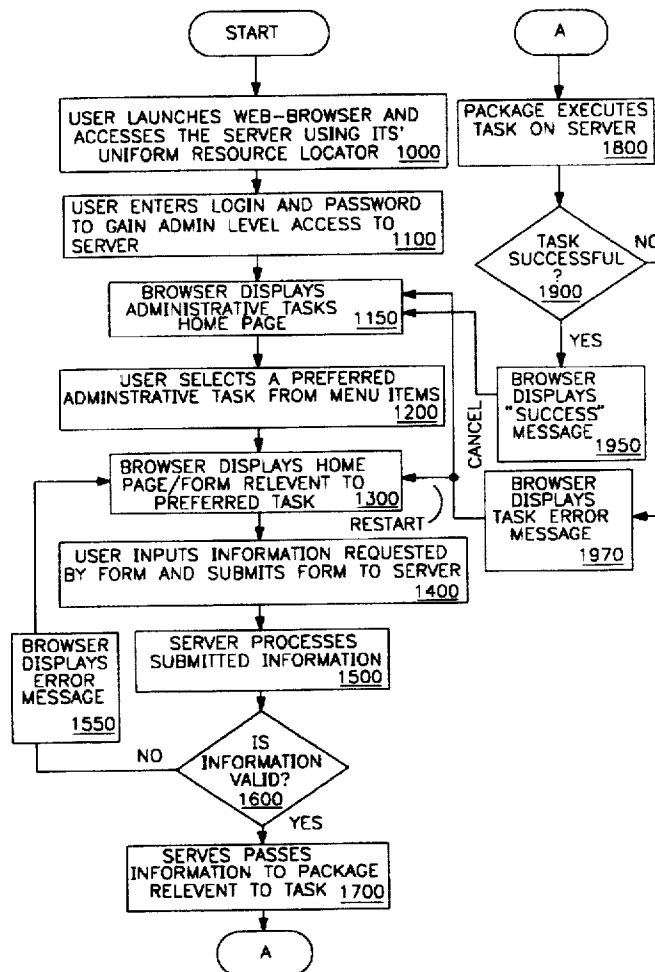
Primary Examiner—Ellis B. Ramirez

Attorney, Agent, or Firm—Blakely Sokoloff Taylor & Zafman

[57] ABSTRACT

A forms based browser interface system for configuring and administering a network server from a remote location. Using forms, such as hyper-text markup language forms, the system provides a graphical user interface that allows a novice user, unaware of the platform, architecture or even operating system of the network server, to transact administrative tasks on the network server. An interfacing computer, at which the novice user performs administrative tasks upon the network server, is connected to the network server via network connections. The interfacing computer is equipped with a browser program that can display and interact with the forms created by the network server. The forms allow the user to select among various administrative tasks to be performed on the server. The forms also allow the user to input parameters for administration of the server such as new account names when adding new accounts for the server. Once the form input is submitted over the network connections to the network server, scripts within the server pass this information as parameters to appropriate software that complete the execution of the task and may signal to the user at the interfacing computer, through messages on the forms, success or failure thereof.

16 Claims, 8 Drawing Sheets



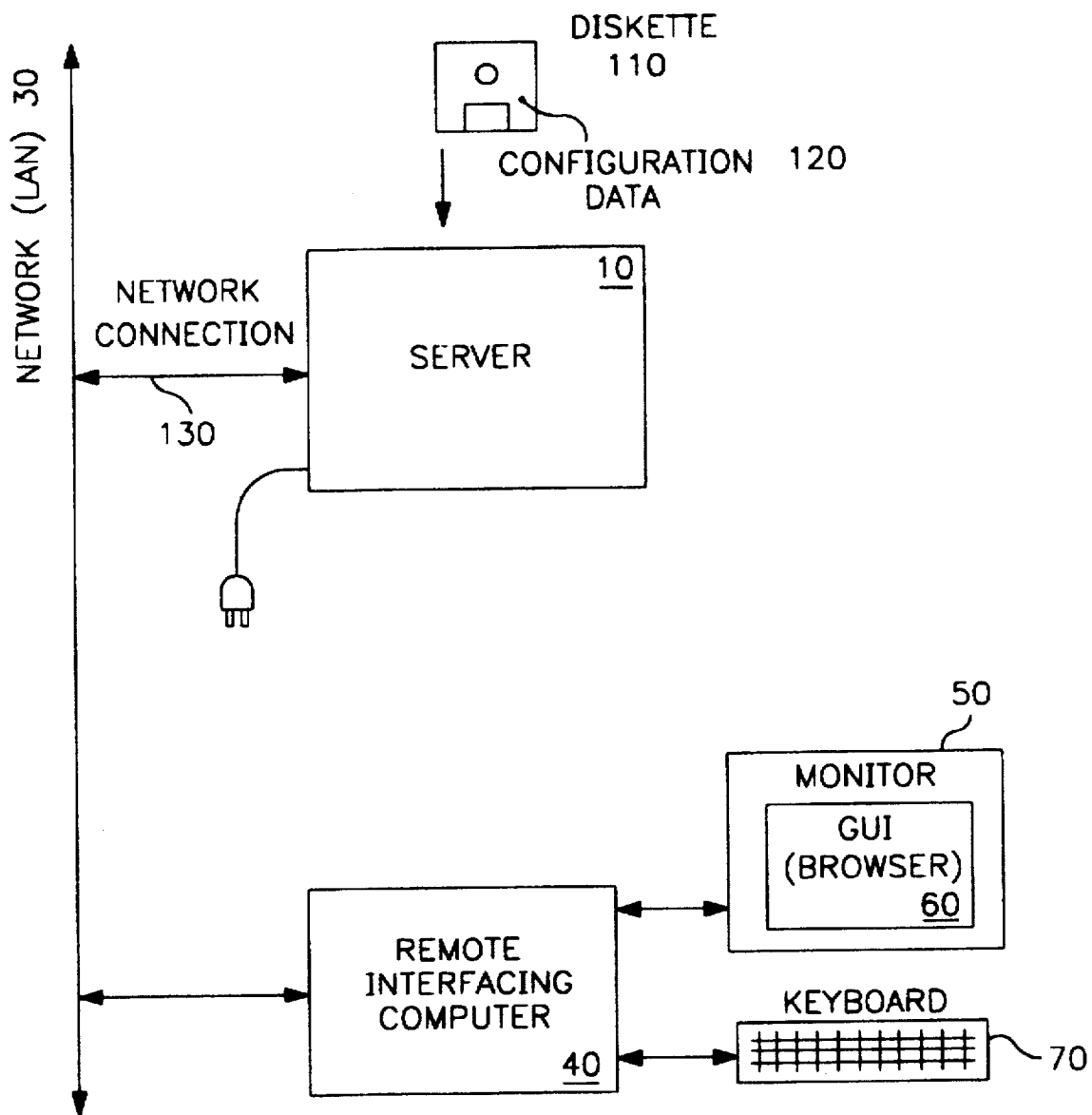


FIG. 1

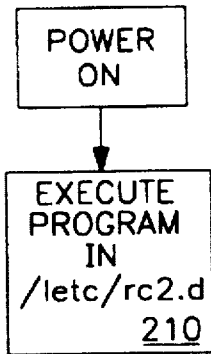


FIG. 2A

/etc/rc2.d program does this:

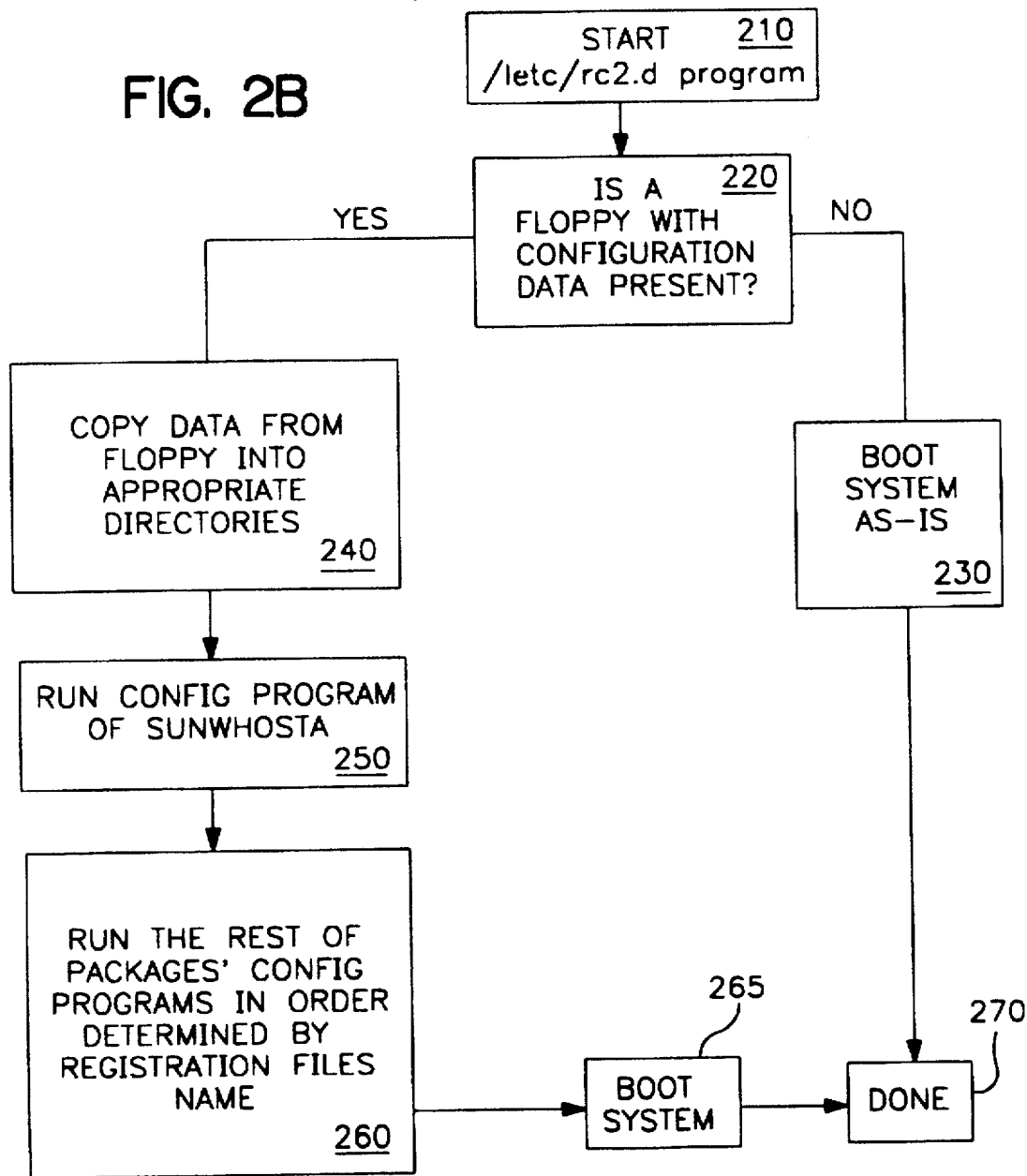


FIG. 2B

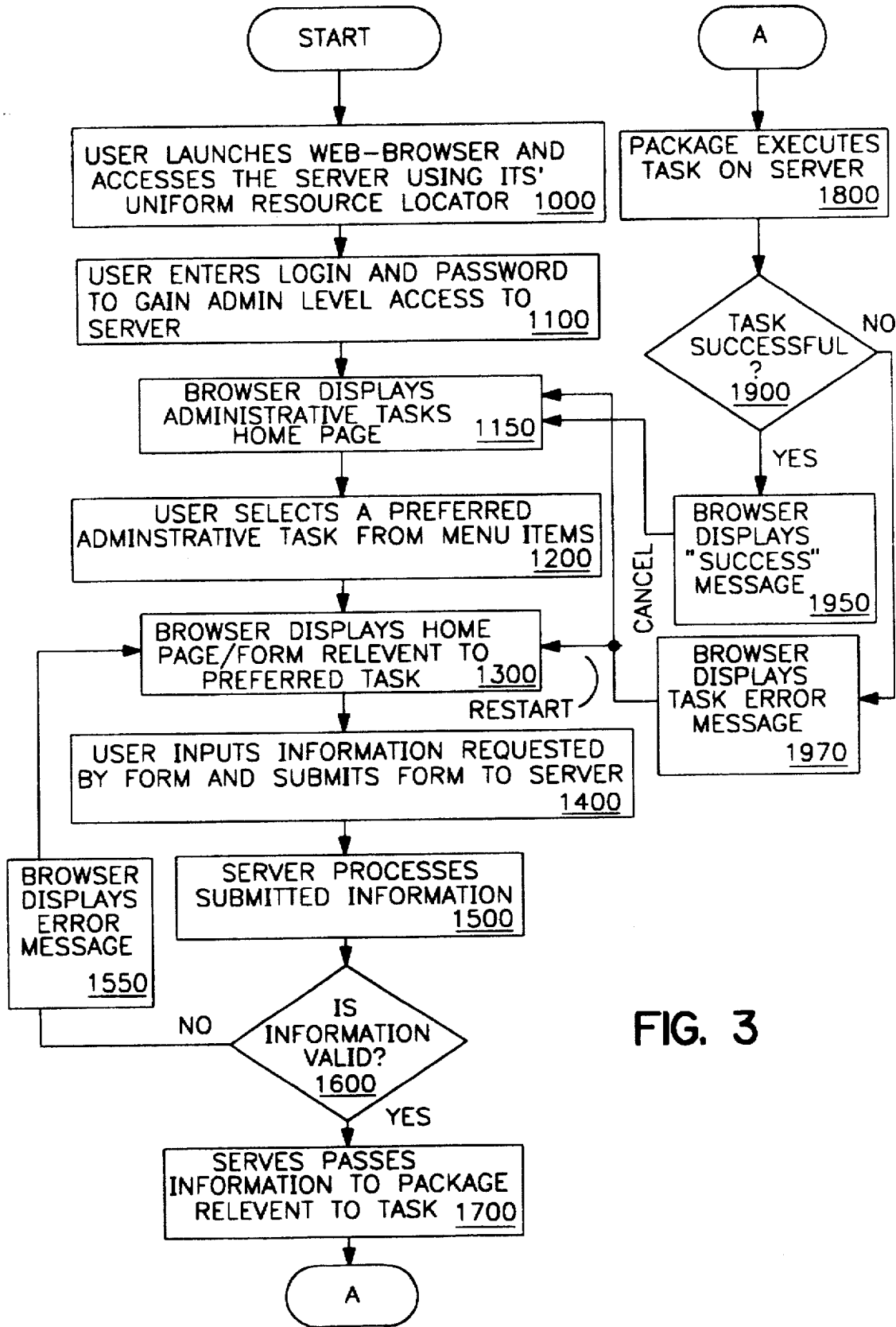
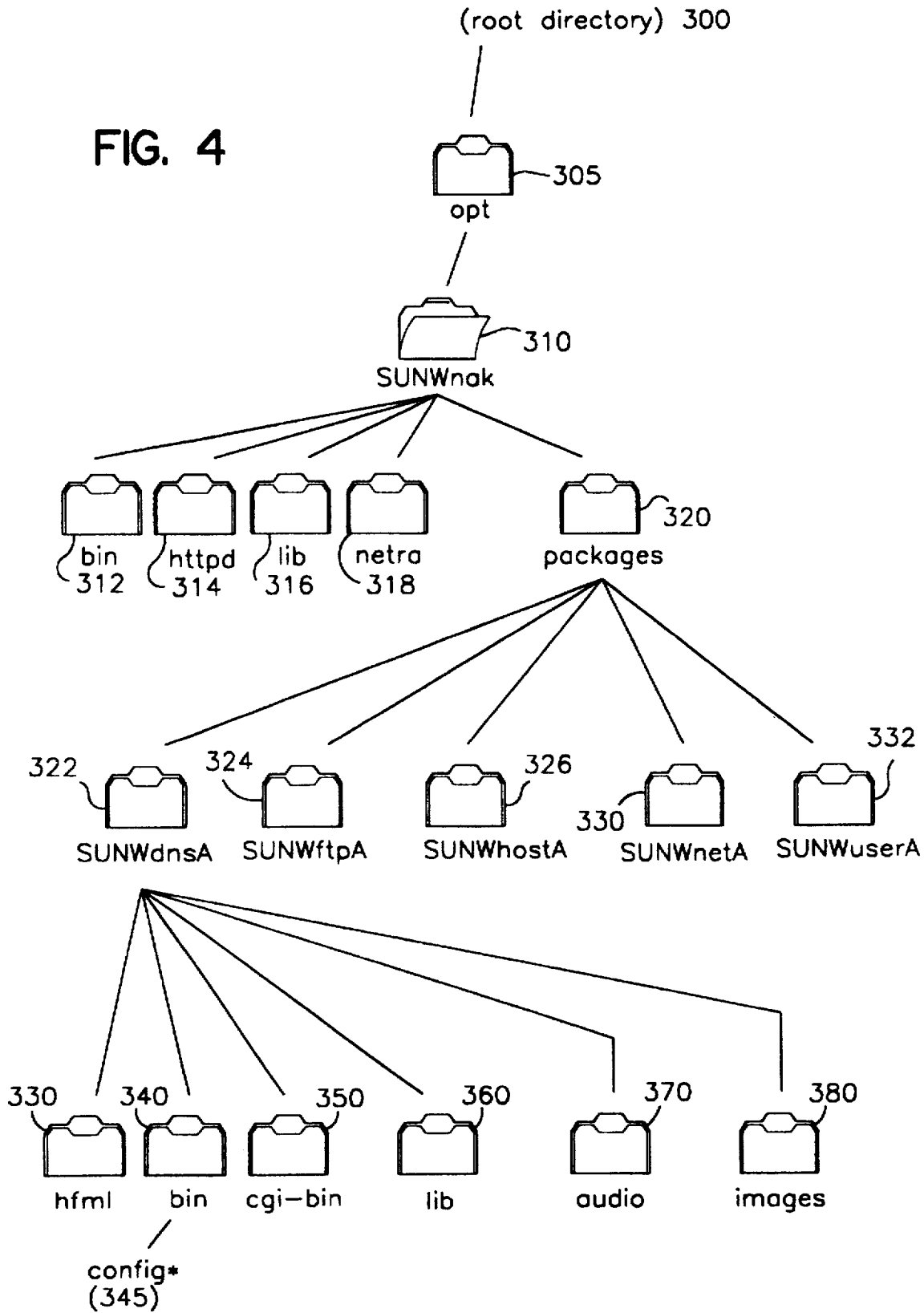


FIG. 3

FIG. 4



# Explore Litigation Insights

Docket Alarm provides insights to develop a more informed litigation strategy and the peace of mind of knowing you're on top of things.

## Real-Time Litigation Alerts



Keep your litigation team up-to-date with **real-time alerts** and advanced team management tools built for the enterprise, all while greatly reducing PACER spend.

Our comprehensive service means we can handle Federal, State, and Administrative courts across the country.

## Advanced Docket Research



With over 230 million records, Docket Alarm's cloud-native docket research platform finds what other services can't. Coverage includes Federal, State, plus PTAB, TTAB, ITC and NLRB decisions, all in one place.

Identify arguments that have been successful in the past with full text, pinpoint searching. Link to case law cited within any court document via Fastcase.

## Analytics At Your Fingertips



Learn what happened the last time a particular judge, opposing counsel or company faced cases similar to yours.

Advanced out-of-the-box PTAB and TTAB analytics are always at your fingertips.

## API

Docket Alarm offers a powerful API (application programming interface) to developers that want to integrate case filings into their apps.

## LAW FIRMS

Build custom dashboards for your attorneys and clients with live data direct from the court.

Automate many repetitive legal tasks like conflict checks, document management, and marketing.

## FINANCIAL INSTITUTIONS

Litigation and bankruptcy checks for companies and debtors.

## E-DISCOVERY AND LEGAL VENDORS

Sync your system to PACER to automate legal marketing.