

MODERN
DICTIONARY
of
ELECTRONICS

SIXTH EDITION

ORIGINAL
UNRECORDED
ELECTRONIC



Rudolf F. Graf is an author whose name is familiar to engineers, technicians, do-it-yourselfers, and hobbyists. His many books and articles on mechanics, electricity, electronics and automobiles have a well-deserved reputation for making complex technology easily understandable and enjoyable. Mr. Graf is a graduate electronics engineer and received his MBA at New York University. He is a Senior Member of the IEEE, a licensed amateur radio operator, and holder of a first-class radiotelephone operator's license. He has been in the electronics industry for more than 35 years.

MODERN
DICTIONARY
of

ELECTRONICS

Rudolf F. Graf

SIXTH EDITION

BLAINVIEW-OLD BETHPAGE PUBLIC LIBRARY
999 OLD COUNTRY ROAD
BLAINVIEW, N. Y. 11803

Howard W. Sams & Co., Inc.

MODERN
DICTIONARY
of
ELECTRONICS

Rudolf F. Graf

Copyright © 1962, 1963, 1968, 1972, 1977, and 1984
by Rudolf F. Graf

SIXTH EDITION

SIXTH EDITION
FIRST PRINTING—1984

All rights reserved. No part of this book shall be reproduced, stored in a retrieval system, or transmitted by any means, electronic, mechanical, photocopying, recording, or otherwise, without written permission from the publisher. No patent liability is assumed with respect to the use of the information contained herein. While every precaution has been taken in the preparation of this book, the publisher assumes no responsibility for errors or omissions. Neither is any liability assumed for damages resulting from the use of the information contained herein.

International Standard Book Number: 0-672-22041-5

Library of Congress Catalog Card Number: 83-51223

Edited by: *Charlie Buffington and Jack Davis*

Illustrated by: *T.R. Emrick*

Printed in the United States of America.

shielding device designed to reduce the effect of stray light on an optical system.

baffle plate—A metal plate inserted into a waveguide to reduce the cross-sectional area for wave-conversion purposes.

bail—A loop of wire used to prevent permanent separation of two or more parts assembled together—e.g., the bail holding dust-caps on round connectors.

Bakelite—A trademark of the Bakelite Corp. for its line of plastic and resins. Formerly, the term applied only to its phenolic compound used as an insulating material in the construction of radio parts.

bake-out—Subjecting an unsealed (hybrid) circuit package to an elevated temperature to bake out moisture and unwanted gases prior to final sealing.

balance—1. The effect of blending the volume of various sounds coming over different microphones in order to present them in correct proportion. 2. The maintenance of equal average volume from both speaker systems of a stereo installation. 3. Relative volume, as between different voices or instruments bass and treble, or left and right stereo channels. 4. Either a condition of symmetry in an electrical circuit, such as a Wheatstone bridge, or the condition of zero output from a device when properly energized. In the latter sense, depending upon the nature of the excitation, two general categories of balance may be encountered: for dc excitation, resistive balance; for ac excitation, resistive and/or reactive balance.

balance control—1. On a stereo amplifier, a differential gain control used to vary the volume of one speaker system relative to the other without affecting the overall volume level. As the volume of one speaker increases and the other decreases, the sound appears to shift from left to center to right, or vice versa. 2. A variable

resistor used to compensate for any slight loss of signal in the right or left channel of a stereo amplifier. To some extent, this control can compensate for unbalanced speakers and be used for adjustment when the listener is not in an equidistant position between the two loudspeakers. 3. A variable component, such as a potentiometer or variable capacitor, used to balance bridges, null circuits, or phase speakers.

balanced—1. Electrically alike and symmetrical with respect to ground. 2. Arranged to provide balance between certain sets of terminals.

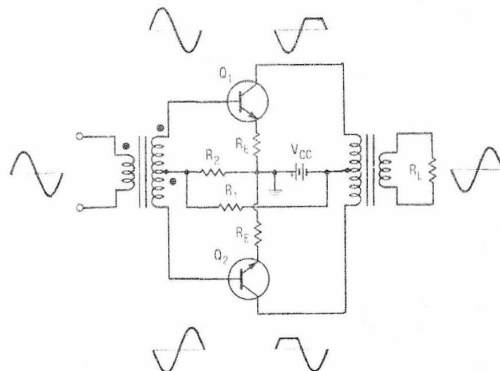
balanced amplifier—An amplifier circuit with two identical signal branches, connected to operate in phase opposition and with their input and output connections each balanced to ground; for example, a push-pull amplifier (see below).

balanced armature—An armature which is approximately in equilibrium with respect to both static and dynamic forces.

balanced-armature unit—The driving unit used in magnetic speakers, consisting of an iron armature pivoted between the poles of a permanent magnet and surrounded by coils carrying the audio-frequency current. Variations in the audio-frequency current cause corresponding changes in the armature magnetism and corresponding movements of the armature with respect to the poles of the permanent magnet.

balanced bridge—A bridge circuit with its components adjusted so that it has an output voltage of zero.

balanced circuit—1. A circuit with two sides electrically alike and symmetrical to a common reference point, usually ground. 2. A circuit terminated by a network that has infinite impedance losses. 3. A circuit terminated by a network



Balanced push-pull amplifier.

whose impedance balances that of the line, resulting in negligible return losses.

4. A circuit whose electrical midpoint is grounded, as opposed to the single-ended circuit, which has one side grounded. 5. A null bridge circuit. 6. Telephone circuit in which the two conductors are electrically balanced to each other and to ground.

balanced converter—See Balun.

balanced currents—Also called push-pull currents. In the two conductors of a balanced line, currents which are equal in value and opposite in direction at every point along the line.

balanced detector—A demodulator for frequency-modulation systems. In one form, the output consists of the rectified difference of the two voltages produced across two resonant circuits, one circuit being tuned slightly above the carrier frequency and the other slightly below.

balanced line—A line or circuit utilizing two identical conductors. Each conductor is operated so that the voltages on them at any transverse plane are equal in magnitude and opposite in polarity with respect to ground. Thus, the currents on the line are equal in magnitude and opposite in direction. A balanced line is preferred where minimum noise and crosstalk are desired.

balanced-line system—A system consisting of a generator, balanced line, and load adjusted so that the voltages of the two conductors at all transverse planes are equal in magnitude and opposite in polarity with respect to ground.

balanced low-pass filter—A low-pass filter designed to be used with a balanced line.

balanced magnetic switch—A magnetic switch that is operated by a balanced magnetic field in such a manner as to resist defeat with an external magnet. It signals an alarm when it detects either an increase or decrease in magnetic field strength.

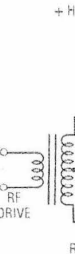
balanced method—A method of measurement in which the reading is taken at zero. It may be a visual or audible reading, and in the latter case the null is the no-sound setting.

balanced modulator—An amplitude modulator in which the control grids of two tubes are connected for parallel operation, and the screen grids and plates for push-pull operation. After modulation, the output contains the two sidebands without the carrier.

balanced network—1. A hybrid network in which the impedances of the opposite branches are equal. 2. A network in which the corresponding series impedance elements are identical and symmetrical with respect to ground.

balanced oscillator—Any oscillator in

which
tank ci
(2) the
the cer
opposit
balance
(as from
nal vol
third n
rangem
picked
necting
balance
push-p
center-
output
ter tap
balance
electro
which
a single
balance
line w
ground
from e
equal t
balance
networ
load pr
ground
balance
mission
sistance
ances f
other e
balance
pull vo
balance
ground
and op
along t
balance
two sid
cal to
Comm
sides of



Explore Litigation Insights

Docket Alarm provides insights to develop a more informed litigation strategy and the peace of mind of knowing you're on top of things.

Real-Time Litigation Alerts



Keep your litigation team up-to-date with **real-time alerts** and advanced team management tools built for the enterprise, all while greatly reducing PACER spend.

Our comprehensive service means we can handle Federal, State, and Administrative courts across the country.

Advanced Docket Research



With over 230 million records, Docket Alarm's cloud-native docket research platform finds what other services can't. Coverage includes Federal, State, plus PTAB, TTAB, ITC and NLRB decisions, all in one place.

Identify arguments that have been successful in the past with full text, pinpoint searching. Link to case law cited within any court document via Fastcase.

Analytics At Your Fingertips



Learn what happened the last time a particular judge, opposing counsel or company faced cases similar to yours.

Advanced out-of-the-box PTAB and TTAB analytics are always at your fingertips.

API

Docket Alarm offers a powerful API (application programming interface) to developers that want to integrate case filings into their apps.

LAW FIRMS

Build custom dashboards for your attorneys and clients with live data direct from the court.

Automate many repetitive legal tasks like conflict checks, document management, and marketing.

FINANCIAL INSTITUTIONS

Litigation and bankruptcy checks for companies and debtors.

E-DISCOVERY AND LEGAL VENDORS

Sync your system to PACER to automate legal marketing.