

[54] **COMPUTER SYSTEM WITH AUTOMATIC INITIALIZATION OF PLUGGABLE OPTION CARDS**

3508648 9/1986 Fed. Rep. of Germany
 50-120935 9/1976 Japan

(List continued on next page.)

[75] **Inventors:** Chester A. Heath; John K. Langgood, both of Boca Raton, Fla.; Ronald E. Valli, Pittsburgh, Pa.

OTHER PUBLICATIONS

IBM TDB vol. 20, No. 7, Dec. 1977, Input/Output Device Address Recognition Mechanism.

(List continued on next page.)

[73] **Assignee:** International Business Machines Corp., Armonk, N.Y.

[21] **Appl. No.:** 296,387

[22] **Filed:** Jan. 6, 1989

Related U.S. Application Data

[63] Continuation of Ser. No. 21,391, Mar. 13, 1987, abandoned.

[51] **Int. Cl.³** G06F 13/00; G06F 7/04

[52] **U.S. Cl.** 364/900; 364/948.5; 364/944.61; 364/975.2; 364/976.4; 364/945; 364/929.5; 364/929.2; 371/11.1

[58] **Field of Search** ... 364/200 MS File, 900 MS File; 340/825.07, 825.06, 825.52, 825.06; 371/11.1, 11.2, 11.3, 66, 7

[56] **References Cited**

U.S. PATENT DOCUMENTS

| | | | |
|-----------|---------|------------|-----------|
| 3,480,914 | 11/1969 | Schlaeppli | 364/200 |
| 3,510,843 | 5/1970 | Bennett | 364/200 |
| 3,573,741 | 4/1971 | Gavril | 364/200 |
| 3,818,447 | 6/1974 | Craft | 340/172.5 |
| 4,003,033 | 1/1977 | O'Keefe | 364/200 |
| 4,015,244 | 3/1977 | Simpson | 364/200 |

(List continued on next page.)

FOREIGN PATENT DOCUMENTS

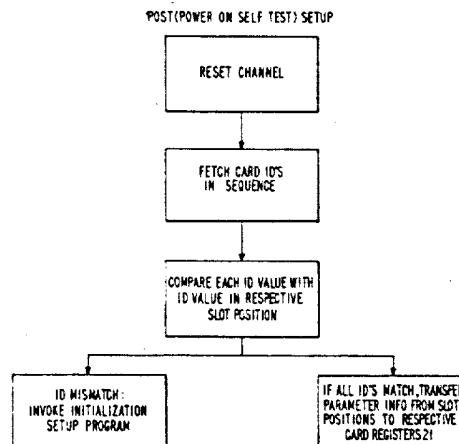
| | | |
|---------|---------|--------------------|
| 0041406 | 9/1981 | European Pat. Off. |
| 0087368 | 8/1983 | European Pat. Off. |
| 0121331 | 3/1984 | European Pat. Off. |
| 0121381 | 10/1984 | European Pat. Off. |
| 0136178 | 4/1985 | European Pat. Off. |
| 0179981 | 6/1985 | European Pat. Off. |
| 0171073 | 2/1986 | European Pat. Off. |
| 0182044 | 5/1986 | European Pat. Off. |
| 0200198 | 11/1986 | European Pat. Off. |

Primary Examiner—Gareth D. Shaw
Assistant Examiner—Paul Kulik
Attorney, Agent, or Firm—Winfield J. Brown, Jr.; Robert Lieber

[57] **ABSTRACT**

A data processing system includes a planar board having a central processing unit (CPU), a main memory unit, and input/output (I/O) sockets or slots, each adapted to receive a selected one of a plurality of different and/or similar option cards. Each card contains (or is connected to) and controls a respective peripheral device; and each card is pre-wired with an ID value corresponding to its card type. Software programmable option registers on each card store parameters such as designated default (or alternate) address information, priority levels, and other system resource parameters. A setup routine, during initial power-on, retrieves and stores the appropriate parameters in the I/O cards and also in slot positions in main memory, one position being assigned to each slot on the board. Each slot position is adapted to hold the parameters associated with the card inserted in its respective slot and the card ID value. That portion of main memory containing the slot positions is adapted to maintain the parameter and ID information by means of battery power when system power fails or is disconnected, i.e., a nonvolatile memory portion. Subsequent power-on routines are simplified by merely transferring parameters from the table to the card option registers if the status of all the slots has not changed since the last power-down, system reset, or channel reset.

18 Claims, 7 Drawing Sheets



U.S. PATENT DOCUMENTS

| | | | |
|-----------|---------|-----------------|-----------|
| 4,025,903 | 5/1977 | Kaufman | 364/200 |
| 4,027,108 | 5/1977 | Moorehead | |
| 4,070,704 | 1/1978 | Calle et al. | 364/200 |
| 4,075,693 | 2/1978 | Fox | 364/200 |
| 4,155,117 | 5/1979 | Mitchell, Jr. | 364/200 |
| 4,177,511 | 12/1979 | Taddei | 364/200 |
| 4,191,996 | 3/1980 | Chesley | 364/200 |
| 4,236,207 | 11/1980 | Rado | 364/200 |
| 4,253,087 | 2/1981 | Saal | 340/147 R |
| 4,253,144 | 2/1981 | Bellamy | 364/200 |
| 4,254,463 | 3/1981 | Busby | 364/200 |
| 4,268,901 | 5/1981 | Subrizi | 364/200 |
| 4,293,924 | 10/1981 | Struger | 364/900 |
| 4,303,993 | 12/1981 | Panepinto | 365/230 |
| 4,314,354 | 2/1982 | Felder | 364/900 |
| 4,335,426 | 6/1982 | Maxwell | 364/200 |
| 4,356,475 | 10/1982 | Neumann | 340/521 |
| 4,360,870 | 11/1982 | McVey | 364/200 |
| 4,363,094 | 12/1982 | Kaul | 364/200 |
| 4,373,181 | 2/1983 | Chisholm et al. | 364/200 |
| 4,400,775 | 8/1983 | Nozaki | 364/200 |
| 4,432,049 | 2/1984 | Shaw et al. | 364/200 |
| 4,437,157 | 3/1984 | Witalka | 364/200 |
| 4,442,504 | 4/1984 | Dummermuth | 364/900 |
| 4,454,596 | 6/1984 | Wunsch | 364/900 |
| 4,458,357 | 7/1984 | Weymouth | 377/2 |
| 4,491,913 | 1/1985 | Calvignac | 364/200 |
| 4,514,728 | 4/1985 | Ahuja | 340/825.5 |
| 4,521,847 | 6/1985 | Ziehm et al. | 371/7 X |
| 4,556,953 | 12/1985 | Caprio et al. | 364/900 |
| 4,562,535 | 12/1985 | Vincent et al. | 364/200 |
| 4,563,736 | 1/1986 | Boudreau | 364/200 |
| 4,571,676 | 2/1986 | Mantellina | 364/200 |
| 4,578,773 | 3/1986 | Desai | 364/900 |
| 4,589,063 | 5/1986 | Shah et al. | 364/200 |
| 4,604,690 | 8/1986 | Crabtree et al. | 364/200 |
| 4,622,633 | 11/1986 | Ceccon et al. | 364/200 |
| 4,626,634 | 12/1986 | Brahm | 379/28 |
| 4,633,392 | 12/1986 | Vincent | 364/200 |
| 4,654,857 | 3/1987 | Samson | 371/68 |
| 4,660,141 | 4/1987 | Ceccon | 364/200 |
| 4,670,855 | 6/1987 | Caprio | 364/900 |
| 4,701,878 | 10/1987 | Günkel et al. | 364/900 |
| 4,713,834 | 12/1987 | Brahm | 379/28 |
| 4,718,038 | 1/1988 | Yoshida | 364/900 |
| 4,750,136 | 6/1988 | Arpin et al. | 364/200 X |
| 4,760,553 | 7/1988 | Buckley et al. | 364/900 |
| 4,787,025 | 11/1988 | Cheselka | 364/200 |
| 4,787,028 | 11/1988 | Finfrock et al. | 364/900 X |
| 4,787,030 | 11/1988 | Harter | 364/200 |
| 4,870,704 | 9/1989 | Matelan | 364/200 |

FOREIGN PATENT DOCUMENTS

| | | |
|----------|--------|-------|
| 54-24314 | 3/1979 | Japan |
| 54-73531 | 6/1979 | Japan |

| | | |
|----------|---------|----------------|
| 55-56235 | 4/1980 | Japan |
| 56-46384 | 10/1982 | Japan |
| 2101370 | 1/1983 | United Kingdom |
| 2137382 | 10/1984 | United Kingdom |
| 2166893 | 5/1986 | United Kingdom |
| 2175716 | 12/1986 | United Kingdom |

OTHER PUBLICATIONS

- IBM TDB vol. 20, No. 8, Jan. 1978, Initial Microprogram Load by Blocks Via Cycle Steal.
- IBM TDB vol. 22, No. 2, Jul., 1979, Even/Odd Addresses to Allow Device Adapter Sharing by More Than One Processor.
- IBM TDB vol. 22, No. 5, Oct. 1979, Satellite Station Address Assignment Method.
- IBM TDB vol. 22, No. 10, Mar., 1980, Automatic Module Detection.
- IBM TDB vol. 23, No. 8, Jan., 1981, Dynamic Device Address Assignment Mechanism.
- Electronic Design, Sep. 3, 1981, pp. 141-156, Several Articles, "Functional Architecture Threatens Central CPUs", etc.
- Paper in Euromicro, Input/Output Control of IBM System/370 Model 125 through Dedicated Input/Output Processors, by Assmuth et al., pp. 24-40.
- Technical Disclosure Bulletin (IBM) vol. 27, No. 1E "Automatic Domain Configuration Mechanism for a Multi-Device I/O Controller".
- Wescon Technical Paper Oct. 30-Nov. 2, 1984, "A Standard Protocol for Host Computer-Peripheral Interface Allows Upgrading to the Latest Mass Storage Devices".
- Technical Disclosure Bulletin (IBM) vol. 27, No. 2, Jul 1984 "Input/Output Channel Address Assignment Mechanism".
- JP Abstract vol. 10, No. 256 (P-493) (23312) Sep. 2 1986.
- JP Abstract vol. 9, No. 239 (P-391) (1962) Sep. 25 1985.
- JP Abstract vol. 9, vol. 9, No. 190 (P-378) (1913) Aug 7, 1985.
- EDN Magazine vol. 26 (1981) Feb., No. 3, Boston, MA
- New Electronics 19(1986) Jul., No. 14, London, Great Britain.
- vol. 22, No. 3, Aug. 1979, IBM Technical Disclosure Bulletin, Programmable Identification for I/O Device J. M. McVey.
- vol. 16, No. 1 Jun. 1973, IBM Technical Disclosure Bulletin, Program Controlled I/O Address Assignment L. J. Rosenberg.

FIG. 1

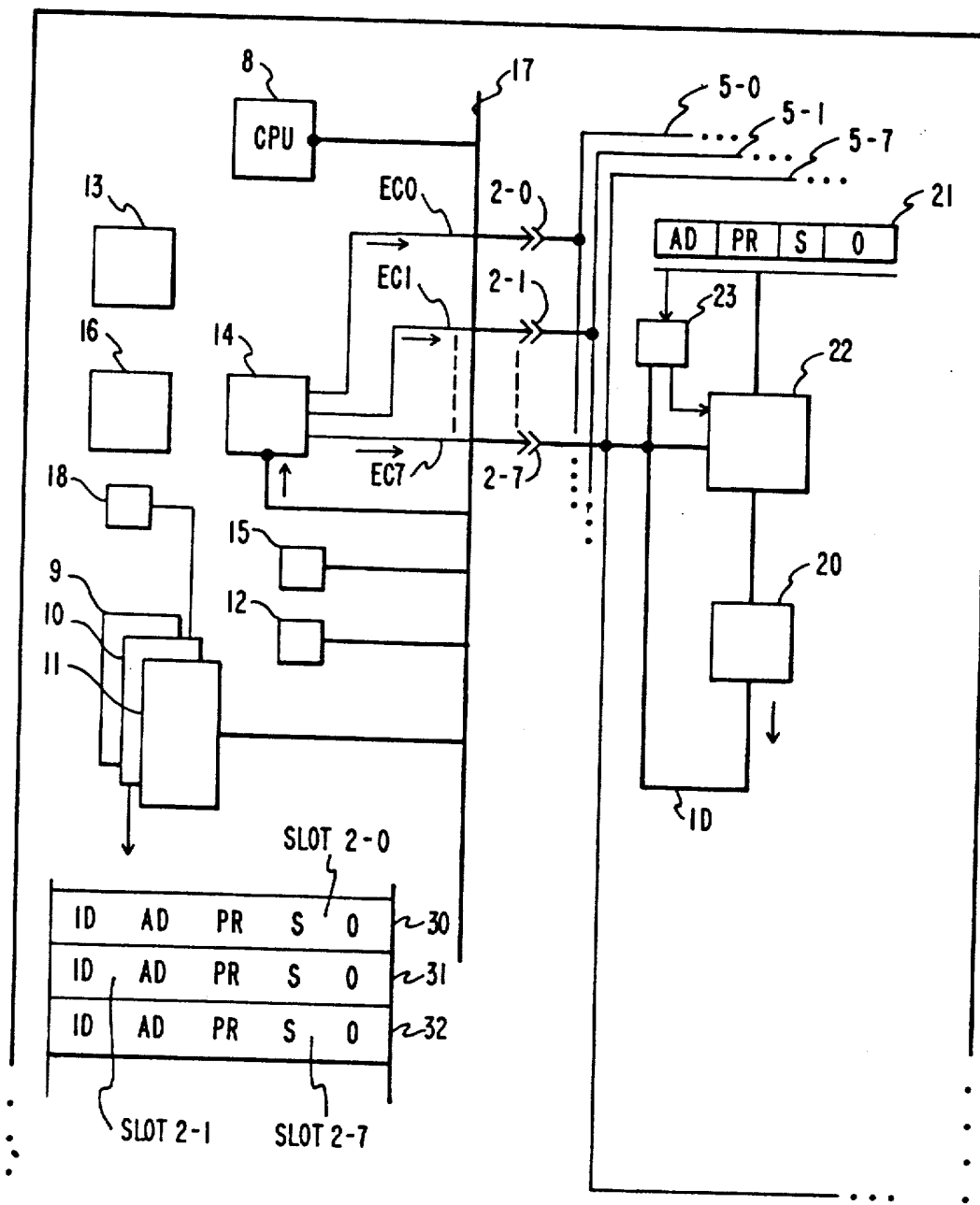
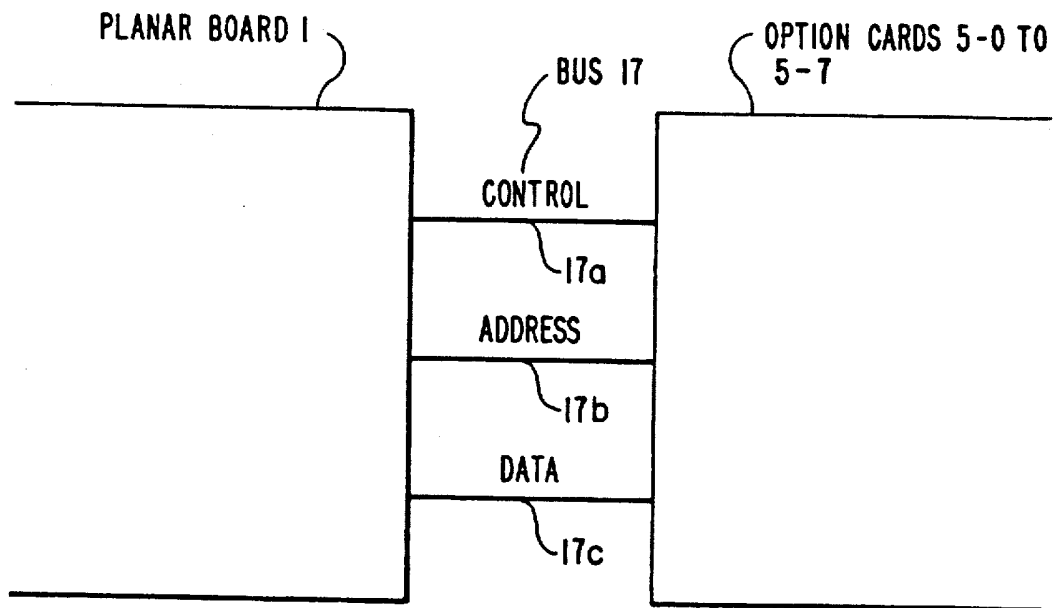


FIG. 2



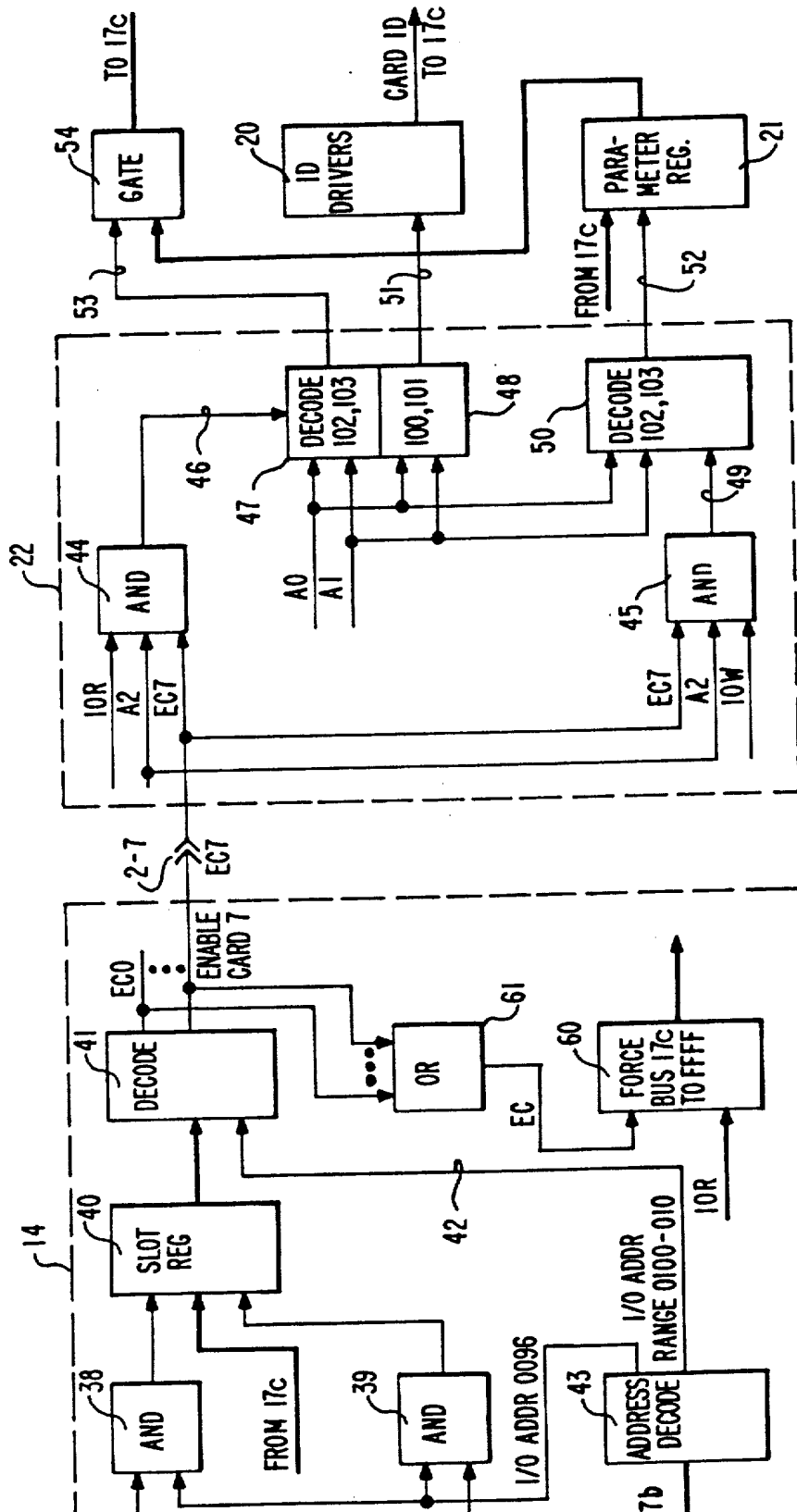


FIG. 3

Explore Litigation Insights

Docket Alarm provides insights to develop a more informed litigation strategy and the peace of mind of knowing you're on top of things.

Real-Time Litigation Alerts



Keep your litigation team up-to-date with **real-time alerts** and advanced team management tools built for the enterprise, all while greatly reducing PACER spend.

Our comprehensive service means we can handle Federal, State, and Administrative courts across the country.

Advanced Docket Research



With over 230 million records, Docket Alarm's cloud-native docket research platform finds what other services can't. Coverage includes Federal, State, plus PTAB, TTAB, ITC and NLRB decisions, all in one place.

Identify arguments that have been successful in the past with full text, pinpoint searching. Link to case law cited within any court document via Fastcase.

Analytics At Your Fingertips



Learn what happened the last time a particular judge, opposing counsel or company faced cases similar to yours.

Advanced out-of-the-box PTAB and TTAB analytics are always at your fingertips.

API

Docket Alarm offers a powerful API (application programming interface) to developers that want to integrate case filings into their apps.

LAW FIRMS

Build custom dashboards for your attorneys and clients with live data direct from the court.

Automate many repetitive legal tasks like conflict checks, document management, and marketing.

FINANCIAL INSTITUTIONS

Litigation and bankruptcy checks for companies and debtors.

E-DISCOVERY AND LEGAL VENDORS

Sync your system to PACER to automate legal marketing.